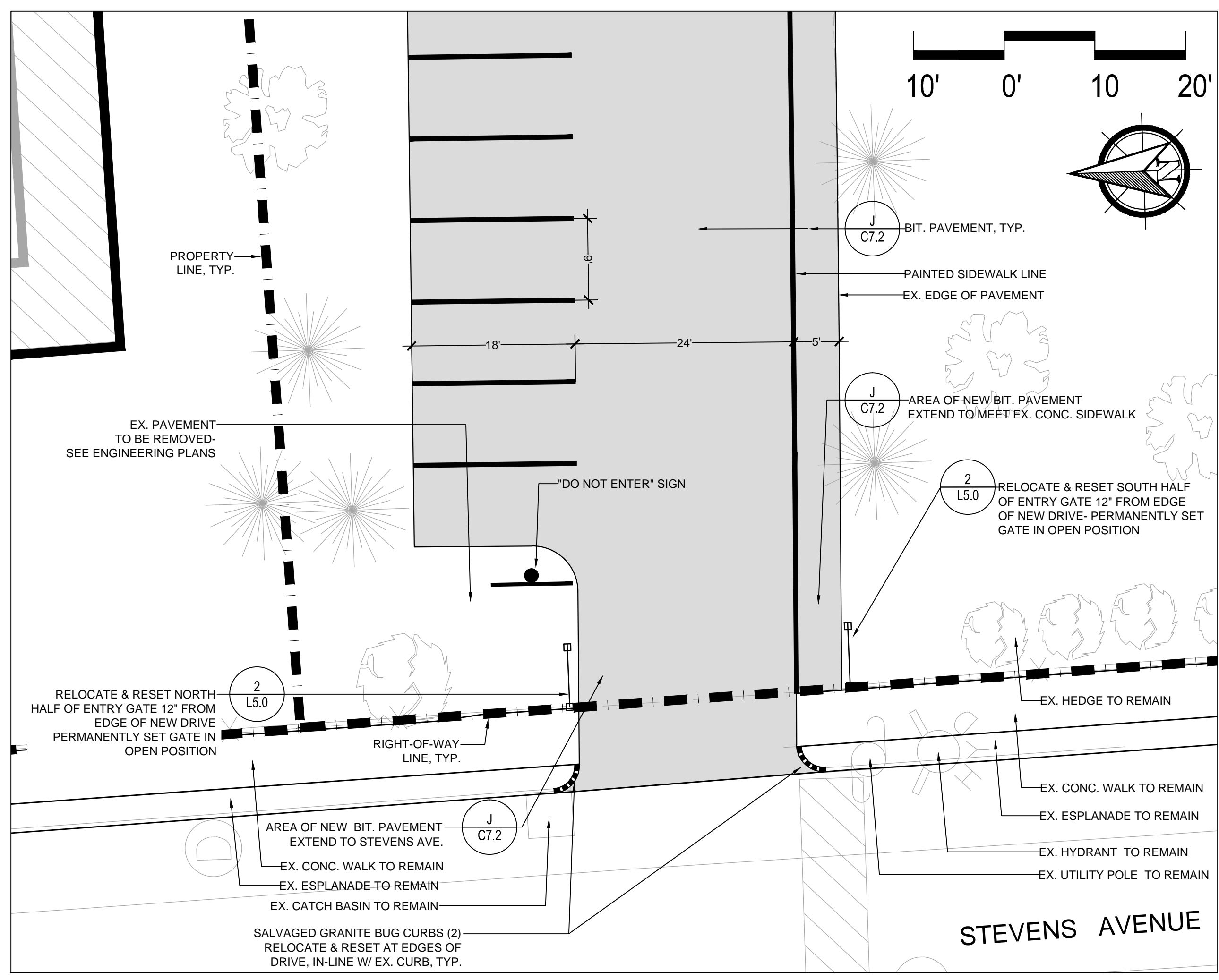
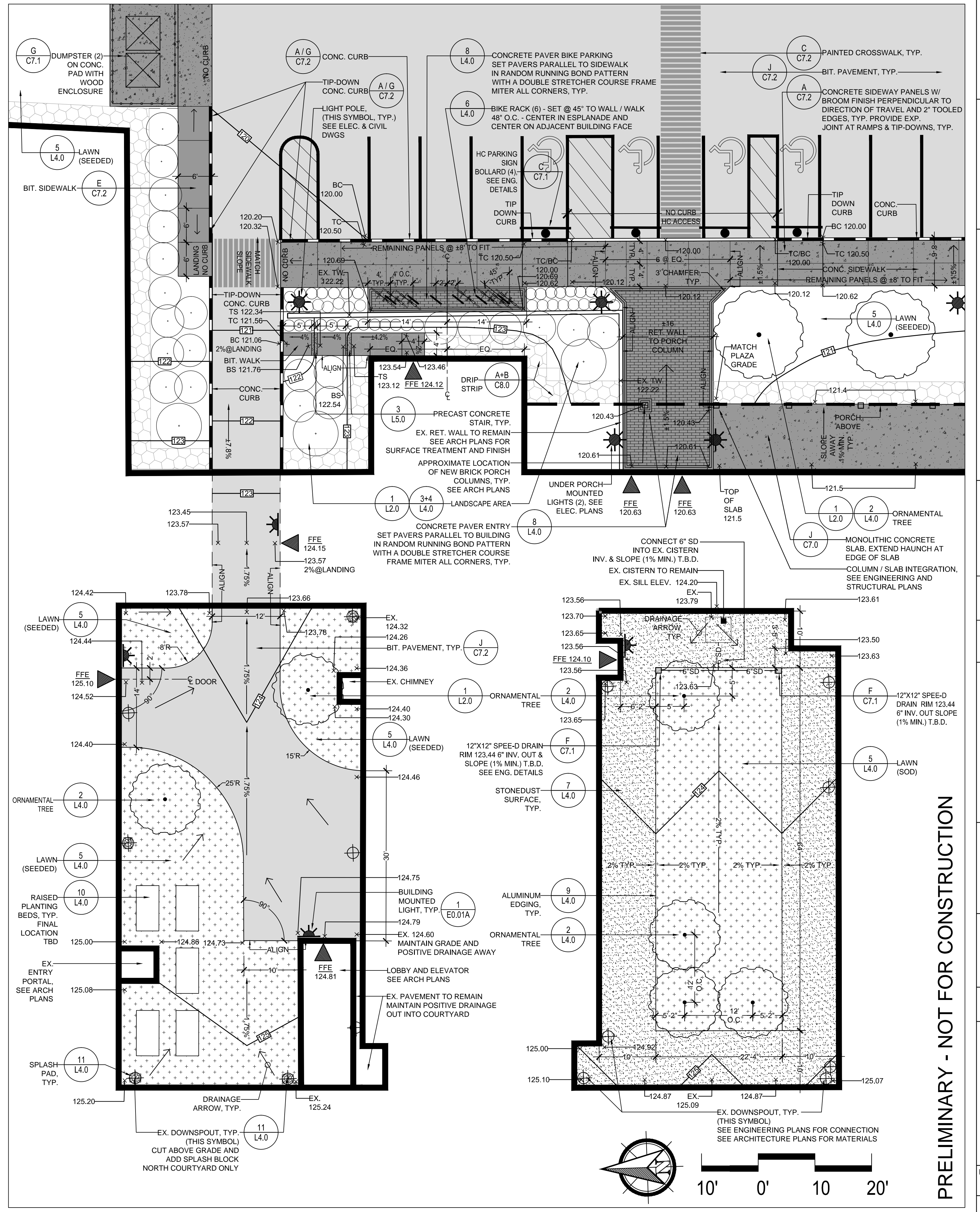


**1 ENTRY DRIVE AT WALTON STREET**  
SCALE: 1"=10'-0"



**2 EXIT / PARKING AT STEVENS AVENUE**  
SCALE: 1"=10'-0"



**3 ENTRY AND COURTYARD ENLARGEMENT PLAN**  
SCALE: 1"=10'-0"



APPLICANT:  
**MOTHERHOUSE ASSOCIATES LP**  
100 COMMERCIAL STREET  
SUITE 414  
PORTLAND, ME 04101  
207.772.7673

**MOTHERHOUSE SENIOR HOUSING**

Revisions	Date	Description
1	07/28/2015	SUBMISSION TO CITY
2	11/20/2015	50% SUBMISSION
3	02/15/2016	90% MSHA SUBMISSION

**ENLARGEMENT PLAN**

Phase:  
**CONSTRUCTION**

**CARROLL ASSOCIATES LANDSCAPE ARCHITECTS**  
217 COMMERCIAL STREET, STE 200  
PORTLAND, MAINE 04101  
207.772.1552 V. F. 207.772.0172

Date:  
**JUNE 24, 2015**

Sheet No:

**L3.0**

PRELIMINARY - NOT FOR CONSTRUCTION