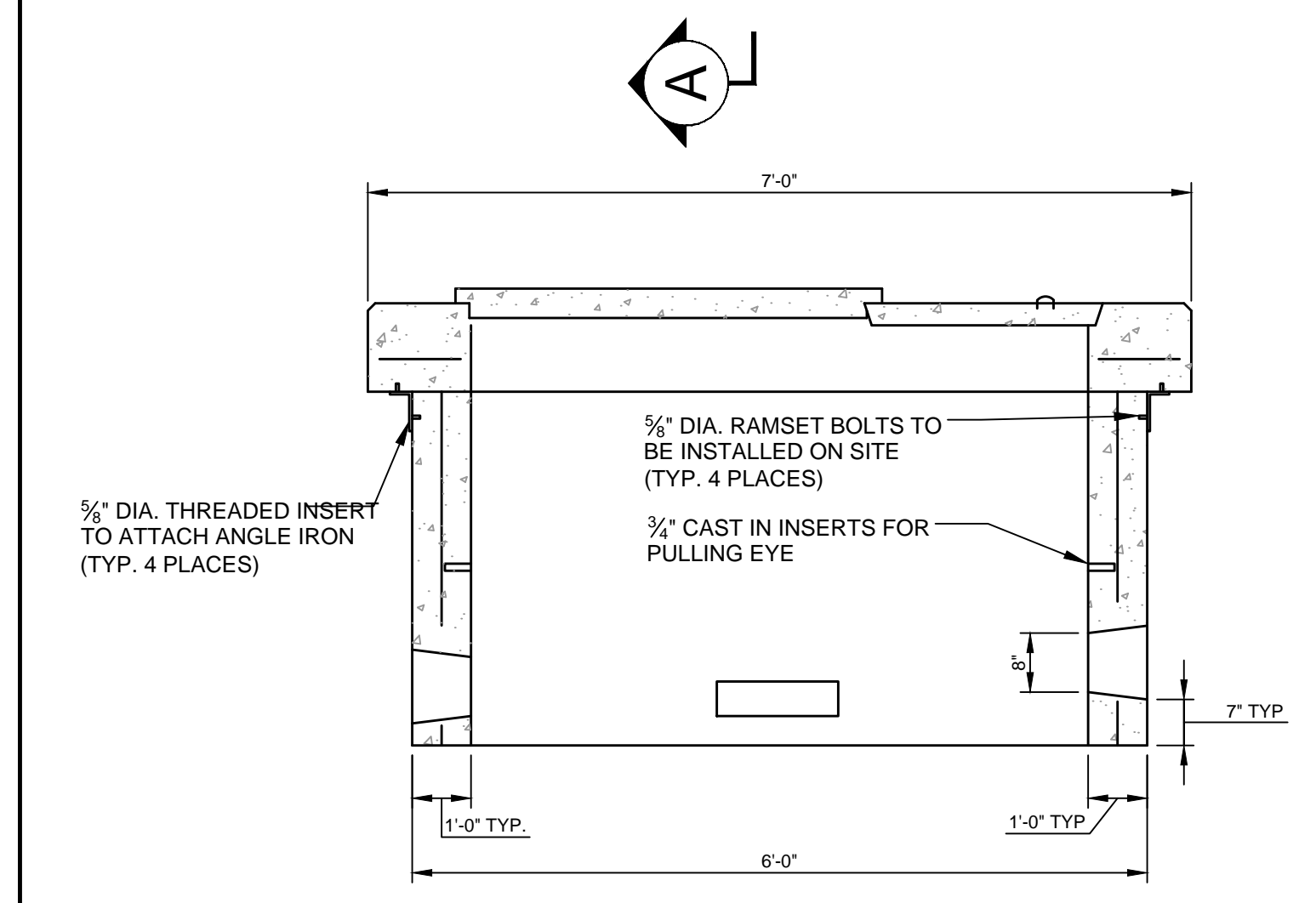
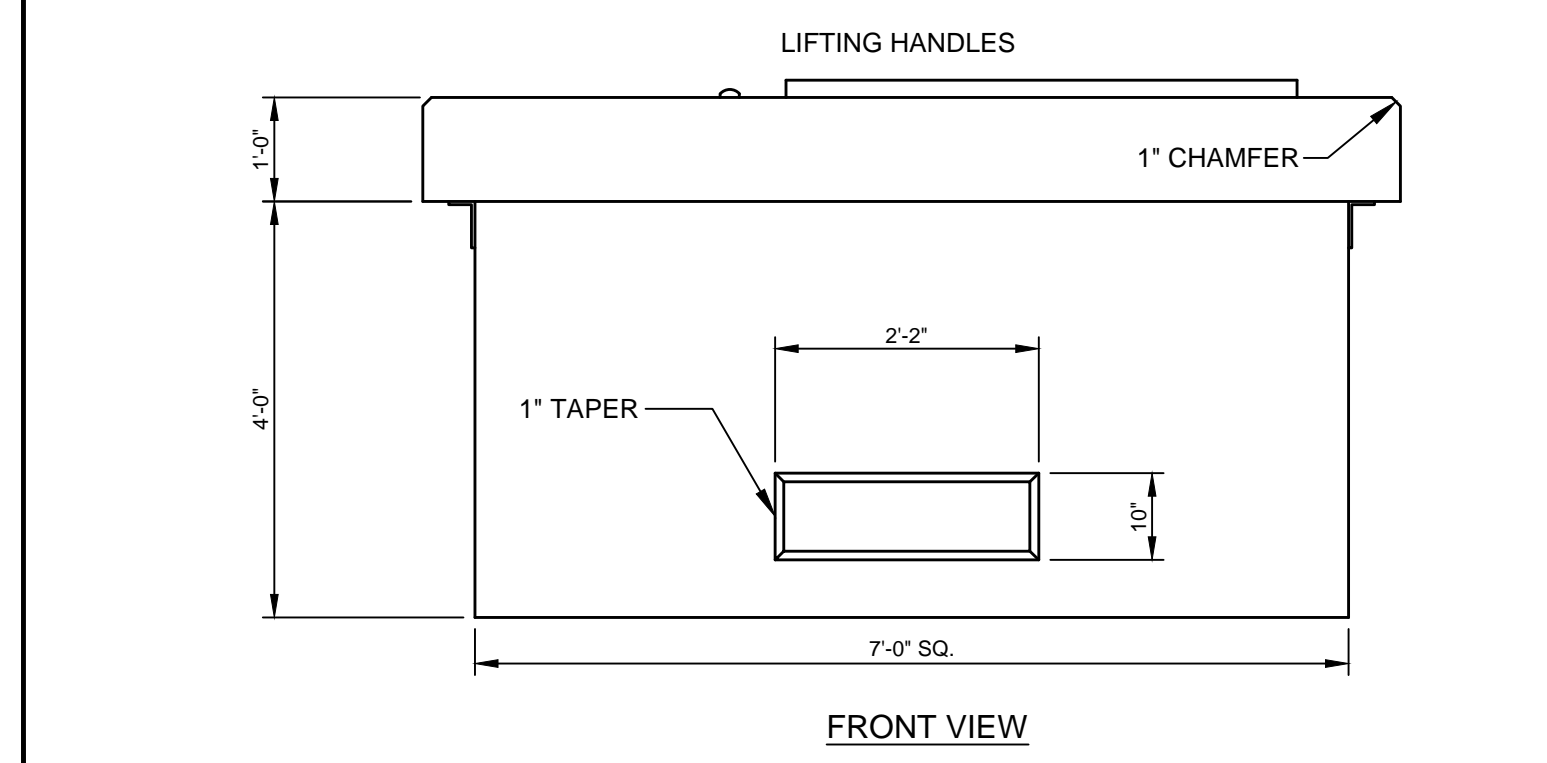


TOP VIEW



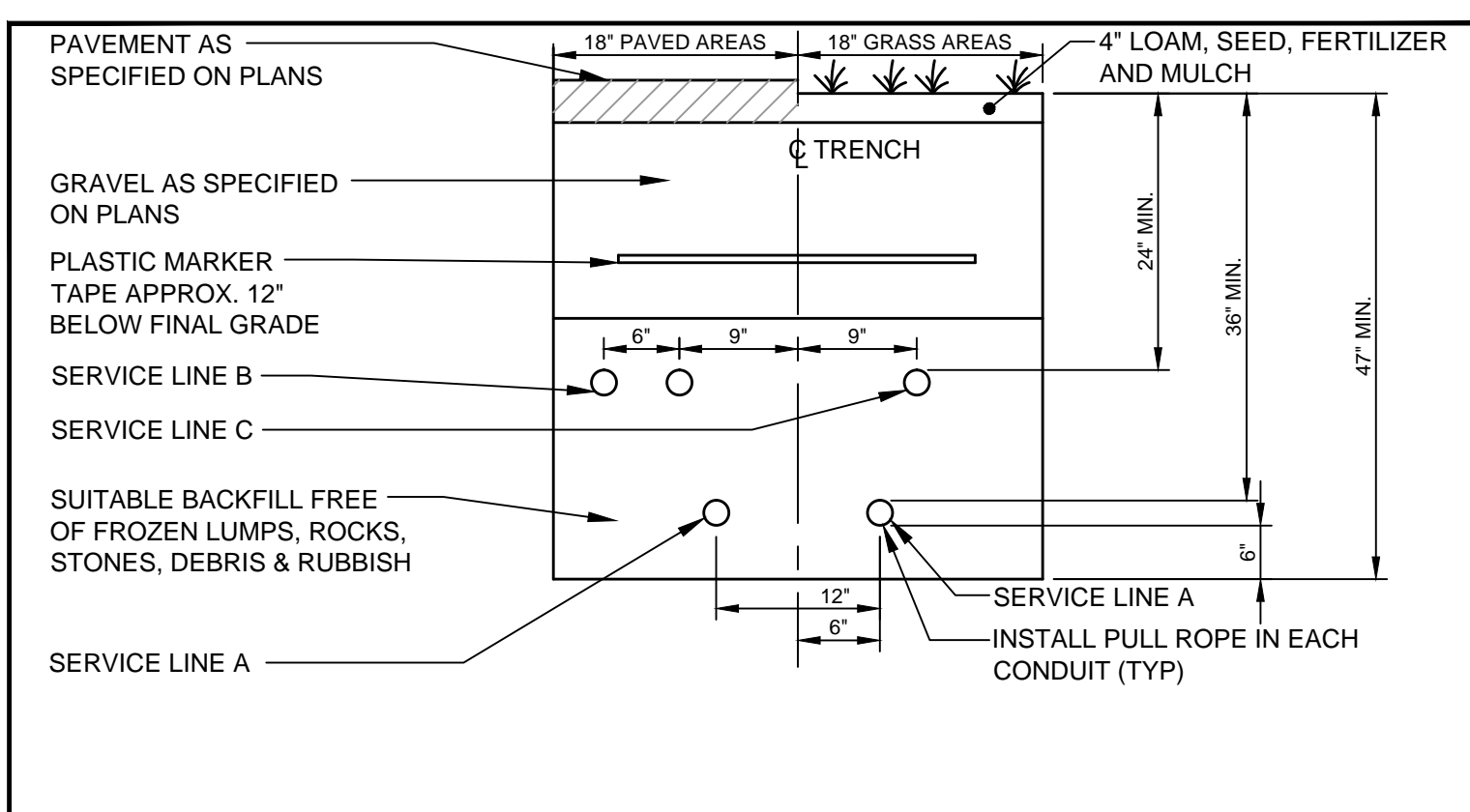
SECTION A-A



FRONT VIEW

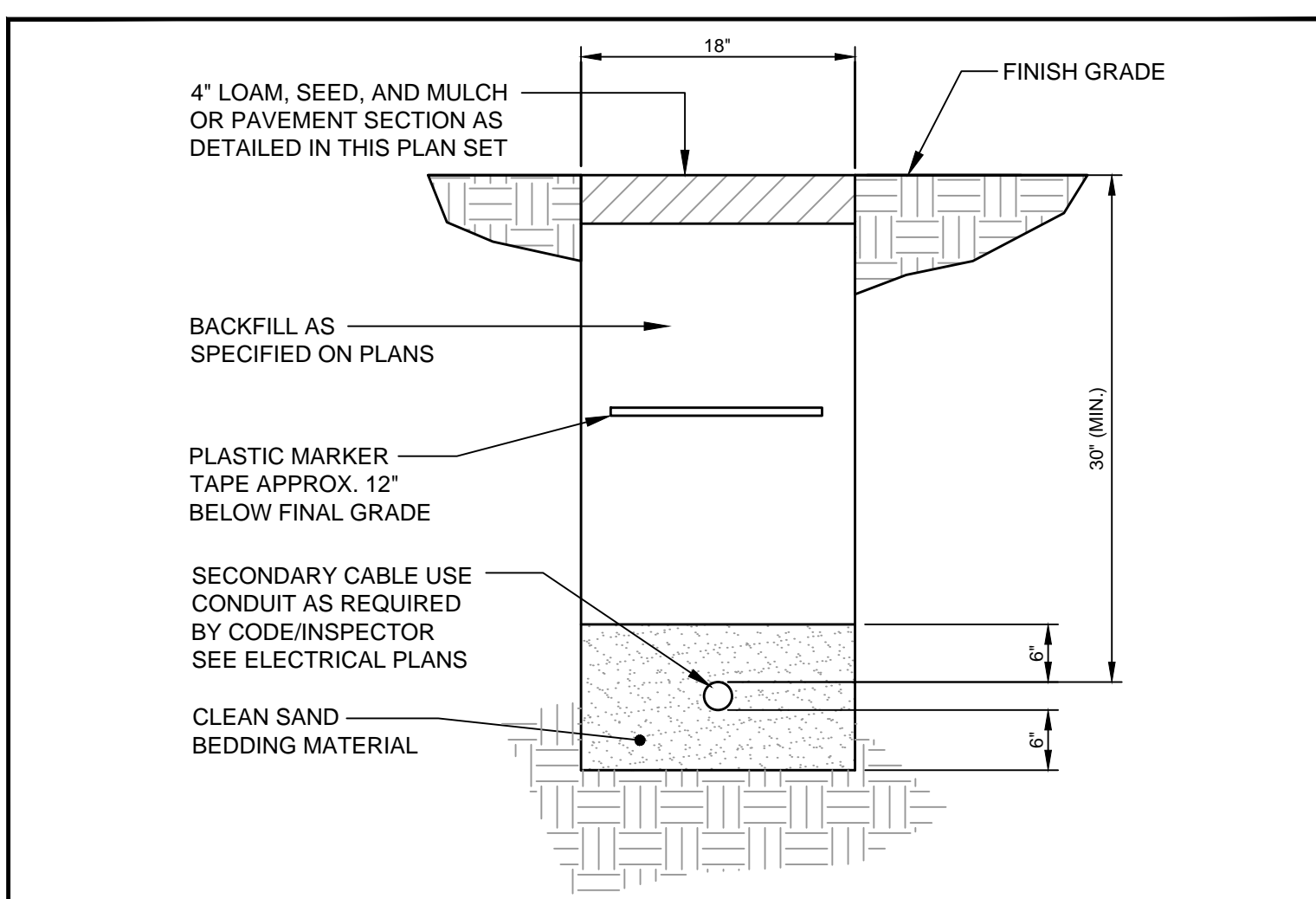
- DESIGN NOTES:
1. CONCRETE 4,000 PSI AT 28 DAYS.
  2. REINFORCING #4 BARS AT 6" O.C. EACH WAY.
  3. DUCT OPENINGS SHOWN ARE TYPICAL AND CAN BE MODIFIED PER REQUEST.
  4. CENTRAL MAINE POWER COMPANY SPECIFICATION.
  5. TEMPORARY COVER HAS (2) 3/8" THREADED LIFTING INSERTS CAST IN.
- NOTE:  
CONFIRM TRANSFORMER PAD SIZES WITH OWNER. DIVISION 2 CONTRACTOR IS RESPONSIBLE FOR FURNISHING AND INSTALLING THE TRANSFORMER PAD.

**(A)** 7'-0" TRANSFORMER PAD  
N.T.S.

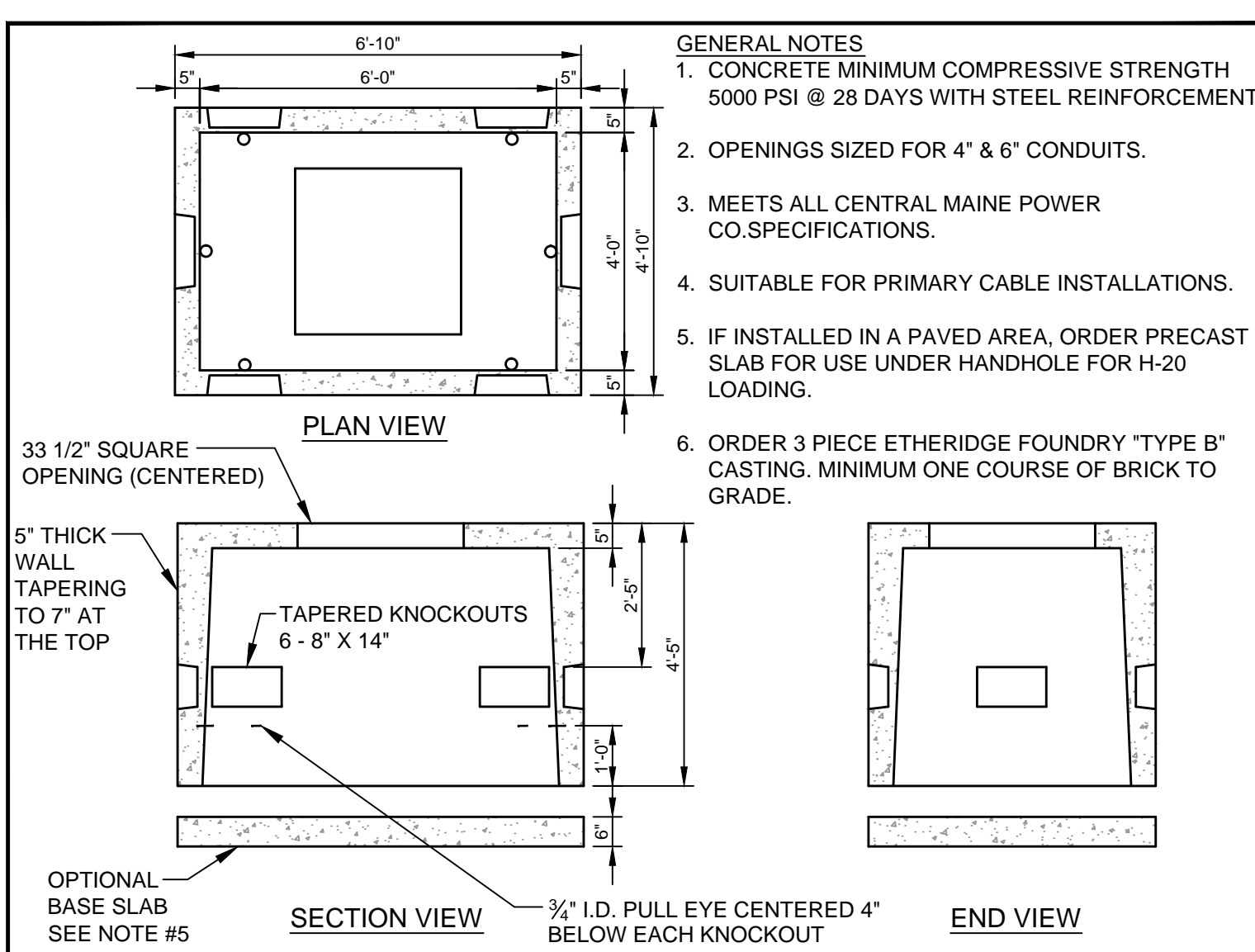


- NOTES:
1. ONE CONDUIT CAPPED FOR SPARE. PROVIDE GALVANIZED STEEL LONG SWEEP AT RISER POLE AND EXTEND GALVANIZED CONDUIT TO 10' ABOVE GRADE AT POLE WITH STAND-OFF BRACKETS.
  2. FOR CONDUIT TYPES AND SIZES SEE ELECTRICAL PLAN

**(B)** UTILITY TRENCH - PRIMARY ELECTRIC, TELEPHONE & COMMUNICATIONS  
N.T.S.

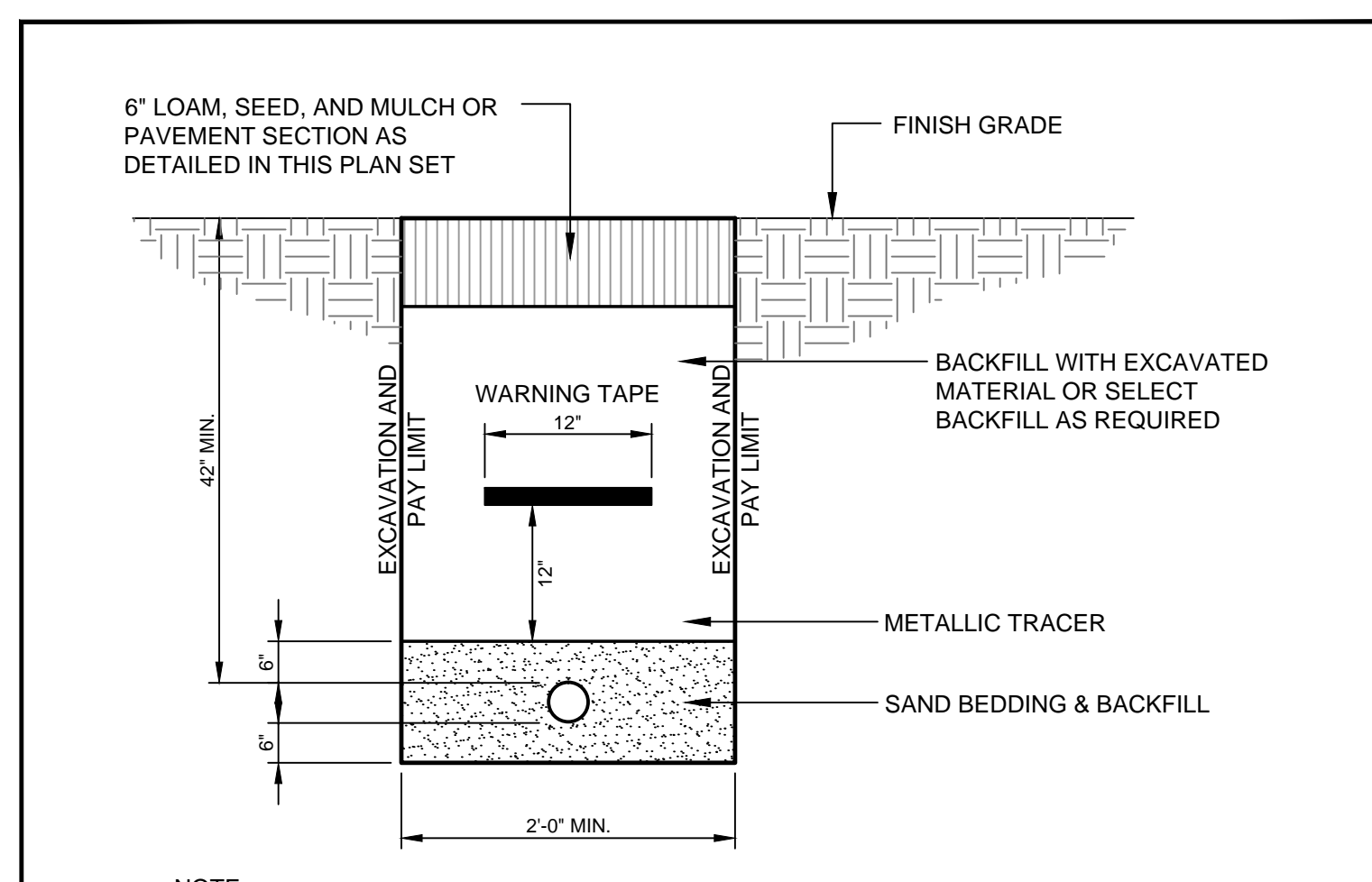


**(C)** SECONDARY ELECTRICAL TRENCH DETAIL  
N.T.S.



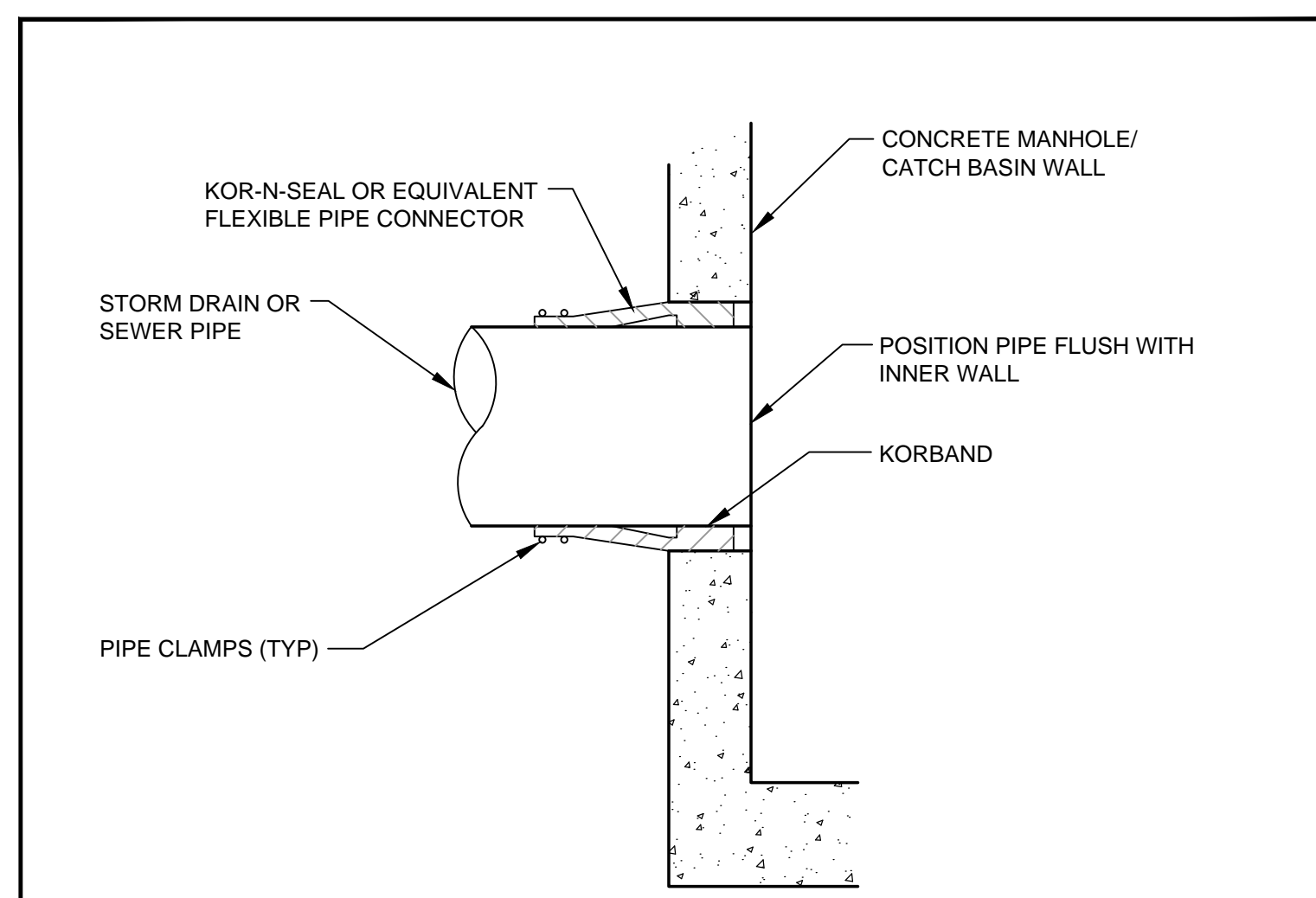
**(D)** SPLICE BOX DETAIL  
N.T.S.

- GENERAL NOTES:
1. CONCRETE MINIMUM COMPRESSIVE STRENGTH 5000 PSI @ 28 DAYS WITH STEEL REINFORCEMENT
  2. OPENINGS SIZED FOR 4" & 6" CONDUITS.
  3. MEETS ALL CENTRAL MAINE POWER CO. SPECIFICATIONS.
  4. SUITABLE FOR PRIMARY CABLE INSTALLATIONS.
  5. IF INSTALLED IN A PAVED AREA, ORDER PRECAST SLAB FOR USE UNDER HANDHOLE FOR H-20 LOADING.
  6. ORDER 3 PIECE ETHERIDGE FOUNDRY 'TYPE B' CASTING. MINIMUM ONE COURSE OF BRICK TO GRADE.

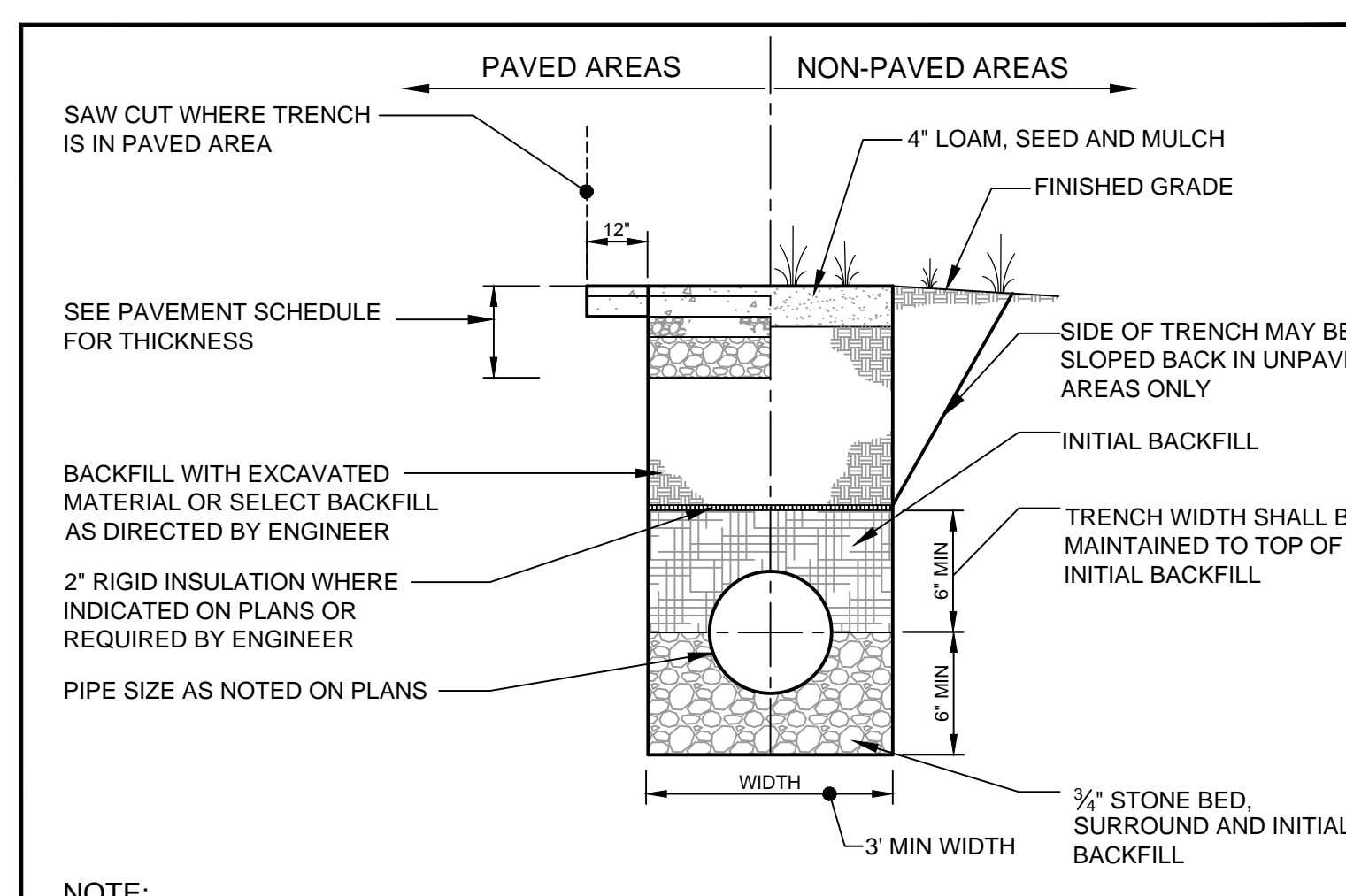


- NOTE:  
GAS LINE TO BE INSTALLED BY OTHERS. SITE CONTRACTOR IS RESPONSIBLE FOR EXCAVATION AND BACKFILL OF THE GAS LINE AND PLACEMENT OF THE WARNING TAPES AND TRACER.

**(E)** GAS SERVICE TRENCH SECTION  
N.T.S.

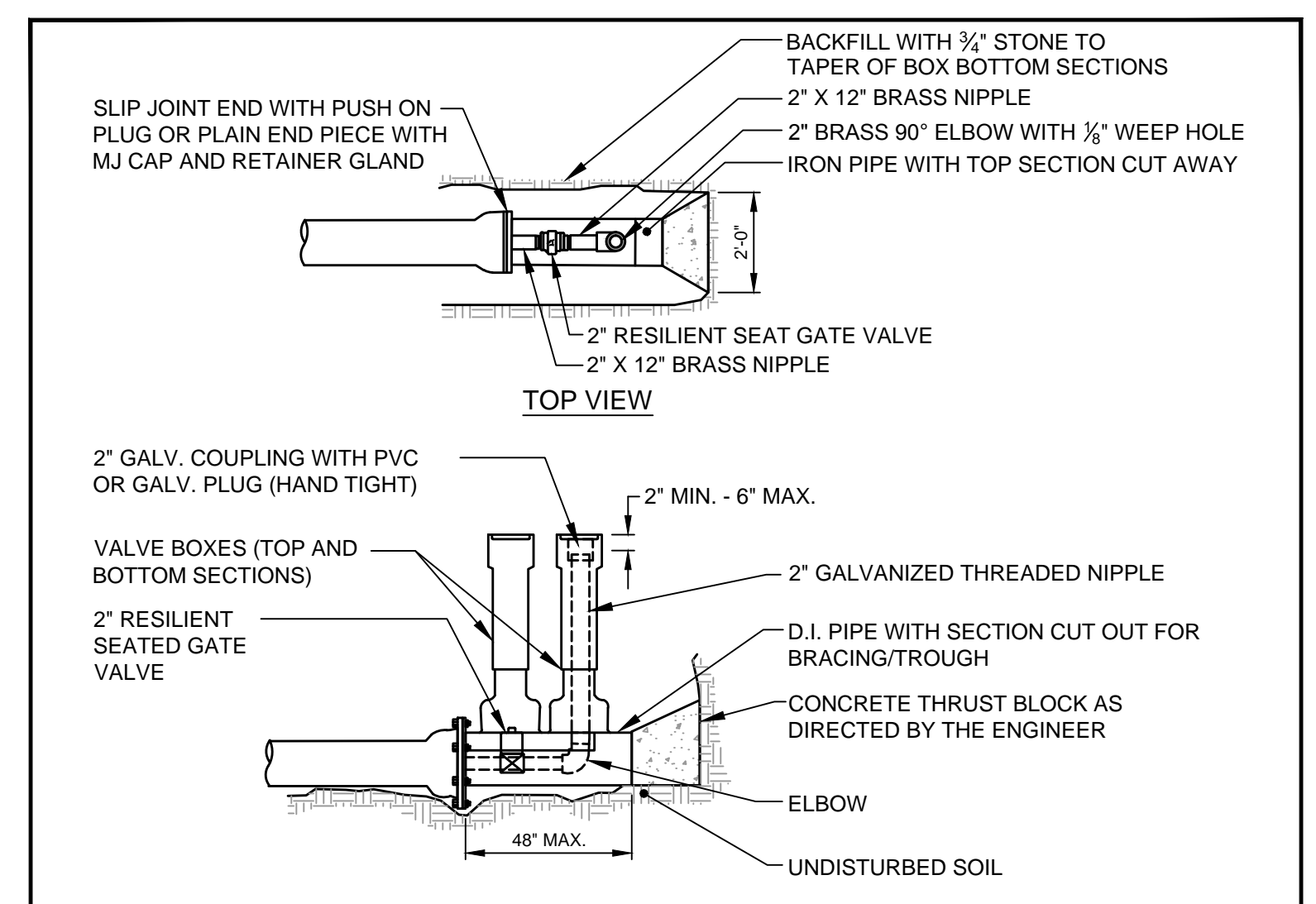


**(F)** PIPE CONNECTION TO PRECAST CONCRETE SANITARY SEWER AND STORM DRAINAGE STRUCTURES  
N.T.S.

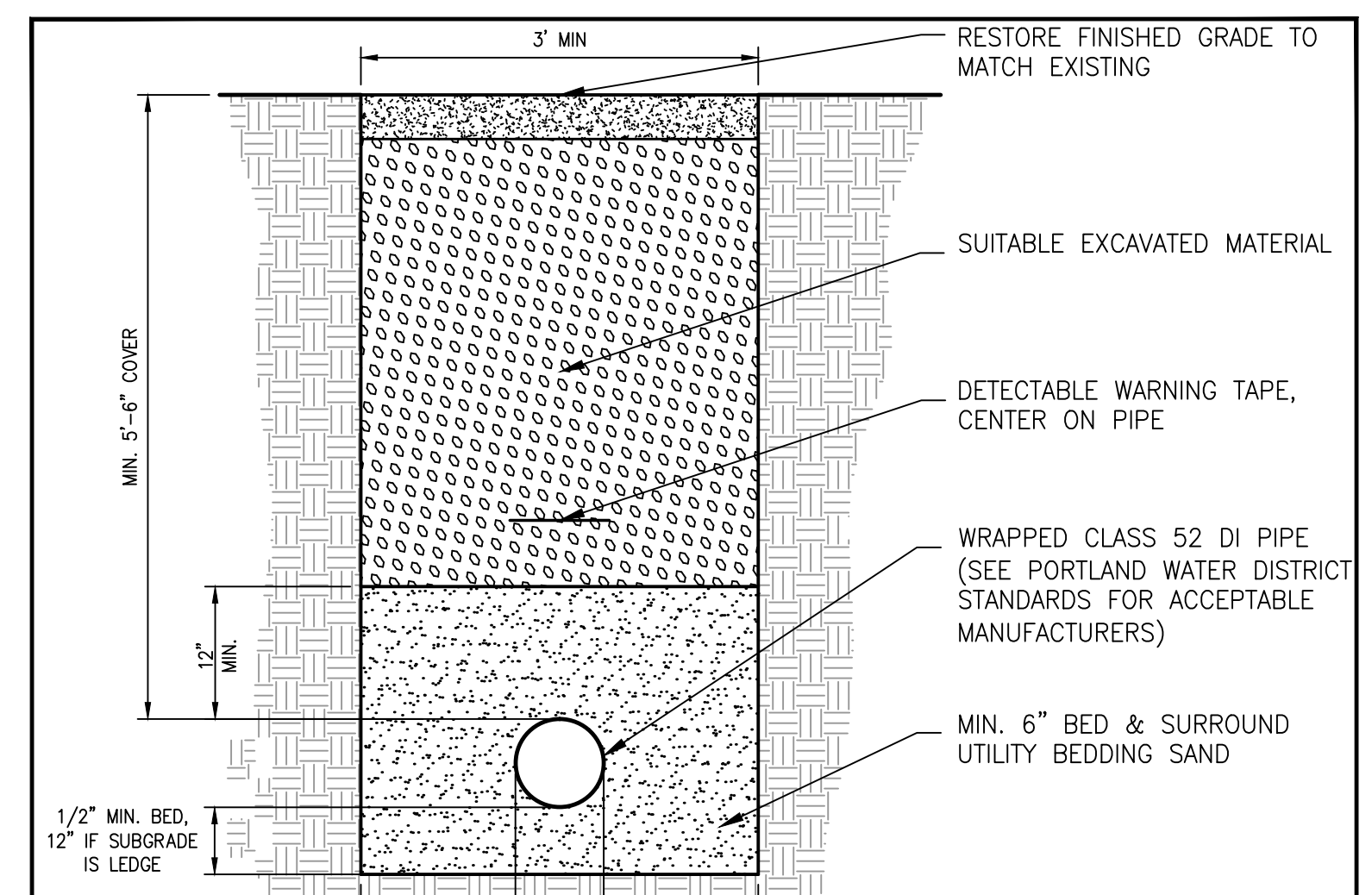


- NOTE:  
BRACING AND SHEETING OR OTHER TRENCH PROTECTION TO BE PROVIDED TO MEET APPLICABLE STATE AND O.S.H.A. SAFETY STANDARDS. ALL SUCH TRENCH PROTECTION TO BE THE RESPONSIBILITY OF THE CONTRACTOR.

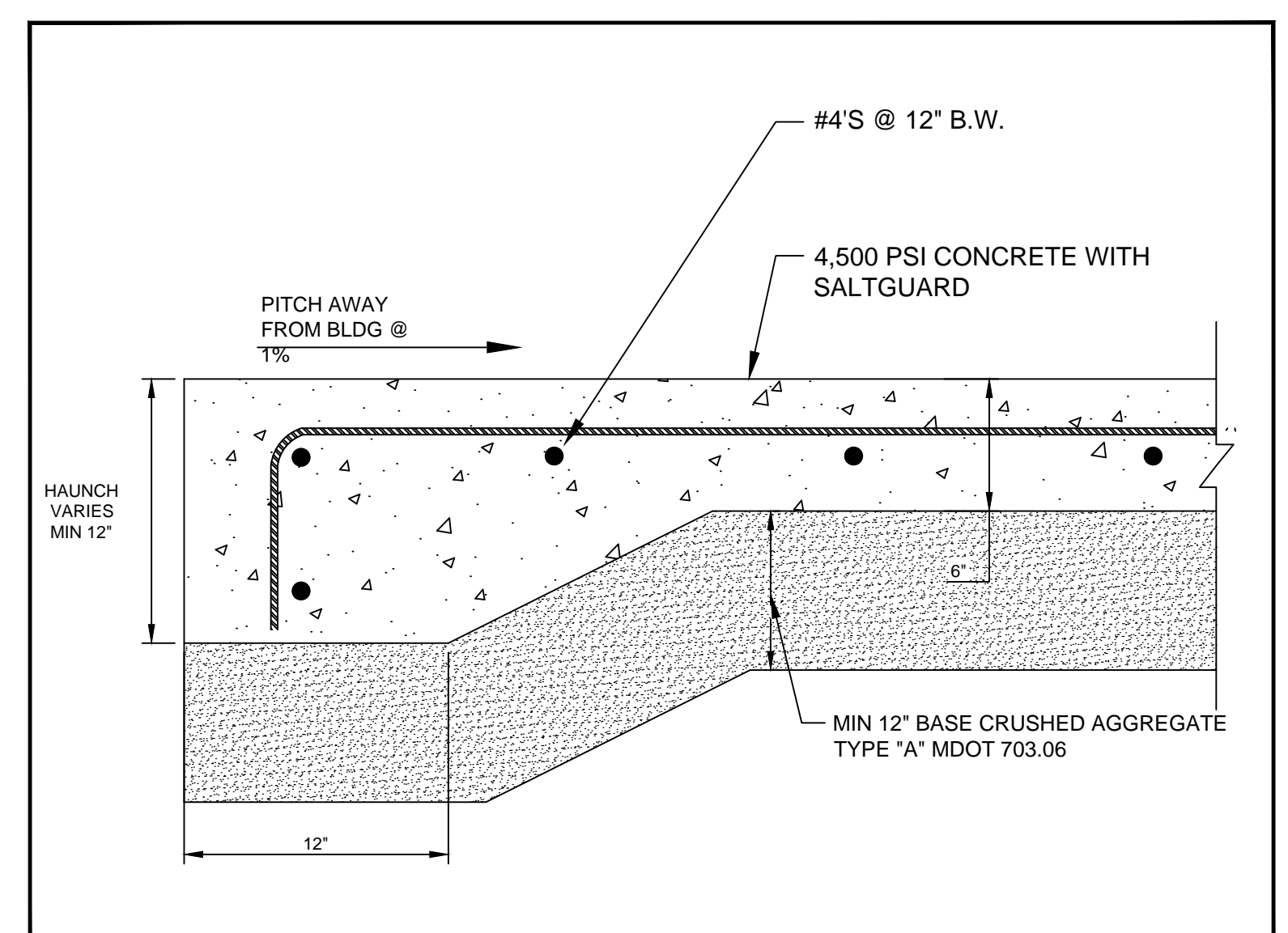
**(G)** TYPICAL SEWER AND STORM DRAIN TRENCH SECTION  
N.T.S.



**(H)** WATER MAIN BLOWOFF DETAIL  
N.T.S.

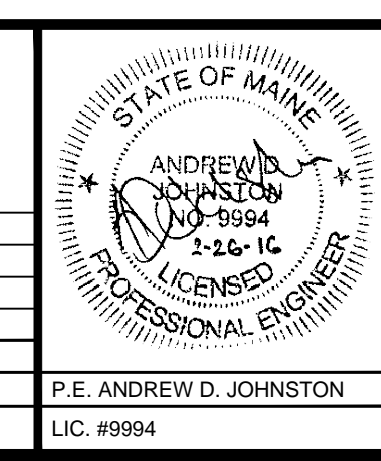


**(I)** WATER TRENCH DETAIL  
N.T.S.



**(J)** CONCRETE PAD DETAIL  
N.T.S.

REV	DATE	DESCRIPTION	REVISIONS
5	03.01.16	ISSUED FOR BID SET	
4	02.15.16	ISSUED FOR 90% MSHA SUBMISSION	
3	11.20.15	ISSUED FOR 50% MSHA SUBMISSION	
2	07.28.15	REISSUED FOR SITE PLAN REVIEW	
1	06.24.15	ISSUED FOR SITE PLAN REVIEW	



PROJECT: MOTHERHOUSE SENIOR HOUSING  
SHEET TITLE: UTILITY DETAILS  
CLIENT: MOTHERHOUSE ASSOCIATES LP

**FST** 100 YEARS  
**FAY, SPOFFORD & THORNDIKE**  
ENGINEERS • PLANNERS • SCIENTISTS  
778 MAIN ST., SUITE 8, SOUTH PORTLAND, ME 04106

DRAWN: DED DATE: JANUARY 2016  
DESIGNED: ADJ SCALE: AS NOTED  
CHECKED: ADJ JOB NO. SP-M162  
FILE NAME: SP-M162 DETAILS  
SHEET: C7.0