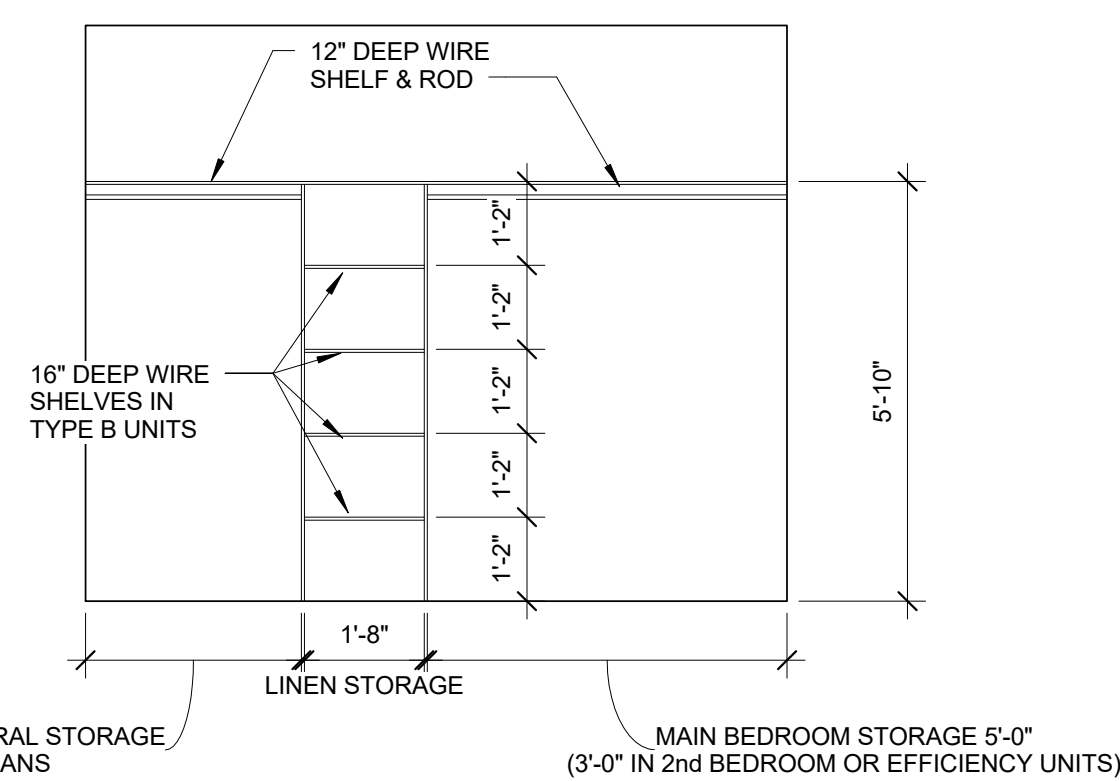
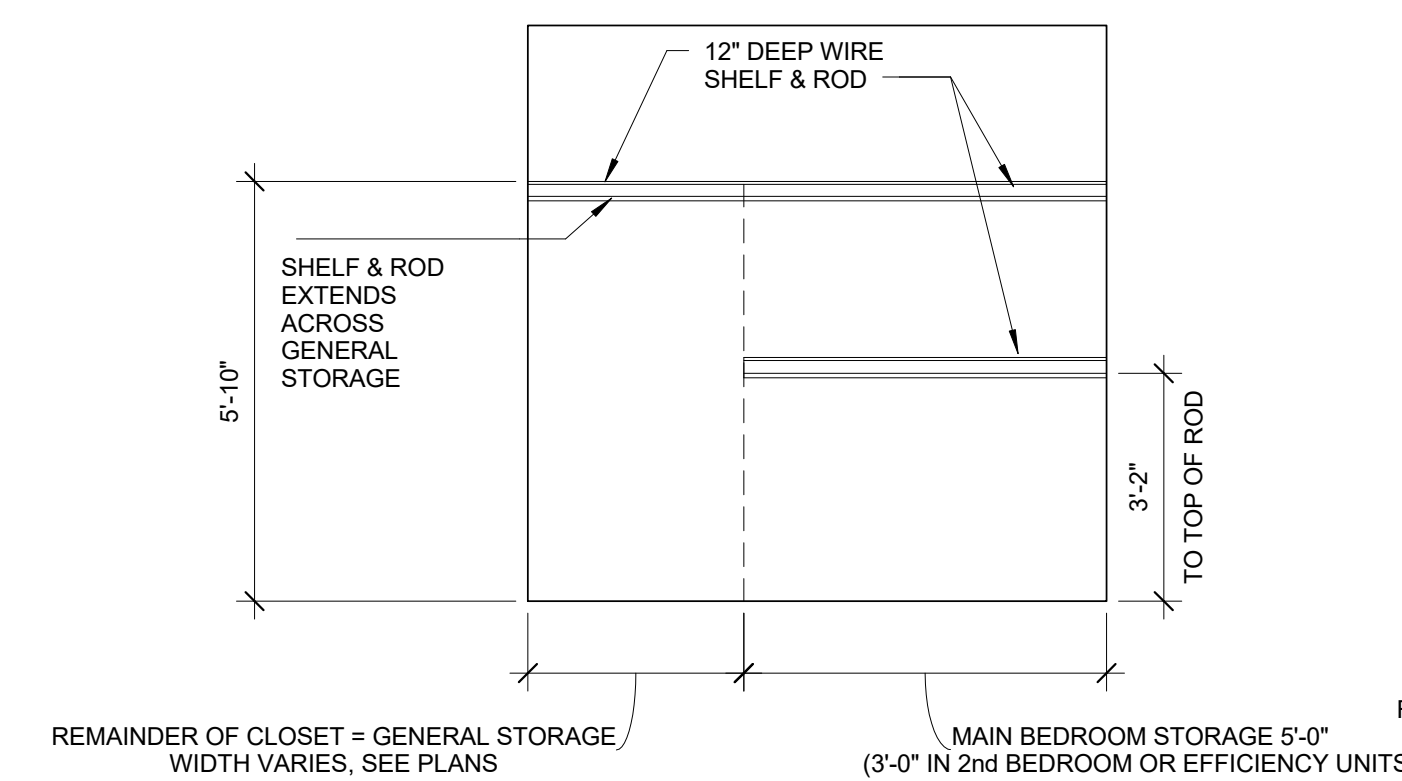


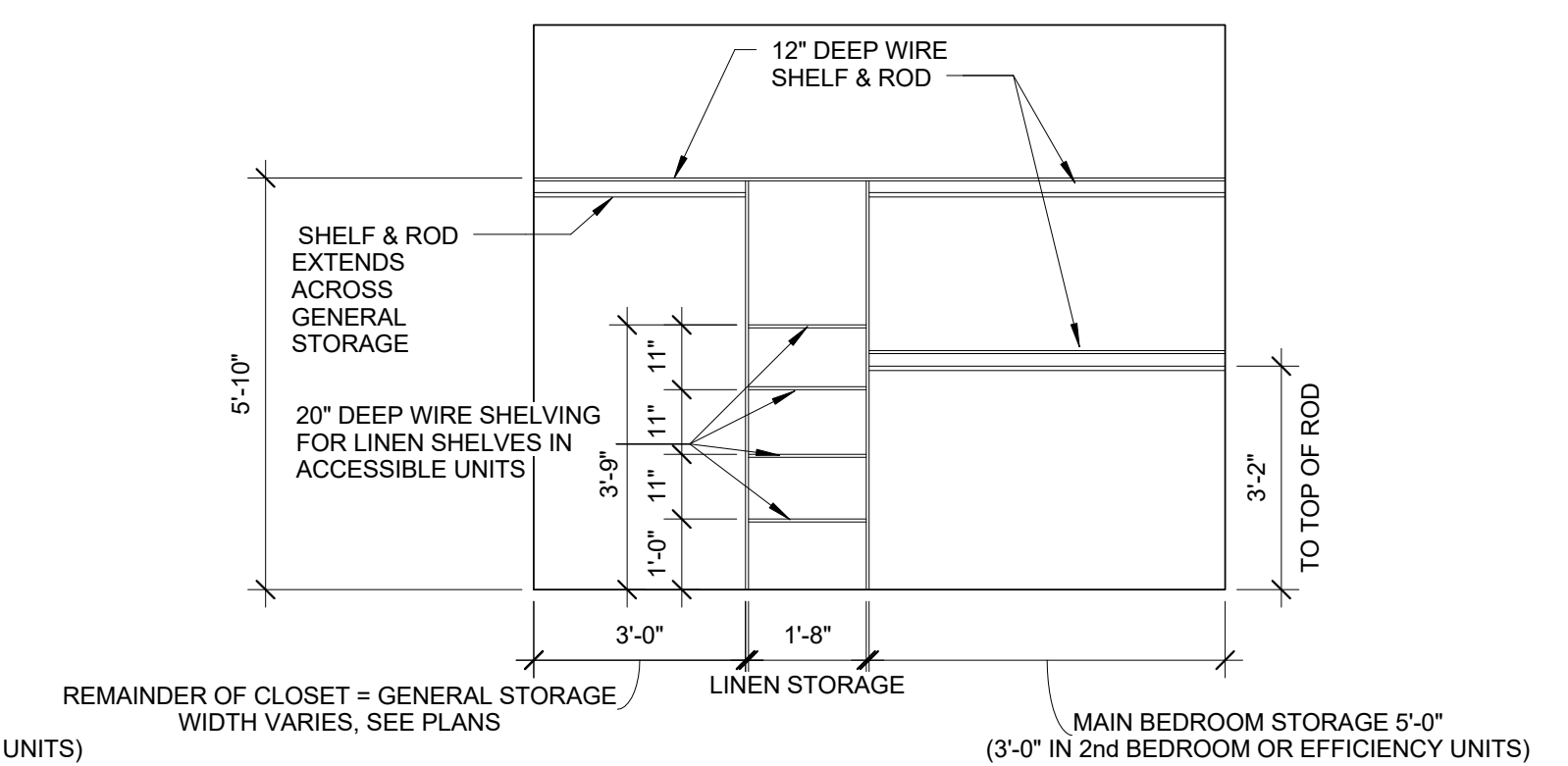
ELEVATION OF TYPE B BEDROOM CLOSET WHEN THE PLANS SHOW GENERAL STORAGE IN THE BEDROOM CLOSET.



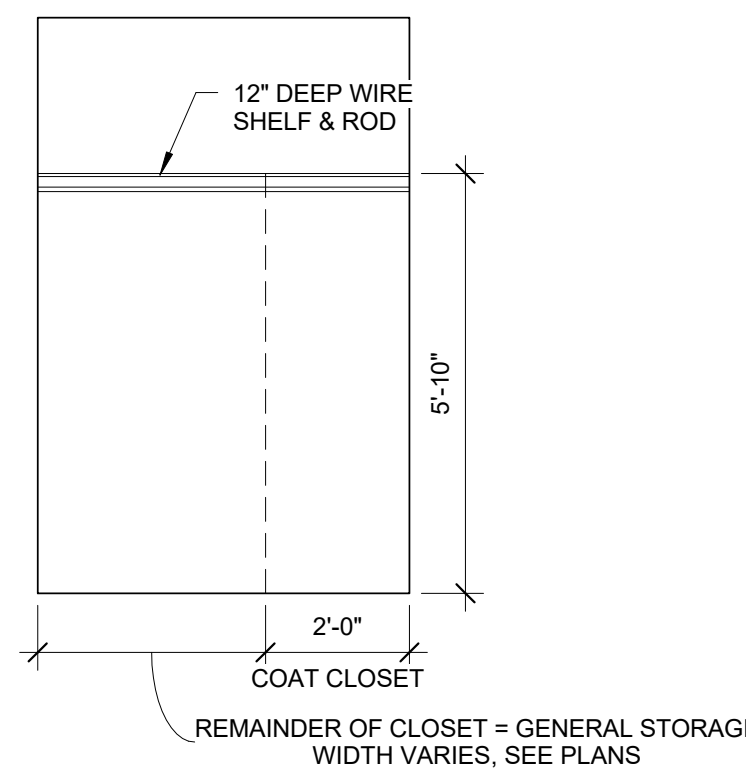
ELEVATION OF TYPE B BEDROOM CLOSET WHEN THE PLANS SHOW LINEN STORAGE AND GENERAL STORAGE IN THE BEDROOM CLOSET. LINEN STORAGE TO BE LOCATED TOWARDS CENTER OF CLOSET DOOR OPENING - SEE PLANS



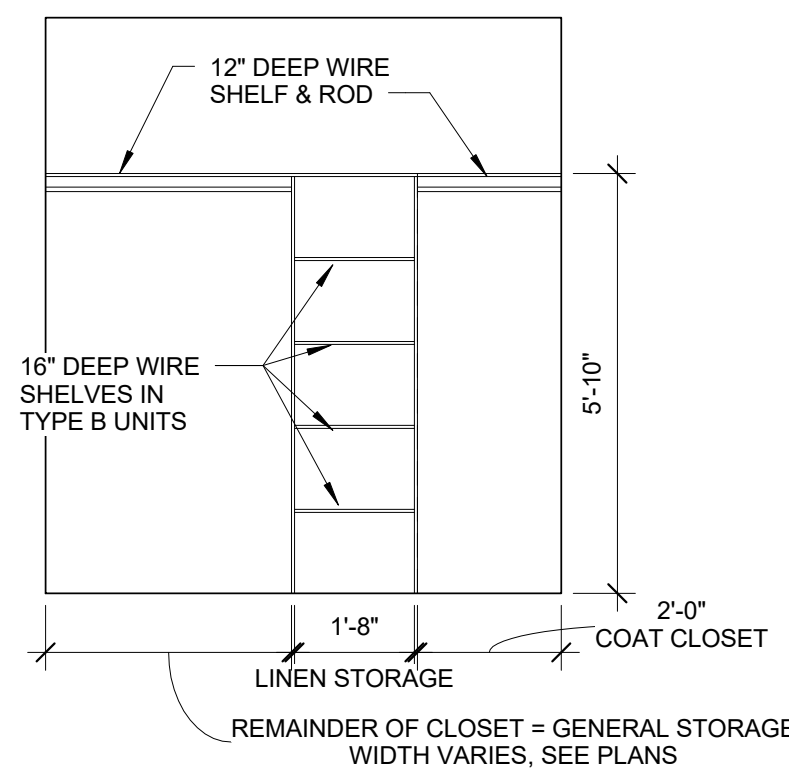
ELEVATION OF BEDROOM CLOSET IN ACCESSIBLE UNIT WHEN THE PLANS SHOW GENERAL STORAGE IN THE BEDROOM CLOSET.



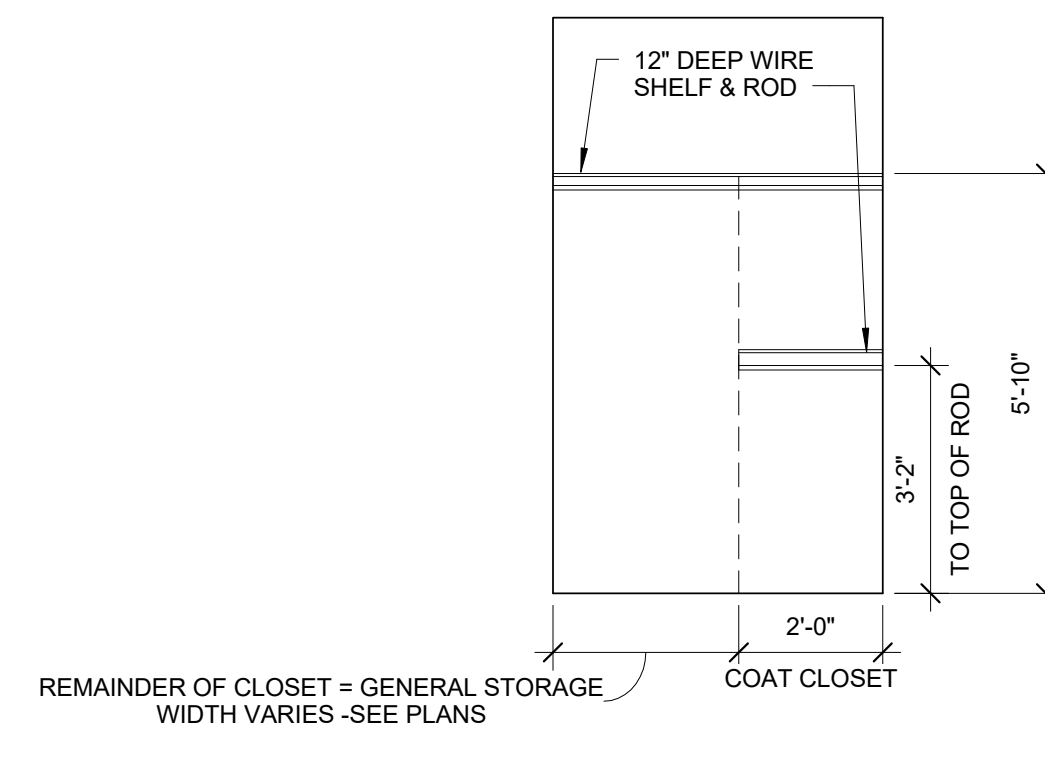
ELEVATION OF BEDROOM CLOSET IN ACCESSIBLE UNIT WHEN THE PLANS SHOW LINEN STORAGE AND GENERAL STORAGE IN THE BEDROOM CLOSET. LINEN STORAGE TO BE LOCATED TOWARDS CENTER OF CLOSET DOOR OPENING - SEE PLANS



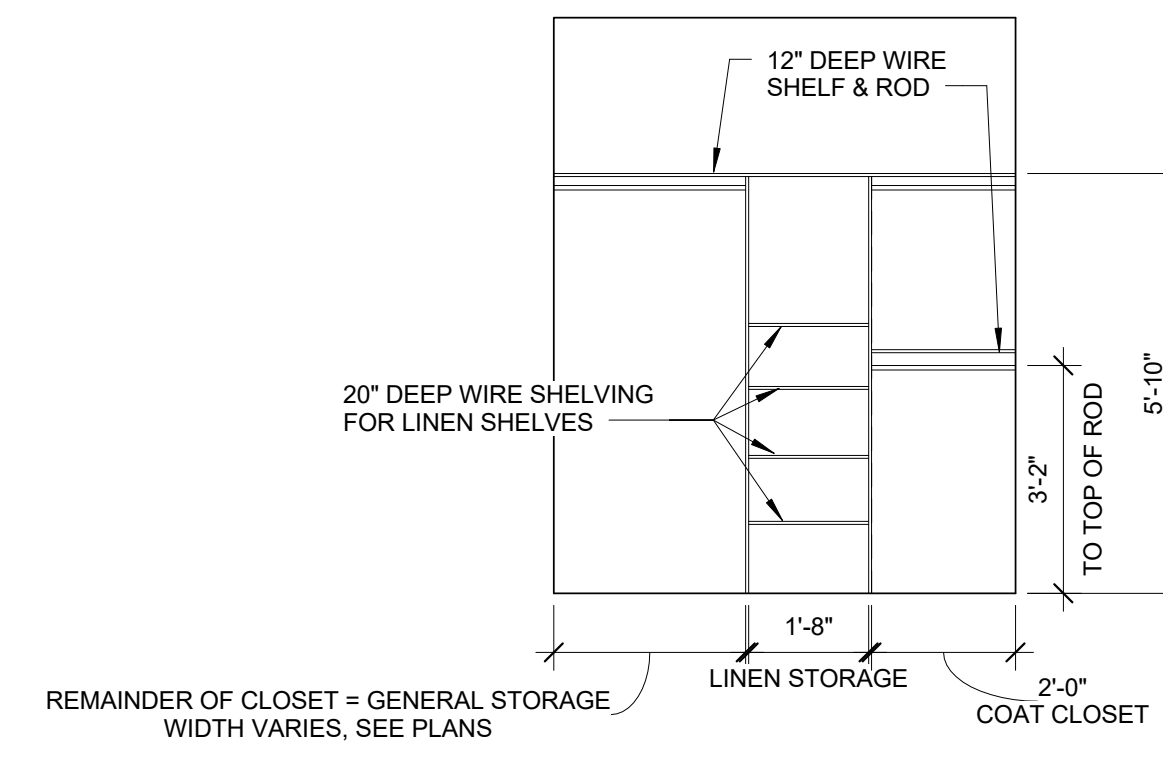
ELEVATION OF TYPE B COAT CLOSET WHEN THE PLANS SHOW GENERAL STORAGE IN THE COAT CLOSET.



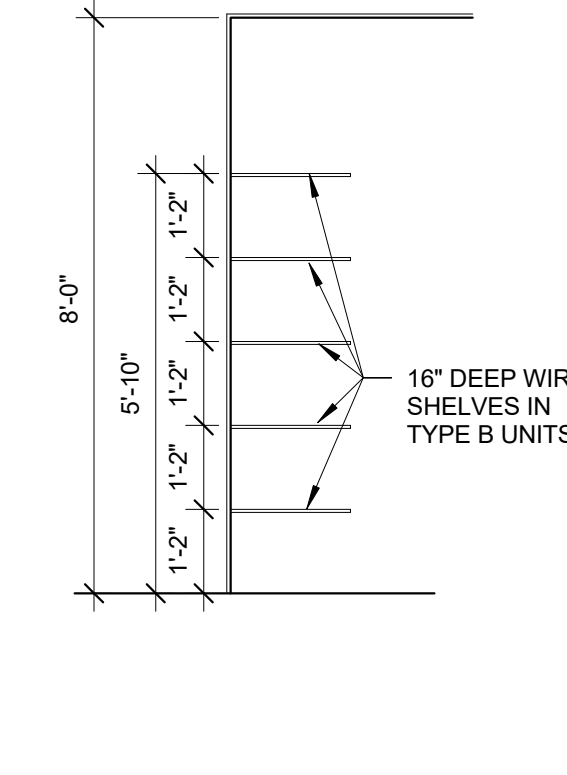
ELEVATION OF TYPE B COAT CLOSET WHEN THE PLANS SHOW LINEN STORAGE AND GENERAL STORAGE IN THE COAT CLOSET. LINEN STORAGE TO BE LOCATED TOWARDS CENTER OF CLOSET DOOR OPENING - SEE PLANS



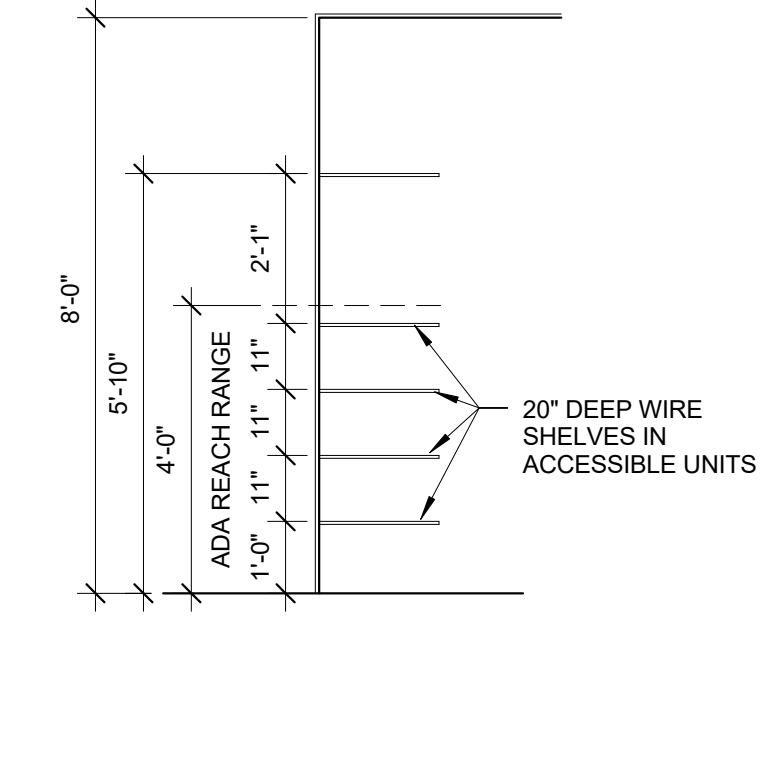
ELEVATION OF COAT CLOSET IN ACCESSIBLE UNIT WHEN THE PLANS SHOW GENERAL STORAGE IN THE COAT CLOSET



ELEVATION OF COAT CLOSET IN ACCESSIBLE UNIT WHEN THE PLANS SHOW LINEN STORAGE AND GENERAL STORAGE IN THE COAT CLOSET. LINEN STORAGE TO BE LOCATED TOWARDS CENTER OF CLOSET DOOR OPENING - SEE PLANS



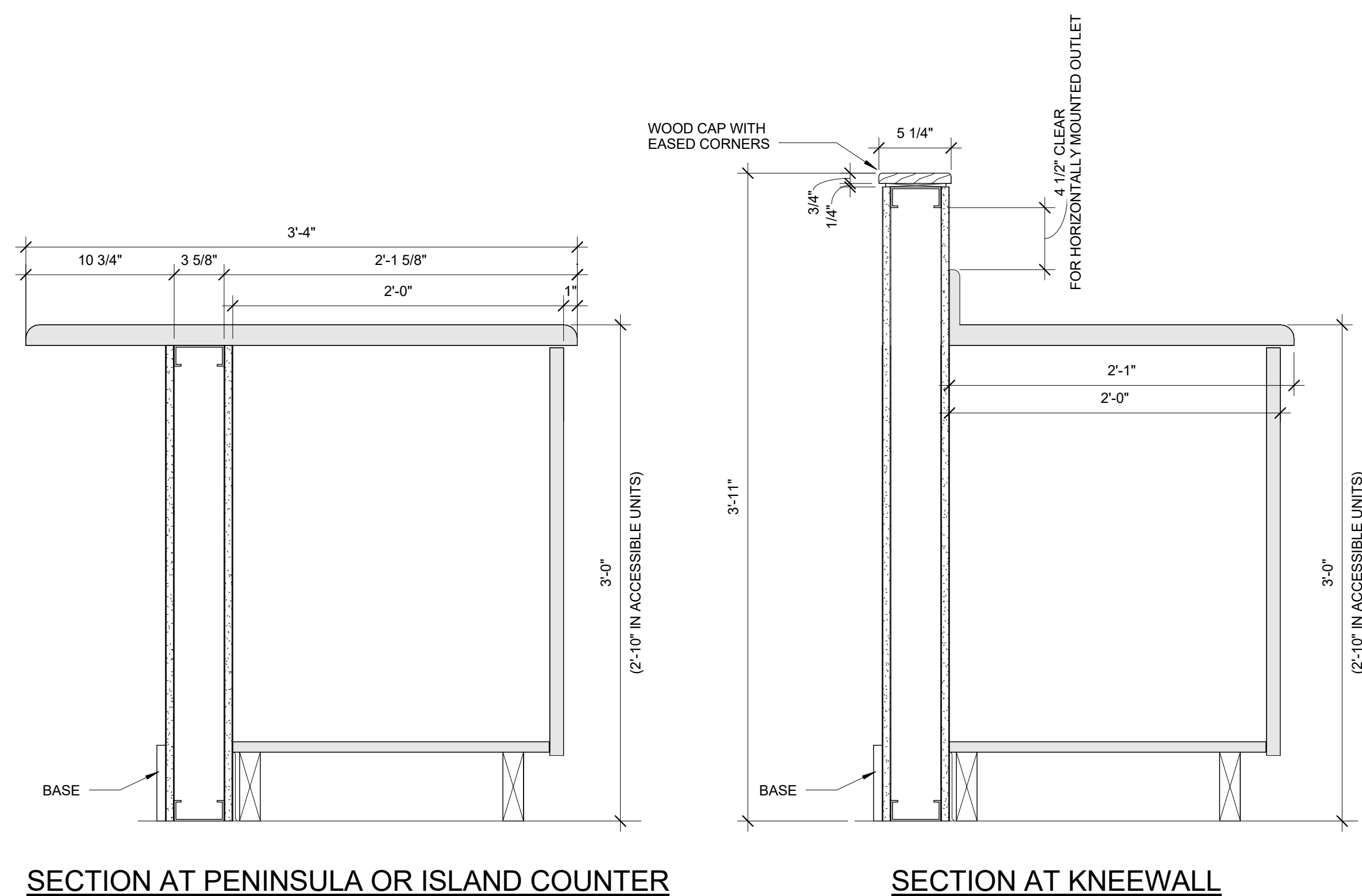
SECTION THROUGH BATHROOM LINEN CLOSETS AND KITCHEN PANTRY CLOSETS IN TYPE B UNITS



SECTION THROUGH BATHROOM LINEN CLOSETS AND KITCHEN PANTRY CLOSETS IN ACCESSIBLE UNITS

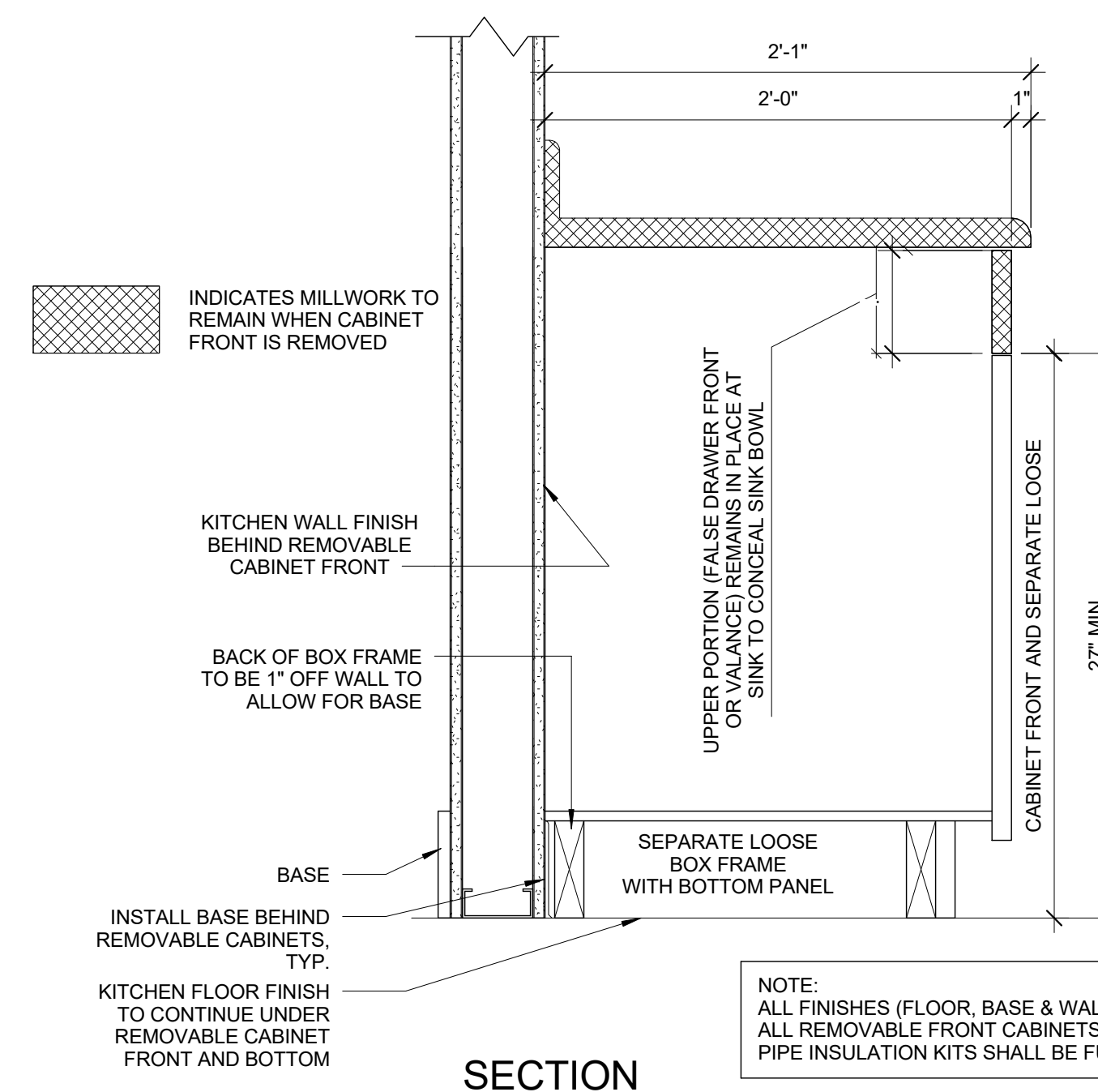
1 TYPICAL CLOSET SHELVING LAYOUTS

3/8" = 1'-0"

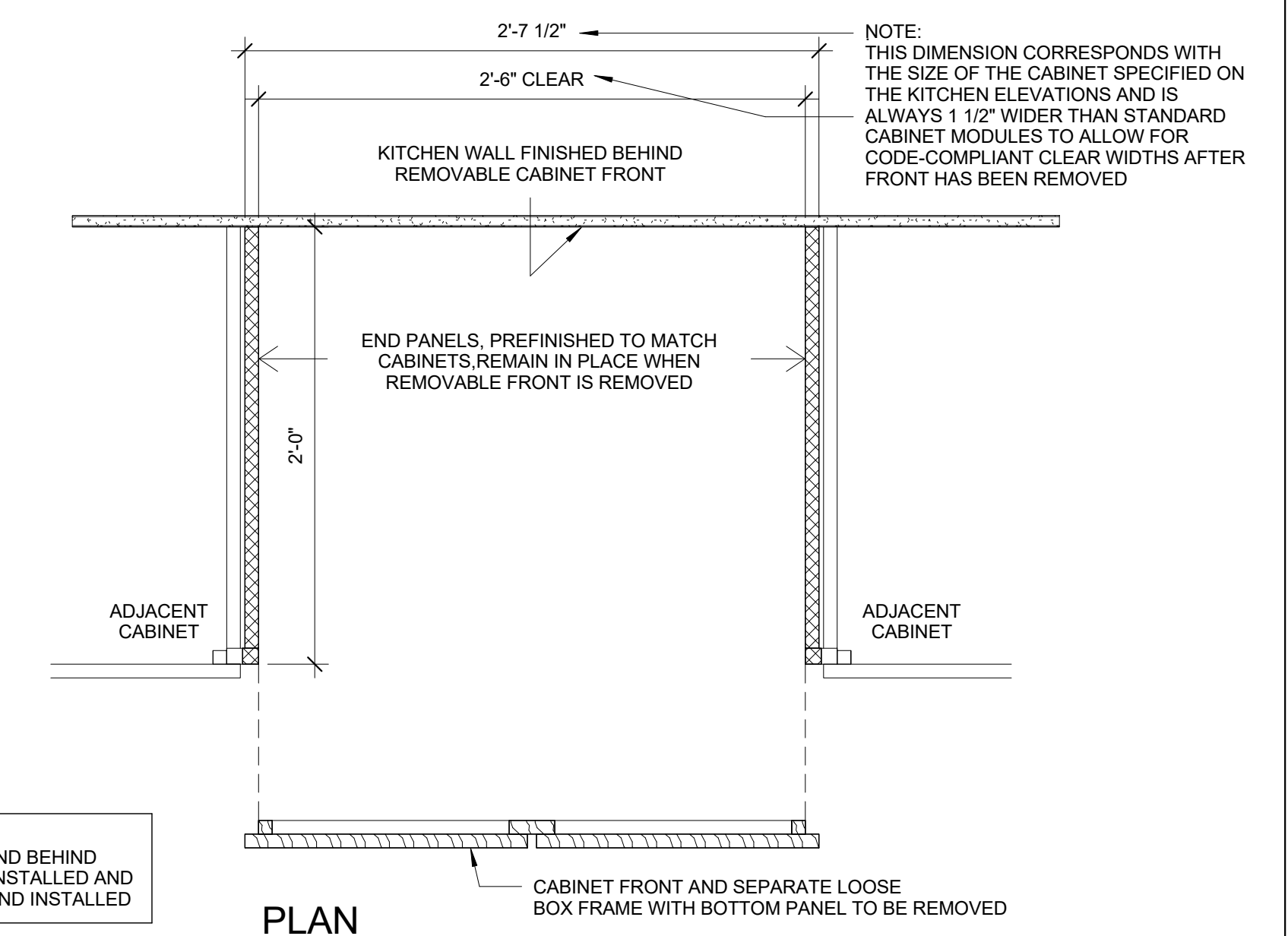


SECTION AT PENINSULA OR ISLAND COUNTER

SECTION AT KNEEWALL



SECTION



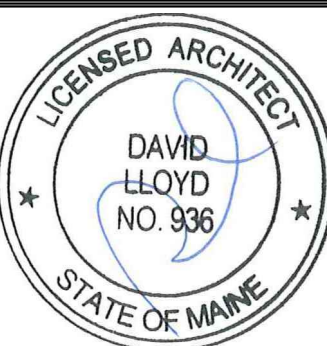
PLAN

3 KITCHEN CABINET DETAILS

1 1/2" = 1'-0"

2 REMOVABLE KITCHEN CABINET DETAILS FOR ACCESSIBLE UNITS

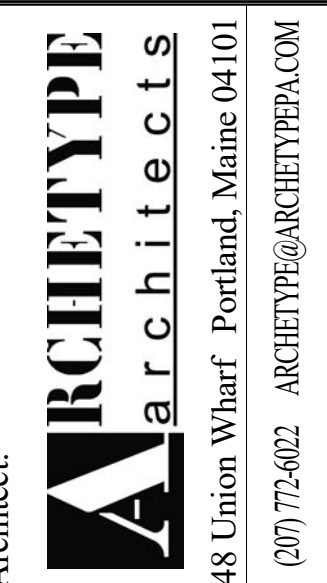
1 1/2" = 1'-0"



MOTHERHOUSE LLC

Prepared For:

Consultant:



Architect

Project: MOTHERHOUSE SENIOR HOUSING
605 STEVENS AVENUE
PORTLAND, MAINE 04103

Revisions:

Date: 15 FEB 2016
Scale: As indicated
UNIT CLOSET AND CABINET DETAILS

A6.30