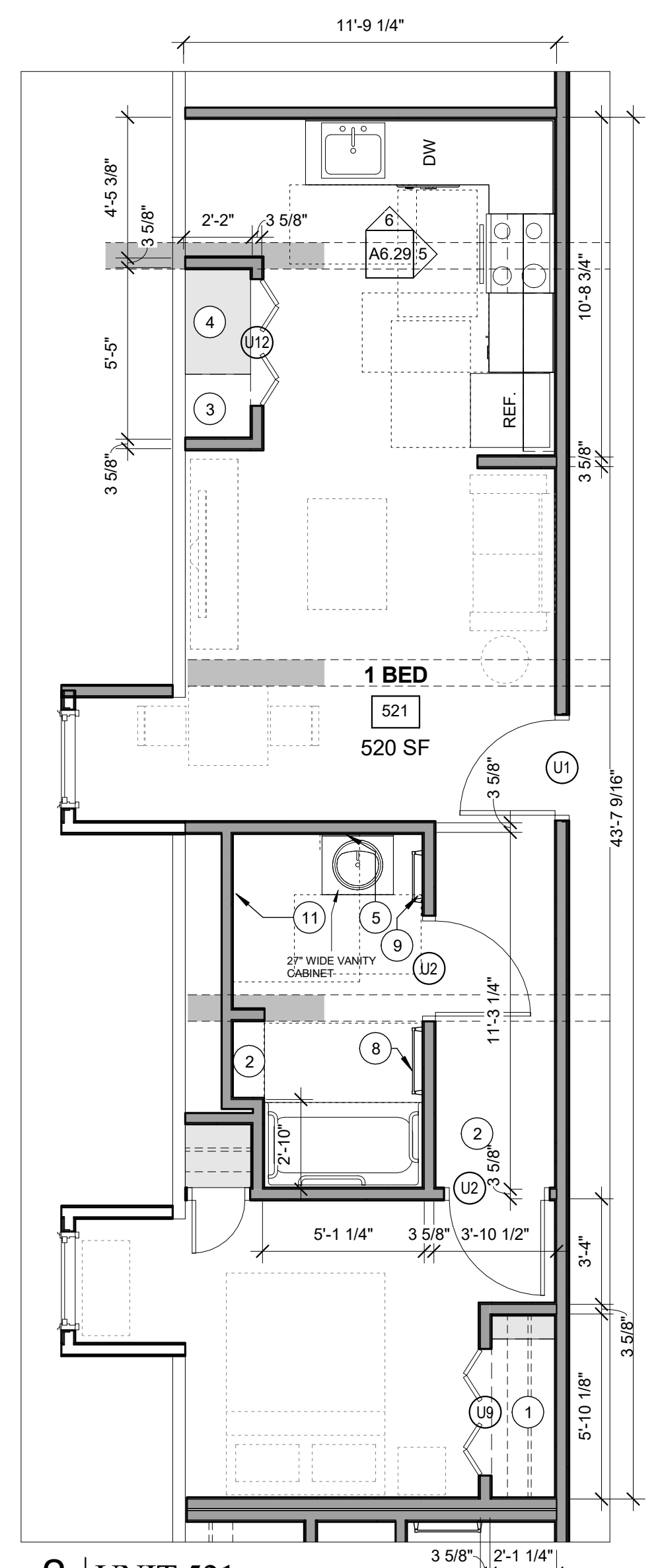
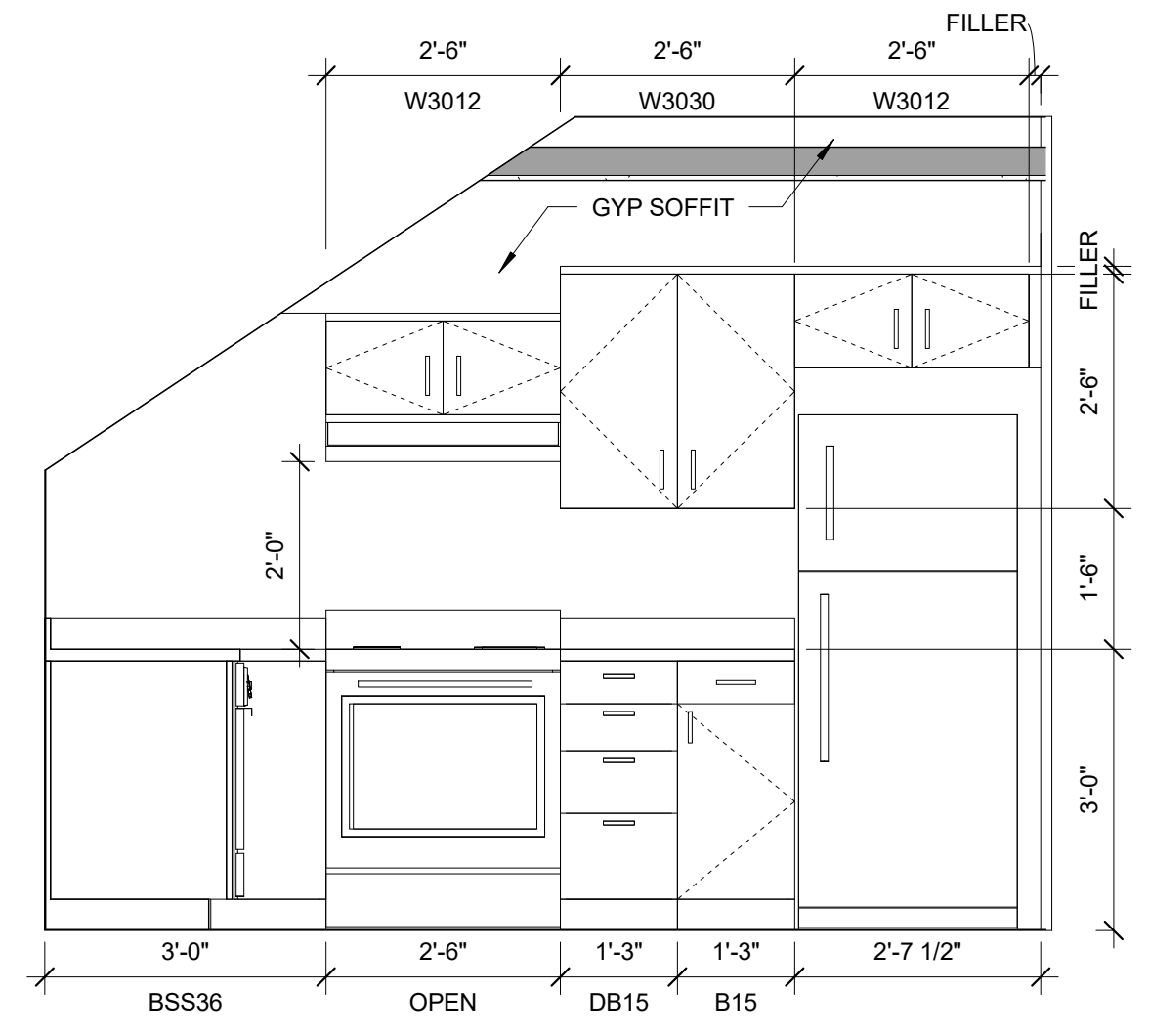


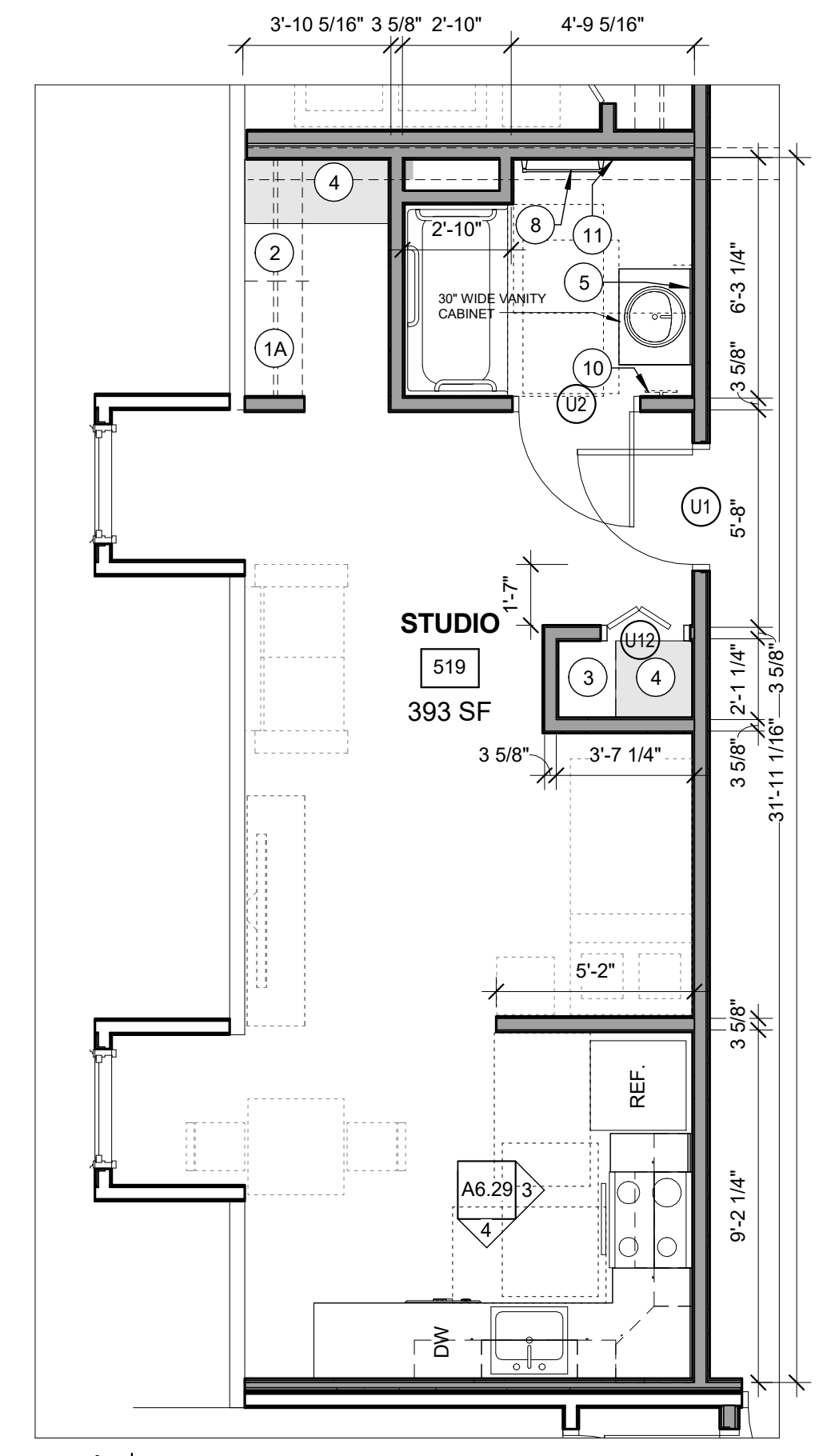
6 UNIT 521 KITCHEN ELEVATION
1/2" = 1'-0"



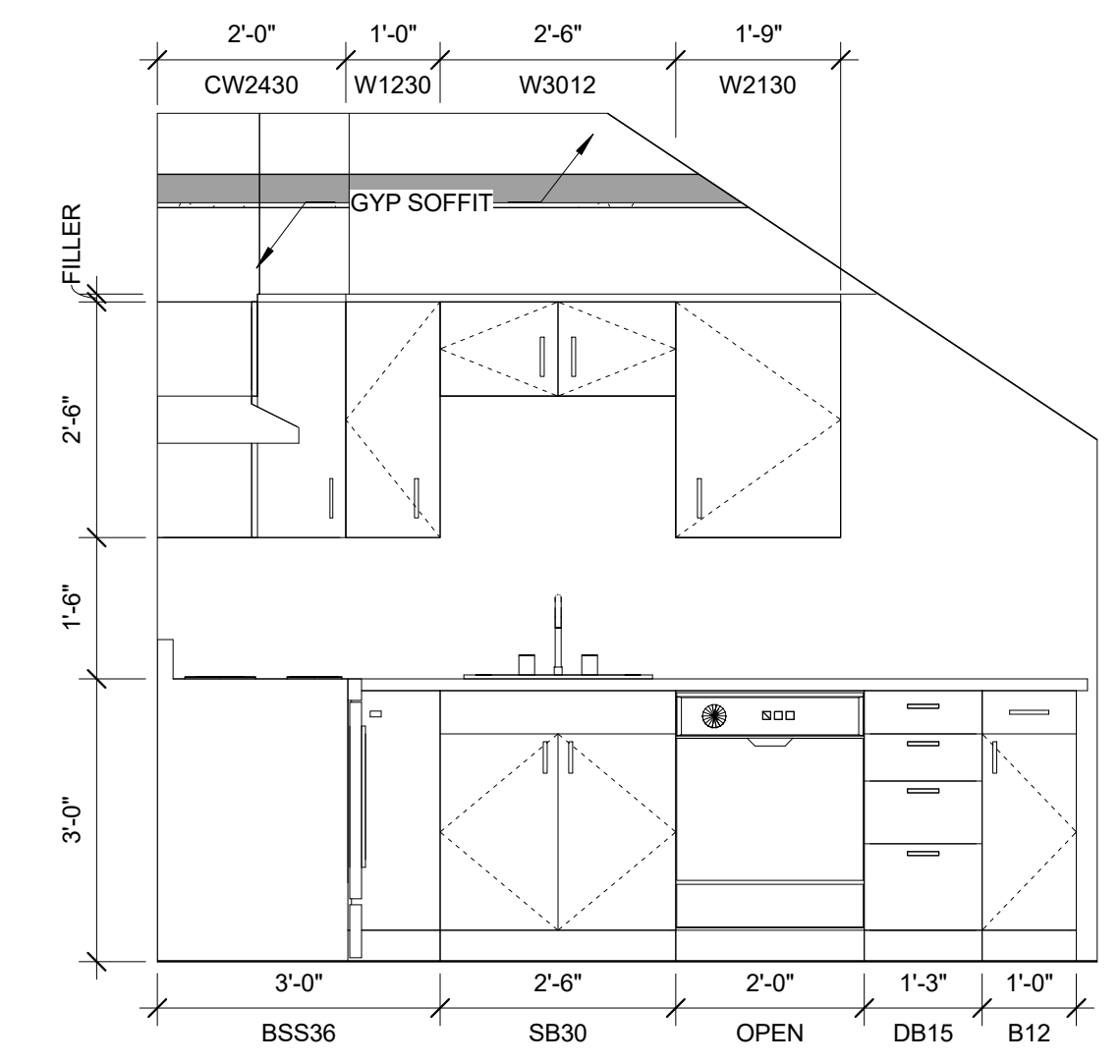
2 UNIT 521
1/4" = 1'-0"
ONE BEDROOM - ANSI 117.1 TYPE B UNIT
GENERAL STORAGE = 100.24 CU. FT



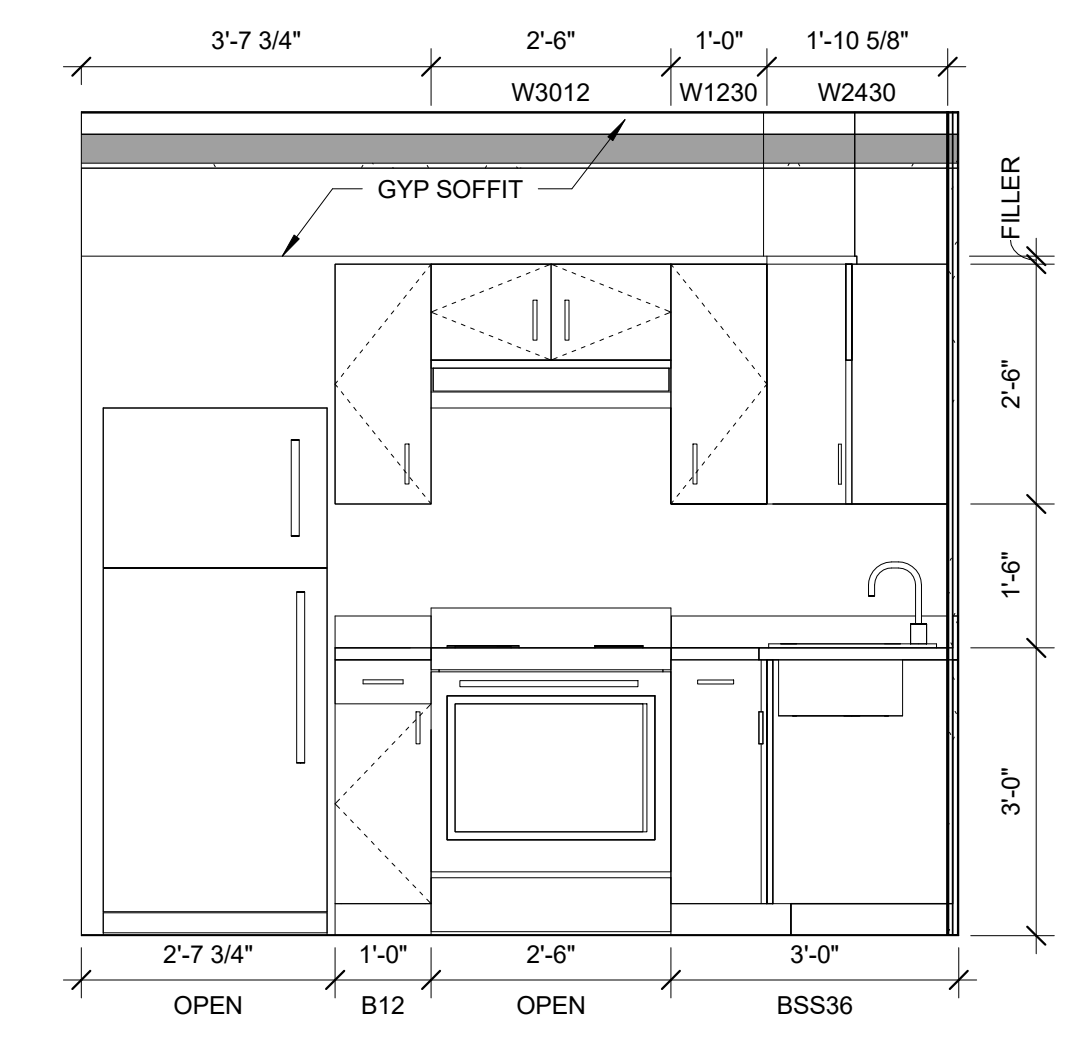
5 UNIT 521 KITCHEN ELEVATION
1/2" = 1'-0"



1 UNIT 519
1/4" = 1'-0"
EFFICIENCY - ANSI 117.1 TYPE B UNIT
GENERAL STORAGE = 81.84 CU. FT



4 UNIT 519 KITCHEN ELEVATION
1/2" = 1'-0"



3 UNIT 519 KITCHEN ELEVATION
1/2" = 1'-0"

- TYPICAL UNIT STORAGE & BATHROOM ACCESSORIES LEGEND**
- 1. TYPICAL UNIT BEDROOM CLOSET
2'-0" DEEP X 5'-0" WIDE BY 8'-0" HIGH
 - 1A. EFFICIENCY UNIT BEDROOM CLOSET
2'-0" DEEP X 3'-0" WIDE BY 8'-0" HIGH
 - 2. LINEN STORAGE CLOSET
TYPE B UNITS = 1'-6" DEEP X 1'-8" (MIN) WIDE.
ACCESSIBLE UNITS = 1'-8" DEEP X 1'-8" (MIN) WIDE.
PROVIDE WITH (4) SHELVES SPACED AS SHOWN ON
DTL 1/A6.30. YIELDS 10 SF MINIMUM OF SHELVING AREA.
 - 3. COAT CLOSET
(1) 2'-0" DEEP X 2'-0" DEEP BY 8'-0" HIGH.
 - 4. GENERAL STORAGE
TYPICAL FINISHED CEILING HEIGHT IS 8'-0". EACH LINEAR
FOOT OF GENERAL STORAGE CLOSET YIELDS 16 CUBIC
FEET OF STORAGE. TOTAL CUBIC FEET HAS BEEN
INDICATED ON EACH UNIT AS MEETING OR EXCEEDING
100 CUBIC FEET FOR 1 BEDROOM UNITS, 50 CUBIC FEET
FOR EFFICIENCIES. SEE CLOSET AREA. SHOWN IN LIGHT
GREY.
 - 5. SURFACE MOUNTED MEDICINE CABINET
REFER TO SPECIFICATIONS
 - 6. NOT USED
 - 7. NOT USED
 - 8. 24" TOWEL BAR
 - 9. 18" TOWEL BAR
 - 10. TAYMOR 01-9404 TOWEL RING
 - 11. TOILET PAPER HOLDER
- = WALL WHERE SHOWER CONTROLS &
SHOWER HEAD MUST BE LOCATED
- NOTE:** VANITY CABINET WIDTHS ARE LISTED - VANITY
TOPS MUST BE 1" WIDER TO OVERHANG 1/2" EACH SIDE