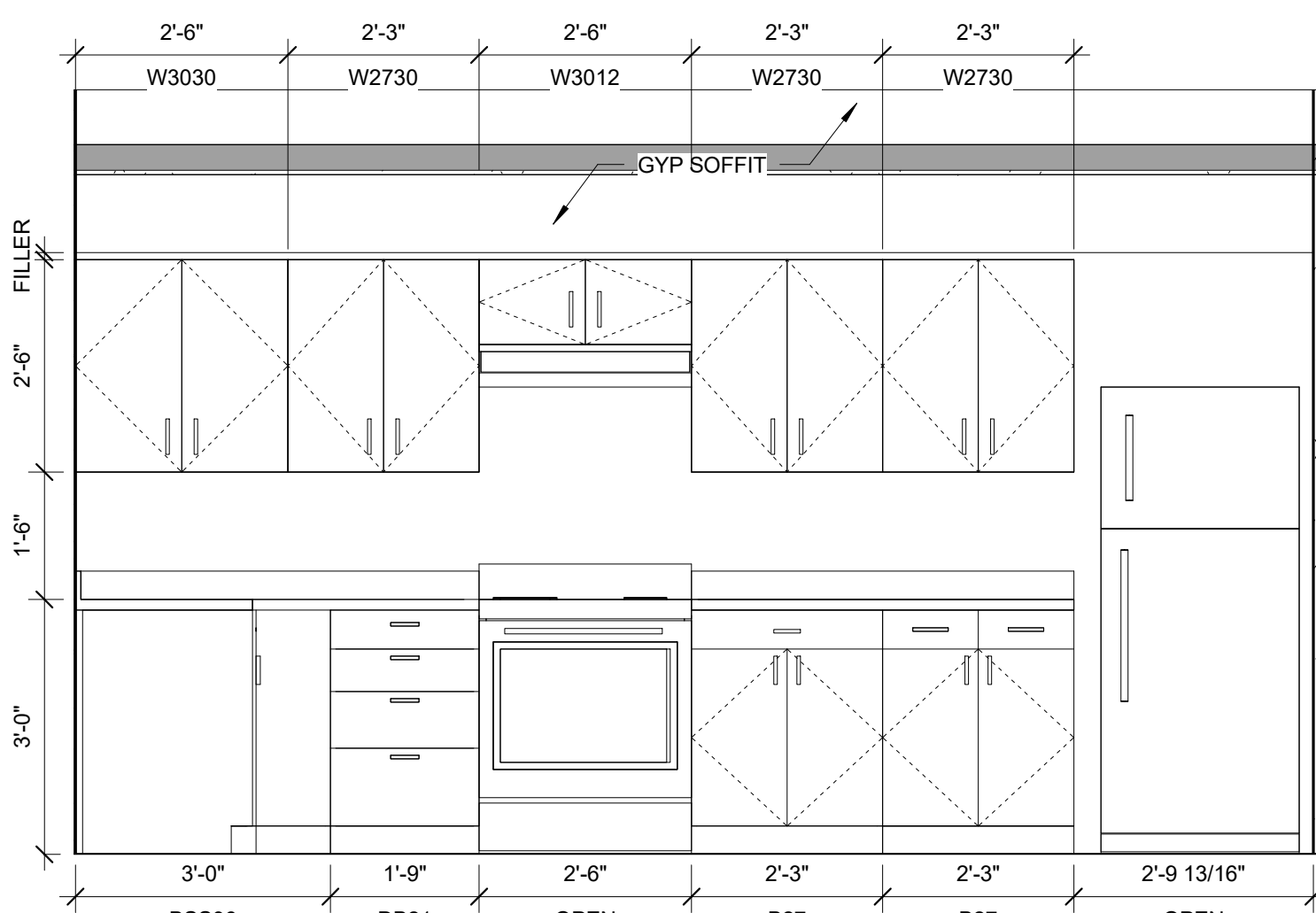
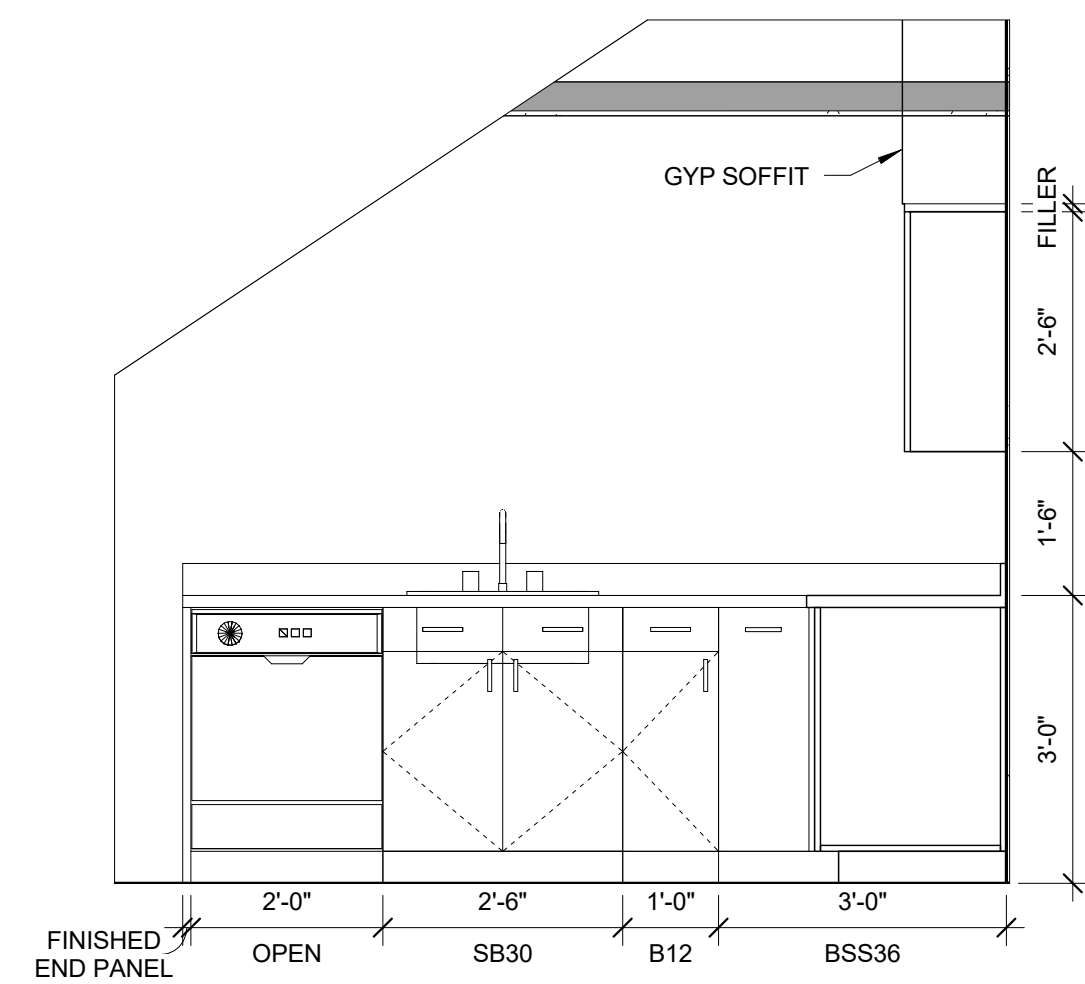


3 | UNIT 518
1/4" = 1'-0"

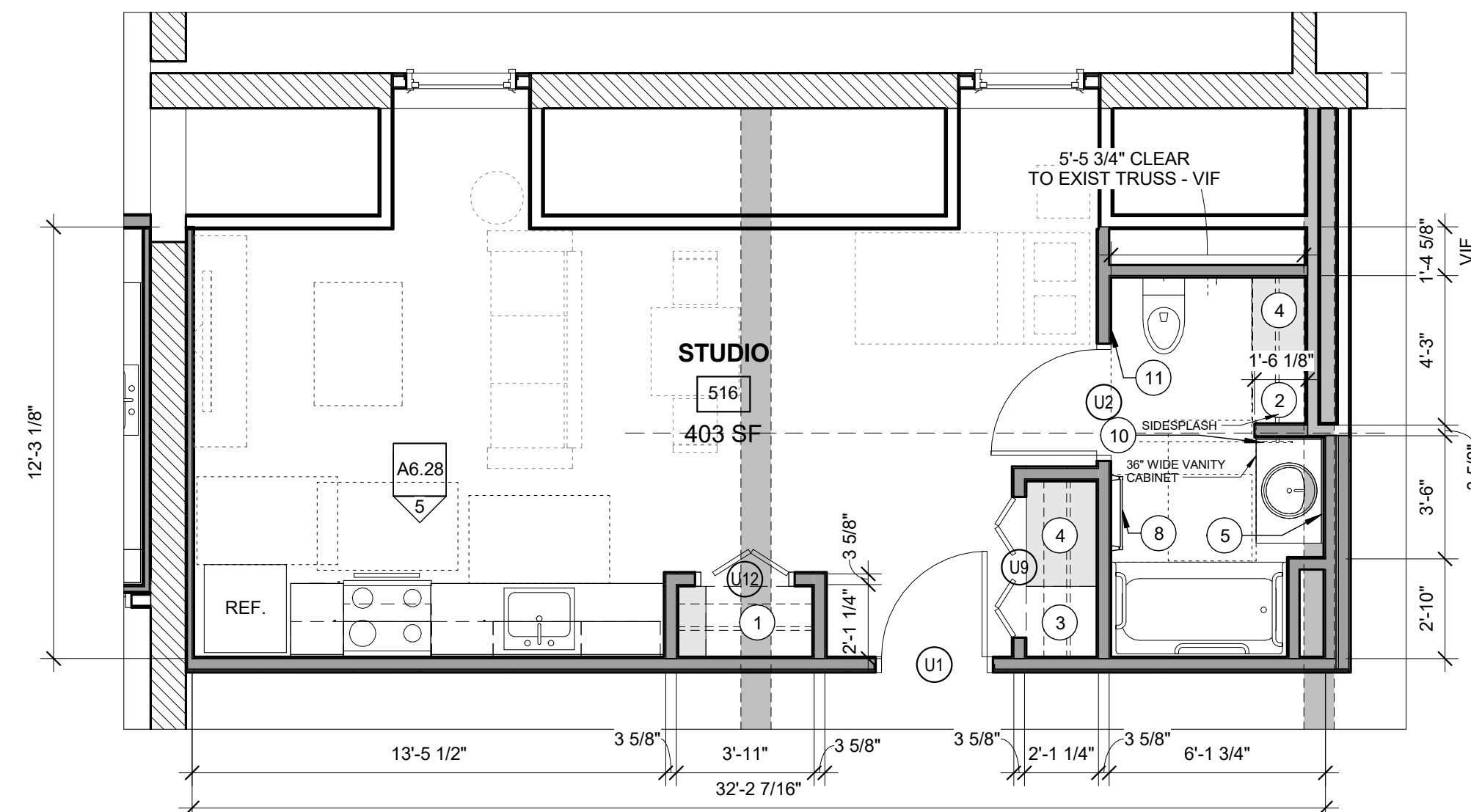
ONE BEDROOM - ANSI 117.1 TYPE B UNIT
GENERAL STORAGE = 176.08 CU. FT



6 | UNIT 518 KITCHEN ELEVATION
1/2" = 1'-0"



7 | UNIT 518 KITCHEN ELEVATION
1/2" = 1'-0"

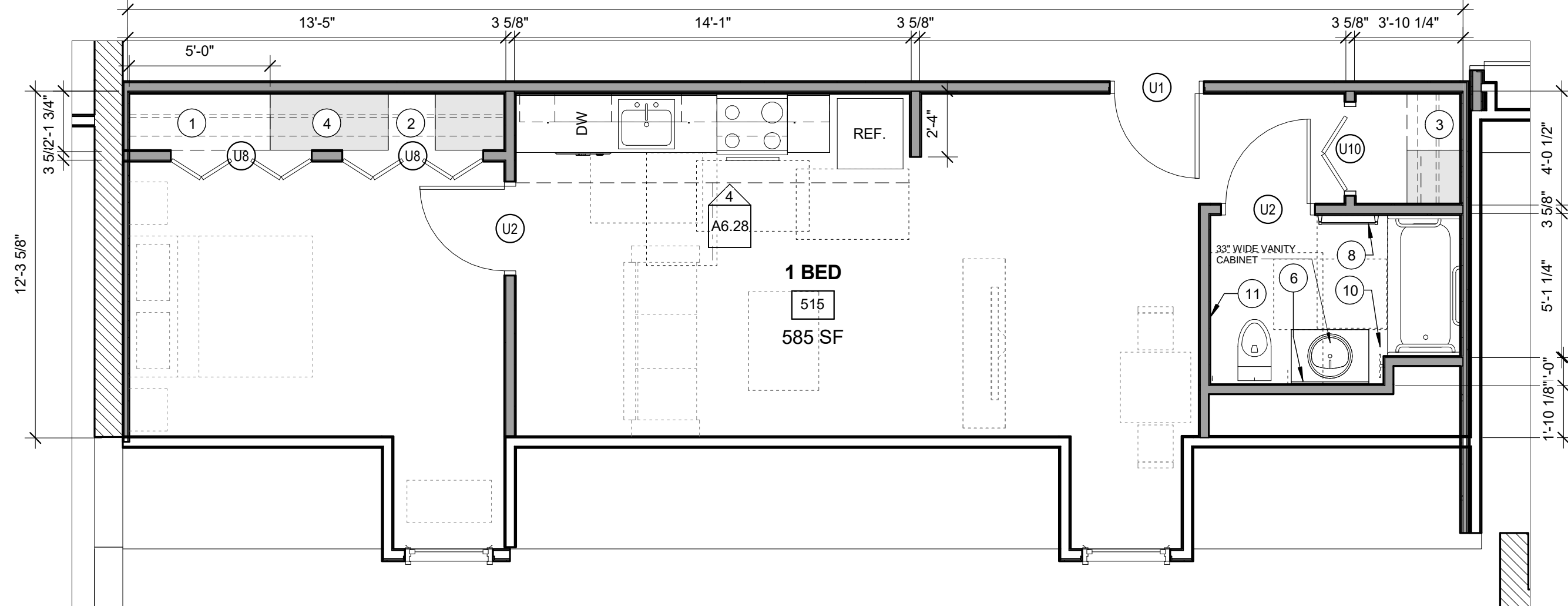


2 | UNIT 516
1/4" = 1'-0"

ONE BEDROOM - ANSI 117.1 TYPE B UNIT
GENERAL STORAGE = 136.56 CU. FT

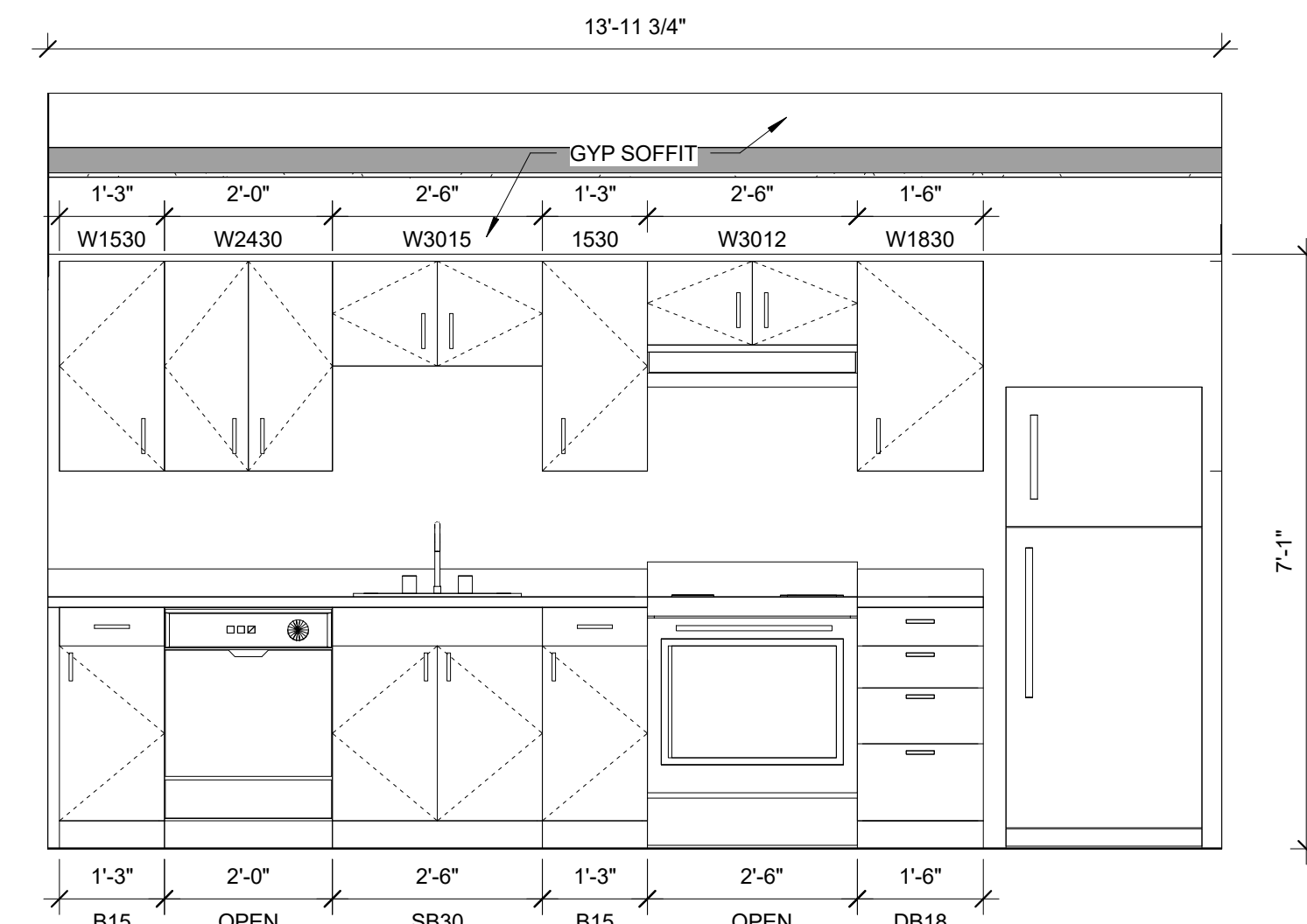
TYPICAL UNIT STORAGE & BATHROOM ACCESSORIES LEGEND

1. TYPICAL UNIT BEDROOM CLOSET
2'-0" DEEP X 5'-0" WIDE BY 8'-0" HIGH
 - 1A. EFFICIENCY UNIT BEDROOM CLOSET
2'-0" DEEP X 3'-0" WIDE BY 8'-0" HIGH
 2. LINEN STORAGE CLOSET
TYPICAL FINISHED CEILING HEIGHT IS 8'-0". EACH LINEAR FOOT OF GENERAL STORAGE CLOSET YIELDS 16 CUBIC FEET OF STORAGE. TOTAL CUBIC FEET HAS BEEN INDICATED ON EACH UNIT AS MEETING OR EXCEEDING 100 CUBIC FEET FOR 1 BEDROOM UNITS, 50 CUBIC FEET FOR EFFICIENCIES. SEE CLOSET AREA, SHOWN IN LIGHT GREY.
 3. COAT CLOSET
(1) 2'-0" DEEP X 2'-0" DEEP BY 8'-0" HIGH.
 4. GENERAL STORAGE
TYPICAL FINISHED CEILING HEIGHT IS 8'-0". EACH LINEAR FOOT OF GENERAL STORAGE CLOSET YIELDS 16 CUBIC FEET OF STORAGE. TOTAL CUBIC FEET HAS BEEN INDICATED ON EACH UNIT AS MEETING OR EXCEEDING 100 CUBIC FEET FOR 1 BEDROOM UNITS, 50 CUBIC FEET FOR EFFICIENCIES. SEE CLOSET AREA, SHOWN IN LIGHT GREY.
 5. SURFACE MOUNTED MEDICINE CABINET
REFER TO SPECIFICATIONS
 6. NOT USED
 7. NOT USED
 8. 24" TOWEL BAR
 9. 18" TOWEL BAR
 10. TAYMOR 01-9404 TOWEL RING
 11. TOILET PAPER HOLDER
- = WALL WHERE SHOWER CONTROLS & SHOWER HEAD MUST BE LOCATED
- NOTE: VANITY CABINET WIDTHS ARE LISTED - VANITY TOPS MUST BE 1" WIDER TO OVERHANG 1/2" EACH SIDE

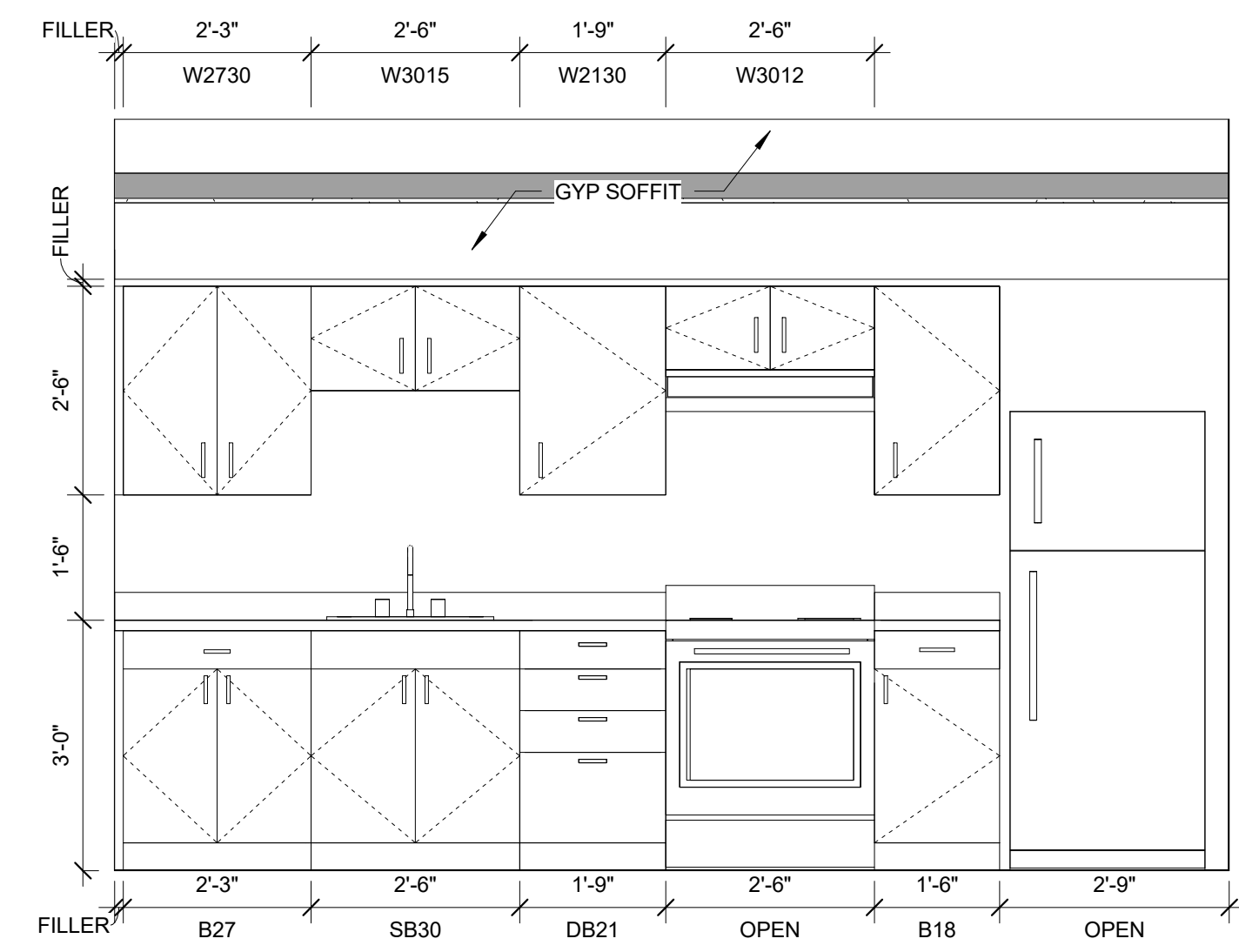


1 | UNIT 515
1/4" = 1'-0"

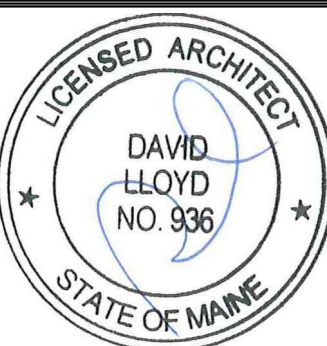
ONE BEDROOM - ANSI 117.1 TYPE B UNIT
GENERAL STORAGE = 136.56 CU. FT



4 | UNIT 515 KITCHEN ELEVATION
1/2" = 1'-0"



5 | UNIT 516 KITCHEN ELEVATION
1/2" = 1'-0"



Prepared For:
MOTHERHOUSE LLC

Consultant:
ARCHETYPE architects
48 Union Wharf Portland, Maine 04101
(207) 772-0022 ARCHETYPE@ARCHETYPEPA.COM

Project:
MOTHERHOUSE SENIOR HOUSING
605 STEVENS AVENUE
PORTLAND, MAINE 04103

Date: 15 FEB 2016
Scale: As indicated
UNIT PLANS (515, 516, 518)

A6.28