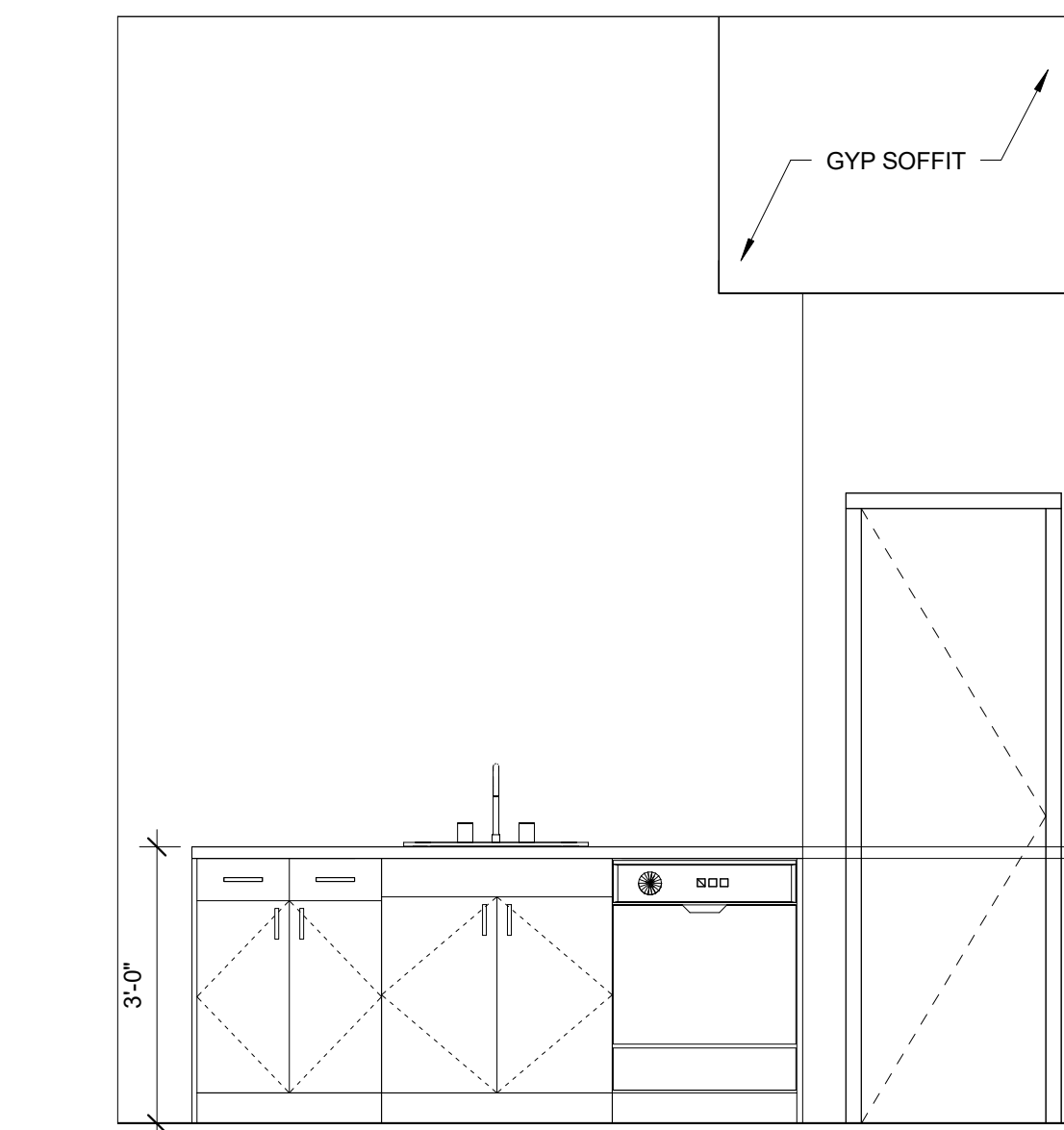
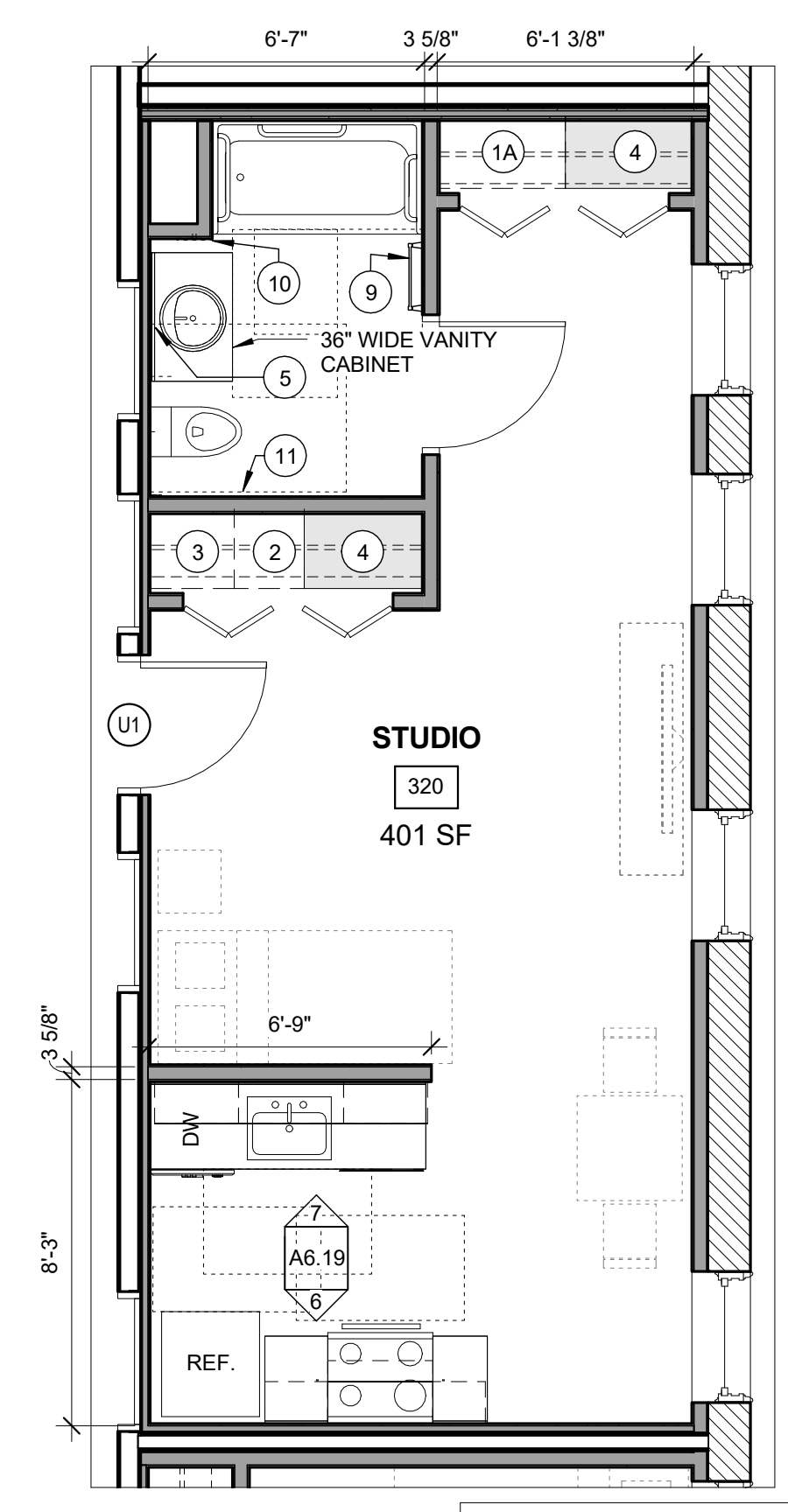


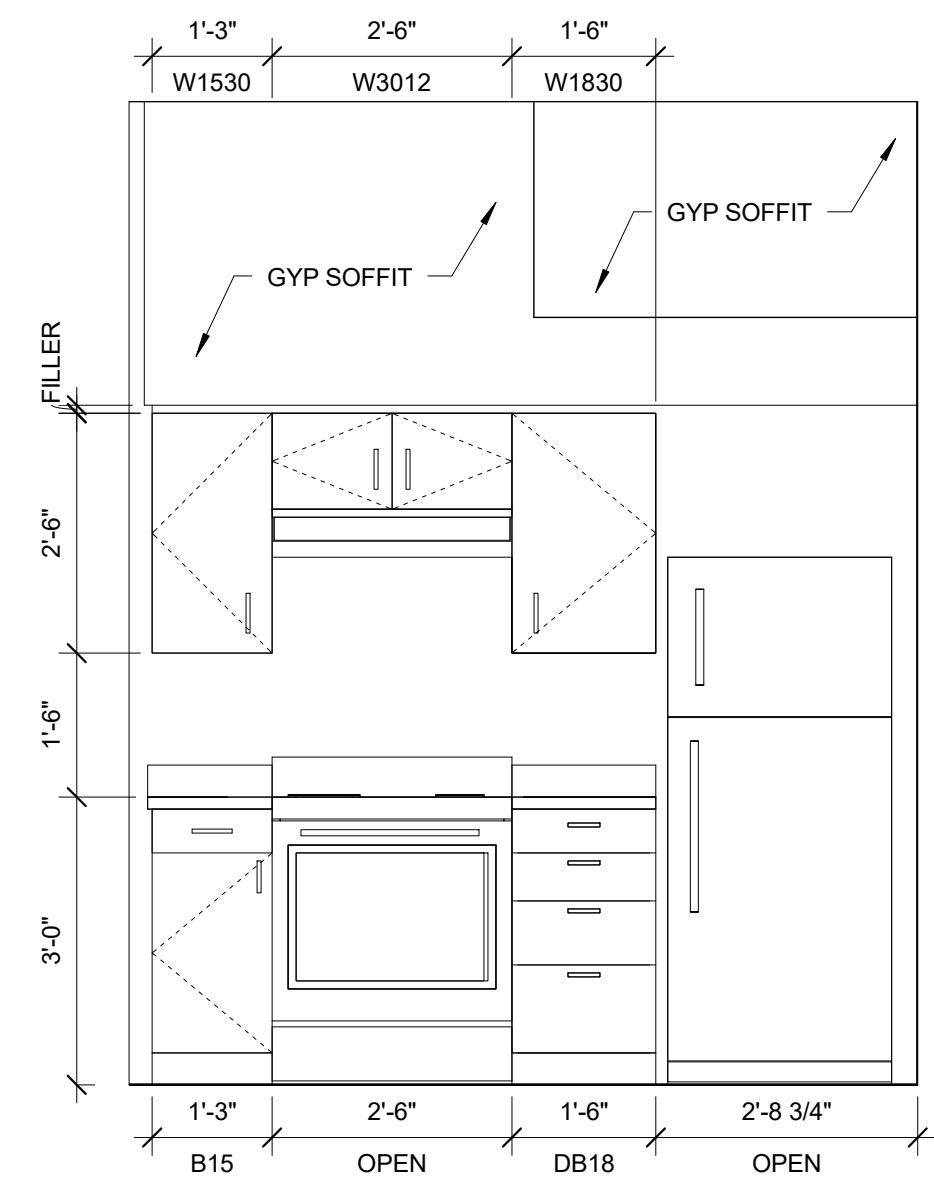
3 | UNIT 321
ONE BEDROOM - ANSI 117.1 TYPE B UNIT
GENERAL STORAGE = 128.96 CU. FT
1/4" = 1'-0"



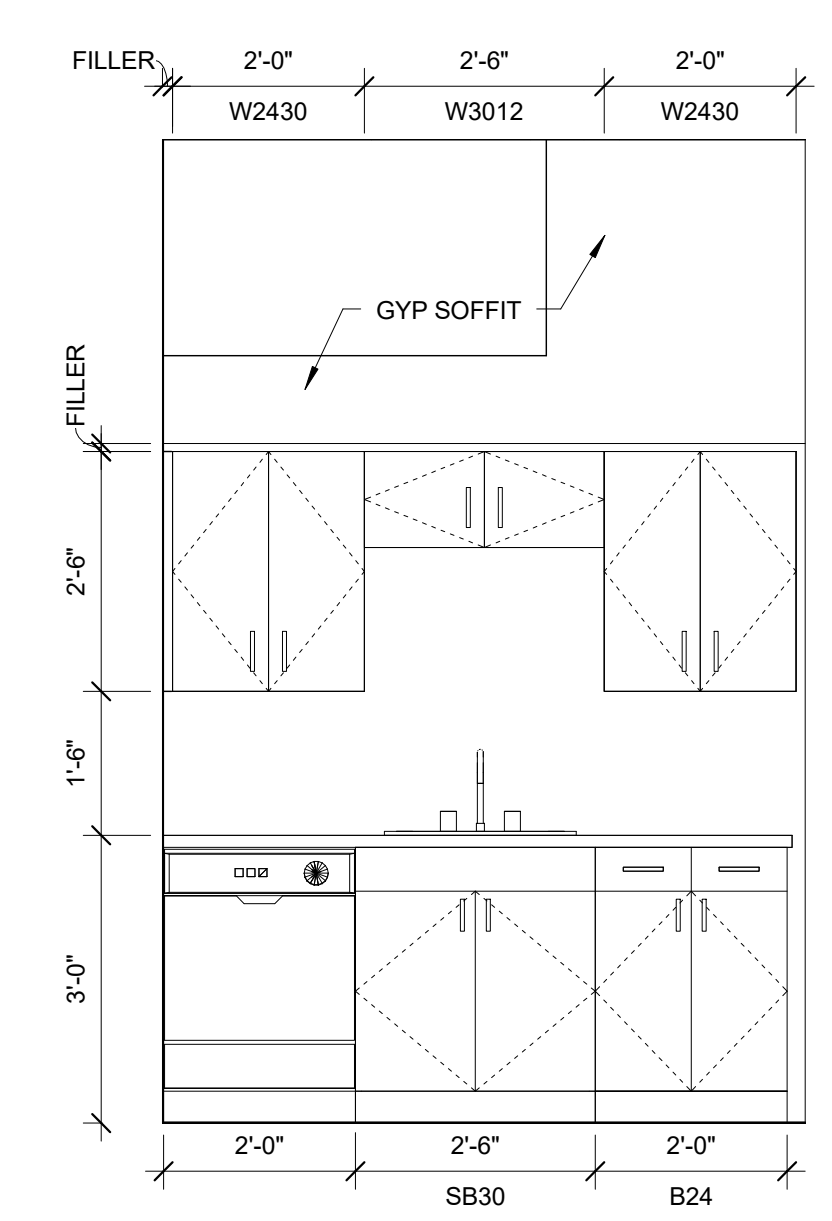
5 | UNIT 321 KITCHEN ELEVATION
1/2" = 1'-0"



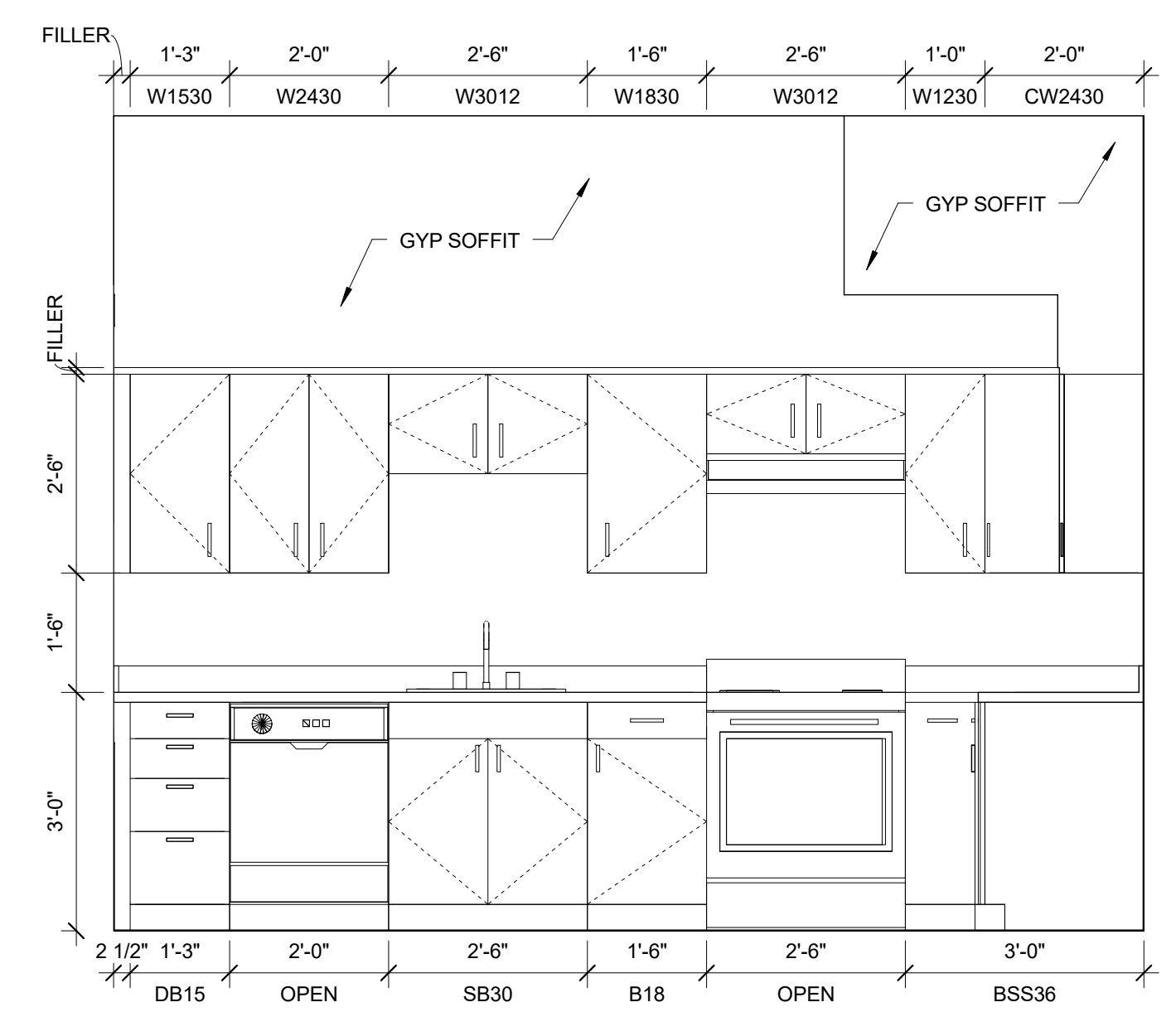
2 | UNIT 320
STUDIO
320
401 SF
EFFICIENCY - ANSI 117.1 TYPE B UNIT
GENERAL STORAGE = 84.32 CU. FT
1/4" = 1'-0"



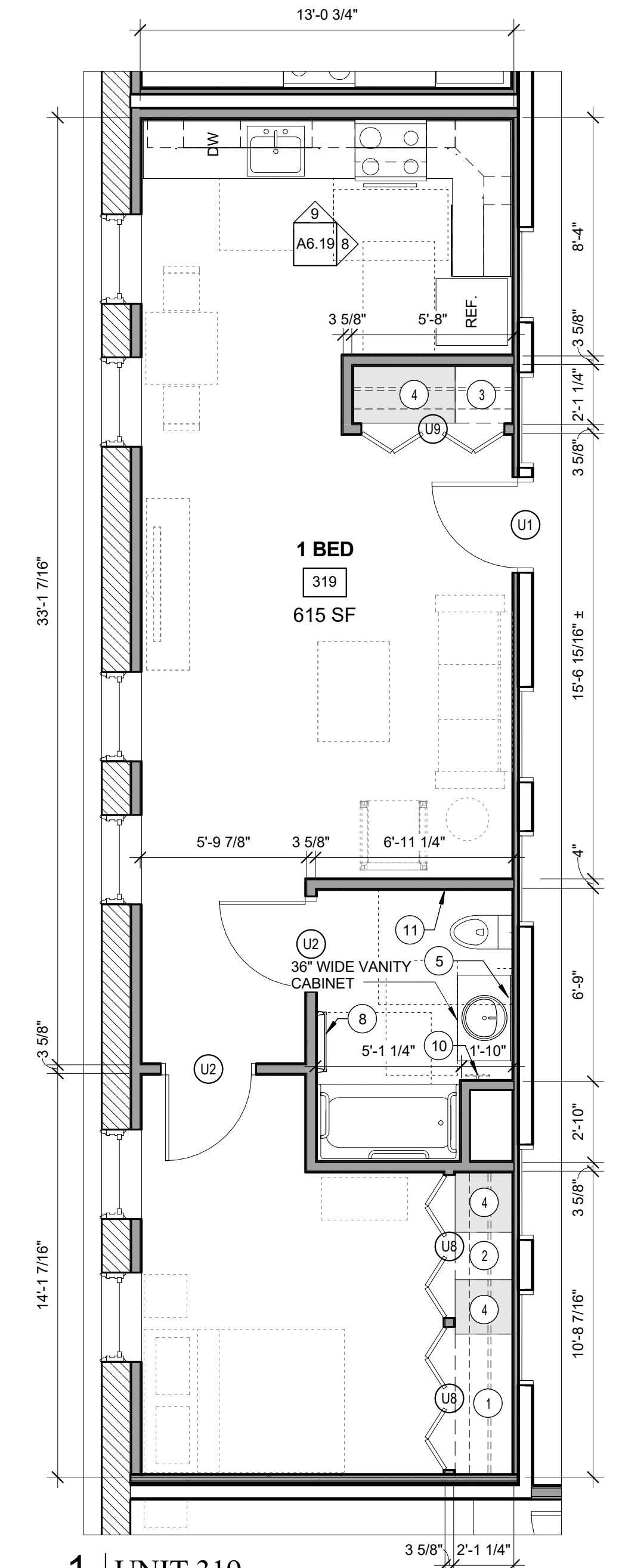
6 | UNIT 320 KITCHEN ELEVATION
1/2" = 1'-0"



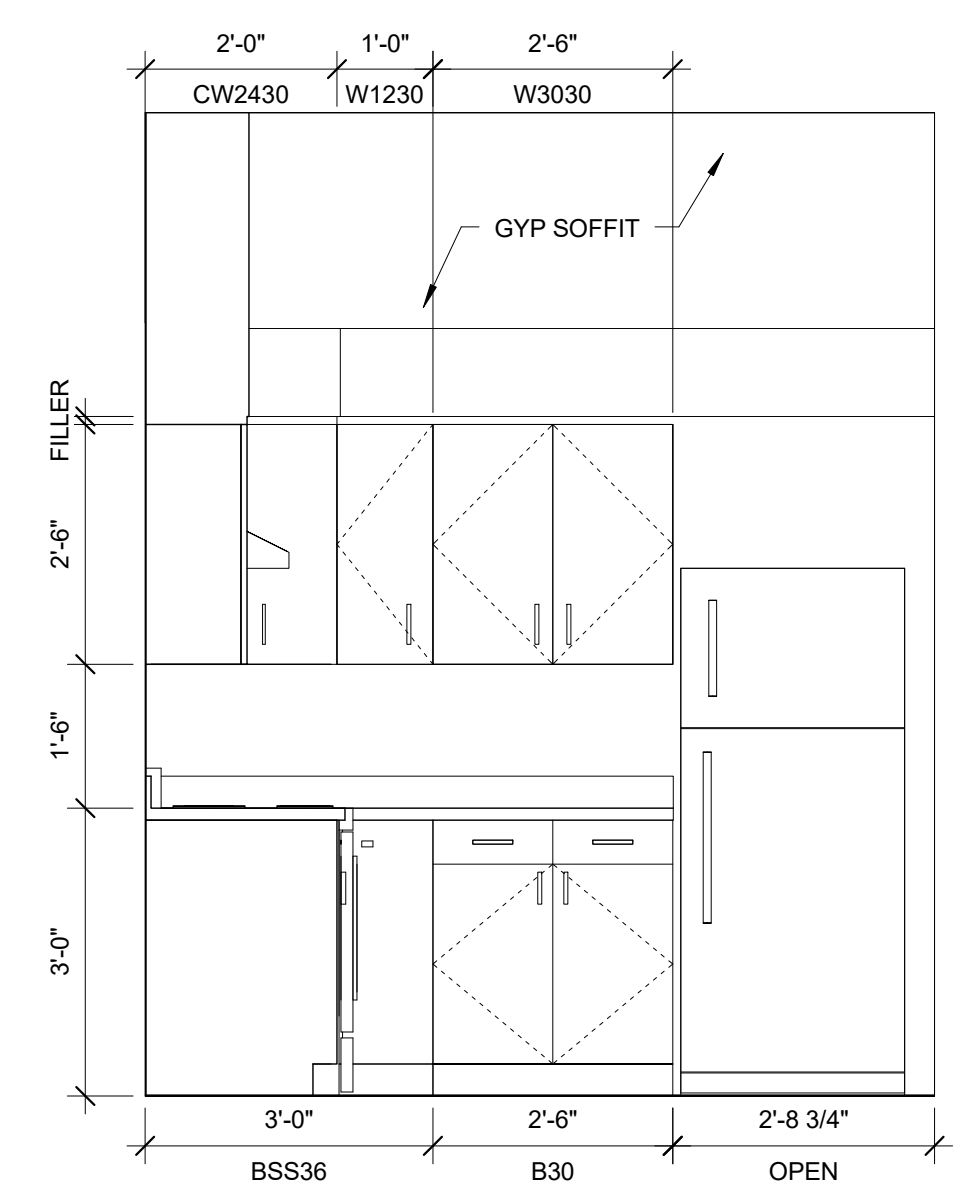
7 | UNIT 320 KITCHEN ELEVATION
1/2" = 1'-0"



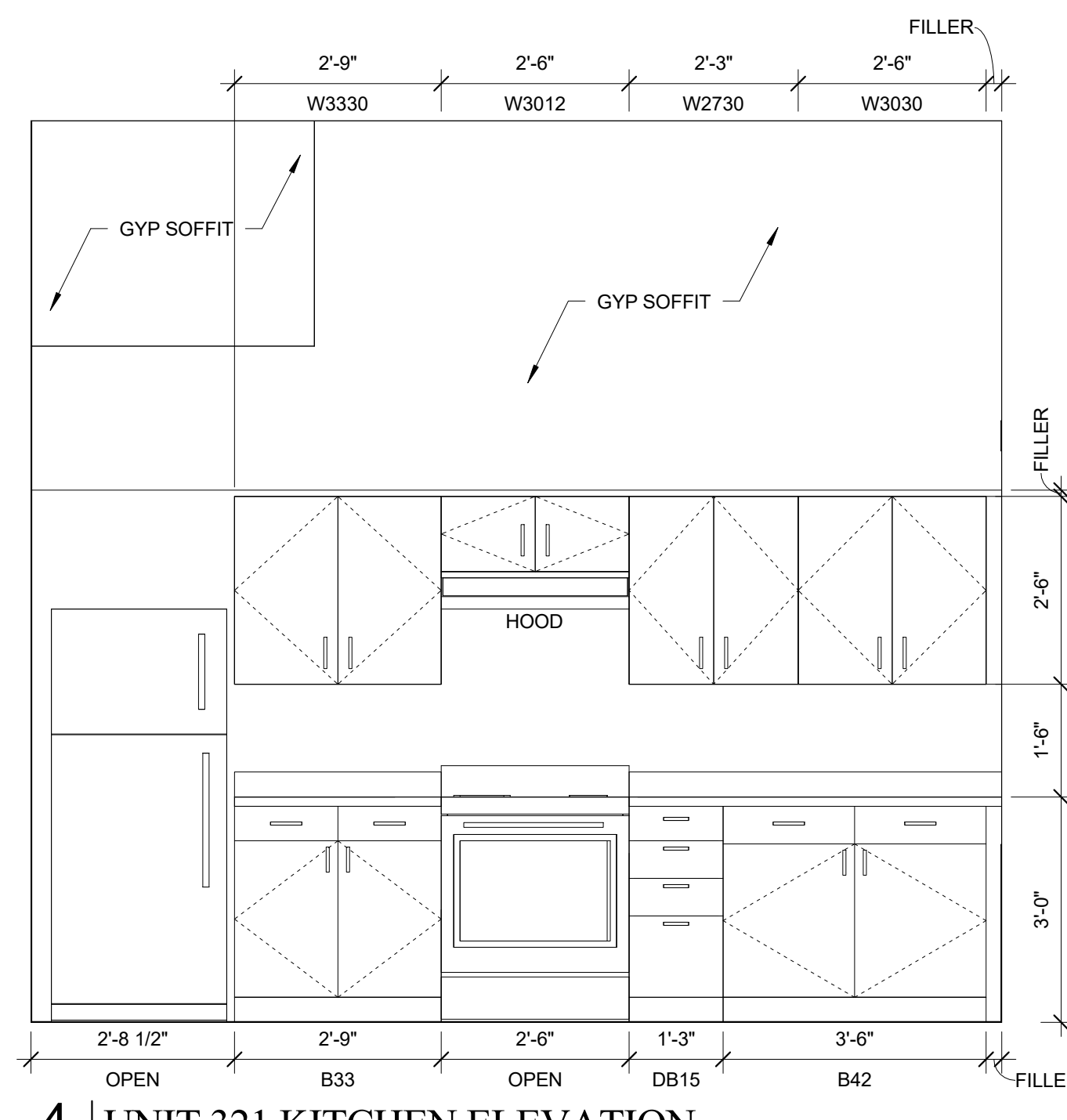
9 | UNIT 319 KITCHEN ELEVATION
1/2" = 1'-0"



1 | UNIT 319
ONE BEDROOM - ANSI 117.1 TYPE B UNIT
GENERAL STORAGE = 120.64 CU. FT
1/4" = 1'-0"



8 | UNIT 319 KITCHEN ELEVATION
1/2" = 1'-0"



4 | UNIT 321 KITCHEN ELEVATION
1/2" = 1'-0"

TYPICAL UNIT STORAGE & BATHROOM ACCESSORIES LEGEND

- TYPICAL UNIT BEDROOM CLOSET
2'-0" DEEP X 5'-0" WIDE BY 8'-0" HIGH
- EFFICIENCY UNIT BEDROOM CLOSET
2'-0" DEEP X 3'-0" WIDE BY 8'-0" HIGH
- LINEN STORAGE CLOSET
TYPE B UNITS = 1'-6" DEEP X 1'-8" (MIN) WIDE.
ACCESSIBLE UNITS = 1'-3" DEEP X 1'-8" (MIN) WIDE.
PROVIDE WITH (4) SHELVES, SPACED AS SHOWN ON
DTL 1/A6.30. YIELDS 10 SF MINIMUM OF SHELVING AREA.
- COAT CLOSET
(1) 2'-0" DEEP X 2'-0" DEEP BY 8'-0" HIGH.
- GENERAL STORAGE
TYPICAL FINISHED CEILING HEIGHT IS 8'-0". EACH LINEAR
FOOT OF GENERAL STORAGE CLOSET YIELDS 16 CUBIC
FEET OF STORAGE. TOTAL CUBIC FEET HAS BEEN
INDICATED ON EACH UNIT AS MEETING OR EXCEEDING
100 CUBIC FEET FOR 1 BEDROOM UNITS, 50 CUBIC FEET
FOR EFFICIENCIES. SEE CLOSET AREA, SHOWN IN LIGHT
GREY.
- SURFACE MOUNTED MEDICINE CABINET
REFER TO SPECIFICATIONS
- NOT USED
- NOT USED
- 24" TOWEL BAR
- 18" TOWEL BAR
- TAYMOR 01-9404 TOWEL RING
- TOILET PAPER HOLDER
= WALL WHERE SHOWER CONTROLS &
SHOWER HEAD MUST BE LOCATED

NOTE: VANITY CABINET WIDTHS ARE LISTED - VANITY
TOPS MUST BE 1" WIDER TO OVERHANG 1/2" EACH SIDE