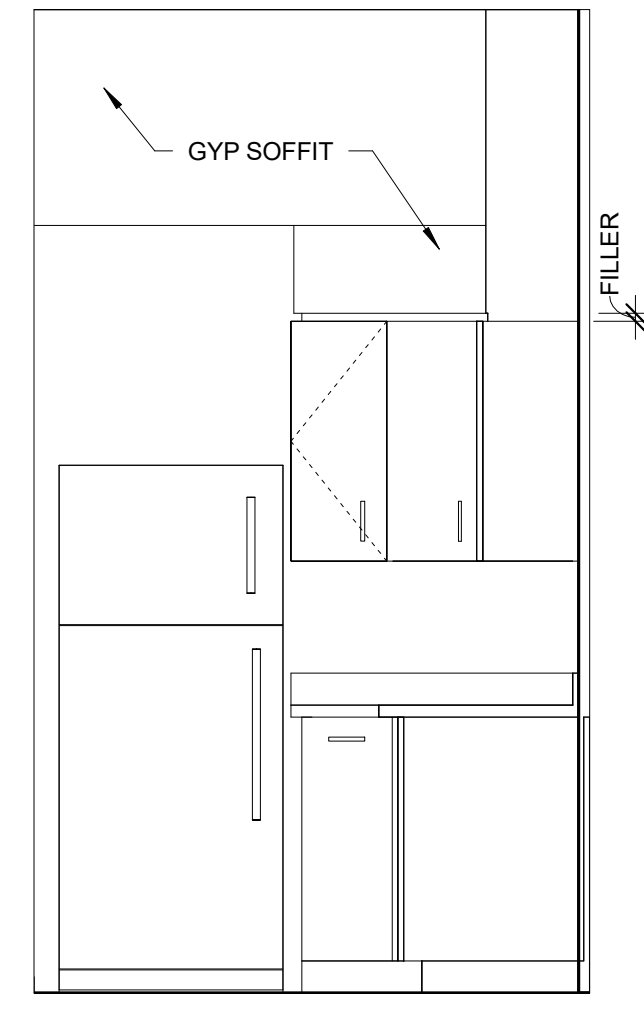
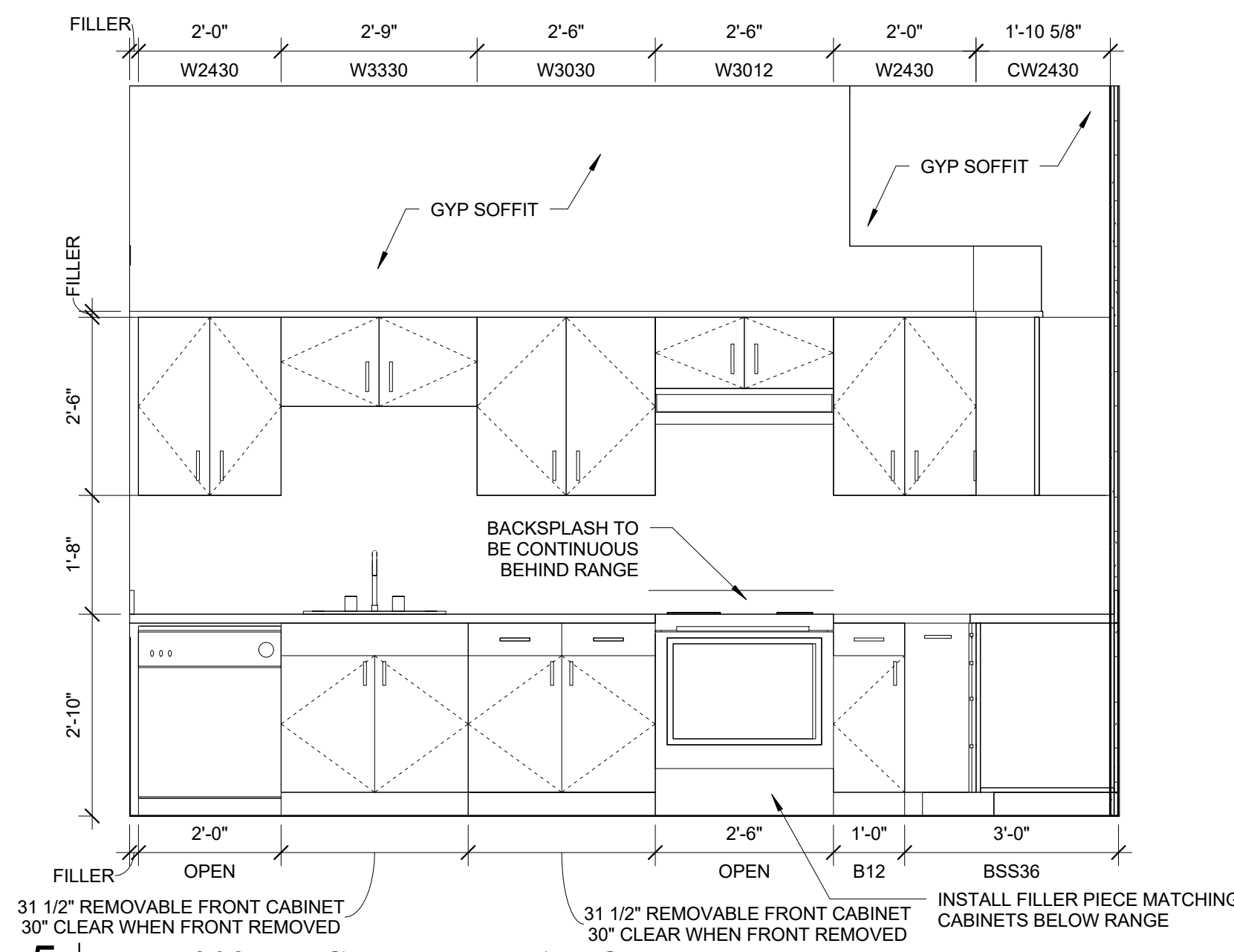


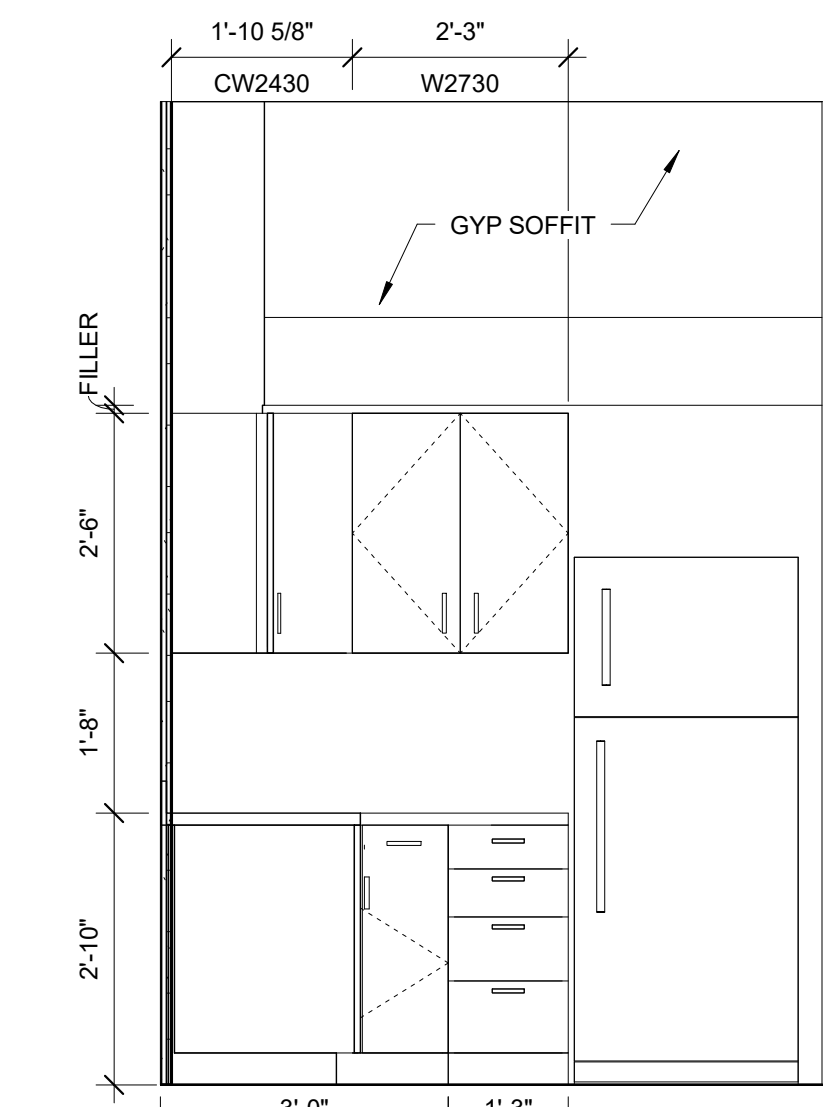
7 | UNIT 315 KITCHEN ELEVATION
1/2" = 1'-0"



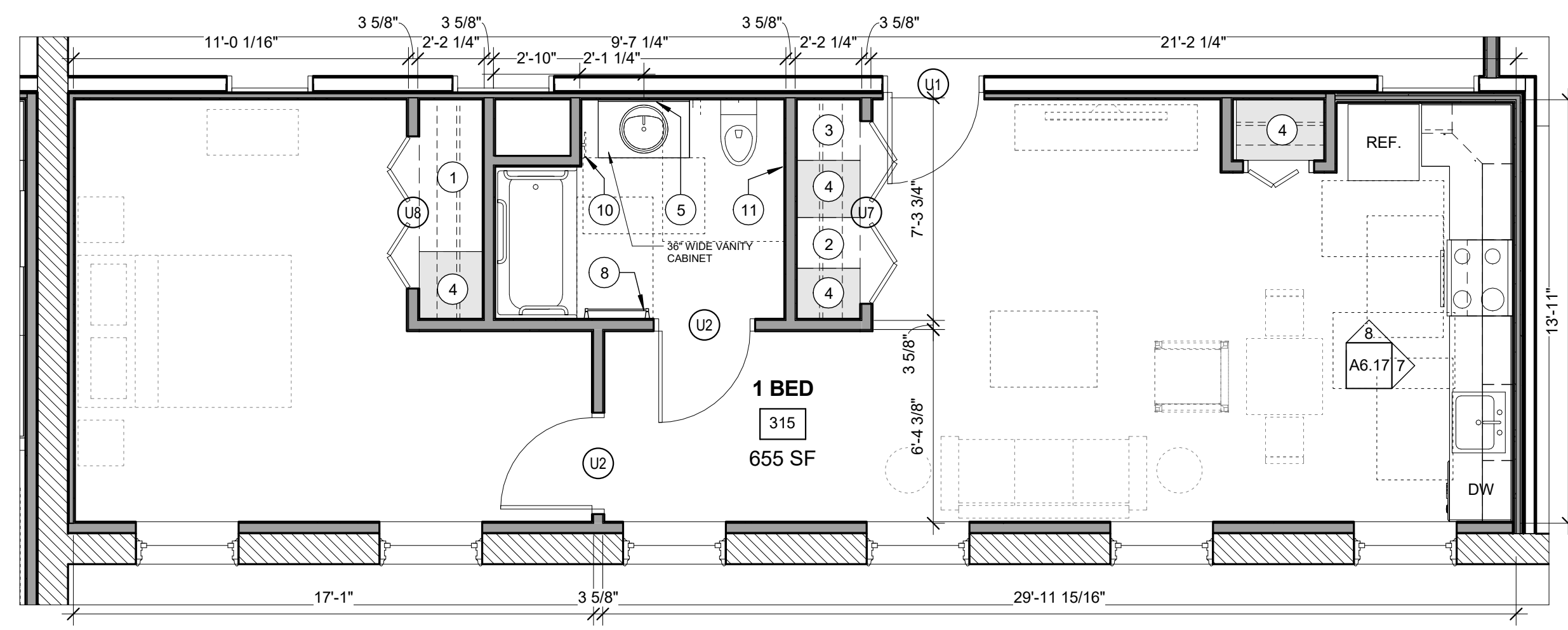
8 | UNIT 315 KITCHEN ELEVATION
1/2" = 1'-0"



5 | UNIT 309 KITCHEN ELEVATION
1/2" = 1'-0"

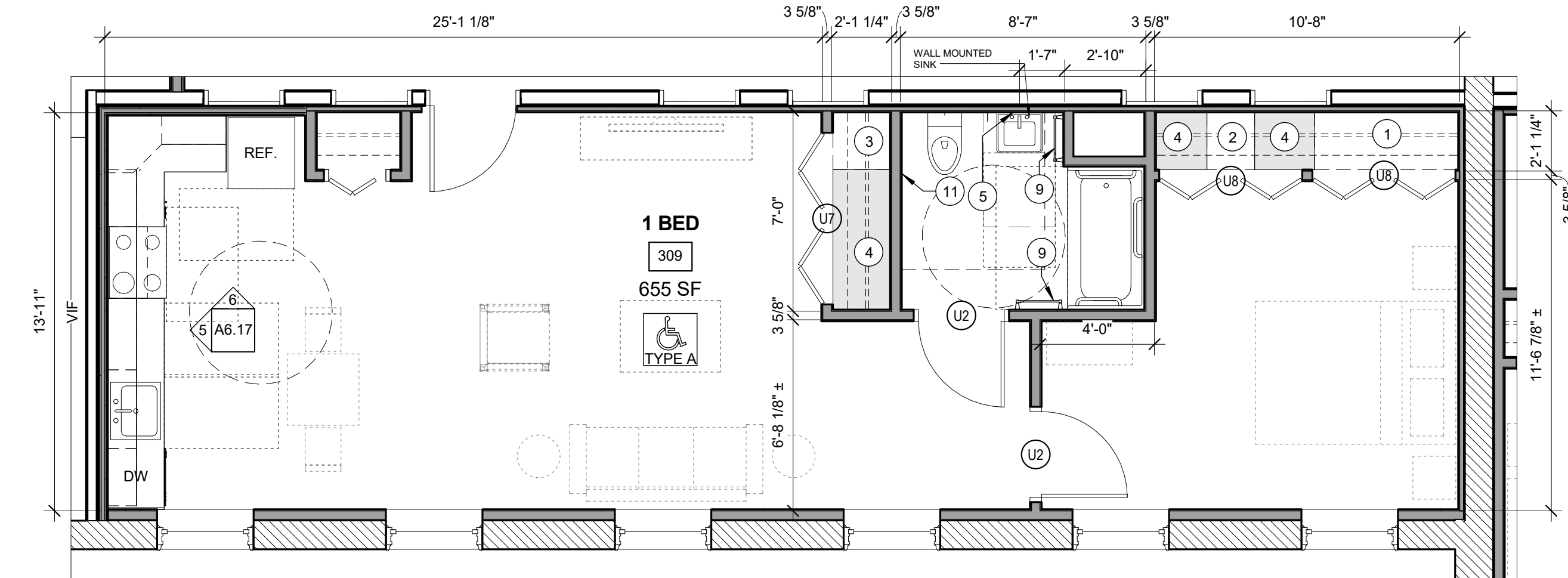


6 | UNIT 309 KITCHEN ELEVATION
1/2" = 1'-0"



3 | UNIT 315
1/4" = 1'-0"

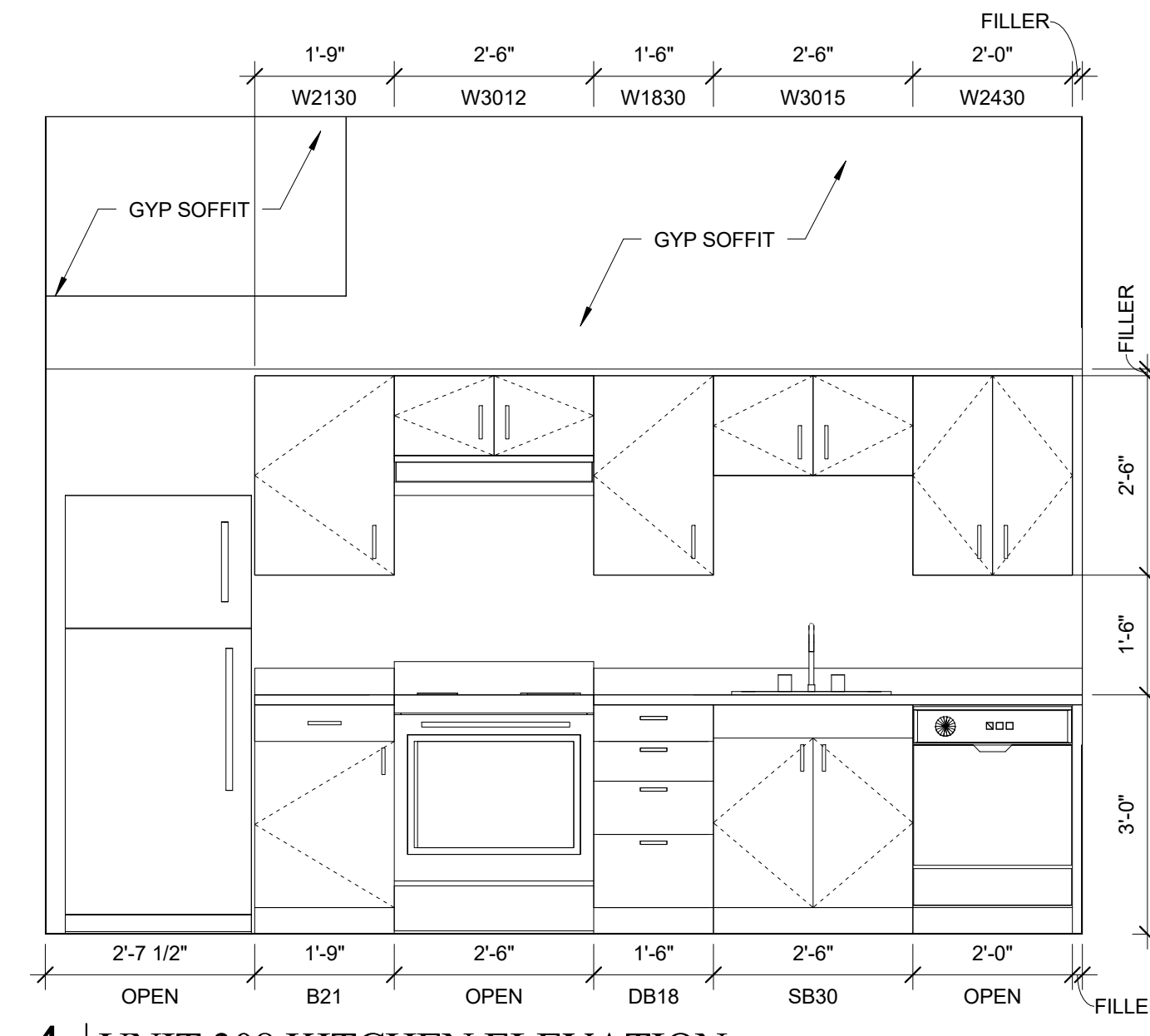
ONE BEDROOM - ANSI 117.1 TYPE B UNIT
GENERAL STORAGE = 143.84 CU. FT.



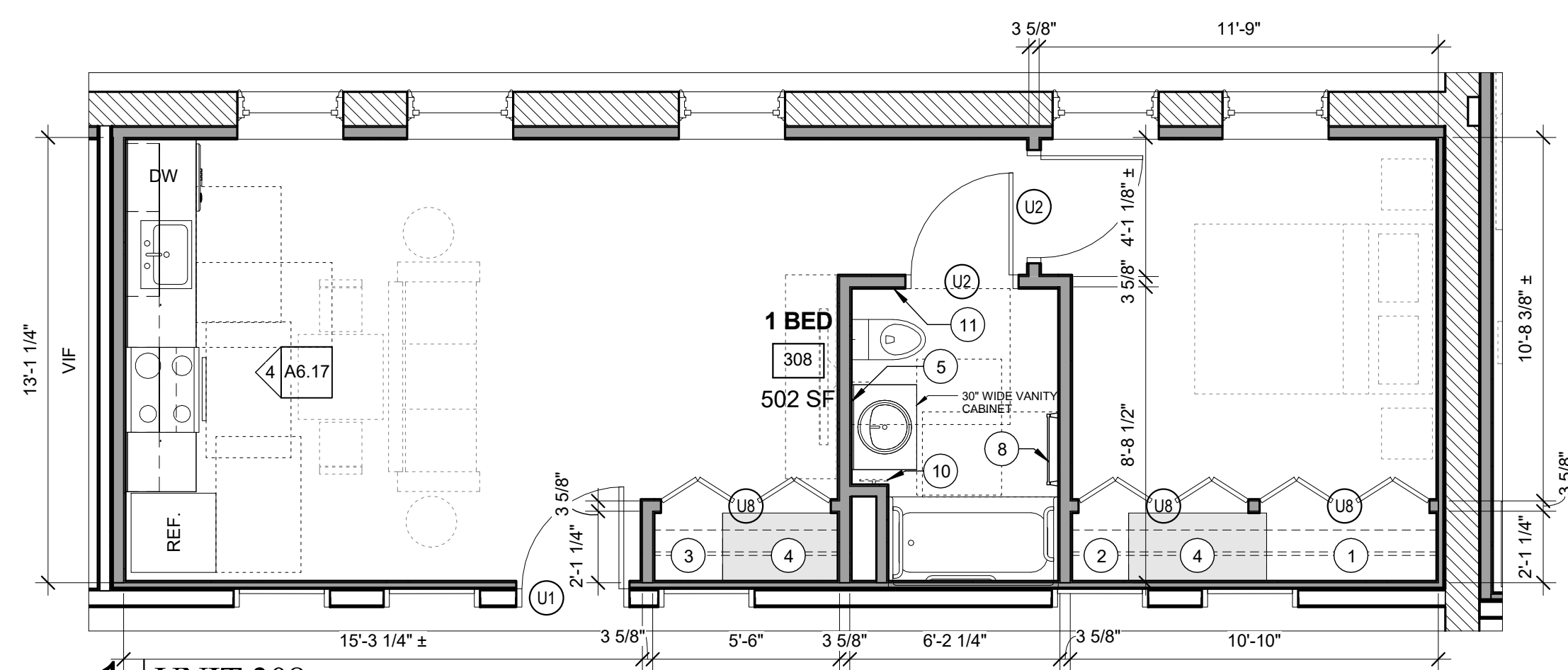
2 | UNIT 309
1/4" = 1'-0"

ONE BEDROOM - ADA TYPE A UNIT
GENERAL STORAGE = 140.6 CU. FT.

- TYPICAL UNIT STORAGE & BATHROOM ACCESSORIES LEGEND**
- TYPICAL UNIT BEDROOM CLOSET
2'-0" DEEP x 5'-0" WIDE BY 8'-0" HIGH
 - 1A. EFFICIENCY UNIT BEDROOM CLOSET
2'-0" DEEP x 3'-0" WIDE BY 8'-0" HIGH
 - LINEN STORAGE CLOSET
TYPE B UNITS = 1'-6" DEEP x 1'-8" (MIN) WIDE.
ACCESSIBLE UNITS = 1'-8" DEEP x 1'-8" (MIN) WIDE.
PROVIDE WITH (4) SHELVES SPACED AS SHOWN ON DTL 1/A6.30. YIELDS 10 SF MINIMUM OF SHELVING AREA.
 - COAT CLOSET
(1) 2'-0" DEEP x 2'-0" DEEP BY 8'-0" HIGH.
 - GENERAL STORAGE
TYPICAL FINISHED CEILING HEIGHT IS 8'-0". EACH LINEAR FOOT OF GENERAL STORAGE CLOSET YIELDS 16 CUBIC FEET OF STORAGE. TOTAL CUBIC FEET HAS BEEN INDICATED ON EACH UNIT AS MEETING OR EXCEEDING 100 CUBIC FEET FOR 1 BEDROOM UNITS, 50 CUBIC FEET FOR EFFICIENCIES. SEE CLOSET AREA SHOWN IN LIGHT GREY.
 - SURFACE MOUNTED MEDICINE CABINET
REFER TO SPECIFICATIONS
 - NOT USED
 - NOT USED
 - 24" TOWEL BAR
 - 18" TOWEL BAR
 - TAYMOR 01-9404 TOWEL RING
 - TOILET PAPER HOLDER
- = WALL WHERE SHOWER CONTROLS & SHOWER HEAD MUST BE LOCATED
- NOTE: VANITY CABINET WIDTHS ARE LISTED - VANITY TOPS MUST BE 1" WIDER TO OVERHANG 1/2" EACH SIDE



4 | UNIT 308 KITCHEN ELEVATION
1/2" = 1'-0"



1 | UNIT 308
1/4" = 1'-0"

ONE BEDROOM - ANSI 117.1 TYPE B UNIT
GENERAL STORAGE = 119.3 CU. FT.