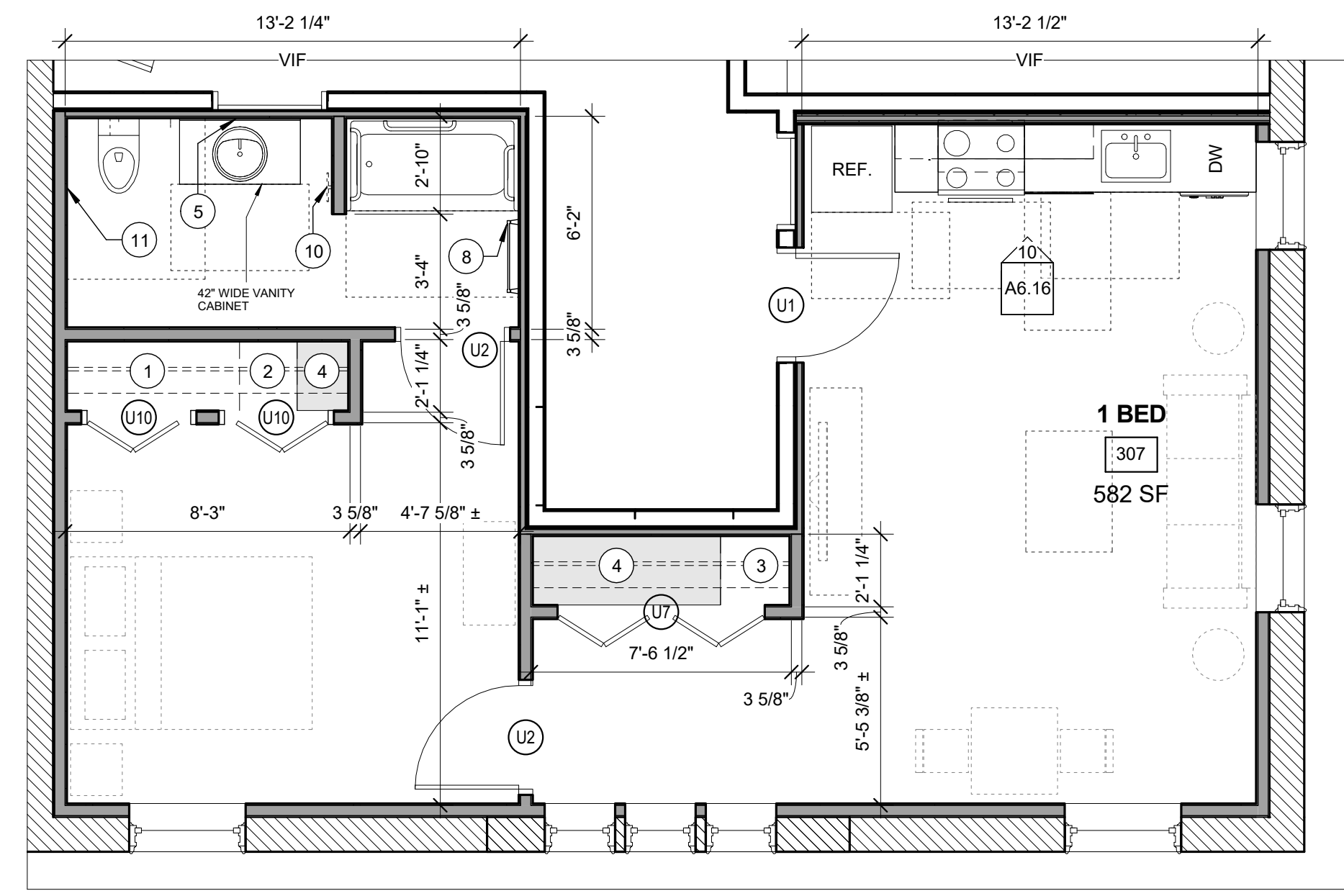


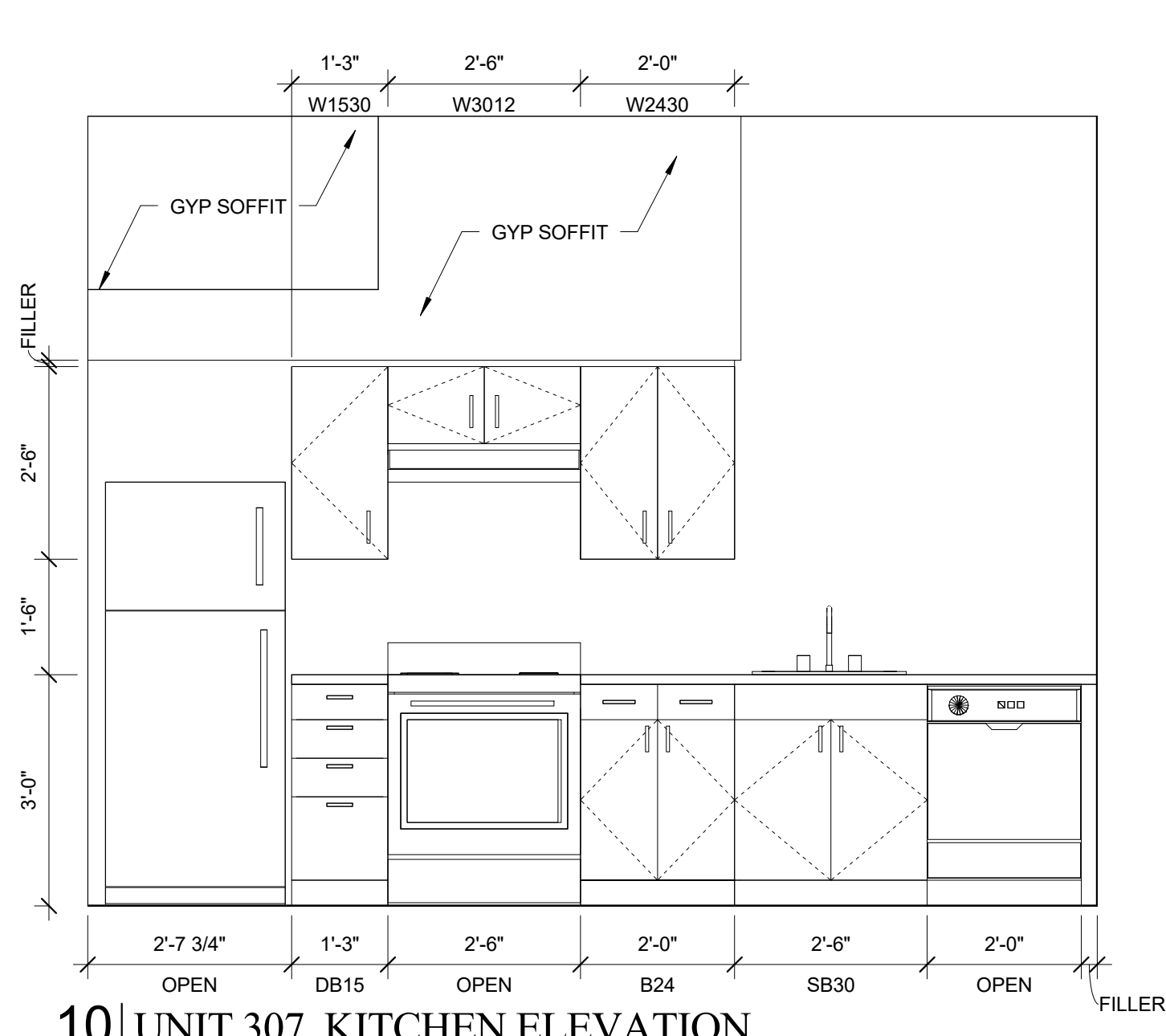
**3 UNIT 306**  
1/4" = 1'-0"

ONE BEDROOM - ANSI 117.1 TYPE B UNIT  
GENERAL STORAGE = 147.5 CU. FT.



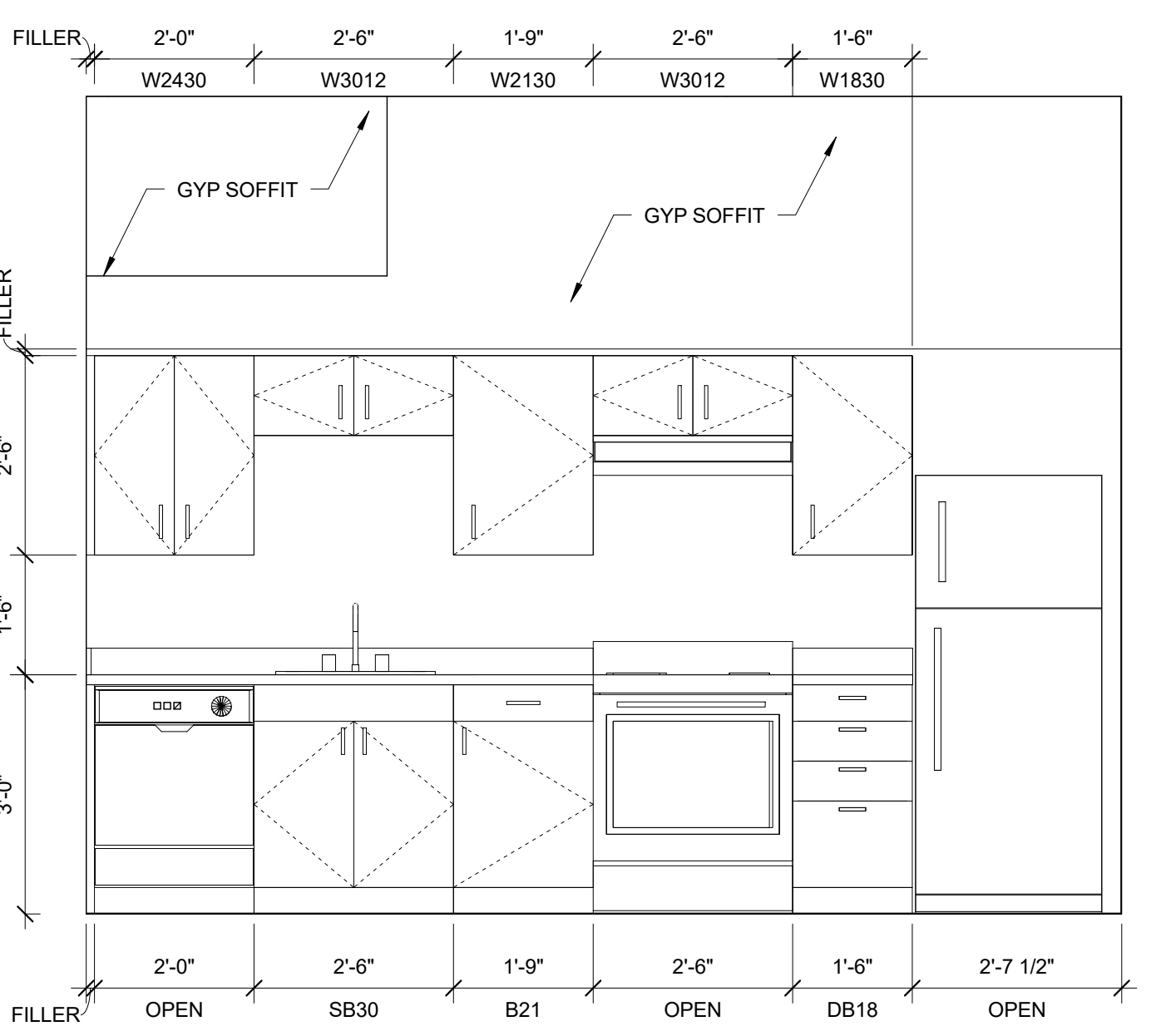
**9 UNIT 307**  
1/4" = 1'-0"

ONE BEDROOM - ANSI 117.1 TYPE B UNIT  
GENERAL STORAGE = 110.6 CU. FT.

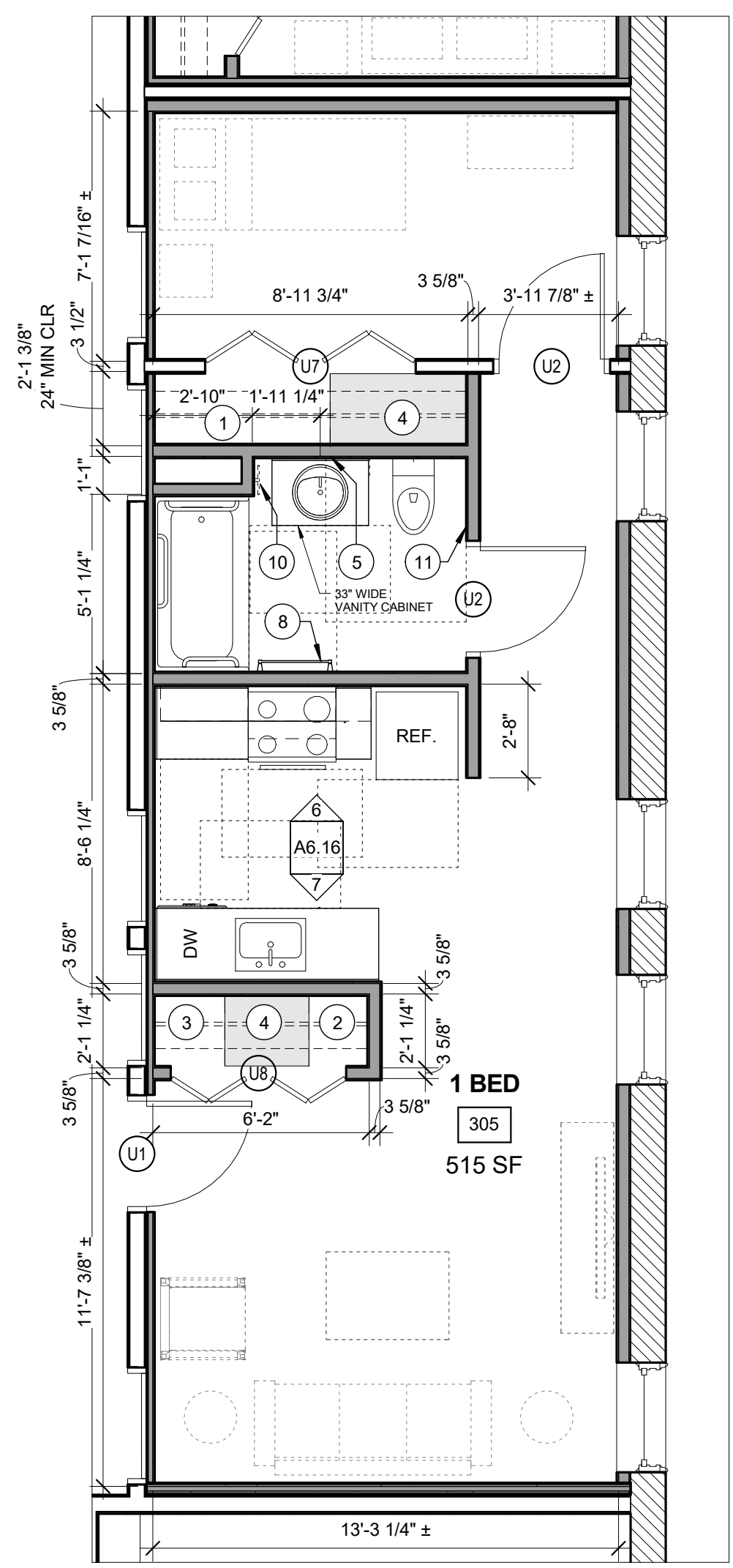


**10 UNIT 307 KITCHEN ELEVATION**  
1/2" = 1'-0"

- TYPICAL UNIT STORAGE & BATHROOM ACCESSORIES  
LEGEND**
- TYPICAL UNIT BEDROOM CLOSET  
2'-0" DEEP X 5'-0" WIDE BY 8'-0" HIGH
  - EFFICIENCY UNIT BEDROOM CLOSET  
2'-0" DEEP X 3'-0" WIDE BY 8'-0" HIGH
  - LINEN STORAGE CLOSET  
TYPE B UNITS = 1'-6" DEEP X 1'-8" (MIN) WIDE.  
ACCESSIBLE UNITS = 1'-3" DEEP X 1'-8" (MIN) WIDE.  
PROVIDE WITH (4) SHELVES SPACED AS SHOWN ON  
DTL 1/A6.30. YIELDS 10 SF MINIMUM OF SHELVING AREA.
  - COAT CLOSET  
(1) 2'-0" DEEP X 2'-0" DEEP BY 8'-0" HIGH.
  - GENERAL STORAGE  
TYPICAL FINISHED CEILING HEIGHT IS 8'-0". EACH LINEAR  
FOOT OF GENERAL STORAGE CLOSET YIELDS 16 CUBIC  
FEET OF STORAGE. TOTAL CUBIC FEET HAS BEEN  
INDICATED ON EACH UNIT AS MEETING OR EXCEEDING  
100 CUBIC FEET FOR 1 BEDROOM UNITS, 50 CUBIC FEET  
FOR EFFICIENCIES. SEE CLOSET AREA, SHOWN IN LIGHT  
GREY.
  - SURFACE MOUNTED MEDICINE CABINET  
REFER TO SPECIFICATIONS
  - NOT USED
  - NOT USED
  - 24" TOWEL BAR
  - 18" TOWEL BAR
  - TAYMOR 01-9404 TOWEL RING
  - TOILET PAPER HOLDER
- = WALL WHERE SHOWER CONTROLS &  
SHOWER HEAD MUST BE LOCATED
- NOTE: VANITY CABINET WIDTHS ARE LISTED - VANITY  
TOPS MUST BE 1" WIDER TO OVERHANG 1/2" EACH SIDE

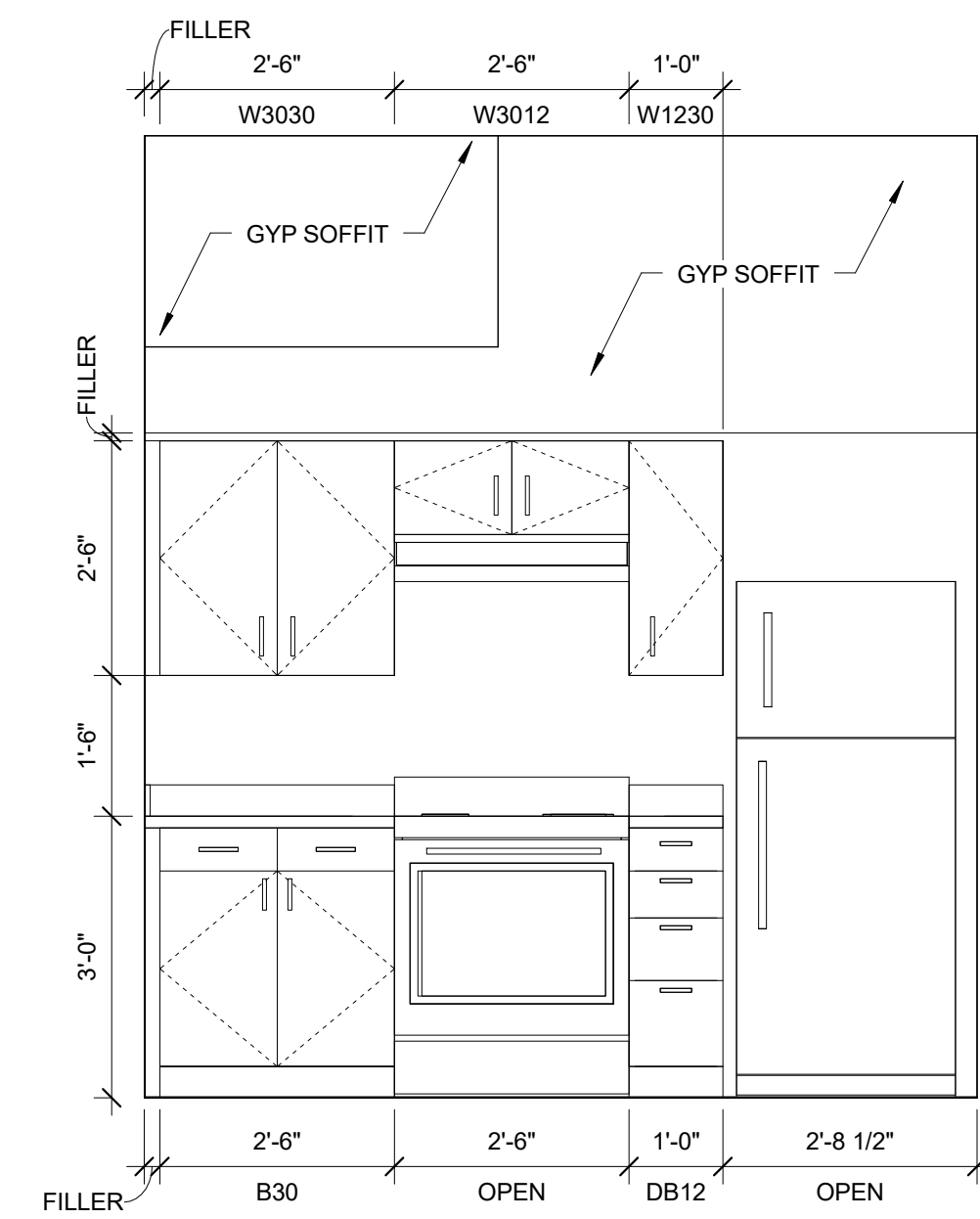


**8 UNIT 306 KITCHEN ELEVATION**  
1/2" = 1'-0"

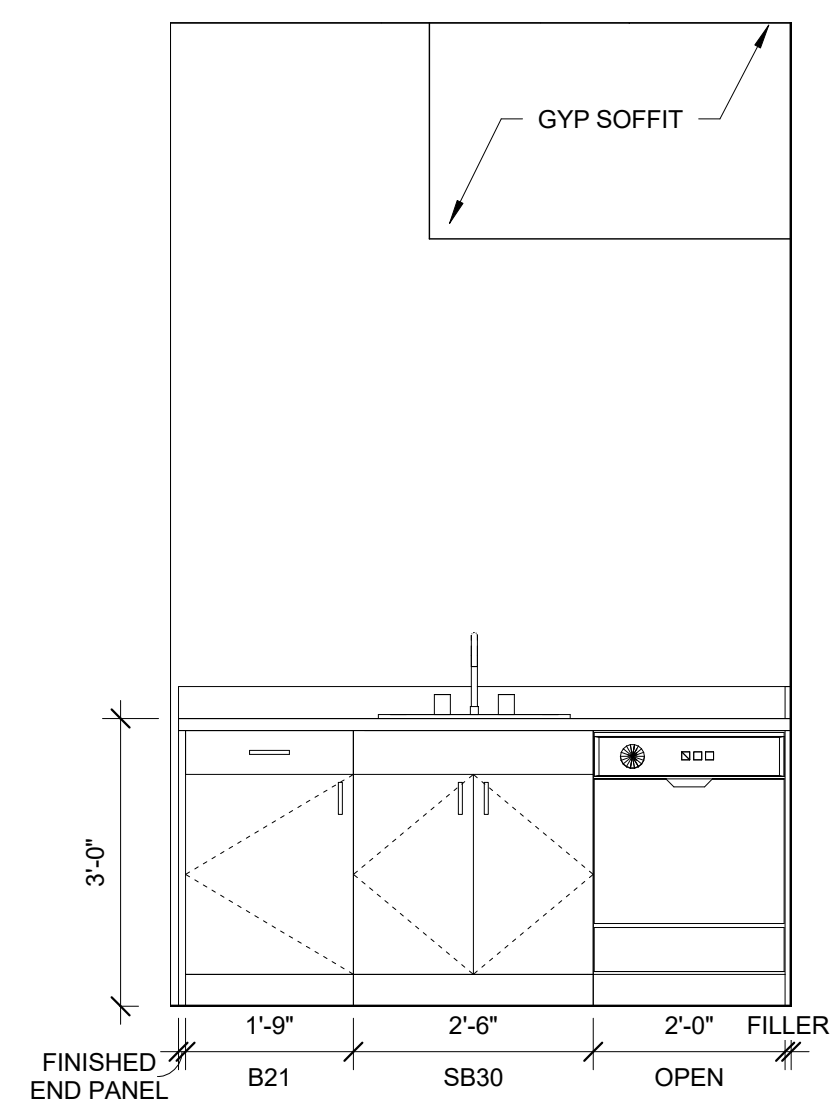


**2 UNIT 305**  
1/4" = 1'-0"

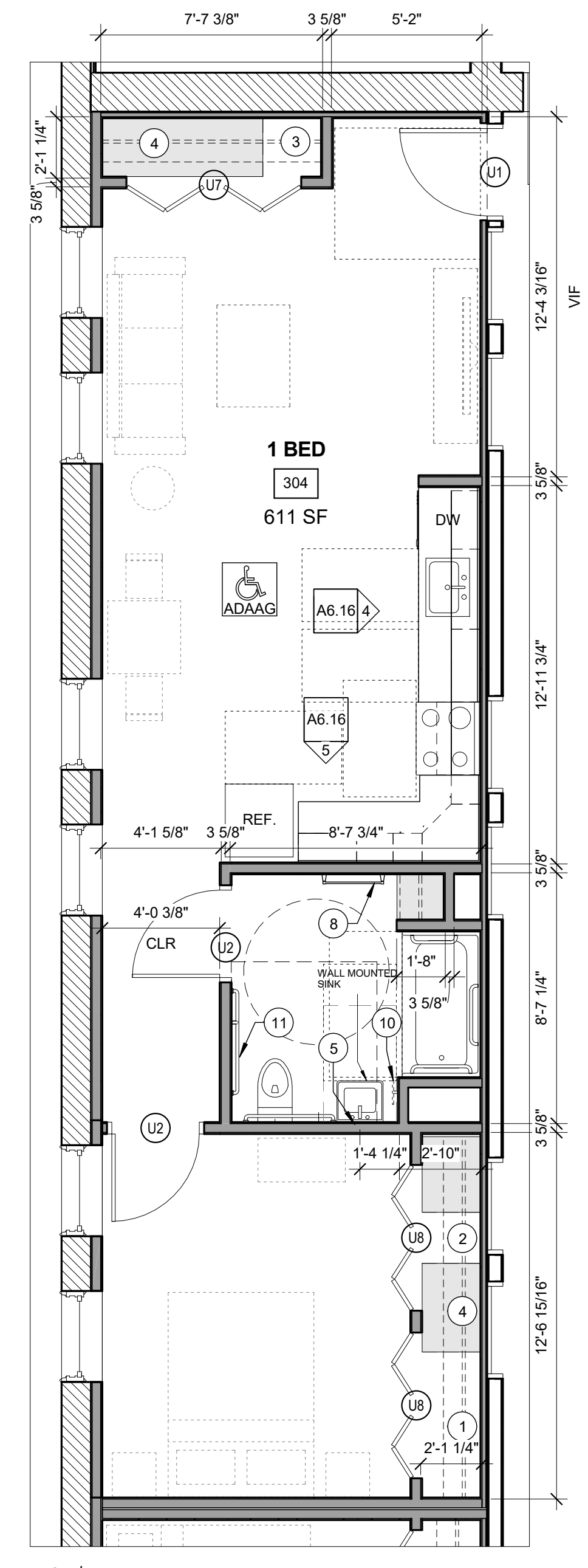
ONE BEDROOM - ANSI 117.1 TYPE B UNIT  
GENERAL STORAGE = 100.3 CU. FT.



**6 UNIT 305 KITCHEN ELEVATION**  
1/2" = 1'-0"

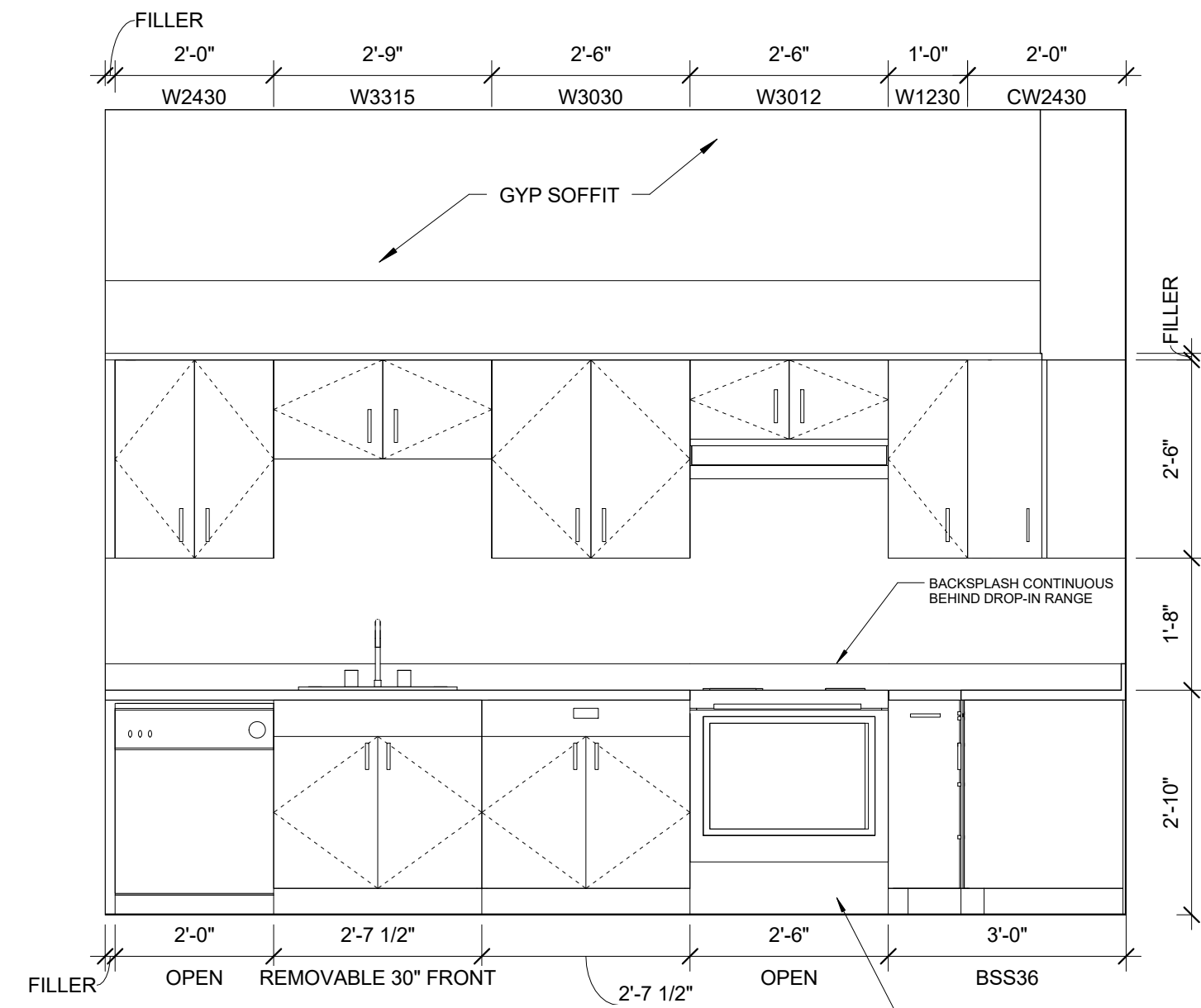


**7 UNIT 305 KITCHEN ELEVATION**  
1/2" = 1'-0"

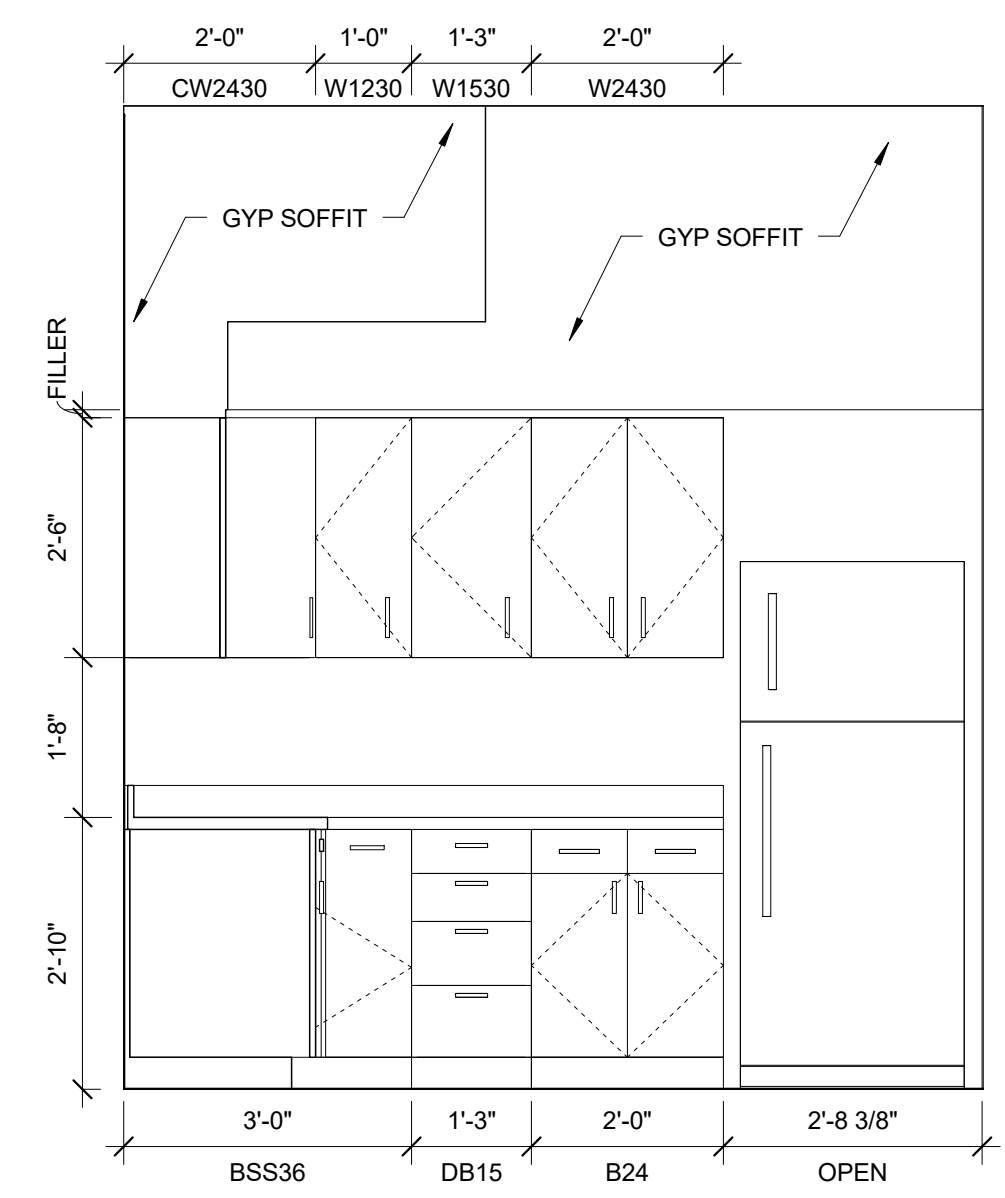


**1 UNIT 304**  
1/4" = 1'-0"

ONE BEDROOM - ADAAG  
GENERAL STORAGE = 196.9 CU. FT.



**4 UNIT 304 KITCHEN ELEVATION**  
1/2" = 1'-0"



**5 UNIT 304 KITCHEN ELEVATION**  
1/2" = 1'-0"