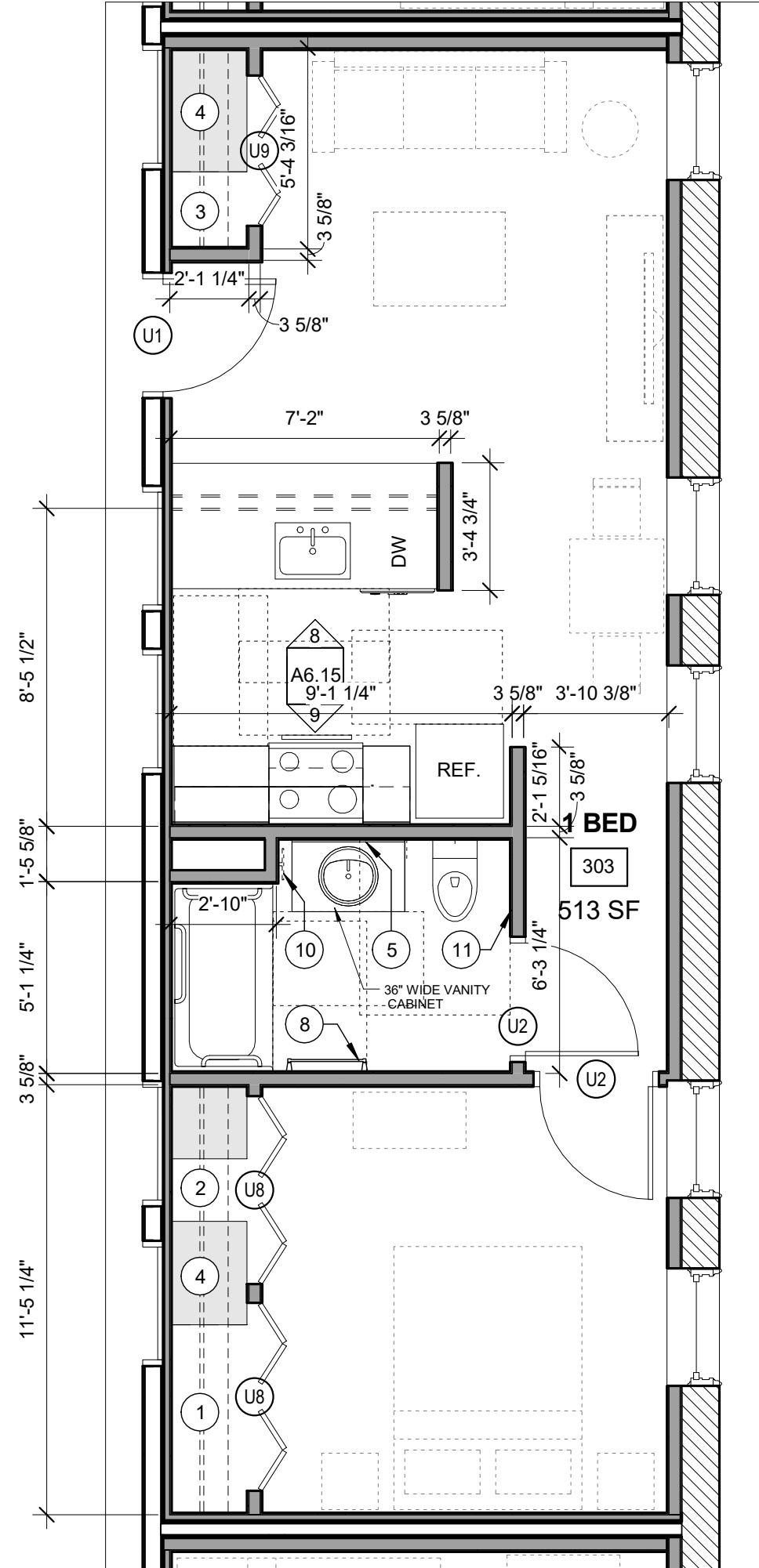


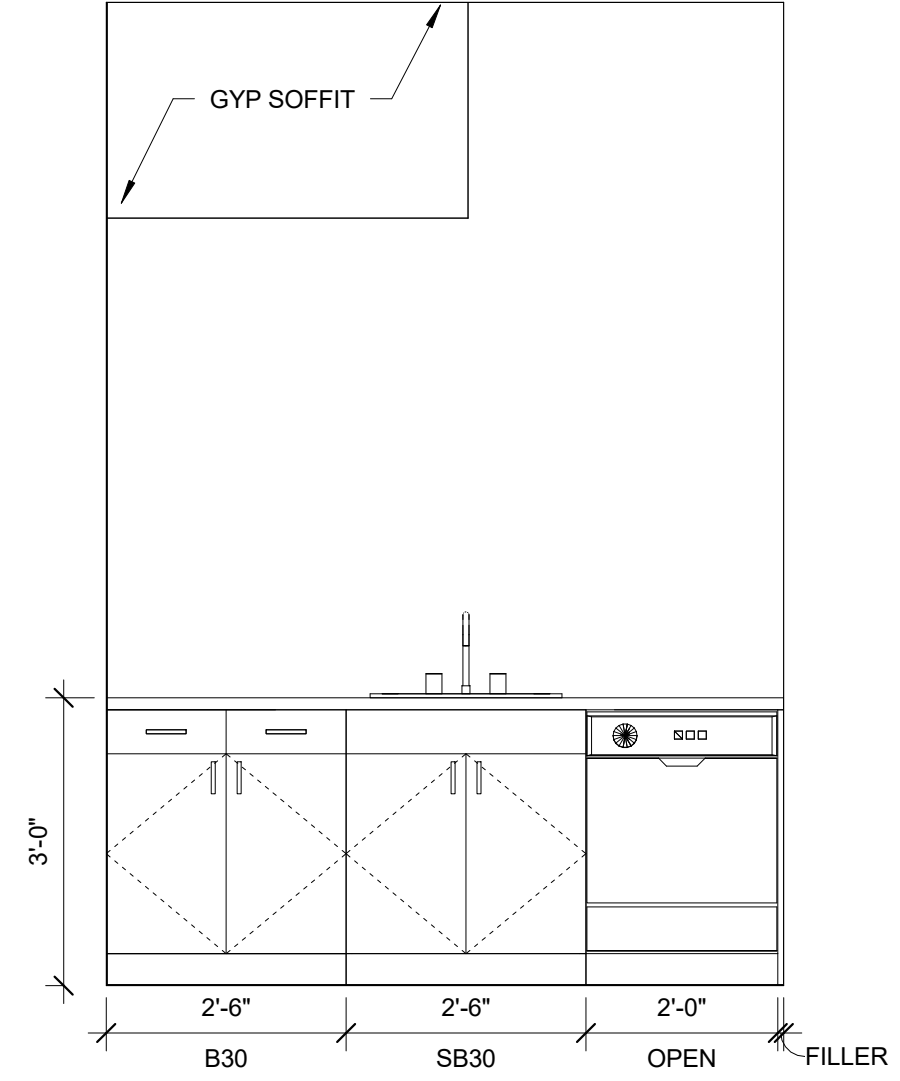
TYPICAL UNIT STORAGE & BATHROOM ACCESSORIES LEGEND

1. TYPICAL UNIT BEDROOM CLOSET
2'-0" DEEP x 5'-0" WIDE BY 8'-0" HIGH
 - 1A. EFFICIENCY UNIT BEDROOM CLOSET
2'-0" DEEP x 3'-0" WIDE BY 8'-0" HIGH
 2. LINEN STORAGE CLOSET
TYPE B UNITS = 1'-6" DEEP X 1'-8"(MIN) WIDE.
ACCESSIBLE UNITS = 1'-8" DEEP X 1'-8"(MIN) WIDE.
PROVIDE WITH (4) SHELVES SPACED AS SHOWN ON
DTL. 1/A6.30. YIELDS 10 SF MINIMUM OF SHELVING AREA.
 3. COAT CLOSET
(1) 2'-0" DEEP x 2'-0" DEEP BY 8'-0" HIGH.
 4. GENERAL STORAGE
TYPICAL FINISHED CEILING HEIGHT IS 8'-0". EACH LINEAR
FOOT OF GENERAL STORAGE CLOSET YIELDS 16 CUBIC
FEET OF STORAGE. TOTAL CUBIC FEET HAS BEEN
INDICATED ON EACH UNIT AS MEETING OR EXCEEDING
100 CUBIC FEET FOR 1 BEDROOM UNITS, 50 CUBIC FEET
FOR EFFICIENCIES. SEE CLOSET AREA, SHOWN IN LIGHT
GREY.
 5. SURFACE MOUNTED MEDICINE CABINET
REFER TO SPECIFICATIONS
 6. NOT USED
 7. NOT USED
 8. 24" TOWEL BAR
 9. 18" TOWEL BAR
 10. TAYMOR 01-9404 TOWEL RING
= WALL WHERE SHOWER CONTROLS &
SHOWER HEAD MUST BE LOCATED
 11. TOILET PAPER HOLDER
- NOTE: VANITY CABINET WIDTHS ARE LISTED - VANITY
TOPS MUST BE 1" WIDER TO OVERHANG 1/2" EACH SIDE

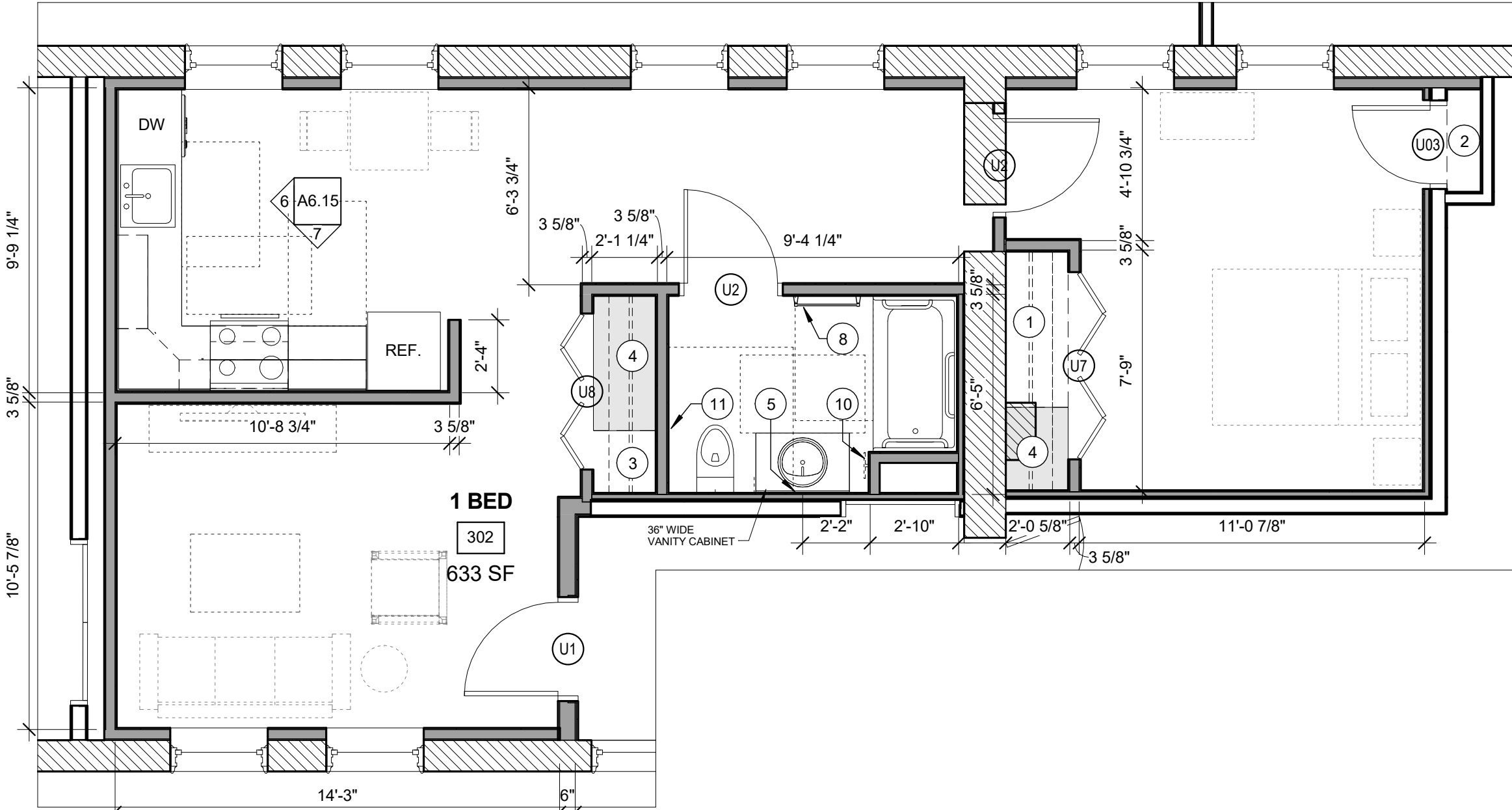


3 | UNIT 303
1/4" = 1'-0"

ONE BEDROOM - ANSI 117.1 TYPE B UNIT
GENERAL STORAGE = 126.6 CU. FT.

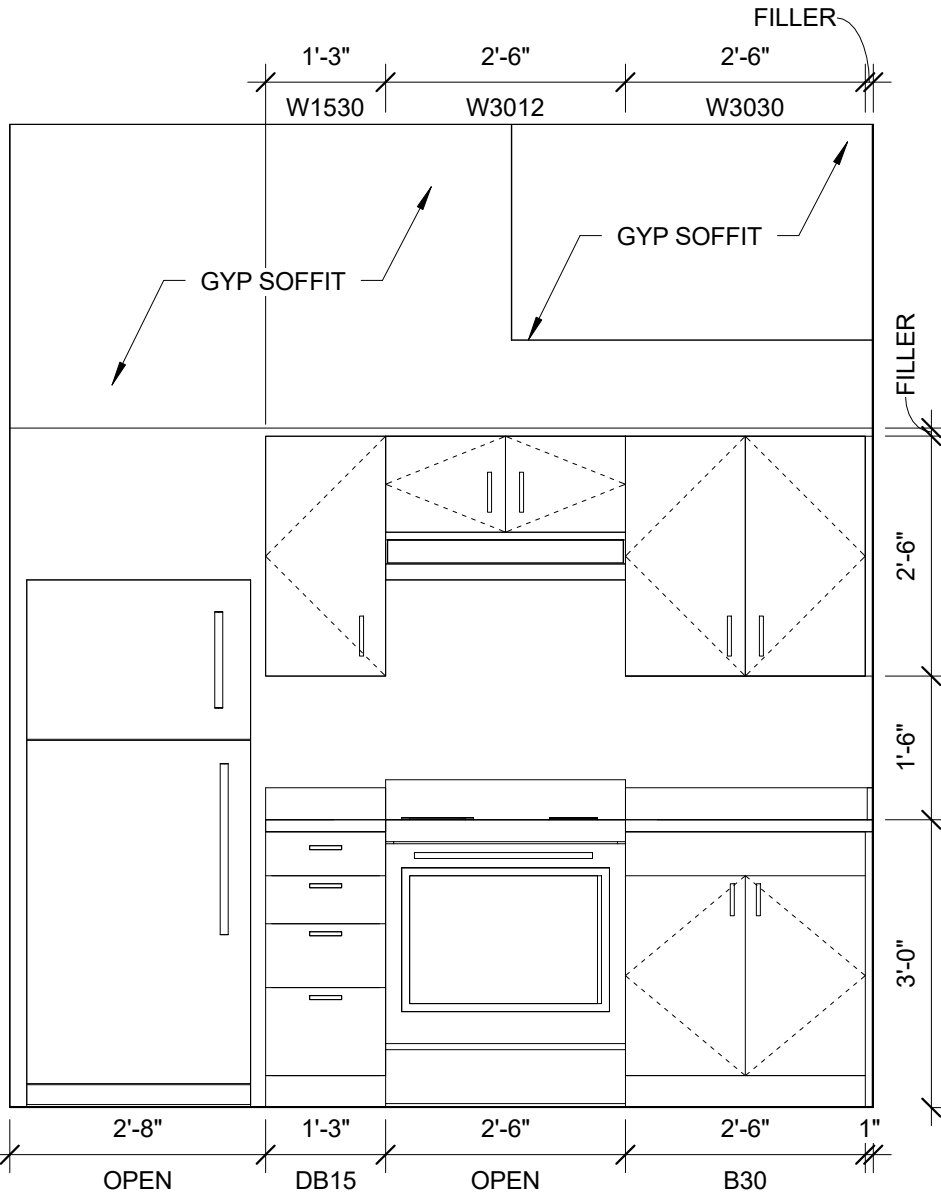


8 | UNIT 303 KITCHEN ELEVATION
1/2" = 1'-0"

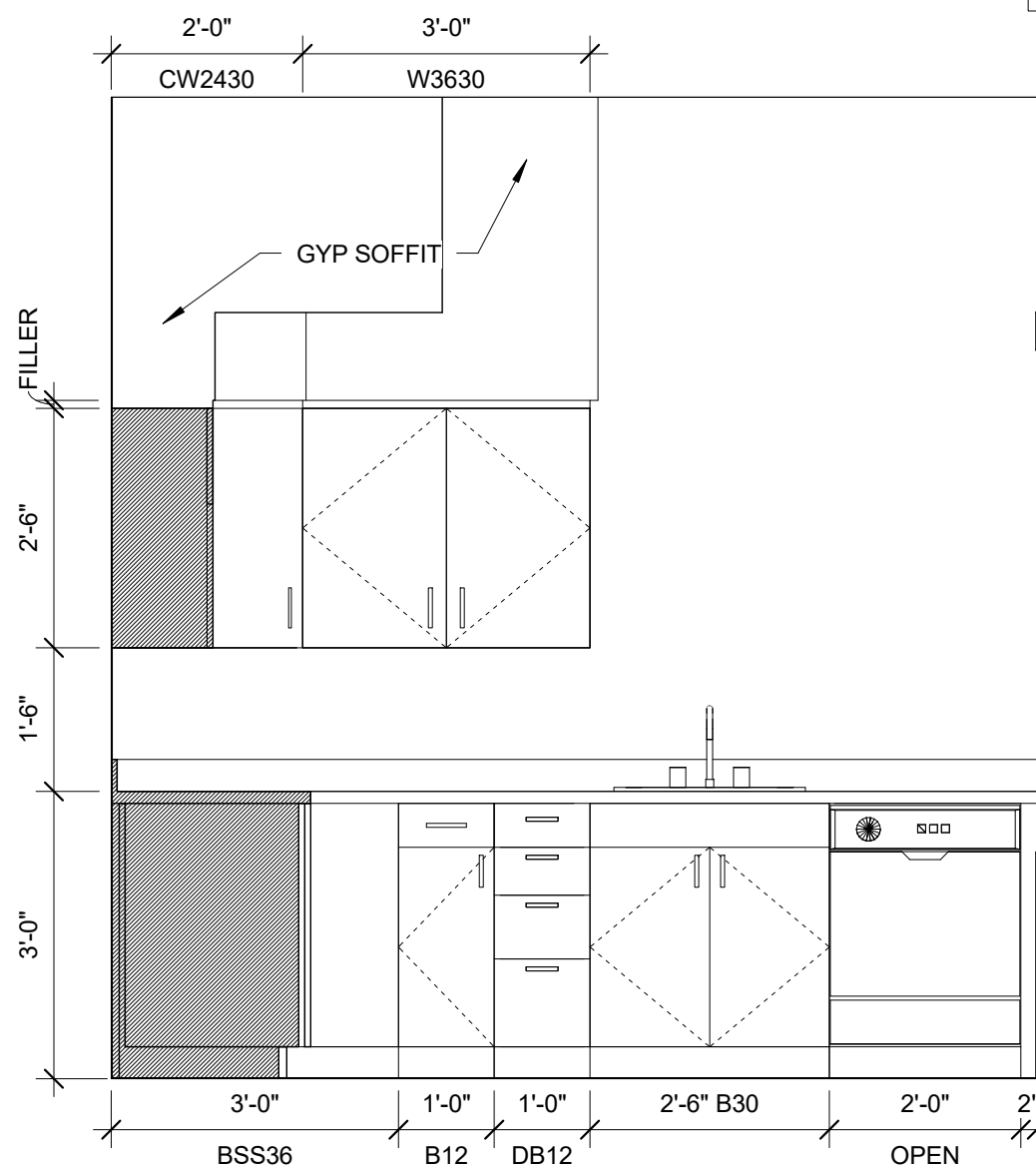


2 | UNIT 302
1/4" = 1'-0"

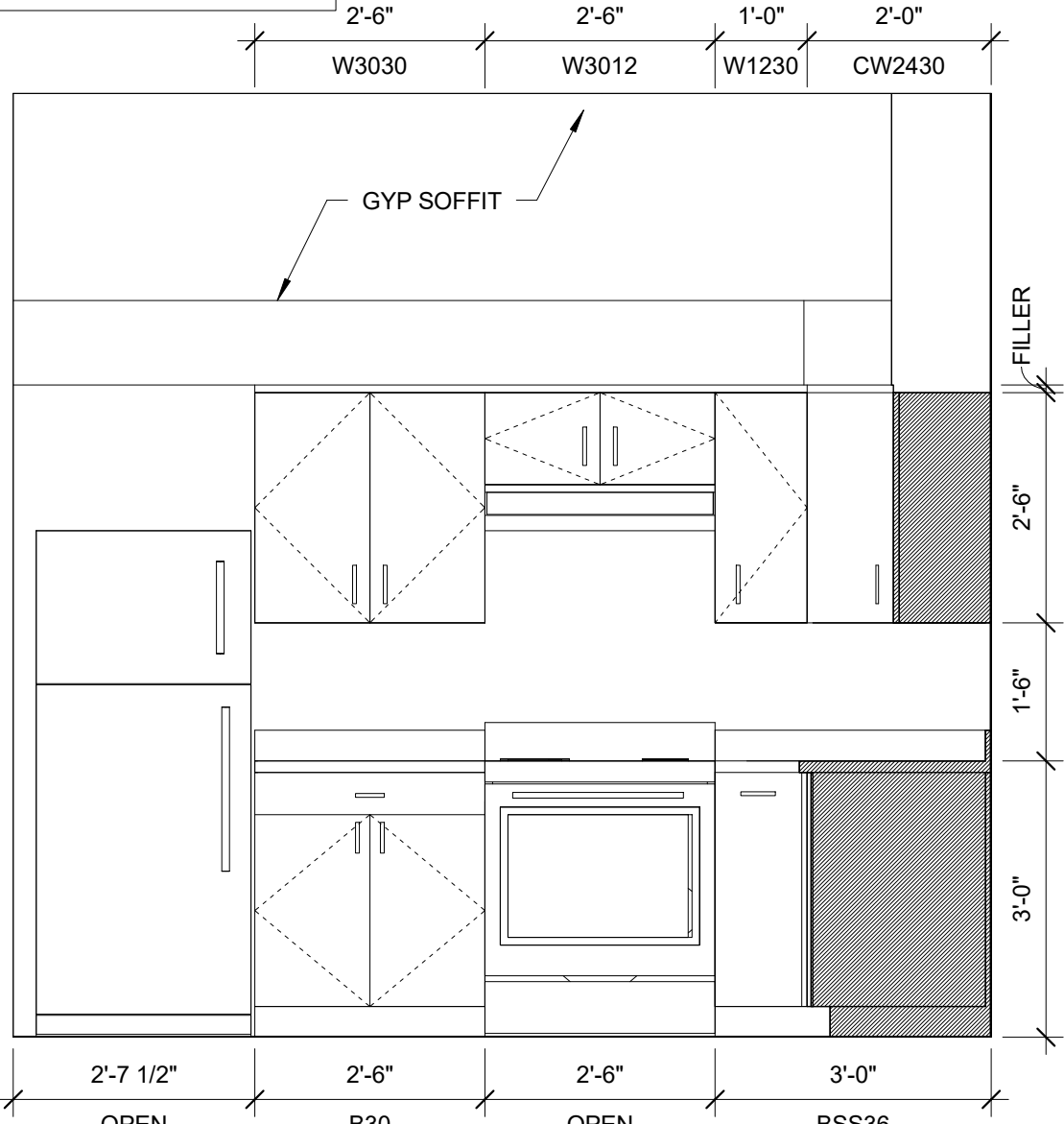
ONE BEDROOM - ANSI 117.1 TYPE B UNIT
GENERAL STORAGE = 111.6 CU. FT.



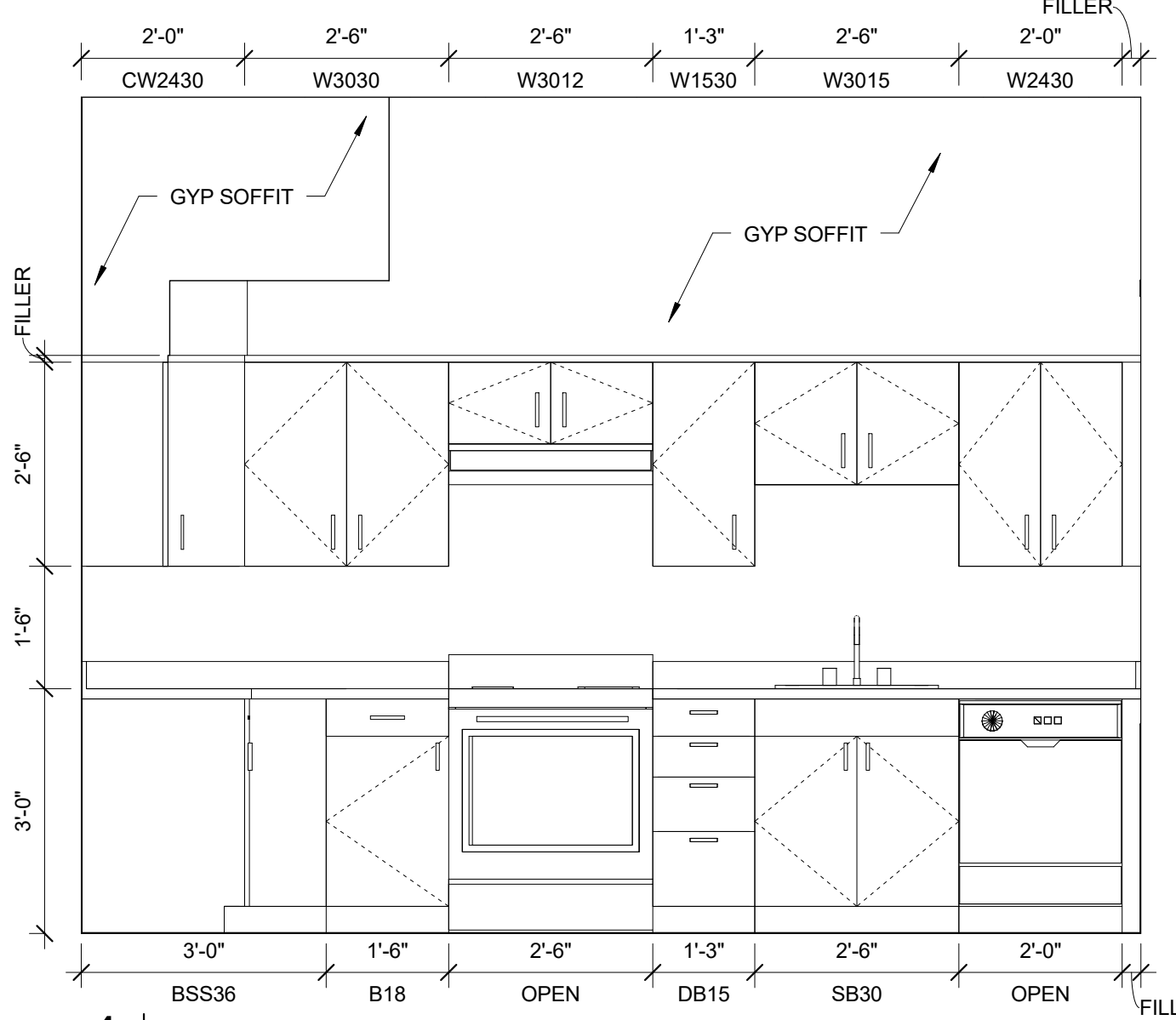
9 | UNIT 303 KITCHEN ELEVATION
1/2" = 1'-0"



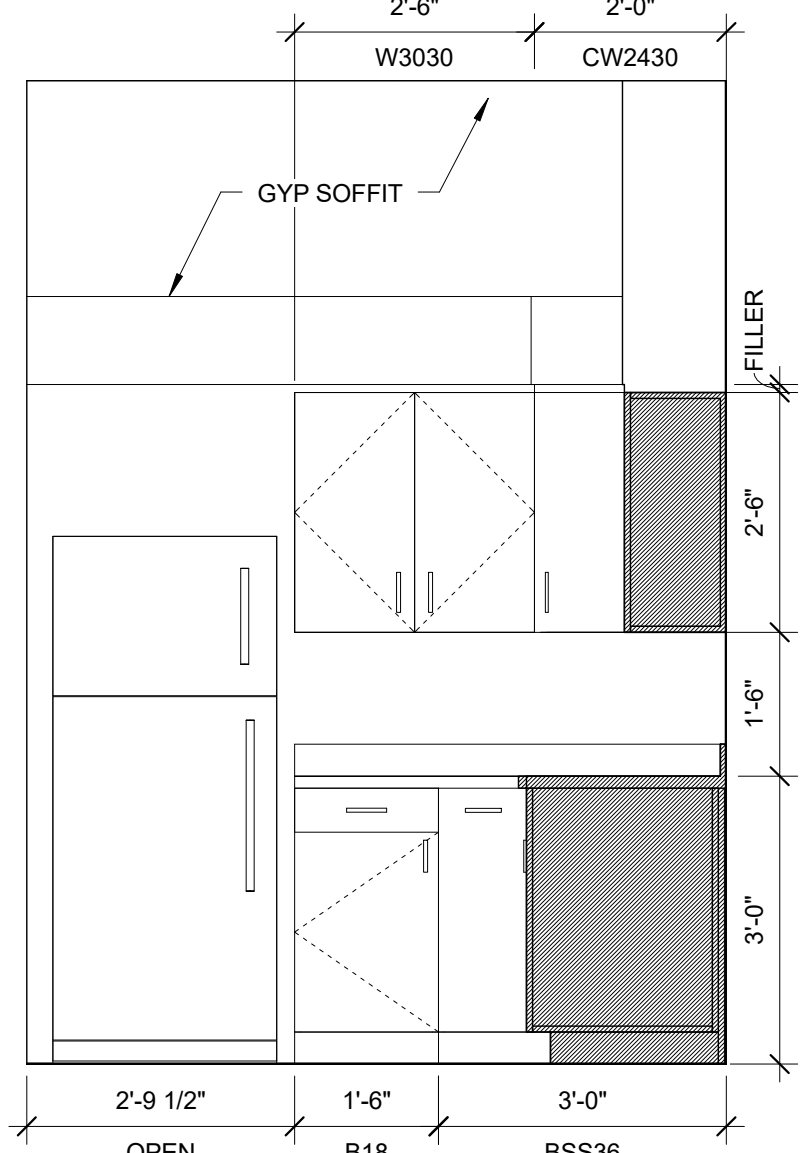
6 | UNIT 302 KITCHEN ELEVATION
1/2" = 1'-0"



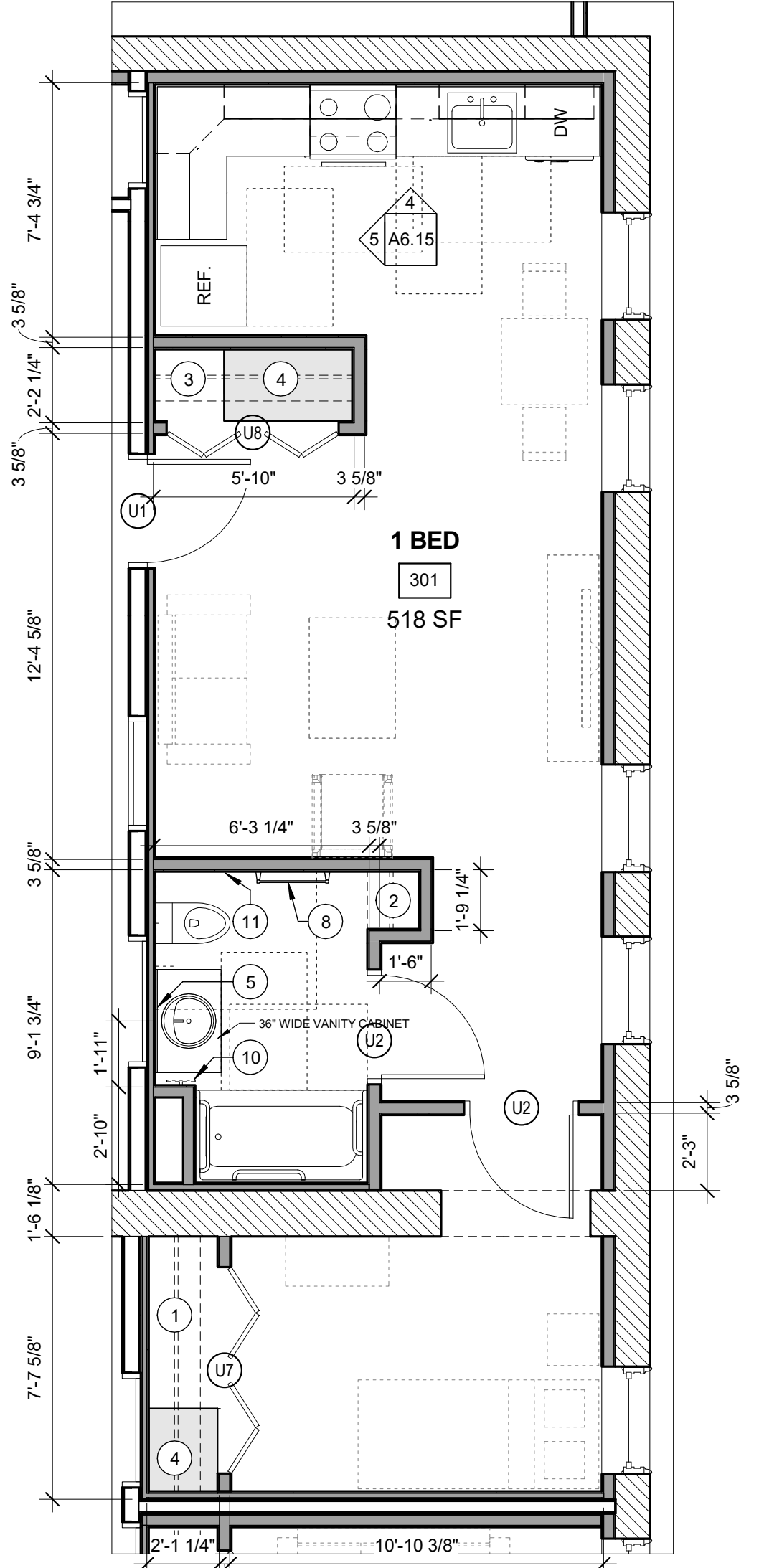
7 | UNIT 302 KITCHEN ELEVATION
1/2" = 1'-0"



4 | UNIT 301 KITCHEN ELEVATION
1/2" = 1'-0"



5 | UNIT 301 KITCHEN ELEVATION
1/2" = 1'-0"



1 | UNIT 301
1/4" = 1'-0"

ONE BEDROOM - ANSI 117.1 TYPE B UNIT
GENERAL STORAGE = 104.3 CU. FT.