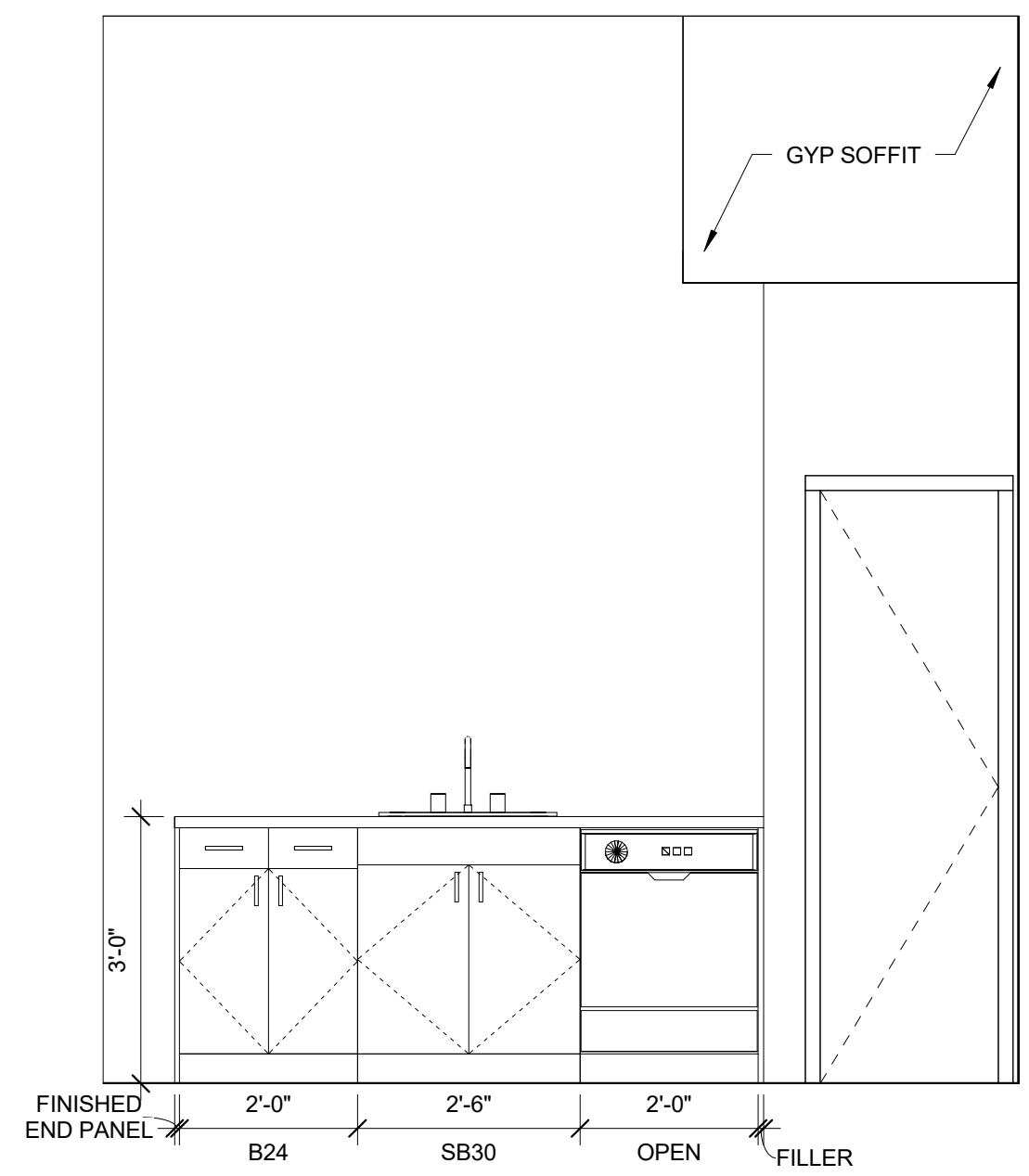
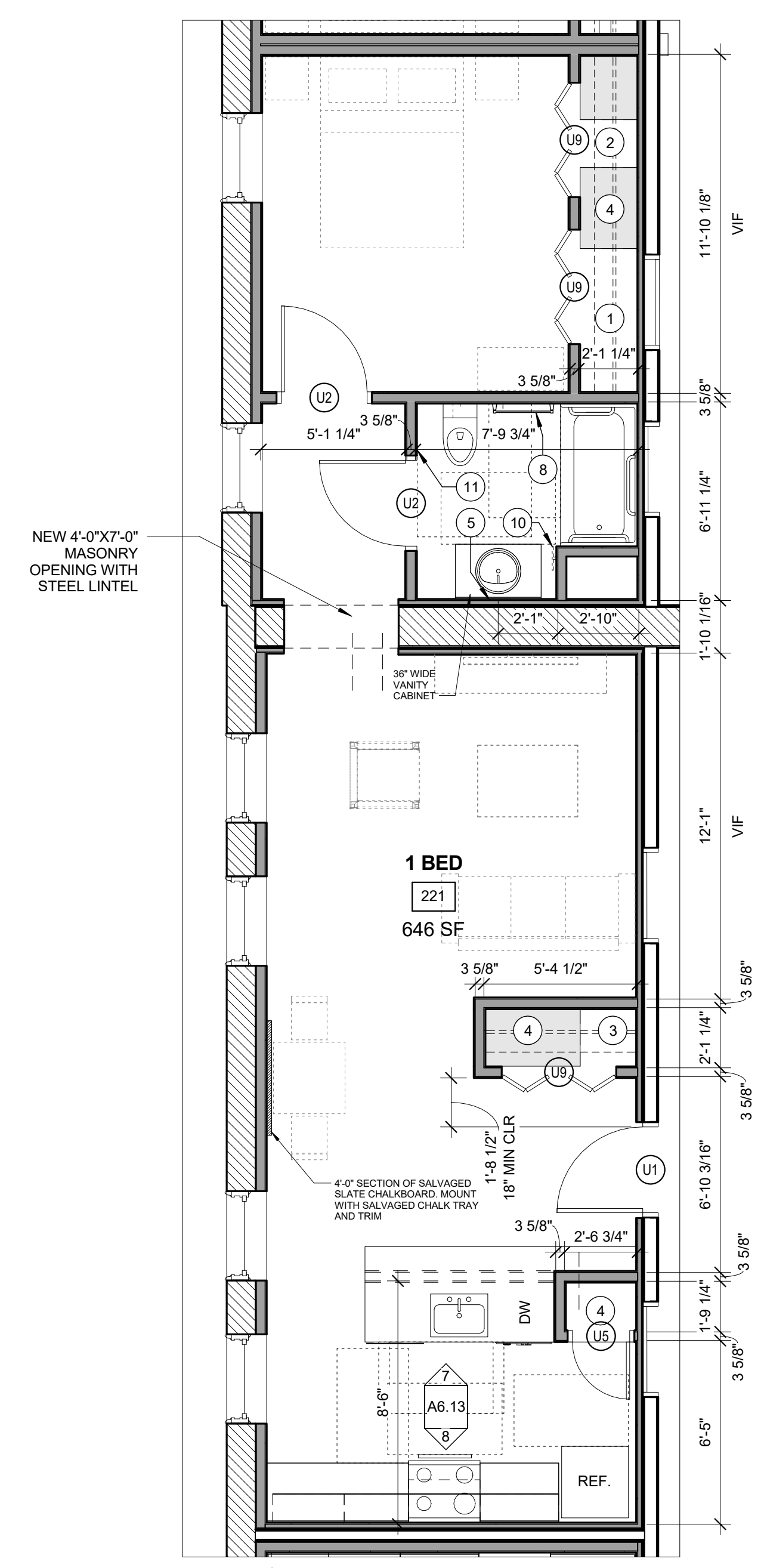


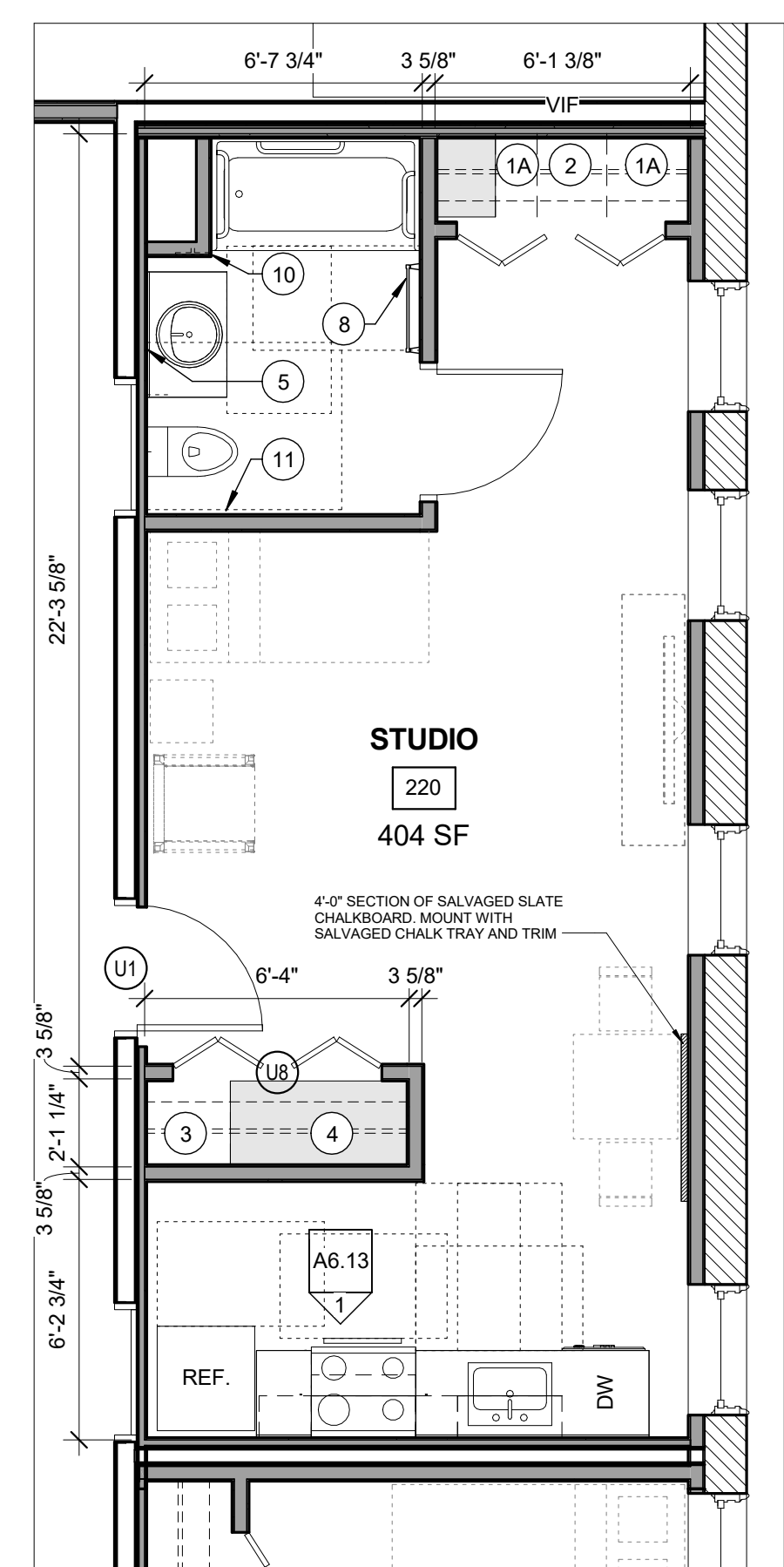
**8 | UNIT 221 KITCHEN ELEVATION**  
1/2" = 1'-0"



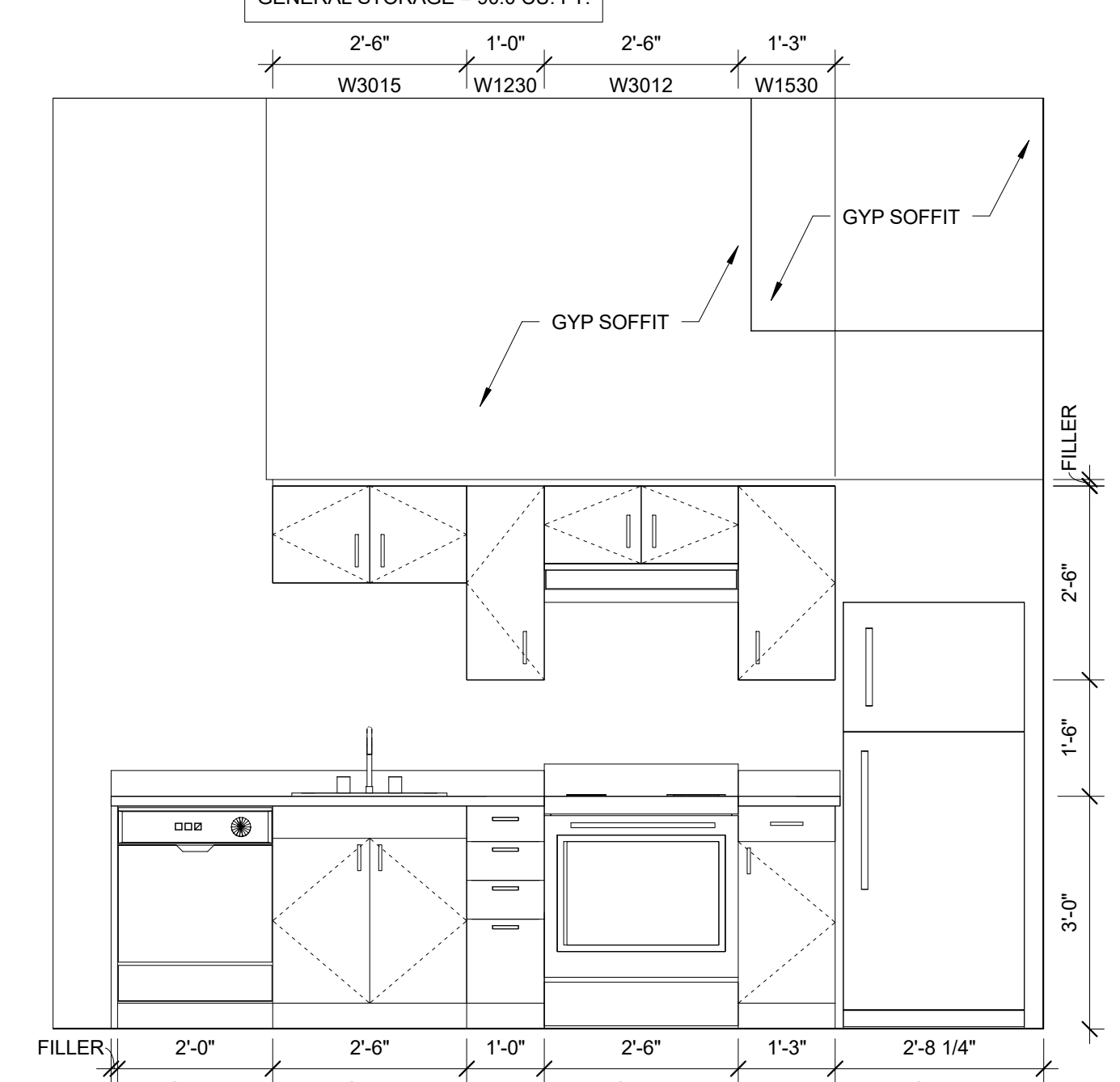
**7 | UNIT 221 KITCHEN ELEVATION**  
1/2" = 1'-0"



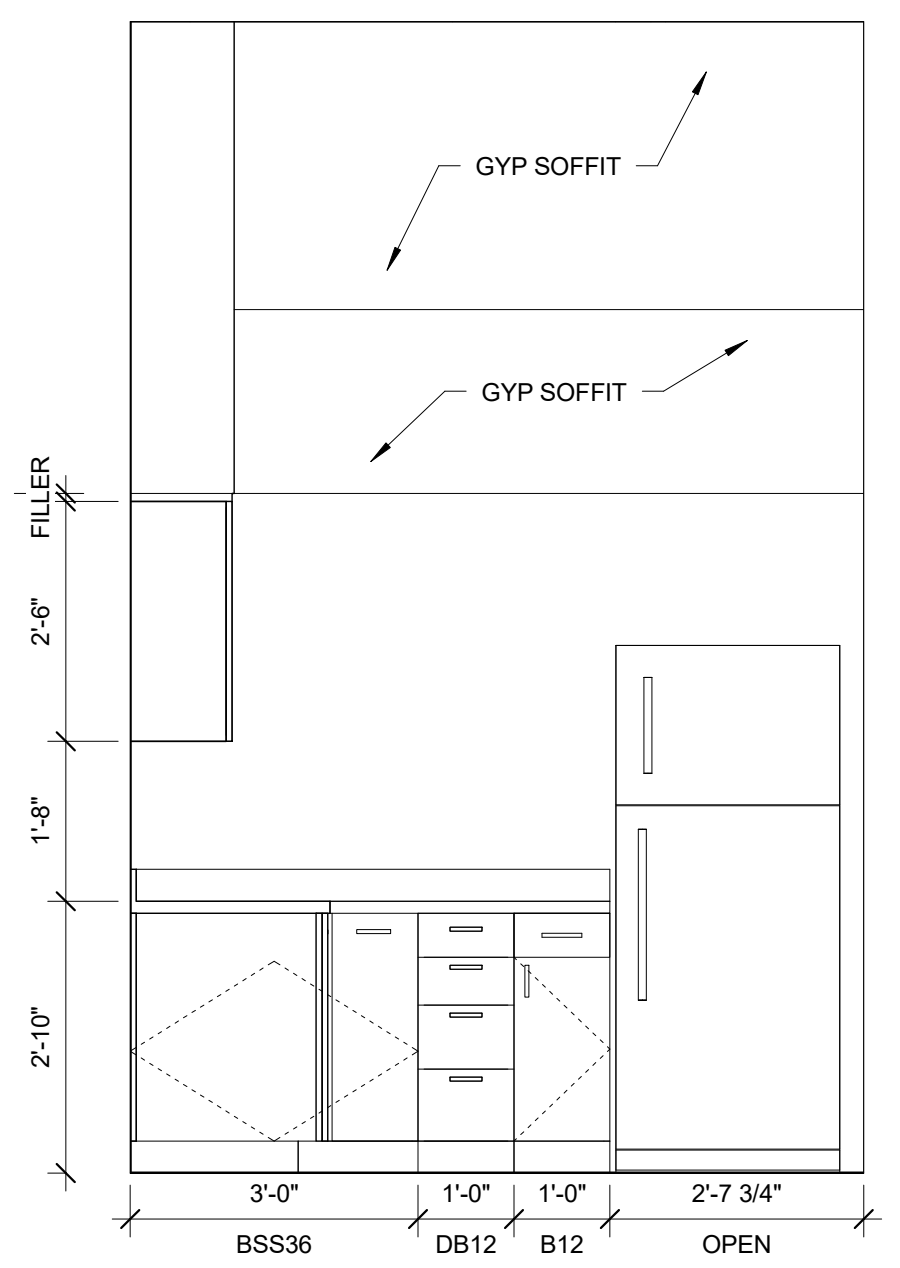
**6 | UNIT 221**  
1/4" = 1'-0"  
1 BEDROOM - ANSI 117.1 TYPE B  
GENERAL STORAGE = 167.0 CU. FT.



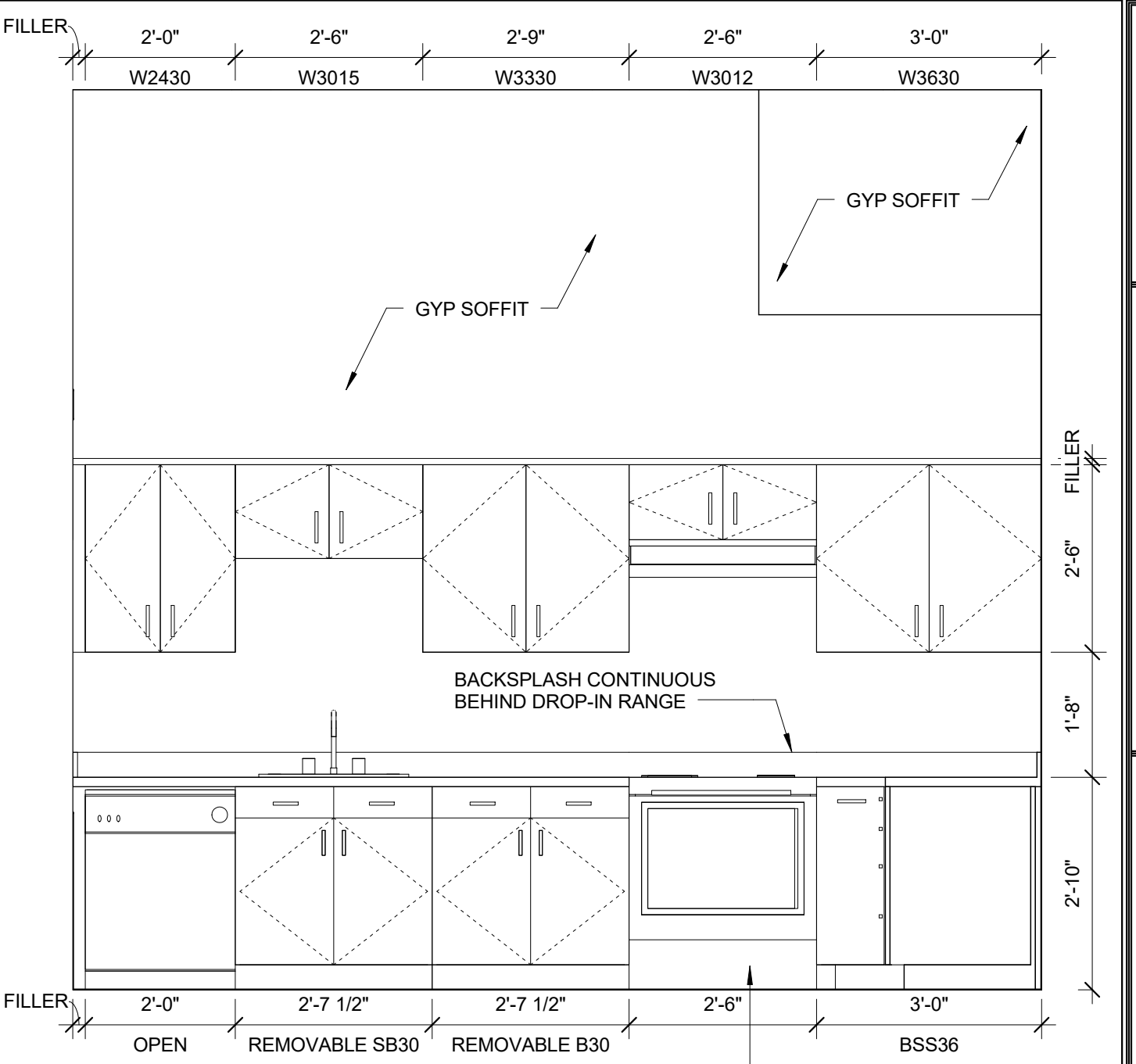
**5 | UNIT 220**  
1/4" = 1'-0"  
EFFICIENCY - ANSI 117.1 TYPE B  
GENERAL STORAGE = 90.0 CU. FT.



**1 | UNIT 220 KITCHEN ELEVATION**  
1/2" = 1'-0"

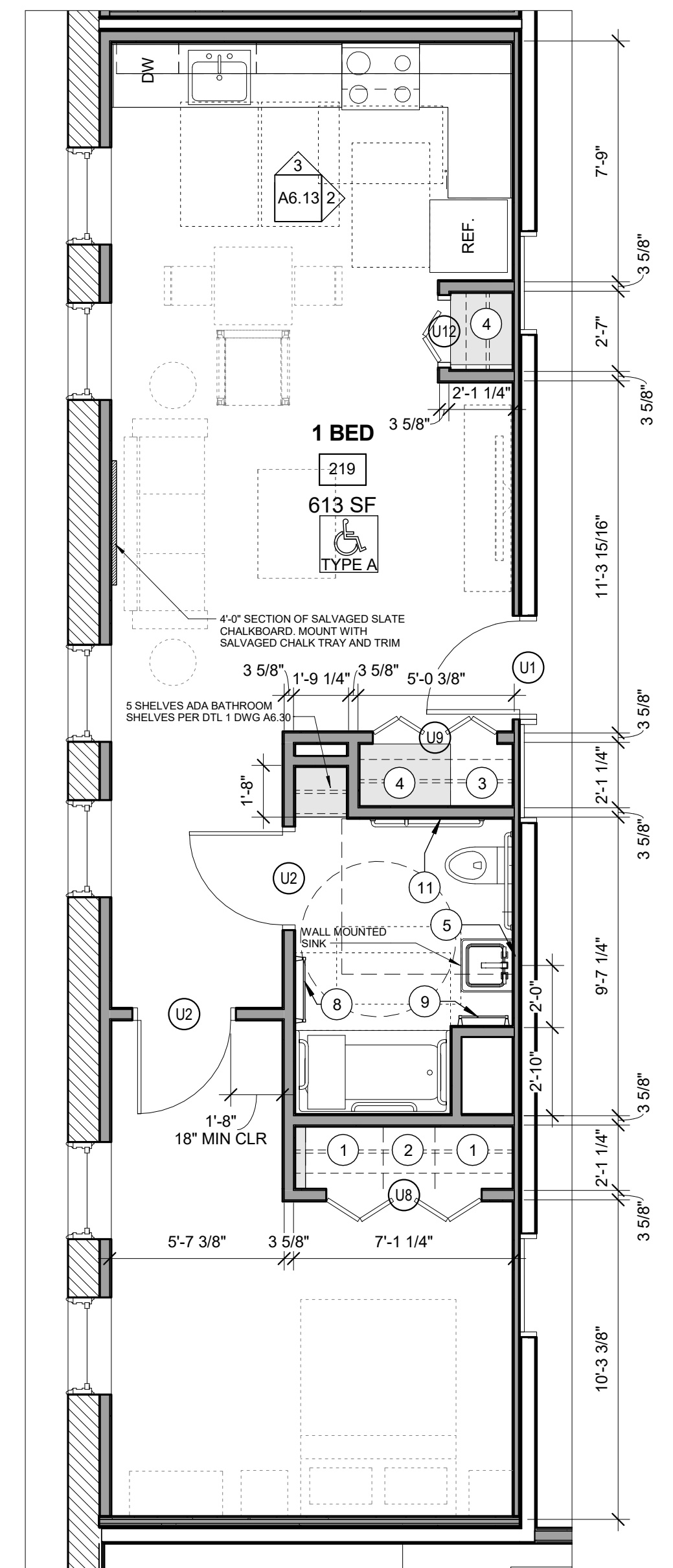


**2 | UNIT 219 KITCHEN ELEVATION**  
1/2" = 1'-0"

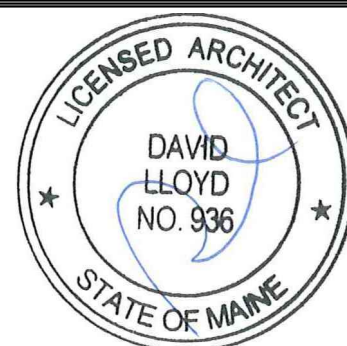


**3 | UNIT 219 KITCHEN ELEVATION**  
1/2" = 1'-0"  
INSTALL BASE PANEL MATCHING CABINETS BELOW DROP-IN RANGE

- TYPICAL UNIT STORAGE & BATHROOM ACCESSORIES LEGEND**
1. TYPICAL UNIT BEDROOM CLOSET  
2'-0" DEEP x 5'-0" WIDE BY 8'-0" HIGH
  - 1A. EFFICIENCY UNIT BEDROOM CLOSET  
20" DEEP x 3'-0" WIDE BY 8'-0" HIGH
  2. LINEN STORAGE CLOSET  
TYPE B UNITS = 1'-6" DEEP X 1'-8" (MIN) WIDE.  
ACCESSIBLE UNITS = 1'-8" DEEP X 1'-8" (MIN) WIDE.  
PROVIDE WITH (4) SHELVES SPACED AS SHOWN ON  
DTL 1/A6.30. YIELDS 10 SF MINIMUM OF SHELVING AREA.
  3. COAT CLOSET  
(1) 2'-0" DEEP x 2'-0" DEEP BY 8'-0" HIGH.
  4. GENERAL STORAGE  
TYPICAL FINISHED CEILING HEIGHT IS 8'-0". EACH LINEAR  
FOOT OF GENERAL STORAGE CLOSET YIELDS 16 CUBIC  
FEET OF STORAGE. TOTAL CUBIC FEET HAS BEEN  
INDICATED ON EACH UNIT AS MEETING OR EXCEEDING  
100 CUBIC FEET FOR 1 BEDROOM UNITS; 50 CUBIC FEET  
FOR EFFICIENCIES. SEE CLOSET AREA, SHOWN IN LIGHT  
GREY.
  5. SURFACE MOUNTED MEDICINE CABINET  
REFER TO SPECIFICATIONS
  6. NOT USED
  7. NOT USED
  8. 24" TOWEL BAR
  9. 18" TOWEL BAR
  10. TAYMOR 01-9404 TOWEL RING
  11. TOILET PAPER HOLDER  
= WALL WHERE SHOWER CONTROLS &  
SHOWER HEAD MUST BE LOCATED
- NOTE:** VANITY CABINET WIDTHS ARE LISTED - VANITY  
TOPS MUST BE 1" WIDER TO OVERHANG 1/2" EACH SIDE



**4 | UNIT 219**  
1/4" = 1'-0"  
ONE BEDROOM - ANSI 117.1 TYPE A  
GENERAL STORAGE = 113.3 CU. FT.



Prepared For:  
**MOTHERHOUSE  
LLC**

Consultant:  
**ARCHETYPE  
architects**  
48 Union Wharf Portland, Maine 04101  
(207) 772-0022 ARCHETYPE@ARCHETYPEA.COM

Project:  
**MOTHERHOUSE  
SENIOR HOUSING**  
605 STEVENS AVENUE  
PORTLAND, MAINE 04103

Revisions:

Date: 15 FEB 2016  
Scale: As indicated

**UNIT PLANS  
(219, 220, 221)**

**A6.13**