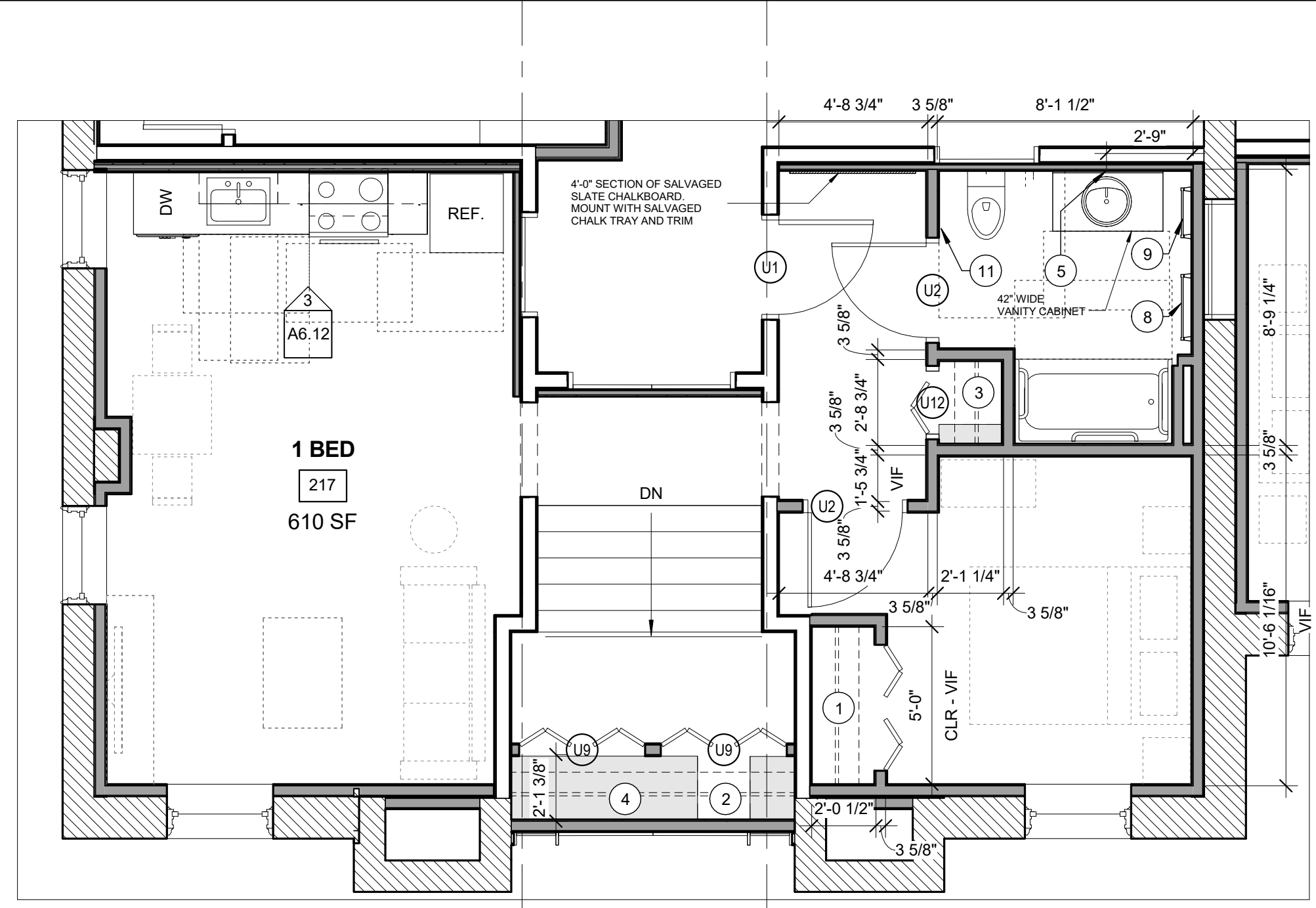


3 | UNIT 217 KITCHEN ELEVATION
 1/2" = 1'-0"



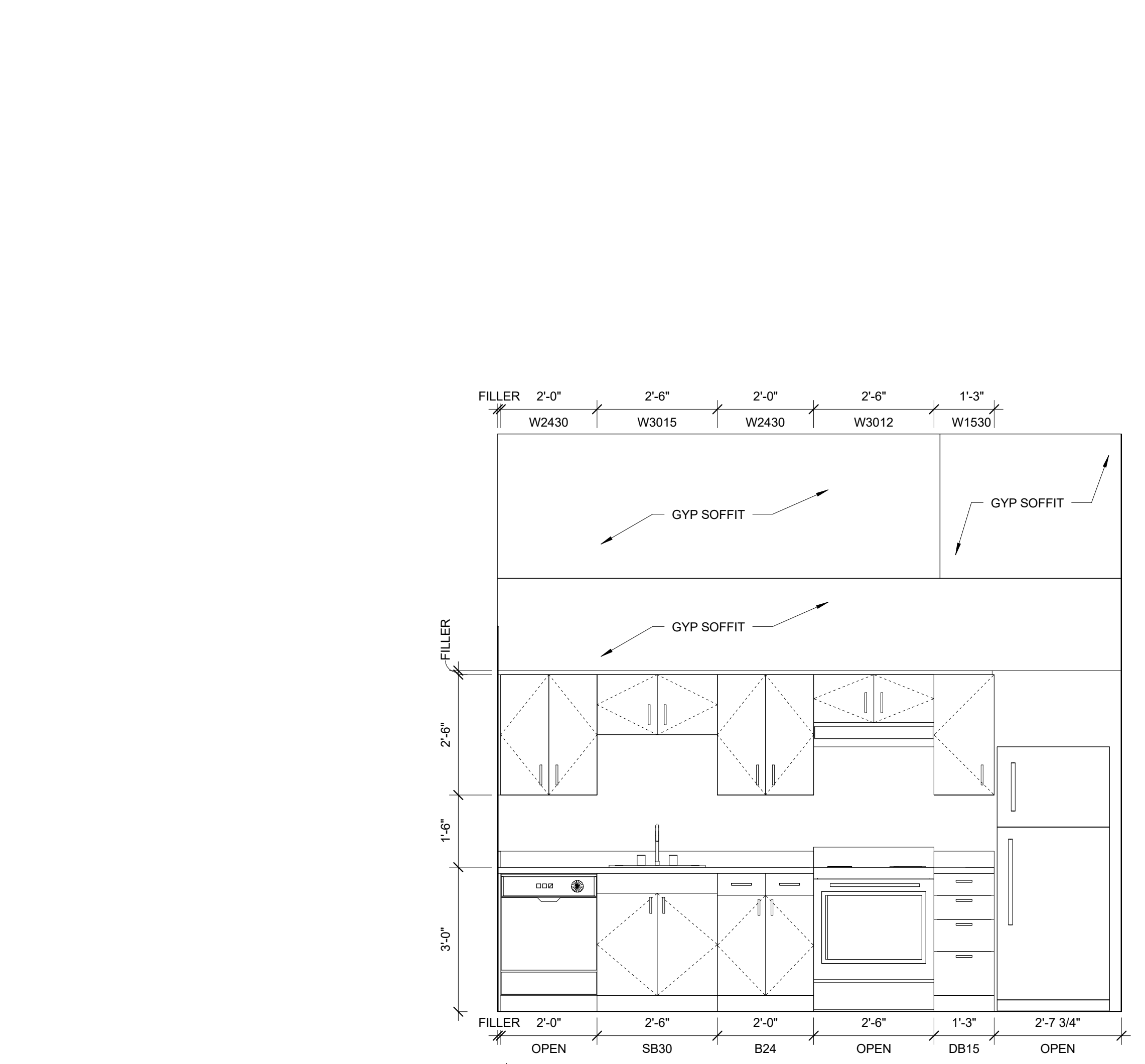
6 | UNIT 217
 1/4" = 1'-0"

TYPICAL UNIT STORAGE & BATHROOM ACCESSORIES
LEGEND

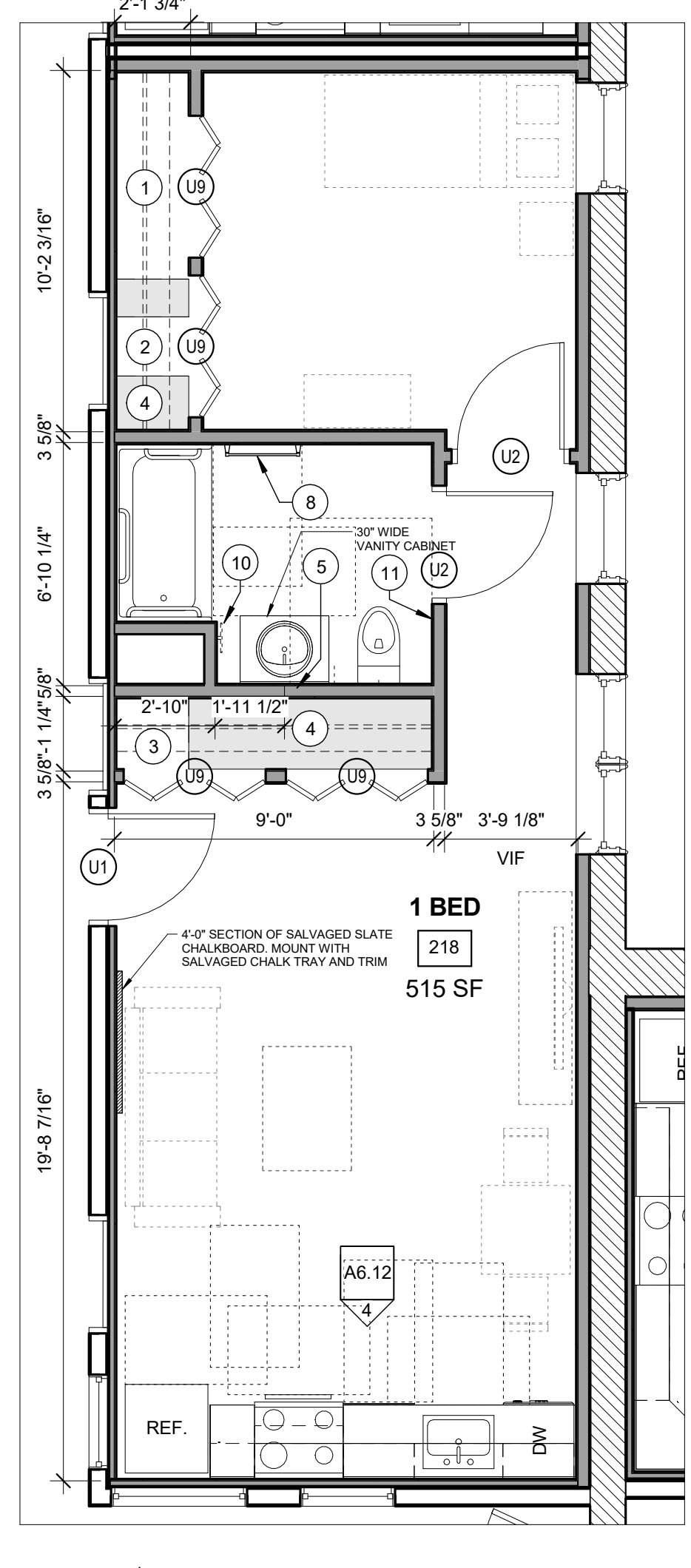
- TYPICAL UNIT BEDROOM CLOSET**
 2'-0" DEEP x 5'-0" WIDE BY 8'-0" HIGH
- EFFICIENCY UNIT BEDROOM CLOSET**
 2'-0" DEEP x 3'-0" WIDE BY 8'-0" HIGH
- LINEN STORAGE CLOSET**
 TYPE B UNITS = 1'-4" DEEP X 1'-8" (MIN) WIDE.
 ACCESSIBLE UNITS = 1'-8" DEEP X 1'-8" (MIN) WIDE.
 PROVIDE WITH (4) SHELVES SPACED AS SHOWN ON DTL 1/A6.30. YIELDS 10 SF MINIMUM OF SHELVING AREA.
- COAT CLOSET**
 (1) 2'-0" DEEP x 2'-0" DEEP BY 8'-0" HIGH.
- GENERAL STORAGE**
 TYPICAL FINISHED CEILING HEIGHT IS 8'-0". EACH LINEAR FOOT OF GENERAL STORAGE CLOSET YIELDS 16 CUBIC FEET OF STORAGE. TOTAL CUBIC FEET HAS BEEN INDICATED ON EACH UNIT AS MEETING OR EXCEEDING 100 CUBIC FEET FOR 1 BEDROOM UNITS, 50 CUBIC FEET FOR EFFICIENCIES. SEE CLOSET AREA, SHOWN IN LIGHT GREY.
- SURFACE MOUNTED MEDICINE CABINET**
 REFER TO SPECIFICATIONS
- NOT USED**
- NOT USED**
- 24" TOWEL BAR**
- 18" TOWEL BAR**
- TAYMOR 01-9404 TOWEL RING**
- TOILET PAPER HOLDER**
 = WALL WHERE SHOWER CONTROLS & SHOWER HEAD MUST BE LOCATED

NOTE: VANITY CABINET WIDTHS ARE LISTED - VANITY TOPS MUST BE 1" WIDER TO OVERHANG 1/2" EACH SIDE

ONE BEDROOM - ANSI 117.1 TYPE B
 GENERAL STORAGE = 127.7 CU. FT.

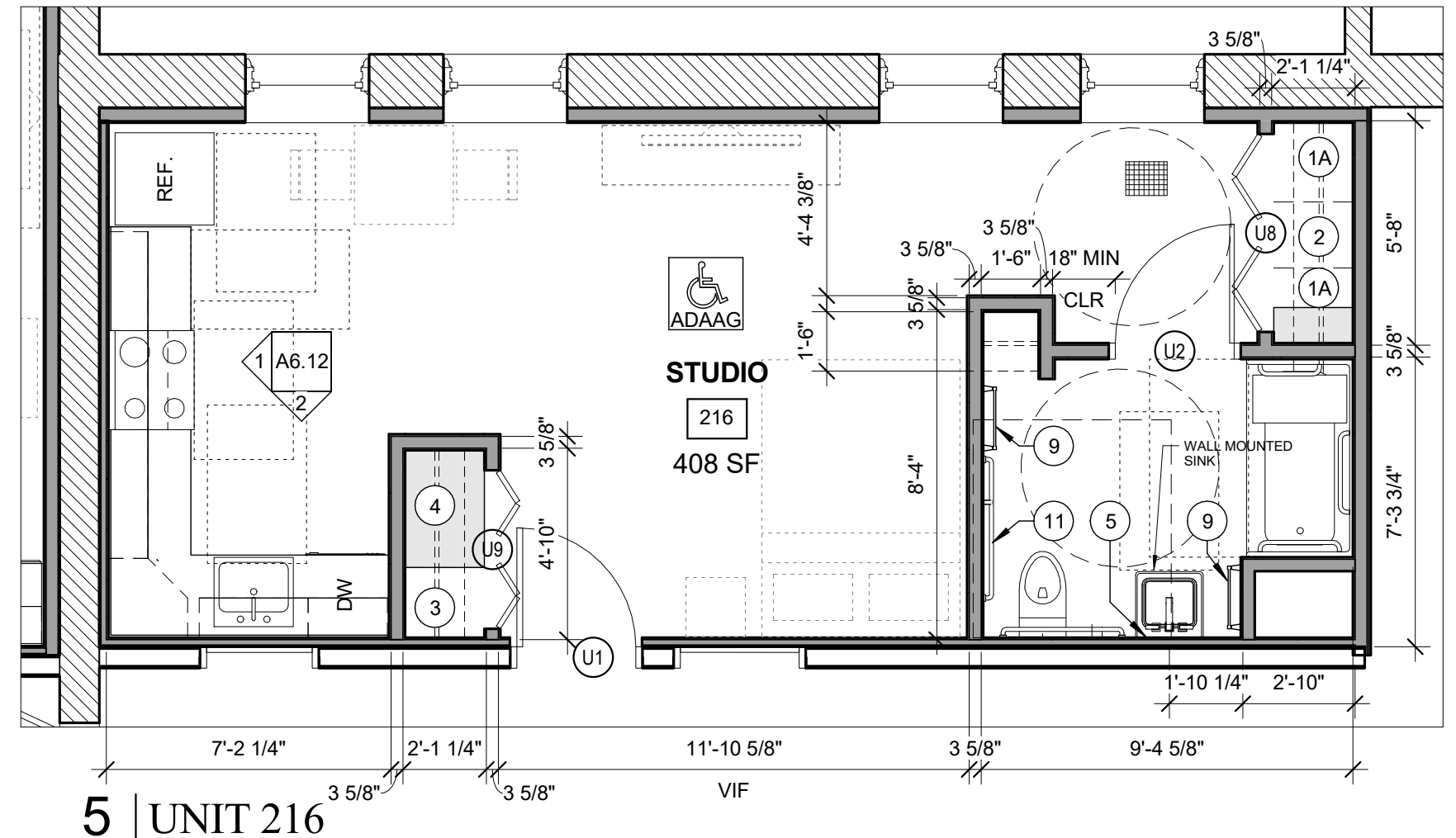


4 | UNIT 218 KITCHEN ELEVATION
 1/2" = 1'-0"



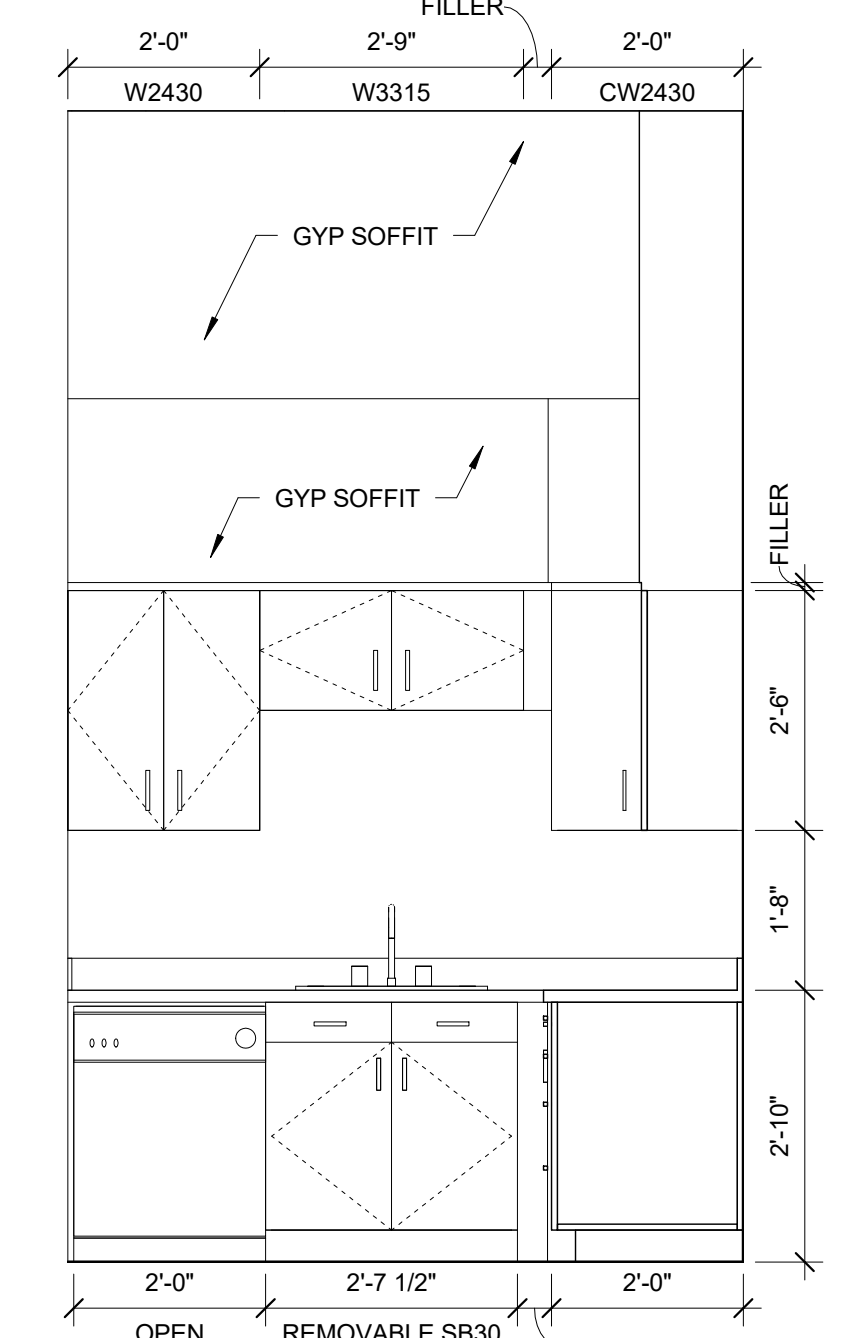
7 | UNIT 218
 1/4" = 1'-0"

ONE BEDROOM - ANSI 117.1 TYPE B
 GENERAL STORAGE = 151.8 CU. FT.

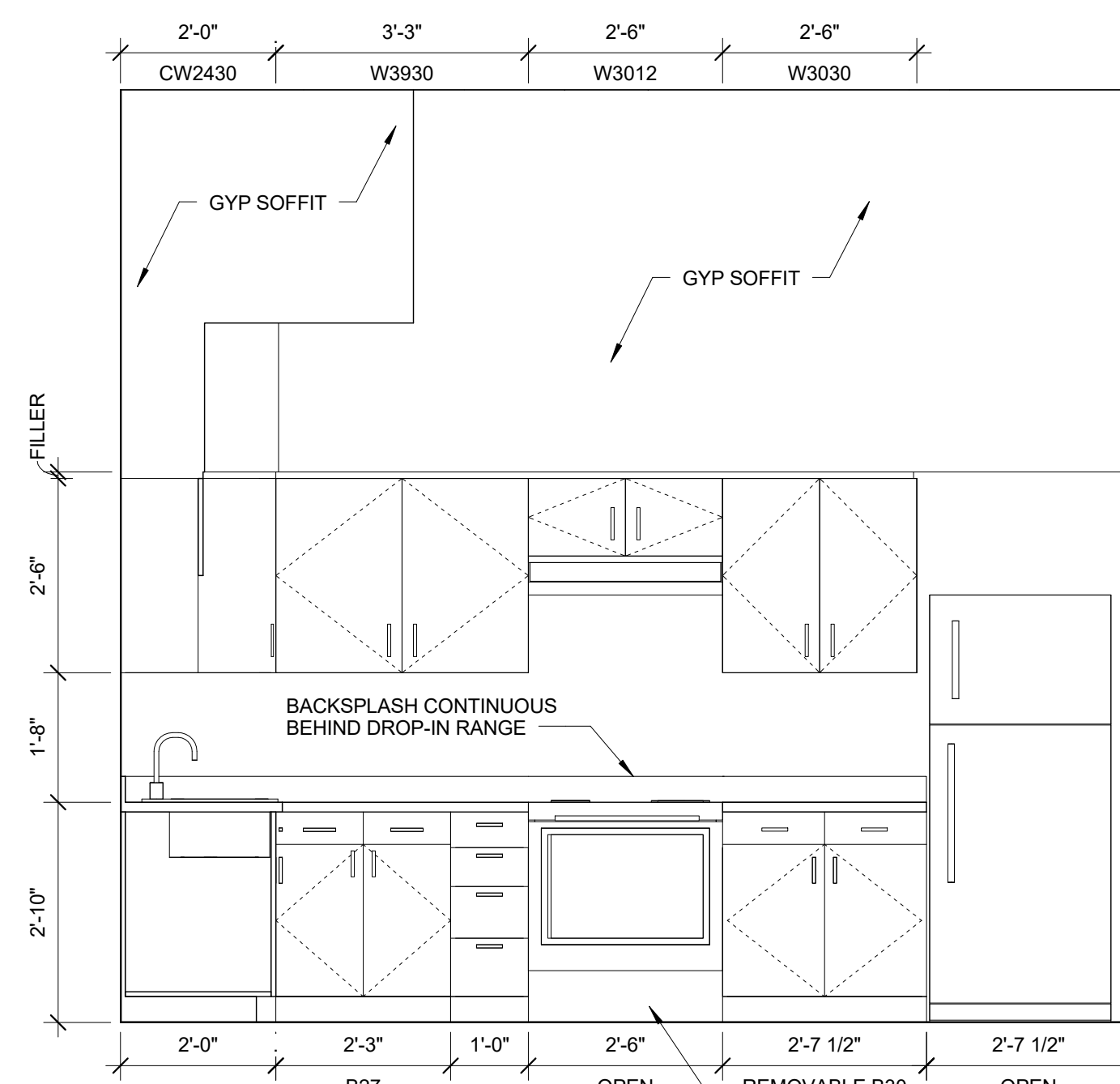


5 | UNIT 216
 1/4" = 1'-0"

ONE BEDROOM - ADAAG
 GENERAL STORAGE = 61.6 CU. FT.

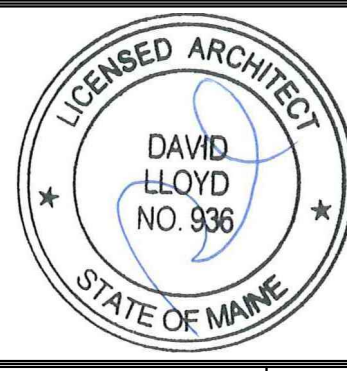


2 | UNIT 216 KITCHEN ELEVATION
 1/2" = 1'-0"



1 | UNIT 216 KITCHEN ELEVATION
 1/2" = 1'-0"

BACKSPLASH CONTINUOUS BEHIND DROP-IN RANGE
 REMOVABLE B30
 INSTALL BASE PANEL MATCHING CABINETS BELOW DROP-IN RANGE



Prepared For:
MOTHERHOUSE LLC

Consultant:
Archetype architects
 48 Union Wharf Portland, Maine 04101
 (207) 772-6022 ARCHETYPE@ARCHETYPEPA.COM

Project:
MOTHERHOUSE SENIOR HOUSING
 605 STEVENS AVENUE
 PORTLAND, MAINE 04103

Date: 15 FEB 2016
 Scale: As indicated
UNIT PLANS (216, 217, 218)

Revisions:

A6.12