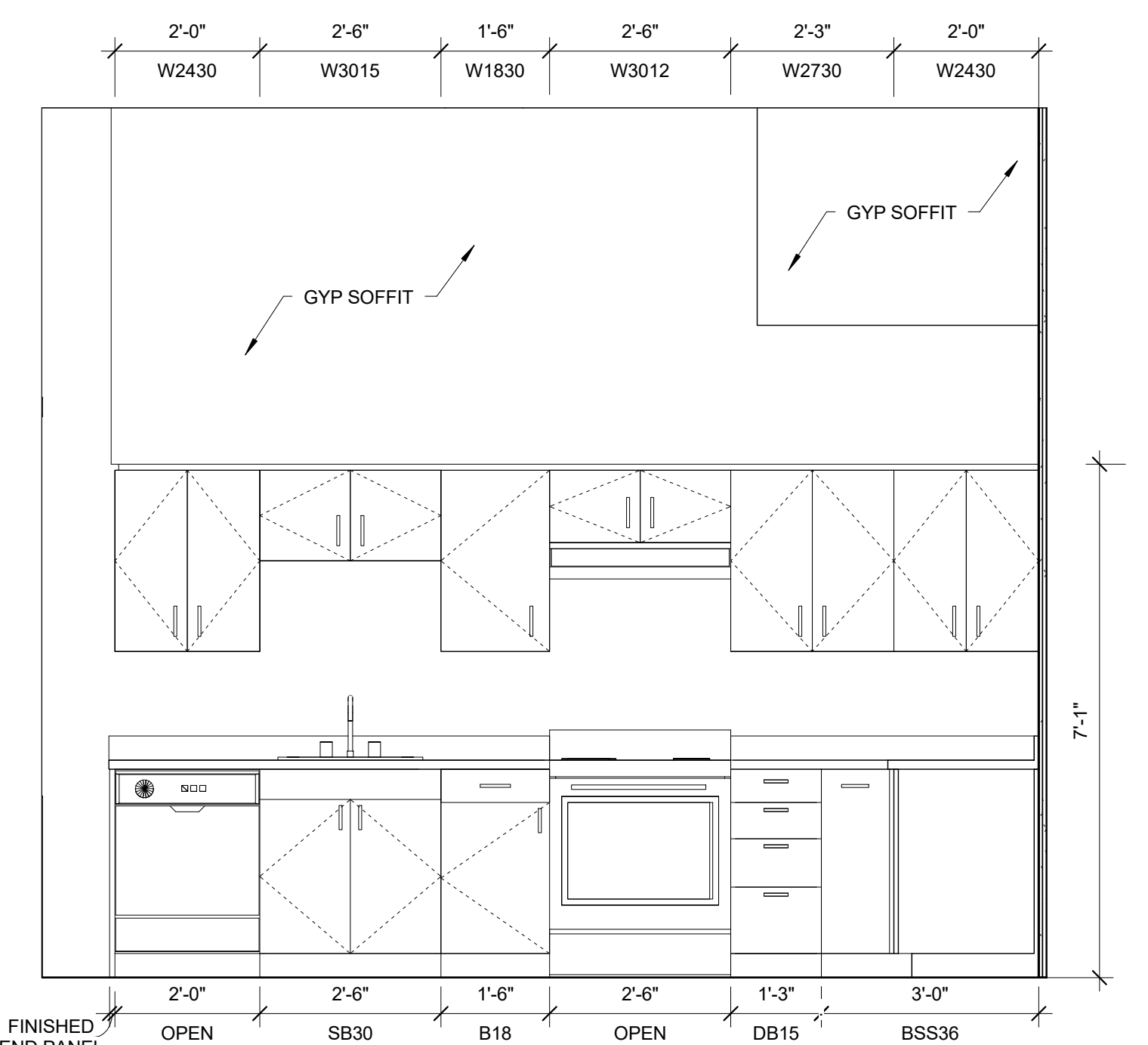
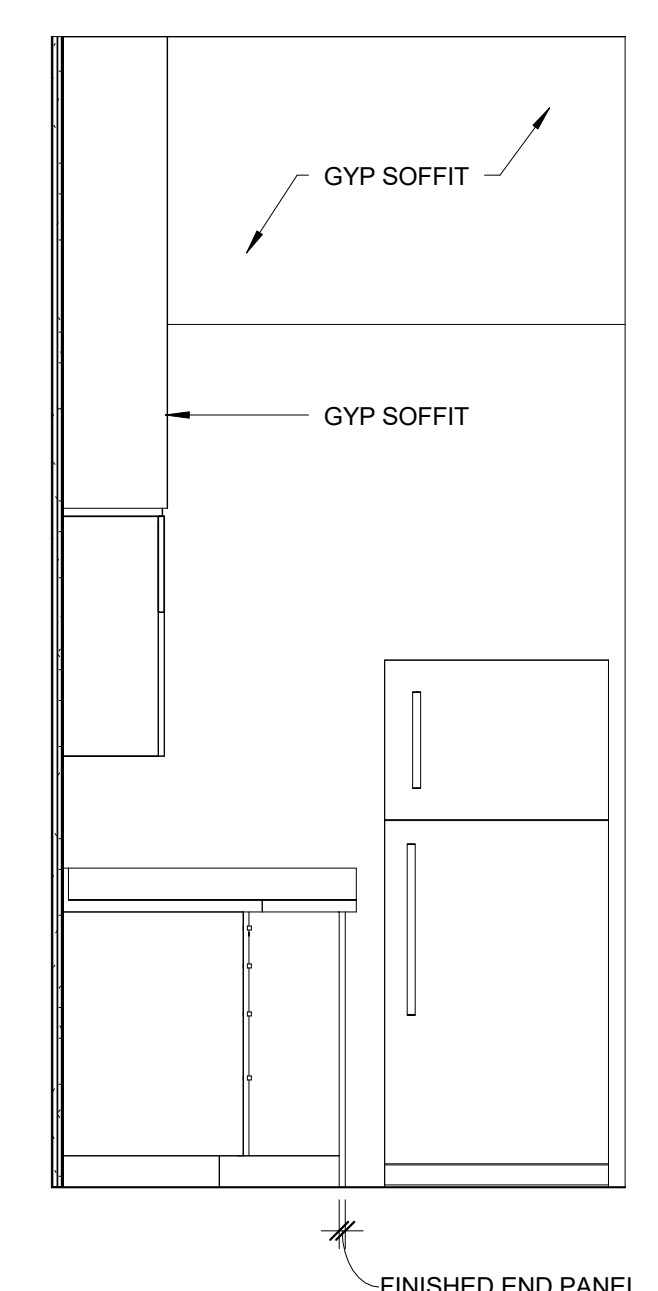


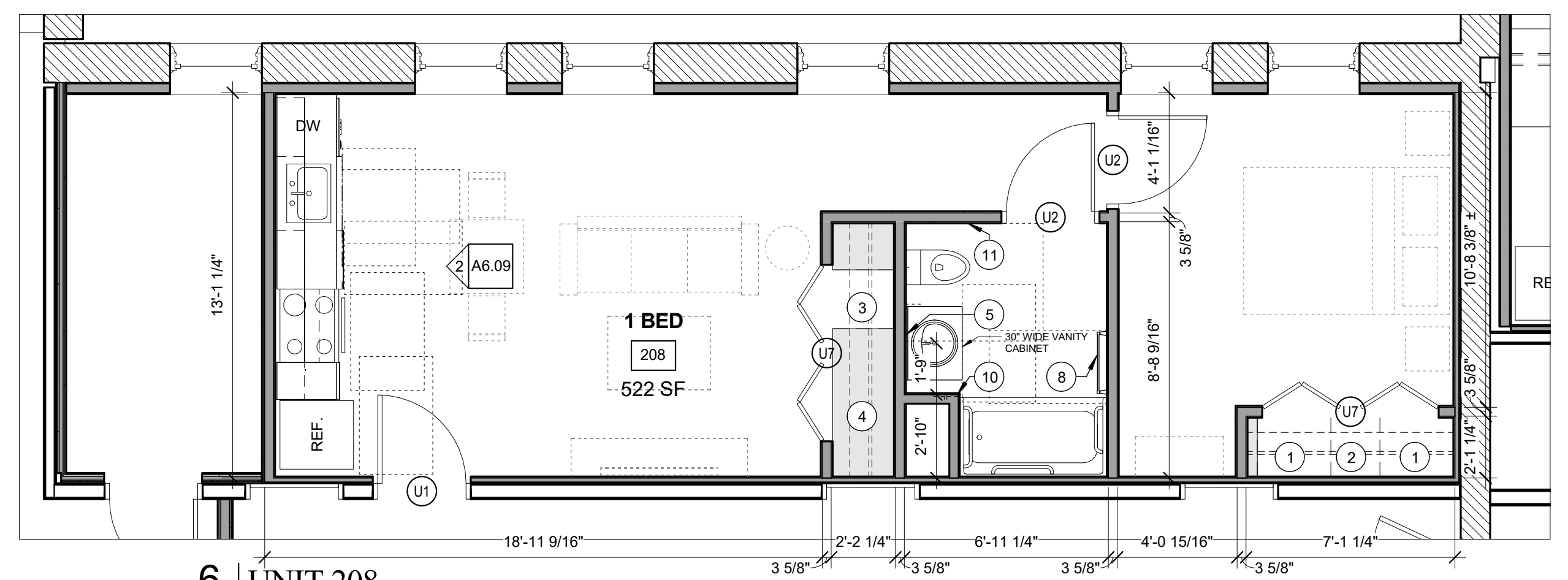
2 | UNIT 208 KITCHEN ELEVATION
1/2" = 1'-0"



4 | UNIT 209 KITCHEN ELEVATION
1/2" = 1'-0"



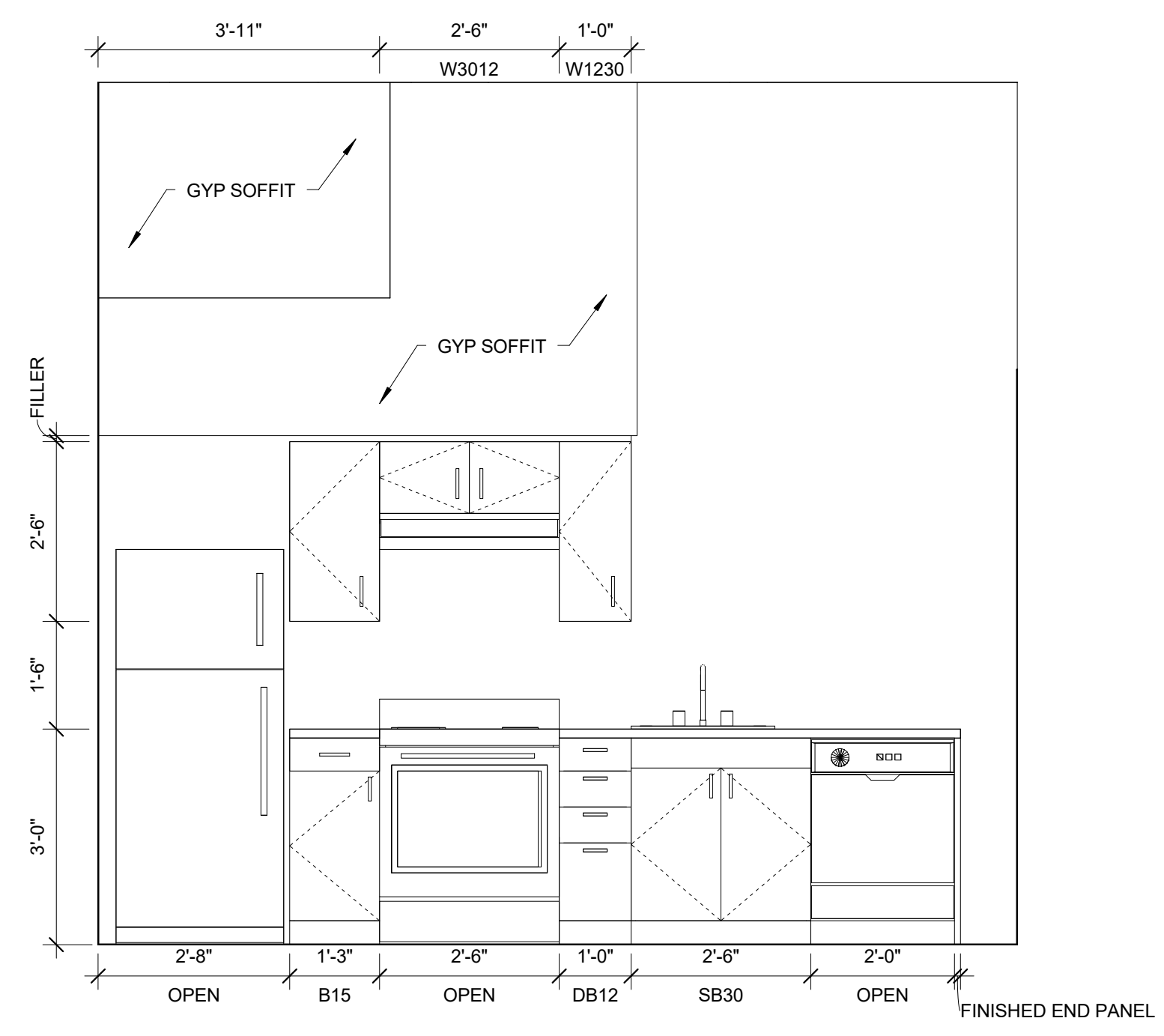
3 | UNIT 209 KITCHEN ELEVATION
1/2" = 1'-0"



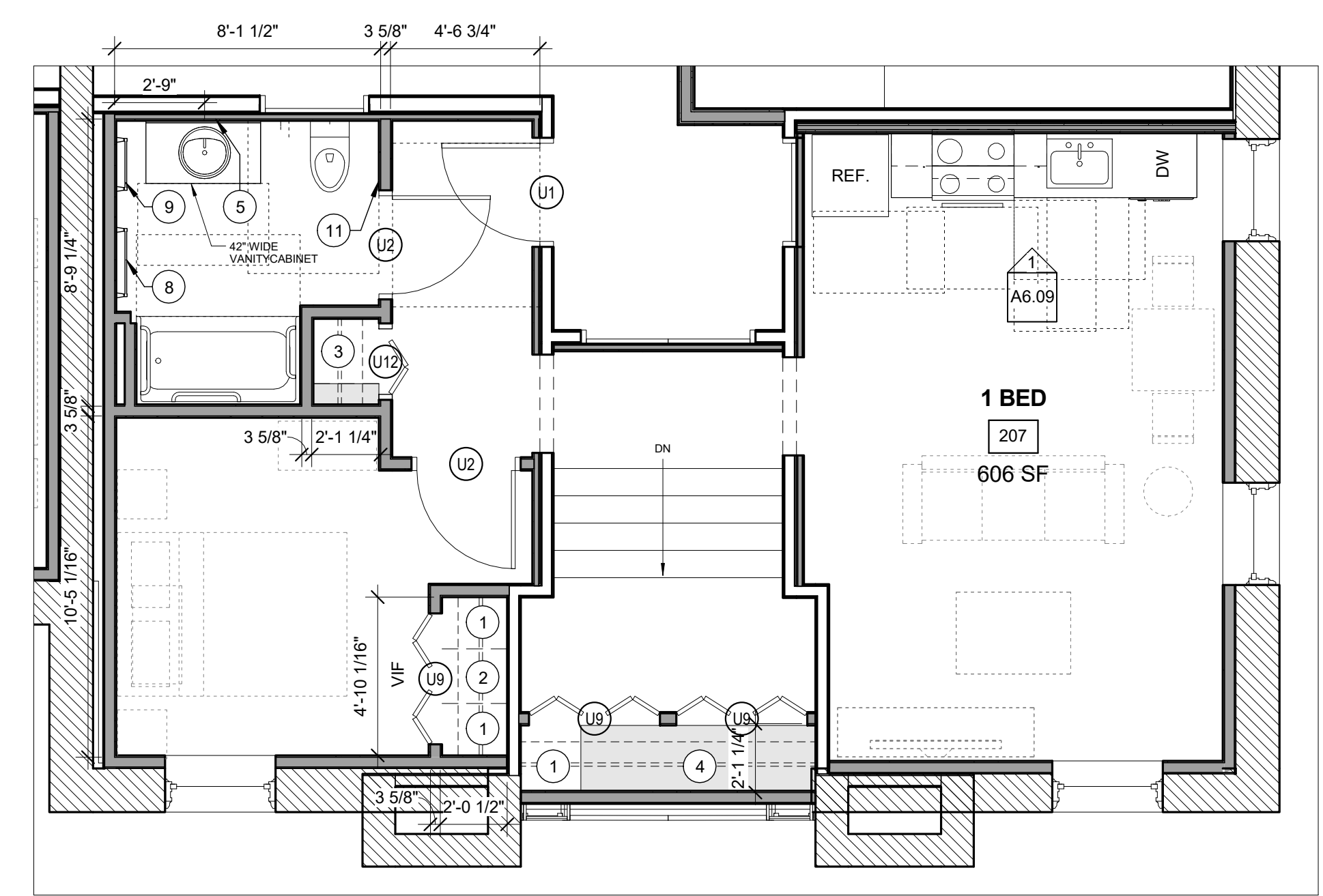
6 | UNIT 208
1/4" = 1'-0"

ONE BEDROOM - ANSI 117.1 TYPE B
GENERAL STORAGE = 119.0 CU. FT.

- TYPICAL UNIT STORAGE & BATHROOM ACCESSORIES LEGEND**
- TYPICAL UNIT BEDROOM CLOSET**
2'-0" DEEP x 5'-0" WIDE BY 8'-0" HIGH
 - EFFICIENCY UNIT BEDROOM CLOSET**
2'-0" DEEP x 3'-0" WIDE BY 8'-0" HIGH
 - LINEN STORAGE CLOSET**
TYPE B UNITS = 1'-4" DEEP x 1'-8"(MIN) WIDE.
ACCESSIBLE UNITS = 1'-8" DEEP x 1'-8"(MIN) WIDE.
PROVIDE WITH (4) SHELVES SPACED AS SHOWN ON DTL 1/A6.30. YIELDS 10 SF MINIMUM OF SHELVING AREA.
 - COAT CLOSET**
(1) 2'-0" DEEP x 2'-0" DEEP BY 8'-0" HIGH.
 - GENERAL STORAGE**
TYPICAL FINISHED CEILING HEIGHT IS 8'-0". EACH LINEAR FOOT OF GENERAL STORAGE CLOSET YIELDS 16 CUBIC FEET OF STORAGE. TOTAL CUBIC FEET HAS BEEN INDICATED ON EACH UNIT AS MEETING OR EXCEEDING 100 CUBIC FEET FOR 1 BEDROOM UNITS, 50 CUBIC FEET FOR EFFICIENCIES. SEE CLOSET AREA, SHOWN IN LIGHT GREY.
 - SURFACE MOUNTED MEDICINE CABINET**
REFER TO SPECIFICATIONS
 - NOT USED**
 - NOT USED**
 - 24" TOWEL BAR**
 - 18" TOWEL BAR**
 - TAYMOR 01-9404 TOWEL RING**
 - TOILET PAPER HOLDER**
= WALL WHERE SHOWER CONTROLS & SHOWER HEAD MUST BE LOCATED
- NOTE:** VANITY CABINET WIDTHS ARE LISTED - VANITY TOPS MUST BE 1" WIDER TO OVERHANG 1/2" EACH SIDE

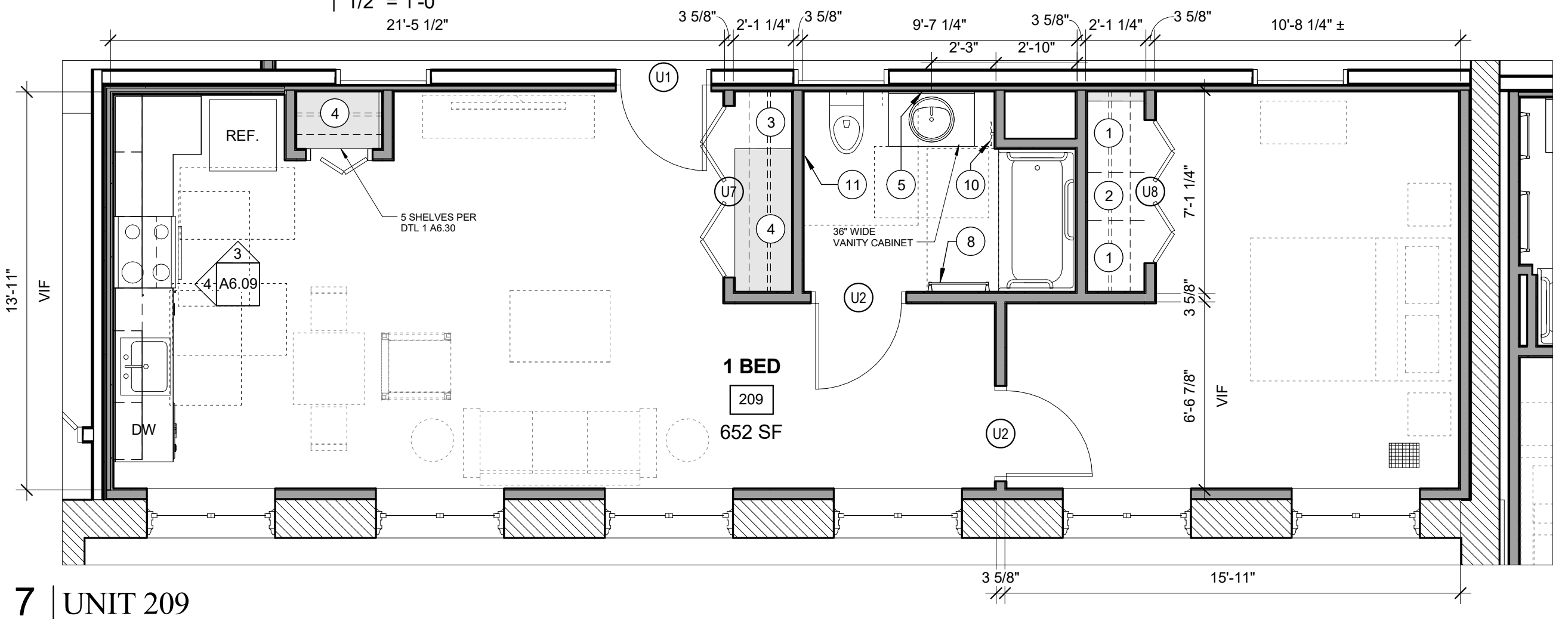


1 | UNIT 207 KITCHEN ELEVATION
1/2" = 1'-0"



5 | UNIT 207
1/4" = 1'-0"

ONE BEDROOM - ANSI 117.1 TYPE B
GENERAL STORAGE = 124.8 CU. FT.



7 | UNIT 209
1/4" = 1'-0"

ONE BEDROOM - ANSI 117.1 TYPE B
GENERAL STORAGE = 133.3 CU. FT.