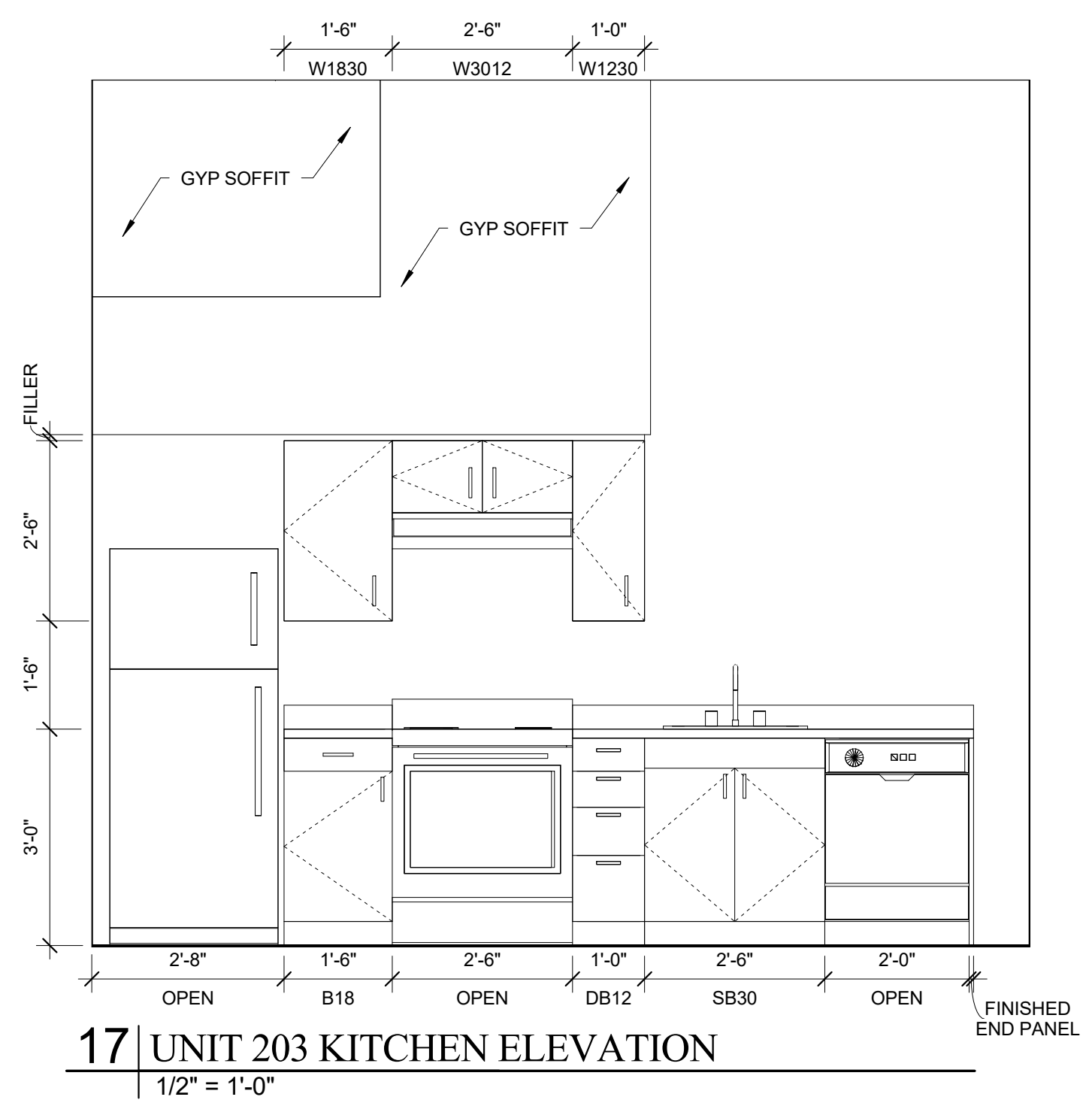
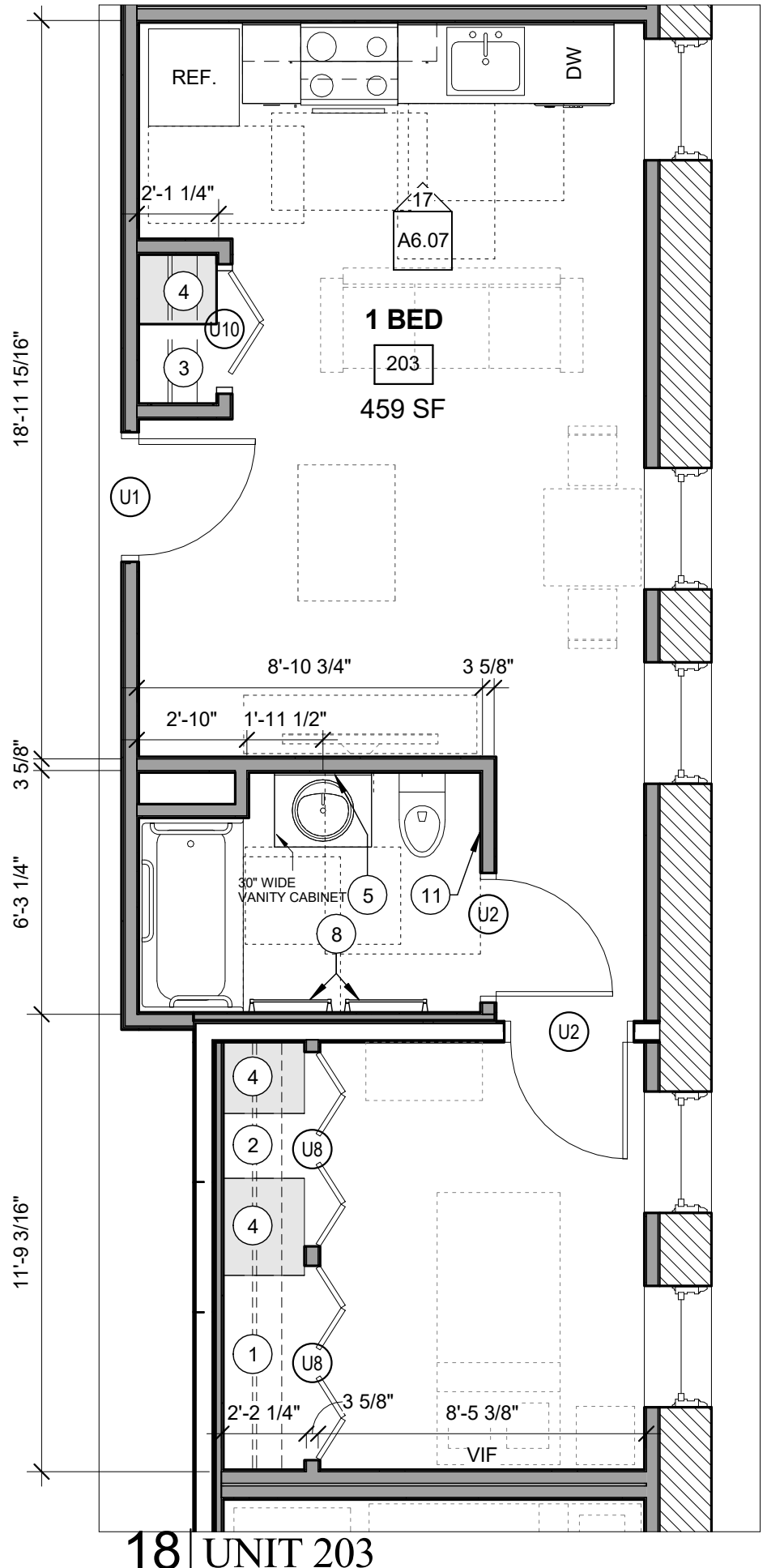


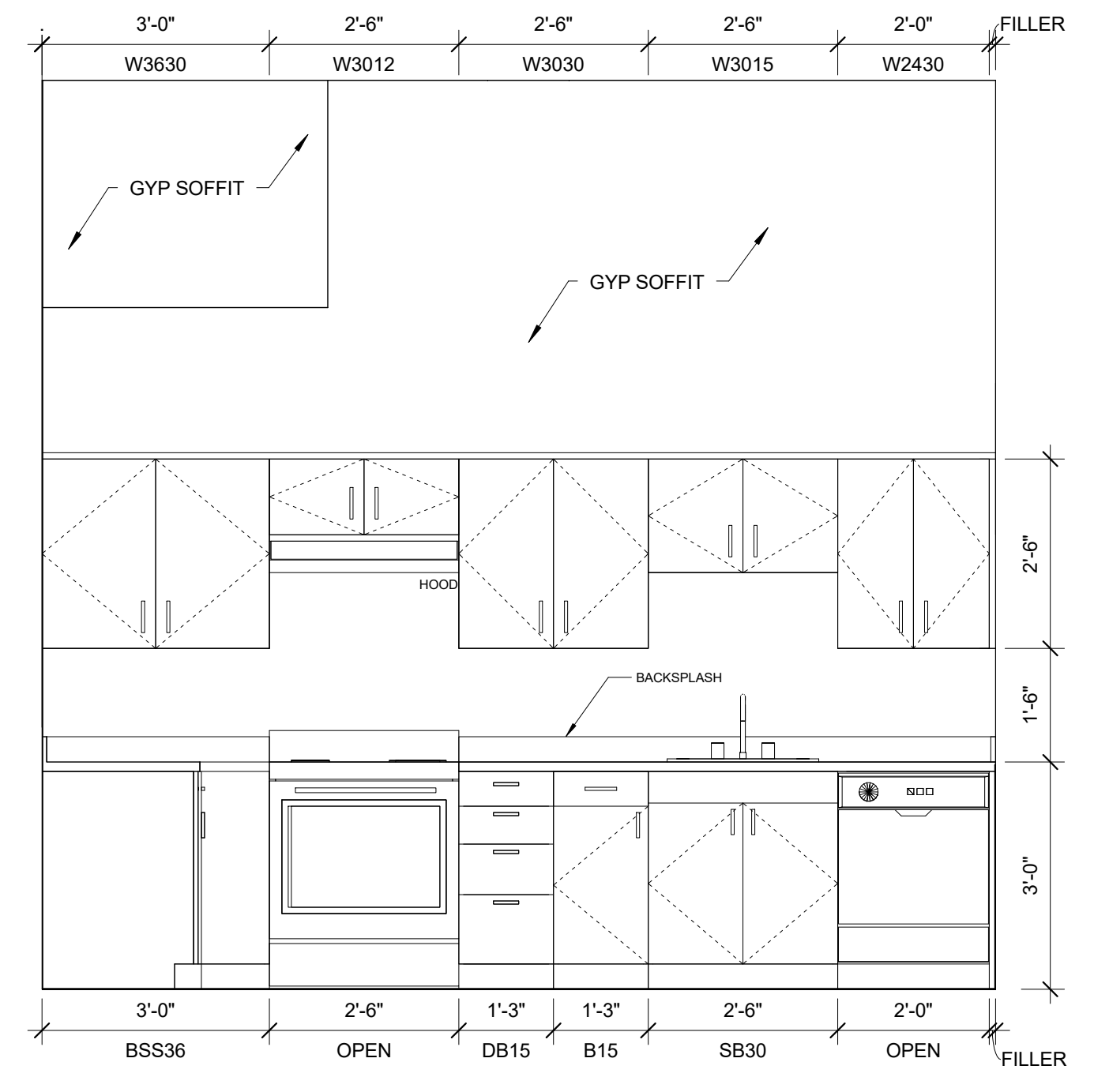
- TYPICAL UNIT STORAGE & BATHROOM ACCESSORIES LEGEND**
- TYPICAL UNIT BEDROOM CLOSET**
2'-0" DEEP x 5'-0" WIDE BY 8'-0" HIGH
 - EFFICIENCY UNIT BEDROOM CLOSET**
2'-0" DEEP x 3'-0" WIDE BY 8'-0" HIGH
 - LINEN STORAGE CLOSET**
TYPE B UNITS = 1'-6" DEEP X 1'-8"(MIN) WIDE.
ACCESSIBLE UNITS = 1'-8" DEEP X 1'-8"(MIN) WIDE.
PROVIDE WITH (4) SHELVES SPACED AS SHOWN ON DTL 1/A6.30. YIELDS 10 SF MINIMUM OF SHELVING AREA.
 - COAT CLOSET**
(1) 2'-0" DEEP x 2'-0" DEEP BY 8'-0" HIGH.
 - GENERAL STORAGE**
TYPICAL FINISHED CEILING HEIGHT IS 8'-0". EACH LINEAR FOOT OF GENERAL STORAGE CLOSET YIELDS 16 CUBIC FEET OF STORAGE. TOTAL CUBIC FEET HAS BEEN INDICATED ON EACH UNIT AS MEETING OR EXCEEDING 100 CUBIC FEET FOR 1 BEDROOM UNITS, 50 CUBIC FEET FOR EFFICIENCIES. SEE CLOSET AREA, SHOWN IN LIGHT GREY.
 - SURFACE MOUNTED MEDICINE CABINET**
REFER TO SPECIFICATIONS
 - NOT USED**
 - NOT USED**
 - 24" TOWEL BAR**
 - 18" TOWEL BAR**
 - TAYMOR 01-9404 TOWEL RING**
 - TOILET PAPER HOLDER**
- = WALL WHERE SHOWER CONTROLS & SHOWER HEAD MUST BE LOCATED
- NOTE:** VANITY CABINET WIDTHS ARE LISTED - VANITY TOPS MUST BE 1" WIDER TO OVERHANG 1/2" EACH SIDE



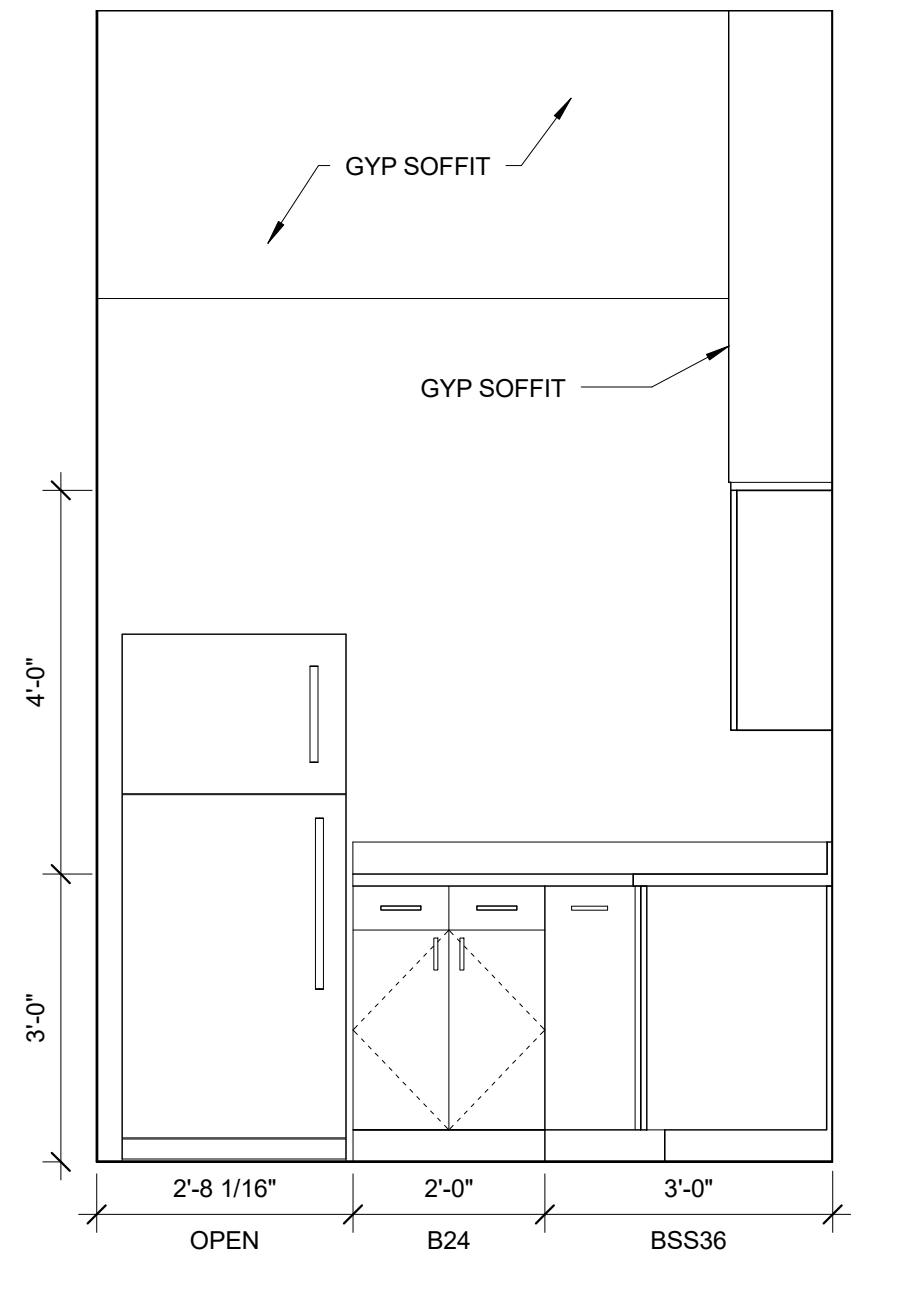
17 UNIT 203 KITCHEN ELEVATION
1/2" = 1'-0"



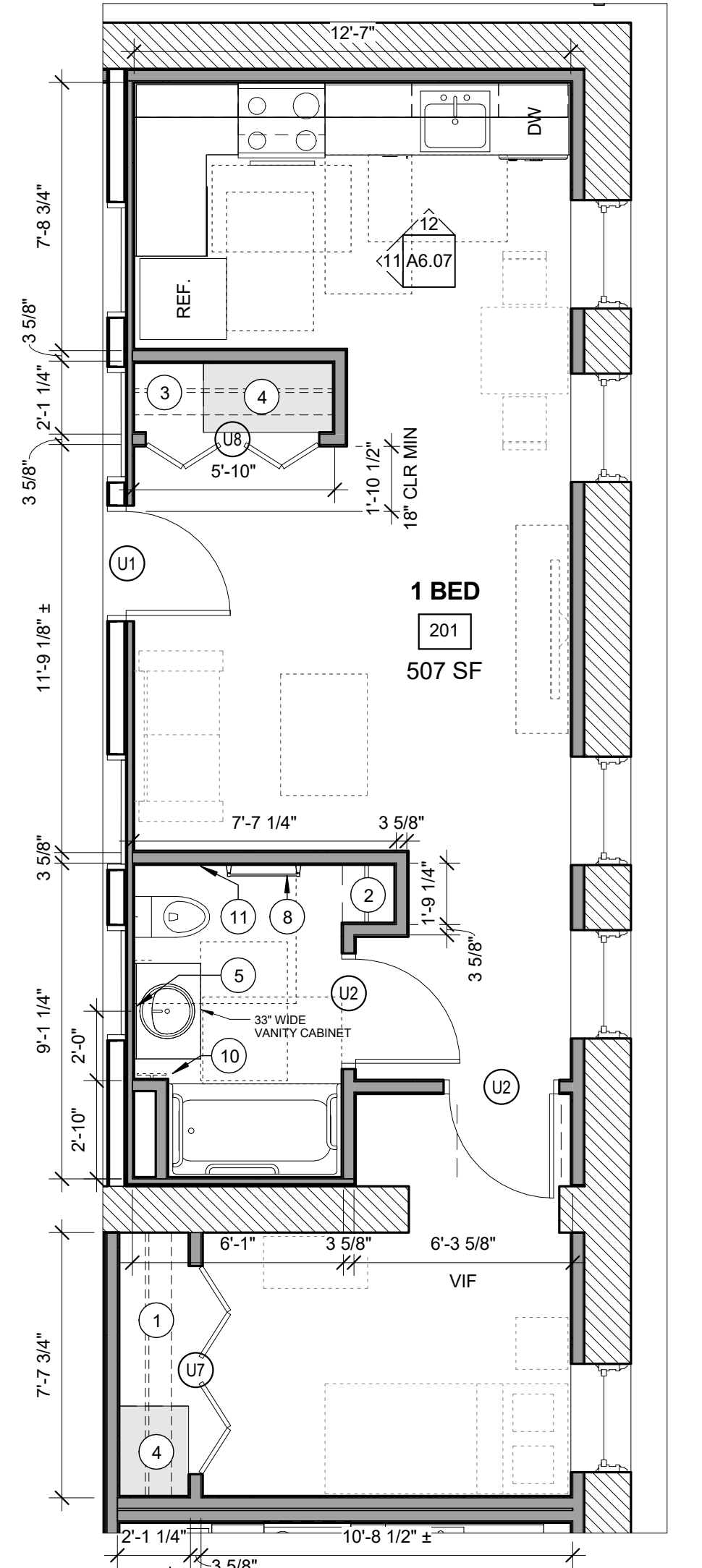
18 UNIT 203
1/4" = 1'-0"
ONE BEDROOM - ANSI 117.1 TYPE B UNIT
GENERAL STORAGE 100.9 CU. FT.



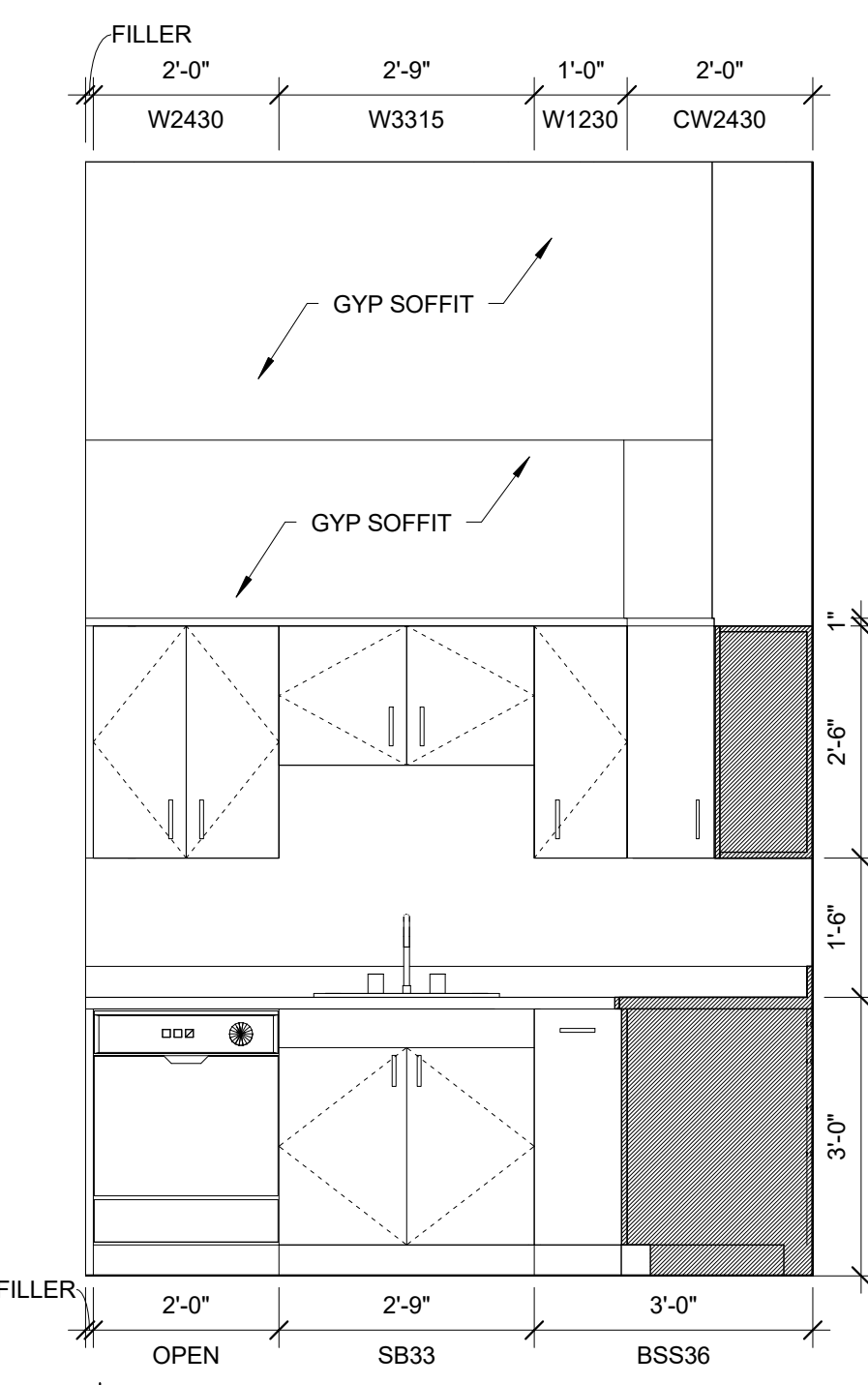
12 UNIT 201 KITCHEN ELEVATION
1/2" = 1'-0"



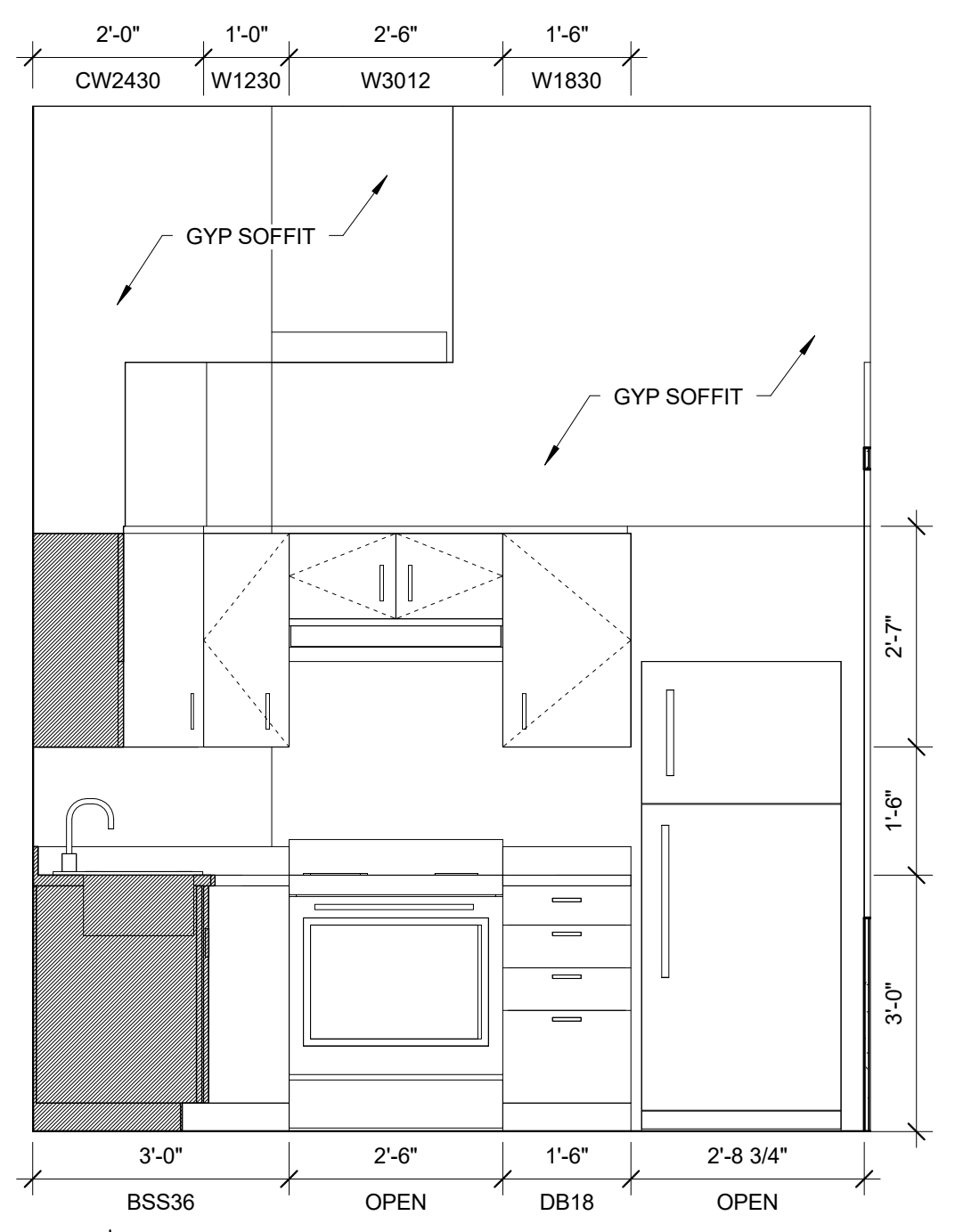
11 UNIT 201 KITCHEN ELEVATION
1/2" = 1'-0"



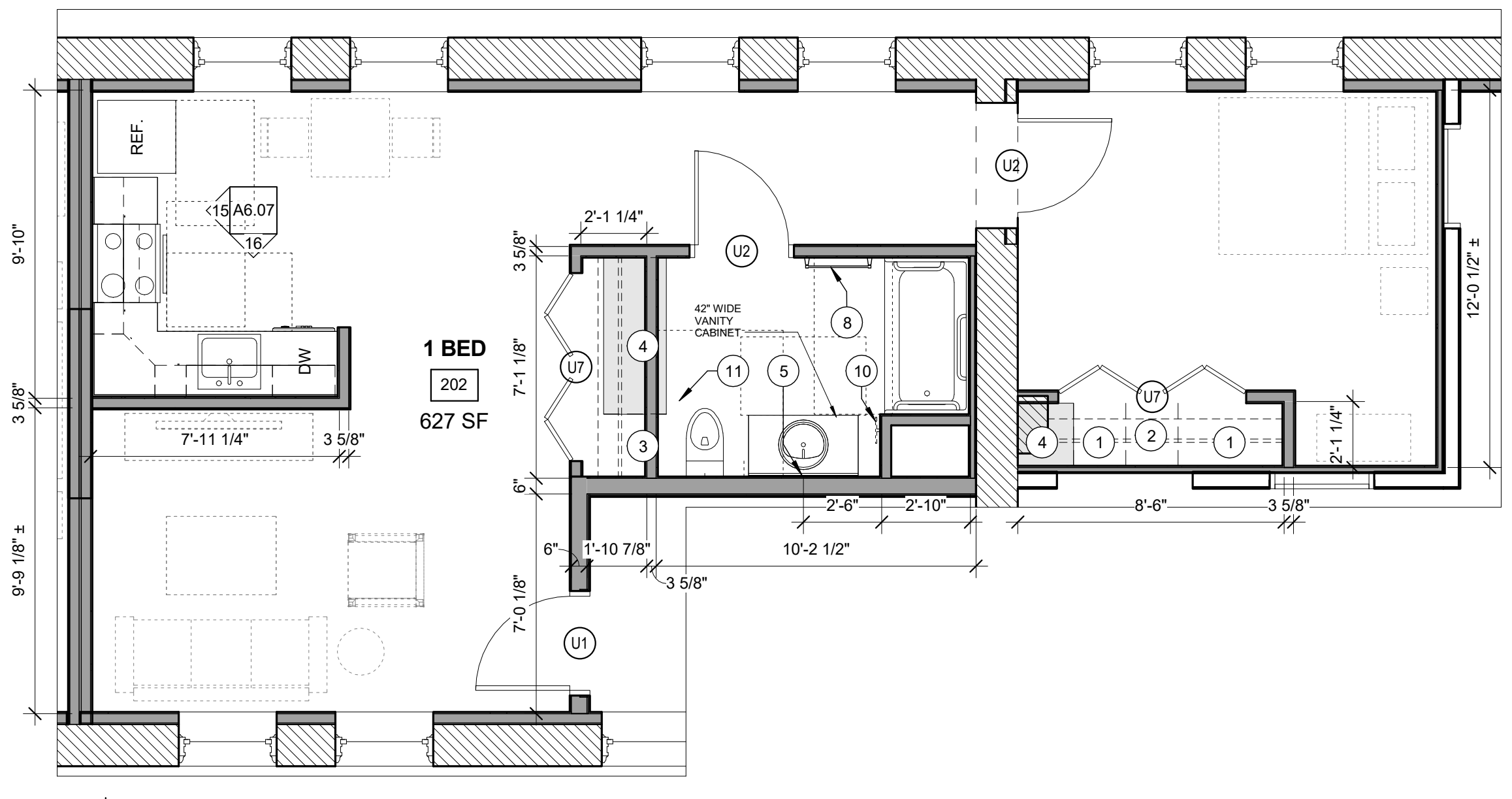
13 UNIT 201
1/4" = 1'-0"
ONE BEDROOM - ANSI 117.1 TYPE B UNIT
GENERAL STORAGE = 101.2 CU. FT.



16 UNIT 202 KITCHEN ELEVATION
1/2" = 1'-0"



15 UNIT 202 KITCHEN ELEVATION
1/2" = 1'-0"



14 UNIT 202
1/4" = 1'-0"
ONE BEDROOM - ANSI 117.1 TYPE B
GENERAL STORAGE = 108.5 CU. FT.