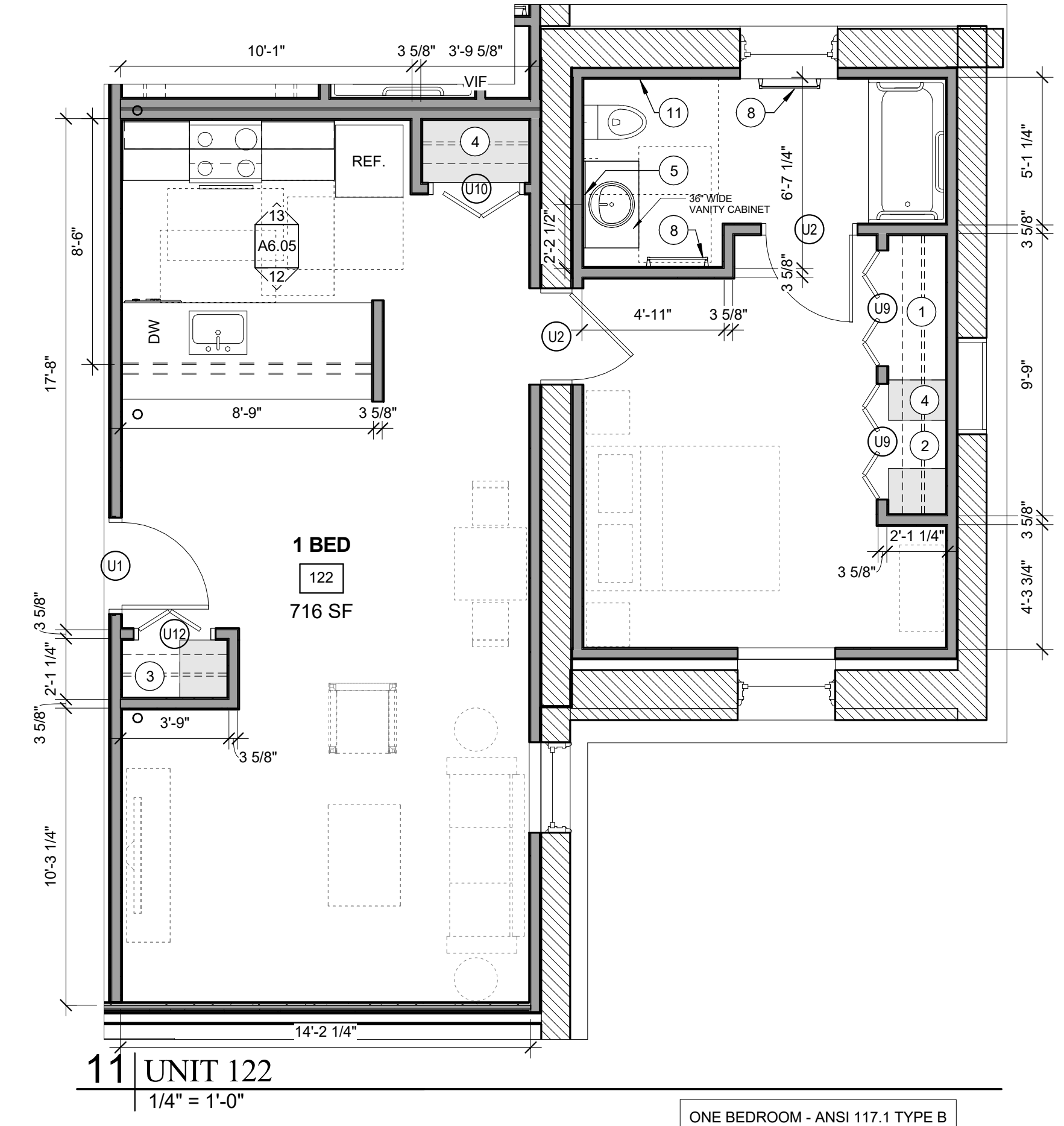
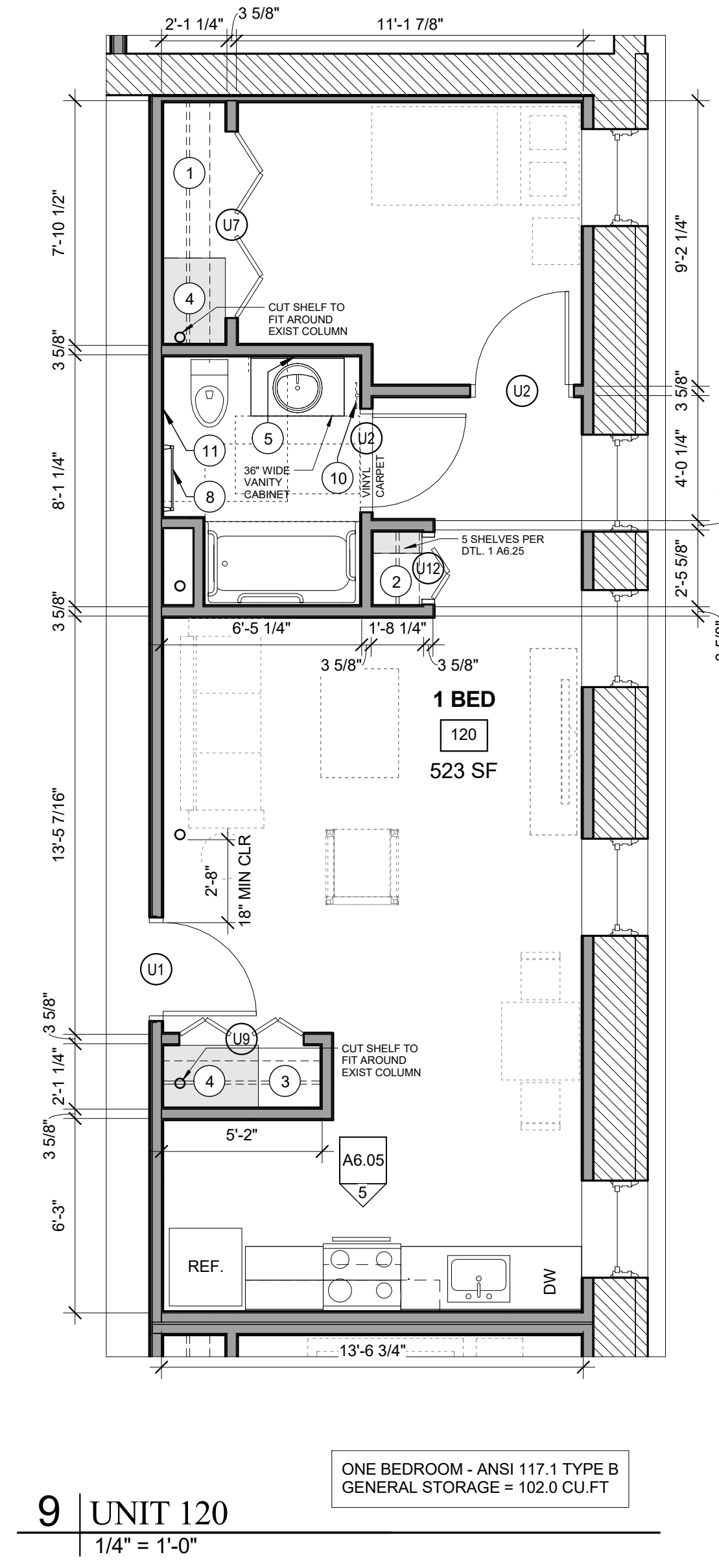
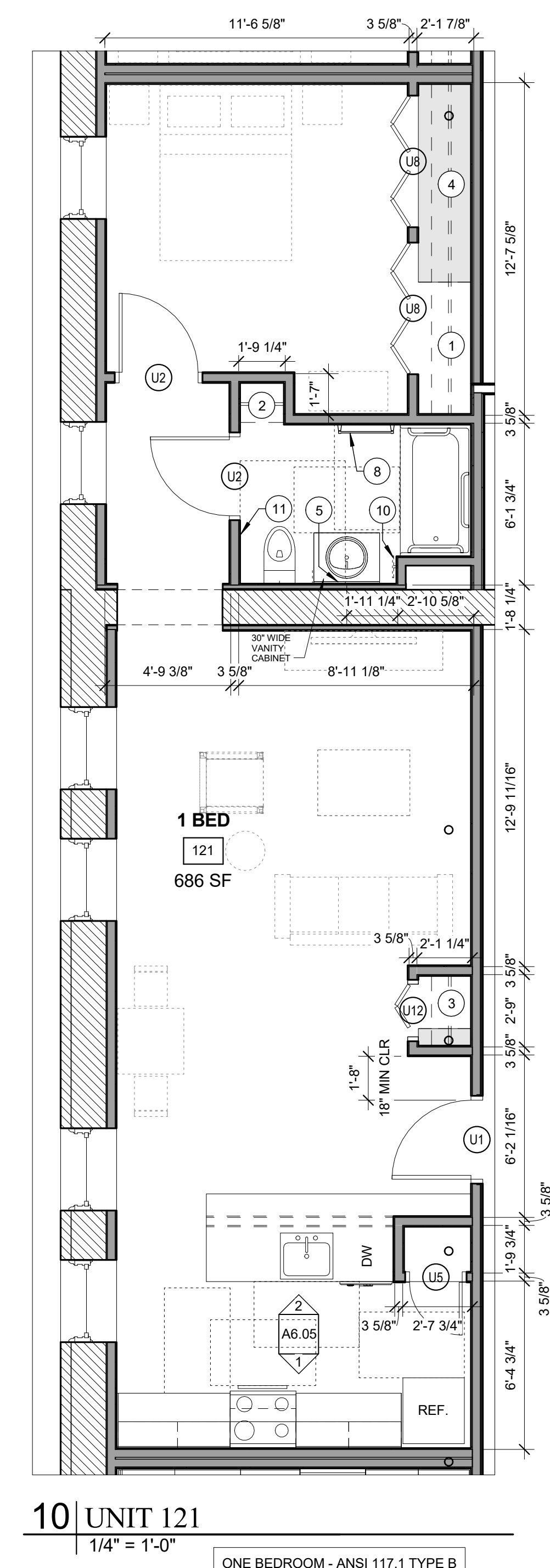
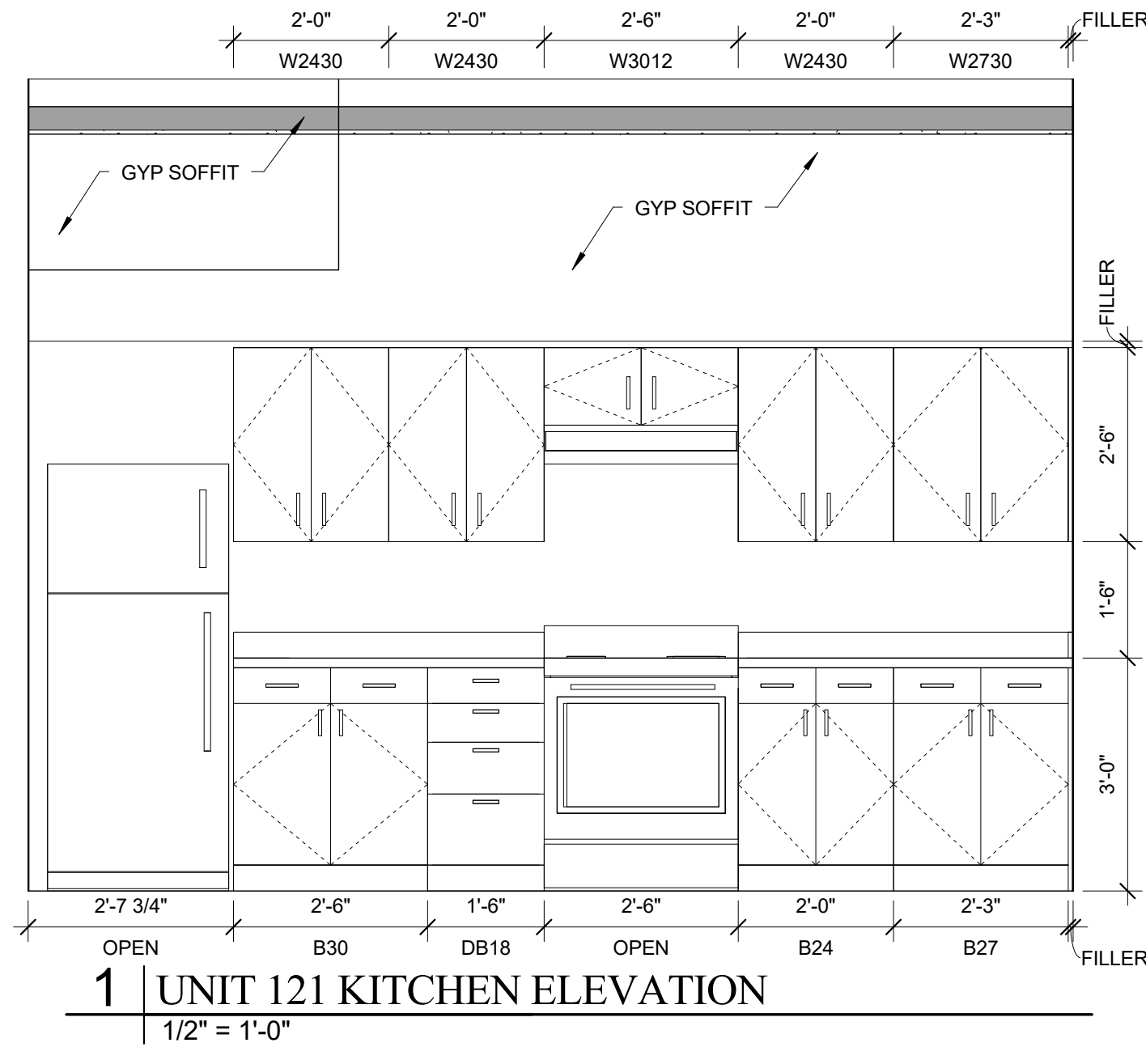
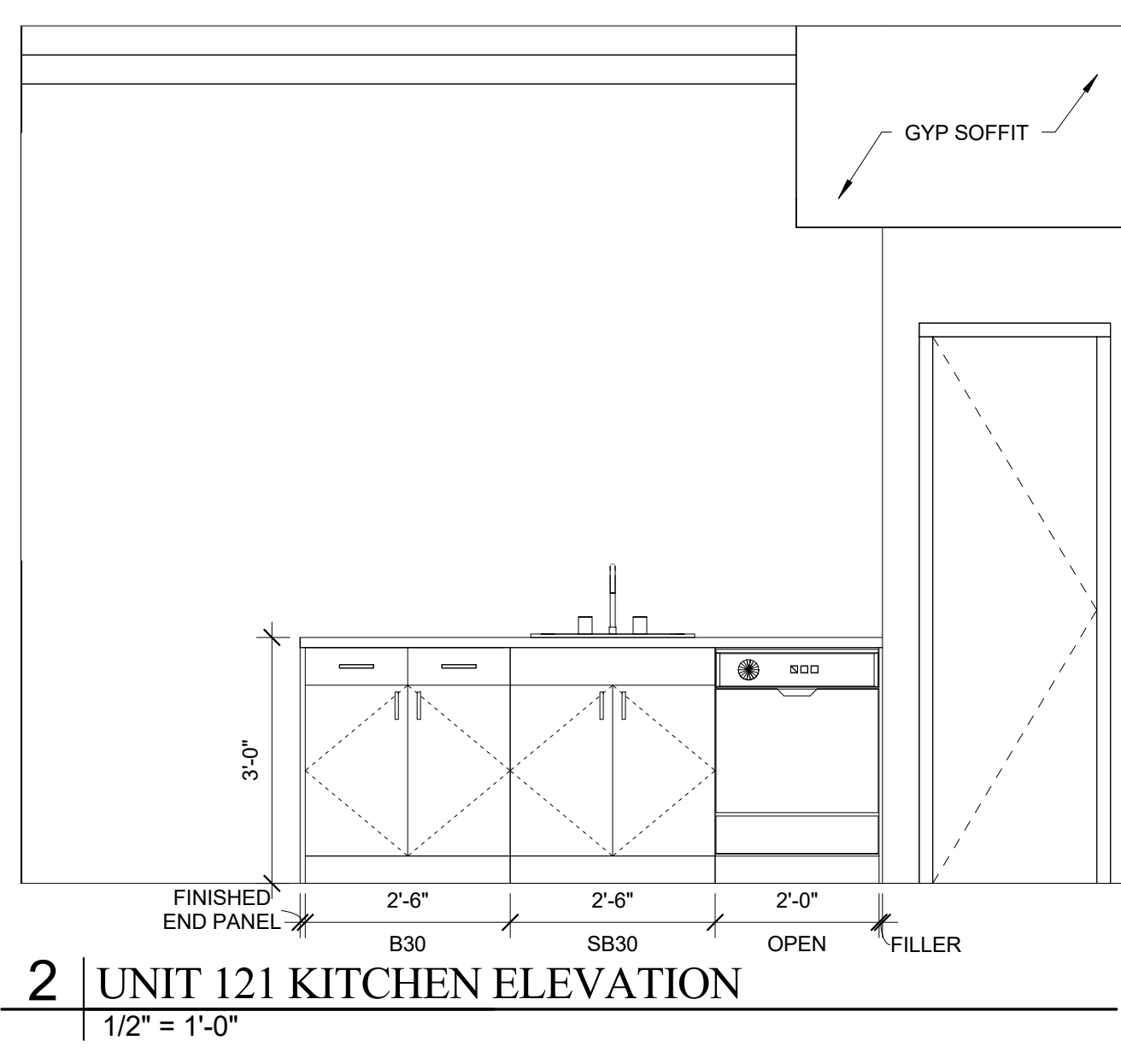
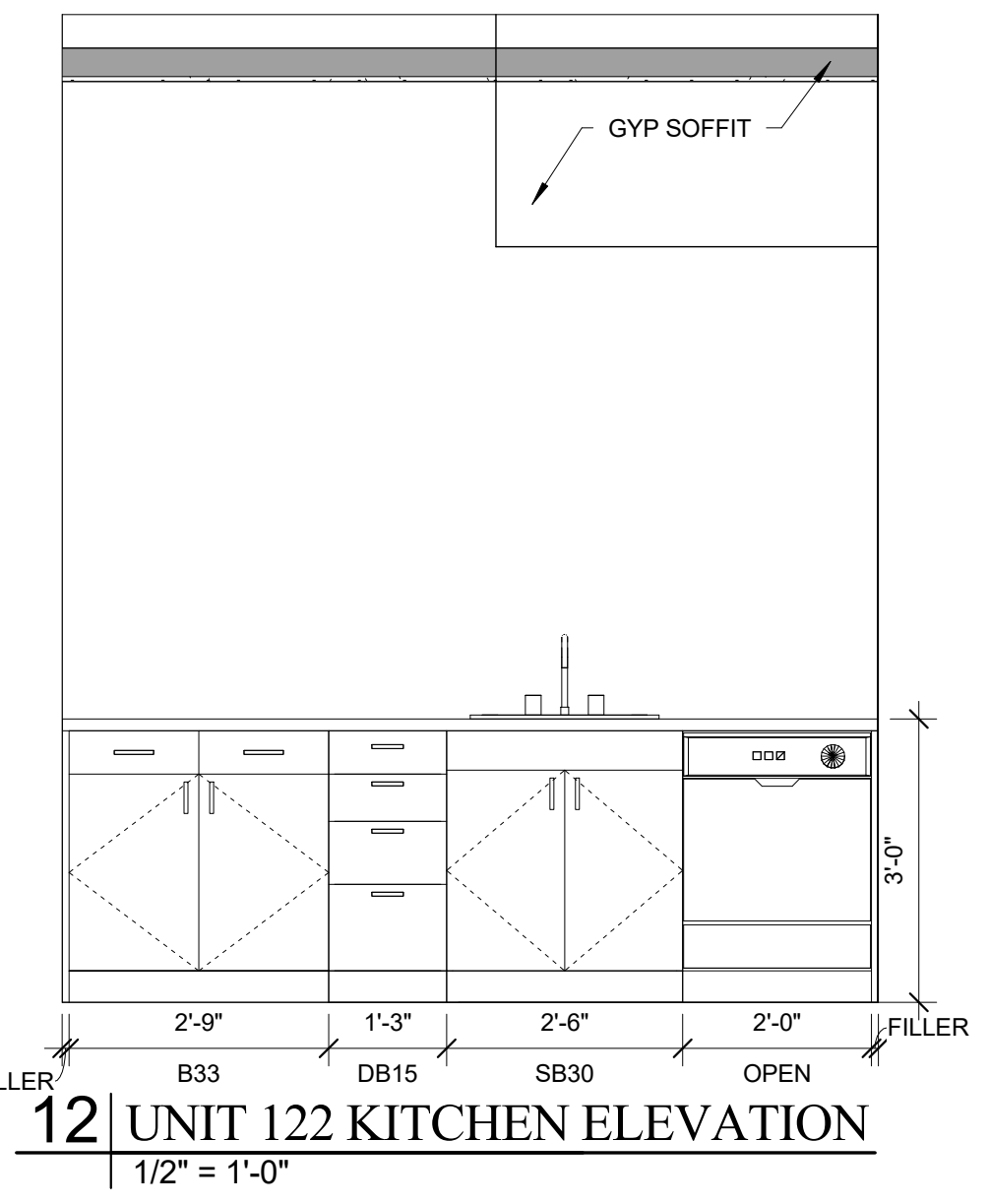
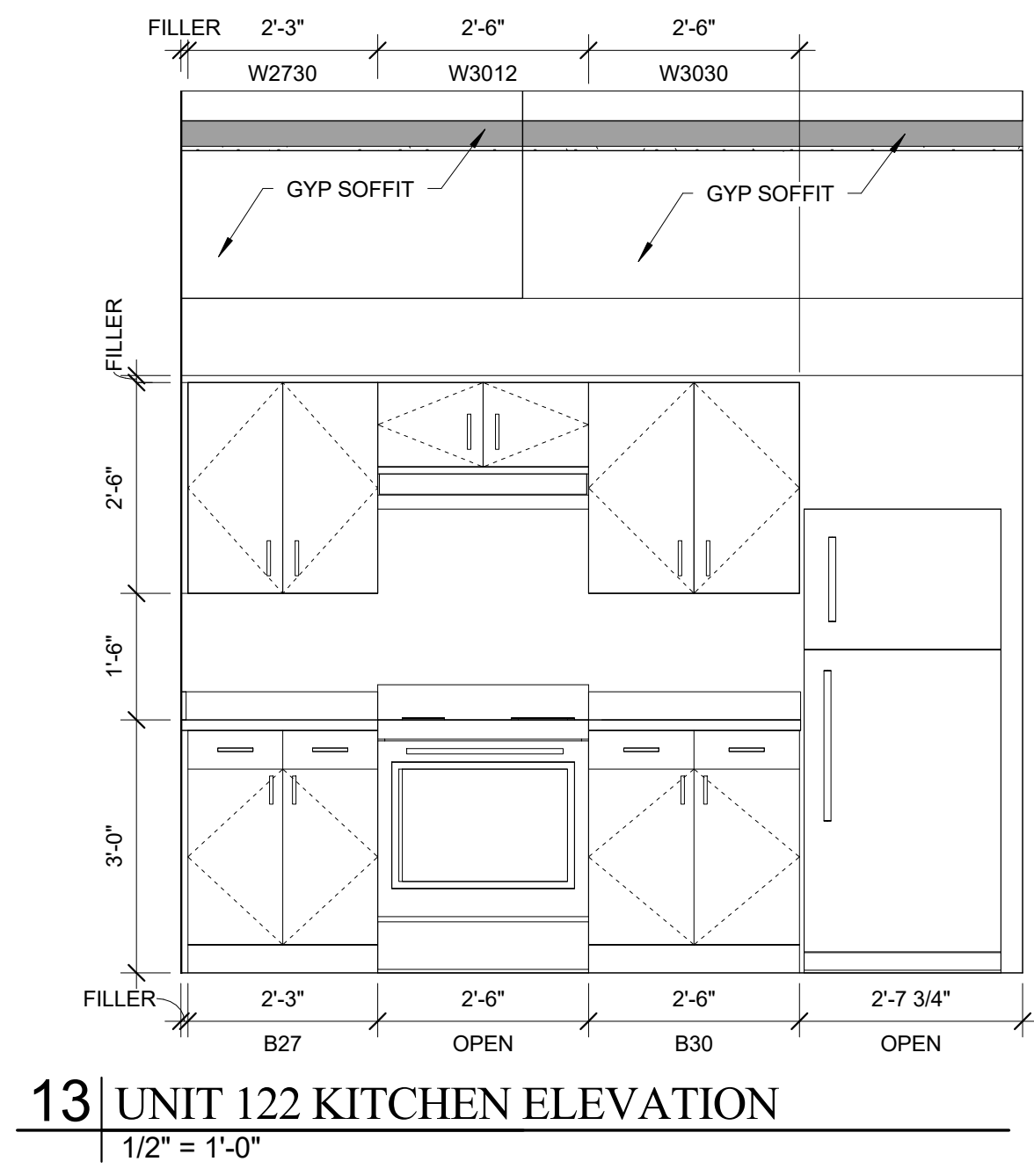
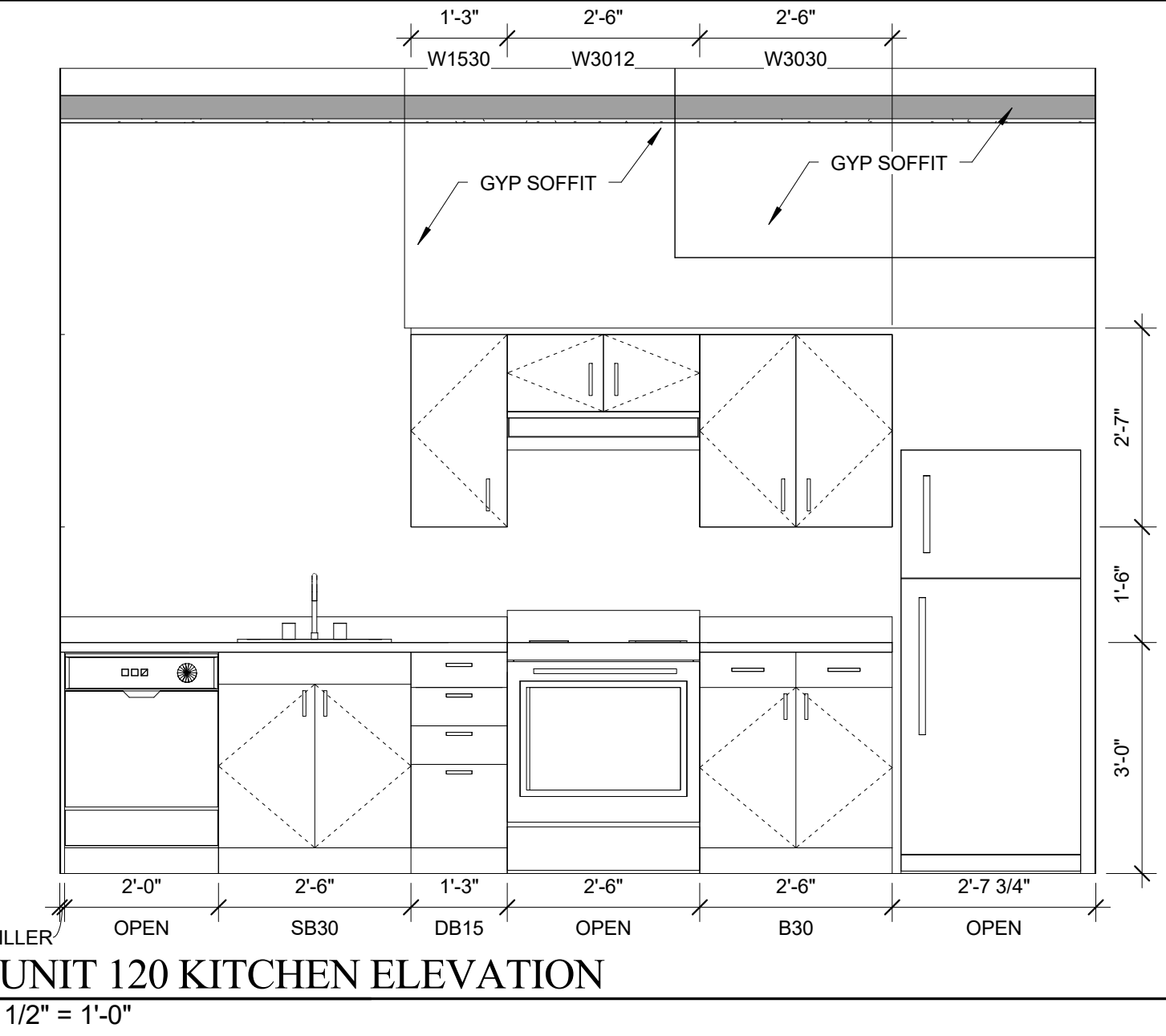


TYPICAL UNIT STORAGE & BATHROOM ACCESSORIES LEGEND

- TYPICAL UNIT BEDROOM CLOSET**
2'-0" DEEP X 5'-0" WIDE BY 8'-0" HIGH
- EFFICIENCY UNIT BEDROOM CLOSET**
2'-0" DEEP X 3'-0" WIDE BY 8'-0" HIGH
- LINEN STORAGE CLOSET**
TYPE B UNITS = 1'-6" DEEP X 1'-8" (MIN) WIDE
ACCESSIBLE UNITS = 1'-8" DEEP X 1'-8" (MIN) WIDE
PROVIDE WITH (4) SHELVES SPACED AS SHOWN ON DTL 1/A6.30. YIELDS 10 SF MINIMUM OF SHELVING AREA.
- COAT CLOSET**
(1) 2'-0" DEEP X 2'-0" DEEP BY 8'-0" HIGH.
- GENERAL STORAGE**
TYPICAL FINISHED CEILING HEIGHT IS 8'-0". EACH LINEAR FOOT OF GENERAL STORAGE CLOSET YIELDS 16 CUBIC FEET OF STORAGE. TOTAL CUBIC FEET HAS BEEN INDICATED ON EACH UNIT AS MEETING OR EXCEEDING 100 CUBIC FEET FOR 1 BEDROOM UNITS, 50 CUBIC FEET FOR EFFICIENCIES. SEE CLOSET AREA, SHOWN IN LIGHT GREY.
- SURFACE MOUNTED MEDICINE CABINET**
REFER TO SPECIFICATIONS
- NOT USED**
- NOT USED**
- 24" TOWEL BAR**
- 18" TOWEL BAR**
- TAYMOR 01-9404 TOWEL RING**
- TOILET PAPER HOLDER**
= WALL WHERE SHOWER CONTROLS & SHOWER HEAD MUST BE LOCATED

NOTE: VANITY CABINET WIDTHS ARE LISTED - VANITY TOPS MUST BE 1" WIDER TO OVERHANG 1/2" EACH SIDE



ONE BEDROOM - ANSI 117.1 TYPE B
GENERAL STORAGE = 138.0 CU.FT

ONE BEDROOM - ANSI 117.1 TYPE B
GENERAL STORAGE = 130.7 CU.FT