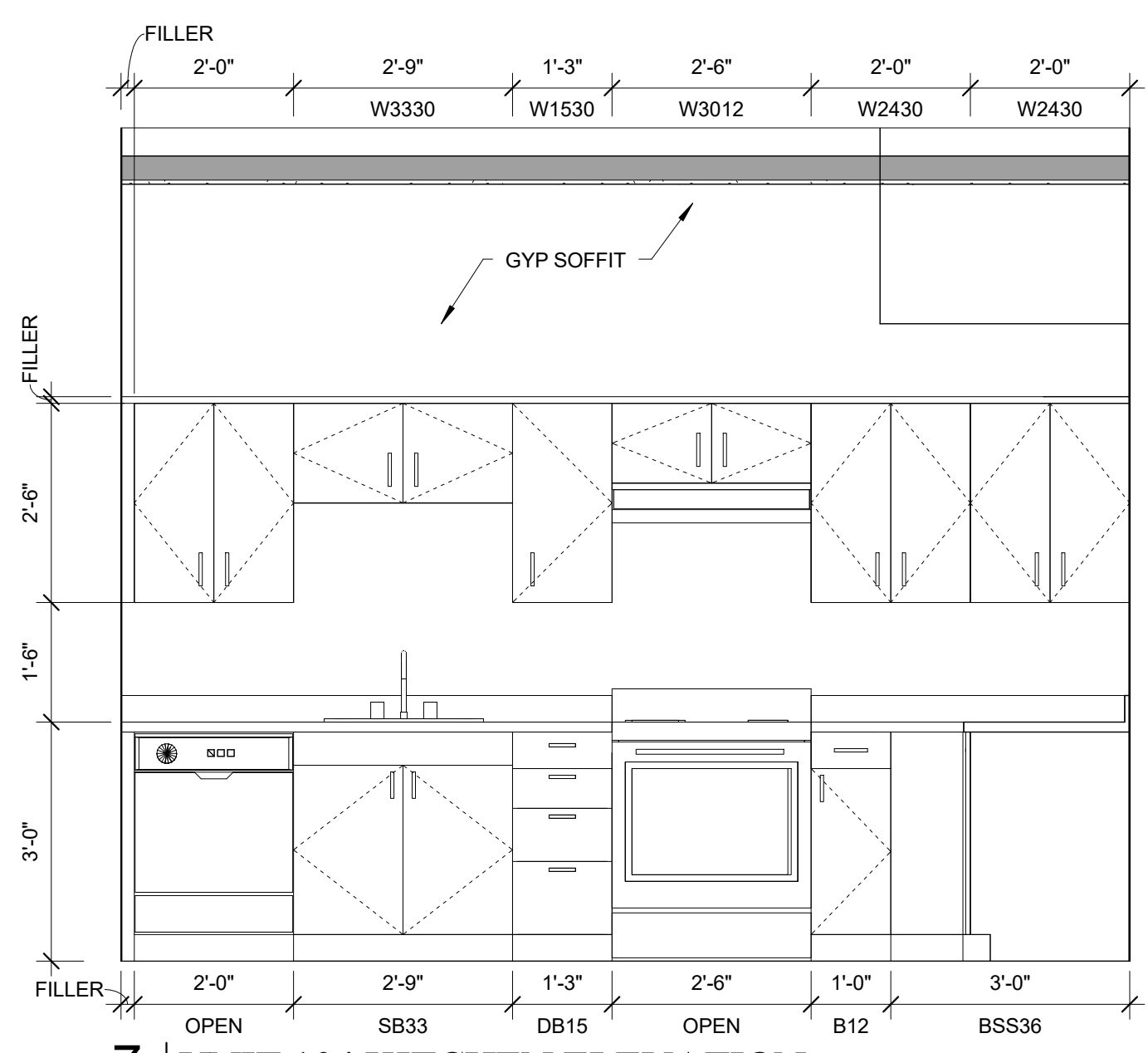
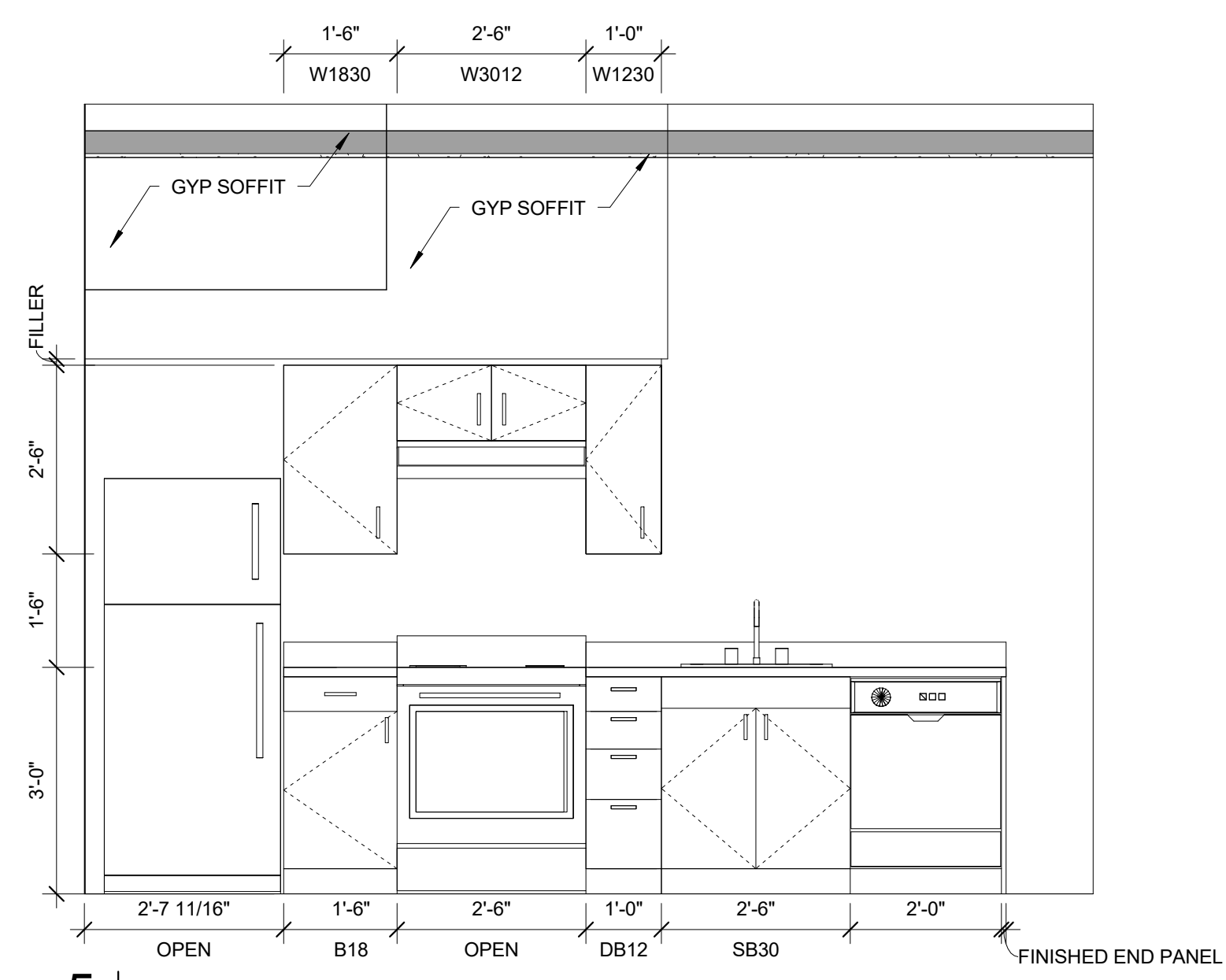


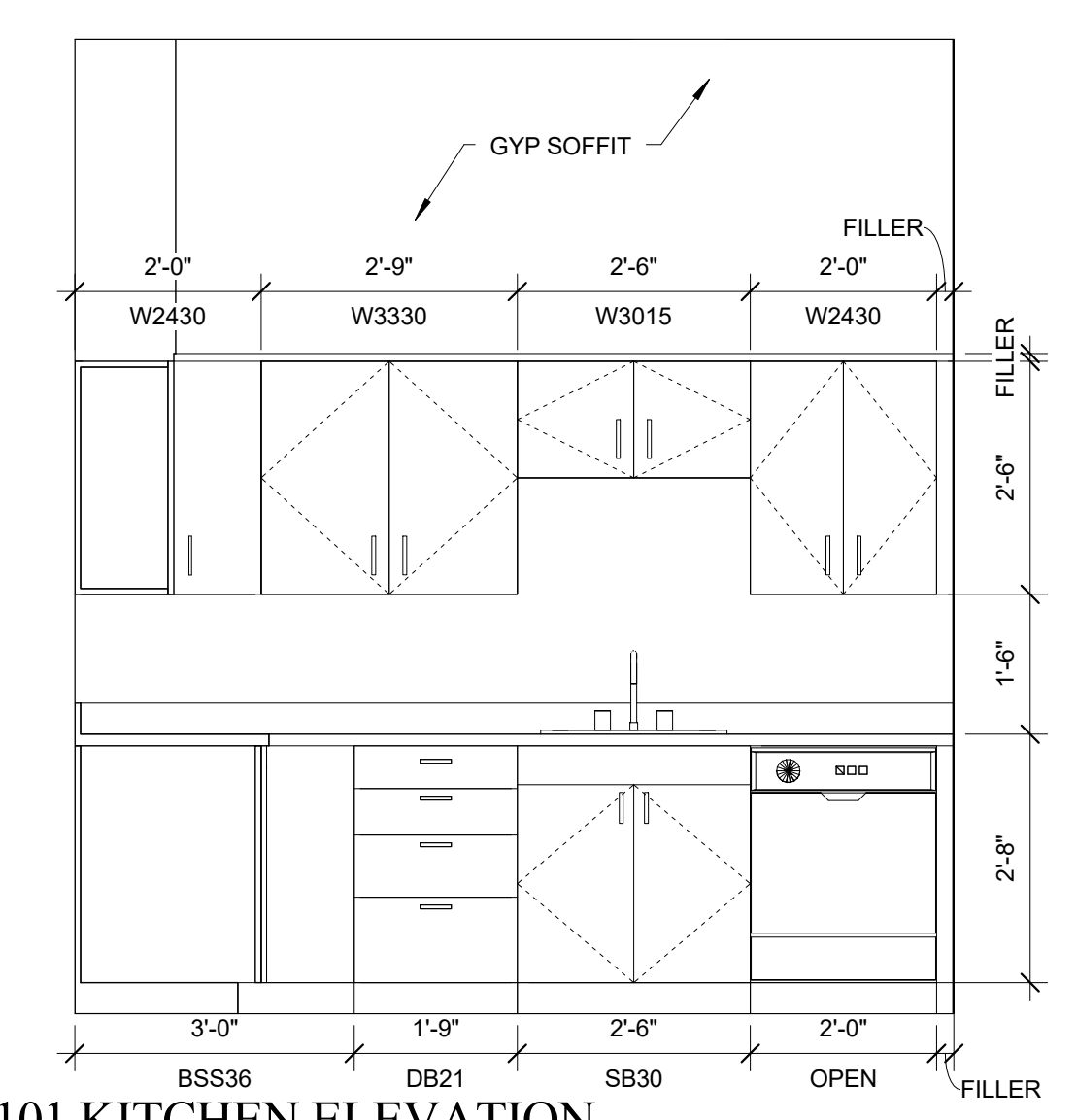
8 | UNIT 104 KITCHEN ELEVATION
1/2" = 1'-0"



7 | UNIT 104 KITCHEN ELEVATION
1/2" = 1'-0"

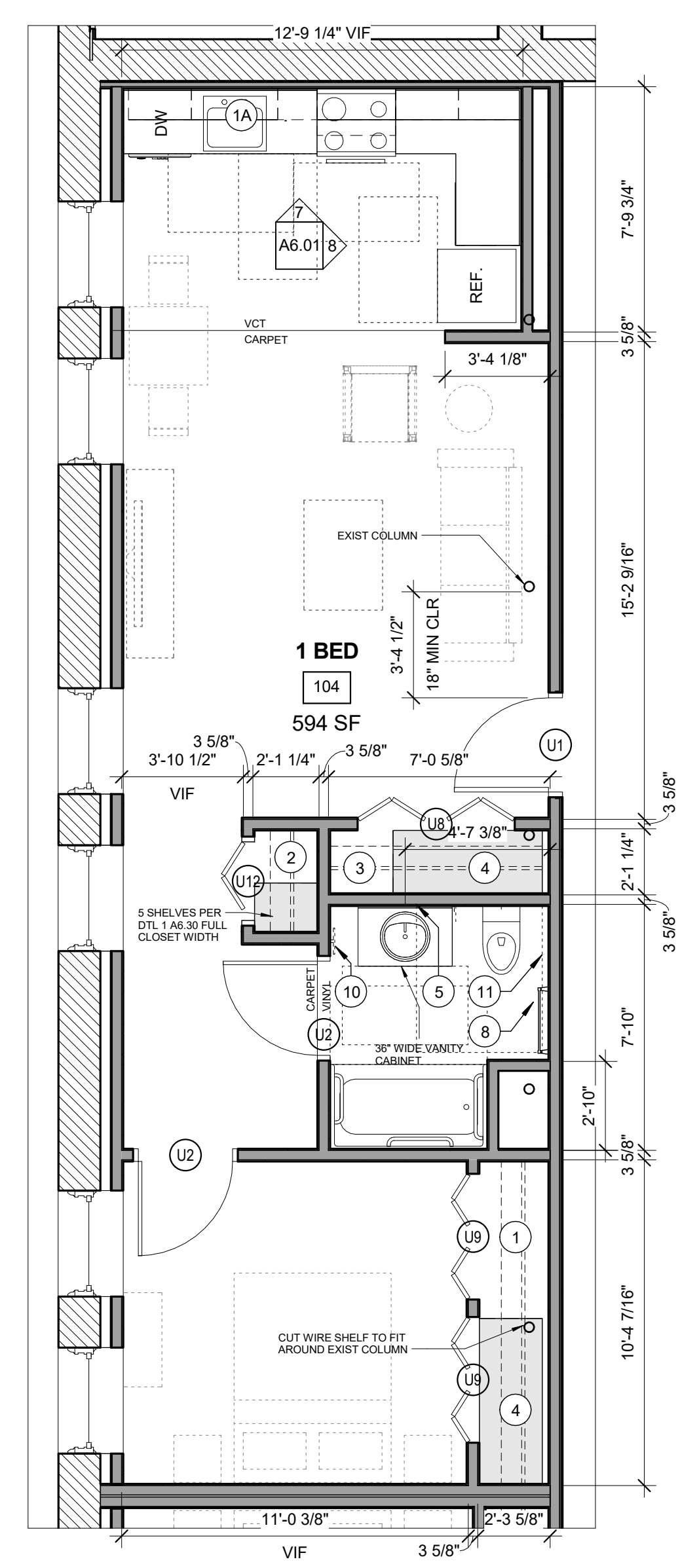


5 | UNIT 103 KITCHEN ELEVATION
1/2" = 1'-0"

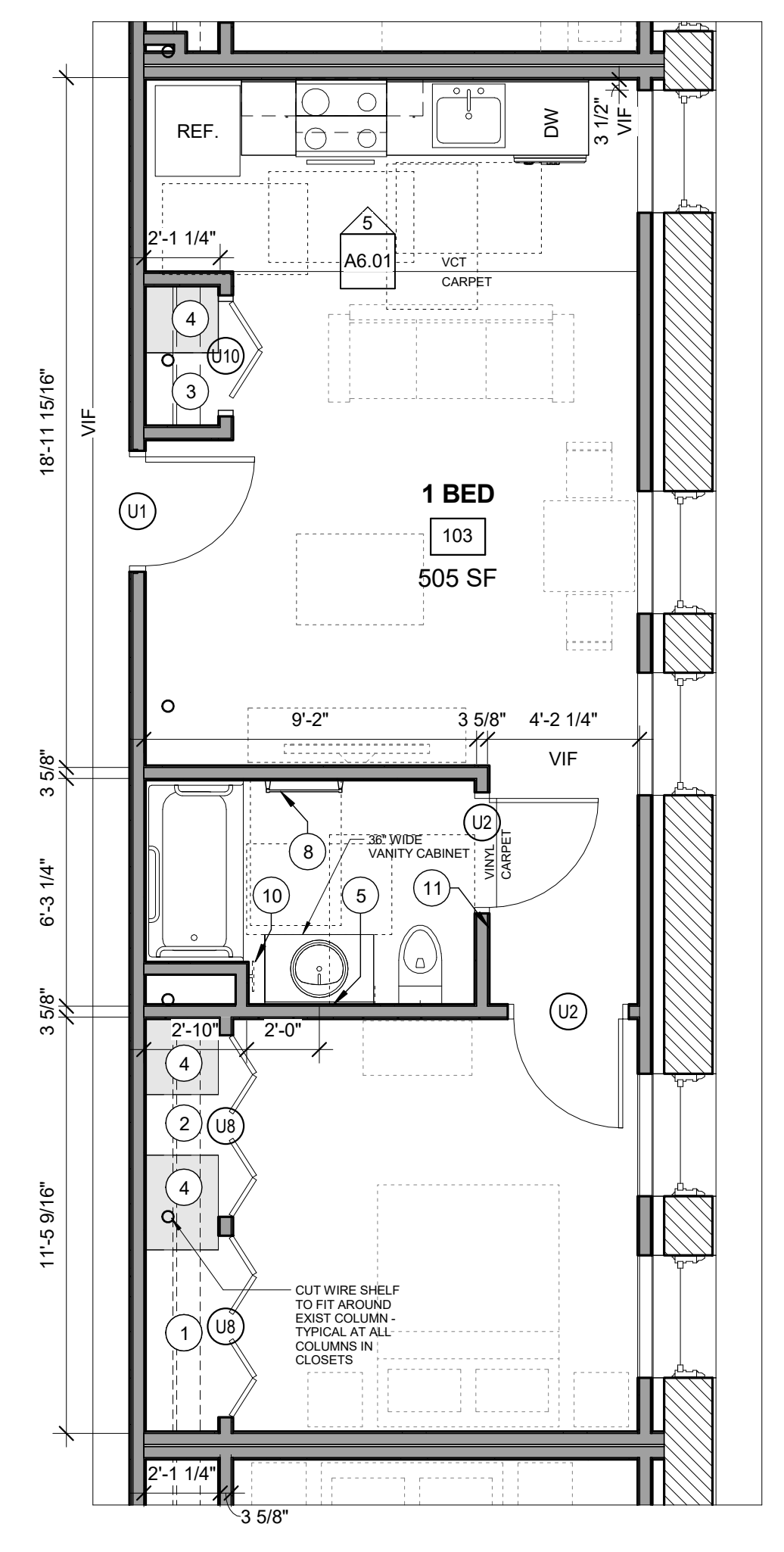


2 | UNIT 101 KITCHEN ELEVATION
1/2" = 1'-0"

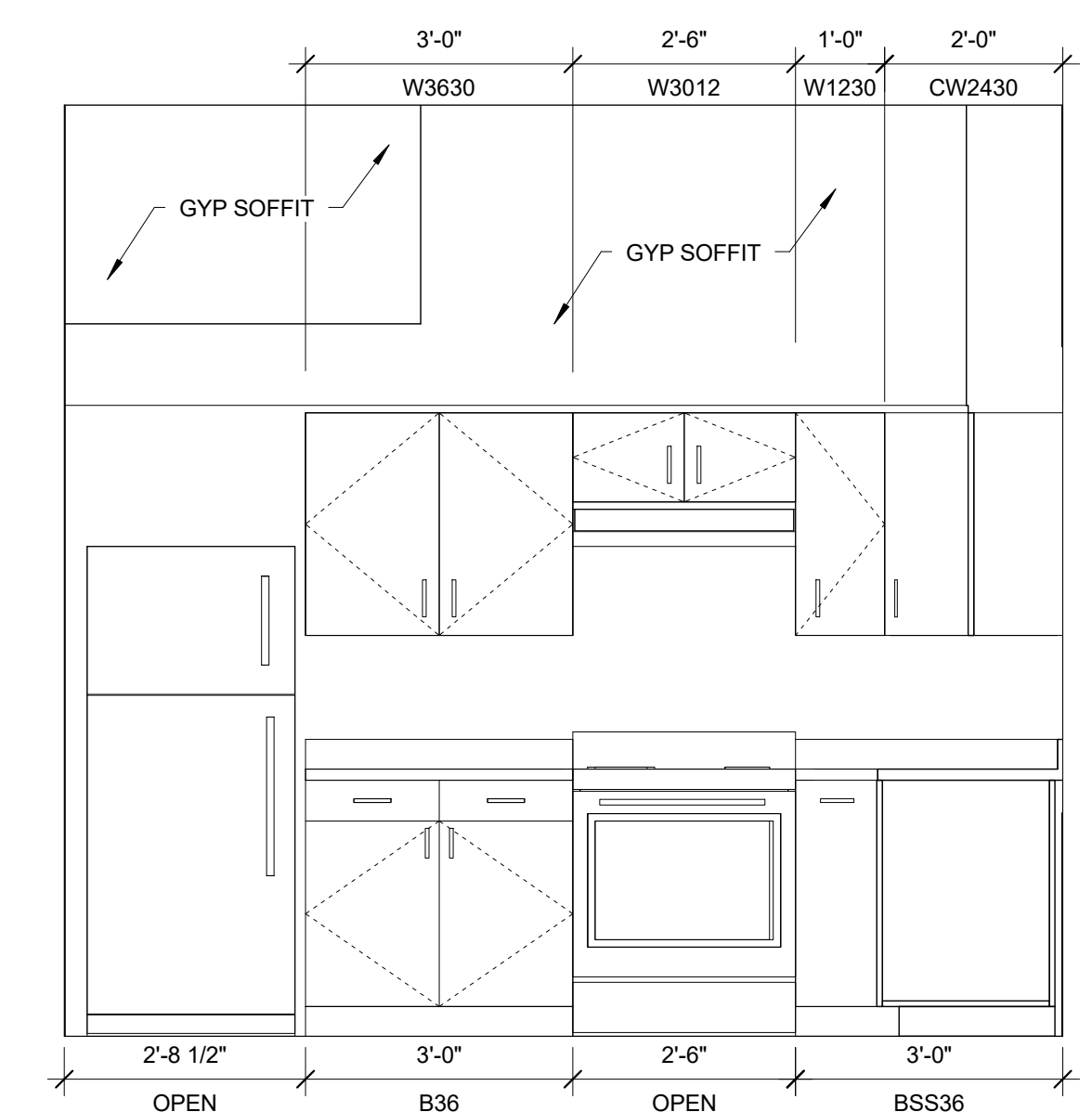
- TYPICAL UNIT STORAGE & BATHROOM ACCESSORIES LEGEND**
1. TYPICAL UNIT BEDROOM CLOSET
2'-0" DEEP x 5'-0" WIDE BY 8'-0" HIGH
 - 1A. EFFICIENCY UNIT BEDROOM CLOSET
2'-0" DEEP x 3'-0" WIDE BY 8'-0" HIGH
 2. LINEN STORAGE CLOSET
TYPE B UNITS = 1'-6" DEEP X 1'-8" (MIN) WIDE.
ACCESSIBLE UNITS = 1'-5" DEEP X 1'-8" (MIN) WIDE.
PROVIDE WITH (4) SHELVES SPACED AS SHOWN ON DTL 1/A6.30. YIELDS 10 SF MINIMUM OF SHELVING AREA.
 3. COAT CLOSET
(1) 2'-0" DEEP x 2'-0" DEEP BY 8'-0" HIGH.
 4. GENERAL STORAGE
TYPICAL FINISHED CEILING HEIGHT IS 8'-0". EACH LINEAR FOOT OF GENERAL STORAGE CLOSET YIELDS 16 CUBIC FEET OF STORAGE. TOTAL CUBIC FEET HAS BEEN INDICATED ON EACH UNIT AS MEETING OR EXCEEDING 100 CUBIC FEET FOR 1 BEDROOM UNITS, 50 CUBIC FEET FOR EFFICIENCIES. SEE CLOSET AREA. SHOWN IN LIGHT GREY.
 5. SURFACE MOUNTED MEDICINE CABINET
REFER TO SPECIFICATIONS
 6. NOT USED
 7. NOT USED
 8. 24" TOWEL BAR
 9. 18" TOWEL BAR
 10. TAYMOR 01-9404 TOWEL RING
 11. TOILET PAPER HOLDER
- = WALL WHERE SHOWER CONTROLS & SHOWER HEAD MUST BE LOCATED
- NOTE: VANITY CABINET WIDTHS ARE LISTED - VANITY TOPS MUST BE 1" WIDER TO OVERHANG 1/2" EACH SIDE



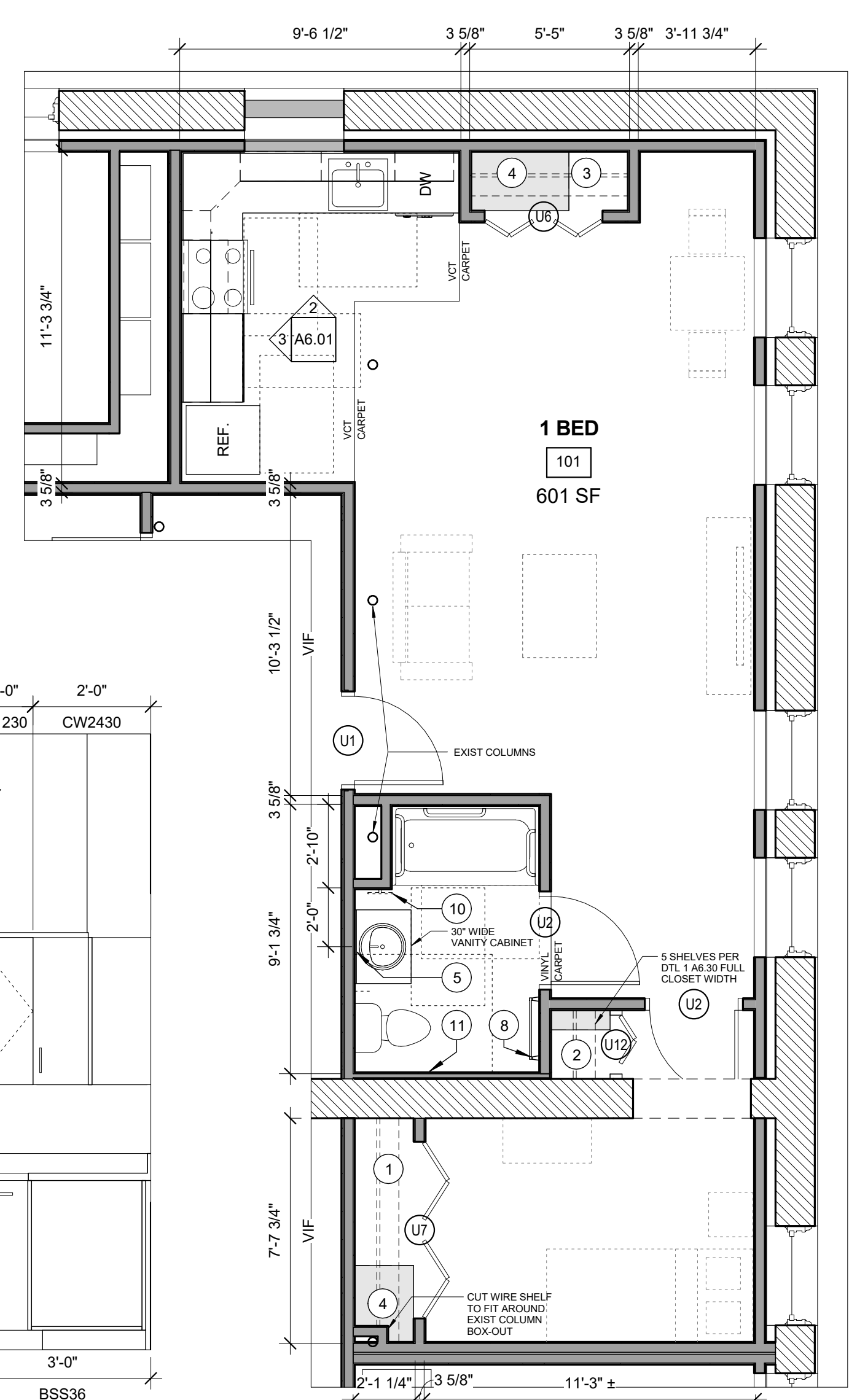
6 | UNIT 104
1/4" = 1'-0"
1 BED - ANSI 117.1 TYPE B
GENERAL STORAGE = 185.3 CU. FT.



4 | UNIT 103
1/4" = 1'-0"
1 BED - ANSI 117.1 TYPE B
GENERAL STORAGE = 104.4 CU. FT.



3 | UNIT 101 KITCHEN ELEVATION
1/2" = 1'-0"



1 | UNIT 101
1/4" = 1'-0"
1 BED - ANSI 117.1 TYPE B
GENERAL STORAGE = 101.1 CU. FT.