

Prepared For:
**MOTHERHOUSE
LLC**

Consultant:

Architect
**ARCHETYPE
Architects**
48 Union Wharf Portland, Maine 04101
(207) 774-0022 ARCHETYPE@ARCHETYPEPA.COM

Project:
**MOTHERHOUSE
SENIOR HOUSING**
605 STEVENS AVENUE
PORTLAND, MAINE 04103

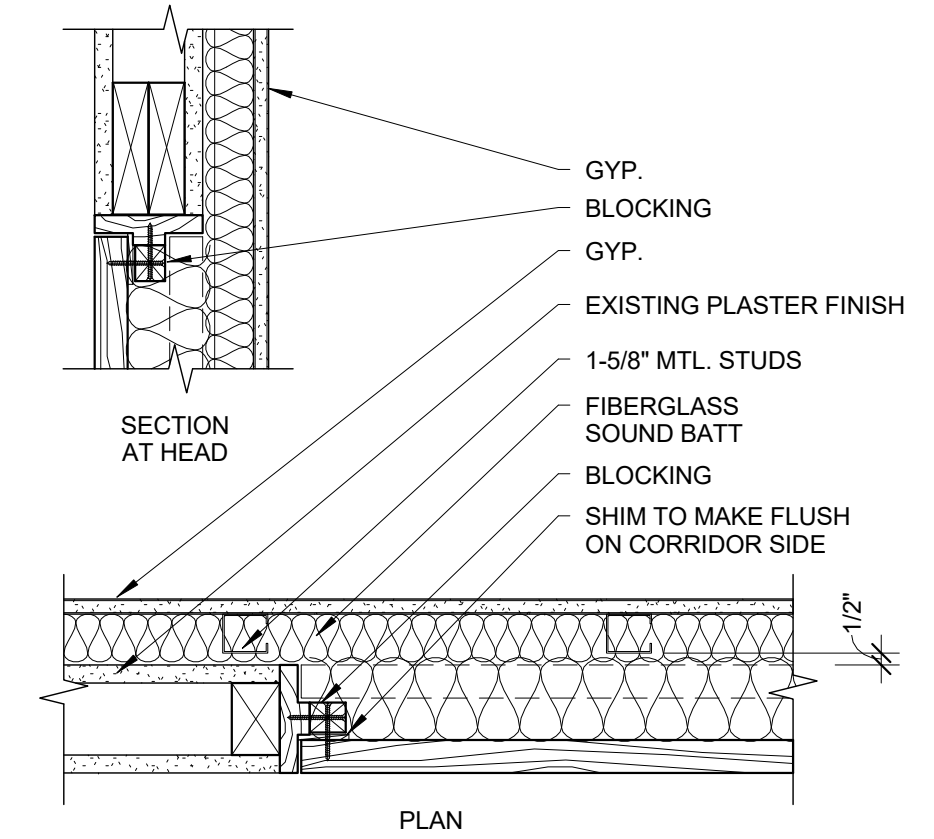
Revisions:

Scale: 1 1/2" = 1'-0"

Date: 15 FEB 2016

DETAILS

A5.02



1 | HISTORIC FIXED DOOR DETAIL
1 1/2" = 1'-0"