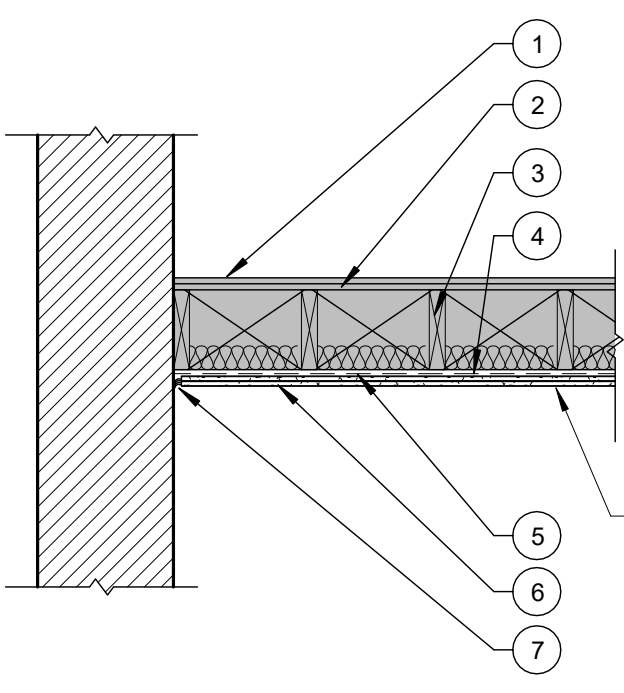


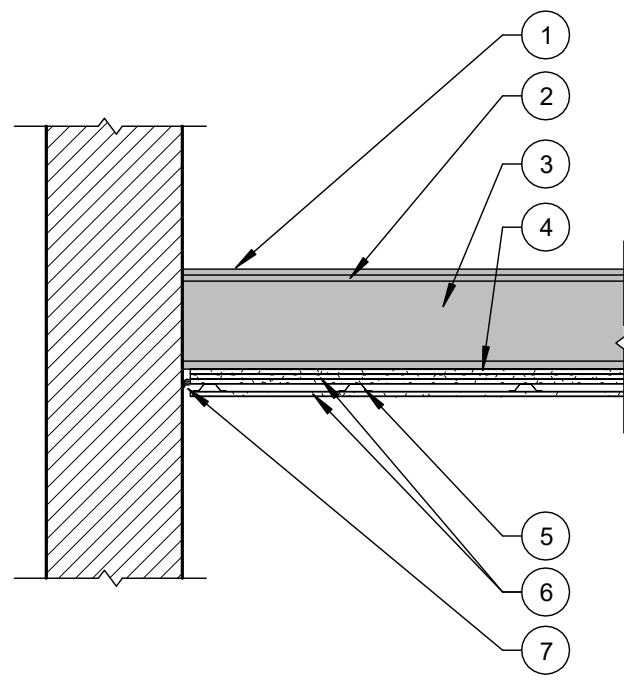
- LABEL 2 HR**
- C6** CEILING SYSTEM
2 HR RATING
NEW GYPSUMBOARD CEILING ADDED = 1 HR
(BASED ON GA FILE NOS. FC 5725 AND UL L556)
STC SOUND - NA
- WOOD FLOOR - EXISTING HARDWOOD FLOOR
 - SUBFLOOR - 1 IN. WOOD PLANK SUBFLOOR
 - FLOOR JOISTS - EXISTING 2" X 10" WOOD JOISTS WITH WOOD BRIDGING
 - EXISTING CEILING - TIN (ASSUMED ON WOOD LATH). NUMBER, CATALOGUE, AND REMOVE TIN FOR REINSTALLATION. WOOD LATH TO REMAIN.
 - EXISTING BEAM - TIN COVER AND TRIM TO REMAIN
 - RESILIENT CHANNELS - FORMED FROM MIN. 0.020" THICK GALV. STEEL, 1/2" DEEP BY 2-3/8" WIDE AT THE BASE AND 1-3/8" WIDE AT THE FACE AS SHOWN, SPACED 12" O.C. PERPENDICULAR TO JOISTS. CHANNELS SECURED TO EACH JOIST WITH 1-1/4" LONG TYPE S BUGLE HEAD STEEL SCREWS. CHANNELS OVERLAPPED 4" AT SPLICES. TWO CHANNELS, SPACED 6" O.C. ORIENTED OPPOSITE EACH OTHER AT GYPSUM PANEL END JOINTS. ADDITIONAL CHANNELS SHALL EXTEND MIN. 6" BEYOND EACH SIDE EDGE OF PANEL.
 - CEILING - (4) LAYERS 5/8" TYPE X GYPSUM WALL BOARD. BASE LAYER 5/8" GYPSUM WALLBOARD APPLIED AT RIGHT ANGLES TO EXISTING WOOD JOISTS 24" O.C. WITH 1 1/4" TYPE W DRYWALL SCREWS 12" O.C. - SECOND LAYER 5/8" TYPE X GYPSUM WALLBOARD APPLIED AT RIGHT ANGLES TO JOISTS WITH 2" TYPE W DRYWALL SCREWS 12" O.C. - SECOND LAYER JOINTS OFFSET 24" FROM BASE LAYER JOISTS. THIRD LAYER 5/8" TYPE X GYPSUM WALLBOARD APPLIED AT RIGHT ANGLES TO JOISTS WITH 2 1/2" TYPE W DRYWALL SCREWS 12" O.C. THIRD LAYER OFFSET 12" FROM SECOND LAYER JOINTS. FACE LAYER 5/8" TYPE X GYPSUM WALLBOARD APPLIED AT RIGHT ANGLES TO FURRING CHANNELS WITH 1 1/8" TYPE S DRYWALL SCREWS 12" O.C.
 - SEALANT - UL AND STC LISTED SEALANT, FULL PERIMETER
 - TAPE AND COMPOUND - (NOT SHOWN) VINYL DRY OR PREMIXED JOINT COMPOUND, APPLIED IN TWO COATS TO JOISTS AND SCREW HEADS, PAPER TAPE, 2 IN. WIDE, EMBEDDED IN FIRST LAYER OF COMPOUND OVER ALL JOINTS.

6 | C5 - CEILING ASSEMBLY DETAIL
1/2" = 1'-0"



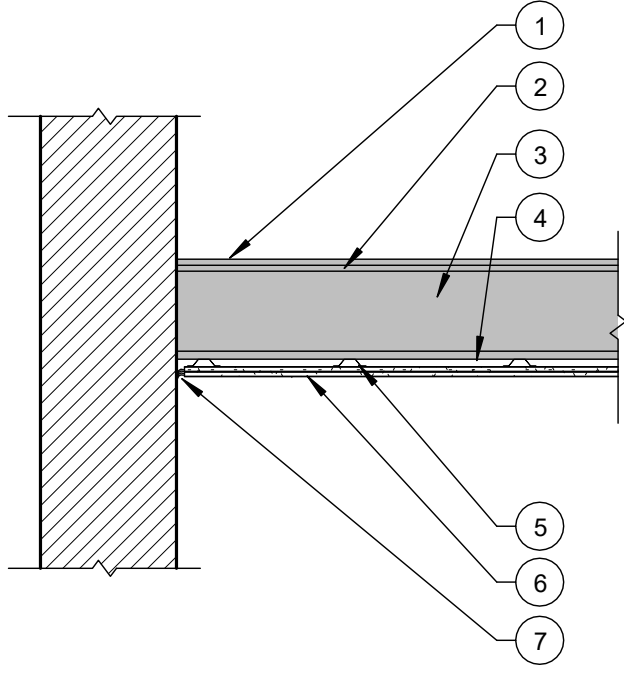
- LABEL 1 HR**
- C3** CEILING SYSTEM
1 HR RATING
NEW GYPSUMBOARD CEILING ADDED = 1 HR
(BASED ON GA FILE NOS. FC 5406 AND RC 2601)
STC SOUND - NA
- WOOD FLOOR - EXISTING HARDWOOD FLOOR
 - SUBFLOOR - 1 IN. WOOD PLANK SUBFLOOR
 - FLOOR JOISTS - EXISTING 2" X 10" WOOD JOISTS WITH WOOD BRIDGING
 - EXISTING CEILING - (NOT SHOWN) PLASTER ON WOOD LATH TO BE REMOVED
 - RESILIENT CHANNELS - FORMED FROM MIN. 0.020" THICK GALV. STEEL, 1/2" DEEP BY 2-3/8" WIDE AT THE BASE AND 1-3/8" WIDE AT THE FACE AS SHOWN, SPACED 12" O.C. PERPENDICULAR TO JOISTS. CHANNELS SECURED TO EACH JOIST WITH 1-1/4" LONG TYPE S BUGLE HEAD STEEL SCREWS. CHANNELS OVERLAPPED 4" AT SPLICES. TWO CHANNELS, SPACED 6" O.C. ORIENTED OPPOSITE EACH OTHER AT GYPSUM PANEL END JOINTS. ADDITIONAL CHANNELS SHALL EXTEND MIN. 6" BEYOND EACH SIDE EDGE OF PANEL.
 - CEILING - (2) LAYERS 5/8" TYPE X GYPSUM WALL BOARD FASTENED TO FURRING CHANNELS. THE BASE LAYER IS ATTACHED AT RIGHT TO FURRING WITH 1IN. TYPE S OR S-12 DRYWALL SCREWS AT 24 IN. OC. THE FACE LAYER IS ATTACHED AT RIGHT ANGLES TO THE FURRING WITH 1 5/8 IN. TYPE S OR S-12 DRYWALL SCREWS 12 IN. OC AT END JOINTS AND INTERMEDIATE FURRING AND 1 1/2 IN. TYPE G DRYWALL SCREWS AT 12 IN. OC PLACES 2 IN. BACK ON EITHER SIDE OF END JOINTS. JOINTS ON THE FACE LAYER ARE OFFSET 24 IN. FROM JOINTS ON THE BASE LAYER. FACE LAYER JOINTS ARE FINISHED TO LEVEL 1 AS SPECIFIED IN GA-214.
 - SEALANT - UL AND STC LISTED SEALANT, FULL PERIMETER
 - TAPE AND COMPOUND - (NOT SHOWN) VINYL DRY OR PREMIXED JOINT COMPOUND, APPLIED IN TWO COATS TO JOISTS AND SCREW HEADS, PAPER TAPE, 2 IN. WIDE, EMBEDDED IN FIRST LAYER OF COMPOUND OVER ALL JOINTS.
 - SOUND INSULATION - 3" SOUND ATTENUATING FIBERGLASS BLANKETS (SAFB)

3 | C3 - CEILING ASSEMBLY DETAIL
1/2" = 1'-0"



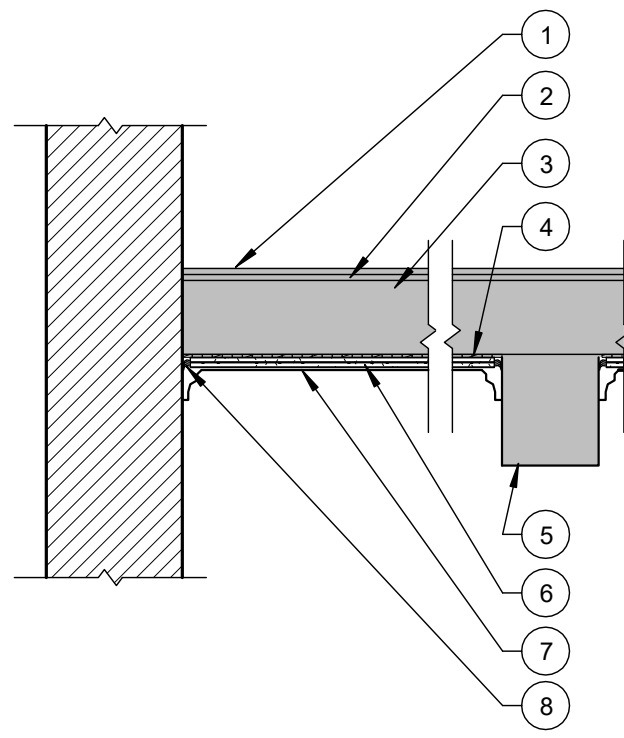
- LABEL 2 HR**
- C5** CEILING SYSTEM
2 HR RATING
NEW GYPSUMBOARD CEILING ADDED = 1 HR
(BASED ON GA FILE NOS. FC 5725 AND UL L556)
STC SOUND - NA
- WOOD FLOOR - EXISTING HARDWOOD FLOOR
 - SUBFLOOR - 1 IN. WOOD PLANK SUBFLOOR
 - FLOOR JOISTS - EXISTING 2" X 10" WOOD JOISTS WITH WOOD BRIDGING
 - EXISTING CEILING - PLASTER ON WOOD LATH
 - RESILIENT CHANNELS - FORMED FROM MIN. 0.020" THICK GALV. STEEL, 1/2" DEEP BY 2-3/8" WIDE AT THE BASE AND 1-3/8" WIDE AT THE FACE AS SHOWN, SPACED 12" O.C. PERPENDICULAR TO JOISTS. CHANNELS SECURED TO EACH JOIST WITH 1-1/4" LONG TYPE S BUGLE HEAD STEEL SCREWS. CHANNELS OVERLAPPED 4" AT SPLICES. TWO CHANNELS, SPACED 6" O.C. ORIENTED OPPOSITE EACH OTHER AT GYPSUM PANEL END JOINTS. ADDITIONAL CHANNELS SHALL EXTEND MIN. 6" BEYOND EACH SIDE EDGE OF PANEL.
 - CEILING - (4) LAYERS 5/8" TYPE X GYPSUM WALL BOARD. BASE LAYER 5/8" GYPSUM WALLBOARD APPLIED AT RIGHT ANGLES TO EXISTING WOOD JOISTS 24" O.C. WITH 1 1/4" TYPE W DRYWALL SCREWS 12" O.C. - SECOND LAYER 5/8" TYPE X GYPSUM WALLBOARD APPLIED AT RIGHT ANGLES TO JOISTS WITH 2" TYPE W DRYWALL SCREWS 12" O.C. - SECOND LAYER JOINTS OFFSET 24" FROM BASE LAYER JOISTS. THIRD LAYER 5/8" TYPE X GYPSUM WALLBOARD APPLIED AT RIGHT ANGLES TO JOISTS WITH 2 1/2" TYPE W DRYWALL SCREWS 12" O.C. THIRD LAYER OFFSET 12" FROM SECOND LAYER JOINTS. FACE LAYER 5/8" TYPE X GYPSUM WALLBOARD APPLIED AT RIGHT ANGLES TO FURRING CHANNELS WITH 1 1/8" TYPE S DRYWALL SCREWS 12" O.C.
 - SEALANT - UL AND STC LISTED SEALANT, FULL PERIMETER
 - TAPE AND COMPOUND - (NOT SHOWN) VINYL DRY OR PREMIXED JOINT COMPOUND, APPLIED IN TWO COATS TO JOISTS AND SCREW HEADS, PAPER TAPE, 2 IN. WIDE, EMBEDDED IN FIRST LAYER OF COMPOUND OVER ALL JOINTS.

5 | C5 - CEILING ASSEMBLY DETAIL.
1/2" = 1'-0"



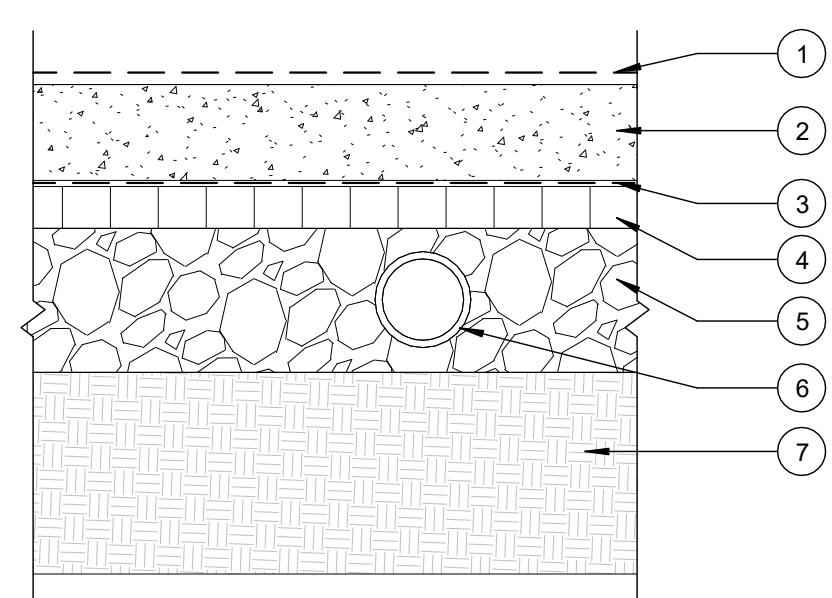
- LABEL 1 HR**
- C2** CEILING SYSTEM
1 HR RATING
NEW GYPSUMBOARD CEILING ADDED = 1 HR
(BASED ON GA FILE NOS. FC 5406 AND RC 2601)
STC SOUND - NA
- WOOD FLOOR - EXISTING HARDWOOD FLOOR
 - SUBFLOOR - 1 IN. WOOD PLANK SUBFLOOR
 - FLOOR JOISTS - EXISTING 2" X 10" WOOD JOISTS WITH WOOD BRIDGING
 - EXISTING CEILING - PLASTER ON WOOD LATH
 - RESILIENT CHANNELS - FORMED FROM MIN. 0.020" THICK GALV. STEEL, 1/2" DEEP BY 2-3/8" WIDE AT THE BASE AND 1-3/8" WIDE AT THE FACE AS SHOWN, SPACED 12" O.C. PERPENDICULAR TO JOISTS. CHANNELS SECURED TO EACH JOIST WITH 1-1/4" LONG TYPE S BUGLE HEAD STEEL SCREWS. CHANNELS OVERLAPPED 4" AT SPLICES. TWO CHANNELS, SPACED 6" O.C. ORIENTED OPPOSITE EACH OTHER AT GYPSUM PANEL END JOINTS. ADDITIONAL CHANNELS SHALL EXTEND MIN. 6" BEYOND EACH SIDE EDGE OF PANEL.
 - CEILING - (2) LAYERS 5/8" TYPE X GYPSUM WALL BOARD FASTENED TO FURRING CHANNELS. THE BASE LAYER IS ATTACHED AT RIGHT TO FURRING WITH 1IN. TYPE S OR S-12 DRYWALL SCREWS AT 24 IN. OC. THE FACE LAYER IS ATTACHED AT RIGHT ANGLES TO THE FURRING WITH 1 5/8 IN. TYPE S OR S-12 DRYWALL SCREWS 12 IN. OC AT END JOINTS AND INTERMEDIATE FURRING AND 1 1/2 IN. TYPE G DRYWALL SCREWS AT 12 IN. OC PLACES 2 IN. BACK ON EITHER SIDE OF END JOINTS. JOINTS ON THE FACE LAYER ARE OFFSET 24 IN. FROM JOINTS ON THE BASE LAYER. FACE LAYER JOINTS ARE FINISHED TO LEVEL 1 AS SPECIFIED IN GA-214.
 - SEALANT - UL AND STC LISTED SEALANT, FULL PERIMETER
 - TAPE AND COMPOUND - (NOT SHOWN) VINYL DRY OR PREMIXED JOINT COMPOUND, APPLIED IN TWO COATS TO JOISTS AND SCREW HEADS, PAPER TAPE, 2 IN. WIDE, EMBEDDED IN FIRST LAYER OF COMPOUND OVER ALL JOINTS.

2 | C2 - CEILING ASSEMBLY DETAIL
1/2" = 1'-0"



- LABEL 1 HR**
- C4** CEILING SYSTEM
1 HR RATING
NEW GYPSUMBOARD CEILING ADDED = 1 HR
(BASED ON GA FILE NOS. FC 5406 AND RC 2601)
STC SOUND - NA
- WOOD FLOOR - EXISTING HARDWOOD FLOOR
 - SUBFLOOR - 1 IN. WOOD PLANK SUBFLOOR
 - FLOOR JOISTS - EXISTING 2" X 10" WOOD JOISTS WITH WOOD BRIDGING
 - EXISTING CEILING - TIN (ASSUMED ON WOOD LATH). NUMBER, CATALOGUE, AND REMOVE TIN FOR REINSTALLATION. WOOD LATH TO REMAIN.
 - EXISTING BEAM - TIN COVER AND TRIM TO REMAIN
 - CEILING - (2) LAYERS 5/8" TYPE X GYPSUM WALL BOARD FASTENED TO FURRING CHANNELS. THE BASE LAYER IS ATTACHED AT RIGHT ANGLES TO THE FURRING WITH 1IN. TYPE S OR S-12 DRYWALL SCREWS AT 24 IN. OC. THE SECOND LAYER IS ATTACHED AT RIGHT ANGLES TO THE FURRING WITH 1 5/8 IN. TYPE S OR S-12 DRYWALL SCREWS 12 IN. OC AT END JOINTS AND INTERMEDIATE FURRING AND 1 1/2 IN. TYPE G DRYWALL SCREWS AT 12 IN. OC PLACES 2 IN. BACK ON EITHER SIDE OF END JOINTS. JOINTS ON THE FACE LAYER ARE OFFSET 24 IN. FROM JOINTS ON THE BASE LAYER. FACE LAYER JOINTS ARE FINISHED TO LEVEL 1 AS SPECIFIED IN GA-214.
 - EXISTING CEILING - REINSTALL TIN CEILING AND TRIM IN ORIGINAL LOCATION
 - SEALANT - UL AND STC LISTED SEALANT, FULL PERIMETER
 - TAPE AND COMPOUND - (NOT SHOWN) VINYL DRY OR PREMIXED JOINT COMPOUND, APPLIED IN TWO COATS TO JOISTS AND SCREW HEADS, PAPER TAPE, 2 IN. WIDE, EMBEDDED IN FIRST LAYER OF COMPOUND OVER ALL JOINTS.

4 | C4 - CEILING ASSEMBLY DETAIL
1/2" = 1'-0"



- FLOOR SYSTEM - SLAB ON GRADE**
- FINISH FLOOR - NOT SHOWN. SEE FINISH SCHEDULE
 - CONCRETE SLAB - SEE STRUCTURAL FOR STRENGTH, THICKNESS AND REINFORCEMENT SPECIFICATIONS
 - VAPOR BARRIER - POLYETHYLENE VAPOR BARRIER SHEET WITH SEAMS OVERLAPPED AND TAPED - SEE SPECIFICATIONS
 - RIGID INSULATION - 1" 30 PSI EXTRUDED POLYSTYRENE - R-10 - CONTINUOUS UNDER ENTIRE SLAB
 - 6" COARSE AGGREGATE
 - 4" PERFORATED PVC RADON PIPE - SEE PLUMBING PLANS FOR ADDITIONAL INFORMATION
 - COMPACTED STRUCTURAL - FILL COMPACTED TO 95% OF DRY DENSITY - SEE STRUCTURALS FOR DEPTH AND GRADATION

1 | FLOOR TYPE XX - SLAB ON GRADE
1 1/2" = 1'-0"