

Prepared For:
MOTHERHOUSE LLC
Address: _____
City, State: _____

Consultant:
ARCHETYPE architects
48 Union Wharf Portland, Maine 04101
(207) 774-0022 ARCHETYPE@ARCHETYPEPA.COM

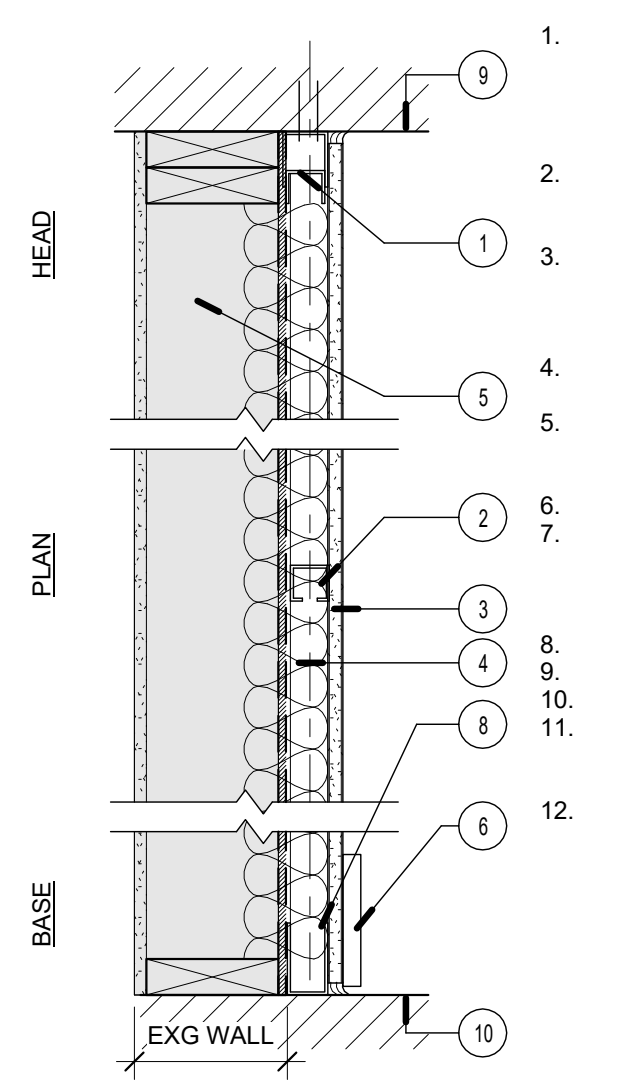
Architect:
MOTHERHOUSE SENIOR HOUSING
605 STEVENS AVENUE
PORTLAND, MAINE 04103

Project:
MOTHERHOUSE SENIOR HOUSING

Revisions:
Scale: 1 1/2" = 1'-0"
Date: 15 FEB 2016
WALL TYPES

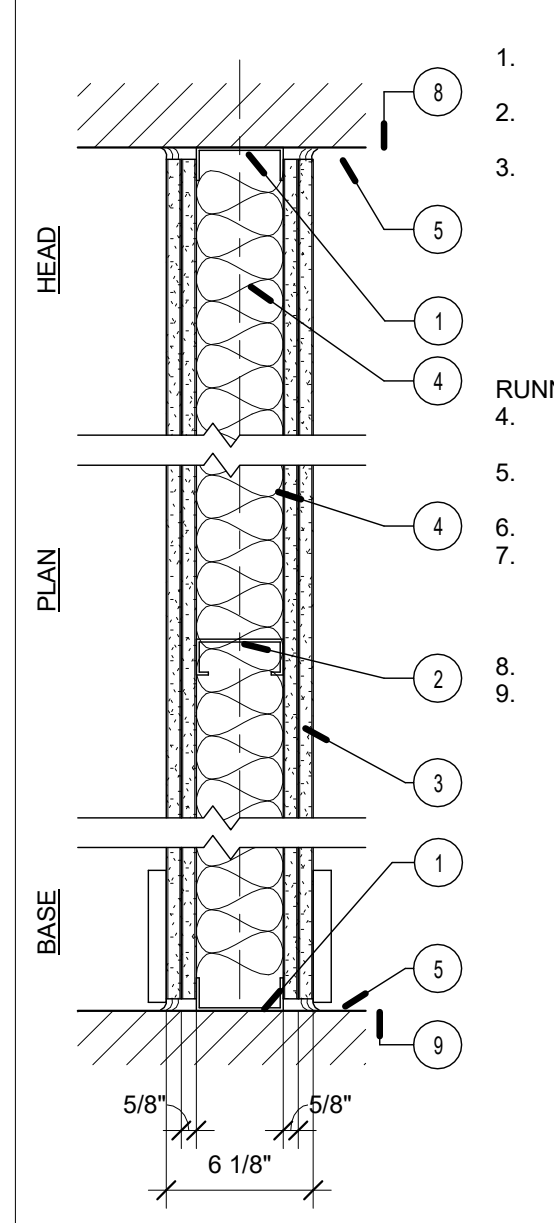
A4.00

W08 1 HR NON-BEARING FIRE BARRIER
DESIGN NUMBER - IBC TABLE 720.1(2), 12
STC SOUND - N/A



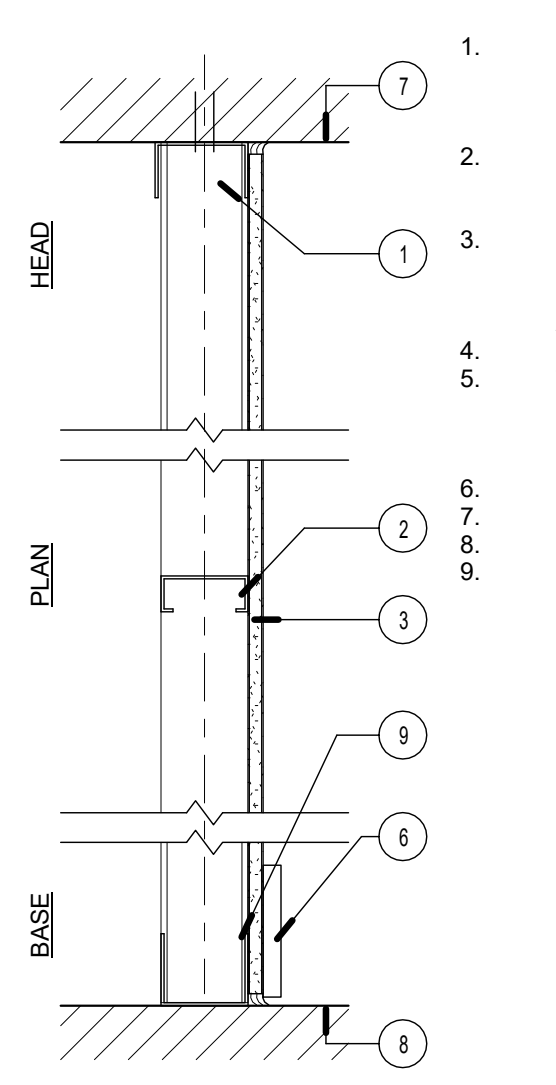
1. **CEILING RUNNER** - CHANNEL-SHAPED TOP TRACK, 1 5/8" WIDE BY 1 1/4" DEEP, FABRICATED FROM NO. 25 MSG GALV STEEL. ATTACHED TO CEILING WITH FASTENERS, 24" O.C. MAX. GYPSUM AND VERTICAL STUDS FASTENED TO TOP TRACK ONLY.
2. **STEEL STUDS** - CHANNEL SHAPED 25 MSG STEEL 1 5/8" STUDS SPACED MAX. 24" O.C. STUDS TO BE CUT 3/4" LESS THAN ASSEMBLY HEIGHT.
3. **GYPSUM BOARD** - (1) LAYER 5/8" GYP. BD. APPLIED PERPENDICULAR TO FRAMING WITH 1" TYPE S STEEL SCREWS SPACED 8" O.C. USE MOISTURE RESISTANT GYPBOARD ON ALL BATHROOM WALLS - TYPICAL ALL BATHROOMS
4. **SOUND BATT** - GLASS FIBER INSULATION 3 5/8 IN. THICK COMPRESSED AND FRICTION FIT IN STUD SPACE.
5. **EXISTING WALL** - PLASTER ON UNIT SIDE REMOVED TO ACCOMMODATE SOUND BATT. REPAIR PLASTER ON OPPOSITE SIDE AS REQUIRED.
6. **BLOCKING - (NOT SHOWN)** WOOD BLOCKING AS NEEDED
7. **TAPE AND COMPOUND - (NOT SHOWN)** VINYL, DRY OR PREMIXED JOINT COMPOUND, APPLIED IN TWO COATS TO JOINTS AND SCREW HEADS, PAPER TAPE, 2 IN. WIDE, EMBEDDED IN FIRST LAYER OF COMPOUND OVER ALL JOINTS.
8. **BASE** - SEE FINISH SCHEDULE
9. **UNDERSIDE OF STRUCTURE**
10. **TOP OF STRUCTURE**
11. **FLOOR RUNNER** - CHANNEL-SHAPED RUNNERS, MIN. 1 5/8" WIDE W/ DEEP LEGS, FABRICATED FROM NO. 20 MSG GALV STEEL. ATTACHED TO FLOOR WITH FASTENERS, 24" O.C. MAX.
12. **EXISTING WALL ASSEMBLY** - PLASTER REMOVED FROM INTERIOR SIDE OF PARTITION

LABEL 2 HR **W06** 2 HR NON BEARING FIRE BARRIER
DESIGN NUMBER - UL U419
SOUND RATING - N/A



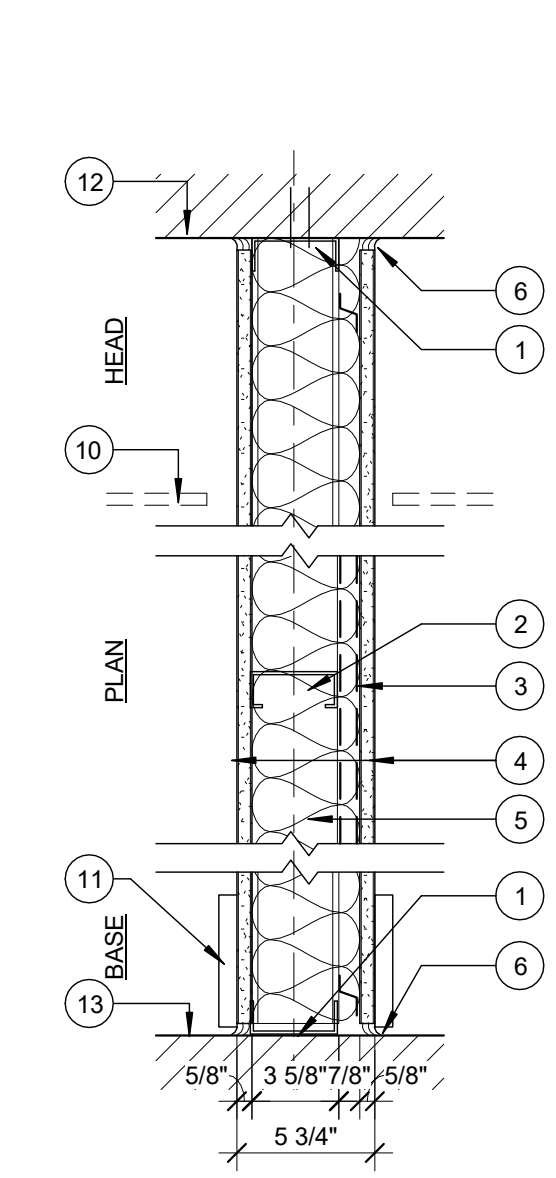
1. **CONT. METAL FLOOR AND CEILING RUNNER** - FASTENERS @ 24 IN. O.C. MAX. WITHIN 12 IN. OF ENDS
2. **STEEL STUDS** - TYPE A = 1 5/8 IN. STEEL STUDS 24IN. O.C., TYPE B = 3 5/8 IN. STEEL STUDS 24 IN. O.C.
3. **TYPE X GYPSUM BOARD** - (2) LAYERS PROPRIETARY 5/8 IN. TYPE X GYP. BD. EACH SIDE APPLIED VERTICALLY TO STUDS INNER LAYER ATTACHED WITH 1 IN. TYPE S DRYWALL SCREWS 8 IN. O.C. AT VERT. UNITS AND INTERMEDIATE STUDS AND 12 IN. O.C. AT TOP AND BOTTOM RUNNER. OUTER LAYER LAMINATED TO INNER LAYER WITH JOINT COMPOUND APPLIED WITH A NOTCHED SPREADER. JOINTS OF OUTER LAYER OFFSET 12 IN. FROM INNER LAYER
4. **SOUND BATT** - GLASS FIBER INSULATION 3 5/8 IN. THICK COMPRESSED AND FRICTION FIT IN STUD SPACE. (OMIT AT TYPE A)
5. **SEALANT** - UL AND STC LISTED SEALANT, FULL PERIMETER BOTH SIDES
6. **BLOCKING - (NOT SHOWN)** WOOD BLOCKING AS NEEDED
7. **TAPE AND COMPOUND - (NOT SHOWN)** VINYL, DRY OR PREMIXED JOINT COMPOUND, APPLIED IN TWO COATS TO JOISTS AND SCREW HEADS, PAPER TAPE, 2 IN. WIDE, EMBEDDED IN FIRST LAYER OF COMPOUND OVER ALL JOINTS.
8. **UNDERSIDE OF STRUCTURE**
9. **TOP OF STRUCTURE**

W04A **W04B** **W04C** NON-RATED NON-BEARING
DESIGN NUMBER - N/A
STC SOUND - N/A



1. **CEILING RUNNER** - CHANNEL-SHAPED TOP TRACK, MIN. 3 5/8" WIDE BY 1 1/4" DEEP, FABRICATED FROM NO. 25 MSG GALV STEEL. ATTACHED TO CEILING WITH FASTENERS, 24" O.C. MAX. GYPSUM AND VERTICAL STUDS FASTENED TO TOP TRACK ONLY
2. **STEEL STUDS** - CHANNEL SHAPED 25 MSG STEEL 3 5/8" STUDS SPACED MAX. 24" O.C. STUDS TO BE CUT 3/4" LESS THAN ASSEMBLY HEIGHT.
3. **GYPSUM BOARD** - (1) LAYER 5/8" GYP. BD. APPLIED PERPENDICULAR TO FRAMING WITH 1" TYPE S STEEL SCREWS SPACED 8" O.C. USE MOISTURE RESISTANT GYPBOARD ON ALL BATHROOM WALLS - TYPICAL ALL BATHROOMS
4. **BLOCKING - (NOT SHOWN)** WOOD BLOCKING AS NEEDED
5. **TAPE AND COMPOUND - (NOT SHOWN)** VINYL, DRY OR PREMIXED JOINT COMPOUND, APPLIED IN TWO COATS TO JOINTS AND SCREW HEADS, PAPER TAPE, 2 IN. WIDE, EMBEDDED IN FIRST LAYER OF COMPOUND OVER ALL JOINTS.
6. **BASE** - SEE FINISH SCHEDULE
7. **UNDERSIDE OF STRUCTURE**
8. **TOP OF STRUCTURE**
9. **FLOOR RUNNER** - CHANNEL-SHAPED RUNNERS, MIN. 3 5/8" WIDE W/ DEEP LEGS, FABRICATED FROM NO. 20 MSG GALV STEEL. ATTACHED TO FLOOR WITH FASTENERS, 24" O.C. MAX.

W02 1 HR NON-BEARING FIRE BARRIER
DESIGN NUMBER - UL U451
55-59 STC SOUND - RAL-TL-10-270



1. **CONT. METAL FLOOR AND CEILING RUNNER** - FASTENERS @ 2'-0" O.C. MAX. WITHIN 1' OF ENDS
2. **STEEL STUDS** - 3 5/8" STEEL STUDS 24" O.C.
3. **SOUND ISOLATION FURRING** - RESILIENT SOUND ISOLATION CLIP (CORRIDOR SIDE), ORIENTED PERPENDICULAR TO STUDS, 24" O.C. ATTACH WITH #8 WAFER HEAD SCREWS.
4. **TYPE X GYPSUM BOARD** - (1) LAYER PROPRIETARY 5/8" TYPE X GYP. BD. EACH SIDE APPLIED PERPENDICULAR TO STUDS WITH 1" TYPE S DRYWALL SCREWS 8" O.C. AT VERT. JNTS AND INTERMEDIATE STUDS AND 12" O.C. AT TOP AND BOTTOM RUNNER. SEE NOTES FOR GYP. BD. TYPE (STAGGER GYP. BD. JNTS 24" ON NON-FURRED SIDE.)
5. **SOUND BATT** - GLASS FIBER INSULATION 6 1/4" THICK, COMPRESSED AND FRICTION FIT IN STUD SPACE.
6. **SEALANT** - UL AND STC LISTED SEALANT, FULL PERIMETER BOTH SIDES.
7. **BLOCKING - (NOT SHOWN)** WOOD BLOCKING AS NEEDED
8. **TAPE AND COMPOUND - (NOT SHOWN)** VINYL, DRY OR PREMIXED JOINT COMPOUND, APPLIED IN TWO COATS TO JOISTS AND SCREW HEADS, PAPER TAPE, 2 IN. WIDE, EMBEDDED IN FIRST LAYER OF COMPOUND OVER ALL JOINTS.
9. **CEILING** - SEE ID
10. **SCHEDULED BASE** - SEE ID
11. **UNDERSIDE OF STRUCTURE**
12. **TOP OF STRUCTURE**
13. **TOP OF STRUCTURE**

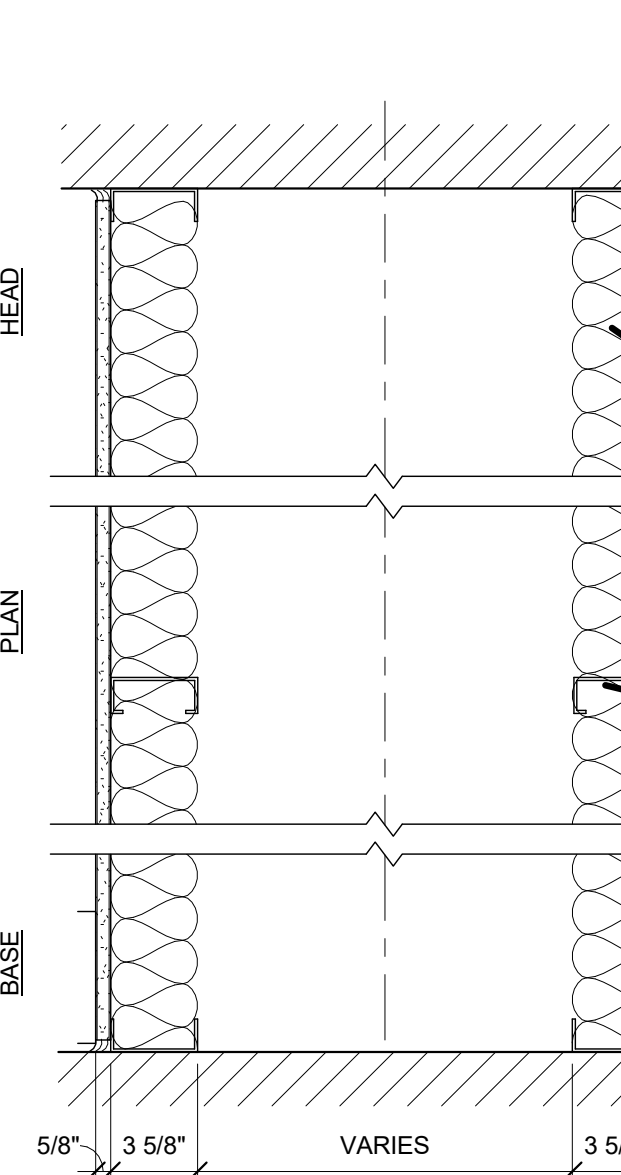
8 WALL 08 - 1 HR RATED NON-BEARING FIRE BARRIER
1 1/2" = 1'-0"

6 WALL 06 - 2 HR NON-BEARING FIRE BARRIER
1 1/2" = 1'-0"

4 WALL 04A&B - NON-RATED ONE-SIDED PARTITION
1 1/2" = 1'-0"

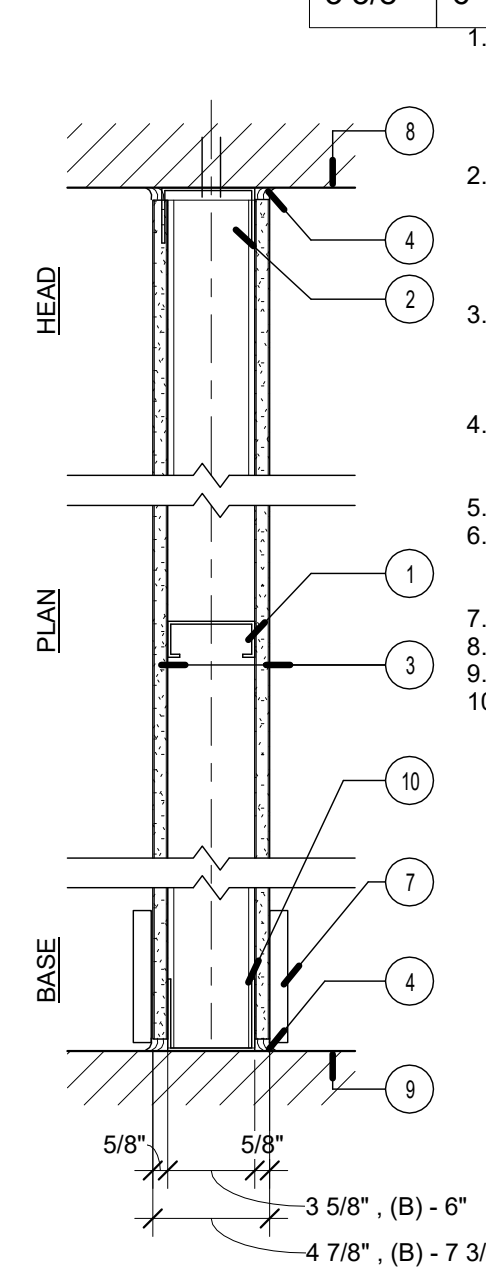
2 WALL TYPE 02 - MTL STD - CORR - 5 3/4"
1 1/2" = 1'-0"

LABEL 2 HR **W07** 2 HR NON BEARING FIRE BARRIER
DESIGN NUMBER - UL U411
SOUND RATING - N/A



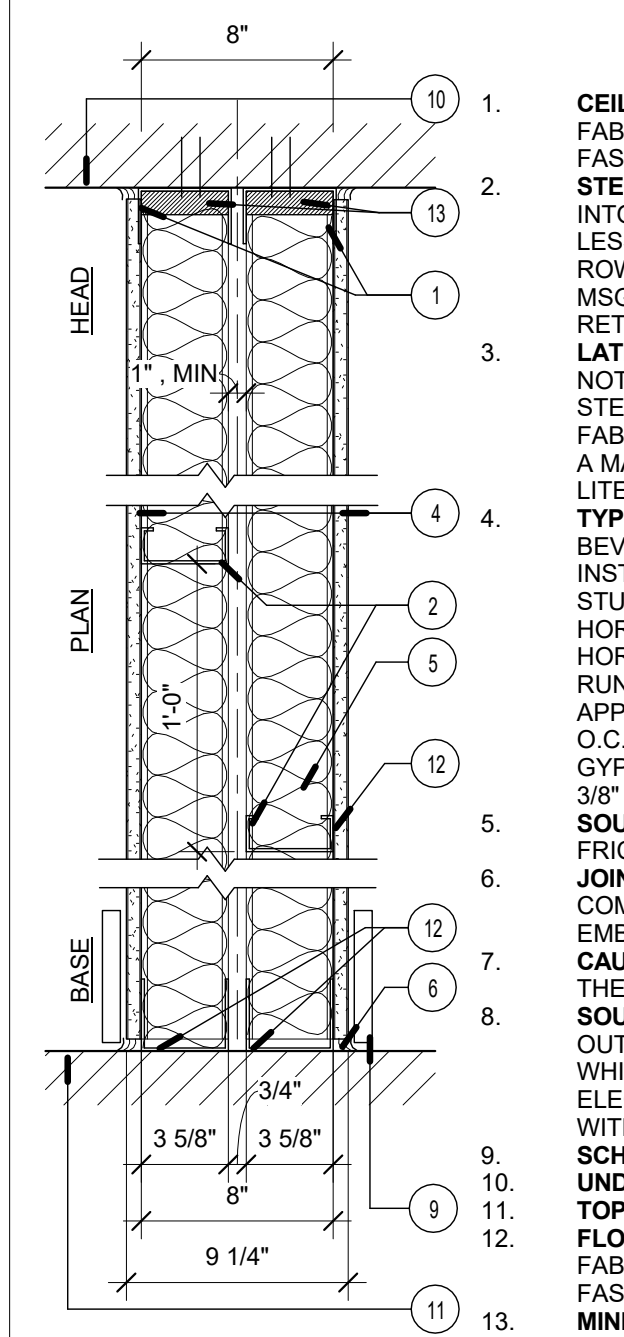
1. **CONT. METAL FLOOR AND CEILING RUNNER** - FASTENERS @ 24 IN. O.C. MAX. WITHIN 12 IN. OF ENDS
2. **STEEL STUDS** - 3 5/8" IN. STEEL STUDS 24 IN. O.C.
3. **TYPE X GYPSUM BOARD** - LAYER PROPRIETARY 5/8 IN. TYPE X GYP. BD. EACH SIDE APPLIED VERTICALLY TO STUDS ATTACHED WITH 1 IN. TYPE S DRYWALL SCREWS 8 IN. O.C. AT VERT. UNITS AND INTERMEDIATE STUDS AND 12 IN. O.C. AT TOP AND BOTTOM RUNNER. ATTACHED TO FLOOR AND CEILING RUNNER TRACKS WITH 1 5/8 IN. TYPE S SCREWS SPACED 12 IN. O.C.
4. **SOUND BATT** - GLASS FIBER INSULATION 3 5/8 IN. THICK COMPRESSED AND FRICTION FIT IN STUD SPACE.
5. **SEALANT** - UL AND STC LISTED SEALANT, FULL PERIMETER BOTH SIDES
6. **BLOCKING - (NOT SHOWN)** WOOD BLOCKING AS NEEDED
7. **TAPE AND COMPOUND - (NOT SHOWN)** VINYL, DRY OR PREMIXED JOINT COMPOUND, APPLIED IN TWO COATS TO JOISTS AND SCREW HEADS, PAPER TAPE, 2 IN. WIDE, EMBEDDED IN FIRST LAYER OF COMPOUND OVER ALL JOINTS.
8. **UNDERSIDE OF STRUCTURE**
9. **TOP OF STRUCTURE**

W05A **W05B** NON-RATED NON-BEARING
DESIGN NUMBER - N/A



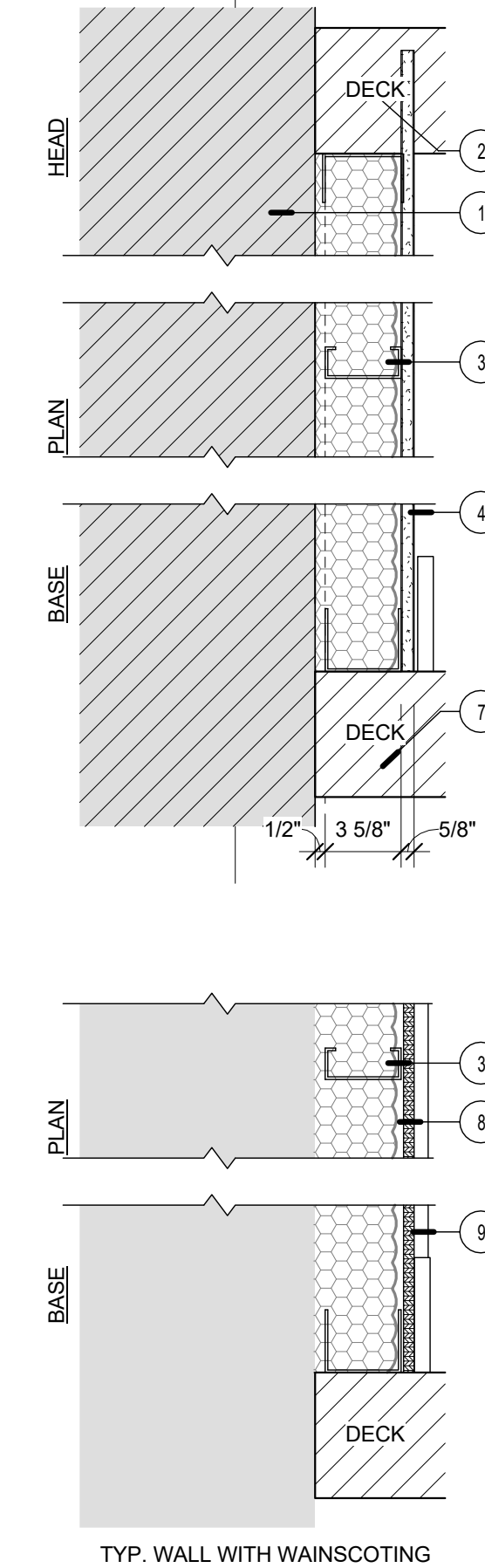
1. **STUDS** - CHANNEL-SHAPED, MIN 3-5/8" WIDE BY 1-1/4" DEEP WITH 5/16" FOLDED BACK RETURN FLANGE LEGS. FABRICATED FROM NO. 25 MSG GALV STEEL. MAX STUD SPACING 24" O.C. STUDS TO BE CUT 1/2" LESS THAN ASSEMBLY HEIGHT. NOTE: WALL TYPE 'B' USES 6" STUDS IN PLACE OF 3-5/8" STUDS.
2. **CEILING RUNNER** - CHANNEL-SHAPED TOP TRACK, MIN. 3 5/8" WIDE BY 1 1/4" DEEP, FABRICATED FROM NO. 20 MSG GALV STEEL. TOP TRACK SITS INSIDE VERTICALLY SLOTTED HEAD TRACK, ATTACHED TO CEILING WITH FASTENERS, 24" O.C. MAX. VERTICAL STUDS AND GYP FASTENED TO TOP TRACK ONLY
3. **GYPSUM BOARD** - (1) LAYER 5/8" GYP. BD. EACH SIDE APPLIED PERPENDICULAR TO FRAMING WITH 1" TYPE S STEEL SCREWS SPACED 8" O.C. GYP HELD UP FROM FLOOR MIN 1/4" TO 3/8" FOR INSTALLATION OF ACOUSTIC SEALANT - TYPICAL
4. **CAULKING AND SEALANTS** - A BEAD OF ACOUSTICAL SEALANT APPLIED AROUND THE PARTITION PERIMETER FOR SOUND CONTROL, BOTH SIDES OF WALL.
5. **BLOCKING - (NOT SHOWN)** WOOD BLOCKING AS NEEDED
6. **JOINT TAPE AND COMPOUND - (NOT SHOWN)** VINYL, DRY OR PREMIXED JOINT COMPOUND, APPLIED TO JOINTS AND SCREW HEADS, PAPER TAPE, 2" WIDE, EMBEDDED IN FIRST LAYER OF COMPOUND OVER ALL JOINTS.
7. **BASE** - SEE FINISH SCHEDULE
8. **UNDERSIDE OF STRUCTURE**
9. **TOP OF STRUCTURE**
10. **FLOOR RUNNER** - CHANNEL-SHAPED RUNNERS, MIN. 3 5/8" WIDE W/ DEEP LEGS, FABRICATED FROM NO. 20 MSG GALV STEEL. ATTACHED TO FLOOR WITH FASTENERS, 24" O.C. MAX.

LABEL 1 HR **W03** 1 HR NON-BEARING FIRE BARRIER
DESIGN NUMBER - UL U469 - 1 HOUR FIRE
50-54 STC SOUND - RAL TL06-299, 8-10-06



1. **CEILING RUNNER** - CHANNEL-SHAPED TOP TRACK, MIN. 3 5/8" WIDE BY 1 1/4" DEEP, FABRICATED FROM NO. 25 MSG GALV STEEL. ATTACHED TO CEILING WITH FASTENERS, 24" O.C. MAX. VERTICAL STUDS AND GYP FASTENED TO STUDS ONLY
2. **STEEL STUDS** - CHANNEL SHAPED, SUPPLIED WITH CUTOOTS, FRICTION-FITTED INTO FLOOR AND CEILING RUNNERS AND SPACED A MAX 24" O.C. STUDS CUT 1/2" LESS THAN ASSEMBLY HEIGHT AND EVENLY STAGGERED BETWEEN THE TWO ROWS OF FLOOR AND CEILING RUNNERS. STUDS FABRICATED FROM MIN NO. 25 MSG GALV STEEL, MIN 3-5/8" DEEP BY 1-5/8" WIDE WITH 3/8" FOLDED BACK RETURN FLANGE LEGS.
3. **LATERAL BRACING** - (NOT SHOWN) RIGHT-ANGLE SHAPED, SUPPLIED WITH NOTCHES, SPACED 12, 16, OR 24 IN. O.C. FRICTION FITTED TO THE CUTOOTS IN STEEL STUDS, SUPPLIED IN 7/8" BY 7/8" BY 50" LENGTHS. LATERAL BRACING BARS FABRICATED FROM MIN. 20 MSG GALV STEEL. THE BRACING SHALL BE LOCATED A MAX OF 5 FT. O.C. IN ACCORDANCE WITH THE MANUFACTURERS PUBLISHED LITERATURE.
4. **TYPE X GYP BOARD** - 5/8 IN. THICK, 4 FT. WIDE, GYP BOARD PANELS WITH BEVELED, SQUARE OR TAPERED EDGES, APPLIED VERT. OR HORIZ. SINGLE LAYER INSTALLED ON ONE SIDE OF STL STUDS. VERTICAL JOINTS CENTERED OVER STUDS AND STAGGERED ONE STUD CAVITY ON OPPOSITE SIDES OF STUDS. HORIZ. EDGE JOINTS AND HORIZ. BUTT JOINTS NEED NOT BE BACKED BY FRAMING. HORIZ. EDGE JOINTS AND HORIZ. PANELS ATTACHED TO STL STUDS AND FL RUNNER WITH 1-1/4 IN. LONG TYPE S STL SCREWS SPACED 8 IN. O.C. WHEN APPLIED HORIZ. OR 8 IN. O.C. ALONG VERTICAL AND BOTTOM EDGES AND 12 IN. O.C. IN THE FIELD WHEN APPLIED VERT. WHEN USED IN WIDTH OTHER THAN 48 IN. GYP PANELS TO BE INSTALLED HORIZ. GYP HELD UP FROM FLOOR MIN 1/4" TO 3/8" FOR INSTALLATION OF ACOUSTIC SEALANT - TYPICAL.
5. **SOUND BATT** - GLASS FIBER INSULATION 3 5/8 IN. THICK COMPRESSED AND FRICTION FIT IN STUD SPACE.
6. **JOINT TAPE AND COMPOUND - (NOT SHOWN)** VINYL, DRY OR PREMIXED JOINT COMPOUND, APPLIED TO JOINTS AND SCREW HEADS, PAPER TAPE, 2" WIDE, EMBEDDED IN FIRST LAYER OF COMPOUND OVER ALL JOINTS.
7. **CAULKING AND SEALANTS** - A BEAD OF ACOUSTICAL SEALANT APPLIED AROUND THE PARTITION PERIMETER FOR SOUND CONTROL, BOTH SIDES OF WALL.
8. **SOUND CONTROL - (NOT SHOWN)** - ALL J-BOXES INCLUDING SWITCHES AND OUTLETS SHALL BE SEALED WITH PUTTY PACKS IN ALL SOUND-RATED WALLS WHICH USE FIBERGLASS BATT INSULATION. ALTERNATELY CONTRACTOR CAN ELECT TO USE LESSCO BOXES, WITH THE FRONT FLANGE SEALED TO GYP FACE WITH CAULK.
9. **SCHEDULED BASE** - SEE FINISH SCHEDULE
10. **UNDERSIDE OF STRUCTURE**
11. **TOP OF STRUCTURE**
12. **FLOOR RUNNER** - CHANNEL-SHAPED RUNNERS, MIN. 3 5/8" WIDE W/ DEEP LEGS, FABRICATED FROM NO. 25 MSG GALV STEEL. ATTACHED TO FLOOR WITH FASTENERS, 24" O.C. MAX.
13. **MINERAL WOOL**

LABEL 2 HR **W01** 2 HR BEARING FIRE BARRIER
DESIGN NUMBER - IBC TABLE 720.1(2) - 1-1.1.2 HR [2 HR = 3.8"]
STC SOUND - N/A
R-21



1. **EXISTING LOAD-BEARING MASONRY EXTERIOR WALL, RATING PROVIDED BY BRICK** - SEE IBC REFERENCE ABOVE
2. **CEILING TRACK** - FABRICATED FROM NO. 25 MSG GALV STEEL. HEAD TRACK ATTACHED TO CEILING WITH FASTENERS, 24" O.C. MAX. VERTICAL STUDS AND GYP FASTENED TO TOP TRACK.
3. **STEEL STUDS** - 3 5/8" STEEL STUDS SET MIN. 1/2" FROM FACE OF EXTERIOR MASONRY WALL.
4. **GYP BOARD** - 5/8 IN. THICK, 4 FT WIDE. SCREW ATTACHED WITH 1 IN. LONG TYPE S STEEL SCREWS SPACED MAX 12 IN. OC
5. **INSULATION** - CLOSED CELL SPRAY FOAM INSULATION TO A MINIMUM DEPTH OF 3-1/2" R-21
6. **JOINT TAPE AND COMPOUND - (NOT SHOWN)** VINYL, DRY OR PREMIXED JOINT COMPOUND, APPLIED TO JOINTS AND SCREW HEADS, PAPER TAPE, 2" WIDE, EMBEDDED IN FIRST LAYER OF COMPOUND OVER ALL JOINTS.
7. **FLOOR RUNNER** - CHANNEL-SHAPED RUNNERS, MIN. 3 5/8" WIDE W/ DEEP LEGS, FABRICATED FROM NO. 25 MSG GALV STEEL. ATTACHED TO FLOOR WITH FASTENERS, 24" O.C. MAX.
8. **BLOCKING** - 1/2" OSB PLYWOOD FASTENED TO STUDS WITH TYPE S STEEL SCREWS TO HEIGHT OF EXISTING WAINSCOTING (42" V.I.F.)
9. **WAINSCOTING** - RE-FASTEN EXISTING SALVAGED WAINSCOTING

7 WALL 07 - 2 HR NON-BEARING FIRE BARRIER
1 1/2" = 1'-0"

5 WALL 05A&B - NON RATED
1 1/2" = 1'-0"

3 WALL 03 - DEMISING WALL
1 1/2" = 1'-0"

1 WALL 01 - EXTERIOR INSULATING WALL
1 1/2" = 1'-0"