

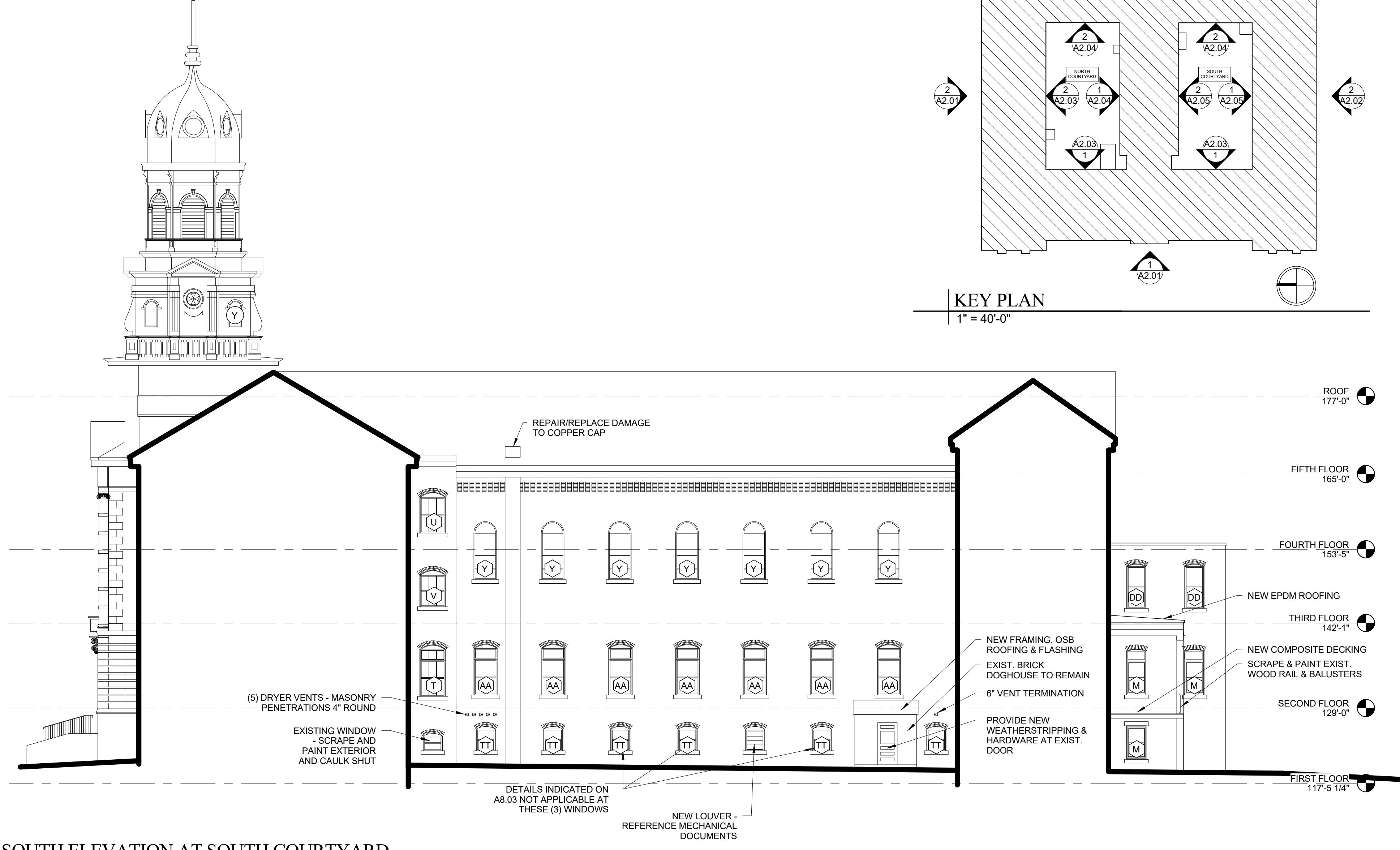
Prepared For:
MOTHERHOUSE LLC
 100 COMMERCIAL STREET
 PORTLAND, MAINE 04101

Consultant:
ARCHETYPE architects
 48 Union Wharf Portland, Maine 04101
 (207) 772-6022 ARCHETYPE@ARCHETYPEA.COM

Project:
MOTHERHOUSE SENIOR HOUSING
 605 STEVENS AVENUE
 PORTLAND, MAINE 04103

Revisions:
 Date: 15 FEB 2016
 Scale: As indicated
BUILDING ELEVATIONS

A2.05



2 | SOUTH ELEVATION AT SOUTH COURTYARD
 3/32" = 1'-0"



1 | NORTH ELEVATION AT SOUTH COURTYARD
 3/32" = 1'-0"