

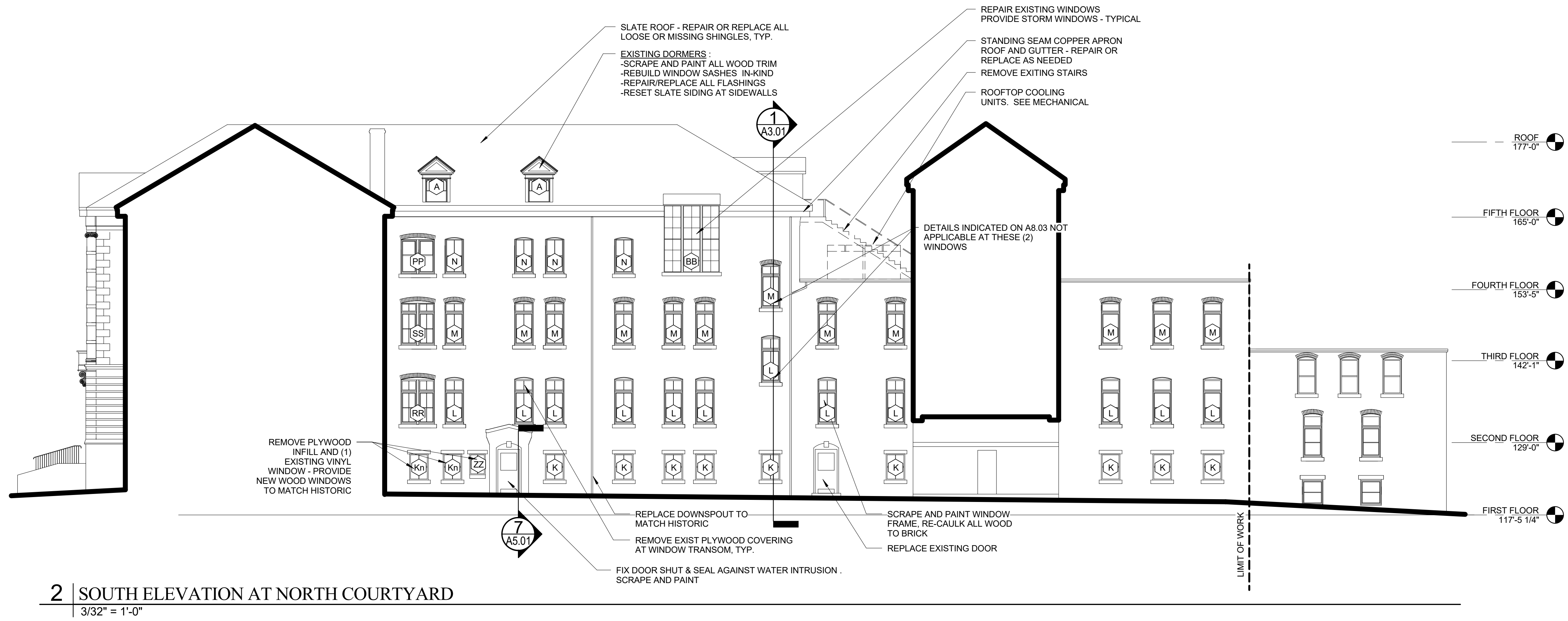
Prepared For:  
**MOTHERHOUSE LLC**  
 605 STEVENS AVENUE  
 PORTLAND, MAINE 04103

Consultant:  
**ARCHETYPE architects**  
 48 Union Wharf Portland, Maine 04101  
 (207) 772-0022 ARCHETYPE@ARCHETYPEPA.COM

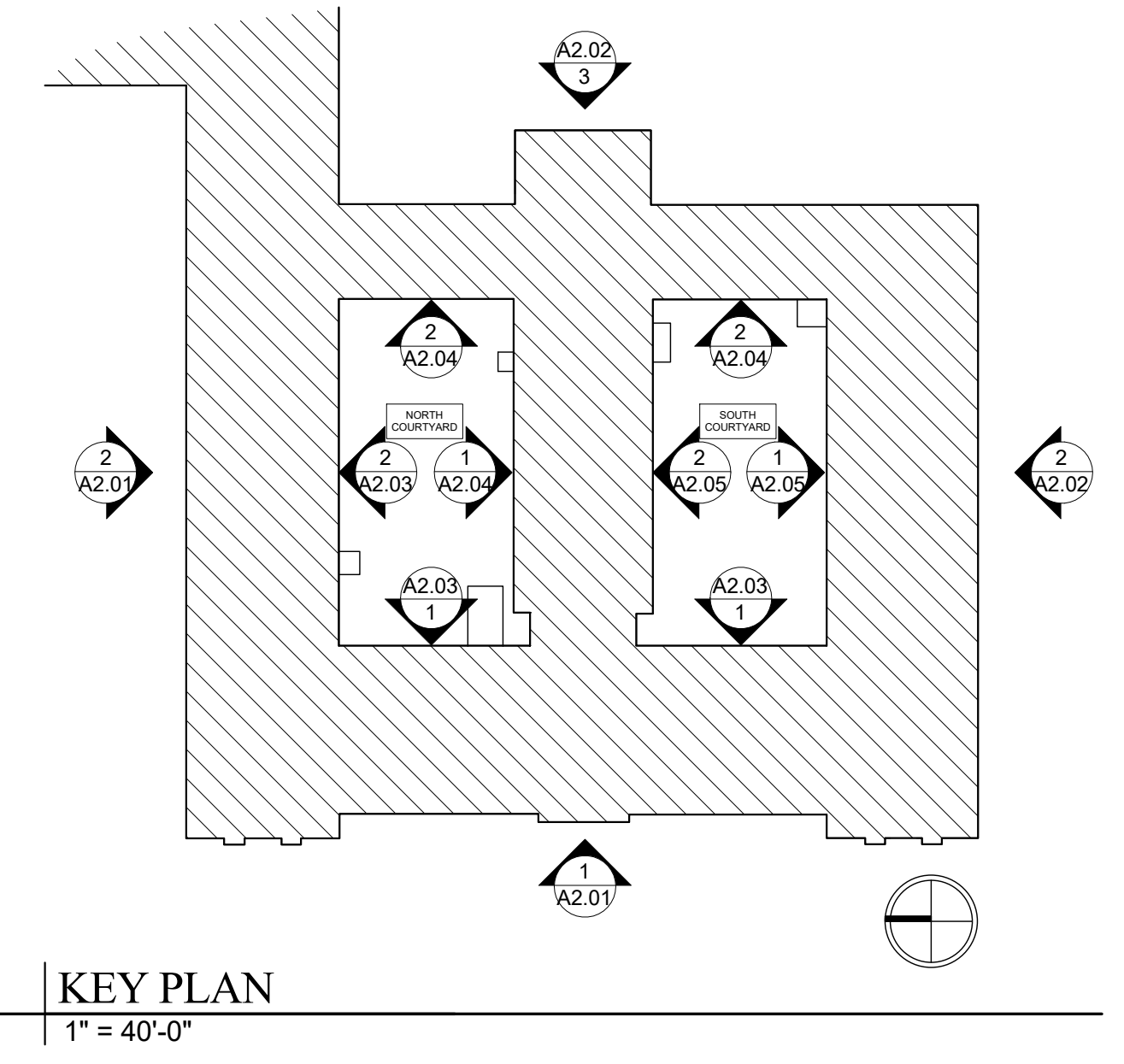
Project:  
**MOTHERHOUSE SENIOR HOUSING**  
 605 STEVENS AVENUE  
 PORTLAND, MAINE 04103

Revisions:  
 Date: 15 FEB 2016  
 Scale: As indicated  
**BUILDING ELEVATIONS**

**A2.03**

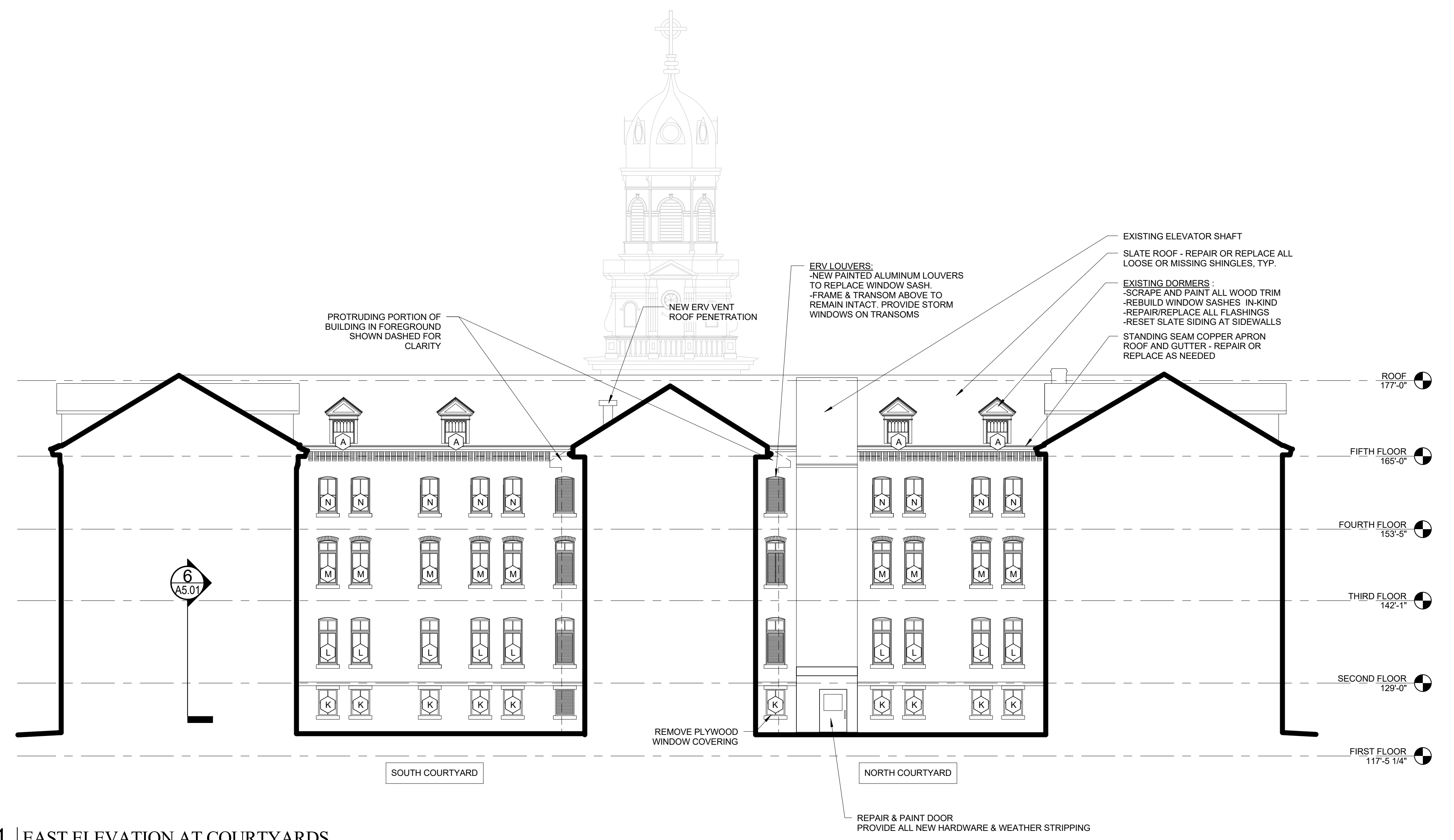


**2 | SOUTH ELEVATION AT NORTH COURTYARD**  
 3/32" = 1'-0"



**KEY PLAN**  
 1" = 40'-0"

**GENERAL NOTES:**  
 1. ALL EXISTING WINDOWS, UNLESS NOTED OTHERWISE, TO BE REFURBISHED, WEIGHTS REMOVED AND POCKETS FOAMED.  
 2. ALL WINDOWS TO RECEIVE NEW ALUMINUM STORM AND SCREEN WINDOWS.  
 3. REMOVE ALL PAINT FROM BRICK.  
 4. REMOVE ALL PLYWOOD PANELS FROM WINDOW TRANSOMS.



**1 | EAST ELEVATION AT COURTYARDS**  
 3/32" = 1'-0"