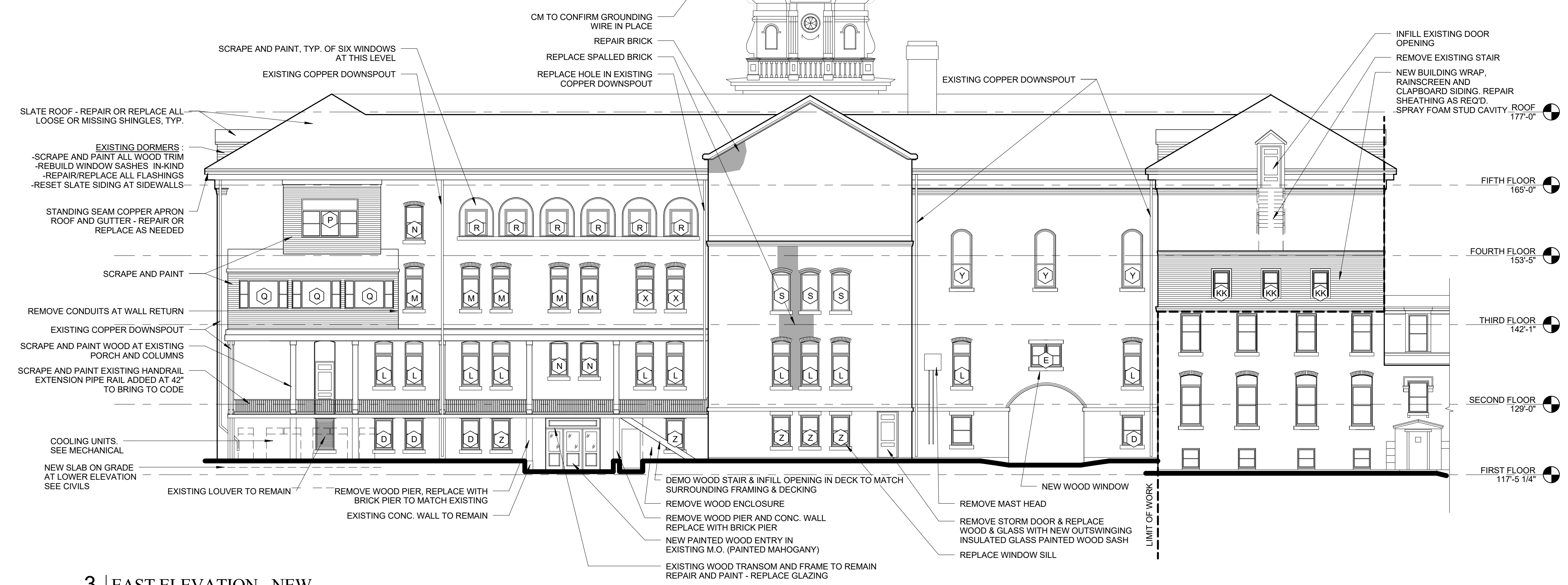


**KEY PLAN**  
1" = 40'-0"

- GENERAL NOTES:**
1. ALL EXISTING WINDOWS, UNLESS NOTED OTHERWISE, TO BE REFURBISHED, WEIGHTS REMOVED AND POCKETS FOAMED.
  2. ALL WINDOWS TO RECEIVE NEW ALUMINUM STORM AND SCREEN WINDOWS.
  3. REMOVE ALL PAINT FROM BRICK.
  4. REMOVE ALL PLYWOOD PANELS FROM WINDOW TRANSOMS.



**2 | SOUTH ELEVATION**  
3/32" = 1'-0"



**3 | EAST ELEVATION - NEW**  
3/32" = 1'-0"

- FIFTH FLOOR 166'-0"
- FOURTH FLOOR 153'-5"
- THIRD FLOOR 142'-1"
- SECOND FLOOR 129'-0"
- FIRST FLOOR 117'-5 1/4"