

AIR DEVICE PERFORMANCE SCHEDULE										
TAG	PANEL SIZE (IN)	NECK SIZE (IN)	AIRFLOW (CFM)	SP. LOSS (INUG)	THROU(L)	THROU(S)	Nc	BASIS OF DESIGN = METALAIR		
								DUCT CONN(IN)	PATTERN	MODEL
(A)	-	48x11	420	0.05	-	-	20	48x11	6-1" SLOTS	6610-6
(AA)	-	48x4	420	0.05	-	-	20	-	12", 15"	215D

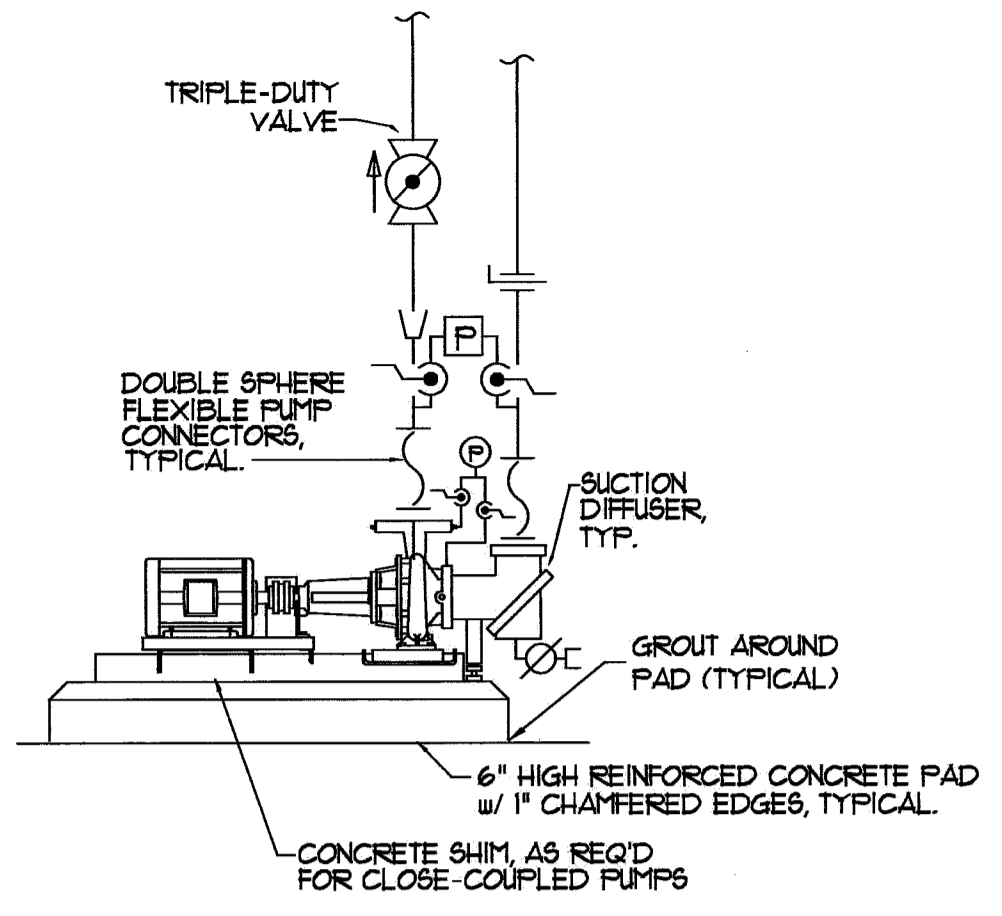
EXPANSION TANK PERFORMANCE SCHEDULE										
TAG	TANK VOLUME (GAL)	ACCEPTANCE VOLUME (GAL)	MIN. REQ'D ACCEPT. VOL. (GAL)	MAX. WORK'G. TEMPERATURE (DEG F)	MAX. WORK'G. PRESSURE (PSI)	WEIGHT (LBS)	BASIS OF DESIGN = TACO			
							MOUNTING	SERVICE	MODEL	
ET-1	132.0	61.0	-	240	125	425	FLOOR	HUS/R	CBX-500	
ET-2	132.0	61.0	-	240	125	425	FLOOR	HUS/R	CBX-500	
ET-3	132.0	61.0	-	240	125	425	FLOOR	HUS/R	CBX-500	
ET-4	92.0	43.0	-	240	125	330	FLOOR	IFUH	PAX-350	
ET-5	19.0	43.0	43.0	240	125	300	FLOOR	SOLAR	CBX-300	
ET-6	8.0	5.0	5.0	240	125	90	FLOOR	RADIANT SNOUMELT	CBX-30	

BFP PERFORMANCE SCHEDULE										
TAG	SIZE	FLOW RATE (GPM)	WPD (PSI)	MAX. WORK'G. TEMPERATURE (DEGREES F)	MAX. WORK'G. PRESSURE (PSI)	TESTABLE (Y) OR (N)	BASIS OF DESIGN = ZURN-WILKINS			
							BODY STYLE	SERVICE	MODEL	
BFP-3	3/4"	30.0	18.0	180	115	Y	RPZ	HUS/R FILL	915XL	
BFP-4	3/4"	30.0	18.0	180	115	Y	RPZ	SNOUMELT FILL	915XL	

PUMP PERFORMANCE SCHEDULE													
TAG	FLOW RATE (GPM)	HEAD (FT/UG)	IMPEL. SIZE	RPM	EFF %	ELECTRICAL REQUIREMENTS					BASIS OF DESIGN = TACO		
						HP	BHP	VFD	AMPS	V/PH/Hz	SERVICE	ARRANGEMENT	MODEL
CP-1	200	100	825	1160	61.0	7.5	5.31	Y	-	200/3/60	HUS/R	CLOSE COUPLED	CI-250B
CP-2	200	100	825	1160	61.0	7.5	5.31	Y	-	200/3/60	HUS/R	CLOSE COUPLED	CI-250B
CP-B1	55.0	30.0	5.67	1160	61.0	0.75	0.69	N	-	200/3/60	BOILER B-1	INLINE	1635
CP-B2	55.0	30.0	5.67	1160	61.0	0.75	0.69	N	-	200/3/60	BOILER B-2	INLINE	1635
CP-B3	55.0	30.0	5.67	1160	61.0	0.75	0.69	N	-	200/3/60	BOILER B-3	INLINE	1635
CP-B4	55.0	30.0	5.67	1160	61.0	0.75	0.69	N	-	200/3/60	BOILER B-4	INLINE	1635
CP-B2A	56.0	40.0	6.99	1150	53.0	1.5	1.01	N	-	200/3/60	IFUH-1/IFUH-2	INLINE	1619
CP-B4A	56.0	40.0	6.99	1150	53.0	1.5	1.01	N	-	200/3/60	IFUH-3/IFUH-4	INLINE	1619
CP-3	1.0	30.0	-	3450	-	1/6	-	N	2.0	120/1/60	DOM HU RECIRC	INLINE	2400-20*
CP-4	13.0	10.0	-	3250	-	1/8	-	N	1.16	120/1/60	SOLAR DUMP LOOP	INLINE	0011B*
CP-5	13.0	30.0	-	3450	-	1/3	-	N	3.2	120/1/60	SOLAR LOOP	INLINE	2400-45
CP-6	6.0	30.0	-	3450	-	1/6	-	N	2.0	120/1/60	DOM HU RECIRC	INLINE	2400-20

* - BRONZE OR STAINLESS STEEL CONSTRUCTION

BRAZED PLATE HEAT EXCHANGER PERFORMANCE SCHEDULE																	
TAG	SIDE	FLUID	FLOW RATE (GPM)	WPD (PSI)	EWT (F)	LWT (F)	CONN. (IN)	NOMINAL SURFACE (SF)	CAPACITY (MBH)	DESIGN PRESS. (PSIG)	TEST PRESS. (PSIG)	VOLUME (FT ³)	LxWxD (IN)	VALVE	NET WT. (LBS)	BASIS OF DESIGN - TACO	
																SERVICE	MODEL
HEX-1	HOT	HUS/R MAIN	6.5	0.4	110.0	140.0	1-1/2"	28.9	95.5	450.0	450.0	0.113	20.3x9.9x2.6	Y-2	37.1	RADIANT SNOUMELT	TFP10X20-24(1-1/2" TMPT)
	COLD	50% PROP GLYCOL	6.5	0.4	131.1	163.0	1-1/2"					0.123					



BASE MOUNTED PUMP PIPING SCHEMATIC
NT5

NOTE - SNOUMELT SYSTEM SHALL BE FILLED WITH 50% PROPYLENE GLYCOL, 50% WATER SOLUTION. SOLAR PREHEAT SYSTEM SHALL BE FILLED WITH GLYCOL SOLUTION PER MANUFACTURER'S RECOMMENDATIONS

CONTROL VALVE SCHEDULE					
TAG	FLOW RATE (GPM)	Cv	VALVE SIZE (IN)	TYPE	SERVICE
V-1	10	13	1/2"	2-WAY, 2-POSITION	CUH-1
V-2	6.5	4.4	3/4"	2-WAY, 2-POSITION	HEX-1

AIR SEPARATOR PERFORMANCE SCHEDULE									
TAG	FLOW RATE (GPM)	WPD (PSI)	Cv FACTOR	STRAINER (Y) OR (N)	MAX. WORK'G. TEMPERATURE (DEGREES F)	MAX. WORK'G. PRESSURE (PSI)	BASIS OF DESIGN = TACO		
							SERVICE	PIPE SIZE (IN)	MODEL
AS-1	6.5	15	-	N	240	150	SNOUMELT	1"	49-100AD

TEMPERATURE MIXING VALVE PERFORMANCE SCHEDULE									
TAG	FLOW RATE (GPM)	INLET CONNECTION (INCHES)	OUTLET CONNECTION (INCHES)	WPD (PSIG)	SET POINT (DEGREES F)	PROVIDE SPARE CARTRIDGE (Y) OR (N)	BASIS OF DESIGN - SYMMONS		
							SERVICE	ARRANGEMENT	MODEL
TMV-1	61.0	1-1/2"	2"	10.0	120	Y	DOMESTIC HU	-	5-1000
TMV-2	61.0	1-1/2"	2"	10.0	120	Y	DOMESTIC HU	-	5-1000

CABINET UNIT HEATER PERFORMANCE SCHEDULE									
TAG	OUTPUT (MBH)	FLOW RATE (GPM)	WPD (PSI)	AIRFLOW (CFM)	THROU	MTGHT. (FEET)	ELECTRICAL REQUIREMENTS	BASIS OF DESIGN = STERLING	
								SERVICE	ARRANGEMENT
CUH-1	21.0	10	0.11	420	-	-	HP AMPs V/PH/Hz	LOBBY	DUCTED CONCEALED

PROVIDE EACH UNIT W/ DISCONNECT SWITCH AND FILTERS.

GAS BOILER PERFORMANCE SCHEDULE									
TAG	INPUT (MBH)	HEATING CAPACITY (MBH)	NET I-B-R RATING (MBH)	FUEL	EFF. (%)	INTAKE VENT(IN)	ELECTRICAL REQUIREMENTS	BASIS OF DESIGN = HEAT TRANSFER PRODUCTS	
								SERVICE	MODEL
B-1	850.0	799.0	695.0	NAT GAS	94.0	6" / 6"	10.0	HUS/R	MODCON 850
B-2	850.0	799.0	695.0	NAT GAS	94.0	6" / 6"	10.0	HUS/R	MODCON 850
B-3	850.0	799.0	695.0	NAT GAS	94.0	6" / 6"	10.0	HUS/R	MODCON 850
B-4	850.0	799.0	695.0	NAT GAS	94.0	6" / 6"	10.0	HUS/R	MODCON 850

* BASED ON D.O.E. (DEPT. OF ENERGY) TEST PROCEDURE

INDIRECT-FIRED WATER HEATER PERFORMANCE SCHEDULE													
TAG	STORAGE (GALS)	INPUT (GPM)	WPD (PSI)	1ST HOUR 90°F RISE (GPH)	WORKING PRESSURE (PSIG)	INLET CU TEMP (DEG F)	INLET HU TEMP (DEG F)	STORAGE TEMP (DEG F)	ELECTRICAL REQUIREMENTS	BASIS OF DESIGN - SUPERSTOR			
										SERVICE	MODEL		
IFUH-1	119.0	40.0	25.0	637.0	150.0	50.0	180.0	140.0	-	-	DOM HU	SSU-119-C	
IFUH-2	119.0	40.0	25.0	637.0	150.0	50.0	180.0	140.0	-	-	DOM HU	SSU-119-C	
IFUH-3	119.0	40.0	25.0	637.0	150.0	50.0	180.0	140.0	-	-	DOM HU	SSU-119-C	
IFUH-4	119.0	40.0	25.0	637.0	150.0	50.0	180.0	140.0	-	-	DOM HU	SSU-119-C	

FAN PERFORMANCE SCHEDULE													
TAG	AIRFLOW (CFM)	T.S.P (INUG)	NOISE (SONES)	RPM	DRIVE	ELECTRICAL REQUIREMENTS					BASIS OF DESIGN = GREENHECK		
						HP	BHP	WATTS	AMPS	V/PH/Hz	SERVICE	ARRANGEMENT	MODEL
EF-1	500	0.375	3.7	1008	BELT	1/4	0.06	-	-	120/1/60	TOILET EXHAUST	DOUNBLAST	GB-101-4
EF-2	600	0.375	4.1	1065	BELT	1/4	0.071	-	-	120/1/60	KITCHEN EXHAUST	DOUNBLAST	GB-101-4
EF-3	1270	0.125	7.1	1550	DIRECT	1/8	0.10	-	-	120/1/60	MECH RM EXHAUST	SIDEWALL	SEI-12-432-DB*

* - PROVIDE WITH WALL COLLAR, DISCHARGE DAMPER AND OSHA MOTOR GUARD

MECHANICAL AND PLUMBING SYMBOLS AND ABBREVIATIONS LEGEND

NOTE - USE SYMBOLS AND ABBREVIATIONS AS APPLICABLE FOR THIS MECHANICAL DRAWING SET. SOME SYMBOLS AND ABBREVIATIONS IN THIS LEGEND MAY NOT APPLY.

SYMBOL	DESCRIPTION	SYMBOL	DESCRIPTION	SYMBOL	DESCRIPTION	ABBREVIATION	DESCRIPTION	ABBREVIATION	DESCRIPTION	ABBREVIATION	DESCRIPTION	ABBREVIATION	DESCRIPTION
CA	COMPRESSED AIR PIPING (CA)	⊘	BACKFLOW PREVENTER (BFP)	⊕	PRESSURE GAGE WITH GAGE COCK	AAY	AUTOMATIC AIR VENT	EDB	ENTERING DRY BULB	I-B-R	INSTITUTE OF BOILER AND RADIATOR MANUFACTURERS	RLA	RUNNING LOAD AMPs
C	CONDENSATE DRAIN PIPING (C)	⊘	CHECK VALVE	⊖	THERMOMETER IN WELL	AD	ACCESS DOOR	EDC*	ELECTRIC DUCT COIL TAG	IFUH*	INDIRECT FIRED WATER HEATER TAG	RPM	REVOLUTIONS PER MINUTE
CTR	COOLING TOWER RETURN PIPING (CTR)	⊘	BALANCING VALVE (ADJUSTABLE)	⊗	WATER FLOW SWITCH	AFF	ABOVE FINISHED FLOOR	EER	ENERGY EFFICIENCY RATIO	IN	INCHES	RFs	REDUCED PRESSURE ZONE
CTS	COOLING TOWER SUPPLY PIPING (CTS)	⊘	AUTOMATIC FLOW CONTROL VALVE	⊗	PRESSURE SWITCH OR SENSOR	AHL*	AIR HANDLING UNIT TAG	EF*	EXHAUST FAN TAG	L*	LOUVER TAG	RTU	ROOM TEMPERATURE SENSOR
CUH	CHILLED WATER RETURN PIPING (CUH)	⊘	RELIEF VALVE (RV)	⊗	EMERSION TEMPERATURE SENSOR	AMS	AIRFLOW MONITORING STATION	EFF	EFFICIENCY	LAT	LEAVING AIR TEMPERATURE	RV	RELIEF VALVE
CUH	CHILLED WATER SUPPLY PIPING (CUH)	⊘	BALL VALVE	⊗	DUCT MOUNTED SMOKE DETECTOR	AMPS	AMPERES	ESP	EXTERNAL STATIC PRESSURE	LB	POUNDS	RUL	RAINWATER LEADER
FOR	FUEL OIL RETURN PIPING (FOR)	⊘	BALL VALVE	⊗	ROOM TEMPERATURE SENSOR	AP	ACCESS PANEL	ET*	EXPANSION TANK TAG	LTHUS/R	LOW TEMPERATURE HOT WATER	SA	SUPPLY AIR
FOS	FUEL OIL SUPPLY PIPING (FOS)	⊘	3/4" BALL VALVE WITH 3/4" HOSE END	⊗	THERMOSTAT OR SENSOR ON WALL	APD	AIR PRESSURE DROP	EUB	ENTERING WET BULB	LRA	LOCKED ROTOR AMPs	SAN	SANITARY (DRAIN & WASTE)
G	GAS PIPING (G)	⊘	GATE VALVE	⊗	TSTAT OR SENSOR W/ TAMPERPROOF GUARD	AS*	AIR SEPARATOR TAG	EUT	ENTERING WATER TEMPERATURE	LUCCO	LOW WATER CUTOFF	SD	SMOKE DAMPER
HUR	HOT WATER RETURN PIPING (HUR)	⊘	PRESSURE REDUCING VALVE	⊗	NOTE TAG (NUMBER)	ATC	AUTOMATIC TEMPERATURE CONTROL	EXG	EXISTING	LUT	LEAVING WATER TEMPERATURE	SEER	SEASONAL ENERGY EFFICIENCY RATIO
HUS	HOT WATER SUPPLY PIPING (HUS)	⊘	FUSIBLE VALVE	⊗	TURNING VANES	B*	BOILER TAG	EXH	EXHAUST	MAX	MAXIMUM	SF	SUPPLY FAN
RL	REFRIGERANT LIQUID PIPING (RL)	⊘	2-WAY CONTROL VALVE	⊗	DUCT W/MANUAL DAMPER	BHP	BRAKE HORSEPOWER	FCO	FLOOR CLEANOUT	MBH	THOUSANDS OF BTU PER HOUR	SP	STATIC PRESSURE
RG	REFRIGERANT GAS PIPING (RG)	⊘	3-WAY CONTROL VALVE	⊗	DUCT W/FLEXIBLE CONNECTION (FC)	BTH	BRITISH THERMAL UNIT PER HOUR	FD	FIRE DAMPER	MCA	MINIMUM CIRCUIT AMPACITY	SQFT	SQUARE FEET
RSAN	SANITARY PIPING BELOW FLOOR (RSAN)	⊘	3-WAY CONTROL VALVE (TOP VIEW)	⊗	LAPPED DUCT	CFM	CUBIC FEET PER MINUTE	FD*	FLOOR DRAIN TAG	MIN	MINIMUM	ΔT	TEMPERATURE DIFFERENTIAL
RSAN	SANITARY PIPING ABOVE FLOOR (RSAN)	⊘	4-WAY CONTROL VALVE (TOP VIEW)	⊗	DUCT W/ACOUSTIC LINING	CONV*	CONVECTOR TAG	FLA	FULL LOAD AMPs	NC	NOISE CRITERION	TEMP.	TEMPERATURE
RWL	RAINWATER LEADER ABOVE SLAB (RWL)	⊘	2 BUTTERFLY VALVES W/ANGLE ACTUATOR	⊗	DUCT W/SQUARE-TO-ROUND TRANSITION	CP*	CABINET UNIT HEATER TAG	FLA	FLOOR LEADER ABOVE SLAB	NIC	NOT IN CONTRACT	TCP	TEMPERATURE CONTROL PANEL
CW	COLD WATER PIPING (CW)	⊘	CIRCULATING PUMP TAG	⊗	FLEXIBLE DUCT	CUH*	CHILLED WATER SUPPLY AND RETURN	FOS	FUEL OIL SUPPLY	NTS	NOT TO SCALE	TMV*	THERMOSTATIC MIXING VALVE TAG
HU	HOT WATER PIPING (HU)	⊘	MOTOR OPERATED DAMPER	⊗	PIPE FLANGE	Cv	VALVE COEFFICIENT	FFH	FROST PROOF HOSE BIBB	OA	OUTSIDE AIR	TSP	TOTAL STATIC PRESSURE
RHW	RECIRCULATED HOT WATER PIPING (RHW)	⊘	PIPE CAP	⊗	PUMP WITH FLANGES	CW	COLD WATER	FFM	FEET PER MINUTE	OB	OPPOSED BLADE DAMPER	TYP	TYPICAL
ELB UP	ELBOW UP	⊘	UNION	⊗	PIPE FLANGE	CHUS/R	CHILLED WATER SUPPLY AND RETURN	FS*	FLOOR SINK TAG	OD	OUTSIDE DIAMETER	UH*	UNIT HEATER TAG
ELB DOWN	ELBOW DOWN	⊘	PIPE FLANGE	⊗	PUMP WITH FLANGES	DB	DRY BULB	FT	FEET	OED	OPEN ENDED DUCT	VB	VACUUM BREAKER
TEE UP	PIPE TEE UP	⊘	BASE MOUNTED PUMP	⊗	PIPE FLANGE	DB RE	DECIBELS RELATIVE TO DOUBLE CHECK	FT*	FINTUBE RADIATION TAG	OPD	OVERCURRENT PROTECTIVE DEVICE	VFD	VARIABLE FREQUENCY INVERTER DRIVE
TEE DOWN	PIPE TEE DOWN	⊘	CARTRIDGE TYPE INLINE PUMP	⊗	PIPE FLANGE	DC	DOUBLE CHECK	GA	GAGE	P*	PLUMBING FIXTURE TAG	VTR	VENT THRU ROOF
REDUCER	PIPE REDUCER	⊘	VERTICAL INLINE PUMP	⊗	PIPE FLANGE	DCA	DOUBLE CHECK ATMOSPHERIC DEGREES FAHRENHEIT	GAL	GALLONS	PSIA	POUNDS PER SQUARE INCH ABSOLUTE	V/PH/Hz	VOLTS/PHASES/HERTZ
WITH GUIDE	PIPE WITH GUIDE	⊘	FLEXIBLE PIPE CONNECTION (FC)	⊗	PIPE FLANGE	DCG	DOUBLE CHECK GALLONS PER HOUR	GPH	GALLONS PER HOUR	PSIG	POUNDS PER SQUARE INCH GAGE	WB	WET BULB
WITH ANCHOR	PIPE WITH ANCHOR	⊘	RETURN GRILLE	⊗	PIPE FLANGE	DEG F	DEGREES FAHRENHEIT	GPM	GALLONS PER MINUTE	FVC	POLYVINYL CHLORIDE (PIPE)	WCO	WALL CLEANOUT