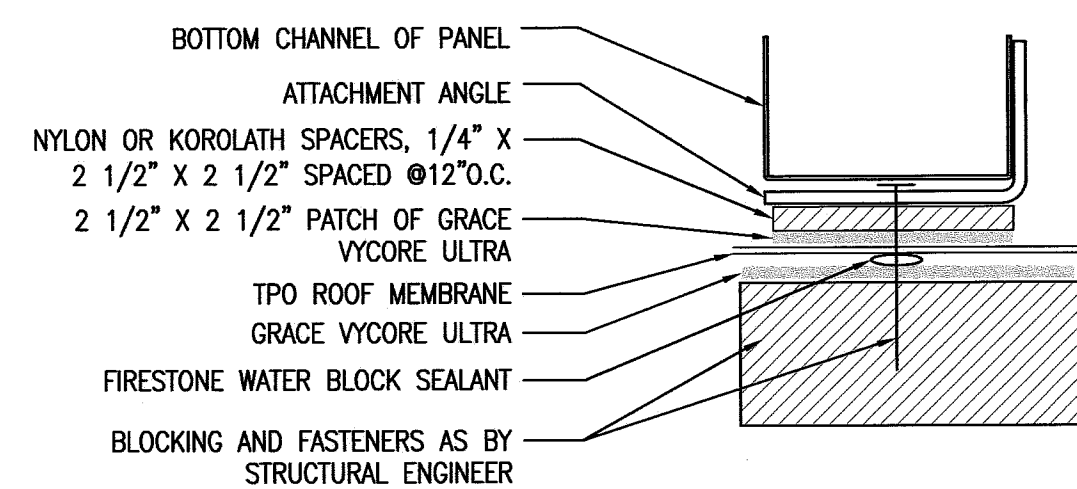


1

TYPICAL WINDOW SECTION FLOORS 2-11

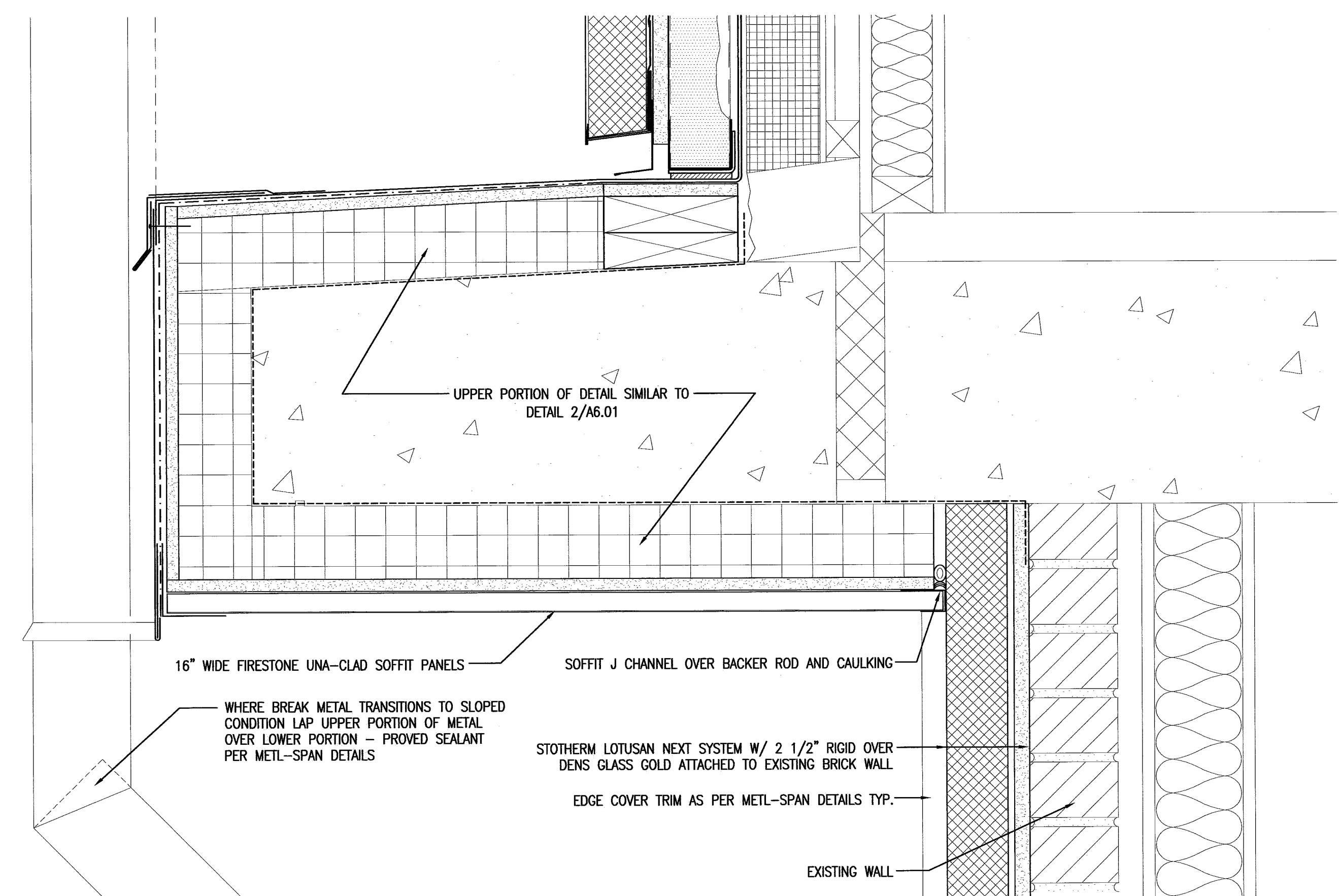
SCALE: 3"=1'-0"



2

PANEL SEAT WEATHER PROOFING DETAIL

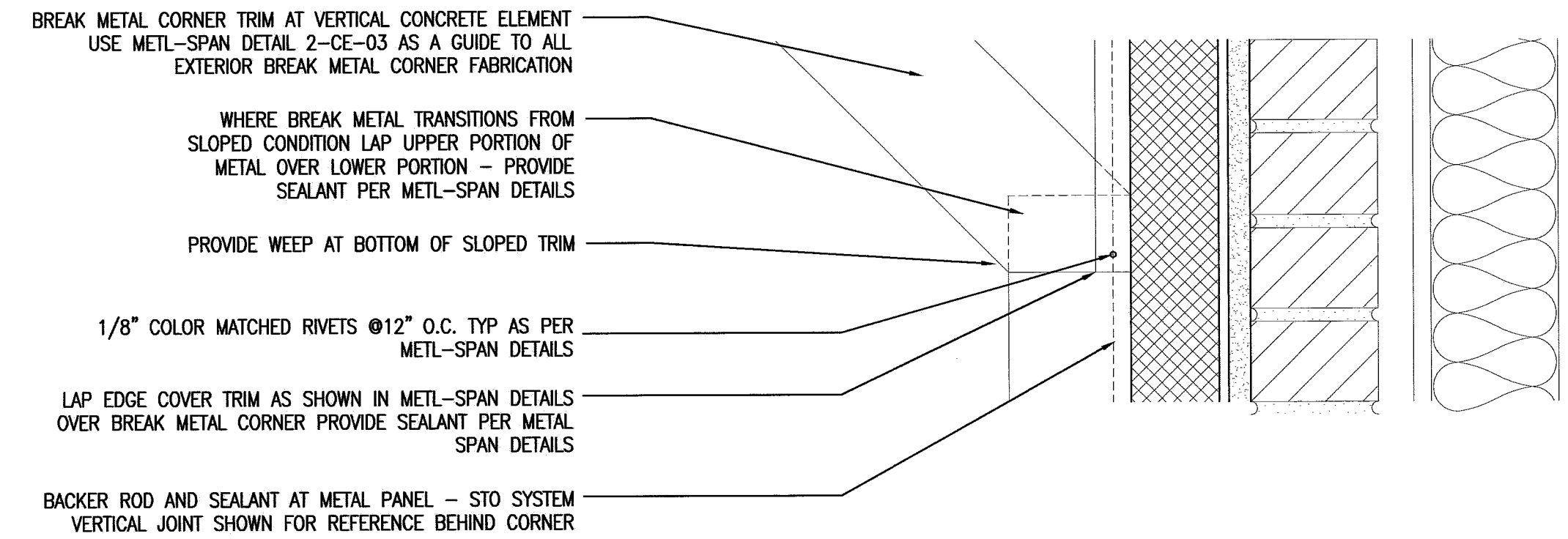
SCALE: 6"=1'-0"



3

FIRST TO SECOND FLOOR BEAM DETAIL

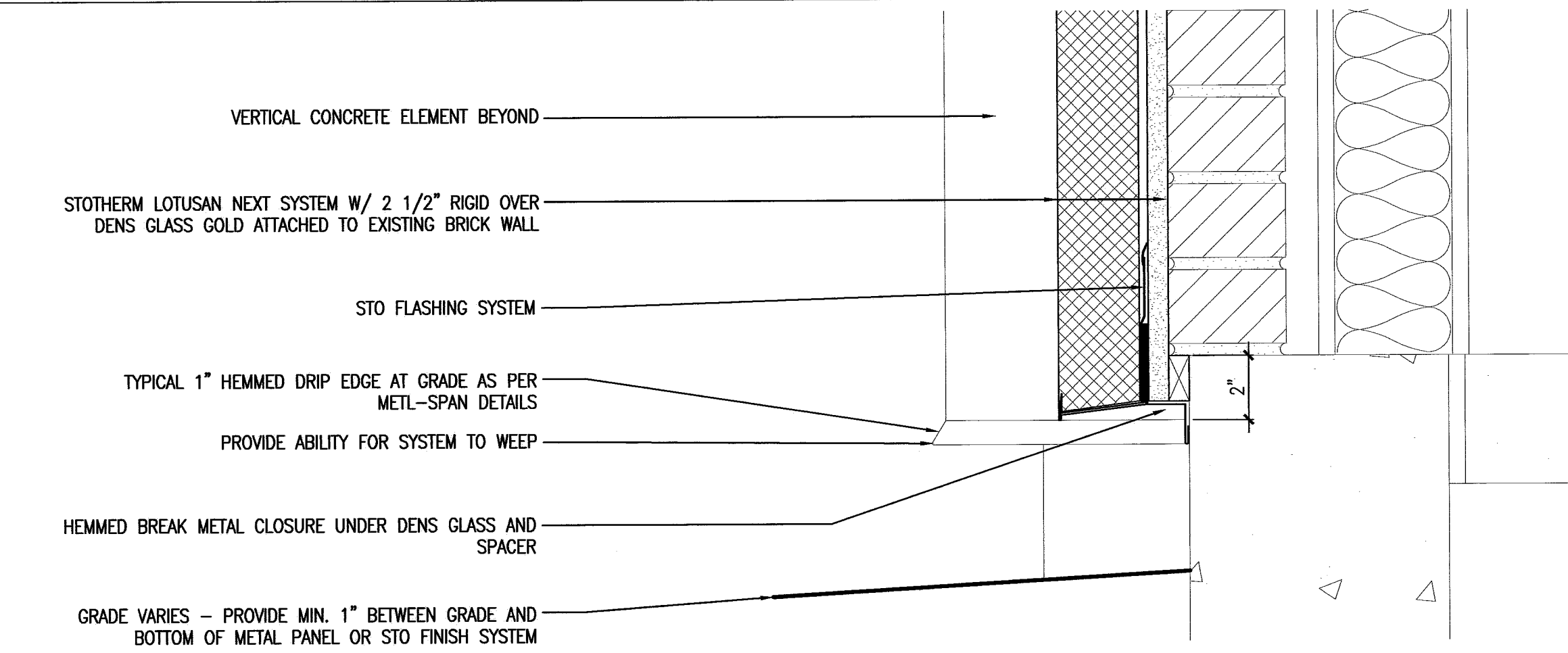
SCALE: 3"=1'-0"



4

FLASHING DETAIL @ SLOPED SURFACE TO VERTICAL TRANSITION

SCALE: 3"=1'-0"



5

GROUND LEVEL DETAIL - DIRECT APPLIED TO BRICK

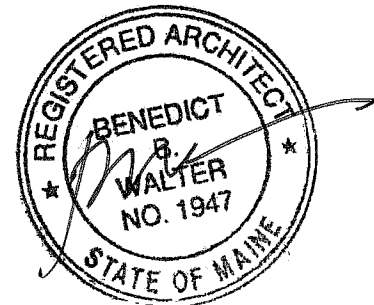
SCALE: 3"=1'-0"

CWS

CWS Architects

Architecture
Space Planning
Value Design

434 Cumberland Avenue
Portland, ME 04101
Phone: (207)774-4441
Fax: (207)774-4016
www.CWSarch.com



Owner:
Diocesan Bureau
of Housing LLC
PO BOX 11559
Portland, Maine 04104-7559
TEL. 207-773-6471

Client:

Deering Pavilion
Renovations

Portland, Maine

Project No: 08441

Drawing Title:

EXTERIOR
DETAILS

Scale: AS NOTED

Date: May 20, 2010

Revisions:

- △
- △
- △
- △
- △
- △

Drawing Number:

A6.02

BEING DRAWING