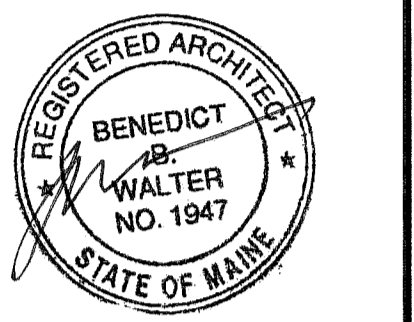




CWS  
Architects

Architecture  
Space Planning  
Value Design

434 Cumberland Avenue  
Portland, ME 04101  
Phone: (207)774-4441  
Fax: (207)774-4016  
www.CWSarch.com



Owner:  
**Diocesan Bureau of Housing LLC**  
PO BOX 11559  
Portland, Maine 04104-7559  
TEL. 207-773-6471

Client:

**Deering Pavilion Renovations**

Portland, Maine

Project No: 08441

Drawing Title:  
**REMOVALS SOUTH ELEVATION**

Scale: AS NOTED  
Date: May 20, 2010

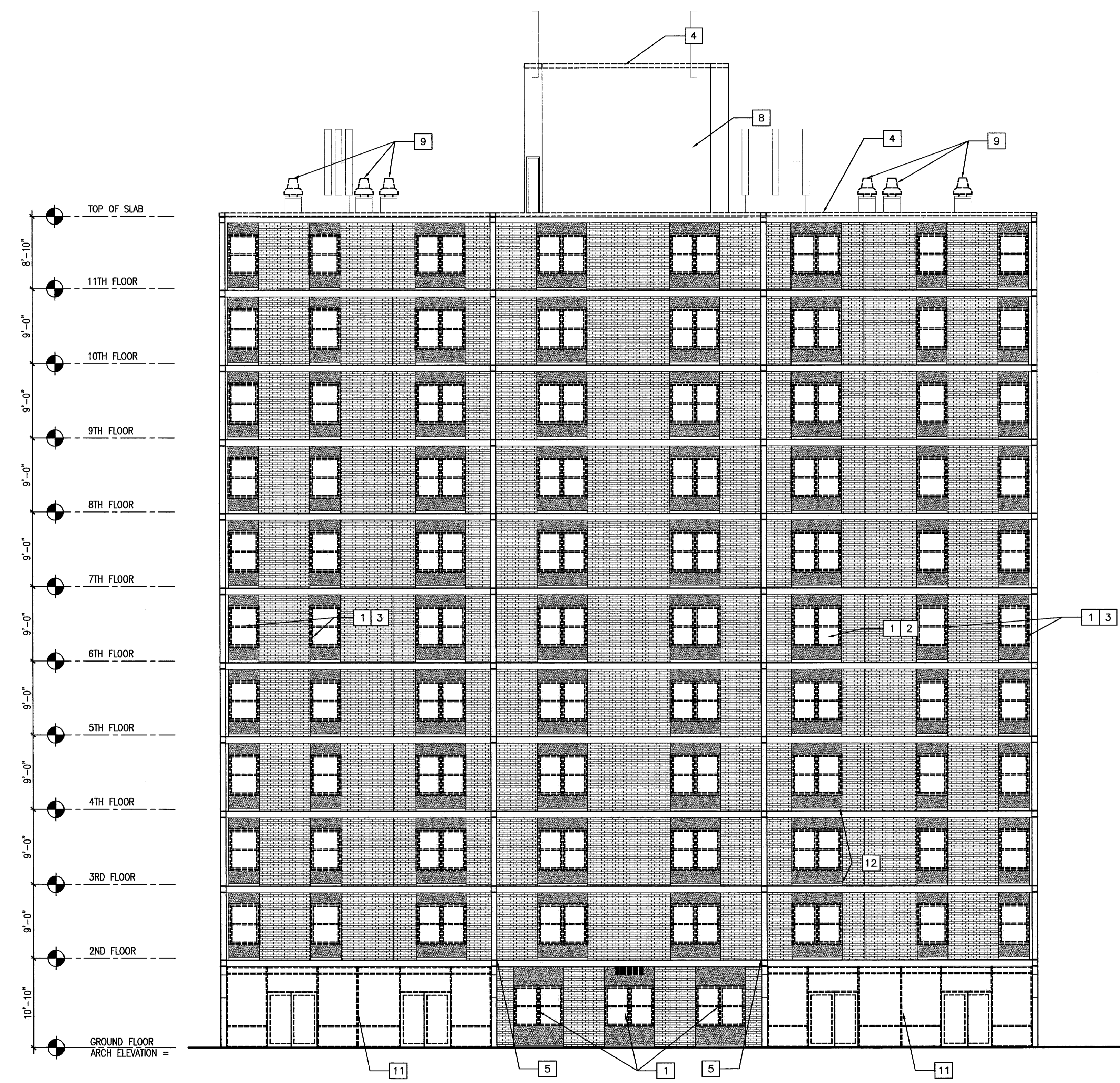
- Revisions:
- ▲
  - ▲
  - ▲
  - ▲
  - ▲
  - ▲

Drawing Number:

**D3.04**

**REMOVALS NOTES:**

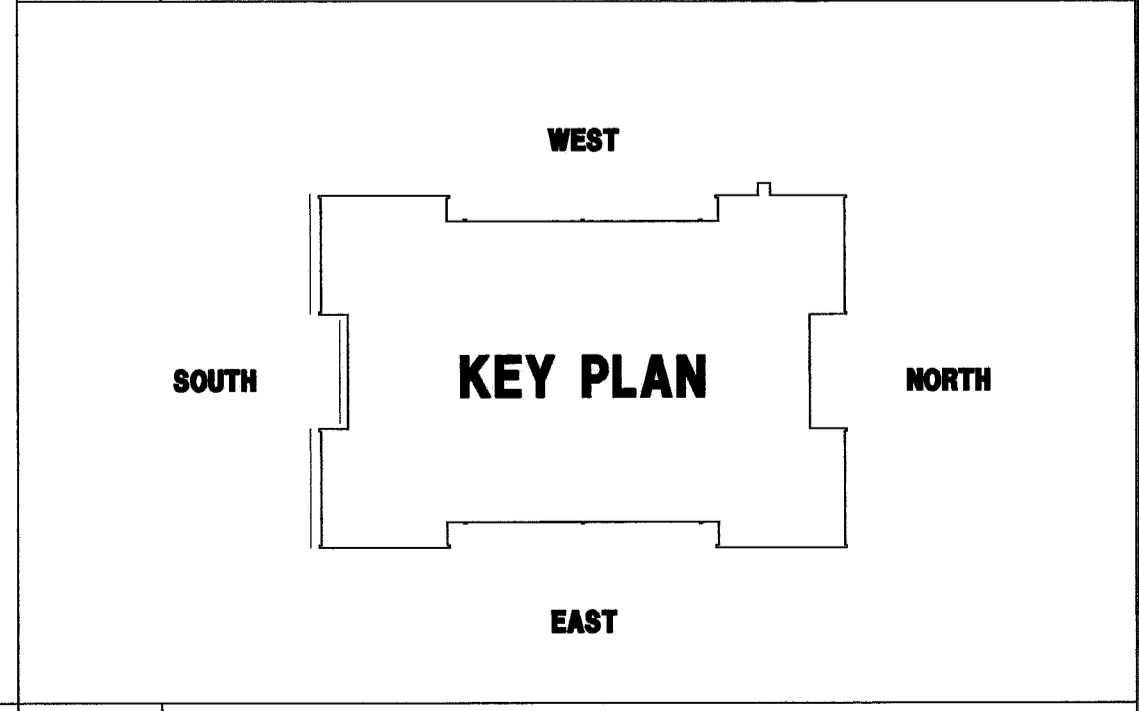
- 1 REMOVE WINDOW AND WINDOW ASSEMBLIES COMPLETE - REMOVE ANY PREVIOUSLY INSTALLED WINDOW TRACK SO THAT THE WOOD FRAMING OF EACH WINDOW IS EXPOSED, HEAD JAMBS AND SILL
- 2 REMOVE ANY WINDOW TRIM FASTENERS OR FLASHING AT EXISTING OPENING FLOORS 2-11
- 3 REMOVE WINDOW ASSEMBLIES COMPLETE TO CONCRETE SURFACE WHERE APPLICABLE FLOORS 2-11
- 4 REMOVE ALL COPING, FLASHING AND ATTACHMENT HARDWARE AT ROOF PERIMETER - PROVIDE TEMPORARY WEATHER PROTECTION AS NEEDED
- 5 REMOVE AND STORE LIGHT FIXTURES FOR REINSTALLATION TYPICAL
- 6 REMOVE AND STORE FIRE ALARM HARDWARE FOR REINSTALLATION - COORDINATE TEMPORARY SYSTEMS AND FIXTURES WITH AUTHORITY HAVING JURISDICTION BEFORE REMOVAL
- 7 REMOVE EXISTING CANVAS ENTRY CANOPY
- 8 REMOVE EXISTING METAL SIDING ON 12TH FLOOR - COORDINATE WORK WITH OWNERS OF LEASED EQUIPMENT ATTACHED TO THIS PORTION OF THE BUILDING BEFORE PROCEEDING WITH WORK.
- 9 REFERENCE MECHANICAL DRAWINGS FOR VENTS, LOUVERS, FAN AND HOOD REMOVAL AND REPLACEMENT
- 10 REMOVE FAN AND HOOD
- 11 REMOVE STOREFRONT COMPLETE
- 12 REMOVE EDGE OF BRICK BELOW EACH WINDOW FLUSH WITH PANEL TYP.



**3 SOUTH ELEVATION REMOVALS**

SCALE: 1/8" = 1'-0"

**2 NOTES** SCALE: NTS



**1 KEY PLAN** SCALE: NTS