



**Deering Pavilion
880 Forest Ave
Portland, Me**

SUBMITTAL COVER SHEET

HVAC ERV Units and Coils

Date: March 17, 2015

**Contractor:
Dicon
54 Warren Ave
Portland, ME 04103**

**Architects
Richard Curtis & Associates
PO Box 9739-1150
Portland, Me 04104**

HE1XINH



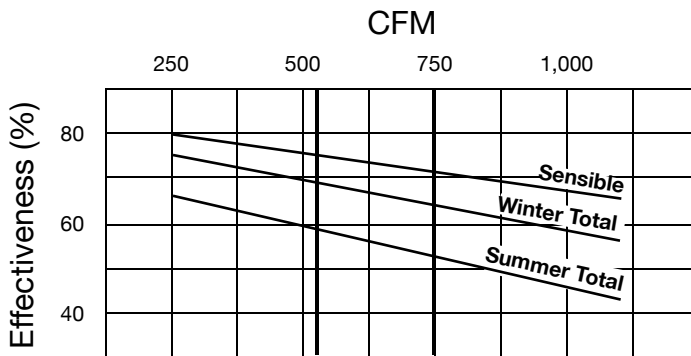
Indoor Unit



Specifications

Ventilation Type: Static Plate, Heat and Humidity Transfer					
Typical Airflow Range: 250-925 CFM					
AHRI 1060 Certified Core: One L125-00					
Airflow Rating Points (for AHRI): 750 CFM and 563 CFM					
Number Motors: Two direct drive blower/motor packages					
V	HZ	Phase	FLA (per motor)	Min. Cir. Amps	Max. Overcurrent Protection Device
115	60	Single	9.0	20.3	25
208-230	60	Single	4.5	10.1	15
277	60	Single	3.9	8.8	15
208-230	60	Three	1.7-2.3	5.2	15
460	60	Three	1.15	2.6	15
Standard Features: Non-fused Disconnect 24 VAC Transformer/Relay Package					
Filters: Two total, MERV 8, 2" pleated, 20" x 20" nominal size					
Weight: 211 lbs (unit), 300 lbs (shipping weight, on pallet)					
Shipping Dimensions: 62" L x 48" W x 40" H					
Options: ECM Motor – Two, 115V or 208-230V 0.75 hp (Single Phase) Fused Disconnect Double Wall Construction Motorized Isolation Dampers, OA, EA or both airstreams Factory Mounted Filter Alarms (2) Independent Blower Control Accessories: Wall Caps Back Draft Dampers					

G5 Performance



*At AHRI 1060 standard conditions
(See certified data on page 73 for core components.)

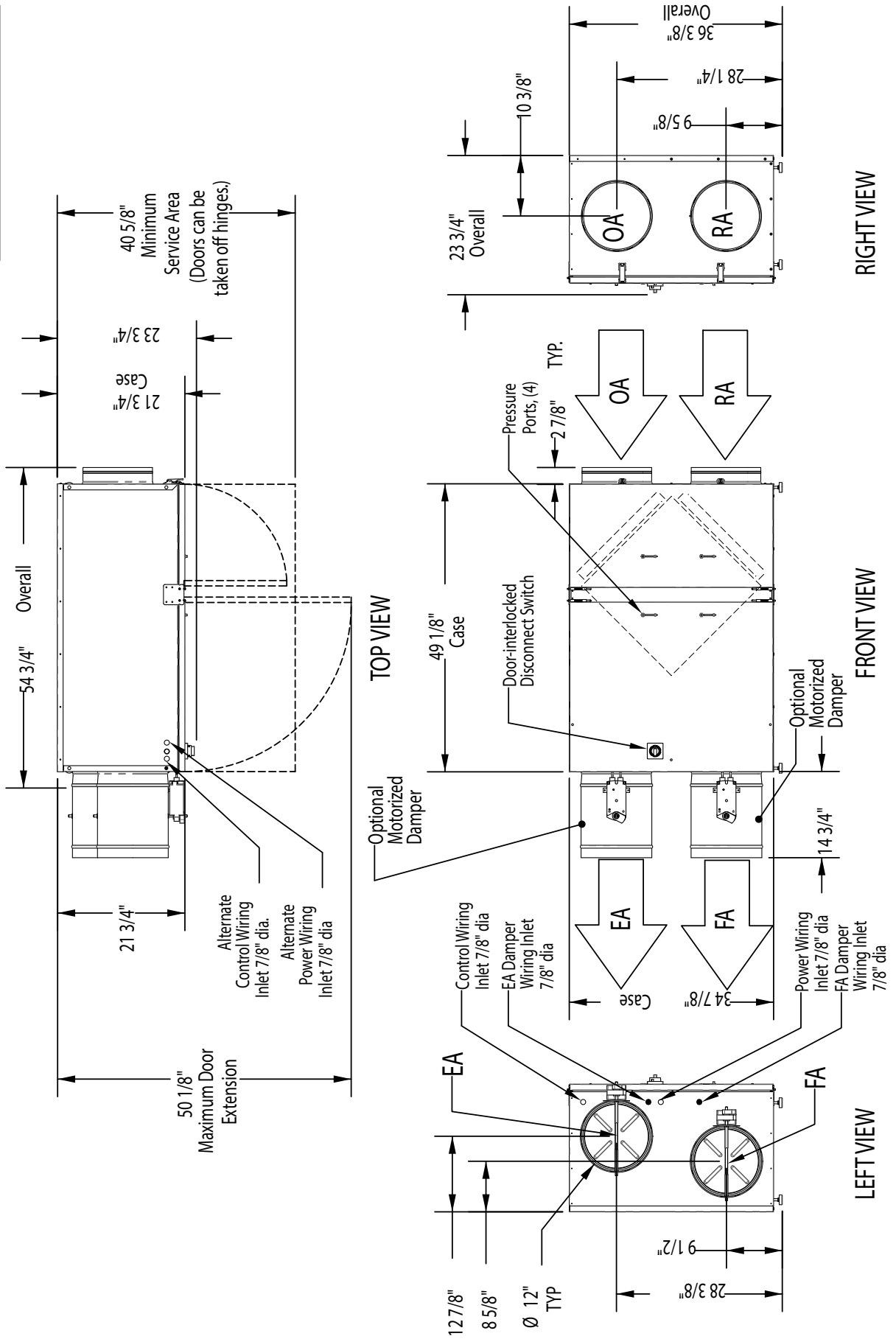
Airflow Performance

Motor HP Phase	External Static Pressure (Inches Water Column)						
	0.0	0.25	0.5	0.75	0.9	1.25	1.5
0.75 Single Phase	970 CFM 1,490 Watts	925 CFM 1,375 Watts	860 CFM 1,270 Watts	795 CFM 1,160 Watts	750 CFM 1,090 Watts	635 CFM 950 Watts	480 CFM 825 Watts
0.75 Three Phase	970 CFM 1,246 Watts	925 CFM 1,158 Watts	860 CFM 1,039 Watts	795 CFM 928 Watts	750 CFM 856 Watts	635 CFM 691 Watts	480 CFM 509 Watts

Note: Watts is for the entire unit (two motors).

HE1XINH Unit Dimensions

EA: Exhaust Air to outdoors
 OA: Outdoor Air intake
 RA: Room Air to be exhausted
 FA: Fresh Air to inside



Customer:	F.W. Webb: Anne Charpentier	Date:	2/23/2015
Contact:	Anne Charpentier	From:	Jamie Fogg
Telephone:	1-207-780-1492	Company:	Air Control Products
Cell:		Return Tel:	1-781-933-3442
Fax:	1-207-780-0462	Return Fax:	1-781-933-3521
Job:	Deering Pavillion	Email:	jamie@acpcoils.com
Quote #:	5564		

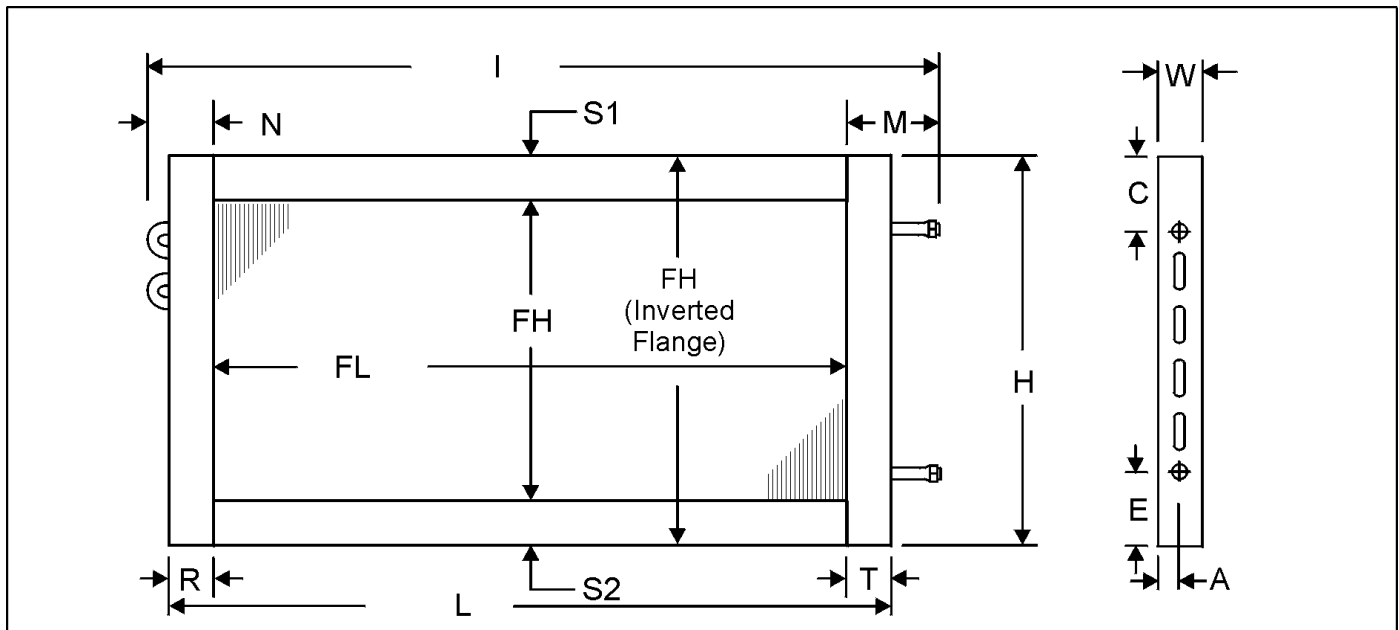
Item	Coils Per Bank	FA SQ FT	Air Flow ft ³ /min	Face Vel. ft/min	Fin Fouling Factor ft ² ·°F-hr/BTU	Ent Air DB/WB °F	Lvg Air DB/WB °F	Capacity Total MBH	APD "H2O	Fluid Type	Fluid Fouling Factor ft ² ·°F-hr/BTU	Fluid Temp. Ent/Lvg °F	FPD FT H2O	Fluid Vel	Fluid Flow gal/min	Model FHxFL Number IN
HC-1	1	1.33	S- 540.0	405.0	0.00	40.00	76.15	21.17	0.05	Water	0.00	160.0/138.4	0.99	2.13	2.00	5BS1101A 12.00 x 16.00

Customer: F.W. Webb: Anne Charpentier
 Contact: Anne Charpentier
 Telephone: 1-207-780-1492
 Cell:
 Fax: 1-207-780-0462
 Job: Deering Pavillion
 Quote #: 5564

Date: 2/24/2015
 From: Jamie Fogg
 Company: Air Control Products
 Return Tel: 1-781-933-3442
 Return Fax: 1-781-933-3521
 Email: jamie@acpcoils.com

ITEM	QTY	MODEL NUMBER						HAND
		TYPE	FPI	ROWS	FIN	FH (IN)	FL (IN)	
HC-1 & 2	2	5BS	11	01	A	12.00	16.00	N/A

MATERIALS OF CONSTRUCTION		OPTIONS				
Fins	0.0075 Aluminum	Coating	None		TurboSpirals	No
 Tubes	0.020 Copper	Casing Type	Flanged		Moisture Eliminator	No
Casing	Galvanized Steel	Vent & Drain	None		Mounting Holes	No
Conn. Material	Copper				Label Kit	No
Conn. Type	Sweat				Drain Headers	No
Conn. Size	0.63				Tube Ferrules	No
Weight (LBS)	20.0					



DIMENSIONAL DATA(IN)																
A	B	C	D	E	F	H	I	J	L	M	N	R	S1	S2	T	W
1.00	0.00	2.25	0.00	2.25	0.00	15.00	20.12	0.00	19.00	2.12	2.00	1.50	1.50	1.50	1.50	2.00

NOTES:

GENERAL NOTES:

1. All dimensions are in (in)
2. Manually verifying dimensions is highly recommended.
3. The water should enter the coil through the lower connection for proper fluid flow.