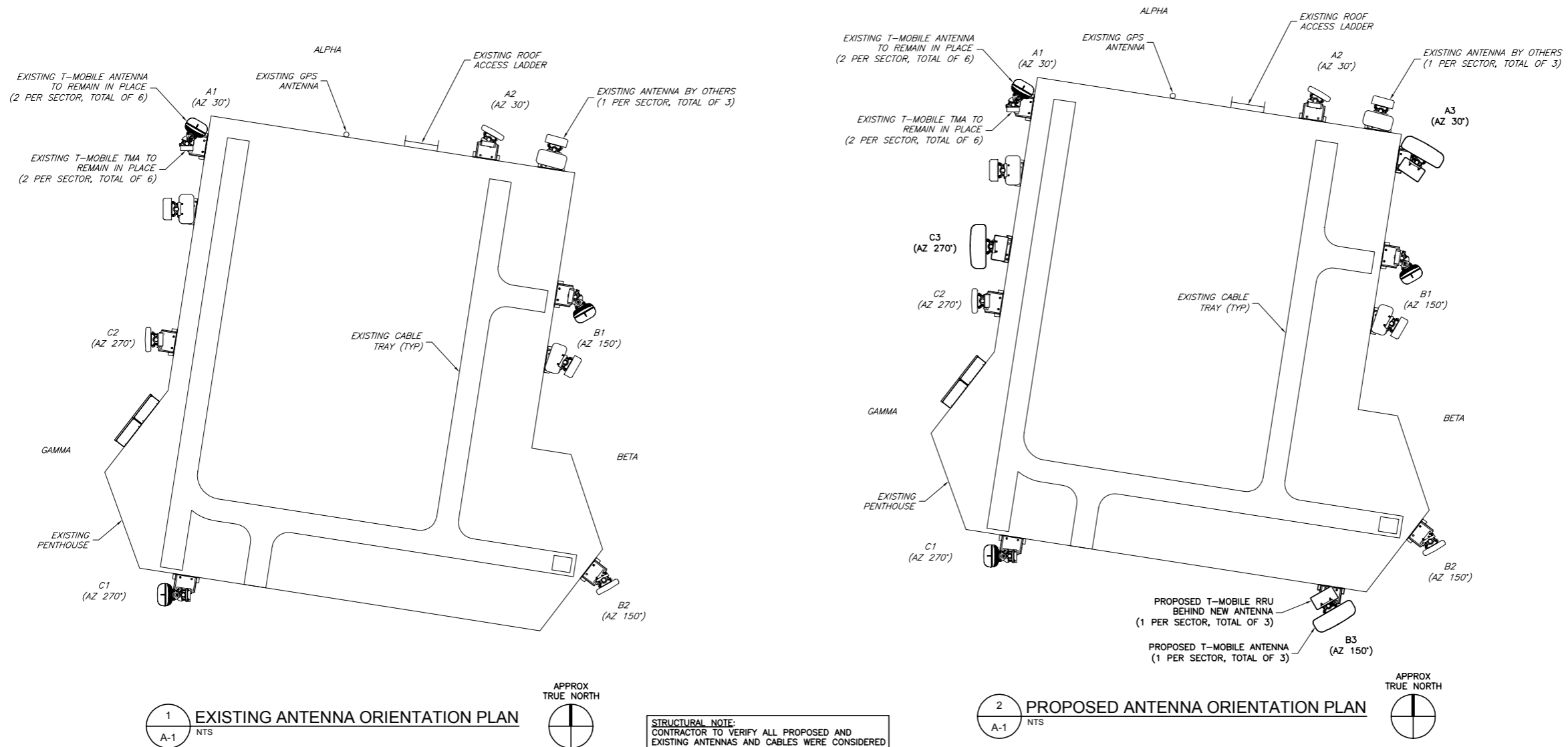


ANTENNA INFORMATION									
SECTOR	STATUS	ANTENNA MANUFACTURER	ANTENNA MODEL	ANTENNA DIMENSIONS (HxWxD)	RAD CENTER	AZIMUTH	TMA/RRU QUANTITY & MODEL	CABLE QUANTITY & TYPE	CABLE LENGTH
A1	EXISTING	ERICSSON	AIR21 B2P/B4A	55.9"x12.9"x7.9"	110'-0"	30°	(1) TWIN STYLE 1A-PCS TMA	(2) EXISTING COAX CABLES (1) EXISTING 6X12 HYBRID	49'±
A2	EXISTING	RFS	APX16DW-DWV-S-E-A20	55.9"x13.0"x3.15"	110'-0"	30°	(1) TWIN STYLE 1B-AWS TMA	(2) EXISTING COAX CABLES	49'±
A3	PROPOSED	RFS	APXVAA24-43-U-A20	96.0"x24.0"x8.5"	110'-0"	30°	(1) ERICSSON 4478 B71 RRU	SHARED 6x12 HYBRID CABLE	-
B1	EXISTING	ERICSSON	AIR21 B2P/B4A	55.9"x12.9"x7.9"	110'-0"	150°	(1) TWIN STYLE 1A-PCS TMA	(2) EXISTING COAX CABLES (1) EXISTING 6X12 HYBRID	49'±
B2	EXISTING	RFS	APX16DW-DWV-S-E-A20	55.9"x13.0"x3.15"	110'-0"	150°	(1) TWIN STYLE 1B-AWS TMA	(2) EXISTING COAX CABLES	49'±
B3	PROPOSED	RFS	APXVAA24-43-U-A20	96.0"x24.0"x8.5"	110'-0"	150°	(1) ERICSSON 4478 B71 RRU	SHARED 6x12 HYBRID CABLE	-
C1	EXISTING	ERICSSON	AIR21 B2P/B4A	55.9"x12.9"x7.9"	110'-0"	270°	(1) TWIN STYLE 1A-PCS TMA	(2) EXISTING COAX CABLES (1) EXISTING 6X12 HYBRID	49'±
C2	EXISTING	RFS	APX16DW-DWV-S-E-A20	55.9"x13.0"x3.15"	110'-0"	270°	(1) TWIN STYLE 1B-AWS TMA	(2) EXISTING COAX CABLES	49'±
C3	PROPOSED	RFS	APXVAA24-43-U-A20	96.0"x24.0"x8.5"	110'-0"	270°	(1) ERICSSON 4478 B71 RRU	SHARED 6x12 HYBRID CABLE	-

NOTES:
 1. CONTRACTOR TO VERIFY PROPOSED ANTENNA INFORMATION IS THE MOST CURRENT DATA AT TIME OF CONSTRUCTION.
 2. CONTRACTOR TO CONFIRM CABLE LENGTHS PRIOR TO CONSTRUCTION.



ENGINEER	 TOTALLY COMMITTED. NB+C ENGINEERING SERVICES, LLC. <small>100 APOLLO DRIVE, SUITE 303 CHELSEA, MA 01924 (978) 856-8308</small>												
APPLICANT	 T-MOBILE NORTHEAST LLC 15 COMMERCE WAY, SUITE B NORTON, MA 02766 OFFICE: (508) 286-2700 FAX: (508) 286-2893												
SITE INFORMATION	4DN2202A ME202 / DEERING PAVILION 880 FOREST AVENUE PORTLAND, ME 04101 CUMBERLAND COUNTY												
DESIGN RECORD	<table border="1"> <thead> <tr> <th colspan="4">REVISIONS</th> </tr> <tr> <th>REV</th> <th>DATE</th> <th>DESCRIPTION</th> <th>BY</th> </tr> </thead> <tbody> <tr> <td>0</td> <td>08/03/17</td> <td>FINAL CDs</td> <td>DRG</td> </tr> </tbody> </table>	REVISIONS				REV	DATE	DESCRIPTION	BY	0	08/03/17	FINAL CDs	DRG
REVISIONS													
REV	DATE	DESCRIPTION	BY										
0	08/03/17	FINAL CDs	DRG										
PROFESSIONAL STAMP													
ENGINEER	KRUPAKARAN KOLANDAIVELU, P.E. ME PROFESSIONAL ENGINEER LIC. #12979												
SHEET TITLE	ANTENNA PLANS & ANTENNA SCHEDULE												
SHEET NUMBER	A-1												