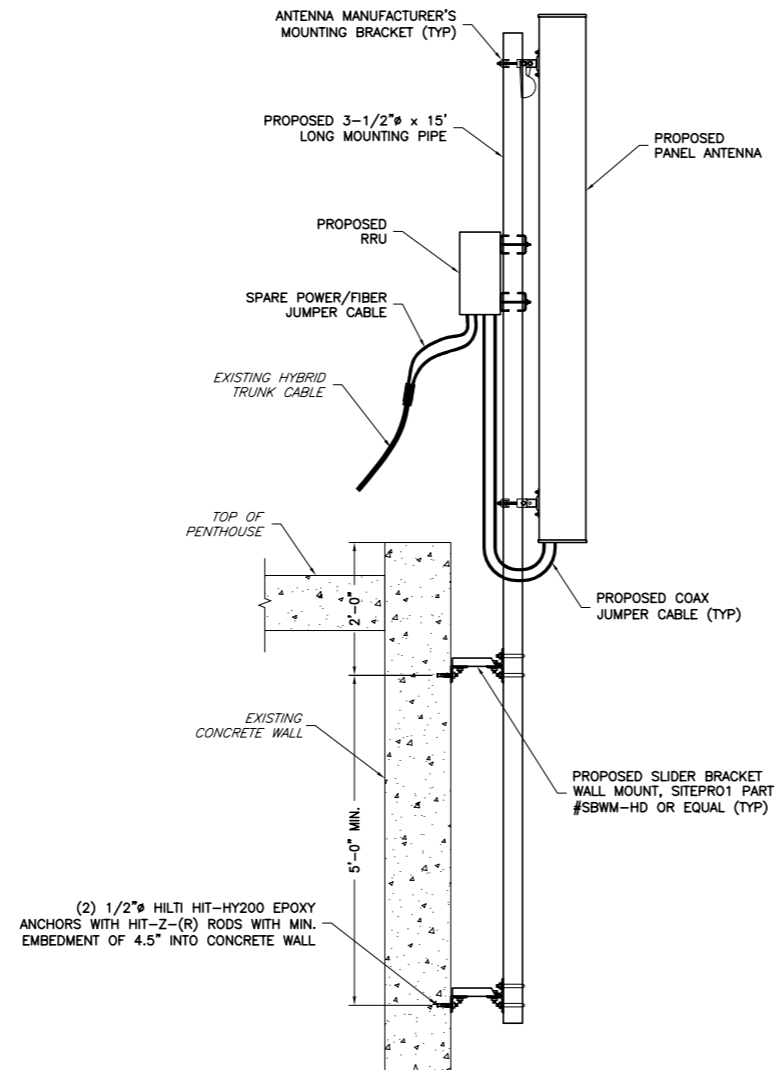


MECHANICAL SPECIFICATIONS
 RFS PART# - APXVAA24-43-U-A20
 HEIGHT: 96.0 IN
 WIDTH: 24.0 IN
 DEPTH: 8.5 IN
 WEIGHT: 101.4 LBS

1 RFS PANEL ANTENNA
 A-2 NTS



(2) 1/2" HILTI HIT-HY200 EPOXY ANCHORS WITH HIT-Z-(R) RODS WITH MIN. EMBEDMENT OF 4.5" INTO CONCRETE WALL

2 ANTENNA MOUNTING DETAIL
 A-2 NTS



SIZE AND WEIGHT TABLE

RRU	WIDTH	DEPTH	HEIGHT	WEIGHT W/O BRACKET
RADIO 4478 B71	13.2"	7.4"	15.0"	60.0 LBS.

NOTES:

- DO NOT PAINT THE RRU. RRU SOLAR SHIELD CAN BE PAINTED PER MANUFACTURER'S METHOD OF PROCEDURE.

3 ERICSSON REMOTE RADIO UNIT (RRU)
 A-2 NTS

ENGINEER



APPLICANT

T-Mobile
 T-MOBILE NORTHEAST LLC
 15 COMMERCE WAY, SUITE B
 NORTON, MA 02766
 OFFICE: (508) 286-2700
 FAX: (508) 286-2893

SITE INFORMATION

4DN2202A
 ME202 / DEERING PAVILION
 880 FOREST AVENUE
 PORTLAND, ME 04101
 CUMBERLAND COUNTY

DESIGN RECORD

REVISIONS			
REV	DATE	DESCRIPTION	BY
0	08/03/17	FINAL CDs	DRG

PROFESSIONAL STAMP



ENGINEER

KRUPAKARAN KOLANDAIVELU, P.E.
 ME PROFESSIONAL ENGINEER LIC. #12979

SHEET TITLE

ANTENNA MOUNTING DETAILS

SHEET NUMBER

A-2