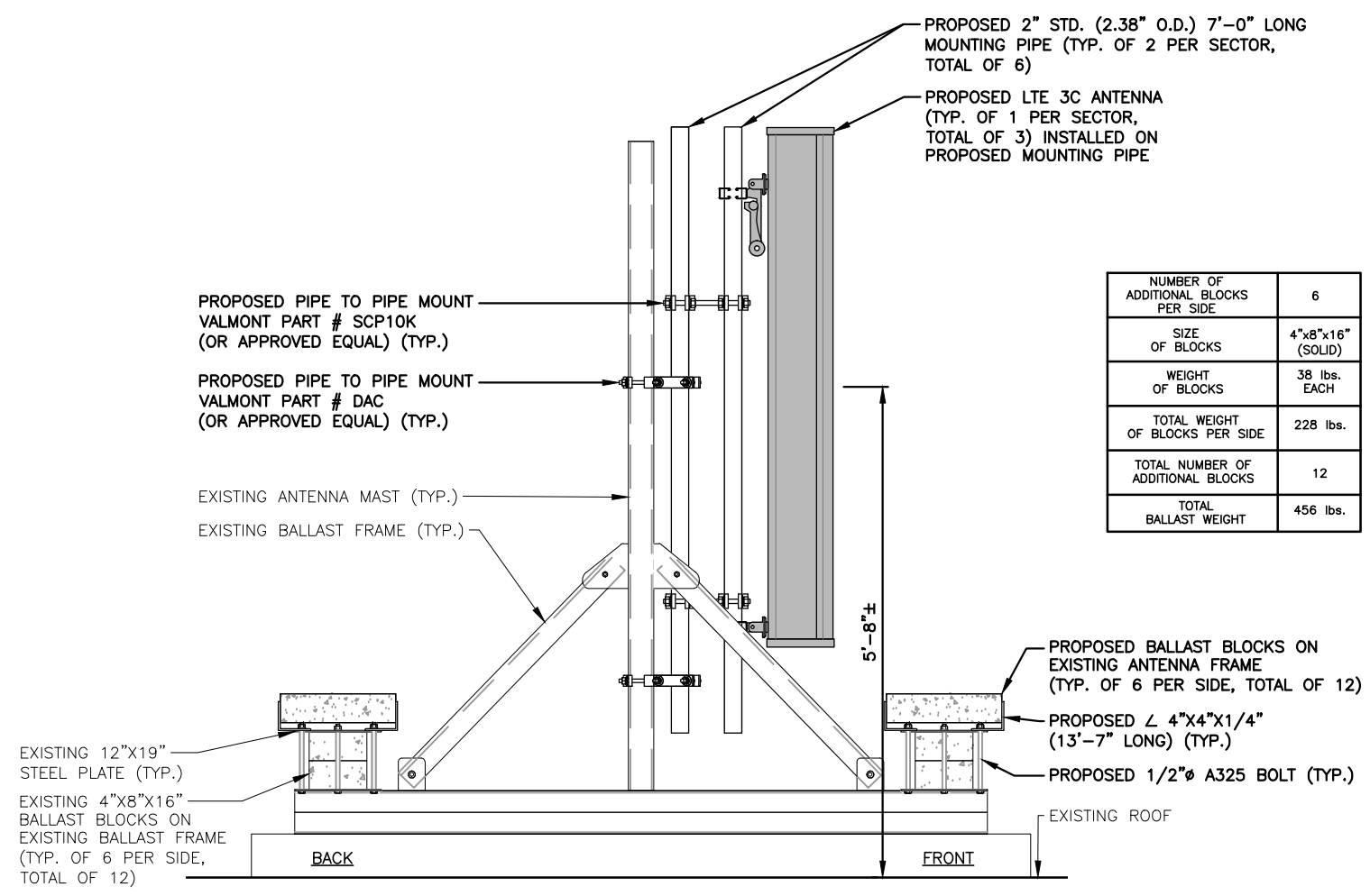


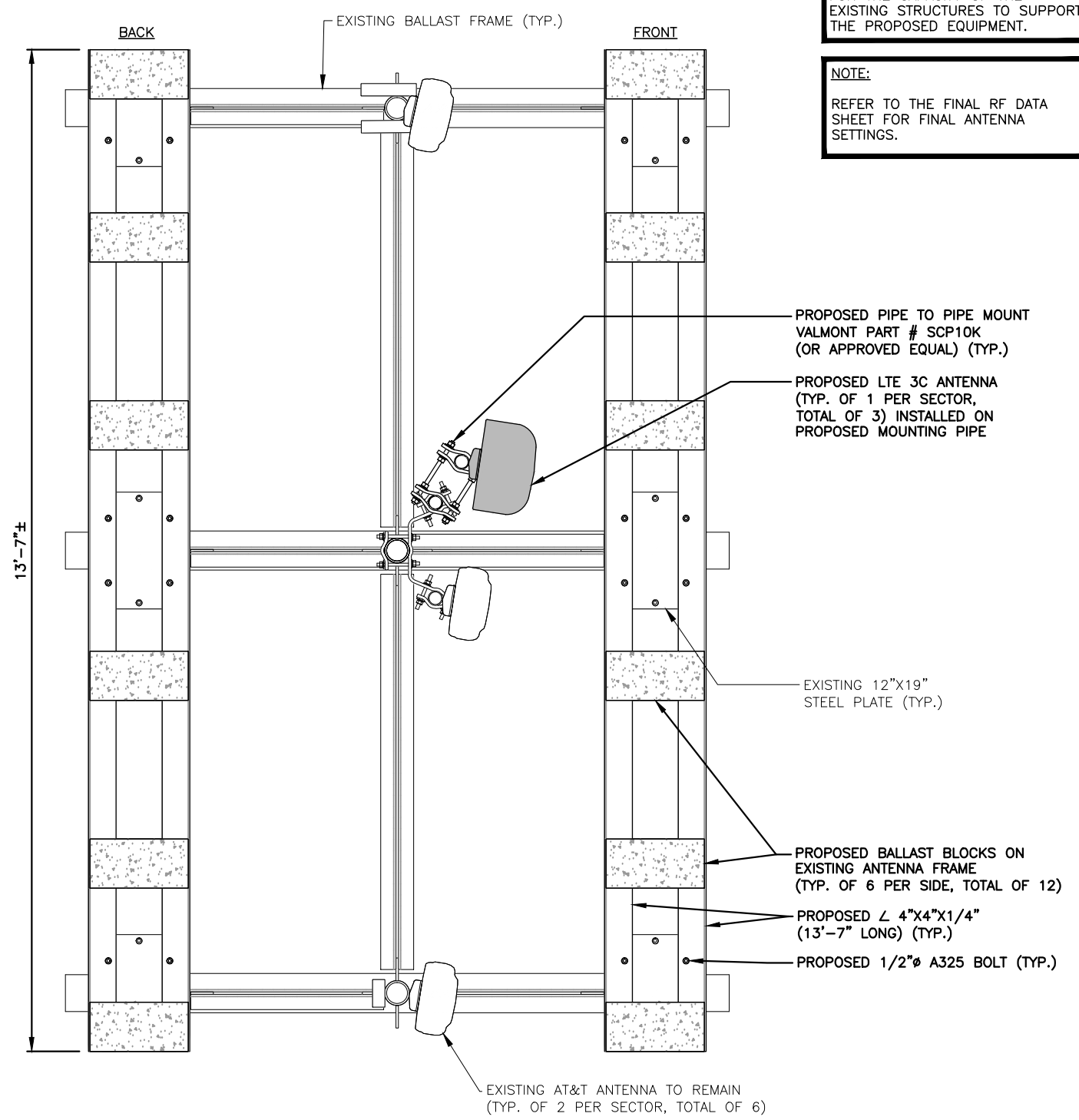
NOTE:
REFER TO STRUCTURAL ANALYSIS BY: HUDSON DESIGN GROUP, LLC, DATED: JANUARY 04, 2016, FOR THE CAPACITY OF THE EXISTING STRUCTURES TO SUPPORT THE PROPOSED EQUIPMENT.

NOTE:
REFER TO THE FINAL RF DATA SHEET FOR FINAL ANTENNA SETTINGS.

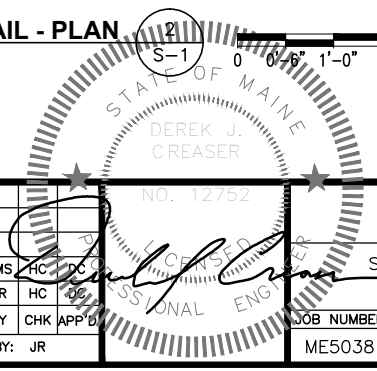


NUMBER OF ADDITIONAL BLOCKS PER SIDE	6
SIZE OF BLOCKS	4"x8"x16" (SOLID)
WEIGHT OF BLOCKS	38 lbs. EACH
TOTAL WEIGHT OF BLOCKS PER SIDE	228 lbs.
TOTAL NUMBER OF ADDITIONAL BLOCKS	12
TOTAL BALLAST WEIGHT	456 lbs.

PROPOSED BALLAST MODIFICATION DETAIL - ELEVATION 1
22x34 SCALE: 1"=1'-0"
11x17 SCALE: 1/2"=1'-0" S-1



PROPOSED BALLAST MODIFICATION DETAIL - PLAN 2
22x34 SCALE: 1"=1'-0"
11x17 SCALE: 1/2"=1'-0" S-1



Hudson Design Group, LLC
1600 OSGOOD STREET
BUILDING 20 NORTH, SUITE 309D
N. ANDOVER, MA 01845
TEL: (978) 557-5553
FAX: (978) 336-5586

EMPIRE telecom
16 ESQUIRE ROAD
BILLERICA, MA 01862
TEL: (978) 608-8400

SITE NUMBER: ME5038
SITE NAME: MORRILLS CORNER
880 FOREST AVENUE
PORTLAND, ME 04103
CUMBERLAND COUNTY

at&t
550 COCHITUATE ROAD
FRAMINGHAM, MA 01701

1 02/23/16 ISSUED FOR PERMITTING		KMS	HC	DC	STRUCTURAL MODIFICATION DETAILS (LTE 3C 2016)
0 12/21/15 ISSUED FOR REVIEW		JR	HC		
NO.	DATE	REVISIONS		BY	CHK APP'D
SCALE: AS SHOWN		DESIGNED BY: HC		DRAWN BY: JR	
				JOB NUMBER	DRAWING NUMBER
				ME5038	S-1
					1