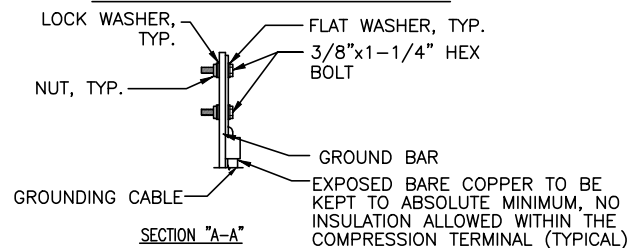
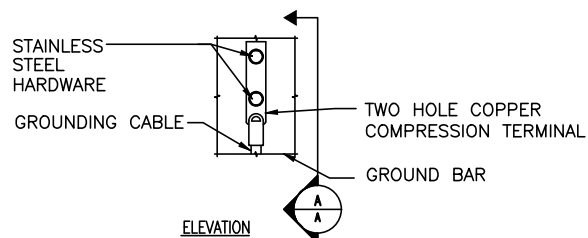


GROUND WIRE TO GROUND BAR CONNECTION DETAIL
SCALE: N.T.S.

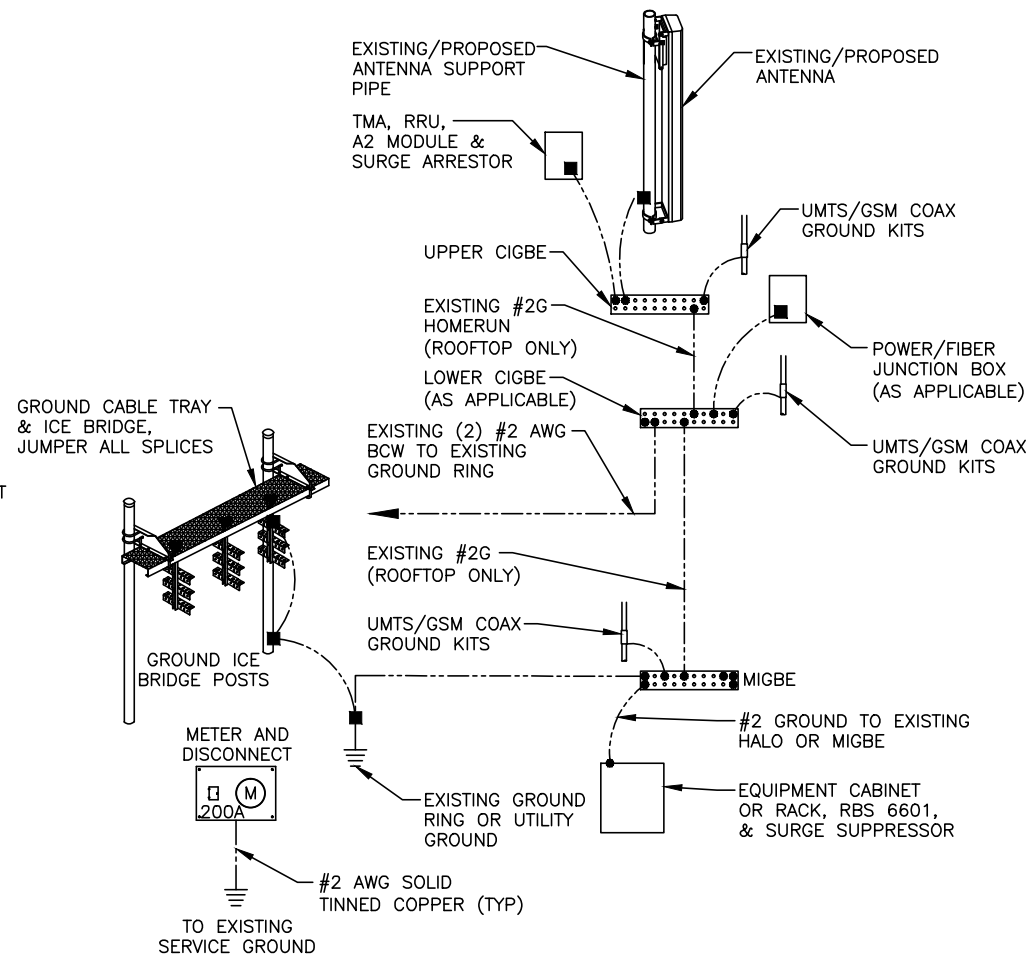
1
G-1



- NOTE:
- "DOUBLING UP" OR "STACKING" OF CONNECTION IS NOT PERMITTED.
 - OXIDE INHIBITING COMPOUND TO BE USED AT ALL LOCATIONS.
 - CADWELD DOWNLEADS FROM UPPER EGB, LOWER EGB, AND MGB.

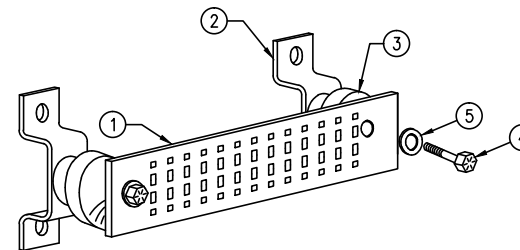
TYPICAL GROUND BAR CONNECTION DETAIL
SCALE: N.T.S.

3
G-1



GROUNDING RISER DIAGRAM
SCALE: N.T.S.

2
G-1



GROUND BAR - DETAIL
SCALE: N.T.S.

4
G-1

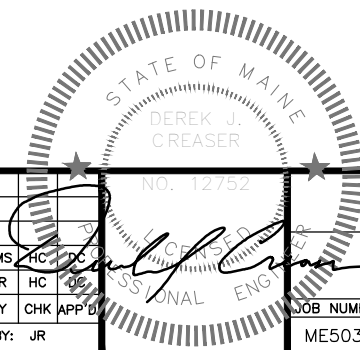
EACH GROUND CONDUCTOR TERMINATING ON ANY GROUND BAR SHALL HAVE AN IDENTIFICATION TAG ATTACHED AT EACH END THAT WILL IDENTIFY ITS ORIGIN AND DESTINATION.

SECTION "P" - SURGE PRODUCERS

- CABLE ENTRY PORTS (HATCH PLATES) (#2)
- GENERATOR FRAMEWORK (IF AVAILABLE) (#2)
- TELCO GROUND BAR
- COMMERCIAL POWER COMMON NEUTRAL/GROUND BOND (#2)
- +24V POWER SUPPLY RETURN BAR (#2)
- 48V POWER SUPPLY RETURN BAR (#2)
- RECTIFIER FRAMES.

SECTION "A" - SURGE ABSORBERS

- INTERIOR GROUND RING (#2)
- EXTERNAL EARTH GROUND FIELD (BURIED GROUND RING) (#2)
- METALLIC COLD WATER PIPE (IF AVAILABLE) (#2)
- BUILDING STEEL (IF AVAILABLE) (#2)



EMPIRE telecom
16 ESQUIRE ROAD
BILLERICA, MA 01862
TEL: (978) 608-8400

SITE NUMBER: ME5038
SITE NAME: MORRILLS CORNER
880 FOREST AVENUE
PORTLAND, ME 04103
CUMBERLAND COUNTY



1 02/23/16 ISSUED FOR PERMITTING		KMS HC DC	AT&T	
0 12/21/15 ISSUED FOR REVIEW		JR HC	GROUNDING DETAILS (LTE 3C 2016)	
NO.	DATE	REVISIONS	BY	CHK APP'D
SCALE: AS SHOWN		DESIGNED BY: HC	DRAWN BY: JR	
JOB NUMBER			DRAWING NUMBER	
ME5038			G-1	
			1	