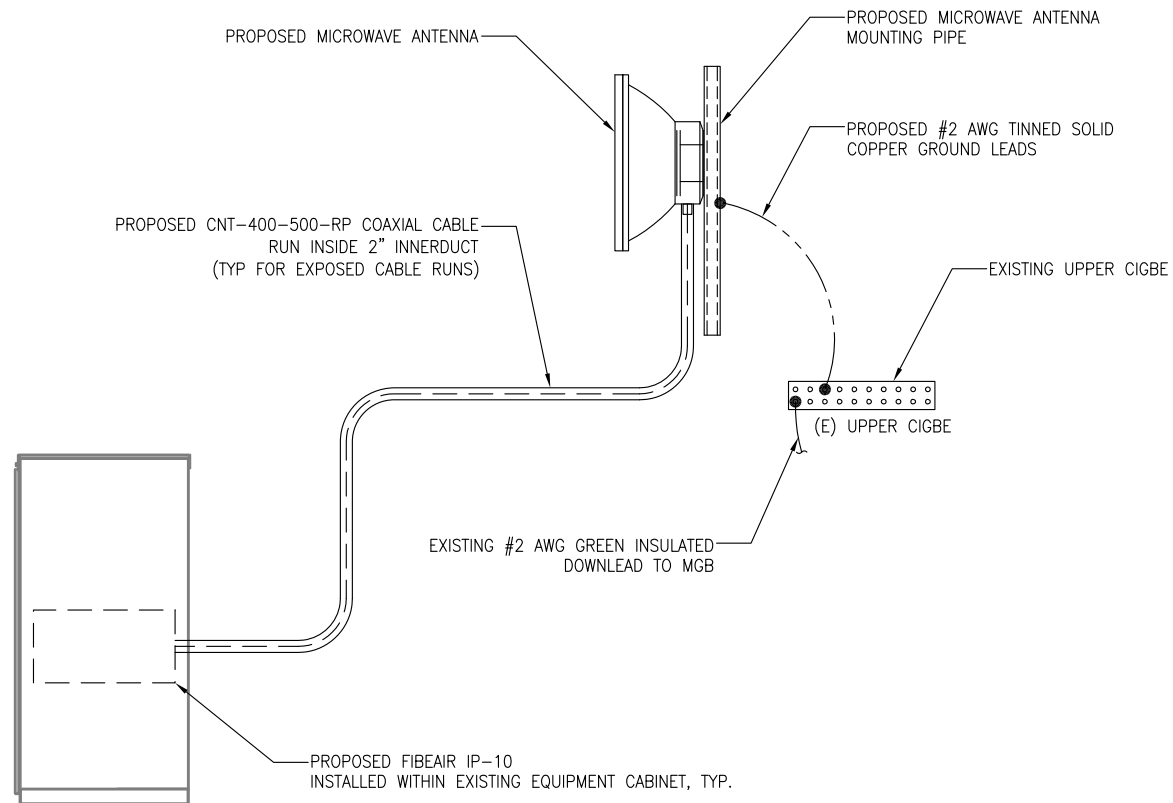
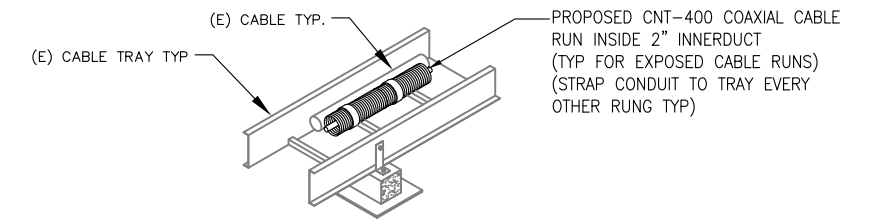


*GROUND BARS AT THE BOTTOM OF TOWERS/MONOPOLES SHALL ONLY USE EXOTHERMIC WELDS.

1 GROUND WIRE TO CIGBE DETAIL
G-1 SCALE: N.T.S.



2 DISH ANTENNA WIRING SCHEMATIC
G-1 SCALE: N.T.S.



3 HOR. INNERDUCT/COAX DETAIL
G-1 SCALE: N.T.S.



Marc R. Chretien