

PROPOSED LTE ANTENNAS MOUNTED TO EXISTING BALLAST FRAME (TYP. OF 3 PER SECTOR, TOTAL OF 9) (1 EXISTING UMTS/GSM ANTENNA & 1 EXISTING LTE ANTENNA TO BE REMOVED & REPLACED WITH NEW ANTENNAS) (PER SECTOR)

PROPOSED 2" STD. (2.38" O.D.) MOUNTING PIPE (8'-0" LONG PIPE) (TYP. OF 3 PER SECTOR, TOTAL OF 9)

EXISTING PIPE MAST

EXISTING PIPE TO PIPE CLAMP SET TO BE RELOCATED FROM MIDDLE PIPE MAST TO OUTER PIPE MAST

EXISTING BALLAST FRAME

SIDE (A)

SIDE (B)

EXISTING 6"x6" P.T. SLEEPER (TYP.)

**PROPOSED OUTER LTE ANTENNA MOUNTING DETAIL**

SCALE: N.T.S.

PROPOSED LTE ANTENNAS MOUNTED TO EXISTING BALLAST FRAME (TYP. OF 3 PER SECTOR, TOTAL OF 9) (1 EXISTING UMTS/GSM ANTENNA & 1 EXISTING LTE ANTENNA TO BE REMOVED & REPLACED WITH NEW ANTENNAS) (PER SECTOR)

PROPOSED 2" STD. (2.38" O.D.) MOUNTING PIPE (8'-0" LONG PIPE) (TYP. OF 3 PER SECTOR, TOTAL OF 9)

PROPOSED COMPACT TOWER MOUNT, VALMONT P/N CWT8 (OR APPROVED EQUAL) (TYP.)

EXISTING PIPE MAST

SIDE (A)

SIDE (B)

EXISTING 6"x6" P.T. SLEEPER (TYP.)

**PROPOSED INNER LTE ANTENNA MOUNTING DETAIL**

SCALE: N.T.S.

NOTE:

REFER TO STRUCTURAL ANALYSIS BY: HUDSON DESIGN GROUP, LLC, DATED: DECEMBER 20, 2013, FOR THE CAPACITY OF THE EXISTING STRUCTURES TO SUPPORT THE PROPOSED EQUIPMENT.

NOTE:

REFER TO THE FINAL RF DATA SHEET FOR FINAL ANTENNA SETTINGS.

NOTE: MOUNT PROPOSED EQUIPMENT PER MANUFACTURER'S SPECIFICATIONS

EXISTING RRH MOUNTED ON EXISTING UNISTRUT (TYP. OF 2 PER SECTOR, TOTAL OF 6) (TO REMAIN)

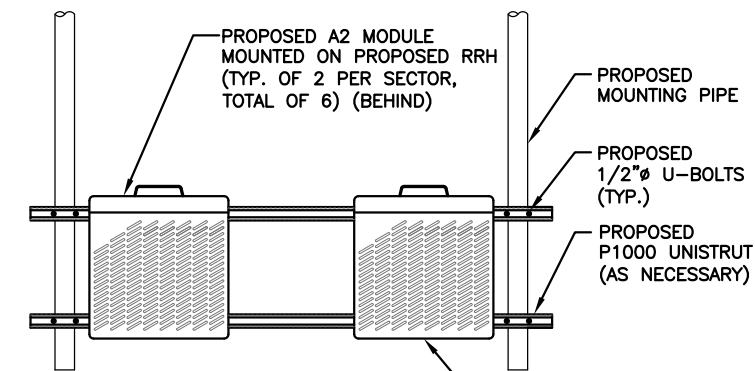
EXISTING RRH BALLAST FRAME (TYP. OF 1 PER SECTOR, TOTAL OF 3) (TO REMAIN)

PROPOSED SURGE SUPPRESSOR DC6-48-60-18-8F MOUNTED TO UNISTRUT

EXISTING ROOF LEVEL

**PROPOSED SURGE SUPPRESSOR MOUNTING DETAIL**

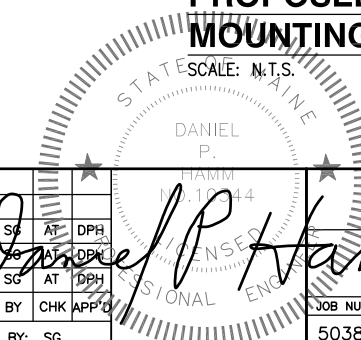
SCALE: N.T.S.



PROPOSED RRH MOUNTED ON UNISTRUT TO ANTENNA MOUNTING PIPE (TYP. OF 4 PER SECTOR, TOTAL OF 12)

**PROPOSED RRH MOUNTING DETAIL**

SCALE: N.T.S.



**Hudson Design Group LLC**  
 1600 OSGOOD STREET  
 BUILDING 20 NORTH, SUITE 3090  
 N. ANDOVER, MA 01845  
 TEL: (978) 557-5553  
 FAX: (978) 336-5586



27 NORTHWESTERN DR.  
 SALEM, NH 03079

**SITE NUMBER: ME5038**  
**SITE NAME: MORRILLS CORNER**  
 880 FOREST AVENUE  
 PORTLAND, ME 04101  
 CUMBERLAND COUNTY

**at&t**  
 550 COCHITUATE ROAD  
 FRAMINGHAM, MA 01701

NO.	DATE	REVISIONS	BY	CHK	APP'D
2	12/27/13	ISSUED FOR CONSTRUCTION	SG	AT	DPH
1	11/20/13	ISSUED FOR CONSTRUCTION	SG	AT	DPH
A	11/05/13	ISSUED FOR REVIEW	SG	AT	DPH

SCALE: AS SHOWN    DESIGNED BY: AT    DRAWN BY: SG

JOB NUMBER	DRAWING NUMBER	REV
5038.01	S-1	2

AT&T

RRH MOUNTING DETAILS (LTE)