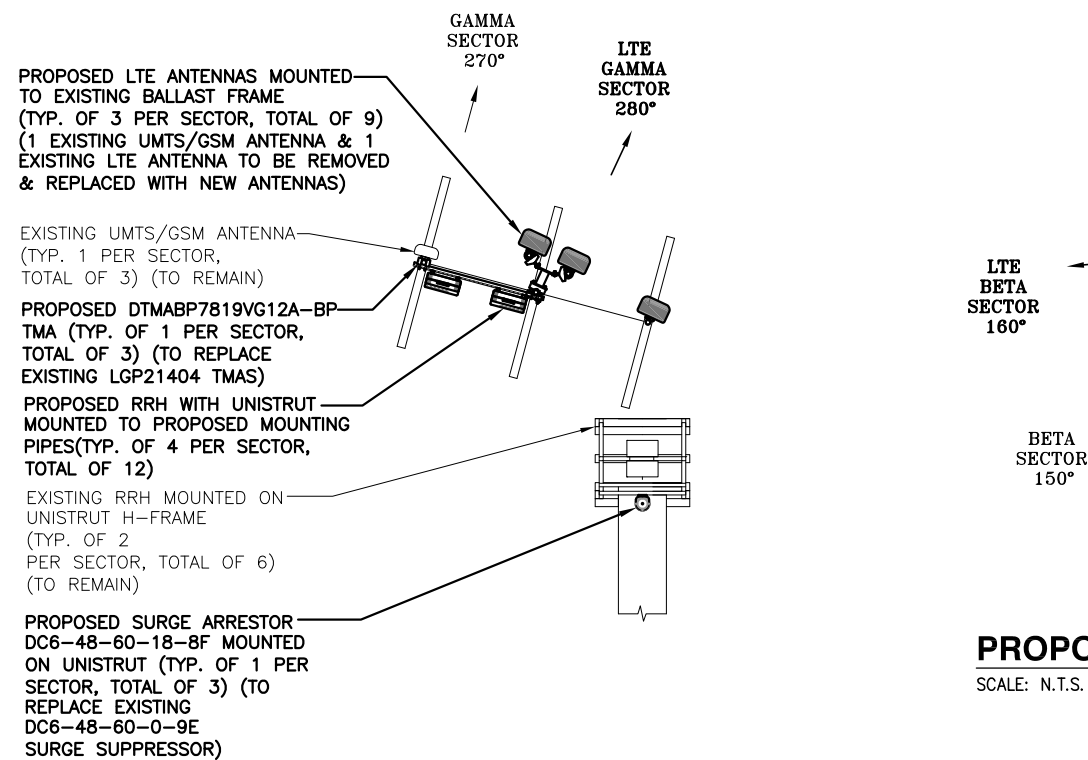
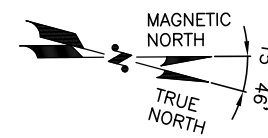


NOTE:
REFER TO STRUCTURAL ANALYSIS BY: HUDSON DESIGN GROUP, LLC, DATED: DECEMBER 20, 2013, FOR THE CAPACITY OF THE EXISTING STRUCTURES TO SUPPORT THE PROPOSED EQUIPMENT.

NOTE:
REFER TO THE FINAL RF DATA SHEET FOR FINAL ANTENNA SETTINGS.

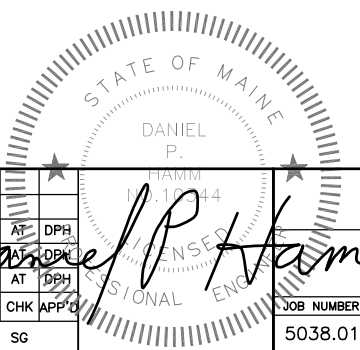
EXISTING LTE UMTS/GSM ANTENNA PLAN

SCALE: N.T.S.



PROPOSED LTE ANTENNA PLAN

SCALE: N.T.S.



Hudson Design Group LLC

1600 OSGOOD STREET
BUILDING 20 NORTH, SUITE 3090
N. ANDOVER, MA 01845

TEL: (978) 557-5553
FAX: (978) 336-5586

27 NORTHWESTERN DR.
SALEM, NH 03079

SITE NUMBER: ME5038
SITE NAME: MORRILLS CORNER

880 FOREST AVENUE
PORTLAND, ME 04101
CUMBERLAND COUNTY

550 COCHITUATE ROAD
FRAMINGHAM, MA 01701

NO.	DATE	REVISIONS	BY	CHK	APP'D
2	12/27/13	ISSUED FOR CONSTRUCTION	SG	AT	DPH
1	11/20/13	ISSUED FOR CONSTRUCTION	SG	AT	DPH
A	11/05/13	ISSUED FOR REVIEW	SG	AT	DPH

SCALE: AS SHOWN DESIGNED BY: AT DRAWN BY: SG

AT&T

ANTENNA PLAN (LTE)

JOB NUMBER: 5038.01 DRAWING NUMBER: A-3 REV: 2