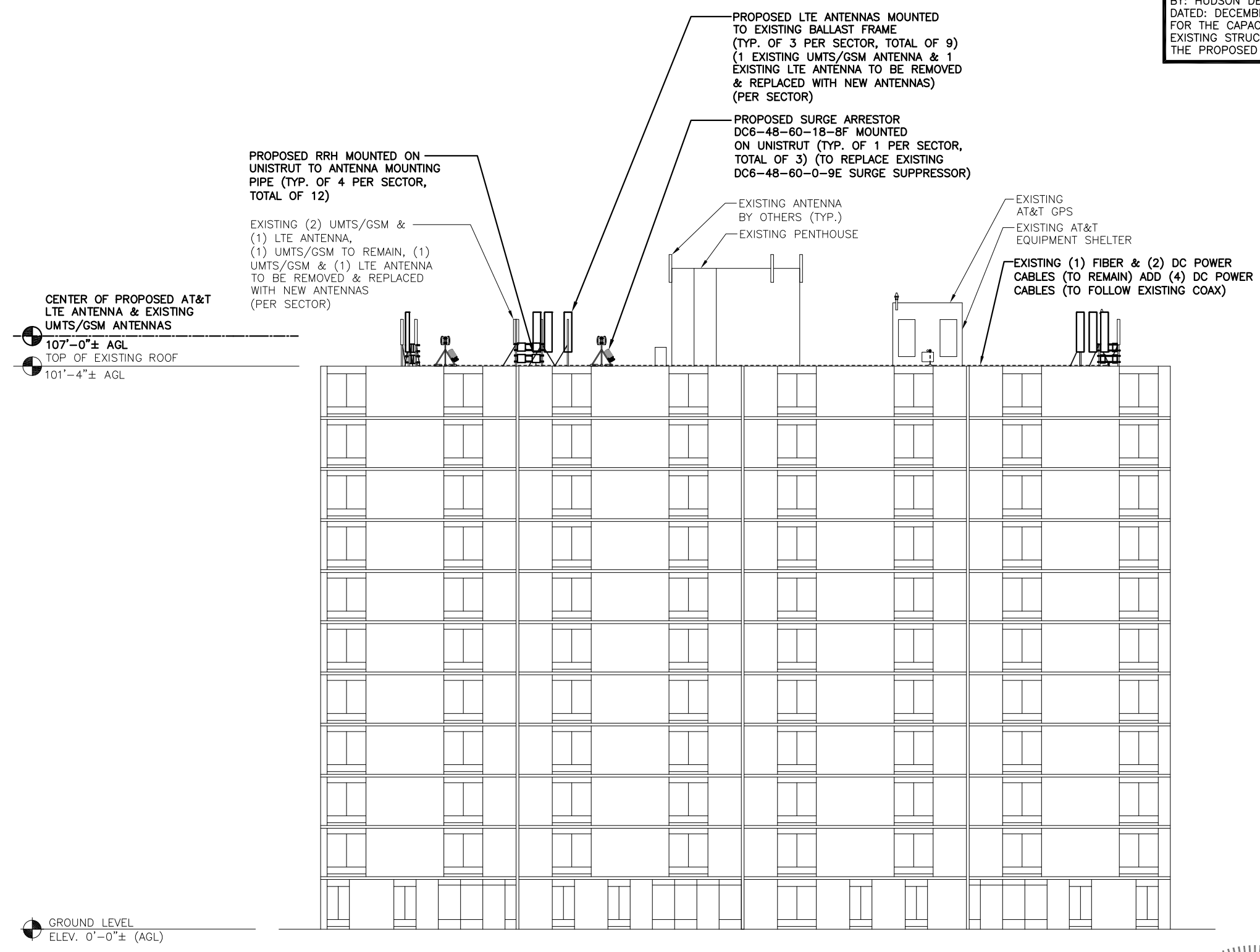


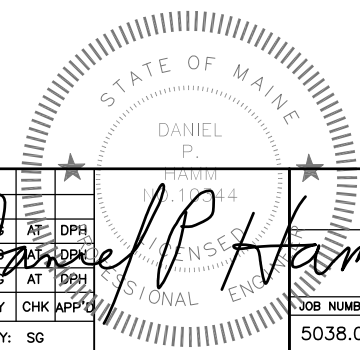
**NOTE:**  
 REFER TO STRUCTURAL ANALYSIS BY: HUDSON DESIGN GROUP, LLC, DATED: DECEMBER 20, 2013, FOR THE CAPACITY OF THE EXISTING STRUCTURES TO SUPPORT THE PROPOSED EQUIPMENT.

**NOTE:**  
 REFER TO THE FINAL RF DATA SHEET FOR FINAL ANTENNA SETTINGS.



**EAST ELEVATION**

SCALE: 3/32"=1'-0" 0 5'-4" 10'-8" 21'-4" 32'-0"



**Hudson Design Group LLC**  
 1600 OSGOOD STREET  
 BUILDING 20 NORTH, SUITE 3090  
 N. ANDOVER, MA 01845  
 TEL: (978) 557-5553  
 FAX: (978) 336-5586

27 NORTHWESTERN DR.  
 SALEM, NH 03079

**SITE NUMBER: ME5038**  
**SITE NAME: MORRILLS CORNER**  
 880 FOREST AVENUE  
 PORTLAND, ME 04101  
 CUMBERLAND COUNTY

**at&t**  
 550 COCHITUATE ROAD  
 FRAMINGHAM, MA 01701

NO.	DATE	REVISIONS	BY	CHK	APP'D
2	12/27/13	ISSUED FOR CONSTRUCTION	SG	AT	DPH
1	11/20/13	ISSUED FOR CONSTRUCTION	SG	AT	DPH
A	11/05/13	ISSUED FOR REVIEW	SG	AT	DPH

SCALE: AS SHOWN    DESIGNED BY: AT    DRAWN BY: SG

AT&T  
 ELEVATION (LTE)  
 Daniel P. Hamm  
 PROFESSIONAL ENGINEER  
 STATE OF MAINE  
 LICENSE NO. 10044

JOB NUMBER	DRAWING NUMBER	REV
5038.01	A-2	2