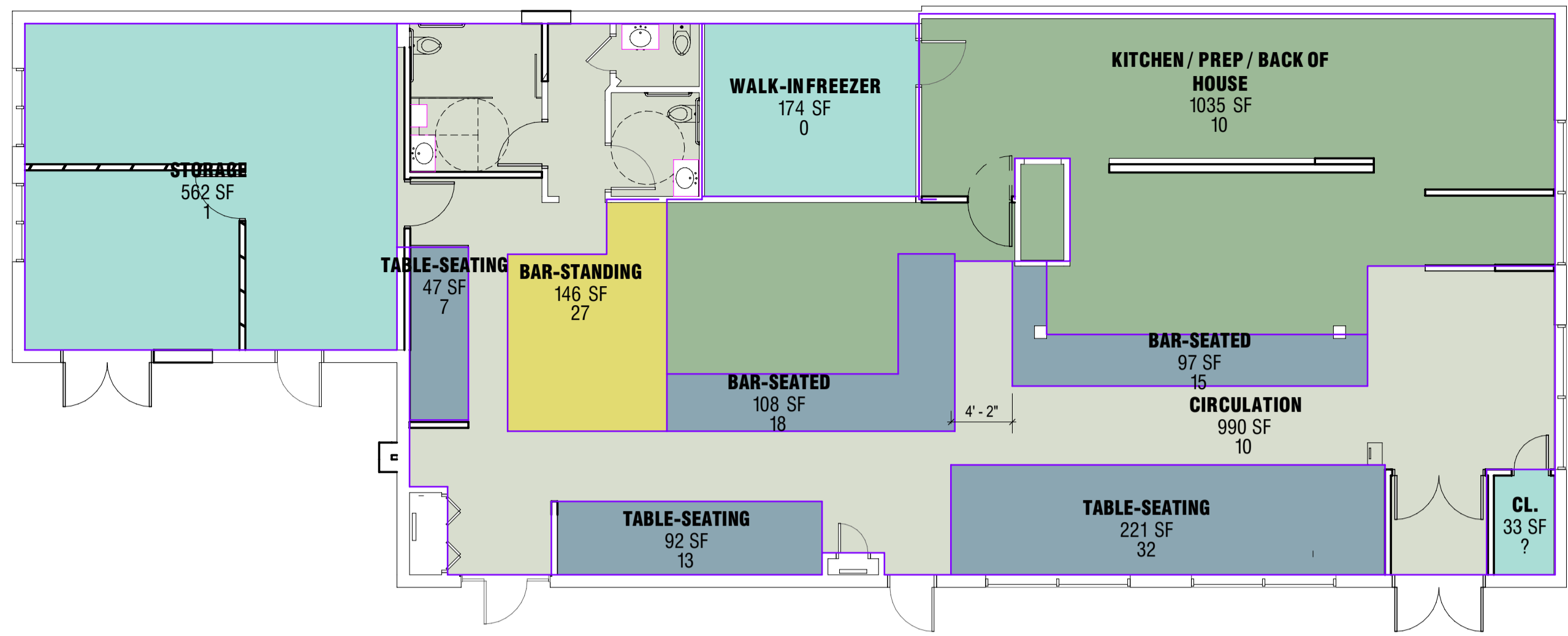


- ASSEMBLY-CONCENTRATED-CHAIRS ONLY
- ASSEMBLY-STANDING ROOM ONLY
- BUSINESS USE
- KITCHENS
- STORAGE-GENERAL

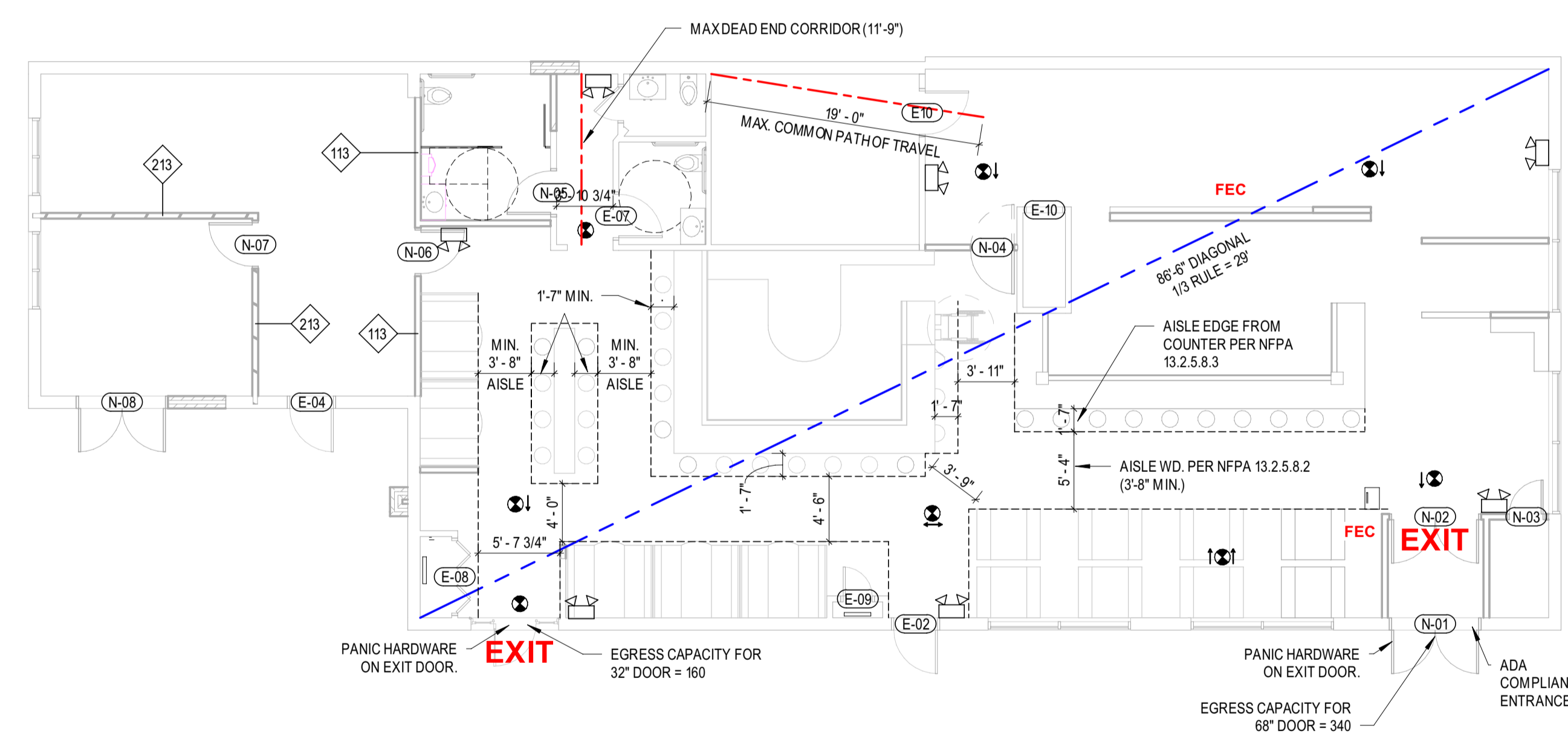


OCCUPANCY & USE SCHEDULE						
AREA	Occupancy	Space Use Type	Load Factor	(N)et / (G)ross	Area	#Occupants
1ST FLOOR PLAN						
TABLE-SEATING		ASSEMBLY-CONCENTRATED-CHAIRS ONLY	7	N	221 SF	32
TABLE-SEATING		ASSEMBLY-CONCENTRATED-CHAIRS ONLY	7	N	47 SF	7
BAR-SEATED		ASSEMBLY-CONCENTRATED-CHAIRS ONLY	7	N	108 SF	18
BAR-SEATED		ASSEMBLY-CONCENTRATED-CHAIRS ONLY	7	N	97 SF	15
TABLE-SEATING		ASSEMBLY-CONCENTRATED-CHAIRS ONLY	7	N	92 SF	13
					564 SF	85
BAR-STANDING		ASSEMBLY-STANDING ROOM ONLY	5	N	146 SF	27
					146 SF	27
CIRCULATION		BUSINESS USE	100	G	990 SF	10
					990 SF	10
KITCHEN / PREP / BACK OF HOUSE		KITCHENS	100	G	1,035 SF	10
					1,035 SF	10
WALK-IN FREEZER		STORAGE-GENERAL	500	G	174 SF	0
STORAGE		STORAGE-GENERAL	500	G	562 SF	1
CL.		STORAGE-GENERAL	500	G	33 SF	?
					769 SF	1
					3,504 SF	133
					3,504 SF	133

2 OCCUPANCY PLAN
1/8" = 1'-0"

OCCUPANT LOAD BY USE (NFPA 101 TABLE 7.3.1.2)		
Space Use	Occ_Load Factor	(N)et / (G)ross

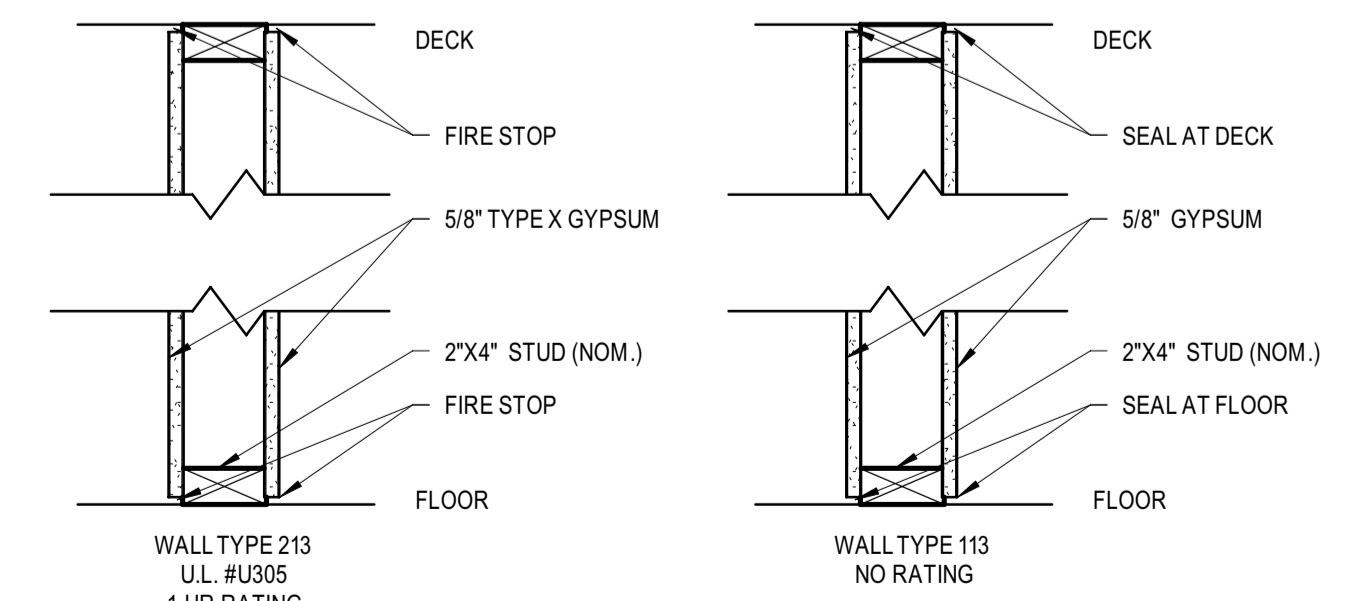
ASSEMBLY-STANDING ROOM ONLY	5	N
ASSEMBLY-CONCENTRATED-CHAIRS ONLY	7	N
ASSEMBLY-UNCONCENTRATED-TABLES & CHAIRS	15	N
BUSINESS USE	100	G
RESIDENTIAL USE	200	G
STORAGE-GENERAL	500	G
STORAGE-MERCANTILE	300	G
KITCHENS	100	G
MERCANTILE-SALES AREA ON OR BELOW STREET FLOOR	30	G
MERCANTILE-SALES AREA ABOVE STREET FLOOR	60	G
HEALTH CARE-INPATIENT TREATMENT	240	G
HEALTHCARE-SLEEPING DEPARTMENTS	120	G
HEALTHCARE-AMBULATORY	100	G
LIBRARY STACKS	100	G
LIBRARY READING	50	N
EXERCISE ROOMS (WITH EQUIPMENT)	50	G
SWIMMING POOLS (WATER SURFACE)	50	N
SWIMMING POOLS (DECK)	30	G
EXERCISE ROOMS (WITHOUT EQUIPMENT)	15	G
EDUCATIONAL CLASSROOMS	20	N
EDUCATIONAL - SHOPS & LABS	50	N
STAGES	15	N
DAY CARE	35	N



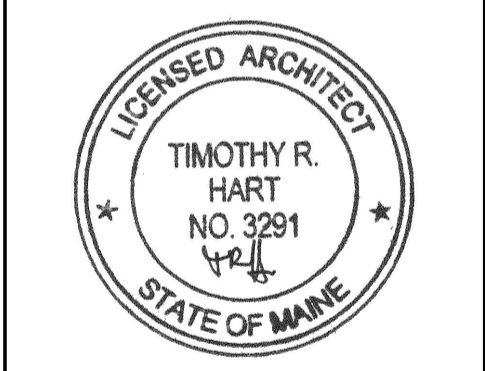
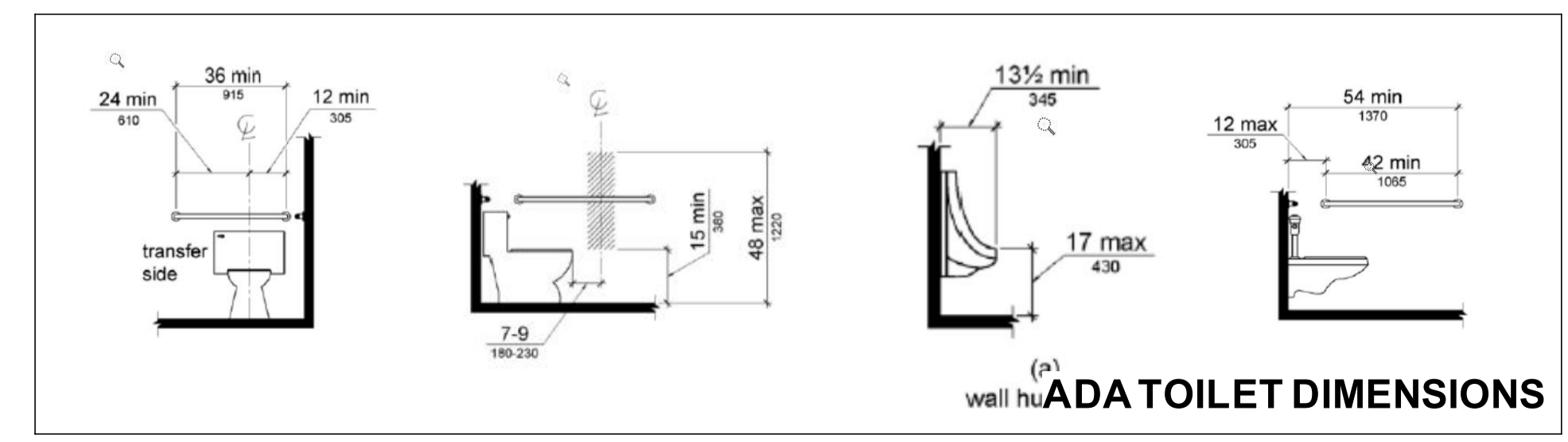
- LIFE SAFETY KEY**
- EXIT** Exit Discharge
 - E** Exit Access
 - FEC** Fire Extinguisher Cabinets
 - Smoke Partition
 - One Hour Rated Fire Partition
 - Two Hour Rated Fire Barrier
 - Dead End Corridors and Common Path of Travel
 - Maximum Diagonal Distance
 - Exit Sign
 - Emergency Light
 - Fire Alarm Horn/Strobe
 - Fire Alarm Pull Station
 - Smoke Detector

1 LIFE SAFETY AND CODE PLAN
1/8" = 1'-0"

DOOR & FRAME SCHEDULE						
NO.	DOOR		FRAME		RATING	COMMENTS
	SIZE	MTL	TYPE	MTL.		
E-10	3'-0"	7'-0"	F		N/A	EXISTING INSULATED DOOR
E-01	3'-0"	7'-0"	F		N/A	EXISTING EXTERIOR DOOR (DEMO AND REPLACE)
E-02	3'-0"	7'-0"	F		N/A	EXISTING DOOR
E-03	6'-0 3/4"	6'-10"	N/A		N/A	EXISTING DOOR
E-04	3'-0"	7'-0"	F		N/A	EXISTING DOOR
E-05	3'-0"	7'-0"	F		N/A	EXISTING EXTERIOR DOOR (TO BE FILLED IN)
E-06	2'-4"	7'-0"	F		N/A	EXISTING DOOR
E-07	3'-0"	7'-0"	F		N/A	EXISTING DOOR
E-08	5'-0"	6'-8"	P		N/A	EXISTING CLOSET DOOR
E-09	2'-0"	7'-0"	F		N/A	EXISTING DOOR
E-10	0"	0"			N/A	EXISTING CASING OPENING TO OFFICE STAIRS
N-01	6'-0"	7'-0"	GL	F	AL	NEW GLASS ENTRANCE
N-02	6'-0"	7'-0"	GL	F	AL	NEW GLASS ENTRANCE
N-03	2'-4"	7'-0"	WD	F	WD	NEW WOOD DOOR
N-04	3'-0"	7'-0"	WD	F	WD	NEW DOUBLE ACTION KITCHEN DOOR
N-05	3'-0"	7'-0"	WD	F	N/A	NEW WOOD DOOR
N-06	3'-0"	7'-0"	WD	F	WD	NEW WOOD DOOR
N-07	3'-0"	7'-0"	WD	F	45-MINUTE	NEW WOOD RATED DOOR
N-08	6'-0"	7'-0"	HM	F	N/A	NEW EXTERIOR GRADE HOLLOW METAL DOOR WITH MAXU-0.70



3 Partition Types
1 1/2" = 1'-0"



THIS DRAWING IS THE PROPERTY OF CANAL 5 STUDIO AND IS NOT TO BE COPIED OR REPRODUCED IN PART OR WHOLE 2014 © CANAL 5 STUDIO

Mark Date Description

Project Status

ISSUED FOR PERMIT

01-05-2018

Drawing Title

LIFE SAFETY & MISC.

Scale: As indicated

Drawing Number

A01.1