

Project Name:

502 Deering Center
Portland, Maine

Owner / Applicant:
502 Deering Center, LLC
55 Hamblet Avenue
Portland, Maine 04103

Consultants:
Architect
Lachman Architects & Planners
58 Fore Street, Bldg 30
Portland, Maine 04101
207.831.8585
Contact: Denis Lachman

Landscape Architects
Carroll Associates
217 Commercial St.
Portland, Maine 04101
207.772.1552
Contact: Patrick Carroll

Civil Engineer
Pinkham & Greer Civil Engineers
28 Vannah Ave.
Portland, ME 04103
207.781.5242
Contact: Thomas Greer

Surveyor
Four Points Associates
9 Ralph Avenue
Lewiston, Maine 04240
207.577.5840
Contact: Donald Dostie

Drawing Set:

No.	Date	Revision

Drawing Set:

PERMITTING

Drawn:

JDC

Checked:

TSG

Approved:

Thomas Greer

Drawing Title: 12/21/16

CIVIL DETAILS

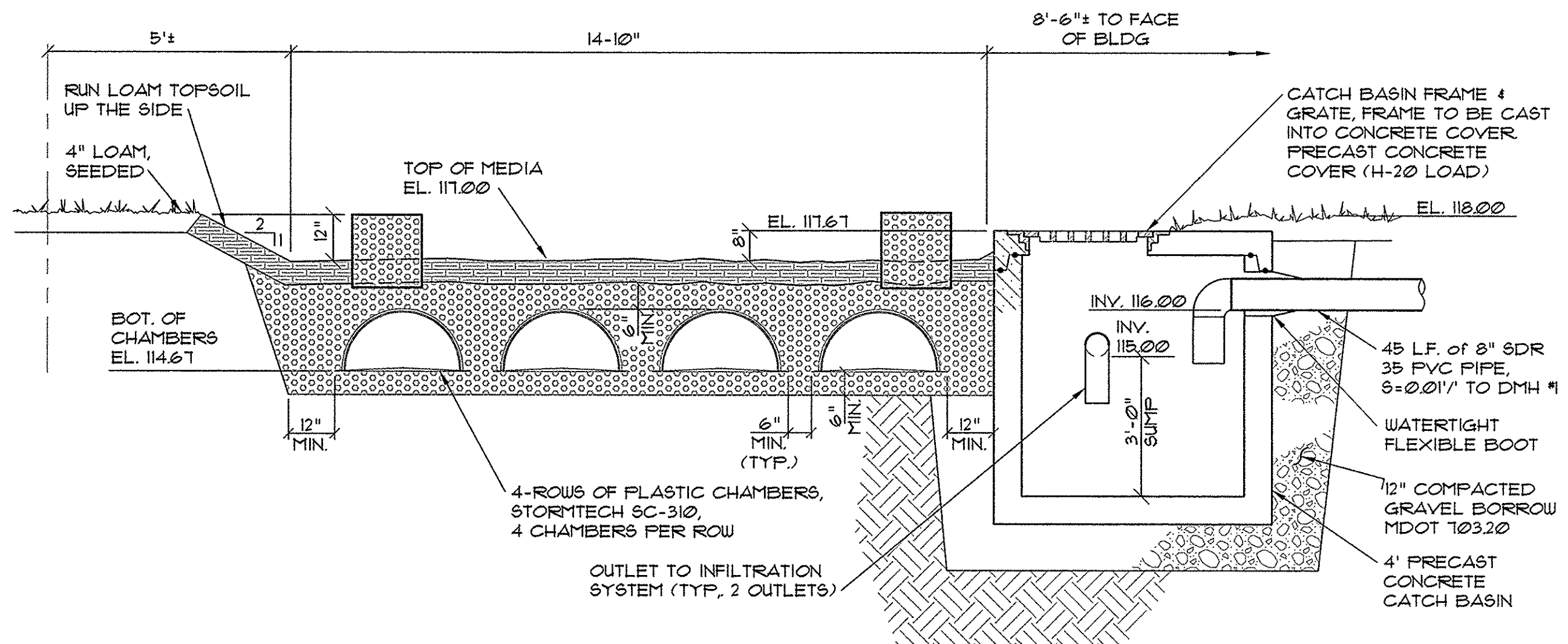
Job Number: PG: 16199

File:

Date: 12-22-2016 Scale: AS SHOWN

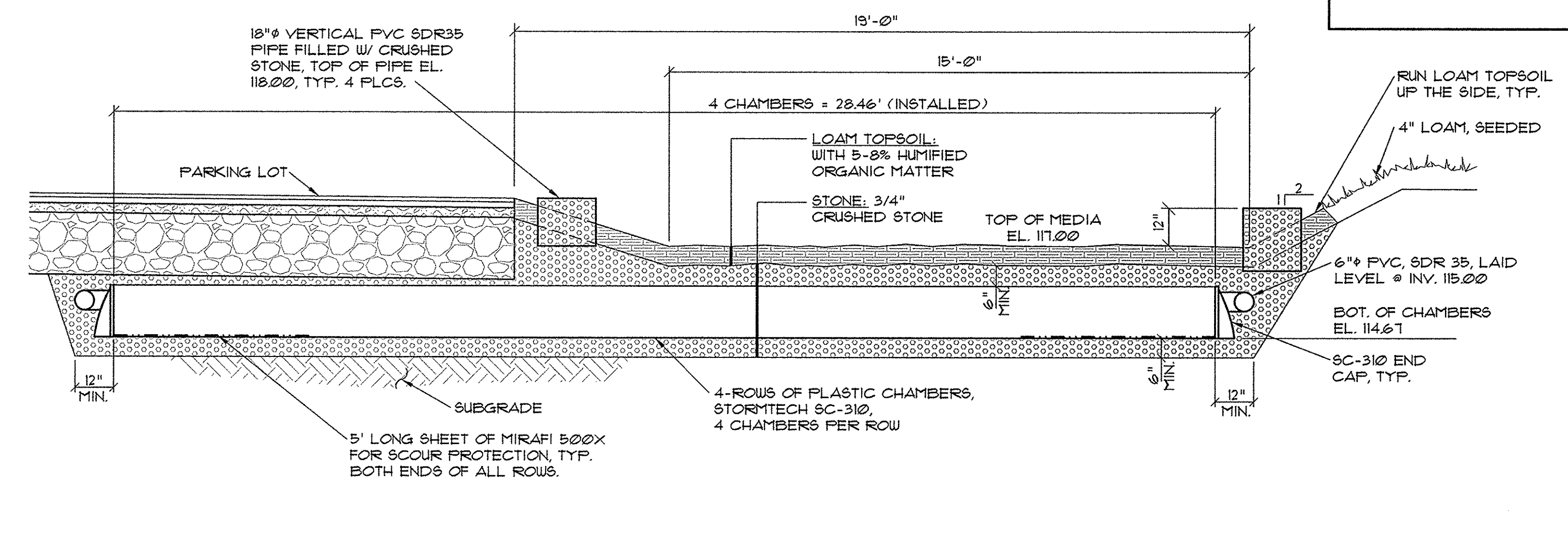
Drawing Number:

C 6.0



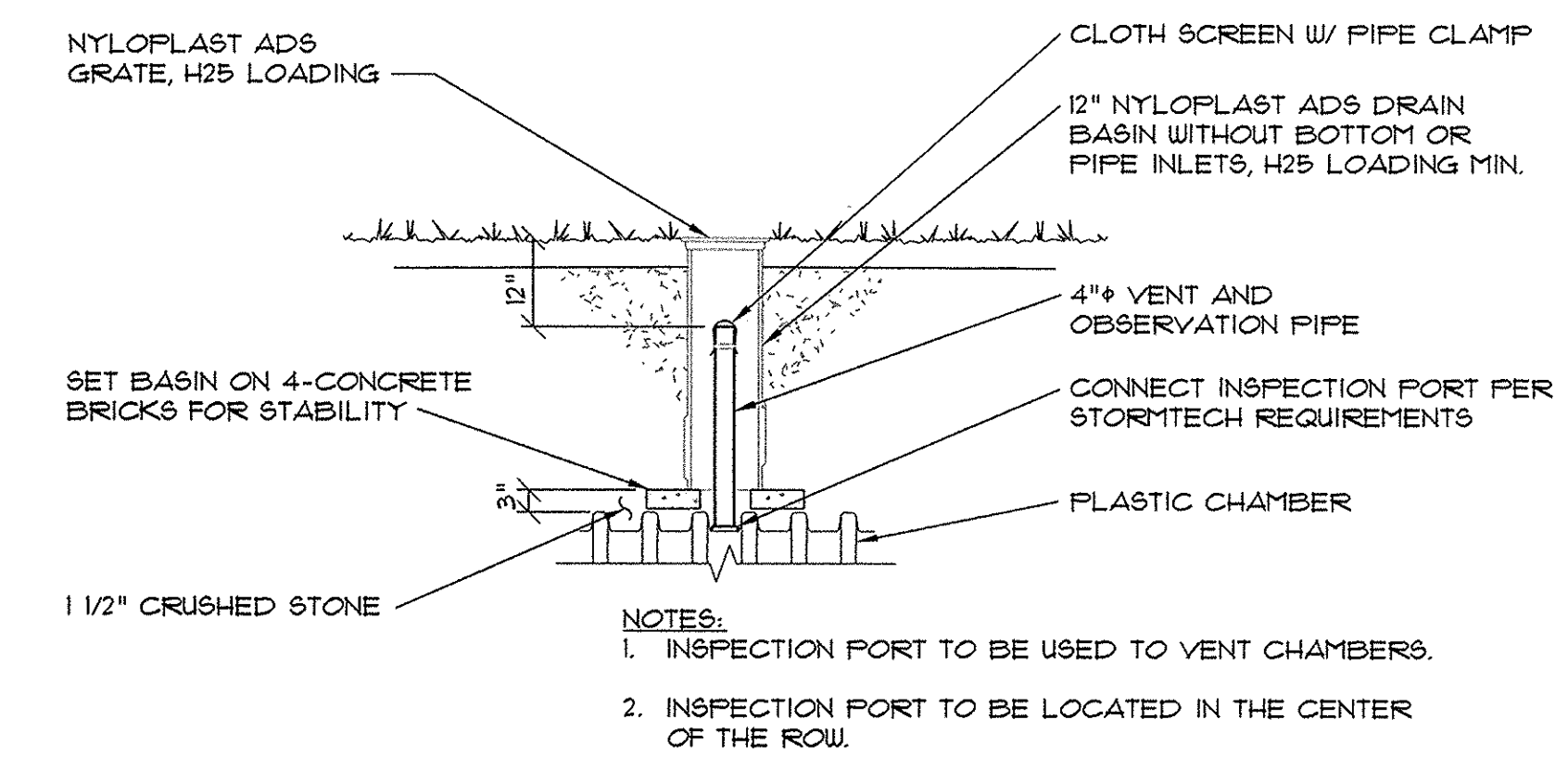
2 INFILTRATION SYSTEM #1 SECTION B-B

NOT TO SCALE



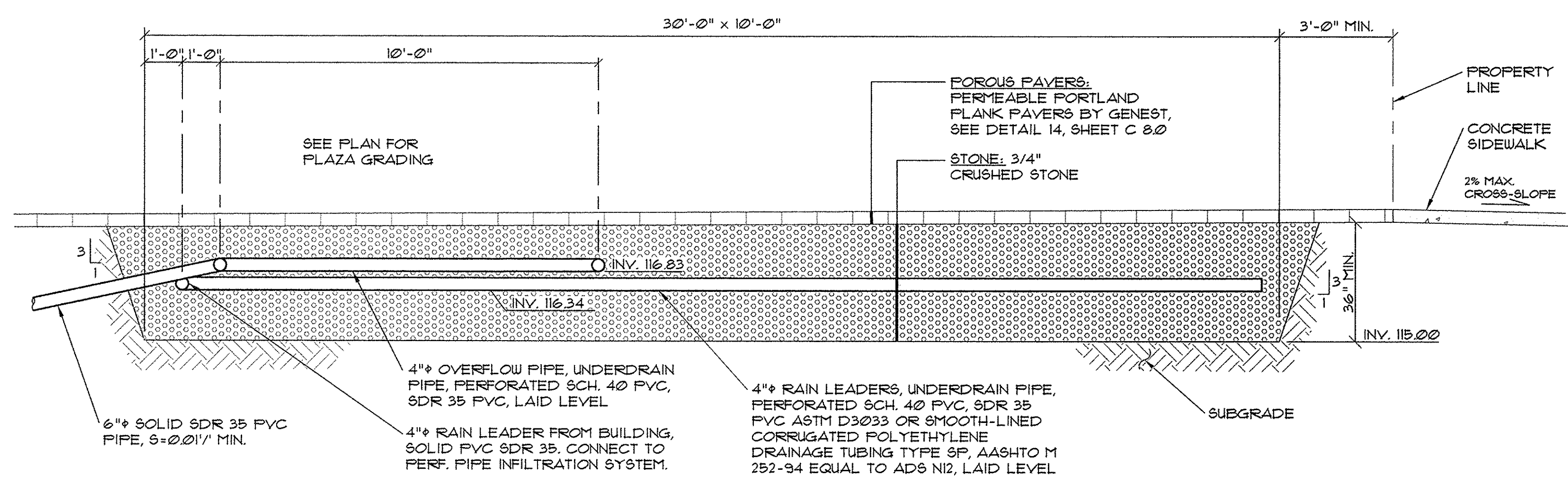
1 INFILTRATION SYSTEM #1 SECTION A-A

NOT TO SCALE



4 CHAMBER VENT & INSPECTION PORT SECTION

NOT TO SCALE



3 INFILTRATION SYSTEM #2 SECTION C-C

NOT TO SCALE