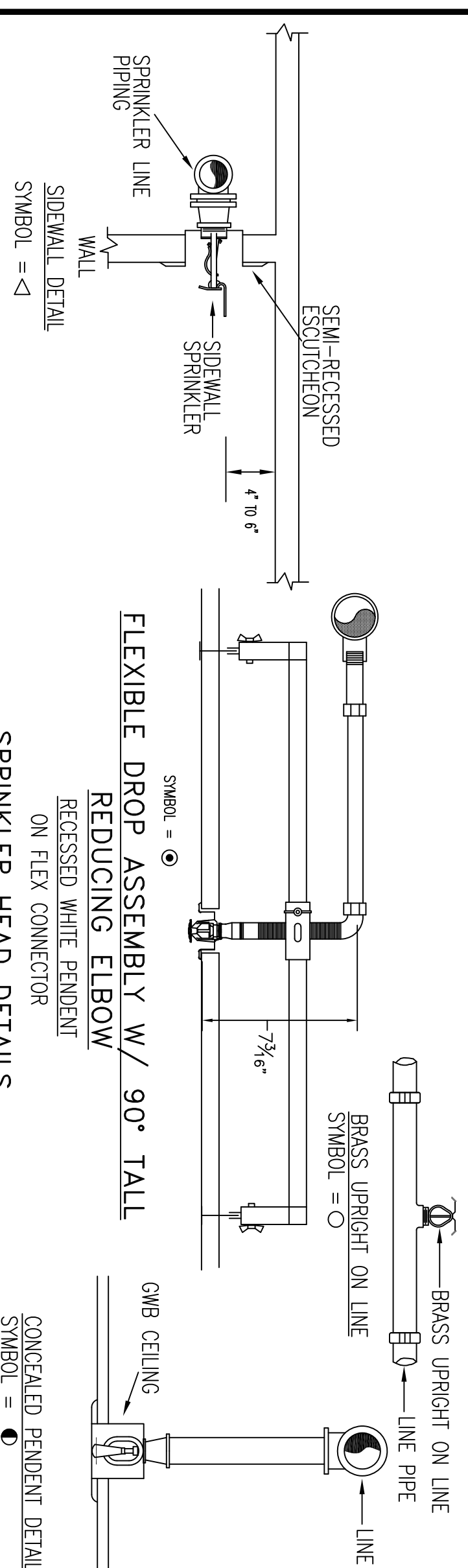


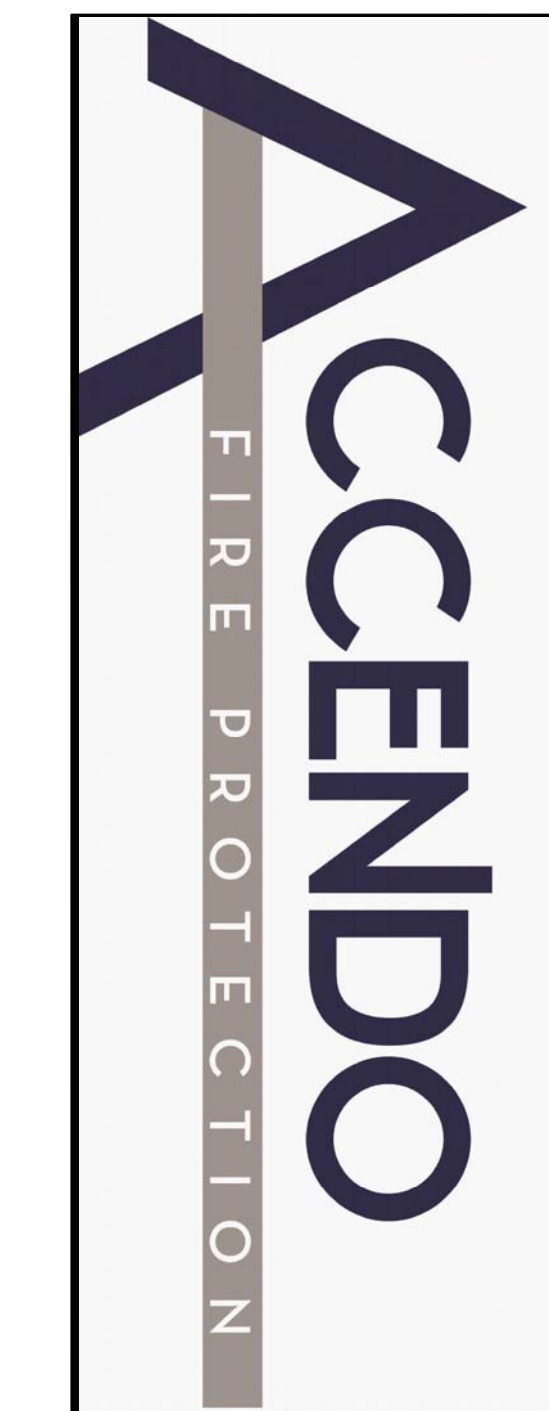
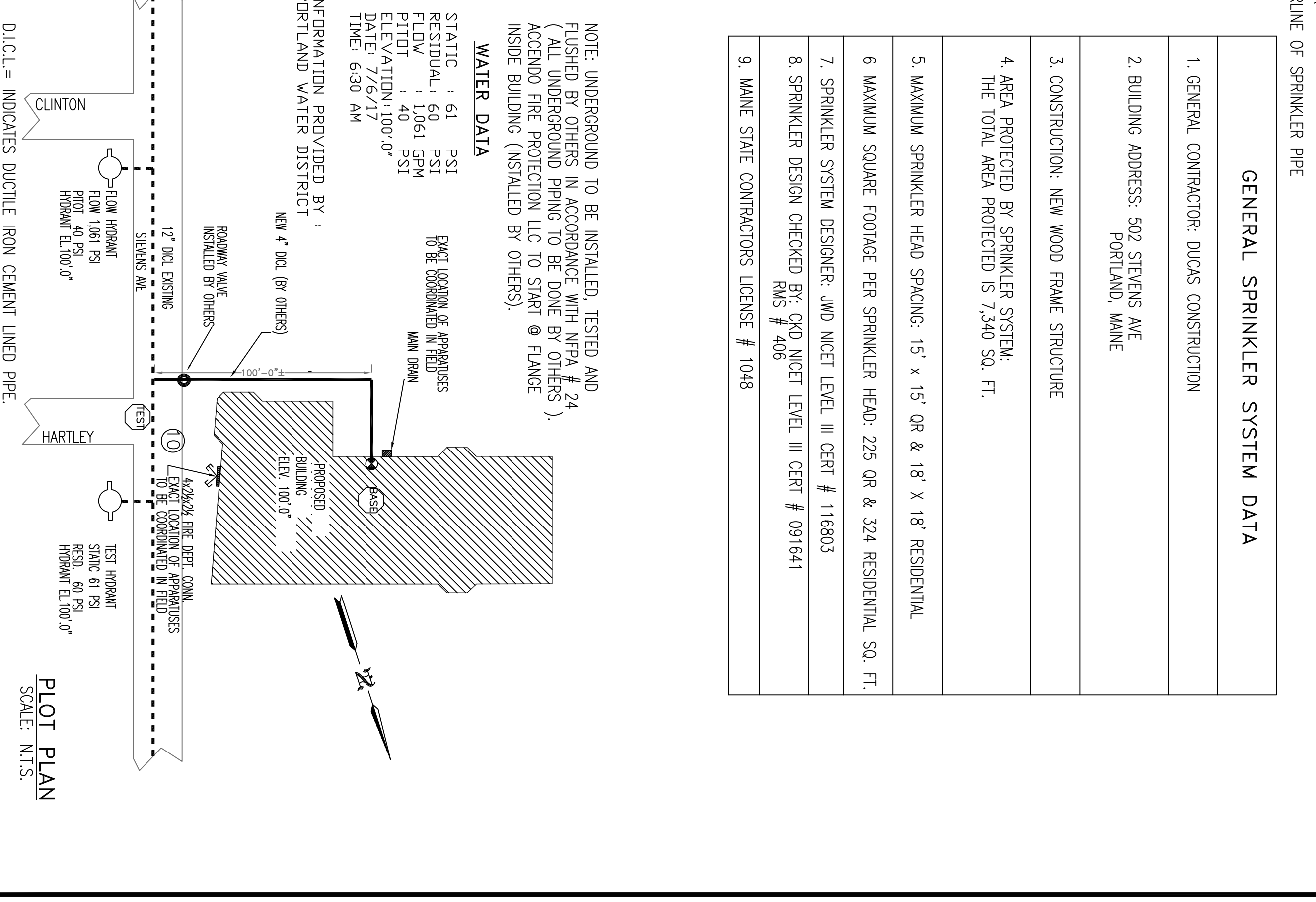
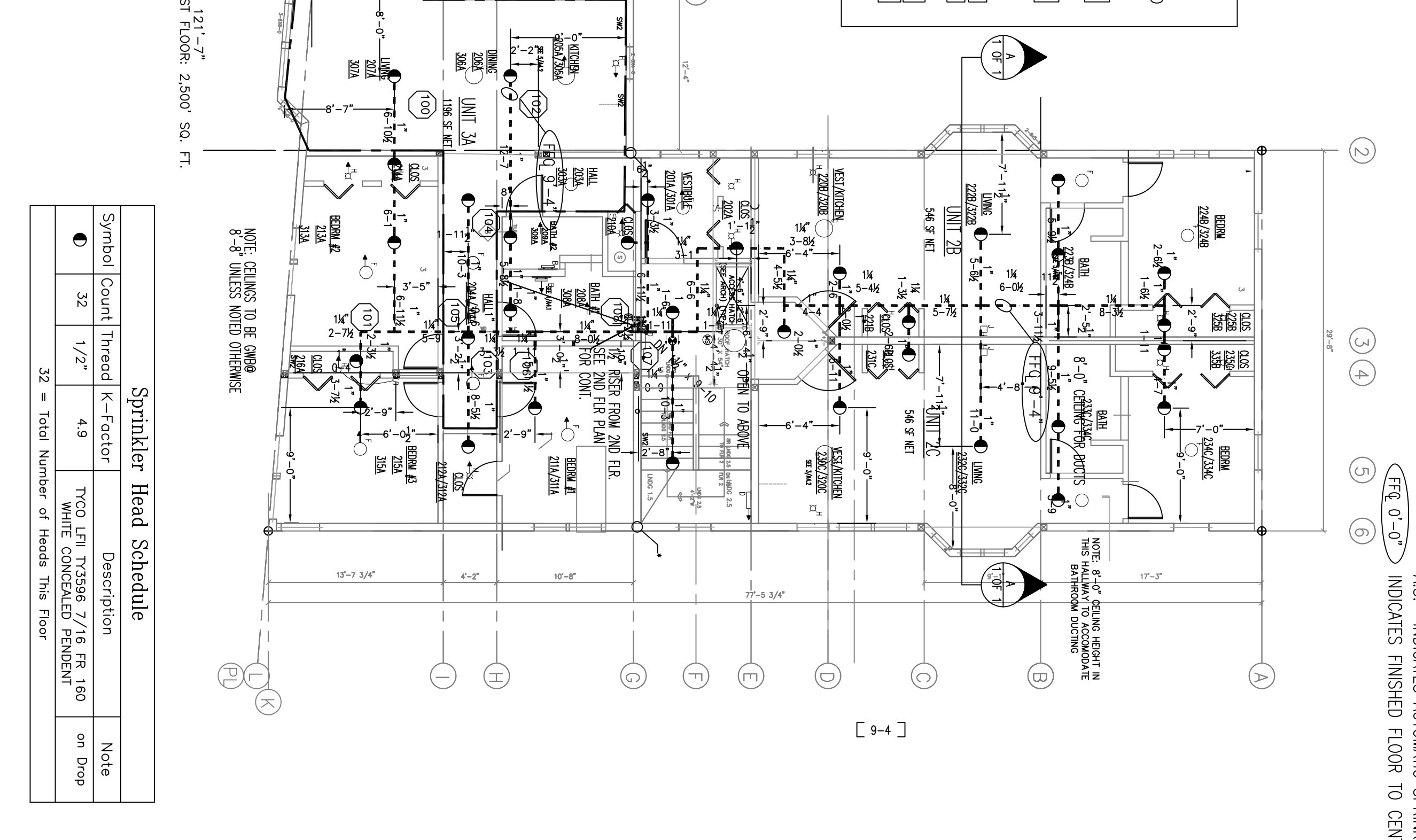
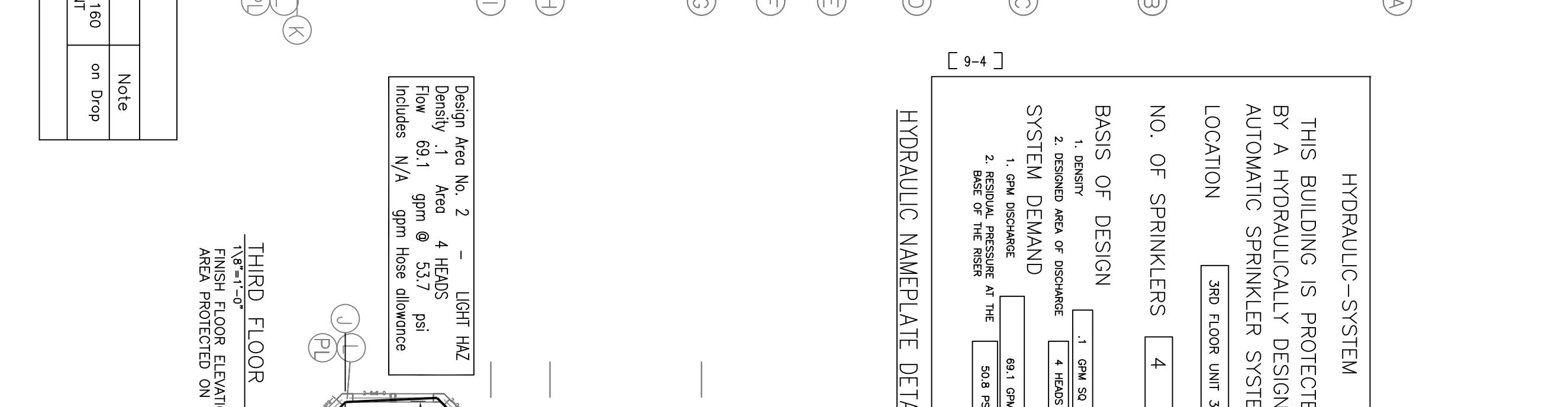
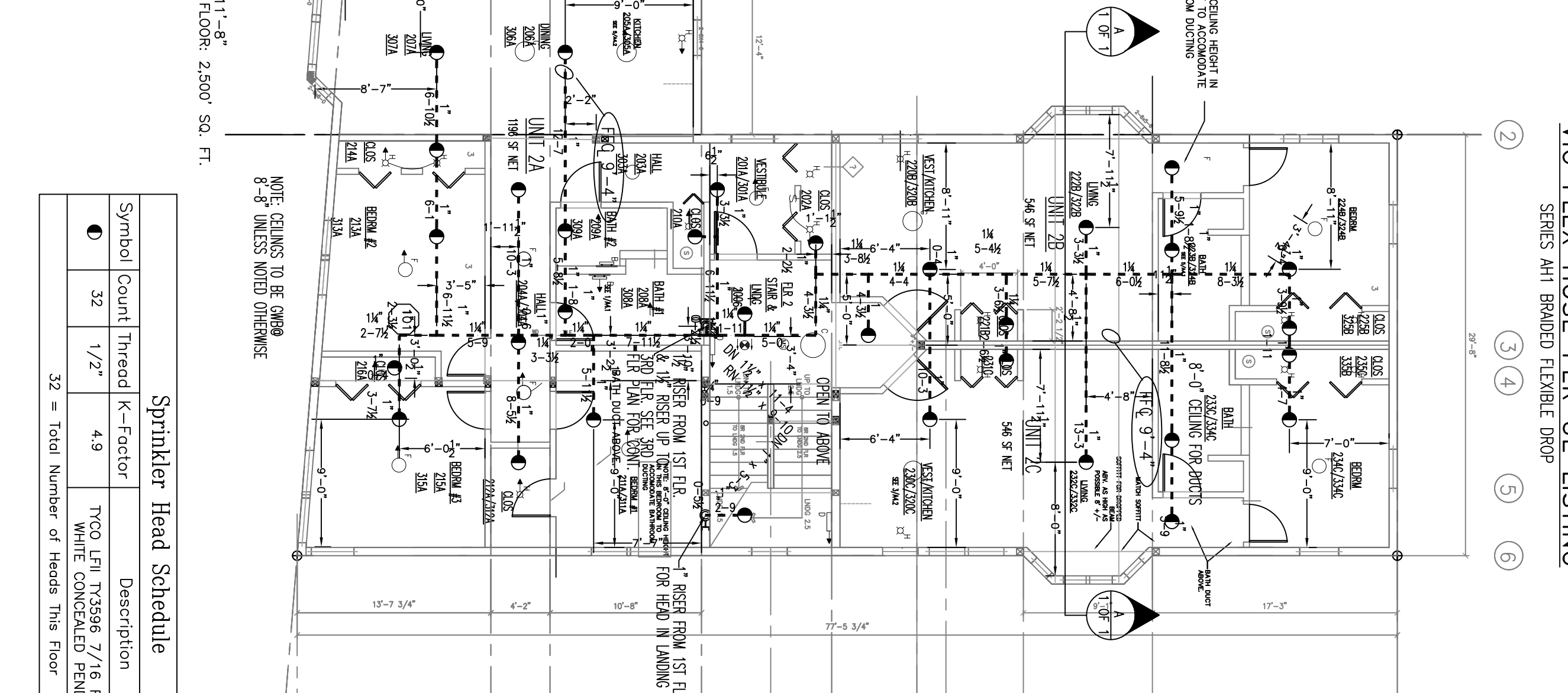
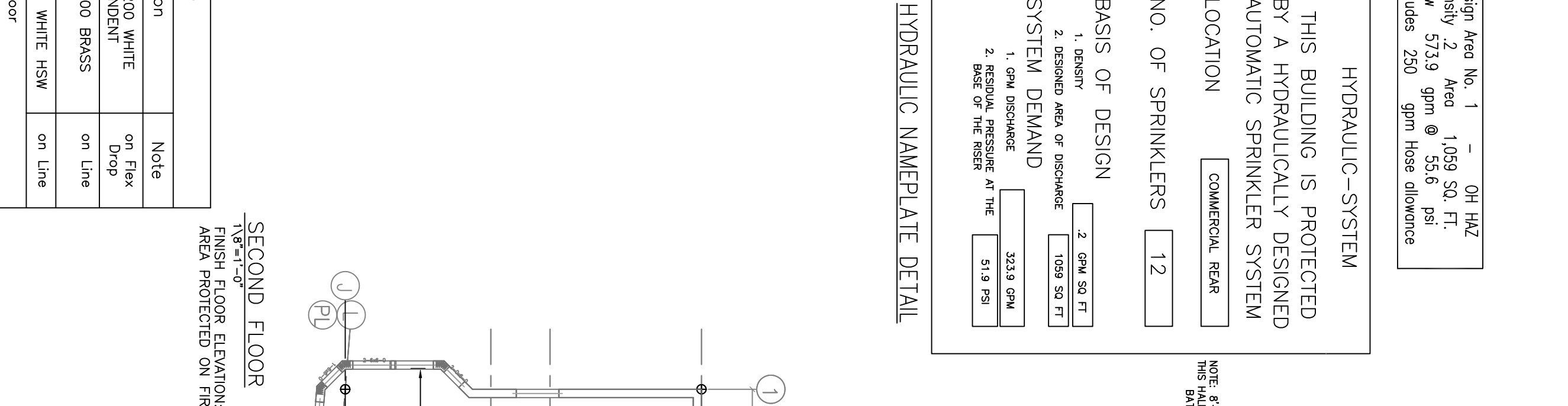
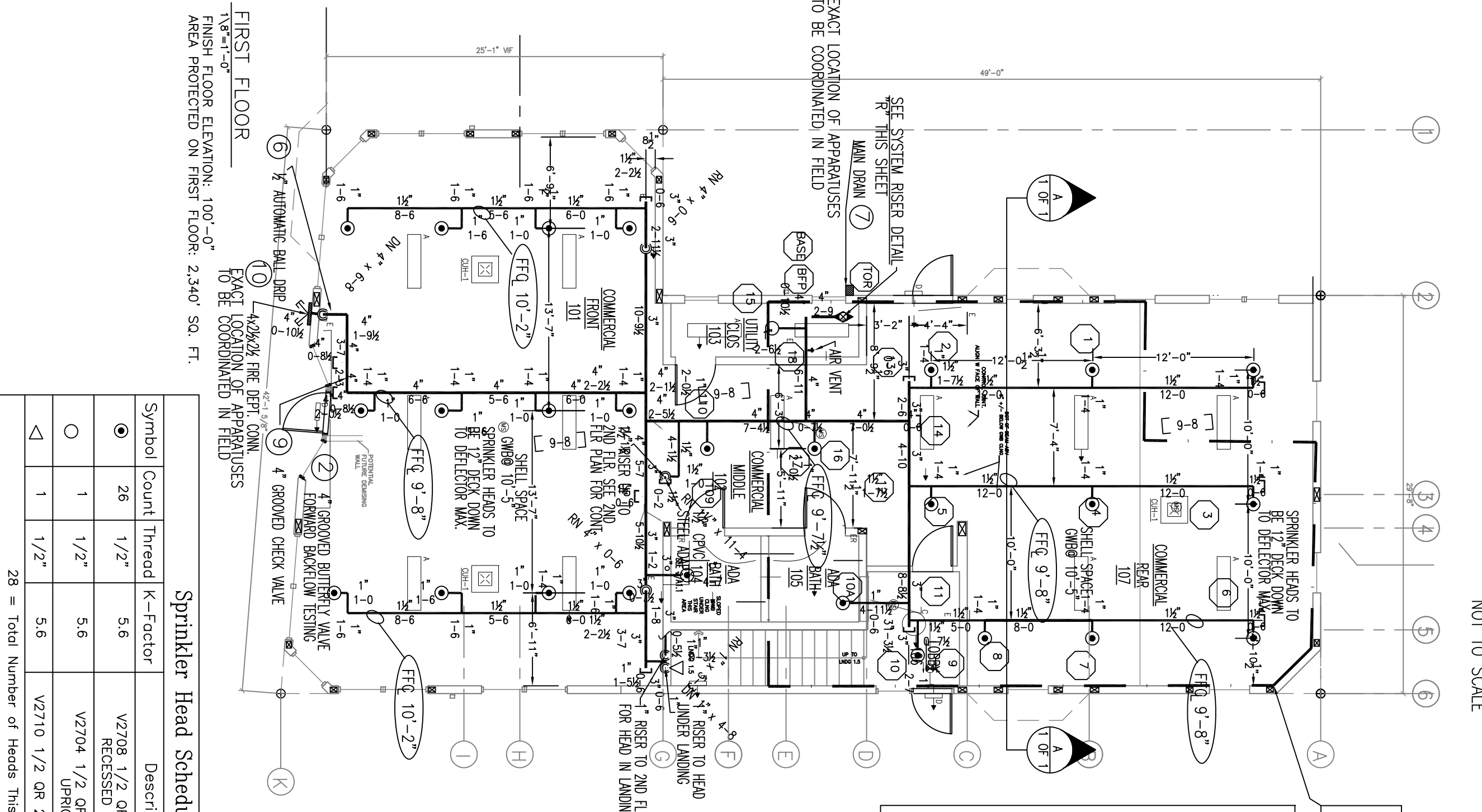
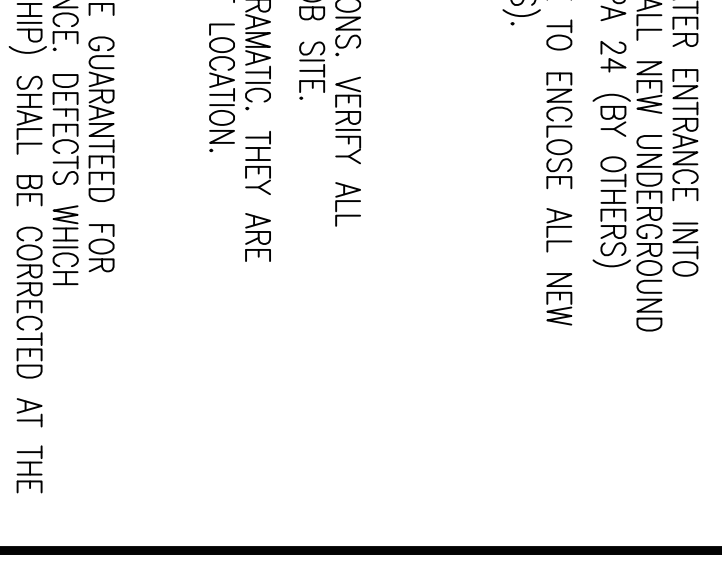
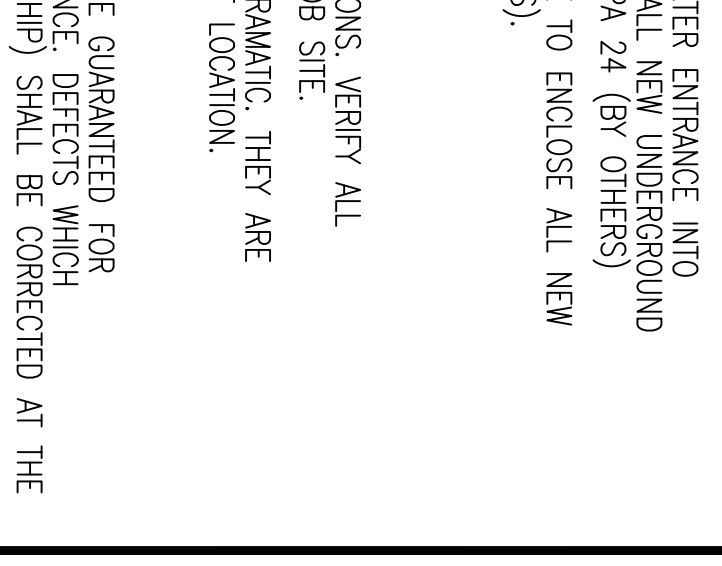
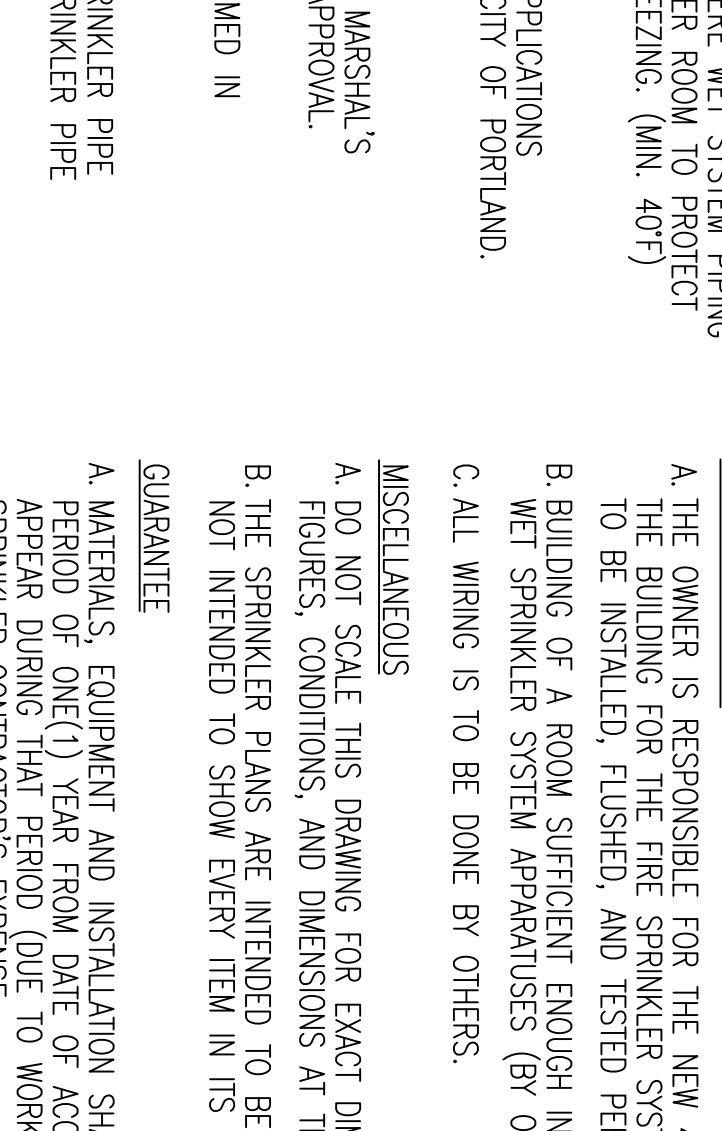
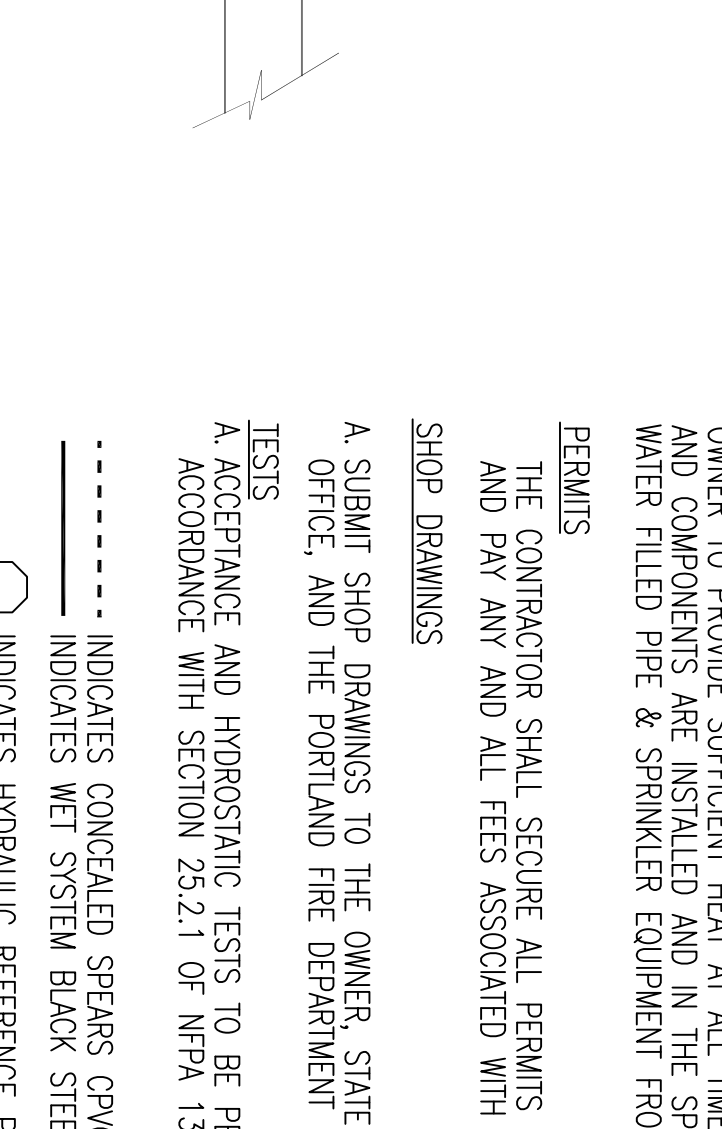
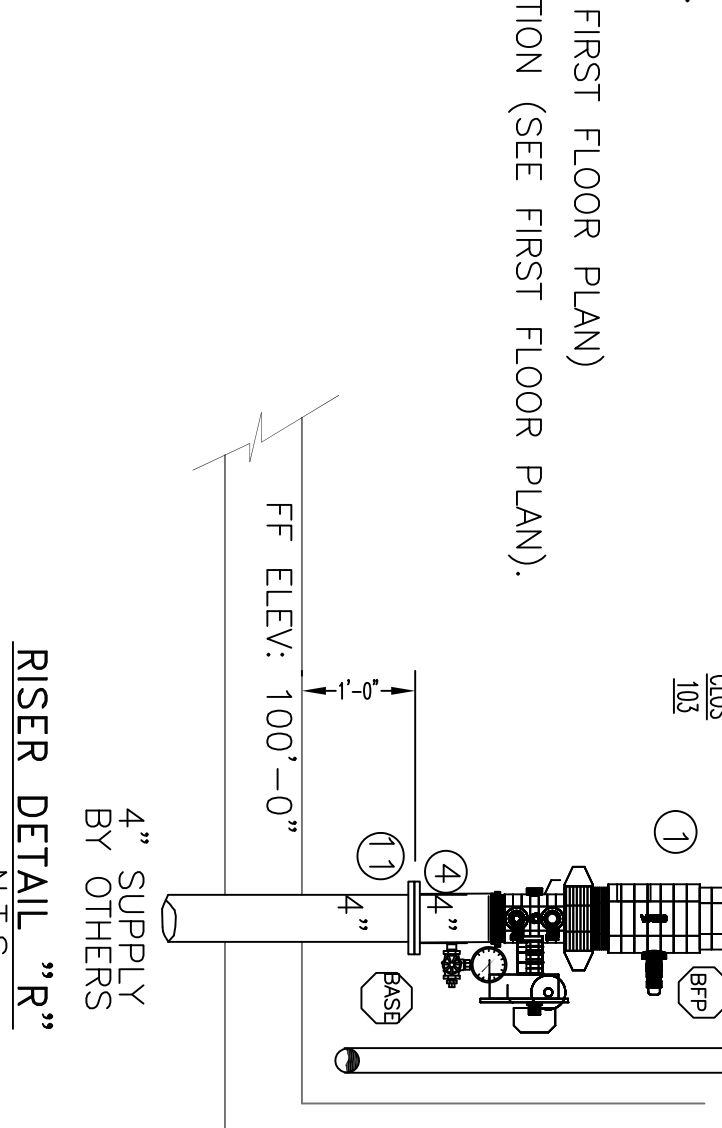
HEAD CHART FOR TYPICAL "E" RESIDENTIAL CONCEALED PENDENT K-FACTOR=4.9 SN # 12234

MAXIMUM SPACING FT. x FT.	MINIMUM FLOW AND RESIDUAL PRESSURE FOR 12" RISE FOR 12" RISE	MINIMUM FLOW AND RESIDUAL PRESSURE FOR 12" RISE FOR 12" RISE	MINIMUM FLOW AND RESIDUAL PRESSURE FOR 12" RISE FOR 12" RISE
12 x 12	13 GPM 7.0 PSI	13 GPM 7.0 PSI	13 GPM 7.0 PSI
14 x 14	13 GPM 7.0 PSI	13 GPM 7.0 PSI	13 GPM 7.0 PSI
16 x 16	13 GPM 7.0 PSI	13 GPM 7.0 PSI	13 GPM 7.0 PSI
18 x 18	17 GPM 12.0 PSI	17 GPM 12.0 PSI	17 GPM 12.0 PSI
20 x 20	20 GPM 16.7 PSI	20 GPM 16.7 PSI	20 GPM 16.7 PSI

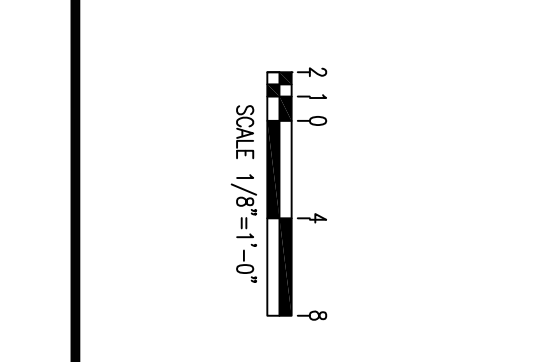


FRICITION LOSS DATA FOR VIC FLEX HOSE PER UL LISTING

LENGTH OF FLEXIBLE HOSE INCHES	OUTLET SIZE INCHES	EQ LENGTH OF 1" SCHD 40 PIPE WHERE C=120 FEET	MAXIMUM NO. OF BENDS
48"	3/4" STRAIGHT	78'	4
60"	3/4" ELB	112.2'	4
	3/4" STRAIGHT	108.4'	



ACCENDO FIRE PROTECTION, LLC
DESIGN INSTALLATION SERVICE
38 ADDITION ROAD
GREENE, MAINE 04236
(207) 946-6182



- General Notes
- All Pipe Locations are to be Field Measured Prior to Fabrication and Installation by Sprinkler Contractor.
 - All Dimensions Shown are Center to Center.
 - All High Temperature Heads are to be Field Located Where Required.
 - All Pipes and Hangers are to be Installed per NFPA #13.
 - Hangers are to be UL Listed and FM Approved.

SYMBOLS

Symbol	Description
(Circle with H)	Hydraulic Reference Points
(Circle with S)	Ex. Above Top of Steel
(Circle with T)	Ex. Below Top of Steel
(Circle with +)	Ex. Above Finished Floor
(Circle with -)	Ex. Below Finished Floor
(Circle with H)	Header Hanger Location
(Circle with D)	Down Up or Down

REVISIONS

REVISION	DESCRIPTION	DATE
1	ISSUED FOR PERMIT	7/10/17

SPRINKLER HEAD SCHEDULE

Symbol	Count	Thread	K-Factor	Description	Note
(Circle with H)	32	1/2"	4.9	TWO LPI CONCEALED PENDENT	on drop

SPRINKLER HEAD SCHEDULE

Symbol	Count	Thread	K-Factor	Description	Note
(Circle with H)	32	1/2"	4.9	TWO LPI CONCEALED PENDENT	on drop

GENERAL SPRINKLER SYSTEM DATA

- GENERAL CONTRACTOR: DUCAS CONSTRUCTION
- BUILDING ADDRESS: 502 STEVENS AVE PORTLAND, MAINE
- CONSTRUCTION: NEW WOOD FRAME STRUCTURE
- AREA PROTECTED BY SPRINKLER SYSTEM: THE TOTAL AREA PROTECTED IS 7,340 SQ. FT.
- MAXIMUM SPRINKLER HEAD SPACING: 15' x 15' OR 18' x 18' RESIDENTIAL
- MAXIMUM SQUARE FOOTAGE PER SPRINKLER HEAD: 225 OR 324 RESIDENTIAL SQ. FT.
- SPRINKLER SYSTEM DESIGNER: JMO NICET LEVEL III CERT # 116803
- SPRINKLER DESIGN CHECKED BY: GJO NICET LEVEL III CERT # 091641
- MAINE STATE CONTRACTORS LICENSE # 1048

NOTE UNDERGROUND TO BE INSTALLED, TESTED AND FLUSHED BY OTHERS IN ACCORDANCE WITH NFPA # 24 (ALL UNDERGROUND PIPING TO BE DONE BY OTHERS). ACCENDO FIRE PROTECTION LLC TO START @ FLANGE INSIDE BUILDING (INSTALLED BY OTHERS).

WATER DATA
STATIC: 45 PSI
RESIDUAL: 60 PSI
FLOW: 1,061 GPM
PIED: 111.11, 40 PSI
DATE: 7/5/17
TIME: 6:30 AM

INSTALLATION PROVIDED BY: PORTLAND WATER DIVISION

DATE: 7/10/17

SCALE: N.T.S.