

502 DEERING CENTER
NEW MIXED USE
502 STEVENS AVE, PORTLAND, ME

TITLE: TENANT IMPROVEMENT SHELL 1ST FLR

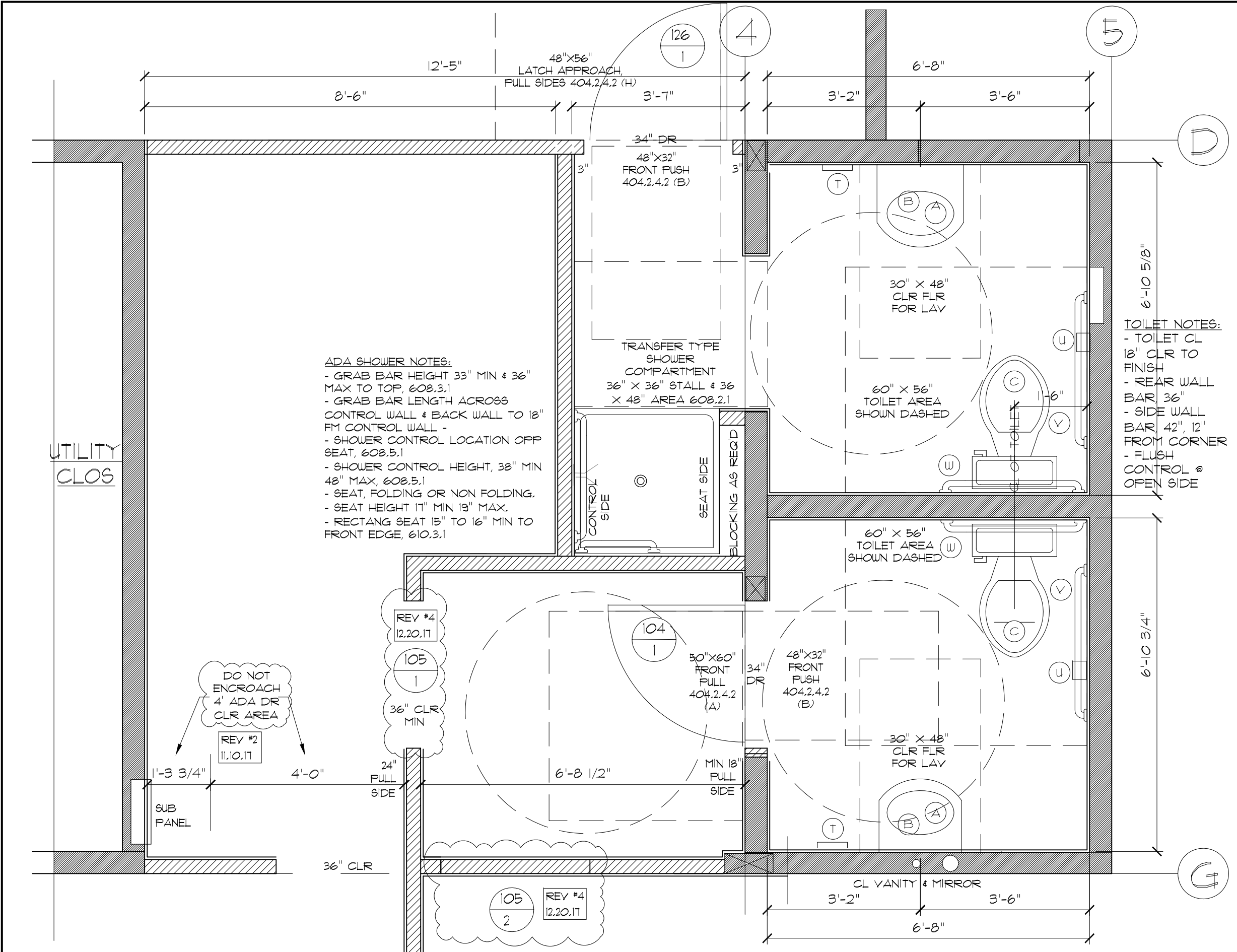
| REV | DATE | ISSUE |
|-----|------------|------------------|
| 6 | 1/09/2018 | PERMIT REVISIONS |
| 5 | 1/03/2018 | PERMIT REVISIONS |
| 4 | 12/20/2017 | PERMIT REVISIONS |
| 3 | 11/27/2017 | PERMIT REVISIONS |
| 2 | 11/10/2017 | PERMIT REVISIONS |
| 1 | 10/09/2017 | CONSTRUCTION |
| A | 09/26/2017 | PERMIT & BUDGET |

DRAWING NO:
A7.1

| SCOPE OF WORK | BASE BLDG PERMITTED | TENANT 1A | TENANT 1B (NO TENANT IMPROV AT THIS TIME VACANT FOR NOW) | TENANT 1C |
|--|---|--|---|---|
| FULLY SPRINKLED | NFPA IS PREVIOUSLY PERMITTED. NO CHANGE. | NO CHANGE | NO CHANGE | NO CHANGE |
| RATED STAIR ENCLOSURE | 1 HR PREVIOUSLY PERMITTED. NO CHANGE. SEE 4/AS.2.1.2 SAFETY. | NO CHANGE | NO CHANGE | NO CHANGE |
| RATED MECH CLOSET | 1 HR PREVIOUSLY PERMITTED. NO CHANGE. SEE 1/A1. | NO CHANGE | NO CHANGE | NO CHANGE |
| RATED CEILING & HEAD OF WALLS TO UNITS ABV | 1 HR + STC 50 PREVIOUSLY PERMITTED. NO CHANGE. SEE 4/AS.2.1.2 + 1/A1.1. | NO CHANGE | NO CHANGE | NO CHANGE |
| RATED DEMISING WALLS & DOORS | PREVIOUSLY NONE | NEW SAME AS 1 HR PREVIOUSLY PERMITTED TYPE 5, 2X4 W/ 1/2" 5/8" TYPE X BOTH SIDES. SEE 2C/A1.2 + 6/A1.1. | NO CHANGE | NO CHANGE |
| HEATING & COOLING | HEAT PUMPS W/ DUCTLESS & DUCTED DISTRIBUTION PREVIOUSLY PERMITTED. | 3 TON | 2.5 TON | 3 TON |
| VENTILATION | ERV PREVIOUSLY PERMITTED. NO CHANGE. | 150 CFM ERV | 150 CFM ERV | 150 CFM ERV |
| ELECTRIC SERVICE | SUB PANELS PREVIOUSLY PERMITTED. NO CHANGE. | 125 AMP | 125 AMP | 125 AMP |
| PLUMBING | (1) ADA BATHROOMS PREVIOUSLY PERMITTED. SEE 1/A1.1. | BATH 104 - WC LAV, BARS ETC AS PREVIOUSLY PERMITTED. NO CHANGE. ADD ADA SHOWER, SHOWER SAME AS SHOWER IN UNITS XX W/ BARS (ADD BLACK). SEPARATE SEAT BY TENANT. WC 123 - TOILET W/ TNY SINK. (2) ADA BATHROOMS PREVIOUSLY PERMITTED. SEE 1/A1.1. | BATH 106C - WC LAV, BARS ETC AS PREVIOUSLY PERMITTED. ADD ADA SHOWER, SHOWER SAME AS SHOWER IN UNITS XX W/ BARS (ADD BLACK). SEPARATE SEAT BY TENANT. WC 123C - TOILET W/ TNY SINK. (3) ADA BATHROOMS PREVIOUSLY PERMITTED. SEE 1/A1.1. | BATH 106C - WC LAV, BARS ETC AS PREVIOUSLY PERMITTED. ADD ADA SHOWER, SHOWER SAME AS SHOWER IN UNITS XX W/ BARS (ADD BLACK). SEPARATE SEAT BY TENANT. WC 123C - TOILET W/ TNY SINK. (3) ADA BATHROOMS PREVIOUSLY PERMITTED. SEE 1/A1.1. |
| FLOORS | CONC SLAB PREVIOUSLY PERMITTED. | CUSTOMER AREA - LVT WORK AREA - CONC. | CONC | CONC |
| CEILING | GUB FIRE BARRIER PREVIOUSLY PERMITTED. | GUB FIRE BARRIER + EXPOSED PIPES & WIRES PAINTED. | GUB FIRE BARRIER + EXPOSED PIPES & WIRES PAINTED. | GUB FIRE BARRIER + EXPOSED PIPES & WIRES PAINTED. |
| LIGHTING | TYP UTILITY FIXTURES PREVIOUSLY PERMITTED. | SUSPENDED FIXTURES BY TENANT. | SUSPENDED FIXTURES BY TENANT. | SUSPENDED FIXTURES BY TENANT. |
| FANS | PREVIOUSLY NONE | NONE | NONE | STANDARD SIZE TED REVERSIBLE 3 SPEED. |
| INSTALLED FIXTURES & EQUIPMENT | PREVIOUSLY NONE | INSTALLED BY TENANT. SEE EQUIPMENT KEY. | INSTALLED BY TENANT. SEE EQUIPMENT KEY. | NONE. MOVEABLE FURNITURE BY TENANT. |
| MOVEABLE FURNITURE | PREVIOUSLY NONE | BY TENANT. | BY TENANT. | BY TENANT. |

1 DESCRIPTION & SCOPE OF WORK
SCALE = NONE

TENANT IMPROVEMENT PERMIT APPLICATION #2017-01492.
THIS SHEET IS AN ADDENDUM TO PREVIOUSLY PERMITTED BASE BUILDING #2017-00612

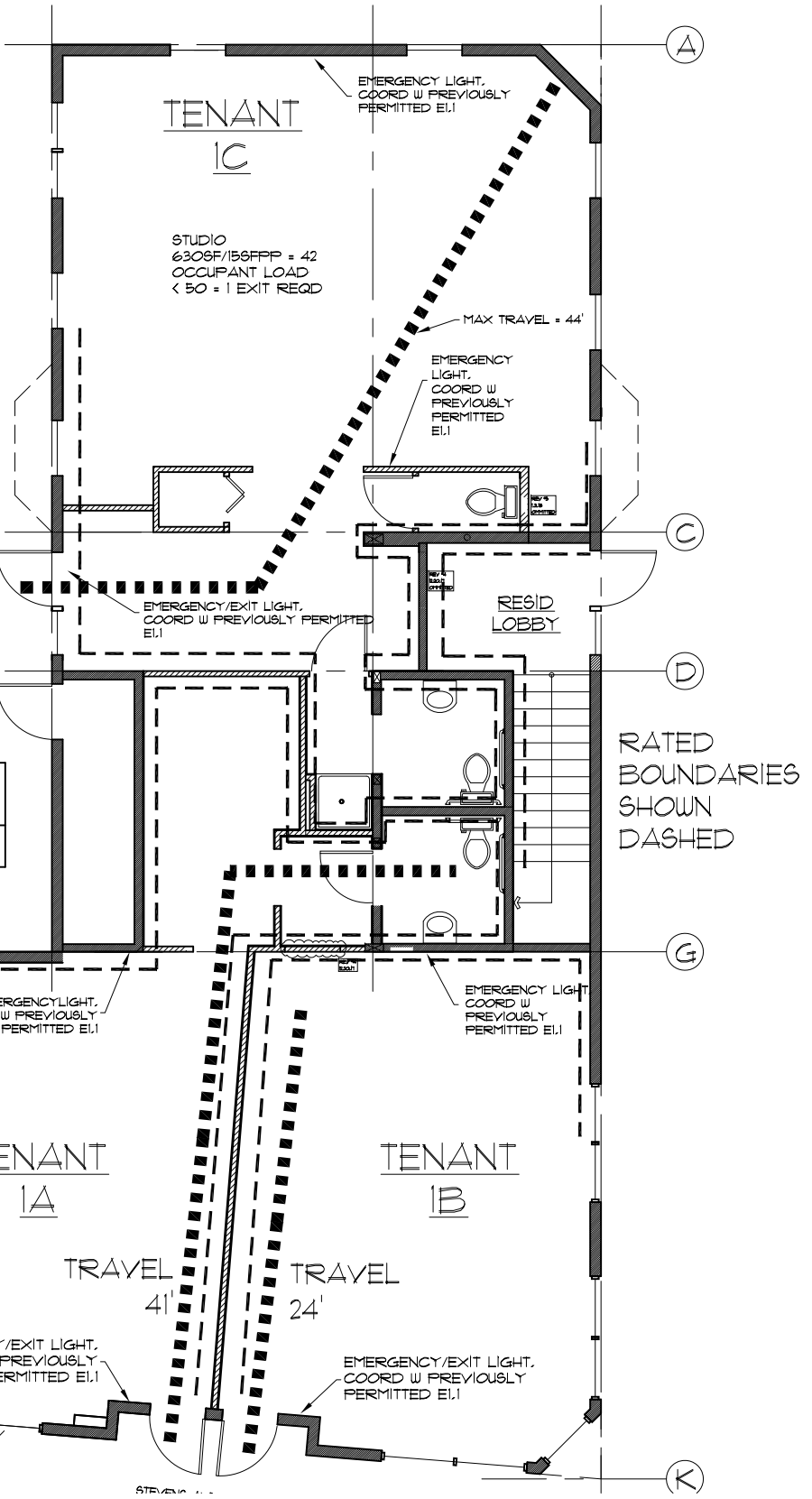


3 ENLARGED ADA BATH PLAN
SCALE = 1/2" = 1'-0"

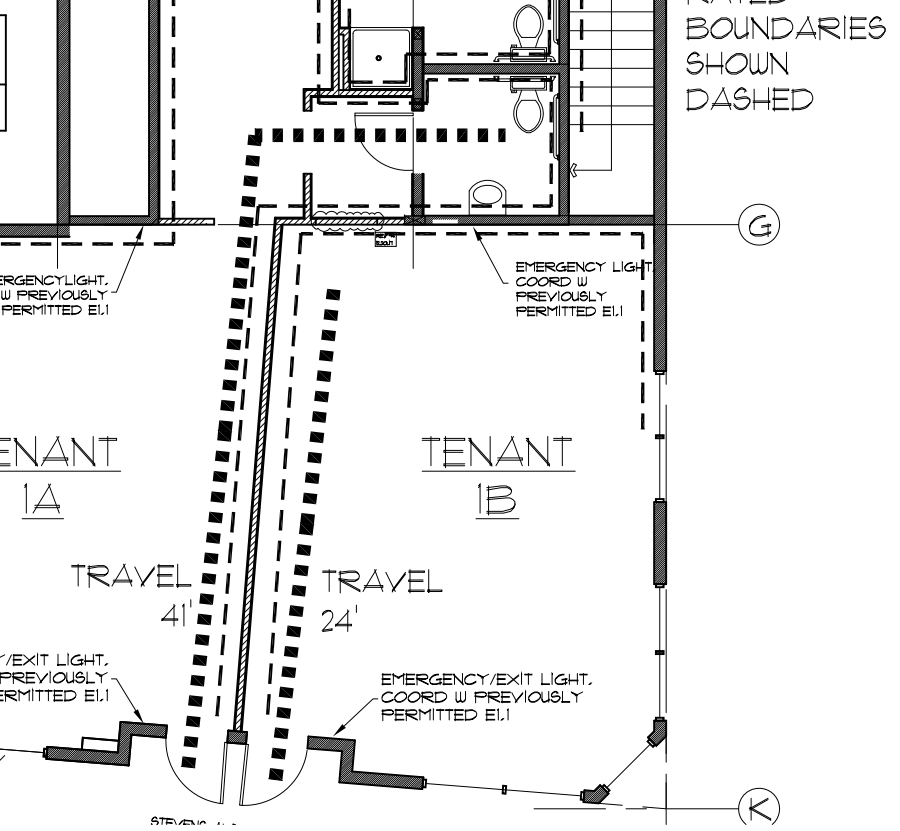
| LOCATION | DOOR | WIDTH x HEIGHT | THICK | MATL | FINISH | TYPE | RATING | FRAME | MATERIAL | DEPTH | THRESH | HARDWARE GROUP | FUNCTION |
|----------|--------------------------|-----------------------|-------|--------|--------|----------------|----------|--------------|----------|-------|--------|----------------|------------|
| 104/1 | ADA BATH 104 | 2'-10"x6'-8" | ADA | 1 3/8" | BIRCH | CLEAR | E | STEEL/PT-X | 2X4 | NO | X | TBD | FRIVACY |
| 105/1 | COMMON 105 | REMOVED, MIN 36" OPNG | | | | | | | | | | | |
| 105/2 | COMMON 105 | REMOVED | | | | | | | | | | | |
| 106/2 | STUDIO EXIT TO LOBBY 106 | 3'-0"x6'-8" | | 1 3/8" | WD | PTD BOTH SIDES | 1 HR | STEEL/PT-X | 2X4 | NO | X | TBD | EXIT ONLY |
| 122/1 | STORAGE 122 | 2'-4"x6'-8" | | 1 3/8" | BIRCH | CLEAR | H BIFOLD | FLAT BD/PT-X | 2X4 | NO | X | | HOOK & EYE |
| 123/1 | WC 123 | 2'-6"x6'-8" | | 1 3/8" | BIRCH | CLEAR | E | WOOD/PT-X | 2X4 | NO | X | | FRIVACY |
| 124/1 | STUDIO 124 PAIR POCKET | 3'-0"x8'-0" | | 1 3/8" | BIRCH | CLEAR | E | POCKET | 2X4 | TBD | X | | TBD |

COMMERCIAL GRADE POCKET DR FRAME, 36X36X2 SIDE FOR 2X4 WALL.
NOTE: POCKET DRG MIGHT BE CUSTOM BY TENANT

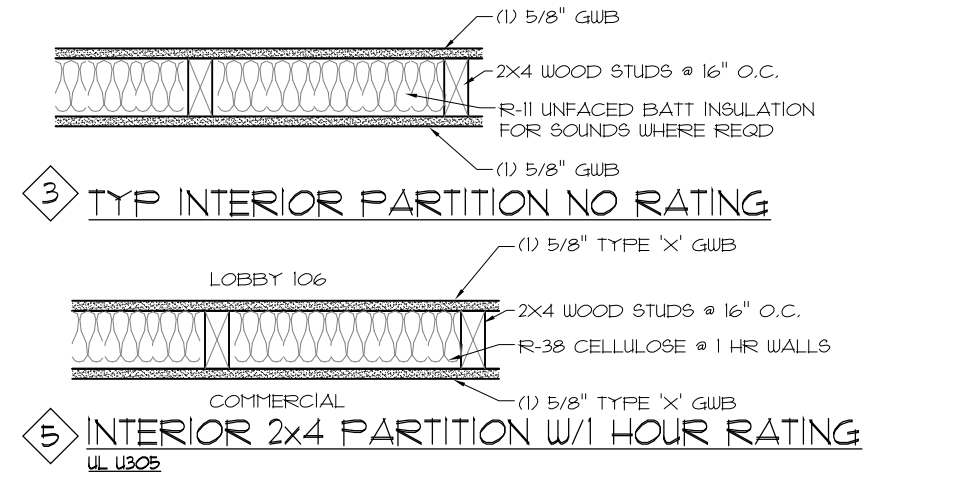
8 DOOR SCHEDULE
SCALE = NONE



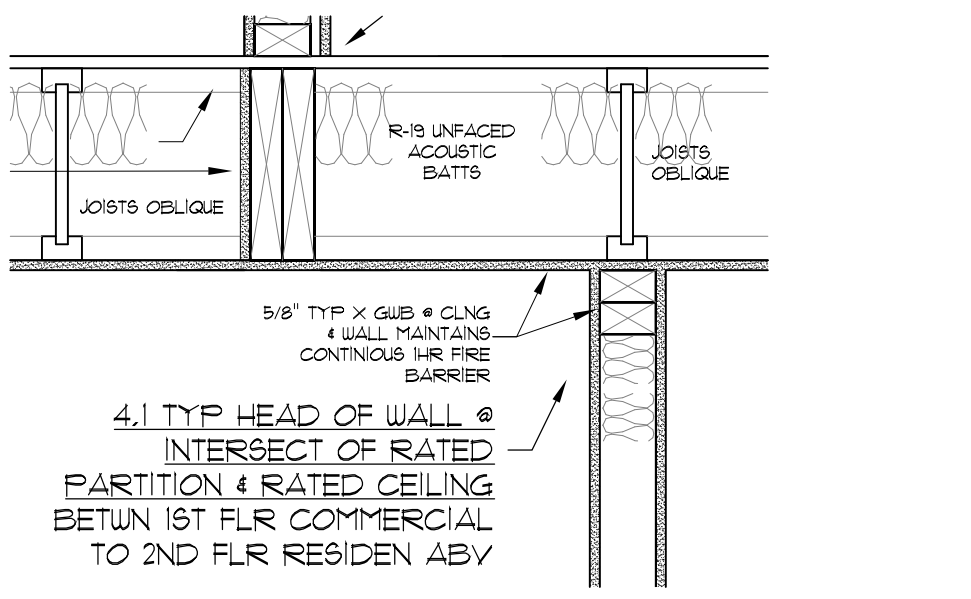
5 LIFE SAFETY
SCALE = NONE



WALLS PREVIOUSLY PERMITTED. NO CHANGES, NOT INCLUDED IN THIS TI PERMIT.
NEW PARTITIONS INCLUDED IN THIS TI PERMIT.



6 WALL TYPES SAME AS BASE BLDG, 2C/A1.2
SCALE = 1" = 1'-0"

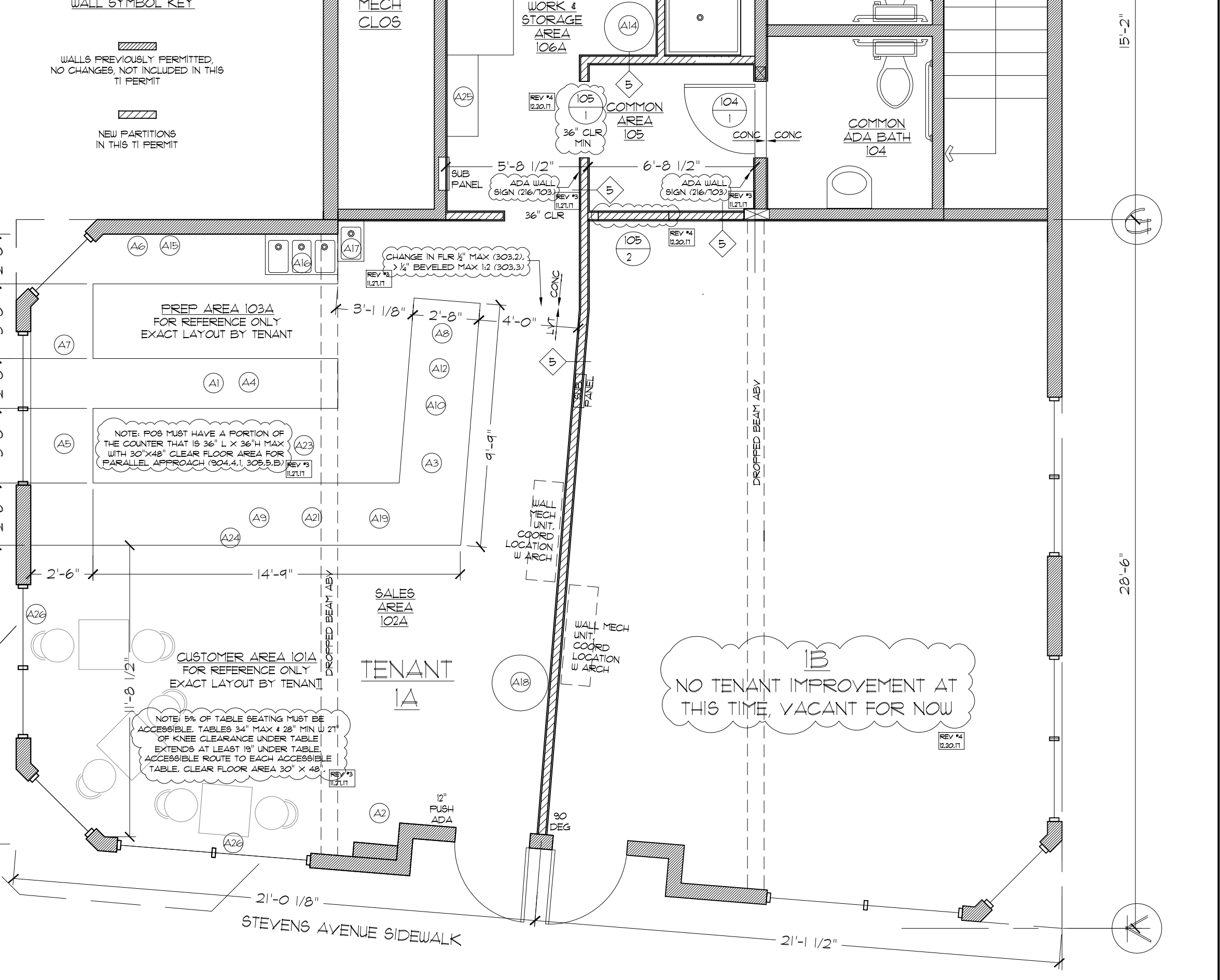


7 HEAD OF WALL SAME AS BASE BLDG, 4/A1.2
SCALE = 1" = 1'-0"

NOTE: ALL FIXTURES, EQUIPMENT & FURNITURE PROVIDED & INSTALLED BY TENANT. ALL FIXED FURNITURE TO BE ADA COMPLIANT.

| TAG | COFFEE EQUIPMENT |
|-----|---|
| A1 | ESPRESSO GRINDER |
| A2 | REGULAR COFFEE GRINDER |
| A3 | COFFEE CONDENSER |
| A4 | ESPRESSO MACHINE |
| A5 | FOOD WARMER |
| A6 | ICE MACHINE |
| A7 | BLENDER ON CART |
| A8 | OVEN QUICK HALF SHEET |
| A9 | INDUCTION BURNER |
| A10 | DISHWASHER |
| A11 | FRIDGE 3 DOOR (W/ STAINLESS TOP) |
| A12 | FRIDGE 2 DOOR (W/ STAINLESS TOP) |
| A13 | FRIDGE/FREEZER COMBO 3 DOORS |
| A14 | CONVEYOR TOASTER |
| A15 | RESERVED |
| A16 | WATER HEATER 17 GAL |
| A17 | MICROWAVE |
| A18 | TRIPLE SINK |
| A19 | HAND SINK |
| A20 | DISPLAY |
| A21 | ROUND FRIDGE |
| A22 | GRAB N GO |
| A23 | GRAB N GO STANDING |
| A24 | TECHNOLOGY |
| A25 | COMPUTER WORK STATION/POINT OF SALE |
| A26 | RESERVED |
| A27 | MONITORS FOR MENU PRODUCT, IPADS, BOARD |
| A28 | BUILT INS & FINISHES |
| A29 | GLASS SCREEN |
| A30 | STORAGE SHELVES FOR PAPER GOODS, MAX 12" W/ 12" H |
| A31 | POWER STRIP FOR CUSTOMERS |

4 TENANT 1A EQUIP KEY
SCALE = NONE



2 1ST FLOOR TENANT IMPROVEMENT PLAN
SCALE = 1/4" = 1'-0"