



502 DEERING CENTER  
NEW MIXED USE  
502 STEVENS AVE, PORTLAND ME

**TITLE: TENANT IMPROVEMENT SHELL 1ST FLR**

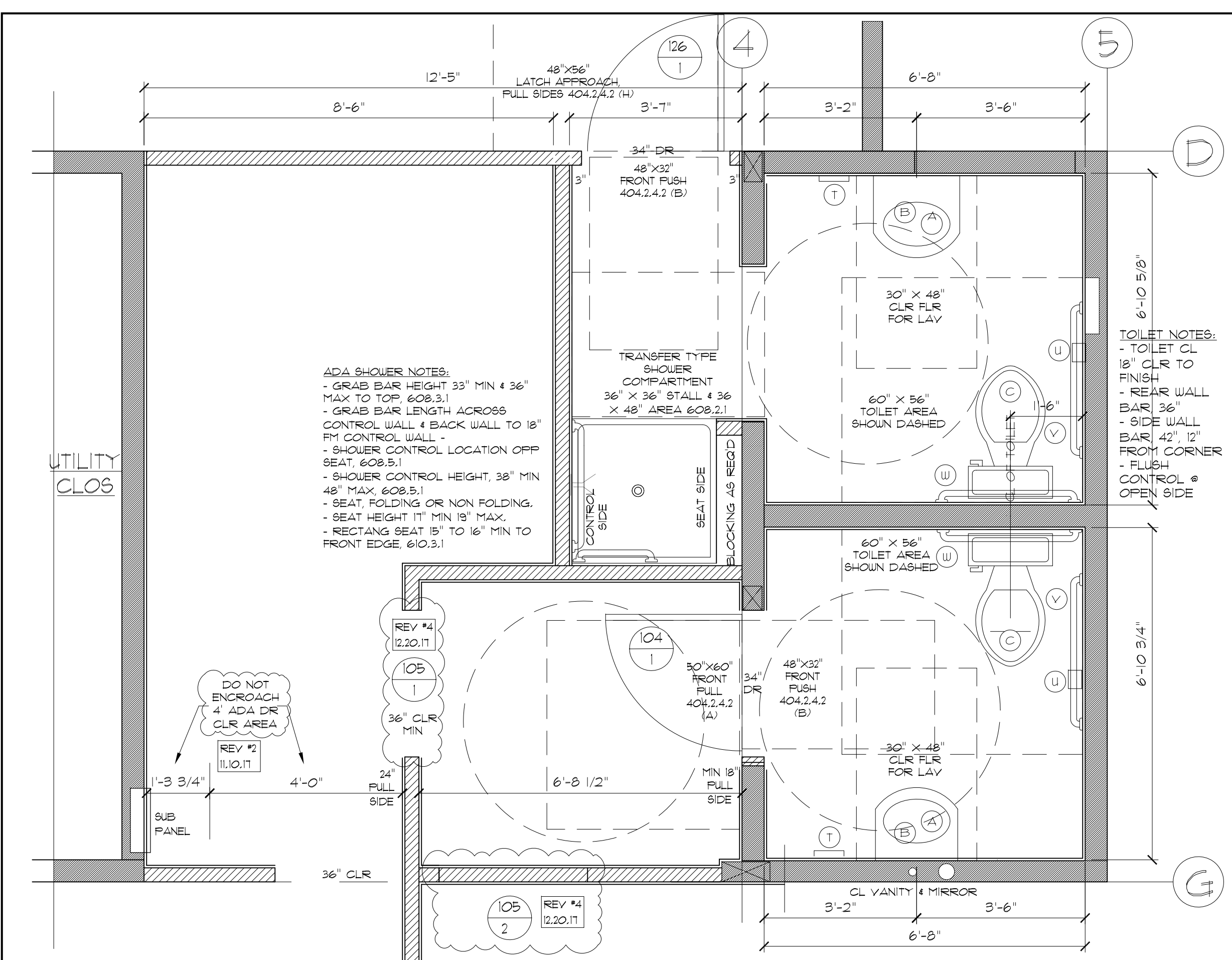
REV	DATE	ISSUE
7	4/05 2018	PERMIT REVISIONS
6	1/09 2018	PERMIT REVISIONS
5	1/03 2018	PERMIT REVISIONS
4	12/20 2017	PERMIT REVISIONS
3	11/27 2017	PERMIT REVISIONS
2	11/10 2017	PERMIT REVISIONS
1	10/09 2017	CONSTRUCTION
A	09/26 2017	PERMIT & BUDGET

DRAWING NO:  
**A7.1**

SCOPE OF WORK	BASE BLDG PERMITTED	TENANT 1A	TENANT 1B (NO TENANT IMPROV AT THIS TIME VACANT FOR NOW)	TENANT 1C
FULLY SPRINKLED	NFPA 13 PREVIOUSLY PERMITTED NO CHANGE	NO CHANGE	NO CHANGE	NO CHANGE
RATED STAIR ENCLOSURE	1 HR PREVIOUSLY PERMITTED NO CHANGE SEE 4/A/1.2 SAFETY	NO CHANGE	NO CHANGE	NO CHANGE
RATED MECH CLOSET	1 HR PREVIOUSLY PERMITTED NO CHANGE SEE 1/A/1	NO CHANGE	NO CHANGE	NO CHANGE
RATED CEILING & HEAD OF WALLS TO UNITS ABV	1 HR + STC 50 PREVIOUSLY PERMITTED NO CHANGE SEE 4/A/1.2 + 1/A/1	NO CHANGE	NO CHANGE	NO CHANGE
RATED DEMISING WALLS & DOORS	PREVIOUSLY NONE	NEW SAME AS 1 HR PREVIOUSLY PERMITTED TYPE 5, 2X4 W/ 1/2" 5/8" TYPE X BOTH SIDES SEE 2/A/1.2 + 6/A/1.1	NO CHANGE	NO CHANGE
HEATING & COOLING	HEAT PUMPS W/ DUCTLESS & DUCTED DISTRIBUTION PREVIOUSLY PERMITTED	3 TON	2.5 TON	3 TON
VENTILATION	ERV PREVIOUSLY PERMITTED, NO CHANGE	150 CFM ERV	150 CFM ERV	150 CFM ERV
ELECTRIC SERVICE	SUB PANELS PREVIOUSLY PERMITTED, NO CHANGE	125 AMP	125 AMP	125 AMP
PLUMBING	(1) ADA BATHROOMS PREVIOUSLY PERMITTED, SEE 1/A/1	BATH 104 - WC LAV, BARS ETC AS PREVIOUSLY PERMITTED. ADD ADA SHOWER, SHOWER SAME AS SHOWER IN UNITS 104 W/ BARS (ADD BARS). SEPARATE SEAT-BN TENANT. WC 123 - TOILET W/ TNY SINK. (2) ADA BATHROOMS PREVIOUSLY PERMITTED, SEE 1/A/1	BATH 106C - WC LAV, BARS ETC AS PREVIOUSLY PERMITTED. ADD ADA SHOWER, SHOWER SAME AS SHOWER IN UNITS 104 W/ BARS (ADD BARS). SEPARATE SEAT-BN TENANT. WC 123 - TOILET W/ TNY SINK. (3) ADA BATHROOMS PREVIOUSLY PERMITTED, SEE 1/A/1	BATH 106C - WC LAV, BARS ETC AS PREVIOUSLY PERMITTED. ADD ADA SHOWER, SHOWER SAME AS SHOWER IN UNITS 104 W/ BARS (ADD BARS). SEPARATE SEAT-BN TENANT. WC 123 - TOILET W/ TNY SINK. (4) ADA BATHROOMS PREVIOUSLY PERMITTED, SEE 1/A/1
FLOORS	CONC SLAB PREVIOUSLY PERMITTED	CUSTOMER AREA - LVT WORK AREA - CONC	CONC	CONC
CEILING	GWB FIRE BARRIER PREVIOUSLY PERMITTED	GWB FIRE BARRIER + EXPOSED PIPES & WIRES PAINTED	GWB FIRE BARRIER + EXPOSED PIPES & WIRES PAINTED	GWB FIRE BARRIER + EXPOSED PIPES & WIRES PAINTED
LIGHTING	TYP UTILITY FIXTURES PREVIOUSLY PERMITTED	SUSPENDED FIXTURES BY TENANT	SUSPENDED FIXTURES BY TENANT	SUSPENDED FIXTURES BY TENANT
FANS	PREVIOUSLY NONE	NONE	NONE	STANDARD SIZE TED REVERSIBLE 3 SPEED
INSTALLED FIXTURES & EQUIPMENT	PREVIOUSLY NONE	INSTALLED BY TENANT, SEE EQUIPMENT KEY	INSTALLED BY TENANT, SEE EQUIPMENT KEY	NONE MOVEABLE FURNITURE BY TENANT
MOVEABLE FURNITURE	PREVIOUSLY NONE	BY TENANT	BY TENANT	BY TENANT

**1 DESCRIPTION & SCOPE OF WORK**  
SCALE = NONE

**TENANT IMPROVEMENT PERMIT APPLICATION #2017-01492.**  
**THIS SHEET IS AN ADDENDUM TO PREVIOUSLY PERMITTED BASE BUILDING #2017-00612**

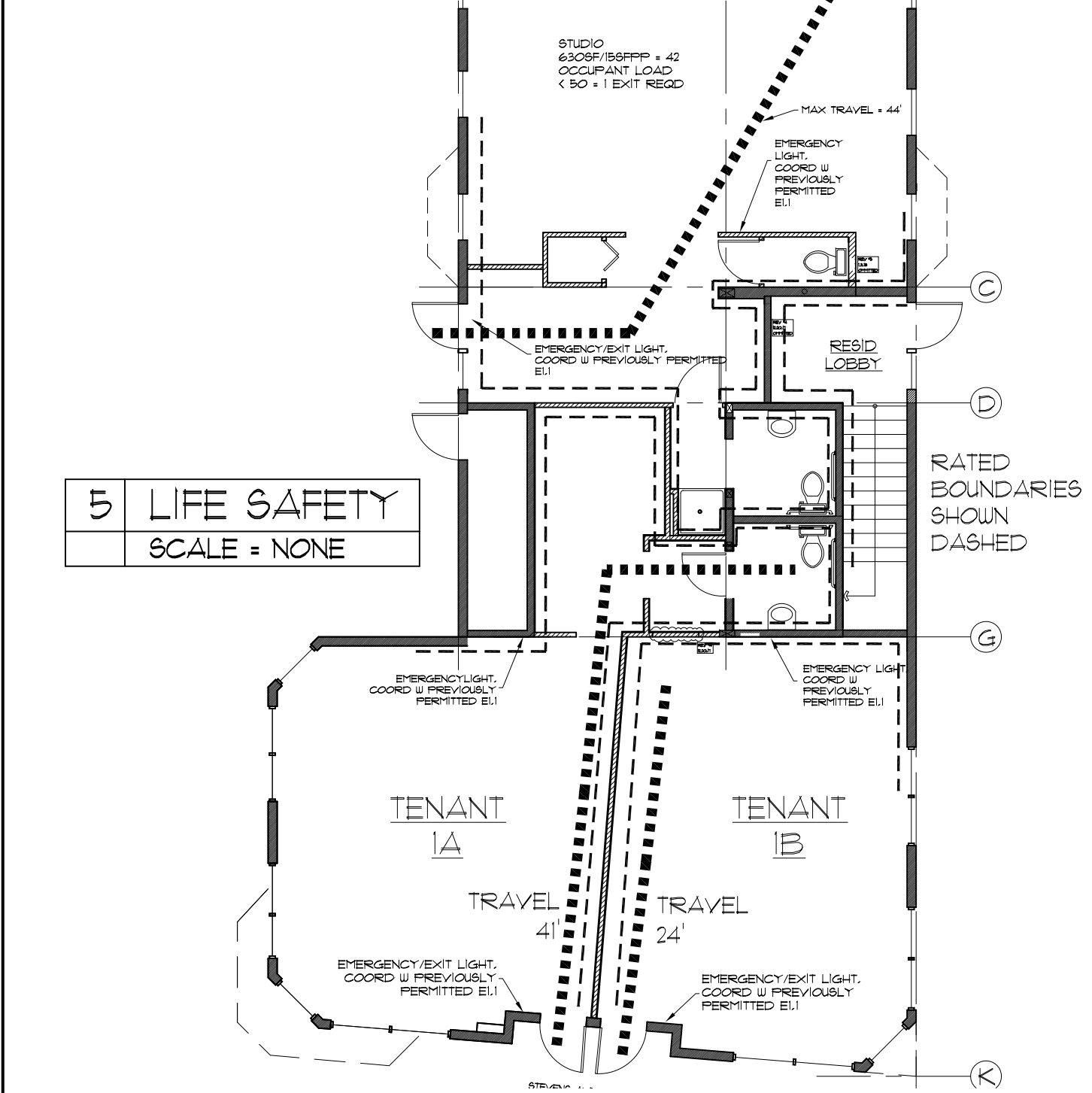


**3 ENLARGED ADA BATH PLAN**  
SCALE = 1/2" = 1'-0"

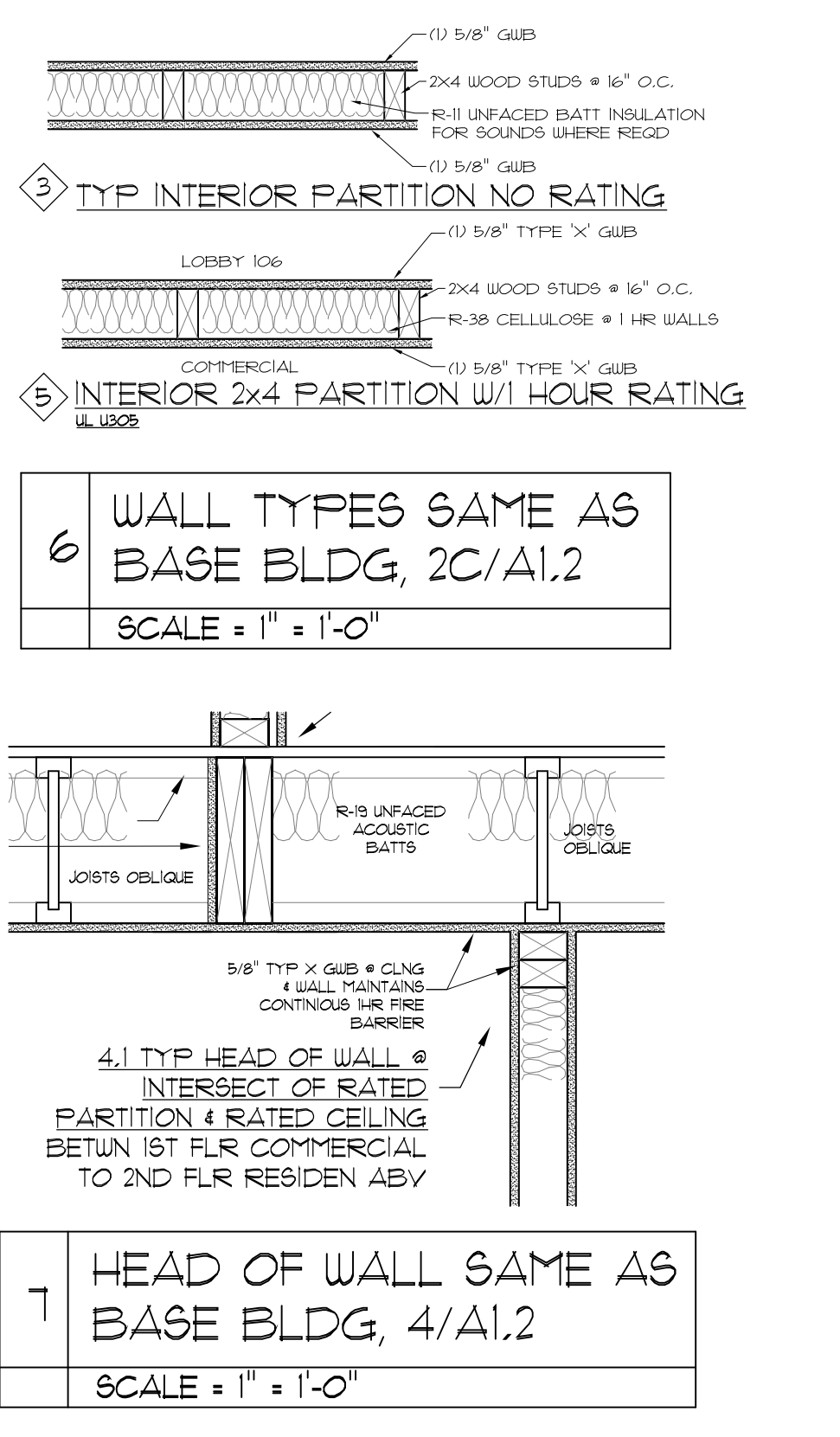
LOCATION	DOOR	WIDTH x HEIGHT	THICK	MATL	FINISH	TYPE	RATING	FRAME	MATERIAL	DEPTH	THRESH	HARDWARE GROUP	FUNCTION
104/1	ADA BATH 104	2'-10"x6'-8"	ADA	1 3/8"	BIRCH	CLEAR	E	STEEL/PT-X	2X4	NO	X	TBD	FRIVACY
105/1	COMMON 105	REMOVED, MIN 36" OPNG											
105/2	COMMON 105	REMOVED											
106/2	STUDIO EXIT TO LOBBY 106	3'-0"x6'-8"		1 3/8"	WD	PTD BOTH SIDES	1 HR	STEEL/PT-X	2X4	NO	X	TBD	EXIT ONLY
122/1	STORAGE 122	2'-4"x6'-8"		1 3/8"	BIRCH	CLEAR	H BIFOLD	FLAT BD/PT-X	2X4	NO	X	HOOK & EYE	
123/1	WC 123	2'-6"x6'-8"		1 3/8"	BIRCH	CLEAR	E	WOOD/PT-X	2X4	NO	X	TBD	FRIVACY
124/1	STUDIO 124 PAIR POCKET	3'-0"x8'-0"		1 3/8"	BIRCH	CLEAR	E	POCKET	2X4	TBD	X	TBD	

COMMERCIAL GRADE POCKET DR FRAME, 36X36X2 SIDE FOR 2X4 WALL.  
NOTE: POCKET DRG MIGHT BE CUSTOM BY TENANT

**8 DOOR SCHEDULE**  
SCALE = NONE



**5 LIFE SAFETY**  
SCALE = NONE



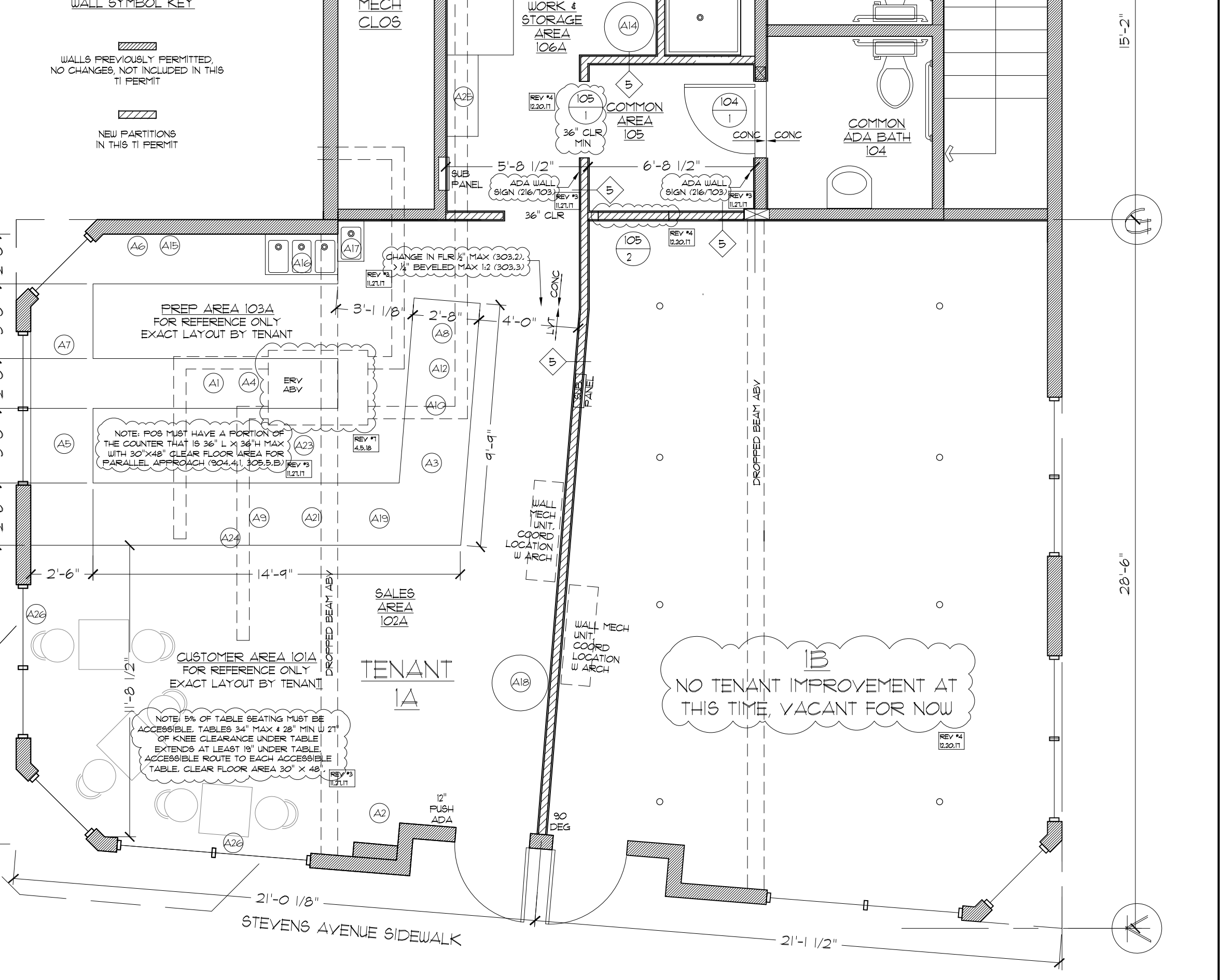
**6 WALL TYPES SAME AS BASE BLDG, 2C/A1.2**  
SCALE = 1" = 1'-0"

**7 HEAD OF WALL SAME AS BASE BLDG, 4/A1.2**  
SCALE = 1" = 1'-0"

NOTE: ALL FIXTURES, EQUIPMENT & FURNITURE PROVIDED & INSTALLED BY TENANT. ALL FIXED FURNITURE TO BE ADA COMPLIANT.

TAG	COFFEE EQUIPMENT
A1	ESPRESSO GRINDER
A2	REGULAR COFFEE GRINDER
A3	COFFEE CONDENSER MACHINES
A4	FOOD WARMER
A5	ICE MACHINE
A6	BLENDER ON CART
A7	OVEN QUICK HALF SHEET
A8	INDUCTION BURNER
A9	DISHWASHER
A10	FRIDGE 3 DOOR (W/ STAINLESS TOP)
A11	FRIDGE 2 DOOR (W/ STAINLESS TOP)
A12	FRIDGE/FREEZER COMBO 3 DOORS
A13	CONVEYOR TOASTER
A14	RESERVED
A15	WATER HEATER 17 GAL
A16	MICROWAVE
A17	TRIPLE SINK
A18	HAND SINK
A19	DISPLAY
A20	ROUND FRIDGE
A21	GRAB N GO STANDING
A22	RESERVED
A23	MONITORS FOR MENU PRODUCT, IPADS, BOARD
A24	BUILT INS & FINISHES
A25	GLASS SCREEN
A26	STORAGE SHELVES FOR PAPER GOODS, MAX (12" W/ 12" H) OF ONE CLEARANCE UNDER TABLE
A27	POWER STRIP FOR CUSTOMERS

**4 TENANT 1A EQUIP KEY**  
SCALE = NONE



**2 1ST FLOOR TENANT IMPROVEMENT PLAN**  
SCALE = 1/4" = 1'-0"