

APPLIANCE SCHEDULE

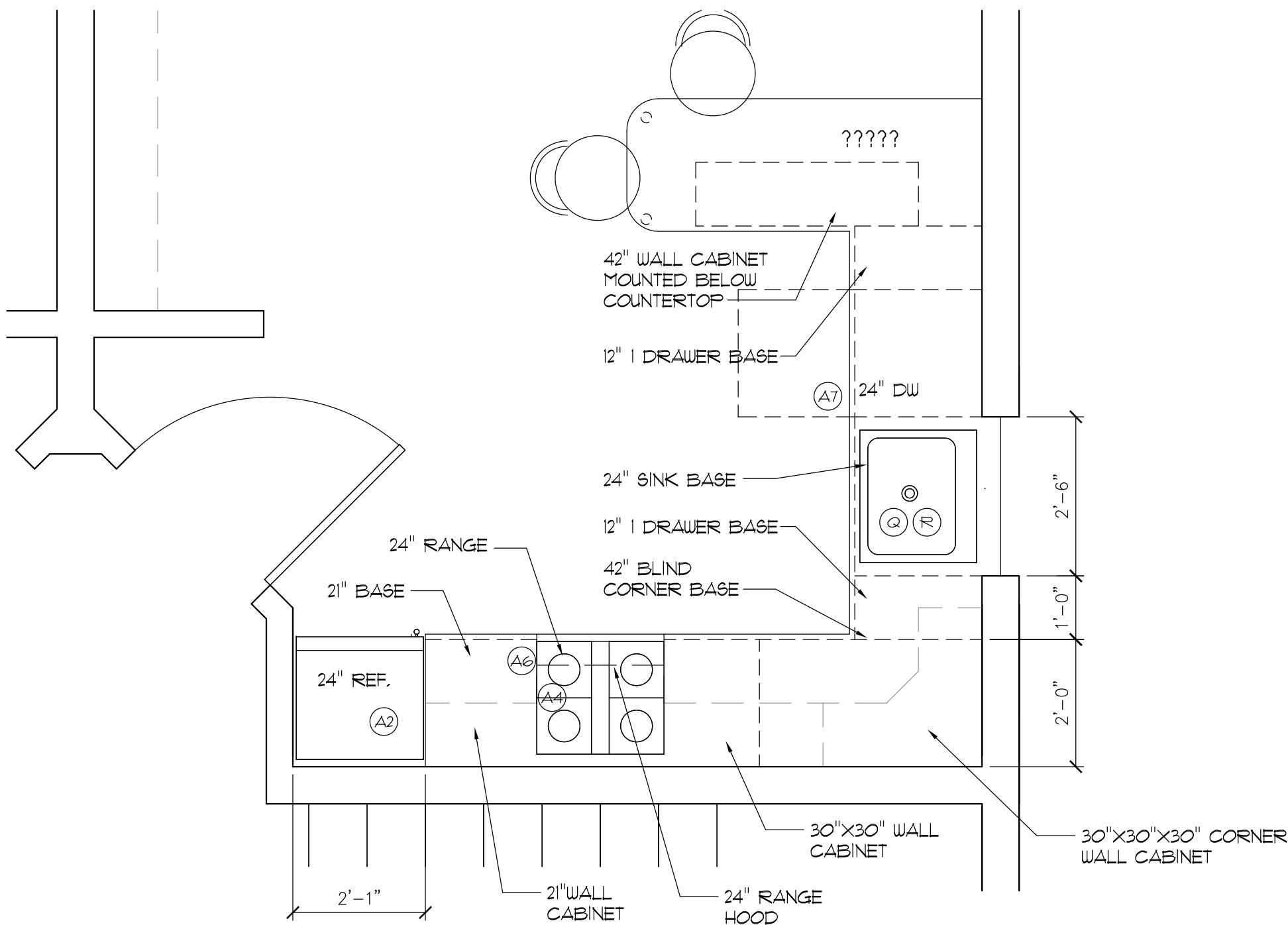
TYPE	FINISH	SPECIFICATION	SUPPLIED BY:	INSTALLED BY:	NOTES
(A1) REFRIGERATOR	WHITE	FRIGIDAIRE 30" FFHT1821Q W	CONTRACTOR	CONTRACTOR	
(A2) REFRIGERATOR	WHITE	FRIGIDAIRE 24" FFET1022Q W	CONTRACTOR	CONTRACTOR	
(A3) RANGE	WHITE	FRIGIDAIRE 30" FFEF3015P W	CONTRACTOR	CONTRACTOR	
(A4) RANGE	WHITE	PREMIER 24" ECK2400P - PEERLESS-PREMIER APPLIANCE CO.	CONTRACTOR	CONTRACTOR	
(A5) RANGE HOOD	WHITE	BROAN 40000 SERIES (DUCTED)	CONTRACTOR	CONTRACTOR	
(A6) RANGE HOOD	WHITE	BROAN 41000 SERIES (NON-DUCTED)	CONTRACTOR	CONTRACTOR	
(A7) DISHWASHER	WHITE	FRIGIDAIRE 24" FDB2410HI W	CONTRACTOR	CONTRACTOR	
(A8) EXHAUST FAN	WHITE	---	CONTRACTOR	CONTRACTOR	
MAILBOX	WHITE	---	CONTRACTOR	CONTRACTOR	

1 APPLIANCE FIXTURE SCHEDULE

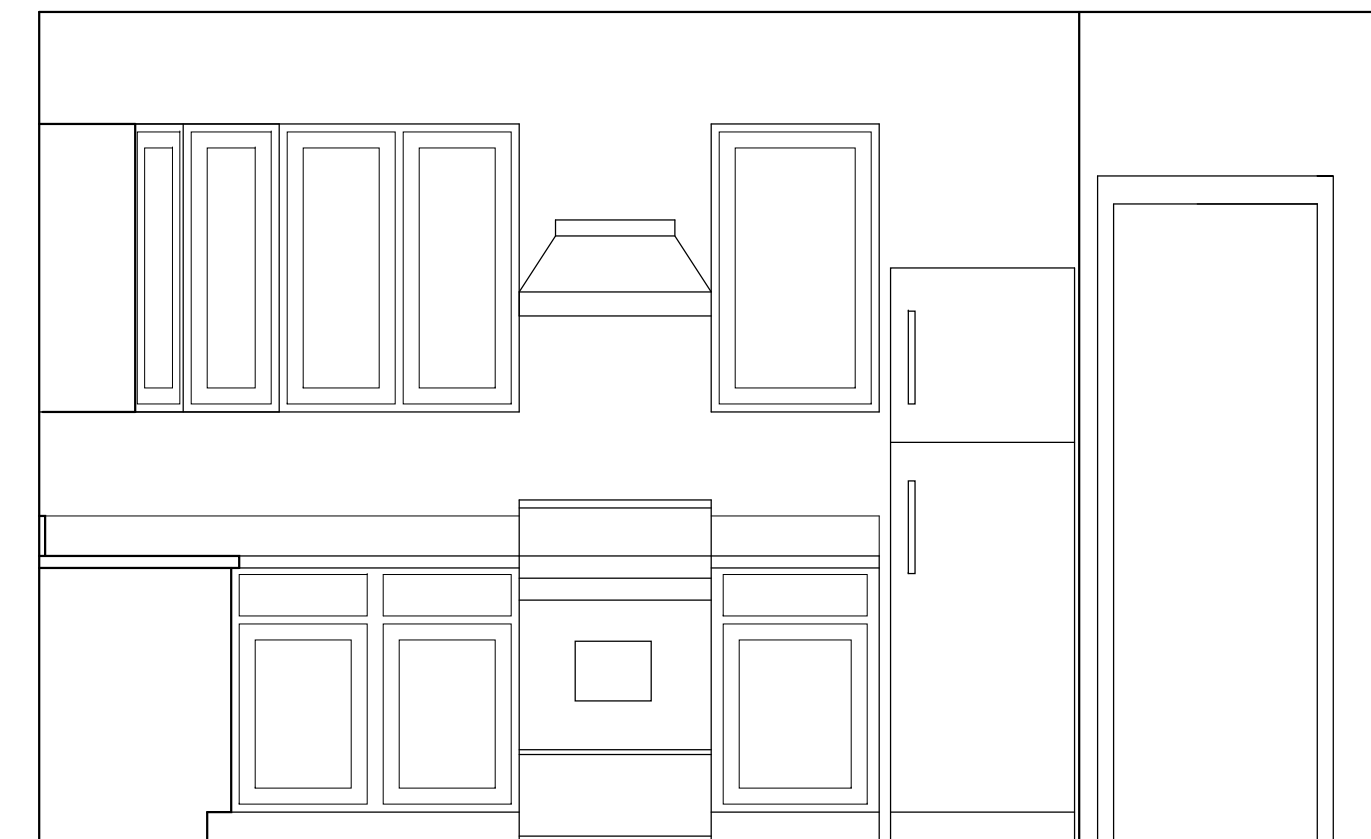
PLUMBING FIXTURE SCHEDULE

ITEM NO	QTY	FIXTURE	SPECIFICATIONS/COMMENTS	SUPPLIED BY:	INSTALLED BY:	NOTES
(A)	1	LAVATORY WALL MOUNTED - ADA	AMERICAN STD MODEL. MURRO UNIVERSAL DESIGN EVERCLEAN 0059.020EG SHROUD, V.C. 4" CENTER, COLOR WHITE. SYMMONS SYMMETRIX 9-20-2 SINGLE LEVER DECK MOUNTED LAVATORY FAUCET WITH POP UP DRAIN, CERAMIC CARTRIDGES, CHROME.	CONTRACTOR	CONTRACTOR	
(B)	1	FAUCET - ADA	---	CONTRACTOR	CONTRACTOR	
(C)	1	TOILET - TANK TYPE - ADA	AMERICAN STANDARD 2018.214 CHAMPION4 RIGHT HEIGHT ELONGATED FRONT BOWL, VC, RIM 16 1/2", COLOR WHITE, CHURCH 315566C HEAVY DUTY TOILET SEAT, CHROME SUPPLY WITH WHEEL HANDLE STOP AND ESCUTCHEON. HANDLE - OPEN SIDE FOR ADA OPERATION.	CONTRACTOR	CONTRACTOR	PROVIDE BLOCKING AS REQD.
(D)	2	PEDESTAL SINK	---	CONTRACTOR	CONTRACTOR	
(E)	2	FAUCET FOR PEDESTAL SINK	---	CONTRACTOR	CONTRACTOR	
(F)	2	BATH SINK	---	CONTRACTOR	CONTRACTOR	
(G)	2	BATH FAUCET	---	CONTRACTOR	CONTRACTOR	
(H)	2	BATH SINK	---	CONTRACTOR	CONTRACTOR	
(J)	2	BATH FAUCET	---	CONTRACTOR	CONTRACTOR	
(K)	2	3'x3' PRE-FAB SHOWER	---	CONTRACTOR	CONTRACTOR	
(L)	2	SHOWER VALVE, TRIM & DRAIN	---	CONTRACTOR	CONTRACTOR	
(M)	6	TUB	---	CONTRACTOR	CONTRACTOR	
(N)	6	SHOWER VALVE, TRIM & DRAIN	---	CONTRACTOR	CONTRACTOR	
(P)	8	TOILET - FLOOR MOUNTED	---	CONTRACTOR	CONTRACTOR	
(Q)	6	KITCHEN SINK	STD STAINLESS STEEL DEEP DOUBLE BOWL SELF RIMMING SINK FOR INSTALLATION WITH PLAM COUNTERTOP. SIZED FOR FIT IN A 36" WIDE SINK BASE.	CONTRACTOR	CONTRACTOR	
(R)	6	KITCHEN FAUCET	STD MOEN OR KOHLER MIDGRADE (ADA). SINGLE LEVER, SPRAYER TYPE FAUCET. BRUSHED STAINLESS FINISH	CONTRACTOR	CONTRACTOR	
(S)	6	HOT WATER HEATER	40 GAL.	CONTRACTOR	CONTRACTOR	
(T)	1	PAPER TOWEL DISPENSER/ TRASH RECEPTICAL	STD STAINLESS STEEL (ADA) WALL MOUNTED FLUSH	CONTRACTOR	CONTRACTOR	
(U)	1	TOILET PAPER DISPENSER	STD STAINLESS STEEL (ADA) WALL MOUNTED FLUSH	CONTRACTOR	CONTRACTOR	
(V)	1	42" GRAB BAR	STD STAINLESS STEEL (ADA) WALL MOUNTED	CONTRACTOR	CONTRACTOR	PROVIDE BLOCKING AS REQD.
(W)	1	36" GRAB BAR	STD STAINLESS STEEL (ADA) WALL MOUNTED	CONTRACTOR	CONTRACTOR	PROVIDE BLOCKING AS REQD.
(X)	8	6" TOWEL BAR	---	CONTRACTOR	CONTRACTOR	PROVIDE BLOCKING AS REQD.
(Y)	8	16" TOWEL BAR	---	CONTRACTOR	CONTRACTOR	PROVIDE BLOCKING AS REQD.
(Z)	8	36" TOWEL BAR	---	CONTRACTOR	CONTRACTOR	PROVIDE BLOCKING AS REQD.

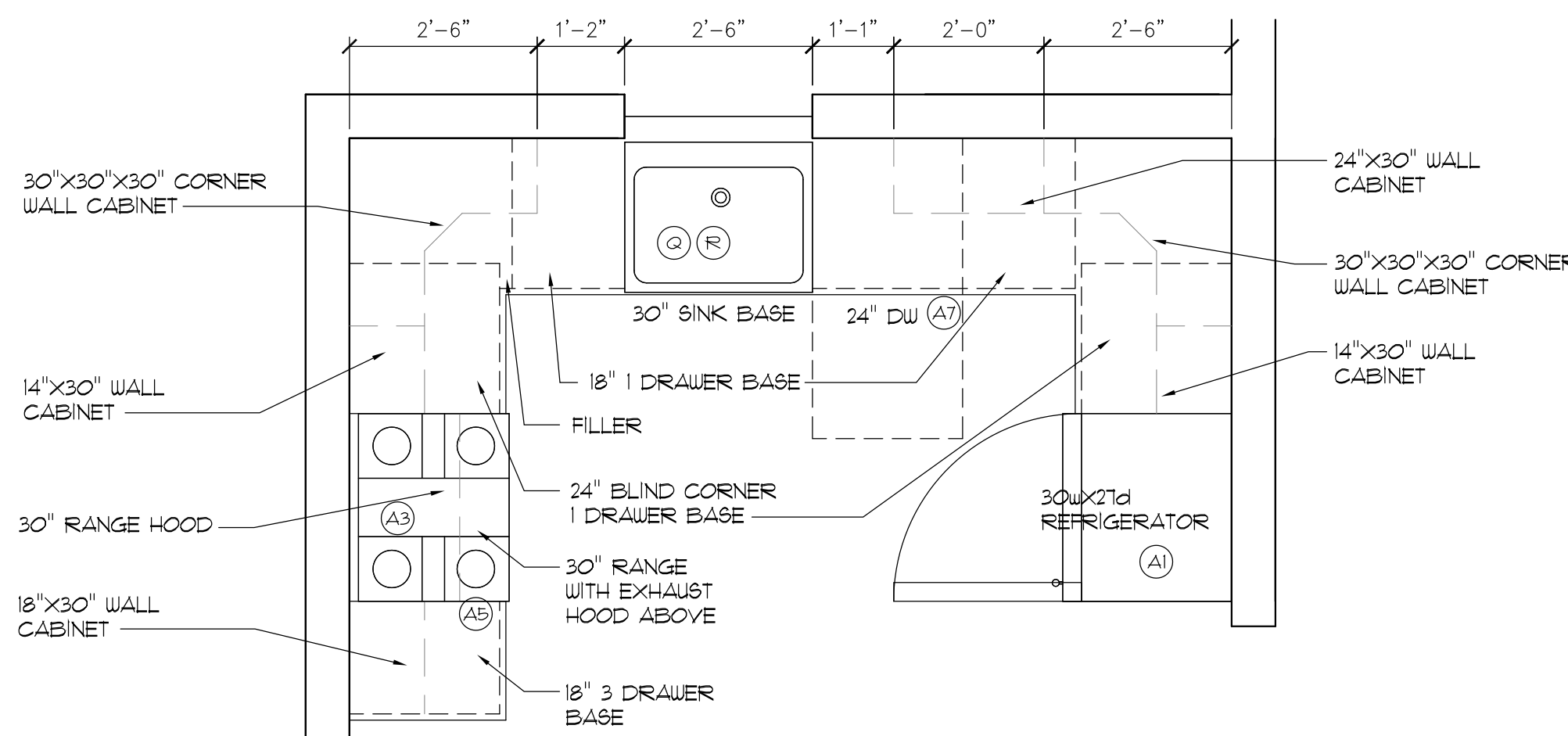
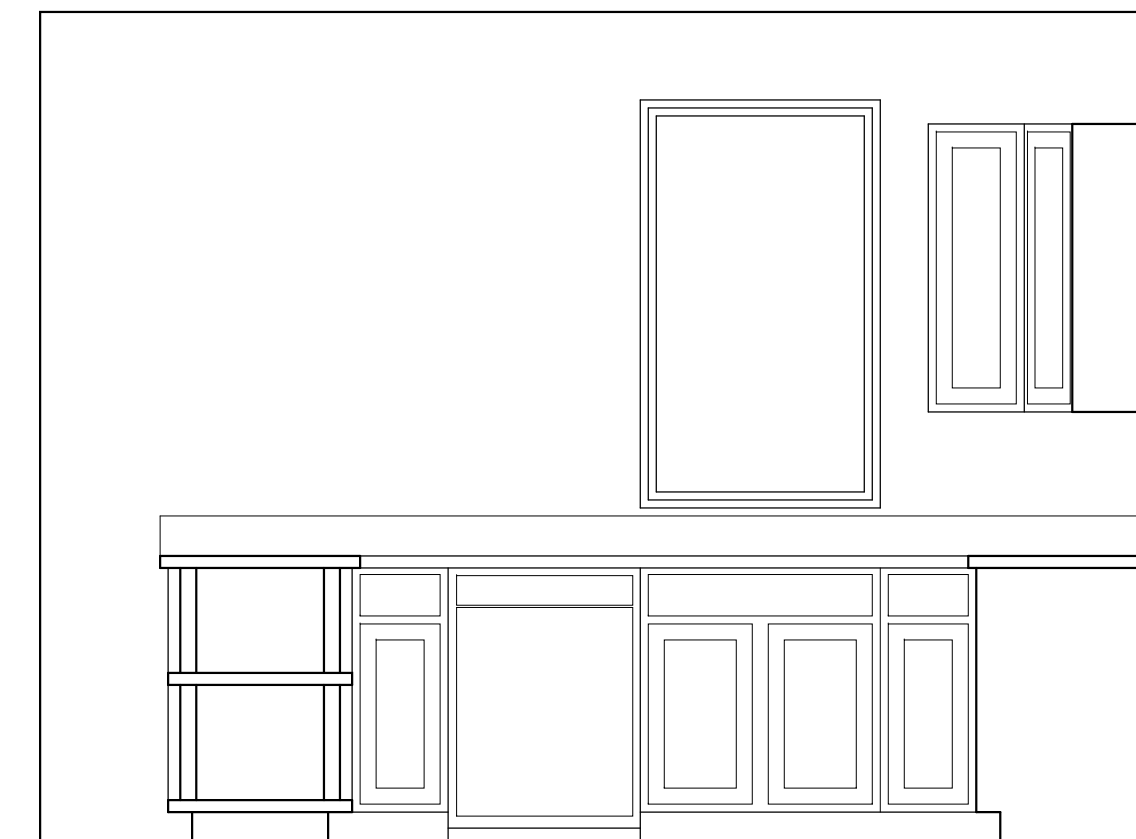
2 PLUMBING FIXTURE SCHEDULE



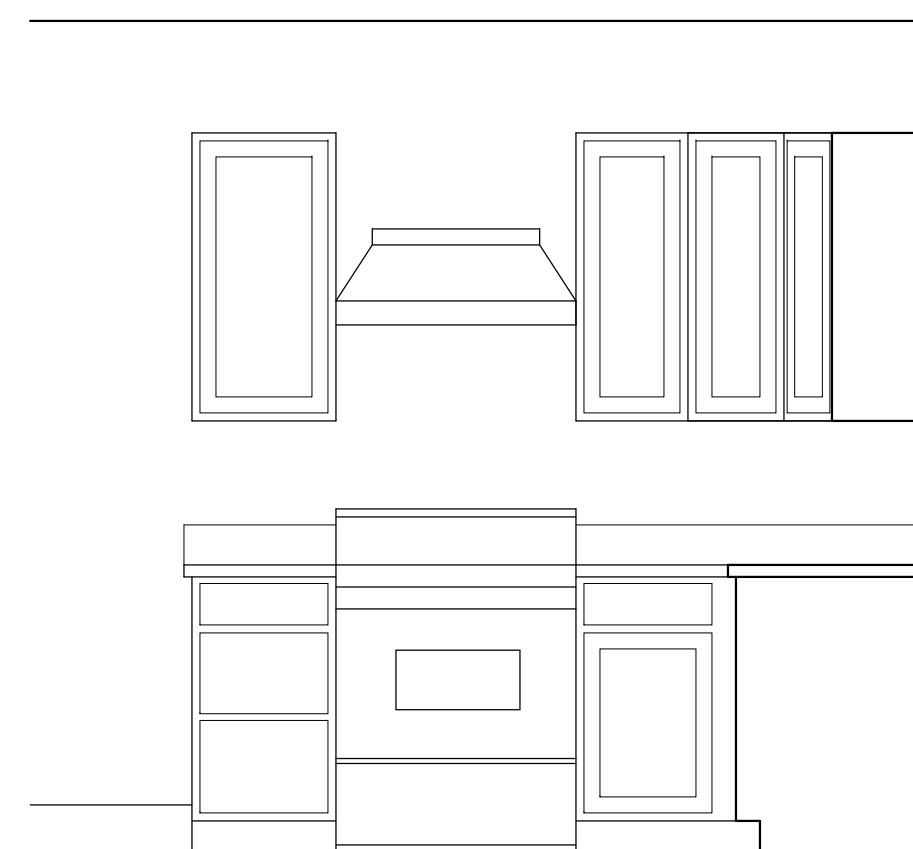
3 ENLARGED KITCHEN PLAN 220B & 330B (230C & 330C MIRRORRED)
SCALE = 1/2" = 1'-0"



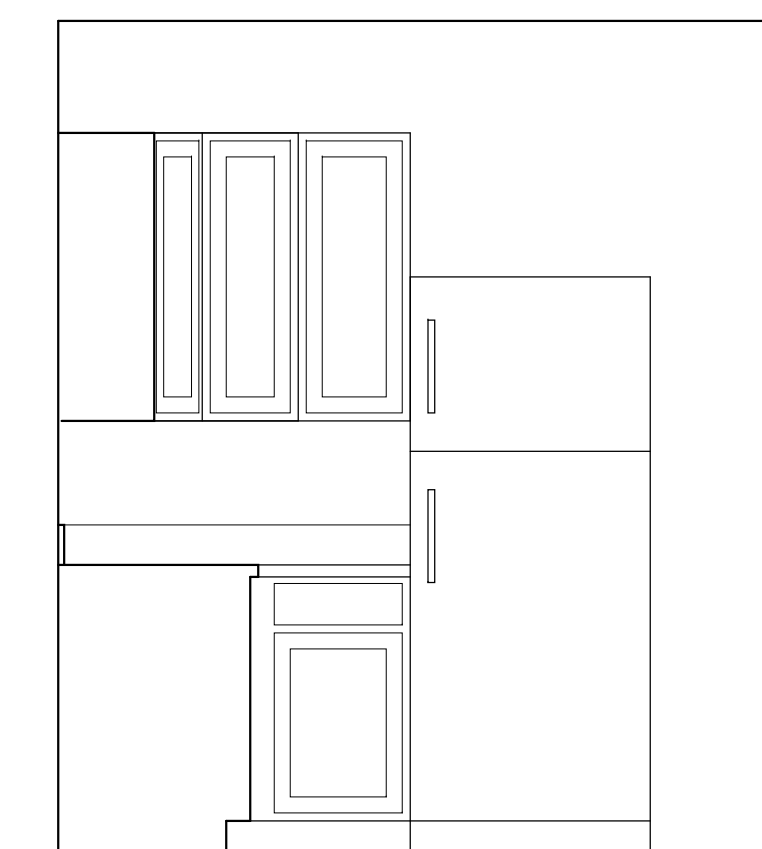
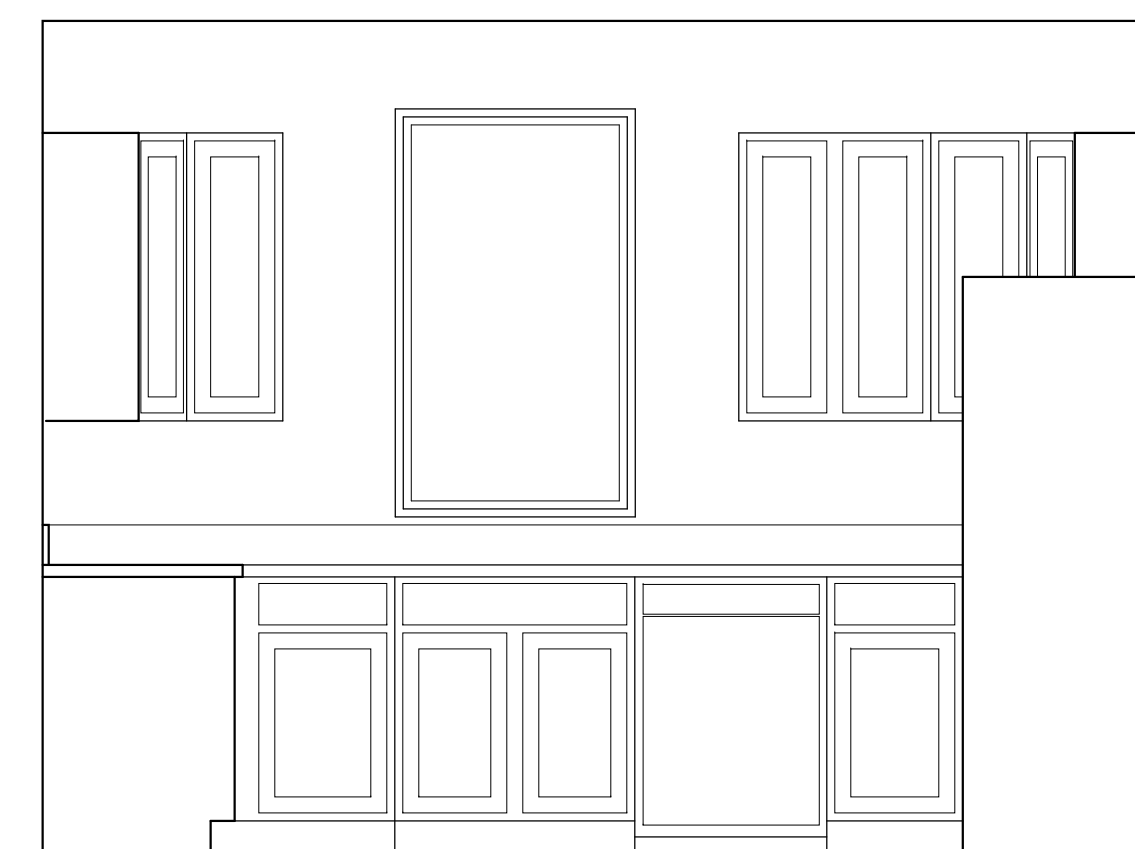
4 KITCHEN ELEVATION 220B & 330B (230C & 330C MIRRORRED)
SCALE = 1/2" = 1'-0"



5 ENLARGED KITCHEN PLAN 205A & 305A
SCALE = 1/2" = 1'-0"



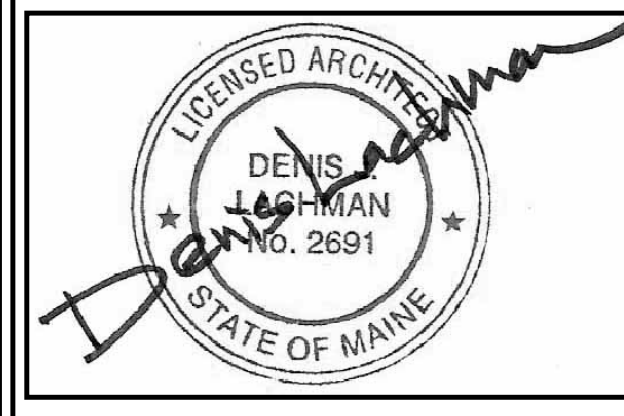
6 KITCHEN ELEVATIONS 205A & 305A
SCALE = 1/2" = 1'-0"



Lachman
Architects & Planners

Architecture
Community Design
Preservation

58 Fore St. Bldg 30
Portland, Maine 04101
207-831-8585



502 DEERING CENTER
NEW MIXED USE
502 STEVENS AVE, PORTLAND ME

FOR PERMIT
NOT FOR
CONSTRUCTION

TITLE:
**INTERIOR
ELEVATIONS**

REV	DATE	ISSUE
D		
C		
B		
A	05/15/2017	PERMIT

DRAWING NO:
A4.2