

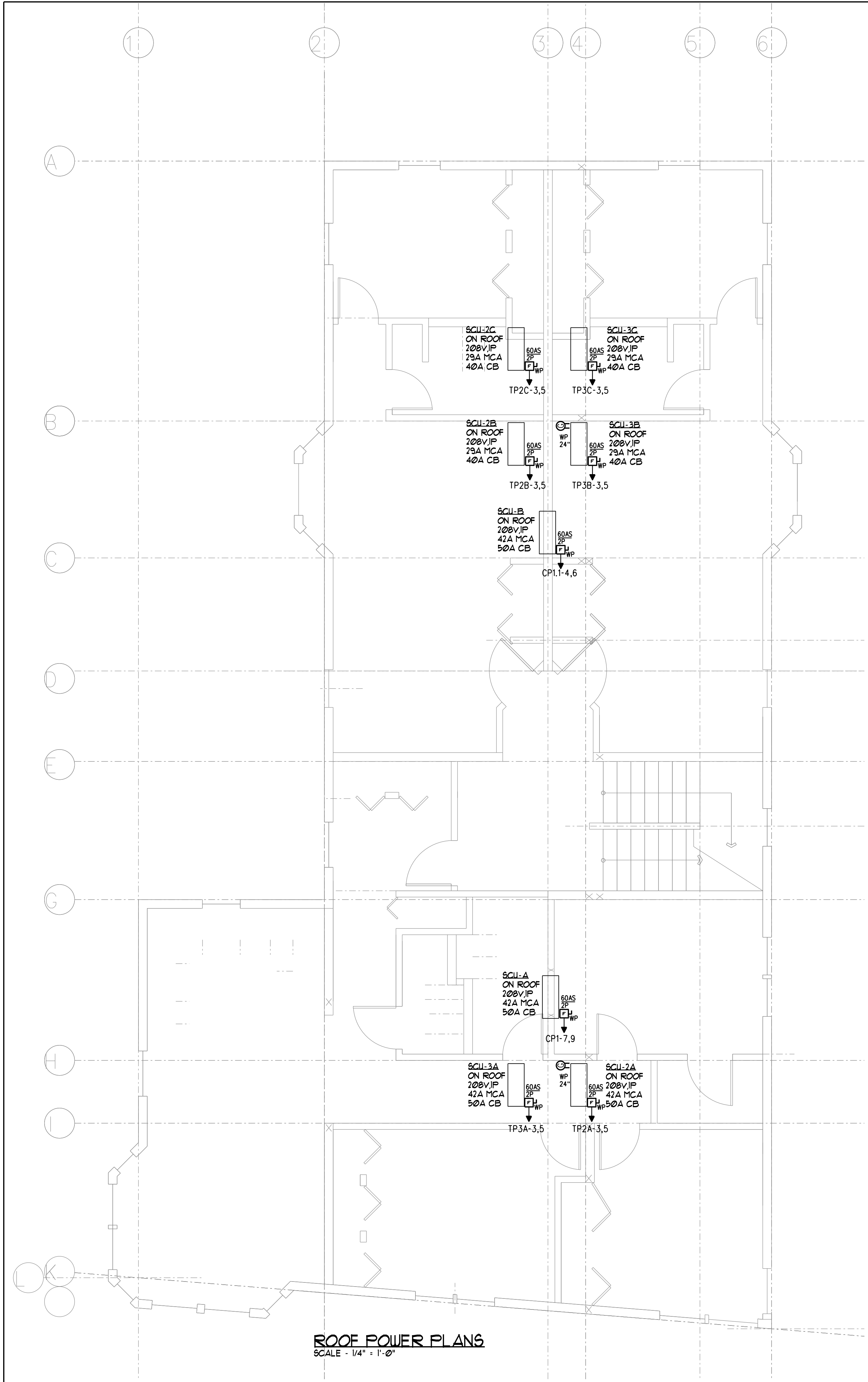
PANEL TP-2A (TYPICAL UNIT PANEL) 120/208 1PH 3W 150 AMP BUS - MLO 22K AIC NEMA TYPE 1 (RECESSED)

CKT #	LOAD DESCRIPTION	AT	P	CA	DF	DA	CKT #	LOAD DESCRIPTION	AF	P	CA	DF	DA
1	REFRIDGERATOR	20	1	14	1.00	14	2	RANGE	50	2	32	0.50	16
3	SCU-2A-LOCATED ON ROOF	50	2	42	1.00	42	4					0.50	0
5							6	DRYER	30	2	24	0.70	17
7	ELECTRIC WATER HEATER	30	2	24	1.00	24	8						0
9							10	KICKSPACE HEATER KITCHEN	20	1	14	1.00	14
11	KITCHEN COUNTER RECEPTACLES	20	1	14	1.00	14	12	EBB-ELECTRIC BASEBOARD HEAT	20	1	8	1.00	8
13	KITCHEN COUNTER RECEPTACLES	20	1	14	1.00	14	14	BEDROOM #1 RECEPTACLES	20	1	8	1.00	8
15	LIVING ROOM RECEPTACLES	20	1	8	0.50	4	16	BEDROOM #2 RECEPTACLES	20	1	8	0.50	4
17	GENERAL RECEPTACLES	20	1	8	0.50	4	18	BEDROOM #3 RECEPTACLES	20	1	8	0.50	4
19	WASHING MACHINE RECEPTACLE	20	1	10	0.80	8	20	UNIT LIGHTING	20	1	10	0.70	7
21	DISHWASHER	20	1	10	0.80	8	22	BATHROOM RECEPTACLES	20	1	10	0.50	5
23	SPARE	20	1			0	24	SPARE	20	1			0

AT - Amp Trip  
P - Poles  
A - Amps  
CA - Connected Amperes  
DF - Demand Factor (1 - .1)  
DA - Demand Amperes  
MLO - Main Lug Only  
MCB - Main Circuit Breaker

Total AmpsPH - Connected Load 130.88  
Demand Factor 88.82%  
Total AmpsPH - Demand 105.78  
Connected KVA 31.41  
Demand KVA 25.39  
Min. Panel Size (Demand x 1.25) - Amps 132.22

NOTES:  
1. PROVIDE ARC FAULT TYPE CIRCUIT BREAKERS IN ACCORDANCE WITH NEC 210.12  
2. PROVIDE TAMPER RESISTANT OUTLETS PER NEC 406.11 SECTION 210.52  
3. INSTALL PER ADA REQUIREMENTS IN ALL ADA UNITS.



**ROOF POWER PLANS**  
SCALE - 1/4" = 1'-0"

502 DEERING CENTER  
ROOF POWER PLANS

Date Drawn - 5-12-17  
Drawn By - PMC  
Revised -  
Project # -  
Scale - 1/4" = 1'-0"  
Sheet Number - E2.2