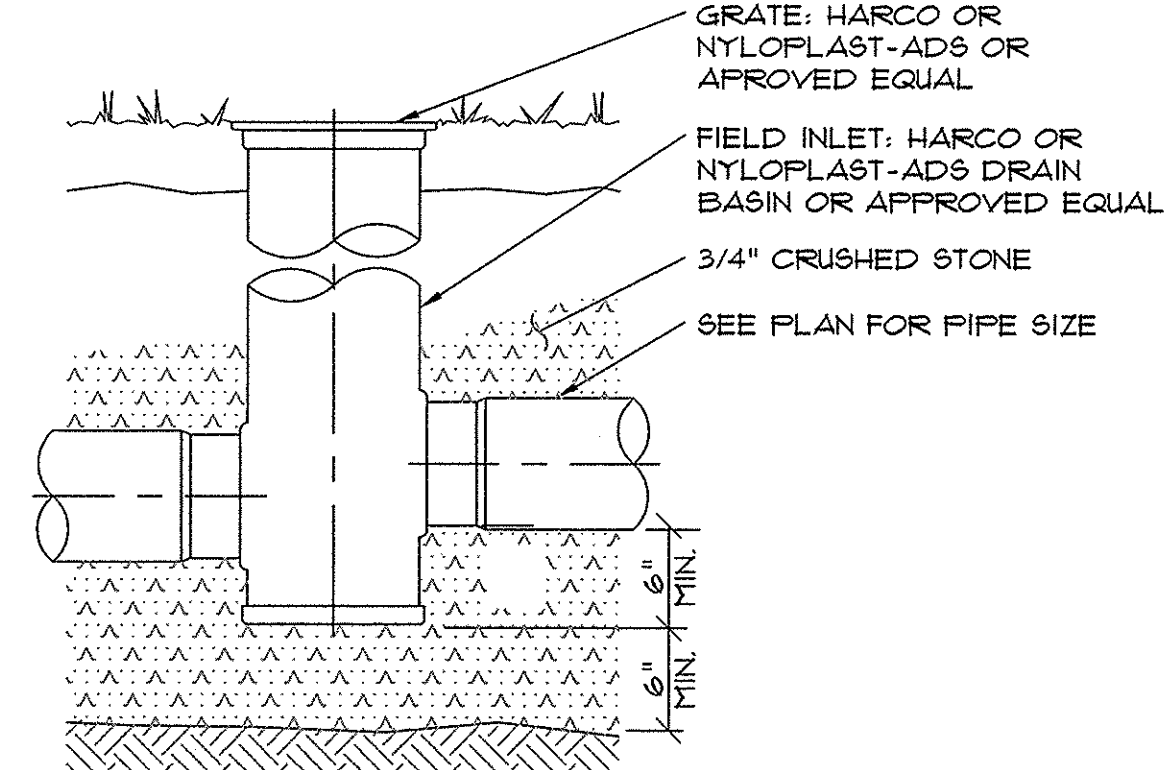
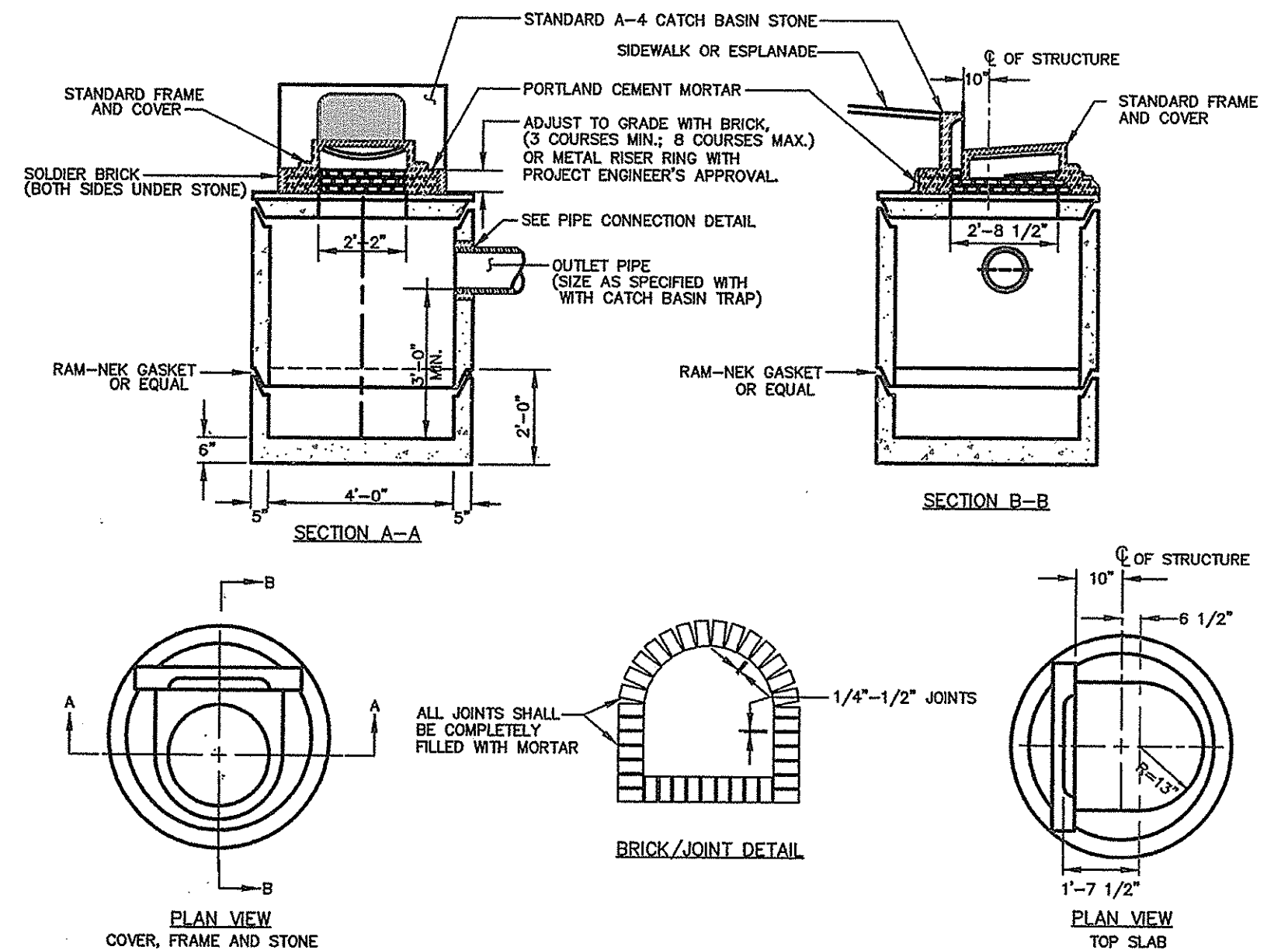


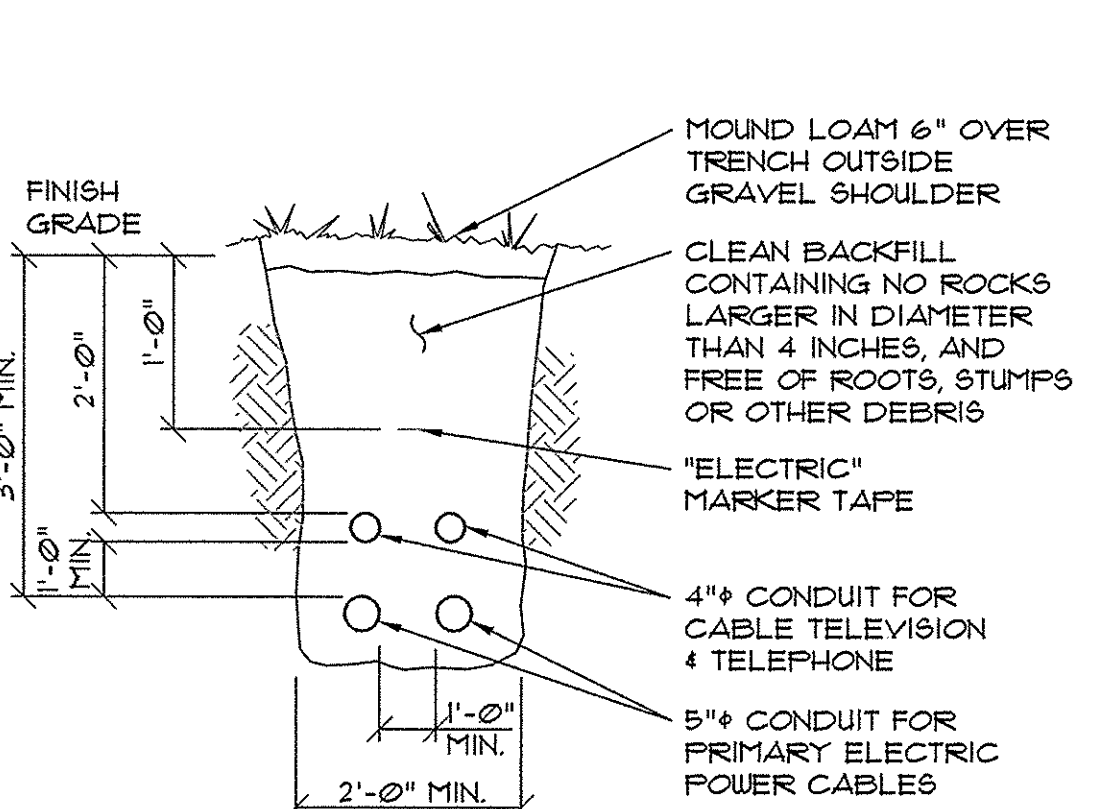
6 GAS PIPING TRENCH SECTION
NOT TO SCALE



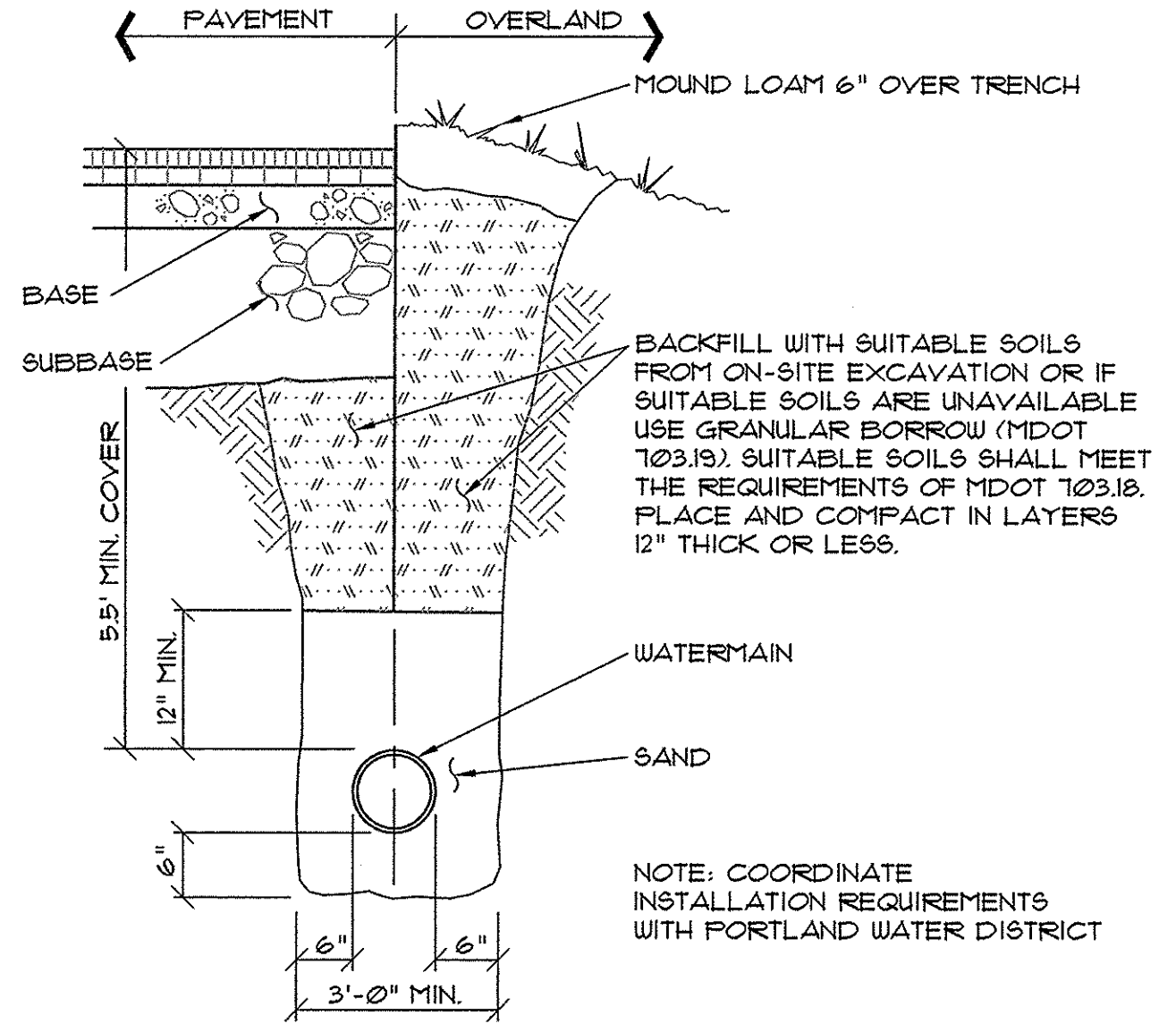
5 FIELD INLET DETAIL
NOT TO SCALE



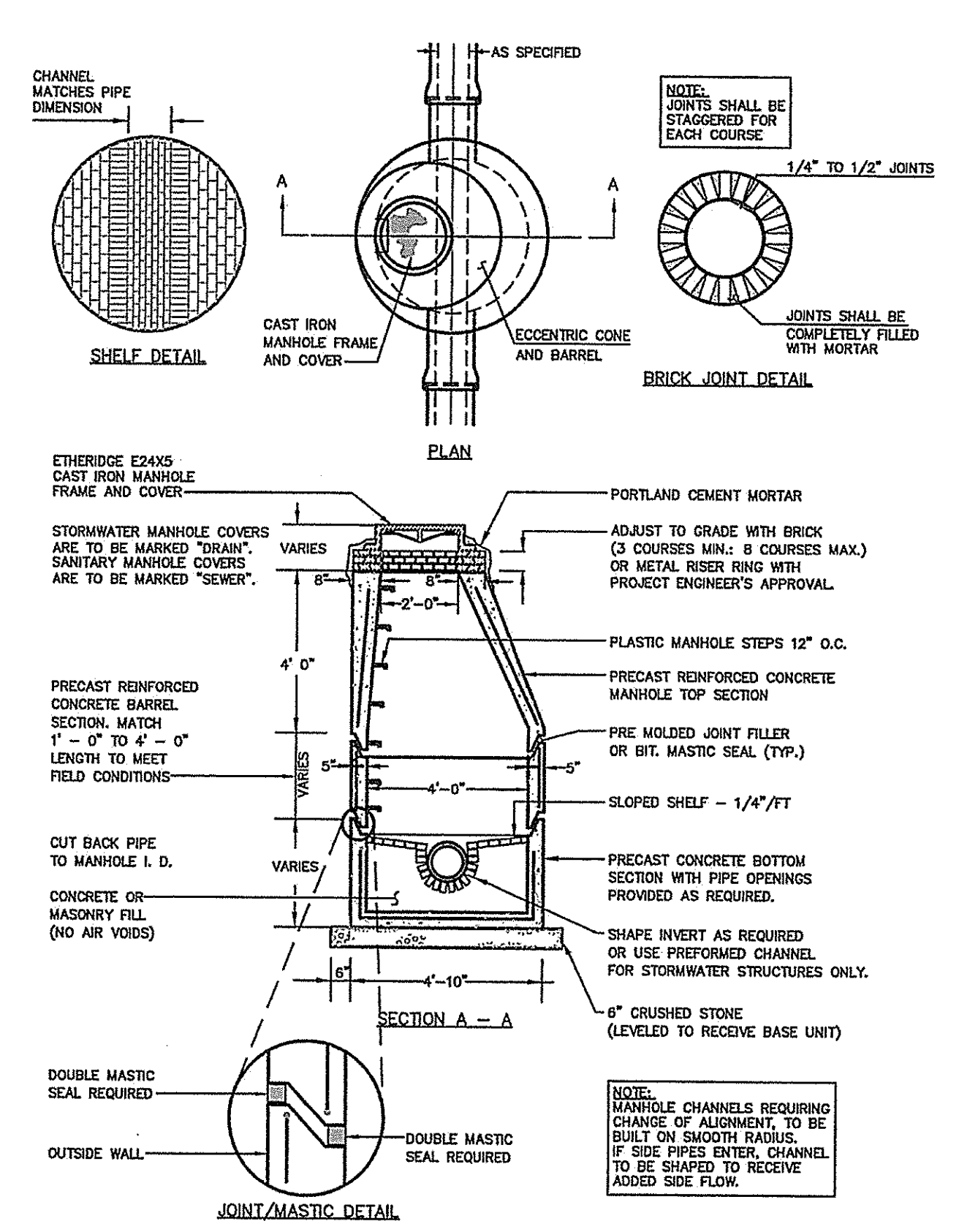
4 CATCHBASIN #1 SECTION (II-2)
NOT TO SCALE



9 CABLE TRENCH SECTION
NOT TO SCALE



8 TYPICAL WATER MAIN SECTION
NOT TO SCALE



7 PRECAST CONCRETE MANHOLE (II-1)
NOT TO SCALE

UNDERGROUND UTILITIES WARNING TAPE

IDENTIFICATION TAPE TO BE INSTALLED ABOVE ALL NEW UNDERGROUND UTILITIES AND ABOVE ANY EXISTING UTILITIES THAT MAY BE EXPOSED BY THIS CONSTRUCTION.

DETECTABLE UNDERGROUND MARKING TAPE TO BE PERMANENT, BRIGHT-COLORED, CONTINUOUS-PRINTED PLASTICIZED ALUMINUM TAPE, INTENDED FOR DIRECT-BURIAL. SERVICE NOT LESS THAN 3" WIDE x 5 MILS THICK. PROVIDE TAPE WITH BLACK PRINTING IDENTIFYING THE UTILITY. DETECTABLE WARNING TAPE REQUIRED OVER ALL WATER, SEWER, DRAINAGE, OR GAS UTILITIES. TAPE TO BE TERRA TAPE BY REEF INDUSTRIES, INC., www.reefindustries.com, OR EQUAL.

AUJIA UNIFORM COLOR CODE:

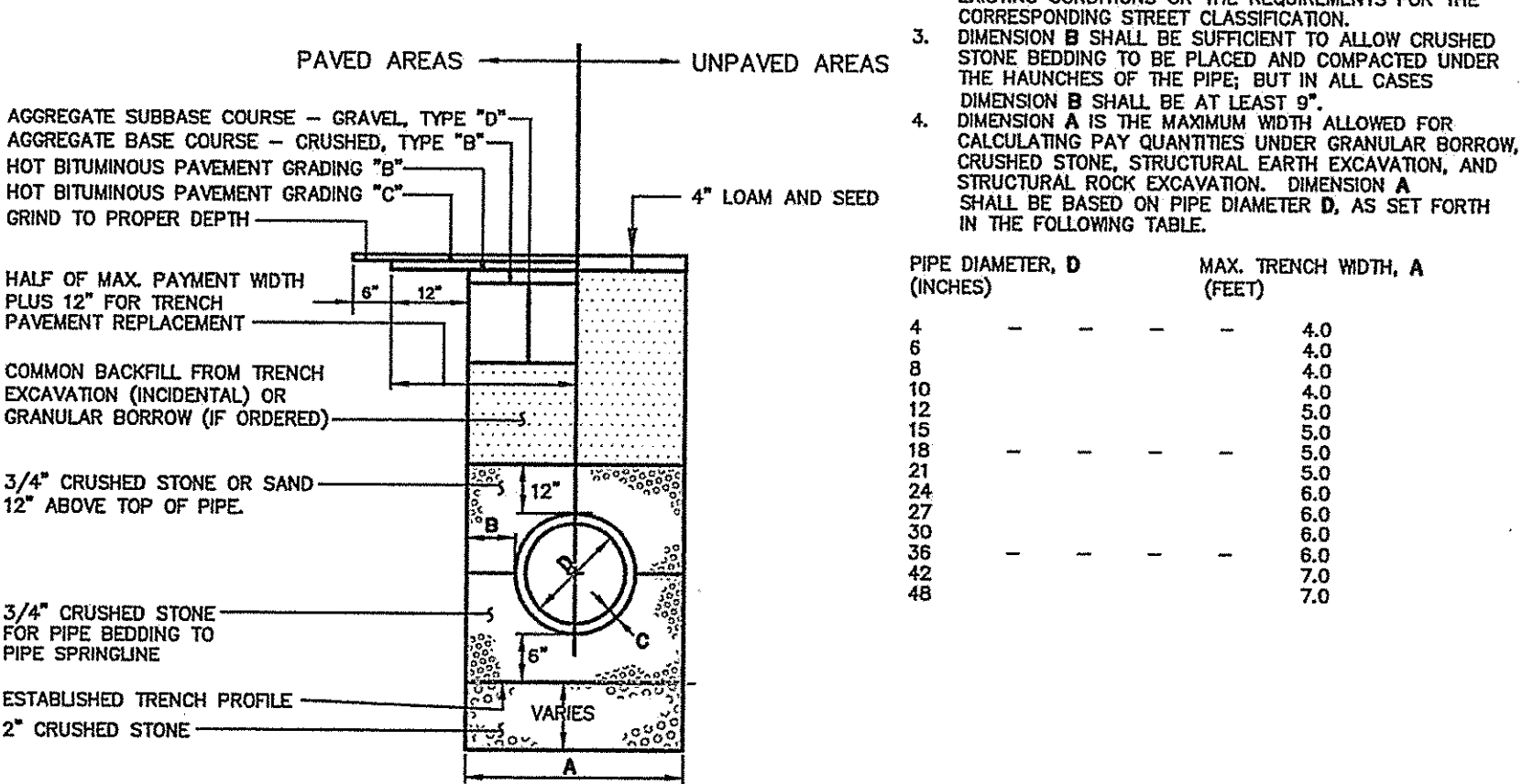
| | |
|--------|---|
| WHITE | PROPOSED EXCAVATION |
| PINK | TEMPORARY SURVEY MARKINGS |
| RED | ELECTRIC POWER LINES, CABLES, CONDUIT AND LIGHTING CABLES |
| YELLOW | GAS, OIL, STEAM, PETROLEUM OR GASEOUS MATERIALS |
| ORANGE | COMMUNICATION, ALARM OR SIGNAL LINES, CABLES OR CONDUIT |
| BLUE | POTABLE WATER |
| PURPLE | RECLAIMED WATER, IRRIGATION AND SLURRY LINES |
| GREEN | SEWERS AND DRAIN LINES |

GENERAL NOTES FOR MANHOLES AND CATCH BASINS

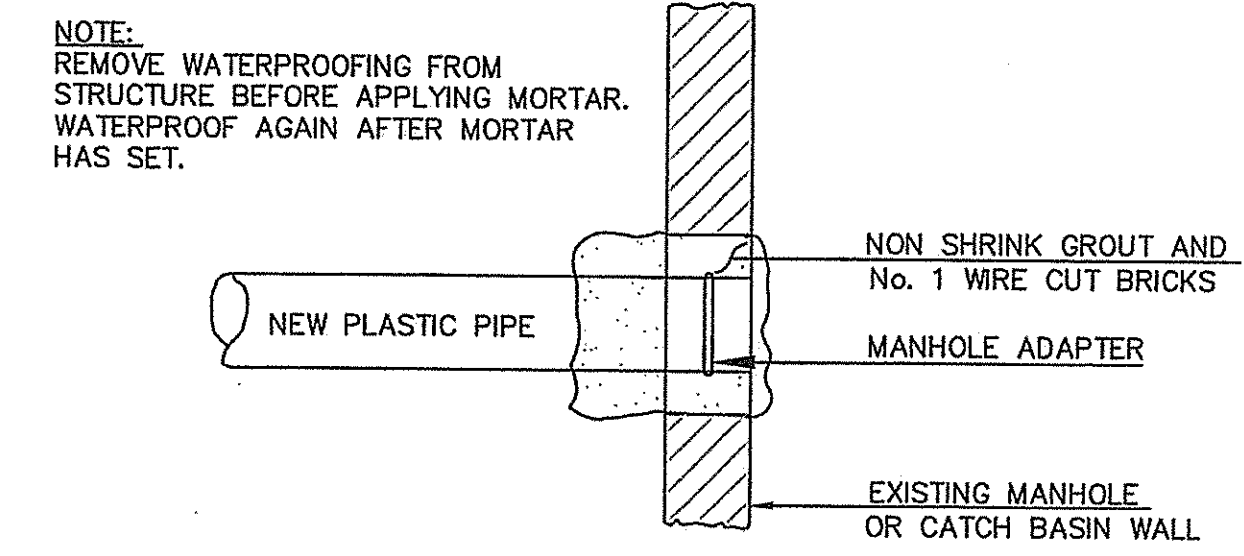
- ALL CONCRETE SHALL HAVE A MINIMUM ULTIMATE COMPRESSIVE STRENGTH OF 4000 LBS. PER SQ. INCH AT THE END OF 28 DAYS, UNLESS OTHERWISE NOTED.
- MANHOLES MAY BE CONSTRUCTED OF PRECAST REINFORCED CONCRETE, OR CAST IN PLACE.
- PRECAST REINFORCED CONE BARREL MANUFACTURED PER ASTM SPEC. C-476.
- ALL STORM AND SEWER MANHOLE COVERS SHALL BE SOLID AND SHALL HAVE ONE 7/8" DIAMETER DRILLED PICK HOLE LOCATED 8" FROM THE CENTER OF THE COVER.
- ALL SANITARY MANHOLE COVERS SHALL HAVE "SEWER" CAST INTO THE COVER. ALL STORMWATER/DRAIN MANHOLE COVERS SHALL HAVE "DRAIN" CAST INTO THE COVER.
- ALL MANHOLE RISERS SHALL BE ETHERIDGE 24" OR APPROVED EQUAL.
- SEWER BRICK SHALL CONFORM TO ASTM SPEC. DESIGNATE ON C-32-63, GRADE MA AND SA.
- ALL SANITARY MANHOLES SHALL HAVE A WATERPROOFING COATING APPLIED TO THE EXTERIOR SURFACE.
- CATCH BASIN FRAMES FOR TYPE A4 CATCH BASIN CURB INLETS SHALL BE ETHERIDGE DR5A OR APPROVED EQUAL.
- CASTINGS SHALL CONFORM TO ASTM DESIGNATION A48-CLASS 35.
- EXISTING MANHOLES, CATCH BASINS, FRAMES, AND COVERS SHALL BE SALVAGED BY THE CONTRACTOR, AND SHALL REMAIN THE PROPERTY OF THE CITY OF PORTLAND.
- ALL CATCH BASIN OUTLETS SHALL BE INSTALLED WITH A CASCO TRAP. SEE FIGURE II-09.

GENERAL NOTES FOR MANHOLES AND CATCH BASINS (II-4)

- NOTES:
- ALTERNATIVE CONSTRUCTION METHODS OR PAYMENT METHODS SHALL BE APPROVED IN ADVANCE BY THE CITY.
 - IN PAVED AREAS, DEPTHS OF GRAVEL AND HOT MIX ASPHALT PAVEMENT SHALL MATCH THE GREATER OF EXISTING CONDITIONS OR THE REQUIREMENTS FOR THE CORRESPONDING STREET CLASSIFICATION.
 - DIMENSION B SHALL BE SUFFICIENT TO ALLOW CRUSHED STONE BEDDING TO BE PLACED AND COMPACTED UNDER THE HAUNCHES OF THE PIPE, BUT IN ALL CASES DIMENSION B SHALL BE AT LEAST 9".
 - DIMENSION A IS THE MAXIMUM WIDTH ALLOWED FOR CALCULATING PAY QUANTITIES UNDER GRANULAR BORROW, CRUSHED STONE, STRUCTURAL EARTH EXCAVATION, AND STRUCTURAL ROCK EXCAVATION. DIMENSION A SHALL BE BASED ON PIPE DIAMETER D, AS SET FORTH IN THE FOLLOWING TABLE.



2 TYPICAL PIPE TRENCH INSTALLATION (11-12)
NOT TO SCALE



3 PLASTIC PIPE CONNECTION METHODS (II-14)
NOT TO SCALE

Project Name:
502 Deering Center
Portland, Maine

Owner / Applicant:
502 Deering Center, LLC
55 Hamblet Avenue
Portland, Maine 04103

Consultants:
Architect
Lachman Architects & Planners
58 Fore Street, Bldg 30
Portland, Maine 04101
207.831.8585
Contact: Denis Lachman

Landscape Architects
Carroll Associates
217 Commercial St.
Portland, Maine 04101
207.772.1552
Contact: Patrick Carroll

Civil Engineer
Pinkham & Greer Civil Engineers
28 Vannah Ave.
Portland, ME 04103
207.577.5840
Contact: Thomas Greer

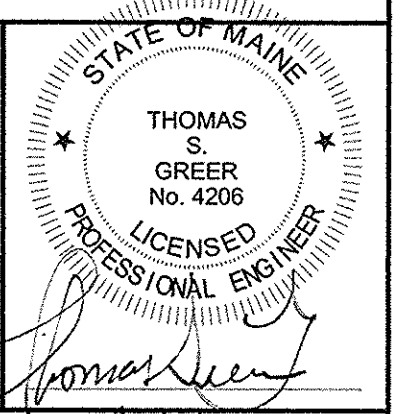
Surveyor
Four Points Associates, Inc.
9 Ralph Avenue
Lewiston, Maine 04240
207.577.5840
Contact: Donald Dostie

Drawing Set:

| No. | Date | Revision |
|-----|----------|-------------------------|
| 1 | 12-22-16 | SITE PLAN REVIEW-FINAL |
| 2 | 2-7-17 | REV'D PER CITY COMMENTS |
| 3 | 3-14-17 | REV'D PER CITY COMMENTS |
| 4 | 4-12-17 | FINAL CITY PLANS |
| 5 | 5-5-17 | FINAL CITY PLANS |

PERMITTING

Drawn: JDC
Checked: TSG
Approved: [Signature]
Drawing Title: 51317



CIVIL DETAILS

Job Number: PG: 16193
File:
Date: 12-22-2016 Scale: AS SHOWN
Drawing Number:

C 7.0
© 2017 CARROLL ASSOCIATES