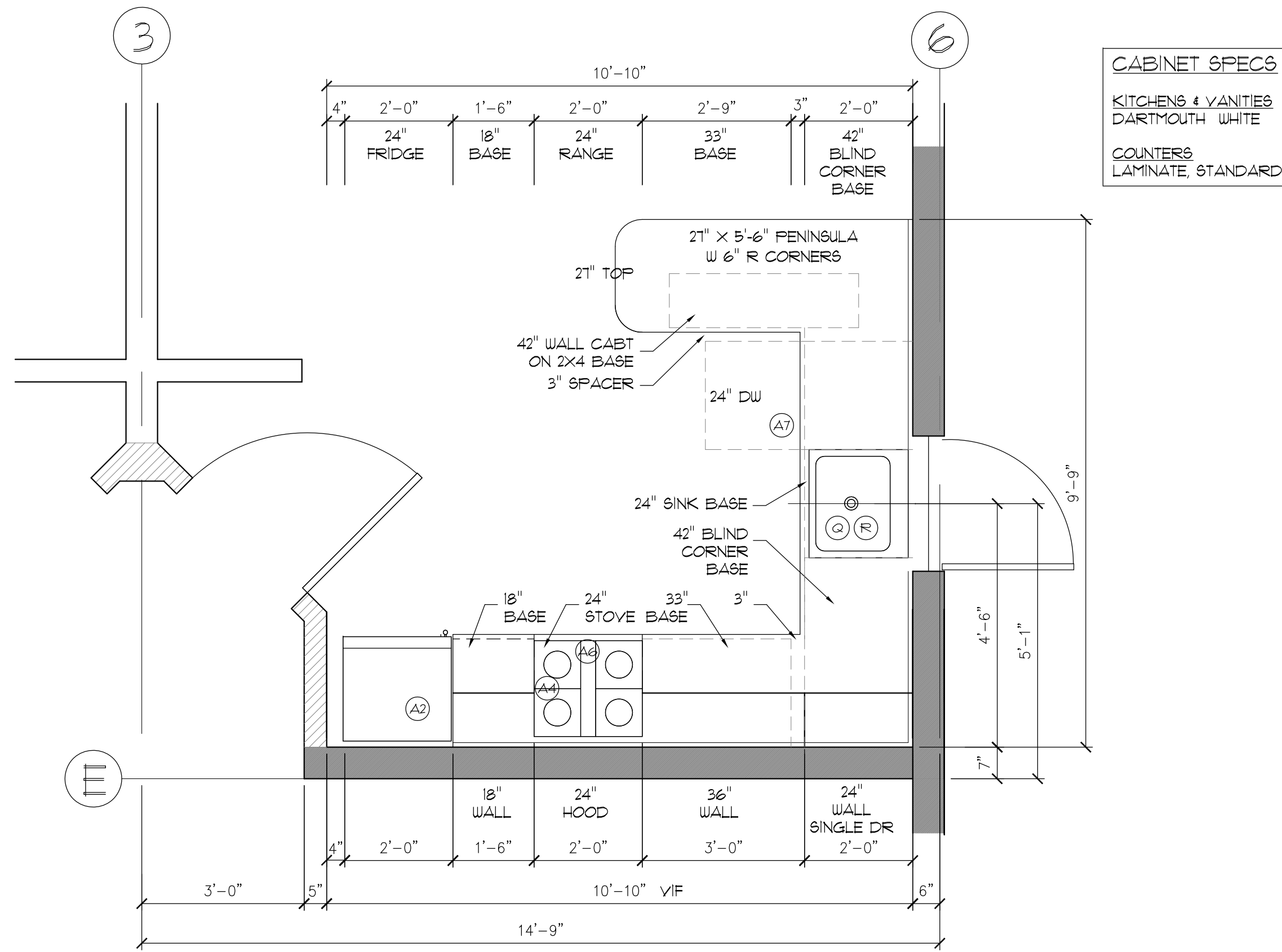


APPLIANCE & KITCHEN SCHEDULE

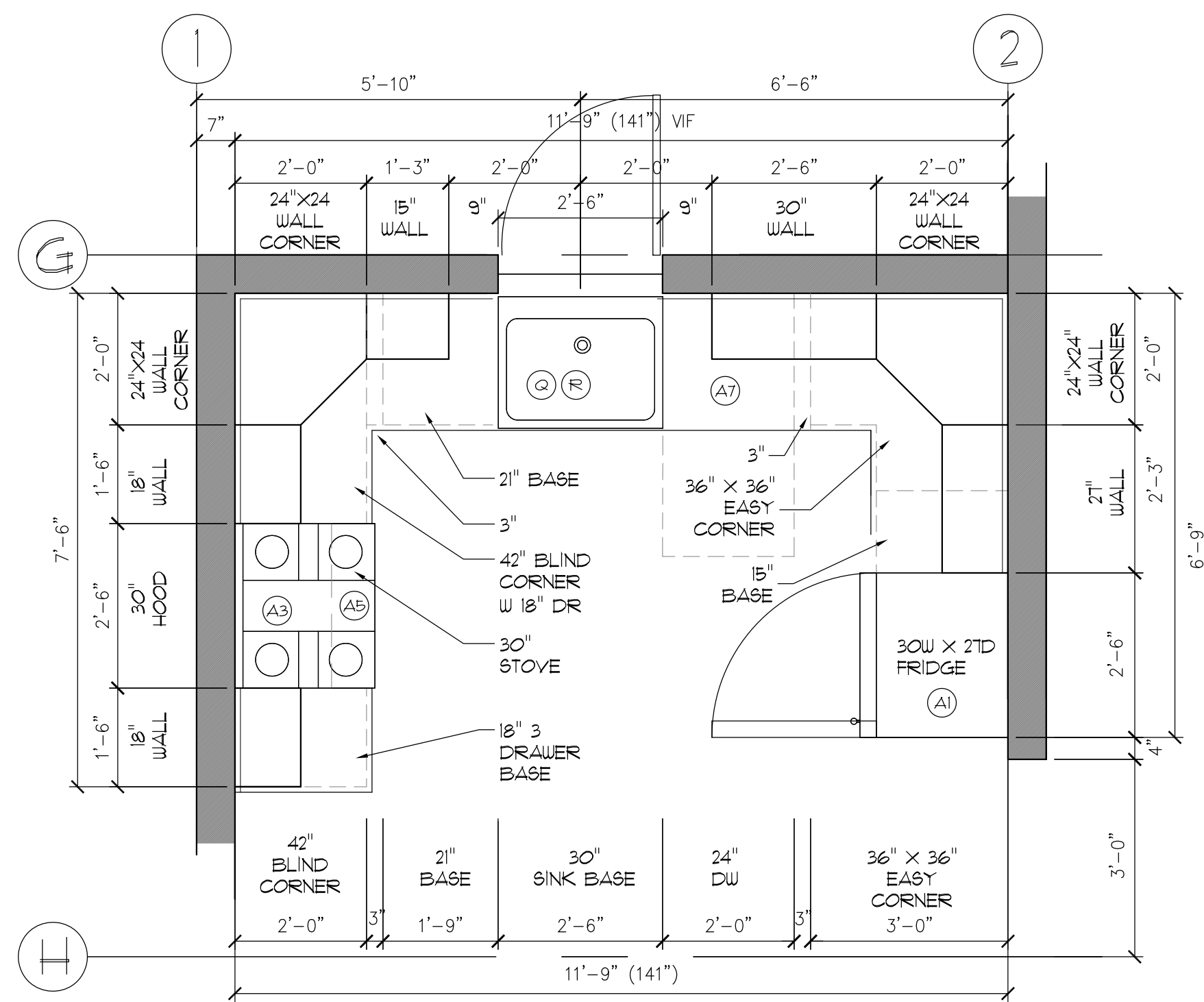
ITEM NO	QTY	APPLIANCE	SPECIFICATIONS/COMMENTS	205A/305A	220B/320B/230C/330C
(A1)		REFRIGERATOR	FRIGIDAIRE 30" FFHT182IQ W WHITE	(A1)	
(A2)		REFRIGERATOR	FRIGIDAIRE 24" FFET1022Q W WHITE		(A2)
(A3)		RANGE	FRIGIDAIRE 30" FFEP3015P W WHITE	(A3)	
(A4)		RANGE	PREMIER 24" ECK2400P - PEERLESS-PREMIER APPLIANCE CO. WHITE		(A4)
(A5)		RANGE HOOD	BROAN 40000 SERIES 30" (DUCTED) WHITE	(A5)	
(A6)		RANGE HOOD	BROAN 40000 SERIES 24" (DUCTED) WHITE		(A6)
(A7)		DISHWASHER	FRIGIDAIRE 24" FEP2410W111 WHITE	(A7)	(A7)

1 APPLIANCE & KITCHEN SCHEDULE



CABINET SPECS
 KITCHENS & VANITIES
 DARTMOUTH WHITE
 COUNTERTOPS
 LAMINATE, STANDARD

3 ENLARGED KITCHEN PLAN 220B & 330B (230C & 330C MIRROR)
 SCALE = 1/2" = 1'-0"



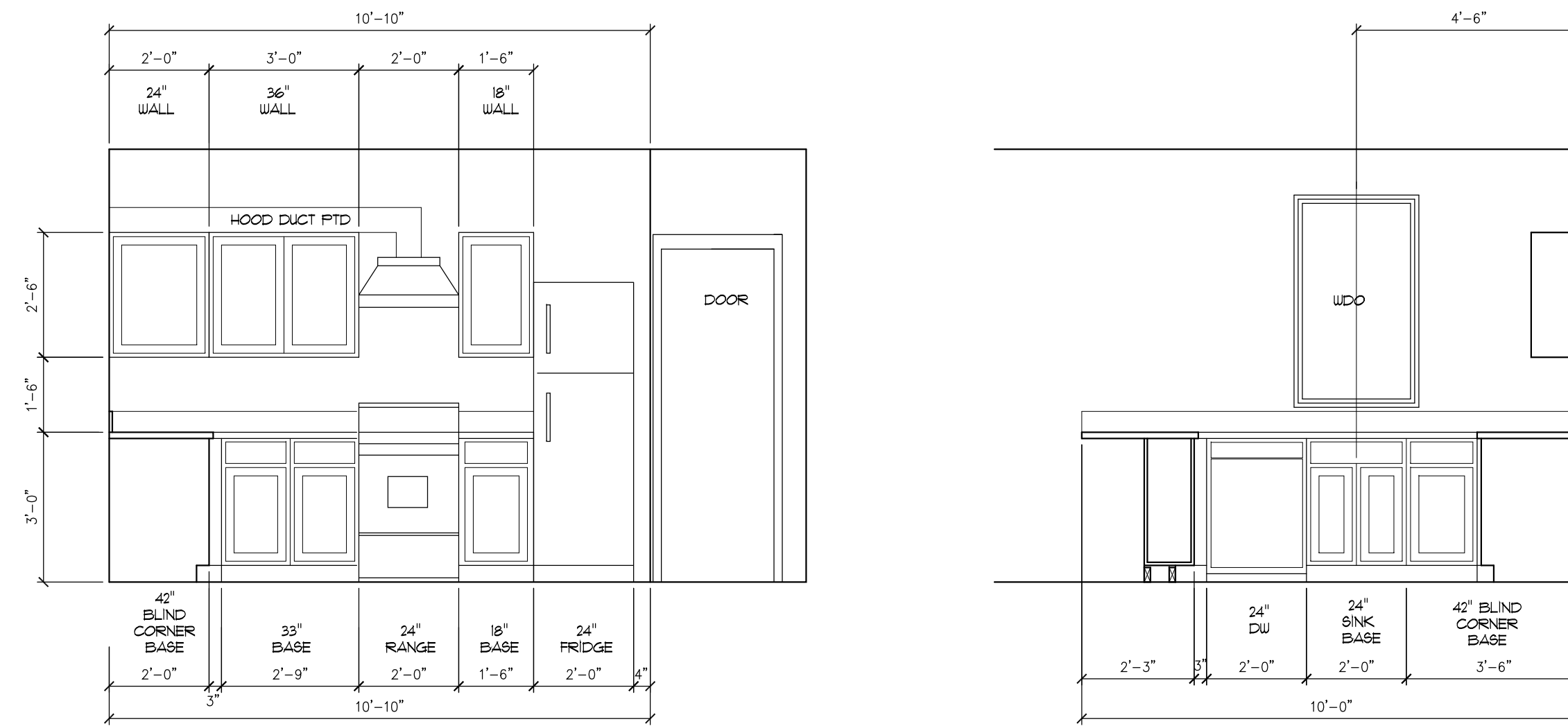
5 ENLARGED KITCHEN PLAN 205A & 305A
 SCALE = 1/2" = 1'-0"

PLUMBING FIXTURE & BATHROOM SCHEDULE

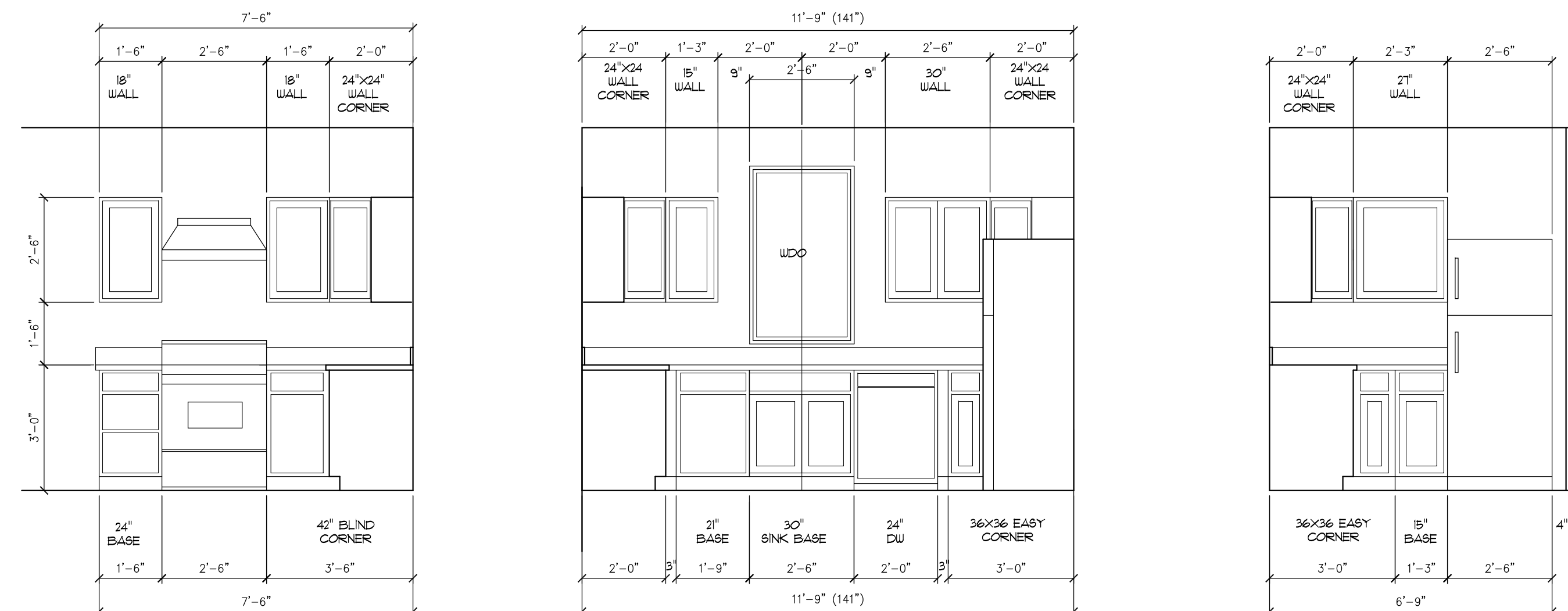
ITEM NO	QTY	FIXTURE	SPECIFICATIONS/COMMENTS	ADA 104/105	205A/305A	208A/308A	223B/333C
(A)		LAVATORY WALL MOUNTED - ADA	AMERICAN STD MODEL MURRO UNIVERSAL DESIGN EVERCLEAN 0059.020EC SHROUD, V.C., 4" CENTER, COLOR WHITE, SYMMONS SYMMETRIX 5-20-2 SINGLE LEVER DECK MOUNTED LAVATORY FAUCET WITH POP UP DRAIN, CERAMIC CARTRIDGES, CHROME.	(A)			
(B)		FAUCET - ADA	---	(B)			
(C)		TOILET - TANK TYPE - ADA	AMERICAN STANDARD 2018.214 CHAMPION4 RIGHT HEIGHT ELONGATED FRONT BOWL, VC, RIM 16 1/2", COLOR WHITE, CHURCH 315559C HEAVY DUTY TOILET SEAT, CHROME SUPPLY WITH WHEEL HANDLE STOP AND ESCUTCHEON, HANDLE & OPEN SIDE FOR ADA OPERATION.	(C)			
(D)		BATHROOM PEDESTAL SINK	SMALL 18W X 13D		(D)		
(E)		FAUCET FOR PEDESTAL SINK	---		(E)		
(F)		VANITY SINK	---			(F)	(F)
(G)		VANITY SINK FAUCET	---			(G)	(G)
(H)		RESERVED	---				
(J)		RESERVED	---				
(K)		3'X3' 1 PEICE SHOWER	---		(K)		
(L)		SHOWER VALVE, TRIM & DRAIN	---		(L)		
(H)		TUB	---			(H)	(H)
(N)		TUB VALVE, TRIM & DRAIN	---			(N)	(N)
(P)		TOILET - FLOOR MOUNTED	---	(P)	(P)	(P)	(P)
(Q)		KITCHEN SINK	STD STAINLESS STEEL SELF RIMMING SINK FOR INSTALLATION WITH FLAM COUNTERTOP, SIZED FOR FIT IN A 36" WIDE SINK BASE (205A/305A) OR 24" SINK BASE (220B/320B/230C/330C).				
(R)		KITCHEN FAUCET	STD MOEN OR KOHLER MIDGRADE (ADA), SINGLE LEVER, SPRAYER TYPE FAUCET, BRUSHED STAINLESS FINISH				
(S)		HOT WATER HEATER	40 GAL.				
(T)		PAPER TOWEL HOLDER	SURFACE MOUNT	(T)			
(U)		TOILET PAPER HOLDER	SURFACE MOUNT	(U)	(U)	(U)	(U)
(V)		42" GRAB BAR	STD STAINLESS STEEL (ADA) WALL MOUNTED	(V)			
(W)		36" GRAB BAR	STD STAINLESS STEEL (ADA) WALL MOUNTED	(W)			
(X)		18" TOWEL BAR	---		(X)		
(Y)		36" TOWEL BAR	---			(Y)	(Y)
(Z)		MIRROR	---	(Z) 21 X 30	(Z) 21 X 30	(Z) 30 X 30	(Z) 21 X 30

NOTE: PROVIDE BLOCKING FOR ALL FIXTURES & ACCESSORIES WHERE REQ'D

2 PLUMBING FIXTURE SCHEDULE



4 KITCHEN ELEVATION 220B & 330B (230C & 330C MIRROR)
 SCALE = 3/8" = 1'-0"



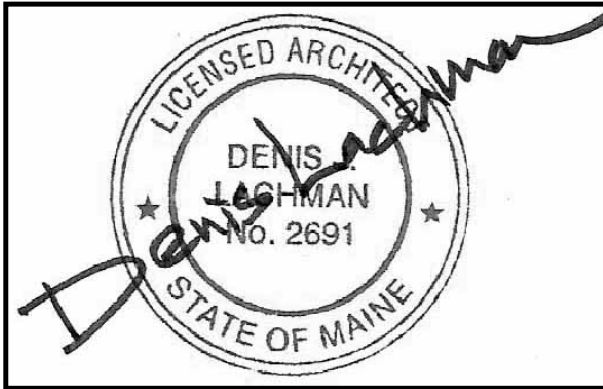
6 KITCHEN ELEVATIONS
 205A & 305A
 SCALE = 3/8" = 1'-0"

Lachman

Architects & Planners

Architecture
 Community Design
 Preservation

58 Fore St. Bldg 30
 Portland, Maine 04101
 207-831-8585



502 DEERING CENTER
 NEW MIXED USE

502 STEVENS AVE, PORTLAND ME

TITLE: KITCHENS,
 APPLIANCES
 & FIXTURES

REV	DATE	ISSUE
D		
C	07/10 2017	PLAN REVIEW REVISIONS
B	07/16 2017	CONSTRUCTION
A	06/19 2017	CONSTRUCTION

DRAWING NO:

A4.2