

502 DEERING CENTER

NEW MIXED USE

502 STEVENS AVE, PORTLAND, ME

TITLE:

ELEVATIONS

REV	DATE	ISSUE
D		
C	07/10 2017	PLAN REVIEW REVISIONS
B	07/16 2017	CONSTRUCTION
A	06/19 2017	CONSTRUCTION

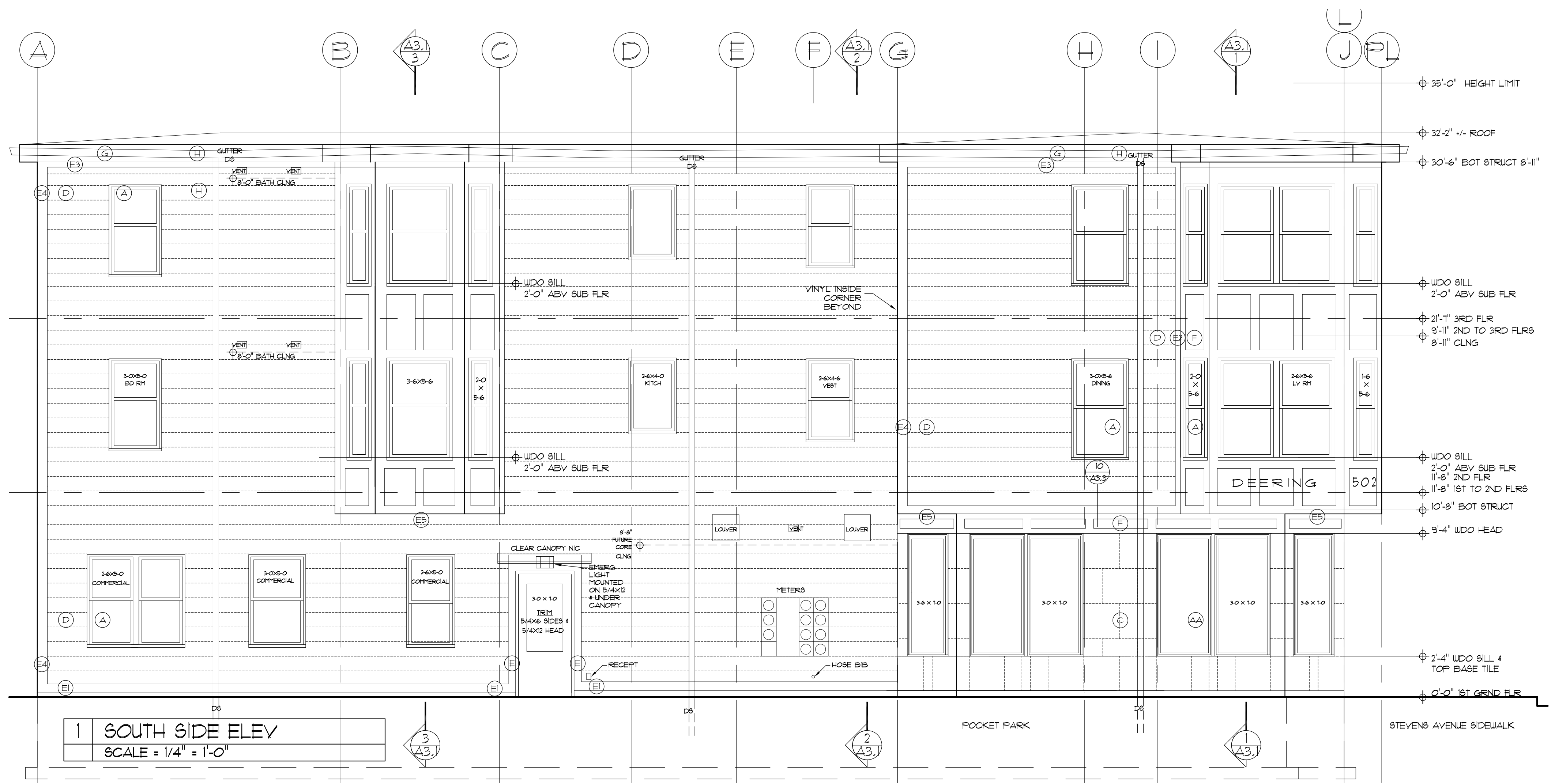
DRAWING NO:

A2.2

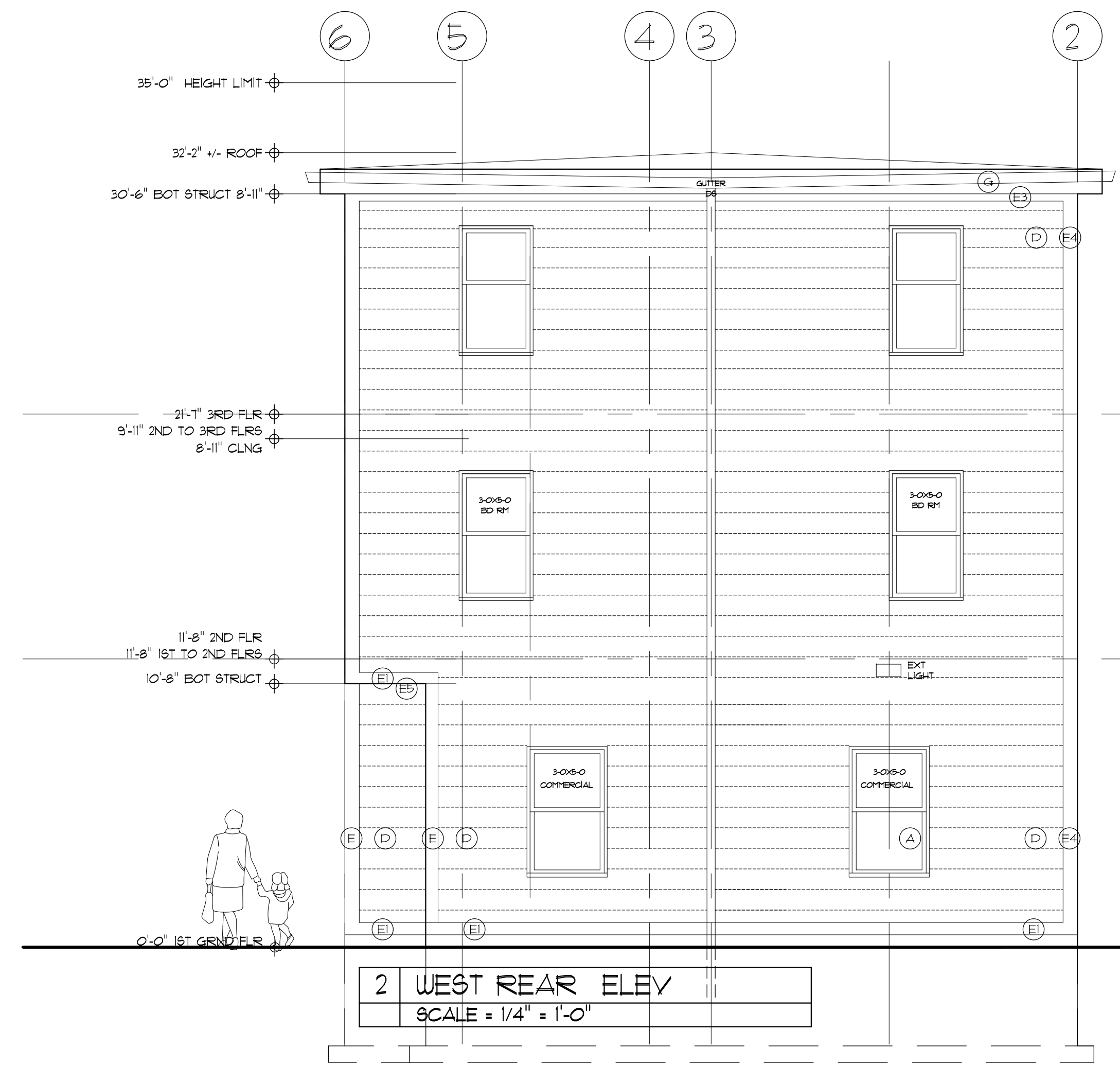
EXTERIOR MATERIAL SPECIFICATION/COLOR KEY

TAG	ITEM	SPEC/MATERIAL	COLOR VALUE	COLOR
(A)	WINDOWS	VNLT SEE UD06 A4.1	DARK	STANDARD BLACK
(AA)	WINDOWS	ALUM CLAD SEE UD06 A6.1	DARK	STANDARD BLACK
(B)	STOREFRONT SYSTEM	ALUM1 SEE 3/A6.2	MED/DARK	STANDARD (MED RED OR BLUE) NOTE: SPANDREL PANELS SAME COLOR APPLIED 3/4" PVC FTD TO MATCH NOTE: SIDE RESIDENTIAL ENTRY 106/106/2 HAS PVC TRIM FTD TO MATCH
(C)	TILE	PORCELAIN, 24" X 24, SCHUTER - KERDI BOARD - 5/16" THICK FASTENED TO STRUCTURAL FLYWOOD. SCHUTER - KERDI BAND WATERPROOFING FABRIC FOR ALL BEAMS, SCHUTER HOLDINGS FOR ALL CORNERS AND CAPS WHERE PORCELAIN ENDS WITHOUT PROTECTION. FRODOA OR ARDEX - FREEZE THAW SAFE ANTI SAG, AND VERTICALLY APPROVED MORTAR ADHESIVE FOR TILE INSTALLATION. ARDEX EPOXY GROUT.		
(D)	VINYL SIDING	CERTANTEED RESORATION CLASSIC #3619, DOUBLE 4.5", SMOOTH, .044 THICK, 5/8" PROJECTION		STANDARD T&D (LIGHT)
	INTERIOR CORNERS	3/4" INSIDE CORNER POST #3436, MATTE		COLONIAL WHITE
(E)	PVC VERT1 HORZ TRIM	PVC (AZEK)	LIGHT	INTEGRAL WHITE, NO PAINT
(E1)	HORZ SKIRTEBOARD SIDING STARTER	5/4X6 UNIVERSAL SKIRT W INTEGRAL FLASHING		
(E2)	VERT BAY TRIM TO SIDING TRANSITION	5/4 X 6 RABBETED TO RECEIVE 5/8" SIDING		
(E3)	HORZ SIDING TO FRIEZE BOARD	5/4 X 6 RABBETED TO RECEIVE 5/8" SIDING		
(E4)	VERT OUTSIDE CORNERBDS (# 2'A, 6'A, 1'G)	5/4 X 6 RABBETED TO RECEIVE 5/8" SIDING		
(E5)	SOFFITT # BAYS	1/2" X 1/2" BEADBOARD (SEE A3.2)		
(F)	PVC PANEL SYSTEM # BAYS # DATUM	RAILS # STILES - 1X PANELS - 3/8" SHEET	LIGHT	INTEGRAL WHITE, NO PAINT
(G)	FASCIA, SOFFITT # FRIEZE	SHEET ALUM. 20 GA (CONFRM)		STANDARD WHITE
(H)	GUTTERS	SEAMLESS ALUM GUTTERS, 20 GA? (CONFRM GA # SIZE)		STANDARD WHITE
(I)	DOWNSPOUTS	ALUM HEAVY GA (?) TO WITHSTAND 1ST FLR DAMAGE # FREEZING, CONFRM SIZE		
(J)	FIBERGLASS DOOR	STANDARD RESIDENTIAL EXT DOOR W JAMB BOTTOMS PROTECTED FM MOISTURE		PTD COLOR T&D
	ROOF	STANDARD MEMBRANE .0601 OVER TAPERED INSUL BOARD, COLOR (T&D)		
	ROOF HATCH	THERMALLY BROKEN, ALUM, INSULATED COVER # CURB, 30X54, BILCO NB50-TB		

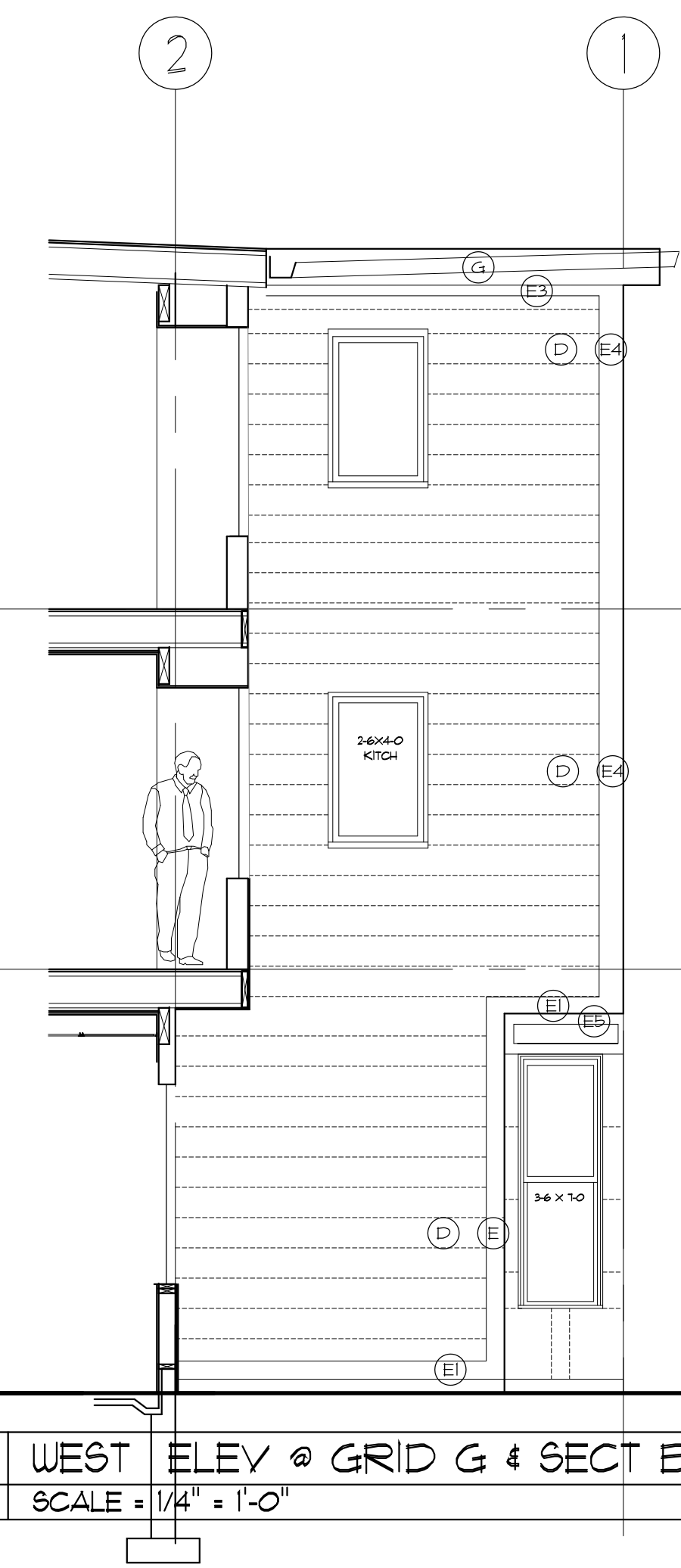
4 MATERIAL & COLOR KEY
SCALE = NONE



1 SOUTH SIDE ELEV
SCALE = 1/4" = 1'-0"



2 WEST REAR ELEV
SCALE = 1/4" = 1'-0"



3 WEST ELEV @ GRID G & SECT BTWN GRID B & C
SCALE = 1/4" = 1'-0"