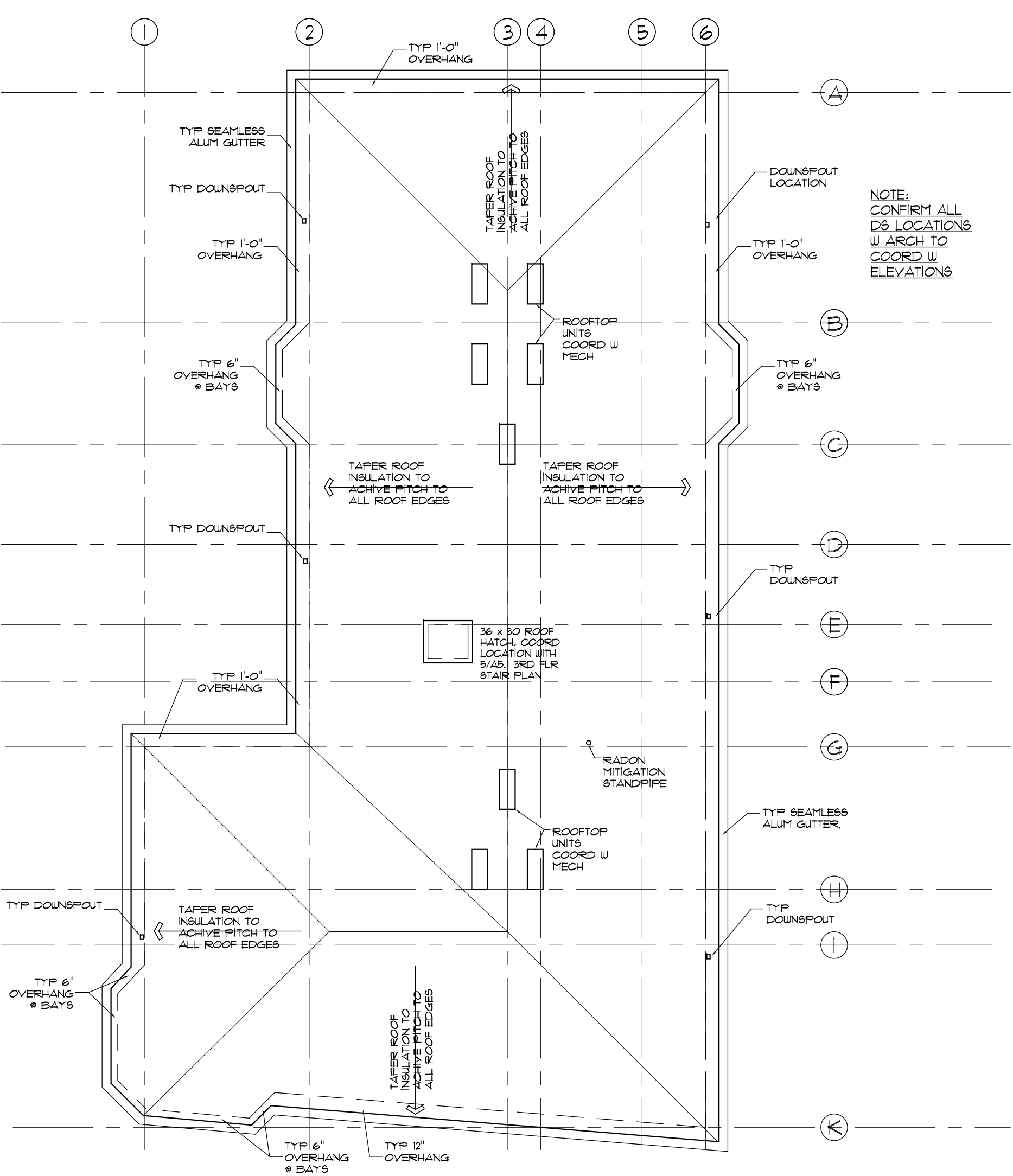


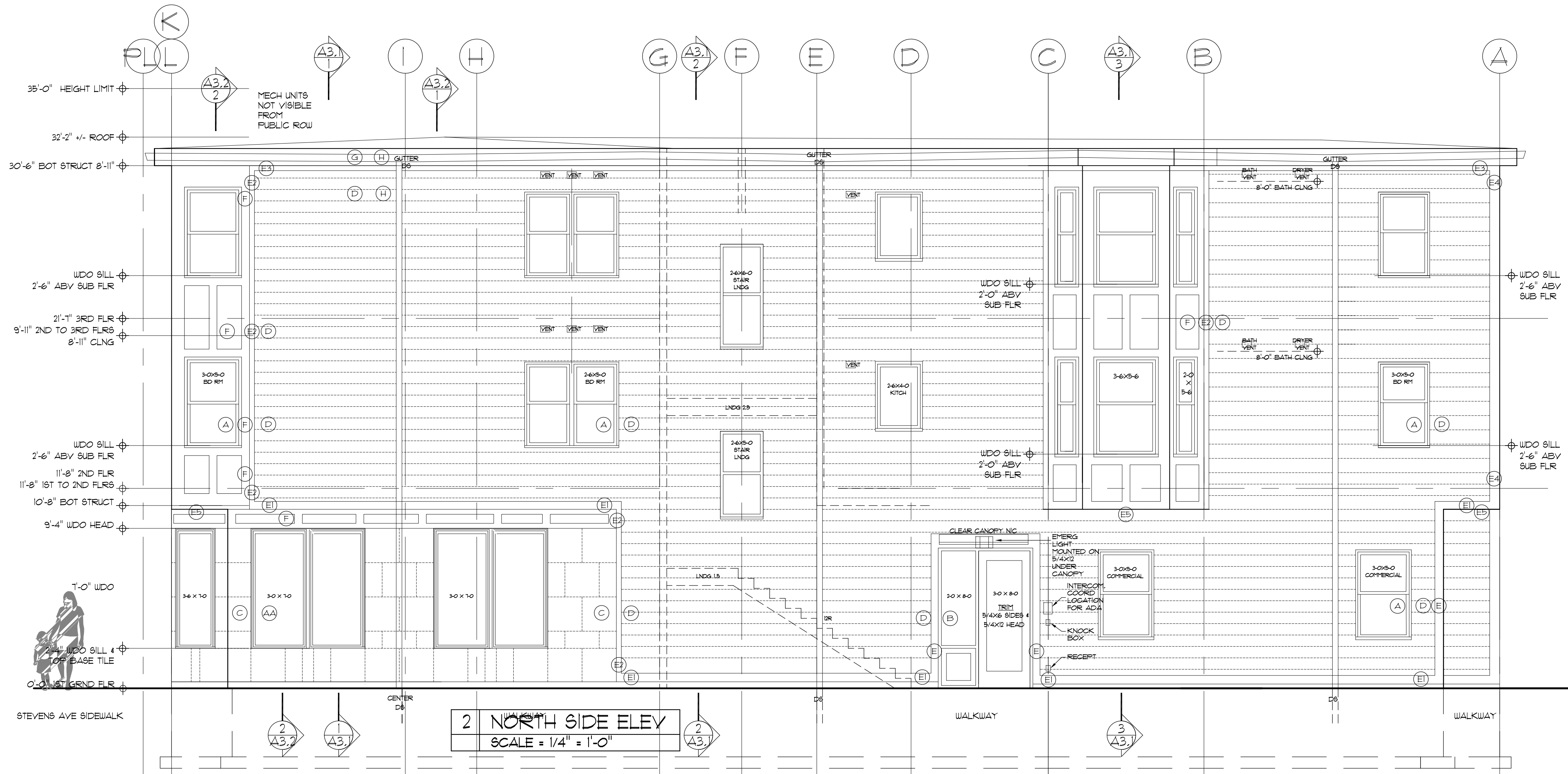
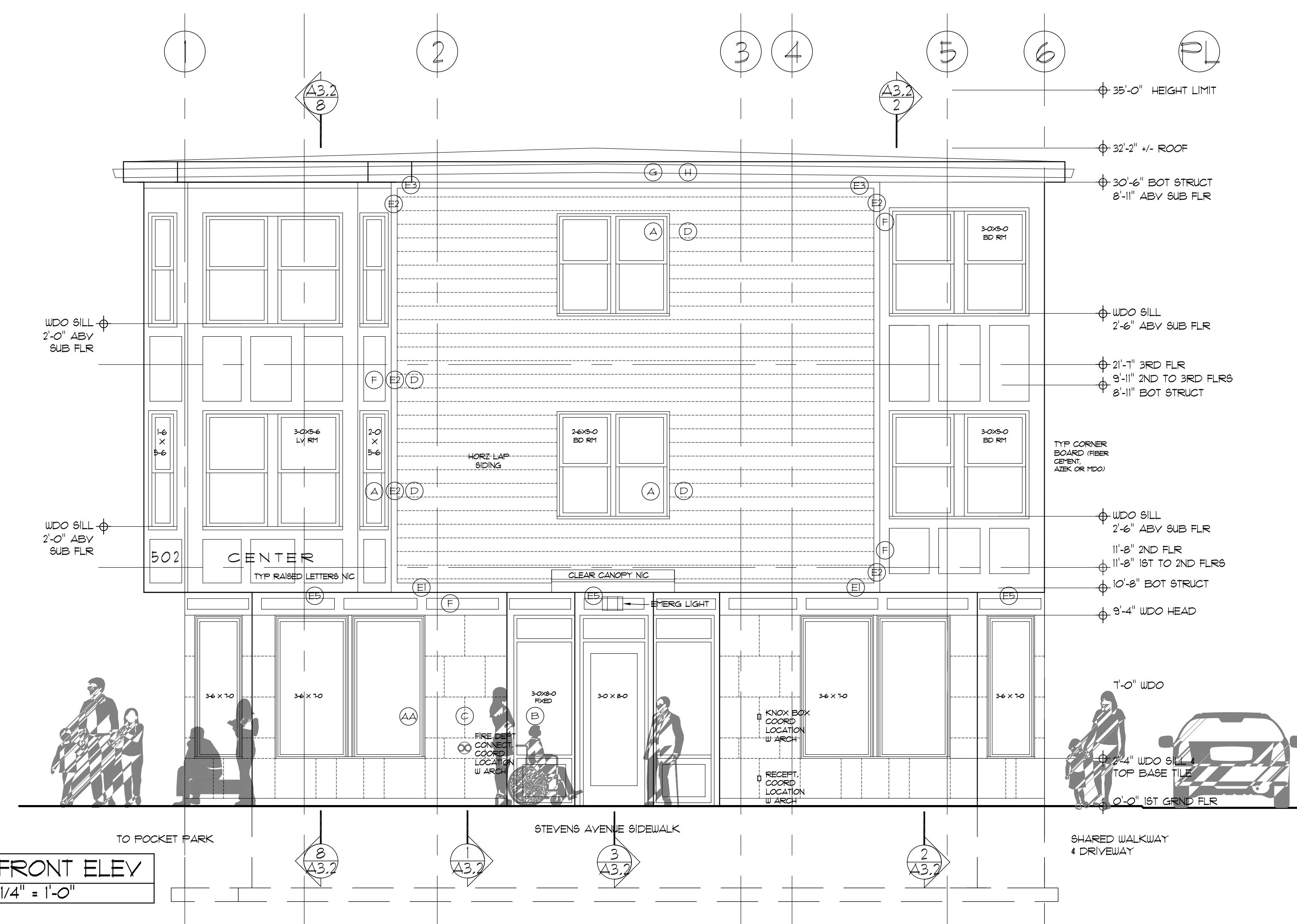
502 DEERING CENTER
NEW MIXED USE
502 STEVENS AVE, PORTLAND ME



EXTERIOR MATERIAL SPECIFICATION/COLOR KEY

TAG	ITEM	SPEC/MATERIAL	COLOR VALUE	COLOR
A	WINDOWS	VINYL SEE WDOS 46.1	DARK	STANDARD BLACK
AA	WINDOWS	ALUM CLAD SEE WDOS 46.1	DARK	STANDARD BLACK
B	STOREFRONT SYSTEM	ALUM SEE 3/A6.2	MED/DARK	STANDARD (MED RED OR BLUE) NOTE: SPANDREL PANELS SAME COLOR APPLIED 1/4" PVC PTD TO MATCH NOTE: SIDE RESIDENTIAL ENTRY 106/1106/2 HAS PVC TRIM PTD TO MATCH
C	TILE	PORCELAIN 3/4" X 3/4" SCHLUTER - KERDI BOARD - 5/16" THICK FASTENED TO STRUCTURAL PLYWOOD. SCHLUTER - KERDI BAND WATERPROOFING FABRIC FOR ALL SEAMS. SCHLUTER MOLDINGS FOR ALL CORNERS AND CAPS WHERE PORCELAIN ENDS WITHOUT PROTECTION. PROMA OR ARDEX - FREEZE TALL SAFE ANT SAG, AND VERTICALLY APPROVED MORTAR ADHESIVE FOR TILE INSTALLATION. ARDEX EPOXY GROUT.		
D	VINYL SIDING	CERTANTEED RESORATION CLASSIC #3618, DOUBLE 4.5", 5/8" OOTH, .044 THICK, 5/8" PROJECTION		STANDARD TED (LIGHT)
E	INTERIOR CORNERS	3/4" INSIDE CORNER POST #5436, MATTE		COLONIAL WHITE
F	PVC VERTI HORZ TRIM	PVC (AZEK)	LIGHT	INTEGRAL WHITE, NO PAINT
G	HORIZ SKIRTBOARD SIDING STARTER	5/16" UNIVERSAL SKIRT W INTEGRAL FLASHING		
H	VERT BAY TRIM TO SIDING TRANSITION	5/4" X 6" RABBETED TO RECEIVE 5/8" SIDING		
I	HORIZ SIDING TO FRIEZE BOARD	5/4" X 6" RABBETED TO RECEIVE 5/8" SIDING		
J	VERT OUTSIDE CORNERBDS (# 2/A, 6/A, 1/G)	5/4" X 6" RABBETED TO RECEIVE 5/8" SIDING		
K	SOFFITT # BAYS	1/2" X 1/2" BEADBOARD (SEE A3.2)		
L	PVC PANEL SYSTEM # BAYS 4 DATA 1	RAILS 4 STILES - 1X PANELS - 3/8" SHEET	LIGHT	INTEGRAL WHITE, NO PAINT
M	FASCIA, SOFFITT 4 FRIEZE	SHEET ALUM, 20 GA (CONFRM)		STANDARD WHITE
N	GUTTERS	SEAMLESS ALUM GUTTERS, 20 GA (CONFRM GA 4 SIZE)		STANDARD WHITE
O	DOWNSPOUTS	ALUM HEAVY GA (1) TO WITHSTAND 1ST FLR DAMAGE 4 FREEZING, CONFIRM SIZE		
P	FIBERGLASS DOOR	STANDARD RESIDENTIAL EXT DOOR W JAMB BOTTOMS PROTECTED FR MOISTURE		PTD COLOR TED
Q	ROOF	STANDARD MEMBRANE .0601 OVER TAPERED INSL BOARD, COLOR (TED)		
R	ROOF HATCH	THERMALLY BROKEN, ALUM, INSULATED COVER 4 CURB, 30X54, BILCO NB50-TB		

4 EXT MATERIAL SPECS & COLOR KEY
SCALE = NONE



TITLE:
ELEVATIONS & ROOF PLAN

REV	DATE	ISSUE
D		
C	07/10 2017	PLAN REVIEW REVISIONS
B	07/16 2017	CONSTRUCTION
A	06/19 2017	CONSTRUCTION

DRAWING NO:
A2.1