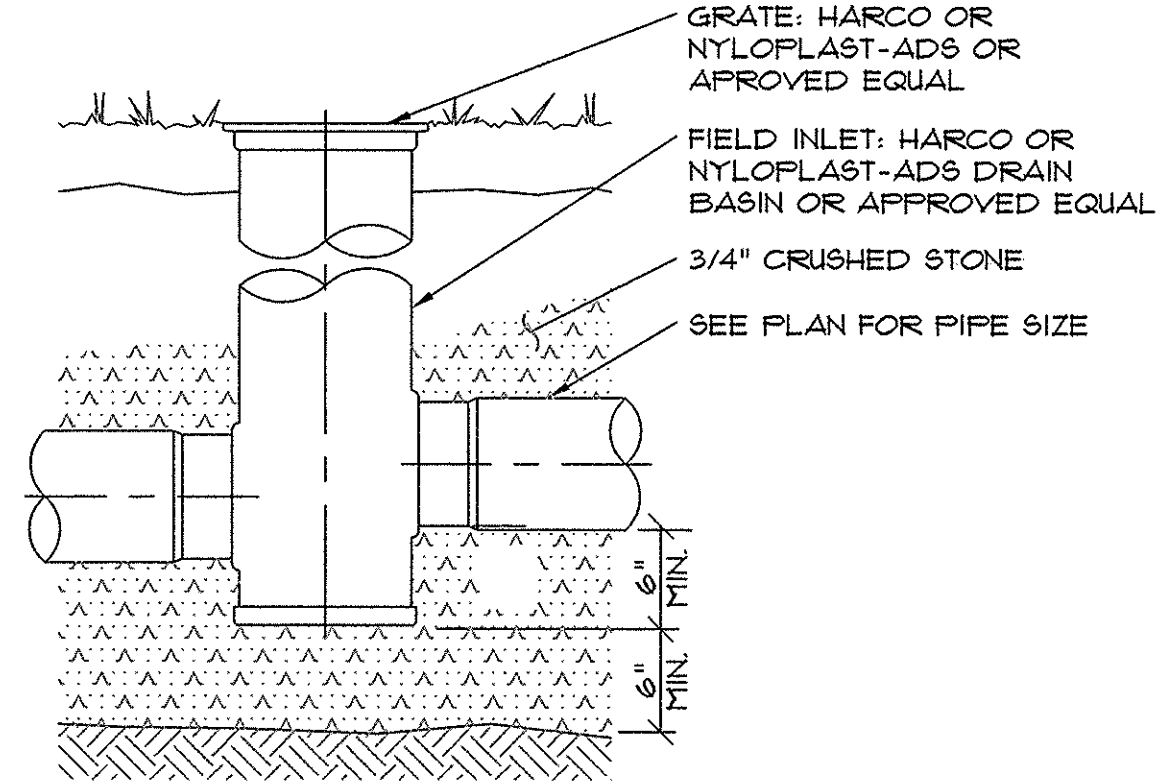
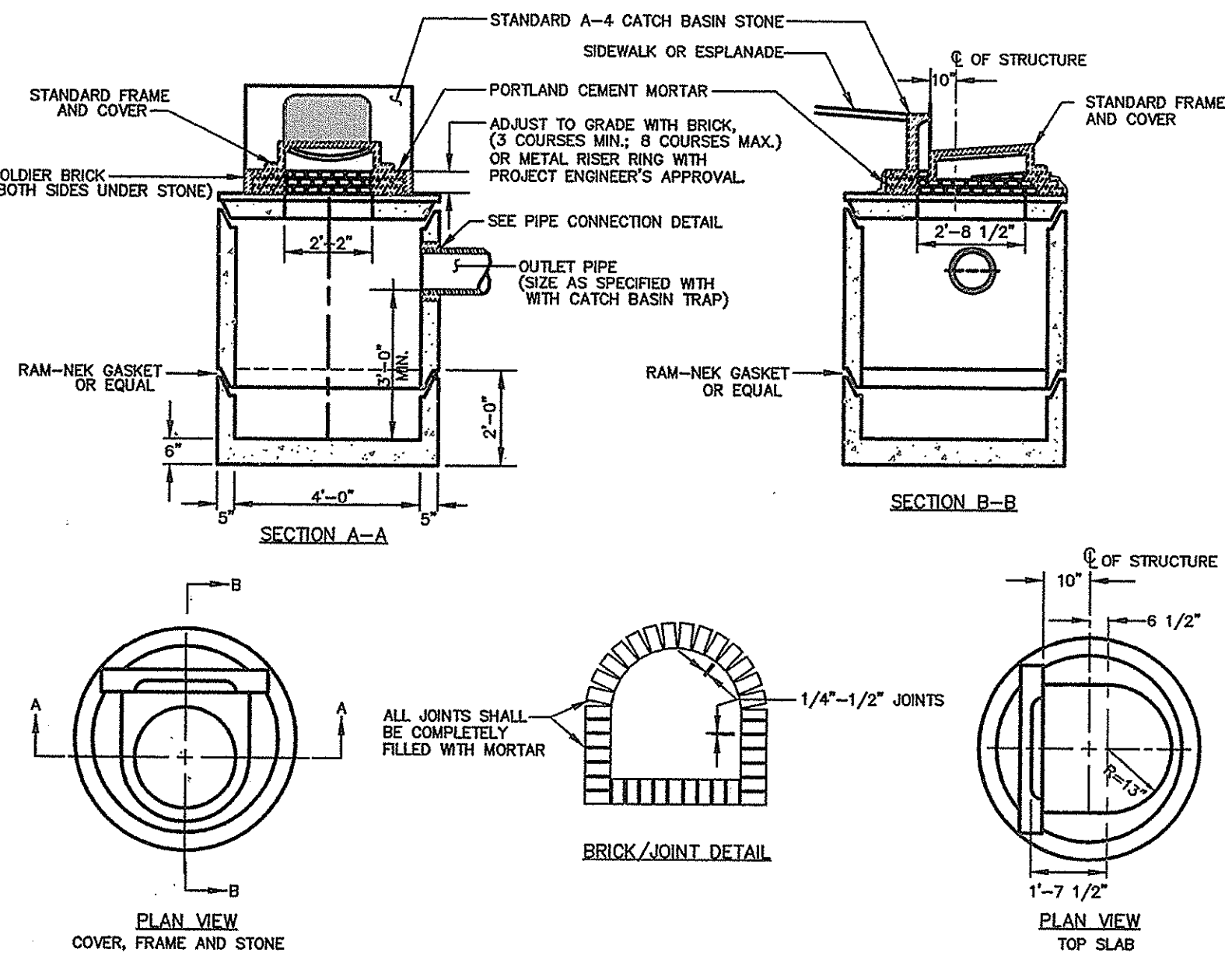


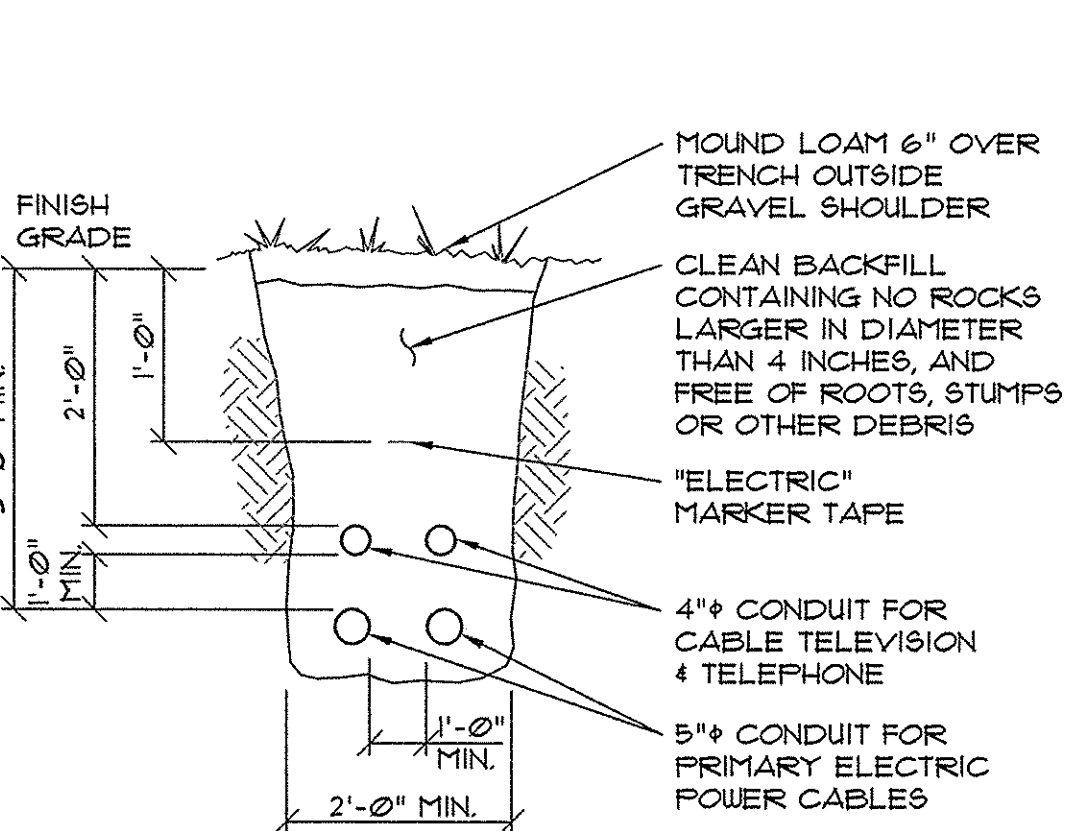
6 GAS PIPING TRENCH SECTION
NOT TO SCALE



5 FIELD INLET DETAIL
NOT TO SCALE

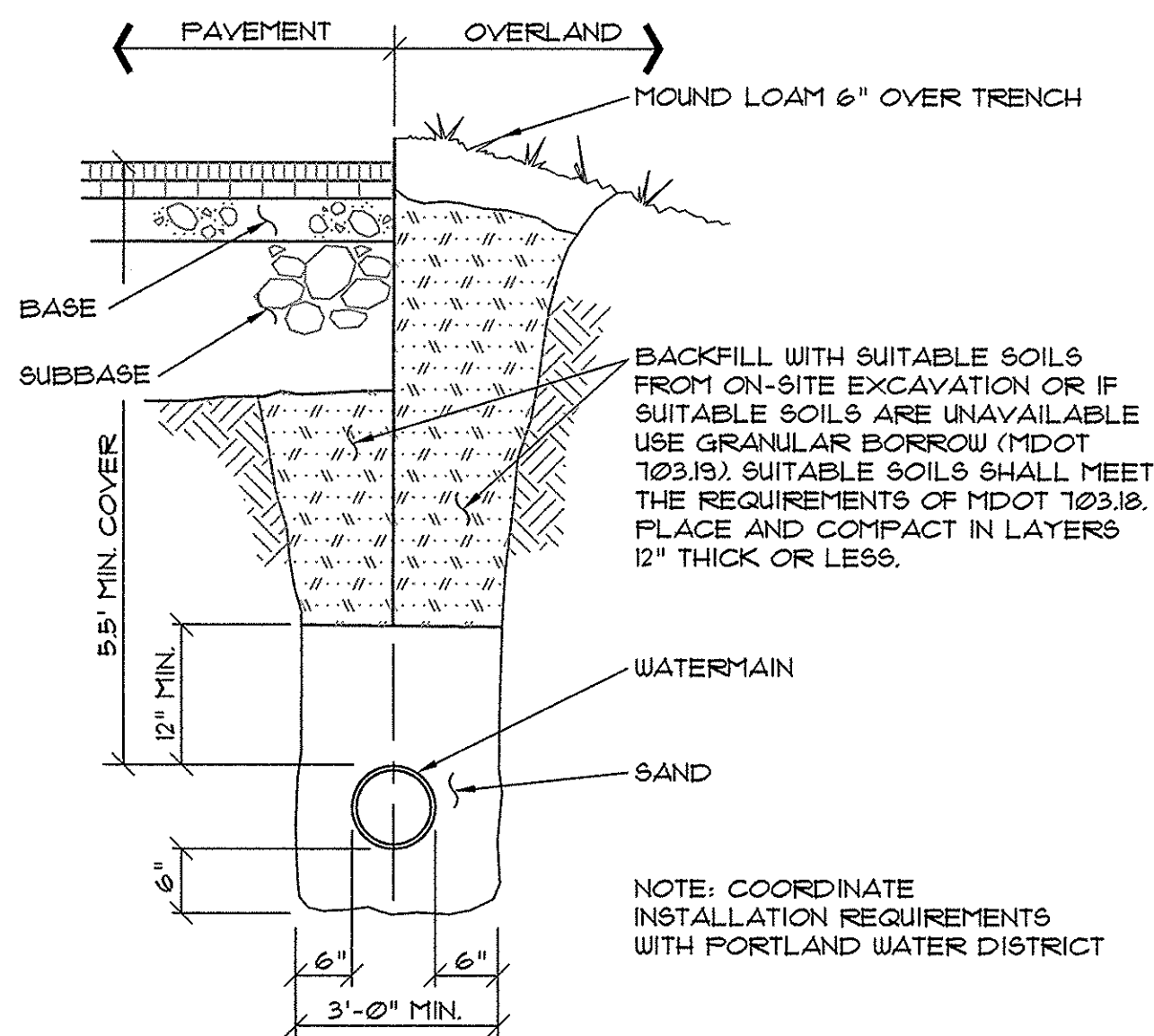


4 CATCHBASIN #1 SECTION (II-2)
NOT TO SCALE

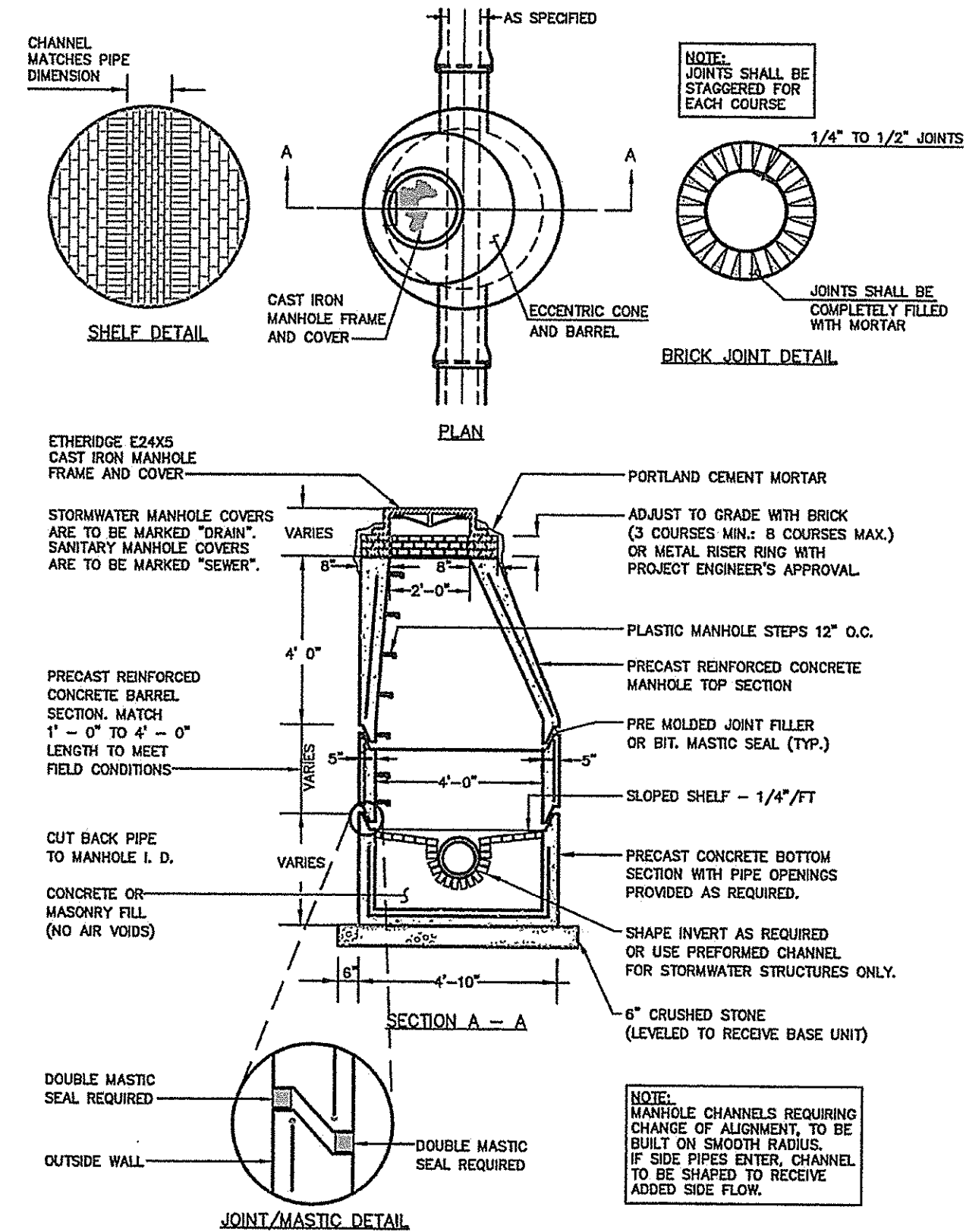


- NOTES:
- INSTALLATION SHALL NOT ALLOW INTER-TWILING OF CABLES.
 - DIRECT BURY ELECTRICAL CABLES MAY BE USED IF ALLOWED BY CENTRAL MAINE POWER.
 - CONFIRM CONDUIT SIZES WITH INDIVIDUAL UTILITY COMPANIES PRIOR TO INSTALLATION.
 - COORDINATE FINAL LAYOUT WITH INDIVIDUAL UTILITY COMPANIES.

9 CABLE TRENCH SECTION
NOT TO SCALE



8 TYPICAL WATER MAIN SECTION
NOT TO SCALE



7 PRECAST CONCRETE MANHOLE (II-1)
NOT TO SCALE

UNDERGROUND UTILITIES WARNING TAPE

IDENTIFICATION TAPE TO BE INSTALLED ABOVE ALL NEW UNDERGROUND UTILITIES AND ABOVE ANY EXISTING UTILITIES THAT MAY BE EXPOSED BY THIS CONSTRUCTION.

DETECTABLE UNDERGROUND MARKING TAPE TO BE PERMANENT, BRIGHT-COLORED, CONTINUOUS-PRINTED PLASTICIZED ALUMINUM TAPE, INTENDED FOR DIRECT-BURIAL SERVICE NOT LESS THAN 3" WIDE x 5 MILS THICK. PROVIDE TAPE WITH BLACK PRINTING IDENTIFYING THE UTILITY. DETECTABLE WARNING TAPE REQUIRED OVER ALL WATER, SEWER, DRAINAGE, OR GAS UTILITIES. TAPE TO BE TERRA TAPE BY REEF INDUSTRIES, INC., www.reefindustries.com, OR EQUAL.

AFLUA UNIFORM COLOR CODE:

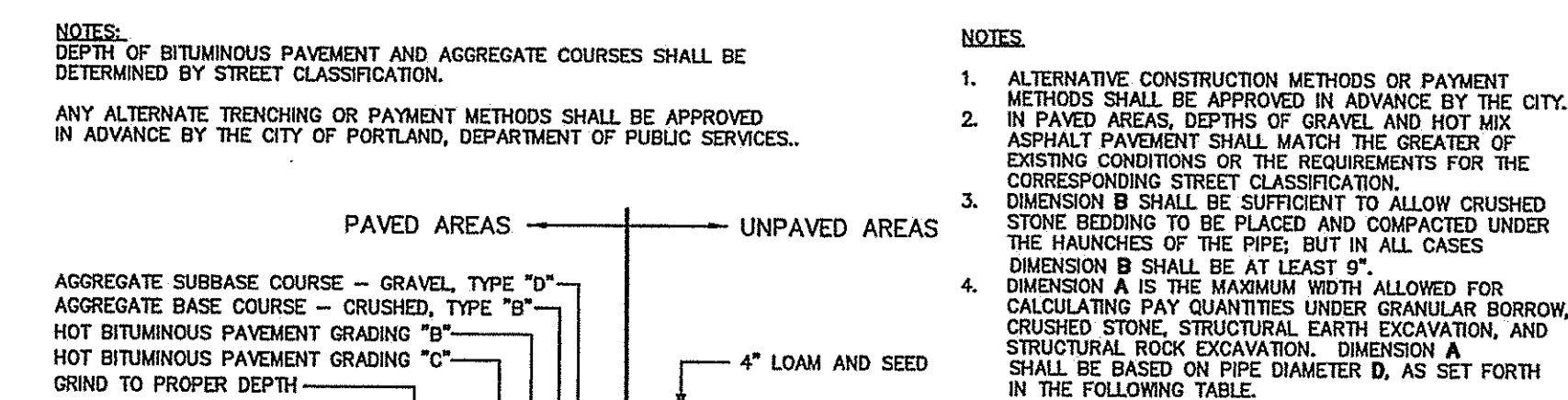
WHITE	PROPOSED EXCAVATION
PINK	TEMPORARY SURVEY MARKINGS
RED	ELECTRIC POWER LINES, CABLES, CONDUIT AND LIGHTING CABLES
YELLOW	GAS, OIL, STEAM, PETROLEUM OR GASEOUS MATERIALS
ORANGE	COMMUNICATION, ALARM OR SIGNAL LINES, CABLES OR CONDUIT
BLUE	POTABLE WATER
PURPLE	RECLAIMED WATER, IRRIGATION AND SLURRY LINES
GREEN	SEWERS AND DRAIN LINES

GENERAL NOTES FOR MANHOLES AND CATCH BASINS

- ALL CONCRETE SHALL HAVE A MINIMUM ULTIMATE COMPRESSIVE STRENGTH OF 4000 lbs. PER SQ. INCH AT THE END OF 28 DAYS, UNLESS OTHERWISE NOTED.
- MANHOLES MAY BE CONSTRUCTED OF PRECAST REINFORCED CONCRETE, OR CAST IN PLACE.
- PRECAST REINFORCED CONE BARREL MANUFACTURED PER ASTM SPEC. C-478.
- ALL STORM AND SEWER MANHOLE COVERS SHALL BE SOLID AND SHALL HAVE ONE 1/8" DIAMETER DRILLED PICK HOLE LOCATED 8" FROM THE CENTER OF THE COVER.
- ALL SANITARY MANHOLE COVERS SHALL HAVE "SEWER" CAST INTO THE COVER. ALL STORMWATER DRAIN MANHOLE COVERS SHALL HAVE "DRAIN" CAST INTO THE COVER.
- ALL MANHOLE RISERS SHALL BE ETHERIDGE 24" OR APPROVED EQUAL.
- SEWER BRICK SHALL CONFORM TO ASTM SPEC. DESIGNATE ON C-32-83, GRADE MA AND SA.
- ALL SANITARY MANHOLES SHALL HAVE A WATERPROOFING COATING APPLIED TO THE EXTERIOR SURFACE.
- CATCH BASIN FRAMES FOR TYPE A4 CATCH BASIN CURB INLETS SHALL BE ETHERIDGE DRSA OR APPROVED EQUAL.
- CASTINGS SHALL CONFORM TO ASTM DESIGNATION A48-CLASS 35.
- EXISTING MANHOLES, CATCH BASINS, FRAMES, AND COVERS SHALL BE SALVAGED BY THE CONTRACTOR, AND SHALL REMAIN THE PROPERTY OF THE CITY OF PORTLAND.
- ALL CATCH BASIN OUTLETS SHALL BE INSTALLED WITH A CASCO TRAP. SEE FIGURE II-09.

GENERAL NOTES FOR MANHOLES AND CATCH BASINS (II-4)

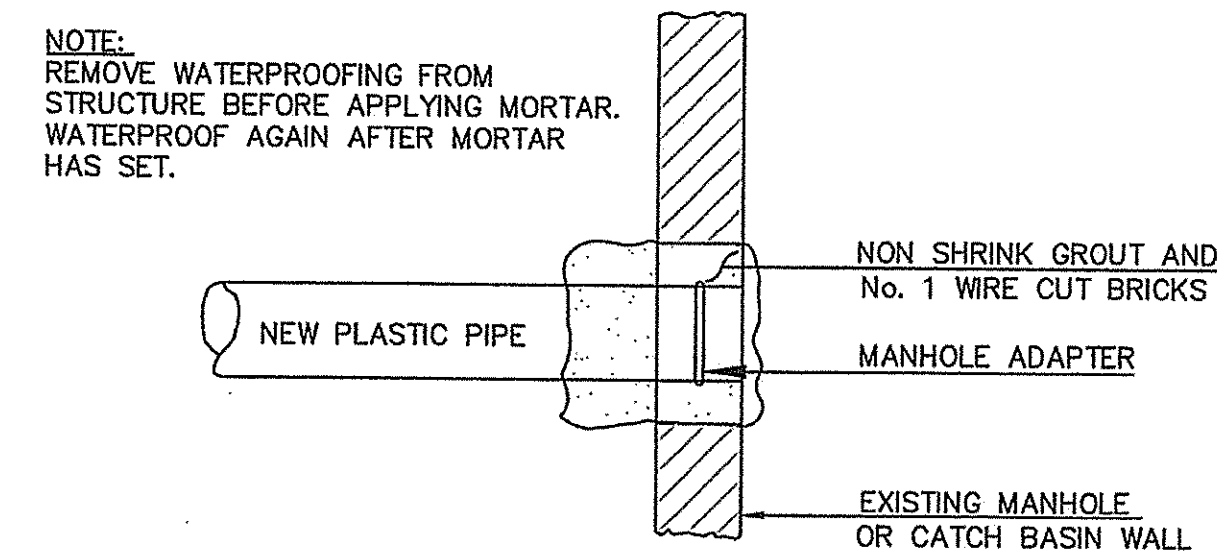
NOT TO SCALE



PIPE DIAMETER, D (INCHES)	MAX. TRENCH WIDTH, A (FEET)
4	4.0
6	4.0
8	4.0
10	4.0
12	5.0
15	5.0
18	5.0
21	5.0
24	6.0
27	6.0
30	6.0
36	6.0
42	7.0
48	7.0

2 TYPICAL PIPE TRENCH INSTALLATION (II-12)

NOT TO SCALE



3 PLASTIC PIPE CONNECTION METHODS (II-14)

NOT TO SCALE

Project Name:
502 Deering Center
Portland, Maine

Owner / Applicant:

502 Deering Center, LLC
55 Hamblet Avenue
Portland, Maine 04103

Consultants:

Architect
Lachman Architects & Planners
58 Fore Street, Bldg 30
Portland, Maine 04101
207.831.8585
Contact: Denis Lachman

Landscape Architects
Carroll Associates
217 Commercial St.
Portland, Maine 04101
207.772.1552
Contact: Patrick Carroll

Civil Engineer
Pinkham & Greer Civil Engineers
28 Vannah Ave.
Portland, ME 04103
207.781.5242
Contact: Thomas Greer

Surveyor
Four Points Associates, Inc.
9 Ralph Avenue
Lewiston, Maine 04240
207.577.5840
Contact: Donald Dostie

Drawing Set:

No.	Date	Revision
1	12-22-16	SITE PLAN REVIEW-FINAL
2	2-7-17	REV'D PER CITY COMMENTS
3	3-14-17	REV'D PER CITY COMMENTS
4	4-12-17	FINAL CITY PLANS

Drawing Set:

PERMITTING

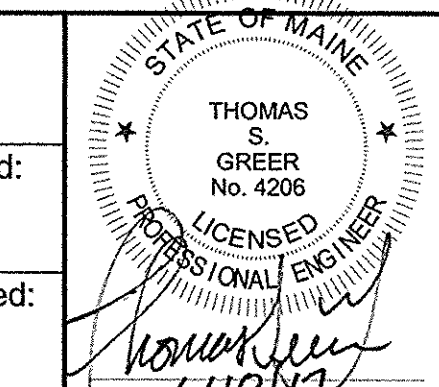
Drawn:

JDC

Checked:

TSG

Approved:



Drawing Title:

CIVIL DETAILS

Job Number: PG: 16193

File:

Date: 12-22-2016 Scale: AS SHOWN

Drawing Number:

C 7.0

© 2017 CARROLL ASSOCIATES