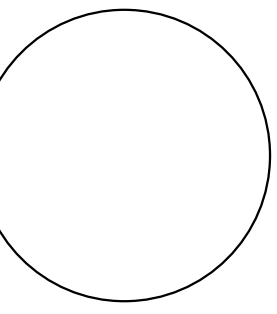


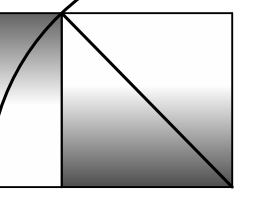


Reviewed for Code Compliance
Permitting and Inspections Department
Approved with Conditions
11/05/2018

PORCH RENOVATION
546 STEVENS AVENUE
PORTLAND, MAINE



WHIPPLE
CALLENDER
ARCHITECTS



136 PLEASANT AVE.
PORTLAND, ME 04103
P 207.775.2696
F 207.775.3631
www.whipplecallender.com

DESCRIPTION

DATE

MARK

DATE:

11/5/18 - PERMIT

CHECKED BY:

JAD

DRAWN BY:

CLBC

JOB:

STE 2018

SHEET TITLE:

GENERAL NOTES

A0.2

LEGEND

MATERIALS

- GRAVEL
- CONCRETE MASONRY UNIT
- BRICK
- CONCRETE
- SOIL
- STEEL
- WOOD FRAMING
- WOOD BLOCKING
- PLYWOOD
- GYPSUM BOARD
- BATT INSULATION
- RIGID INSULATION
- EXPANSION MATERIAL
- FINISH WOOD

FIRE RATING

- 2 HOUR RATED FIRE SEPARATION
- 1 HOUR RATED FIRE SEPARATION
- SMOKE PARTITION

SYMBOLS

- PLUMBING FIXTURE
- BARRIER FREE FIXTURE
- ROOM NUMBER
- DOOR NUMBER
- WINDOW TYPE; LETTER DESIGNATES EXTERIOR
- BORROWED LITE TYPES; DESIGNATED BY NUMBER
- FLOOR LEVEL CHANGE
- BUILDING SECTION
- WALL SECTION
- DETAIL REFERENCE
- WALL OR ROOF TYPE
- ELEVATION REFERENCE
- VERTICAL ELEVATION
- COLUMN CENTERLINE
-

ABBREVIATIONS

AB	ANCHOR BOLT	LAB	LABORATORY
AB	AIR BARRIER	LAM	LAMINATE(D)
AC	AIR CONDITIONING	LAV	LAVATORY
ADDL	ADDITIONAL	LB	POUND(S)
ADJ	ADJUSTABLE	LCC	LEAD COATED COPPER
AFF	ABOVE FINISHED FLOOR	LF	LINEAR FOOT
AH	AIR HANDLER	LH	LEFT HAND
AIB	AIR INFILTRATION BARRIER	LOC'N	LOCATION
ALT	ALTERNATE	LW	LIGHTWEIGHT (CMU)
ALUM	ALUMINUM	MS	MASONRY
AOR	AREA OF REFUGE	MATL	MATERIAL
APPROX	APPROXIMATE	MAX	MAXIMUM
ARCH	ARCHITECT(URAL)	MC	MEDICINE CABINET
ARND	AROUND	MCWF	MULTICOLOR WALL FINISH
AWP	ACOUSTICAL WALL PANEL	MDO	MEDIUM DENSITY OVERLAY
BD	BOARD	MECH	MECHANICAL
BF	BARRIER FREE	MED	MEDIUM
BIT	BITUMINOUS	MF	MEMBRANE FLASHING
BLDG	BUILDING	MFR	MANUFACTURER
BLKG	BLOCKING	MH	MANHOLE
BM	BENCHMARK	MIN	MINIMUM
BOT	BOTTOM	MISC	MISCELLANEOUS
BO	BOTTOM OF	MLDG	MOULDING
BRK	BRICK	MO	MASONRY OPENING
BRG	BEARING	MR	MOISTURE RESISTANT
B/S	BRICK SHELF	MRGB	MOISTURE RESISTANT GYPSUM BOARD
BSMT	BASEMENT	MS	MOP SINK
		MSF	METAL STUD FRAMING
		MTL	METAL
C.CRS	COURSE	NA	NORTH
CAB	CABINET	N	NOT APPLICABLE
CB	CATCH BASIN	NIC	NOT IN CONTRACT
CC	CENTER TO CENTER	NO	NUMBER
CF	CUBIC FOOT	NOM	NOMINAL
CFMF	COLD FORMED METAL FRAMING	NRC	NOISE REDUCTION COEFFICIENT
CJ	CONTROL JOINT	NTS	NOT TO SCALE
CL	CENTER LINE	O/	OVER
CLG	CELLING	OC	ON CENTER
CLR	CLEAR	OD	OUTSIDE DIAMETER
CMT	CERAMIC MOSAIC TILE	OFS	OVERFLOW SCUPPER
CMU	CONCRETE MASONRY UNIT	OP	OPAQUE
CO	CLEAN-OUT	OH	OVERHEAD
COL	COLUMN	OPH	OPPOSITE HAND
CONC	CONCRETE	OPNG	OPENING
CONC/C	COLORED CONCRETE	OPP	OPPOSITE
CONT	CONTINUOUS OR CONTINUE	OPS	OPERABLE PANEL SYSTEM
CONTR	CONTRACTOR		
CPT	CARPET	P.PTD	PAINT
CS	COUNTERSINK	PC	PRECAST CONC.
CSMT	CASEMENT	PERF	PERFORATED
CT	CERAMIC TILE	PERIM	PERIMETER
CWT	CERAMIC WALL TILE	PRKG	PARKING
CUH	CABINET UNIT HEATER	PL	PLATE
CY	CUBIC YARD	PLAM	PLASTIC LAMINATE
		PLYWD	PLYWOOD
DBL	DOUBLE	PSF	POUNDS PER SQUARE FOOT
DC	DISPLAY CASE	PSI	POUNDS PER SQUARE INCH
DEMO	DEMOLISH, DEMOLITION	PT	PRESSURE TREATED
DF	DRINKING FOUNTAIN	PTD	PAPER TOWEL DISPENSER
DIA, DIAM	DIAMETER	PTN	PARTITION
DIM	DIMENSION	PVC	POLYVINYL CHLORIDE
DIV	DIVISION	PVMT	PAVEMENT
DMP	DEMOUNTABLE PARTITION	PWDR	POWDER ROOM
DN	DOWN	QR	QUARTER ROUND
DR	DOOR	QT	QUARRY TILE
DTL	DETAIL	QTZ	QUARTZ TILE
DWG	DRAWING		
DWR	DRAWER	RE:	REFERENCE
E	EAST	REF	REFRIGERATOR
EA	EACH	REQ'D	REQUIRED
EF	EXHAUST FAN	REV	REVISION(S), REVISED
EMHO	ELECTRO MAGNETIC HOLD OPEN	RL	RAIN LEADER
EIFS	EXTERIOR INSULATION FINISH SYSTEM	RF	RUBBER FLOOR
EJ	EXPANSION JOINT	RH	RIGHT HAND
EL	ELEVATION	RM	ROOM
EP	EPOXY PAINT	RO	ROUGH OPENING
ELEC	ELECTRICAL	ROW	RIGHT OF WAY
ELEV	ELEVATOR		
EMER	EMERGENCY	S	SOUTH
ENCL	ENCLOSED/ENCLOSURE	SAT	SUSPENDED ACOUSTICAL TILE
EQ	EQUAL	SC	SOLID CORE
EQUIP	EQUIPMENT	SCONC	SEALED CONCRETE
EXH	EXHAUST	SCHED	SCHEDULE
EXIST	EXISTING	SD	STORM DRAIN, SOAP DISPENSER
EXT	EXTERIOR	SECT	SECTION
EW	EYEWASH	SF	SQUARE FOOT
EWG	ELECTRIC WATER COOLER	SGL	SAFETY GLASS
		SH	SHOWER
FB	FIRE BLANKET	SHT	SHEET
FBO	FURNISHED BY OWNER	SHTHG	SHEATHING
FCS	FLOOR COATING SYSTEM	SHM	SIMILAR
FD	FLOOR DRAIN	SMT	SEALANT
FE	FIRE EXTINGUISHER	SNR	SANITARY NAPKIN RECEPTOR
FEC	FIRE EXTINGUISHER AND CABINET	SP	SPECIAL PAINT
FE	FINISHED FLOOR ELEVATION	SPEC	SPECIFICATION
FG	FIBERGLASS	SPKR	SPEAKER
FHVC	FIRE HOSE AND VALVE CABINET	SQ	SQUARE
FIN	FINISHED(ED)	SS	STAINLESS STEEL
FIN GR	FINISH GRADE	STC	SOUND TRANSMISSION CLASS
FLR	FLOORING	STD	STANDARD
FNDN	FOUNDATION	STL	STEEL
FP	FIREPROOFING	STOR	STORAGE
FR	FACE OF	STR	STRUCTURAL
FRMG	FRAME(ING)	STRCT	STRUCTURES/STRUCTURAL
FRP	FIBER REINFORCED PLASTIC	SUPT	SUPPORT
FRT	FIRE RETARDANT TREATED	SUSP	SUSPENDED
FRS	FRAME SIZE	SV	SHEET VINYL
FSR	FLEXIBLE SHEET ROOFING		
FT	FOOT(FEET)	T	TOILET
FTG	FOOTLONG	TB	TOWEL BAR
FTR	FIN TUBE RADIATION	TB	TACK-BOARD
FUR	FURRING	T&G	TONGUE & GROOVE
FV	FIELD VERIFY	TGL	TEMPERED GLASS
FWC	FABRIC WALL COVERING	THK	THICK(NESS)
		TO	TOP OF
GA	GAUGE	TP	TOILET PARTITION
GALV	GALVANIZED	TPD	TOILET PAPER DISPENSER
GB	GRAB BAR	TV	TELEVISION
GB	GROUND FACE CMU	TYP	TYPICAL
GL	GLASS, GLAZING		
GWB	GYPSUM WALLBOARD	UCR	UNDER COUNTER REFRIGERATOR
		UNO	UNLESS NOTED OTHERWISE
HARD	HARDENER	VB	VAPOR BARRIER/VINY BASE
HB	HOSE BIBB	VC	VALVE CABINET
HC	HOLLOW CORE	VCT	VINYL COMPOSITION TILE
HD	HEAD	VERT	VERTICAL
HDO	HIGH DENSITY OVERLAY	VPW	VENEER PLYWOOD
HDWD	HARDWOOD	WVC	VINYL WALL COVERING
HDWR	HARDWARE		
HM	HOLLOW METAL	W	WEST
HORIZ	HORIZONTAL	WI	WITH
HR	HAND RAIL	WC	WATER CLOSET
HS	HIGH SCHOOL	WD	WOOD
HT	HEIGHT	WGL	WIRE GLASS
HTG	HEATING	WH	WATER HEATER
HVAC	HEATING/VENTILATION/AIR CONDITIONING	WO	WITHOUT
		WS	WATERSTOP
IBC	INSTALLED BY CONTRACTOR	WP	WATERPROOF
ID	INSIDE DIAMETER	WWF	WELDED WIRE FABRIC
ID	INCH(S)	WWM	WELDED WIRE MESH
INCL	INCLUDE(D), (ING)		
INFO	INFORMATION	YD	YARD
INSUL	INSULATED	ZCC	ZINC-COATED COPPER
INT	INTERIOR		
INV	INVERT		
JT	JOINT		
KIT	KITCHEN		

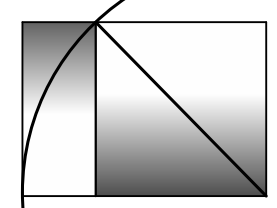


Reviewed for Code Compliance
Permitting and Inspections Department
Approved with Conditions

11/05/2018

PORCH RENOVATION
PORTLAND, MAINE
546 STEVENS AVENUE

**WHIPPLE
CALLENDER
ARCHITECTS**



136 PLEASANT AVE.
PORTLAND, ME 04103
P 207.775.2696
F 207.775.3631
www.whipplecallender.com

DESCRIPTION

DATE

MARK

DATE:

11/5/18 - PERMIT

CHECKED BY:

JAD

DRAWN BY:

CLBC

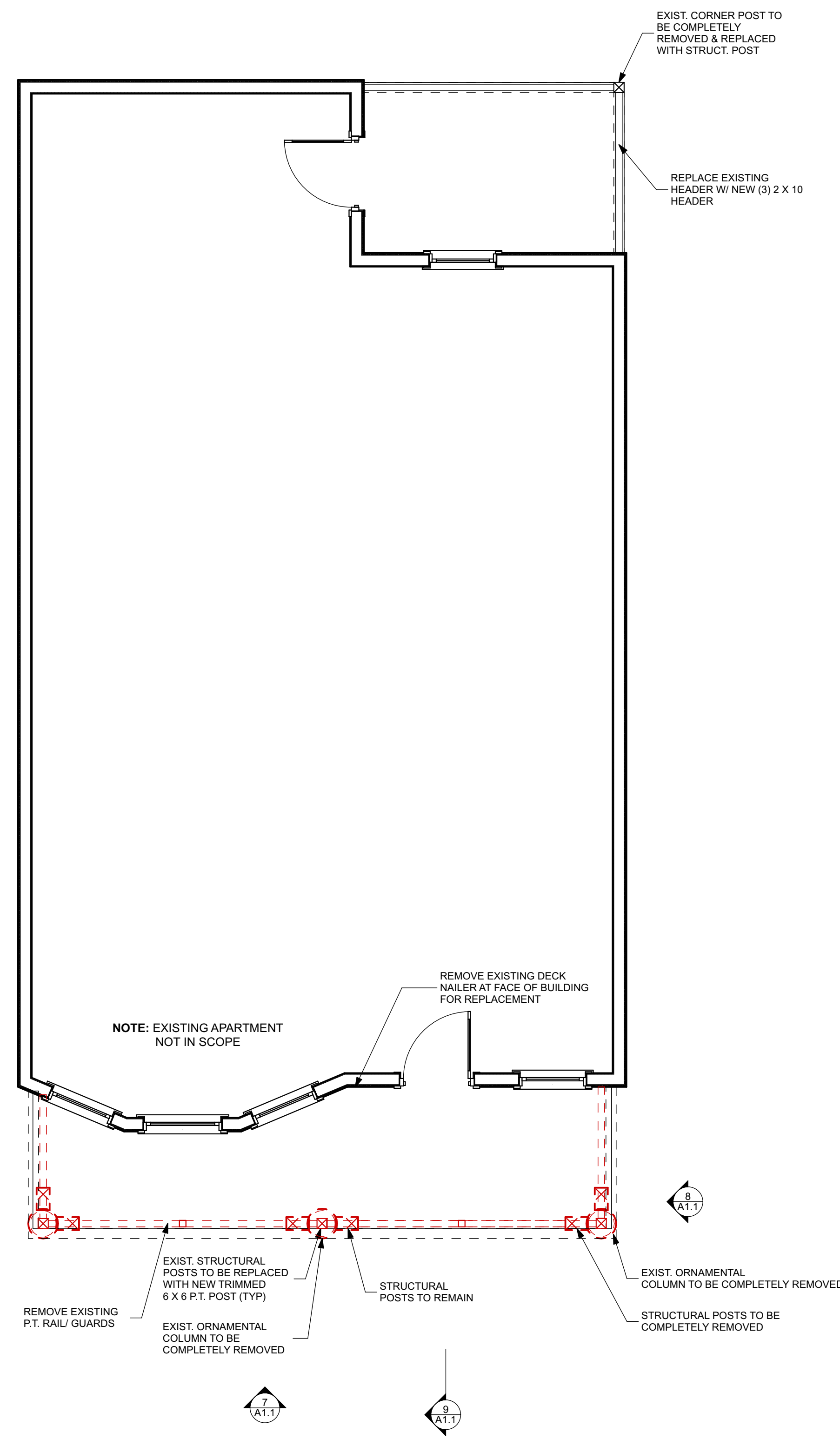
JOB:

STE 2018

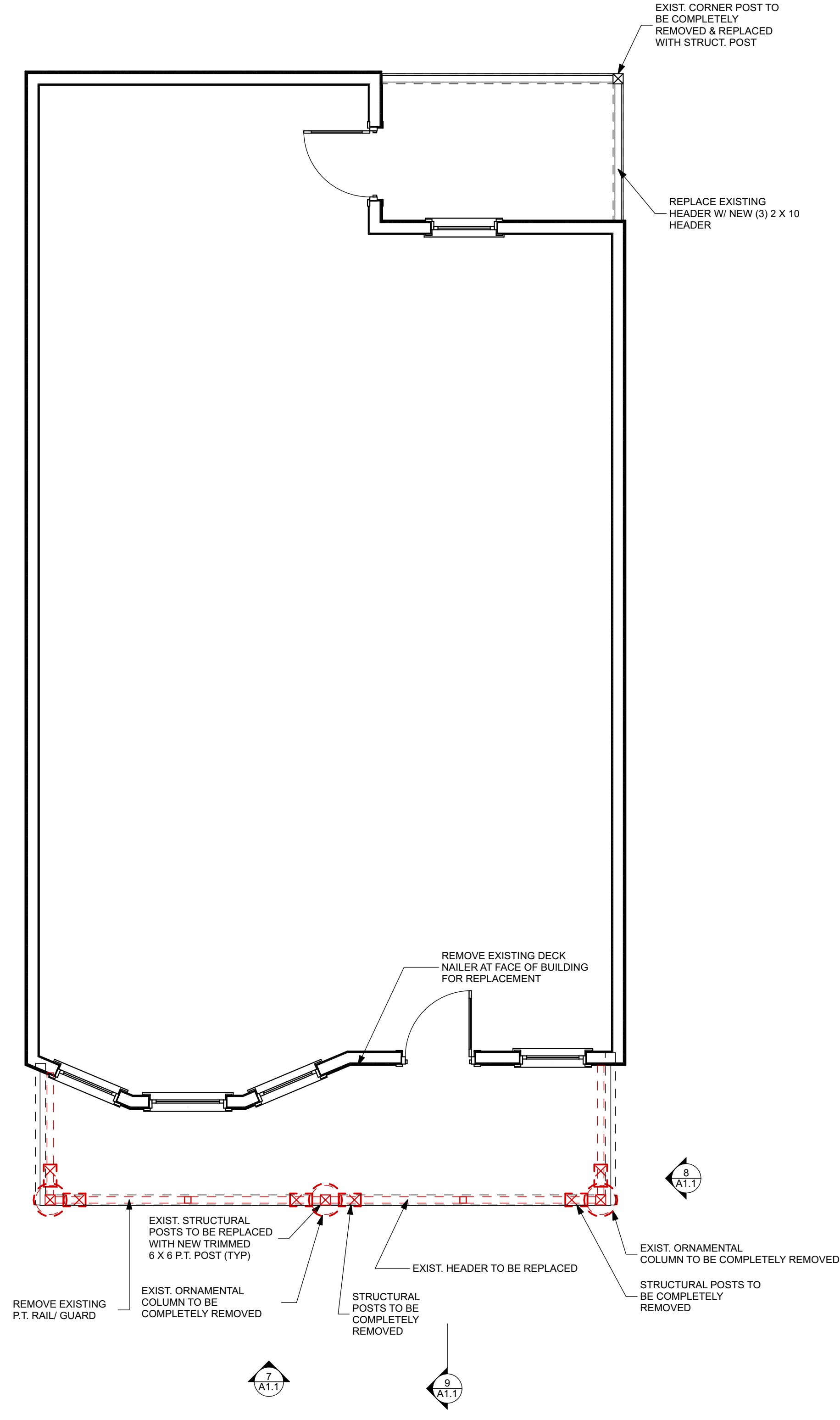
SHEET TITLE:

DEMO PLANS

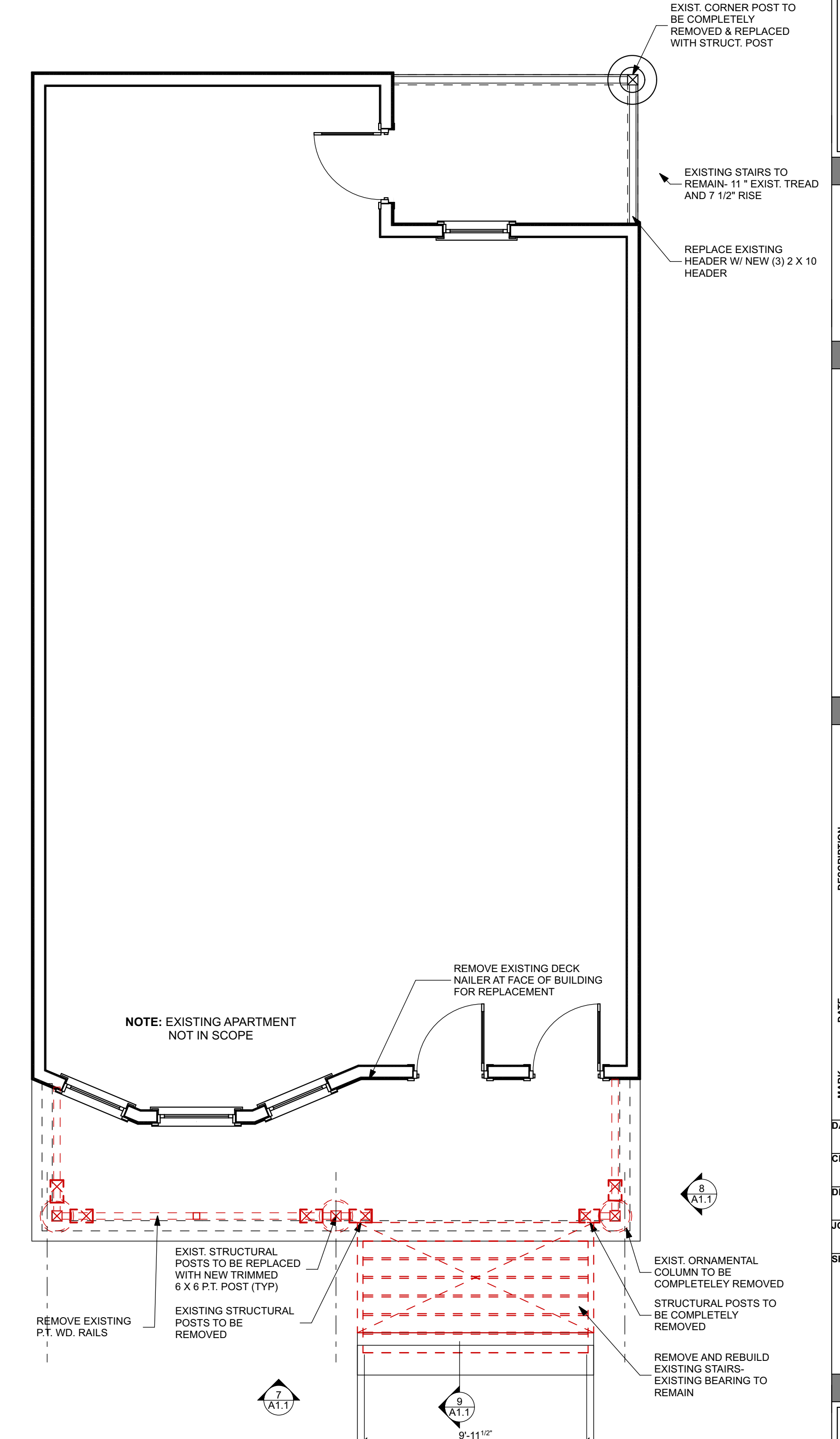
D.1



2
D.1 **THIRD FLOOR PLAN**
SCALE: 1/4" = 1'-0"



3
D.1 **SECOND FLOOR DEMO PLAN**
SCALE: 1/4" = 1'-0"

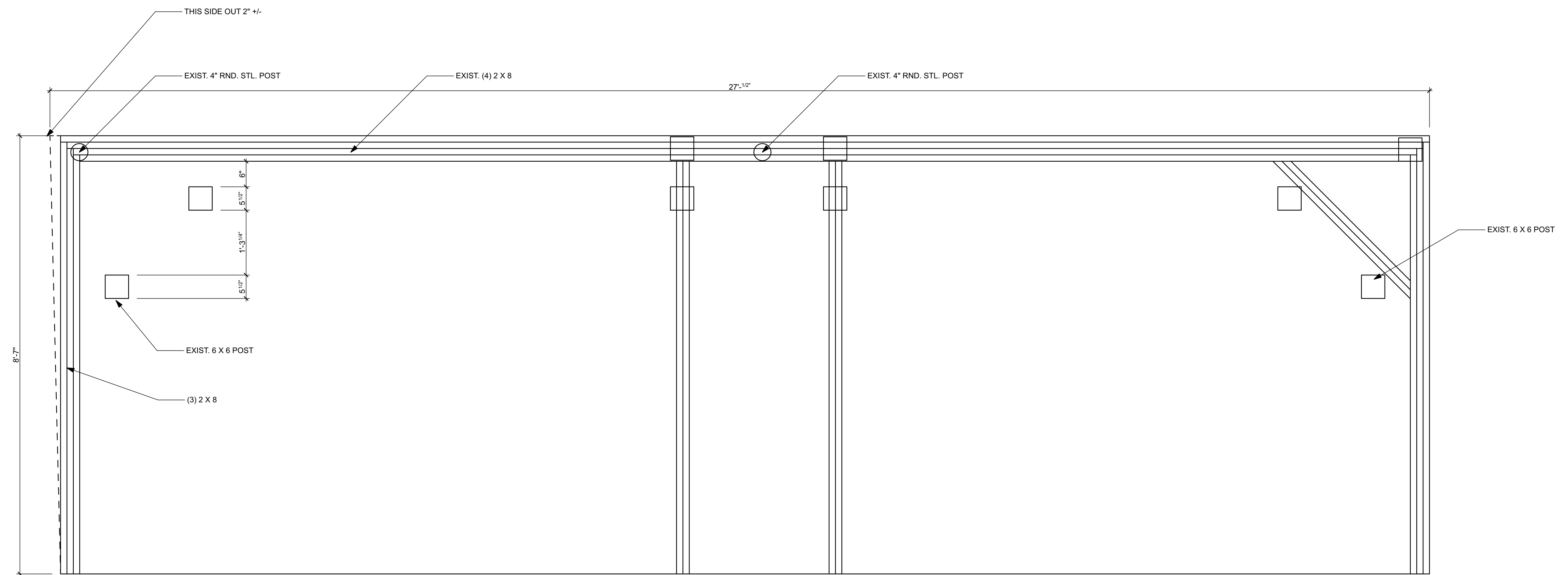


1
D.1 **FIRST FLOOR DEMO PLAN**
SCALE: 1/4" = 1'-0"

THIS DRAWING IS AN INSTRUMENT OF SERVICE AND SHALL REMAIN THE PROPERTY OF WHIPPLE CALLENDER ARCHITECTS. IT SHALL NOT BE USED FOR ANY OTHER PURPOSE THAT FOR WHICH IT IS SPECIFICALLY FURNISHED.

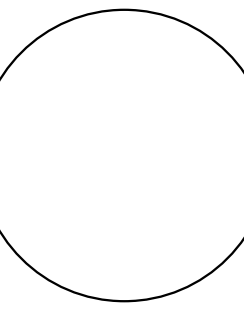


Reviewed for Code Compliance
 Permitting and Inspections Department
 Approved with Conditions
 11/05/2018

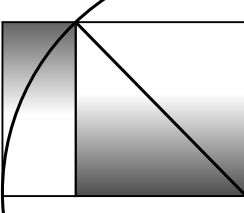


1
A5.1 **GROUND FLOOR DECK STRUCT. PLAN**
 SCALE: 3/4" = 1'-0"

PORCH RENOVATION
 546 STEVENS AVENUE
 PORTLAND, MAINE



**WHIPPLE
 CALLENDER
 ARCHITECTS**

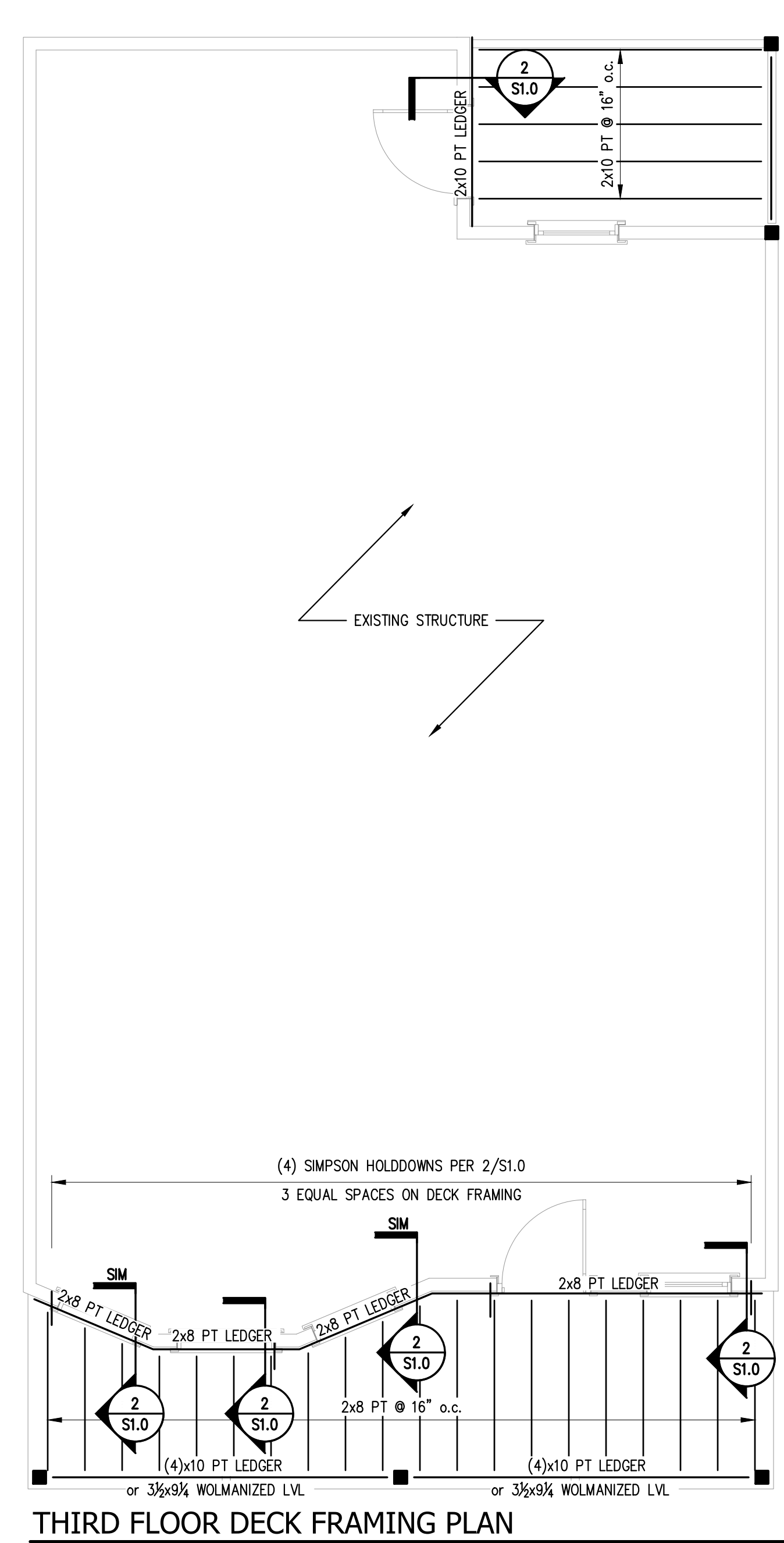
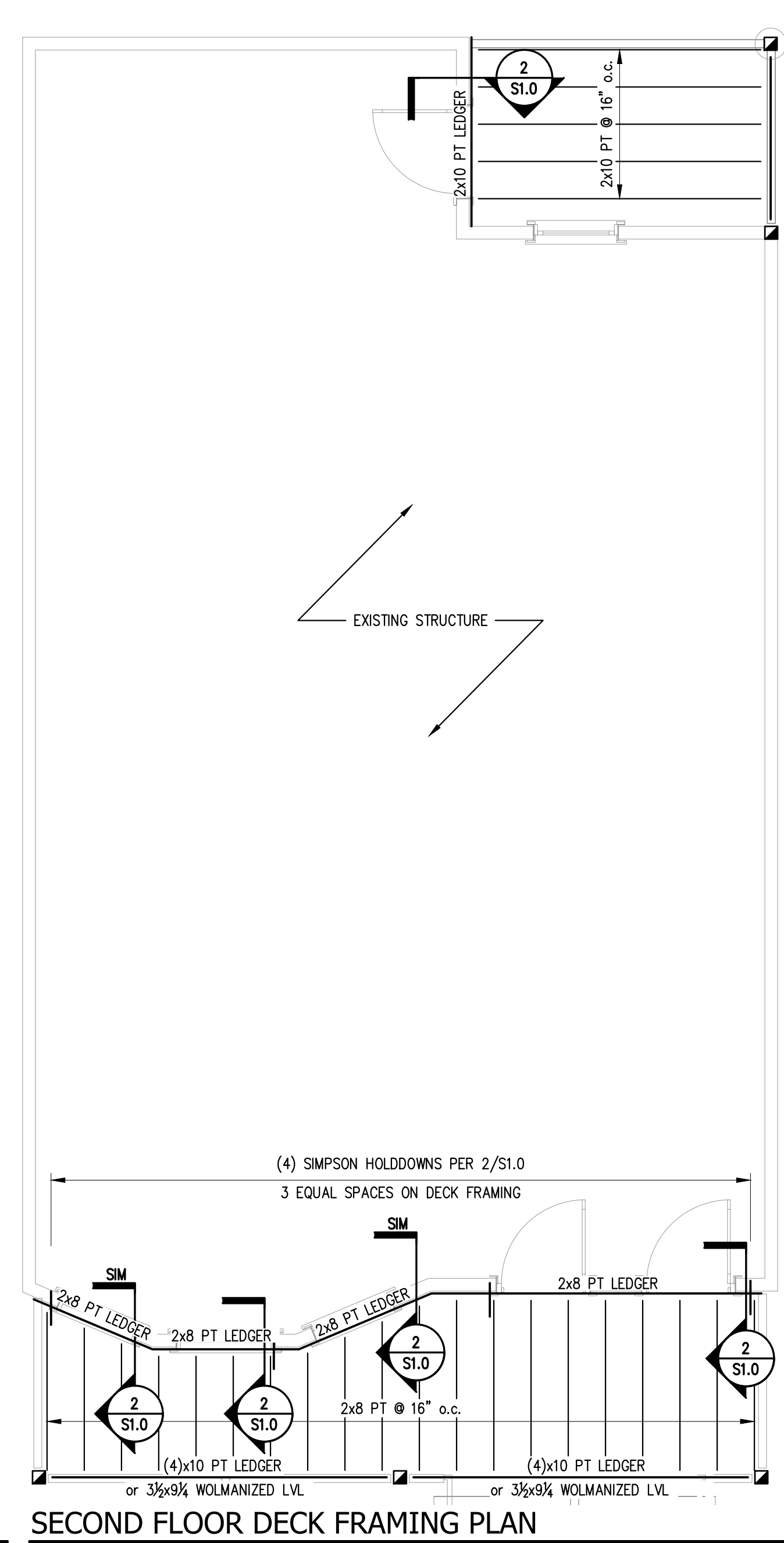
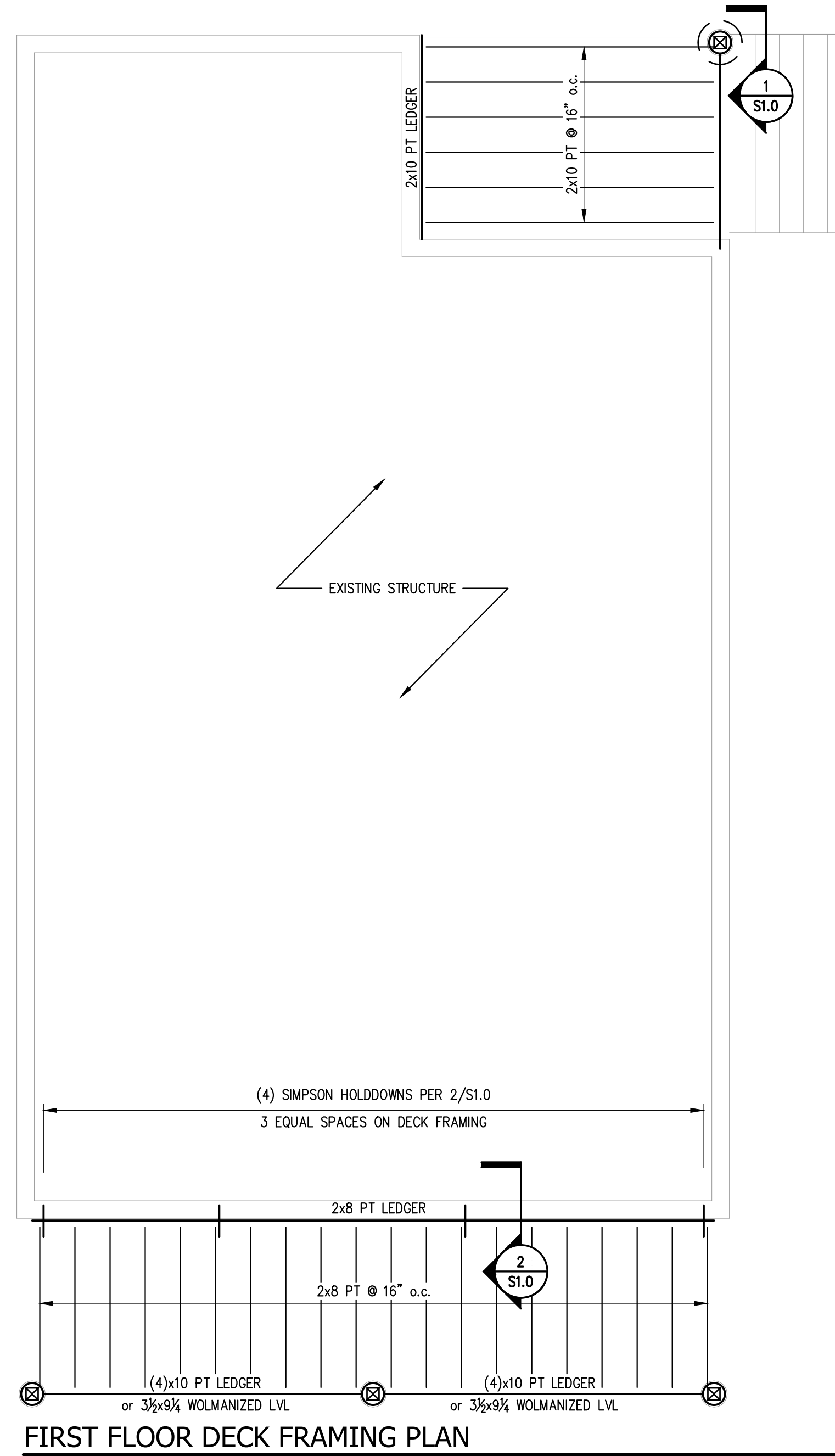
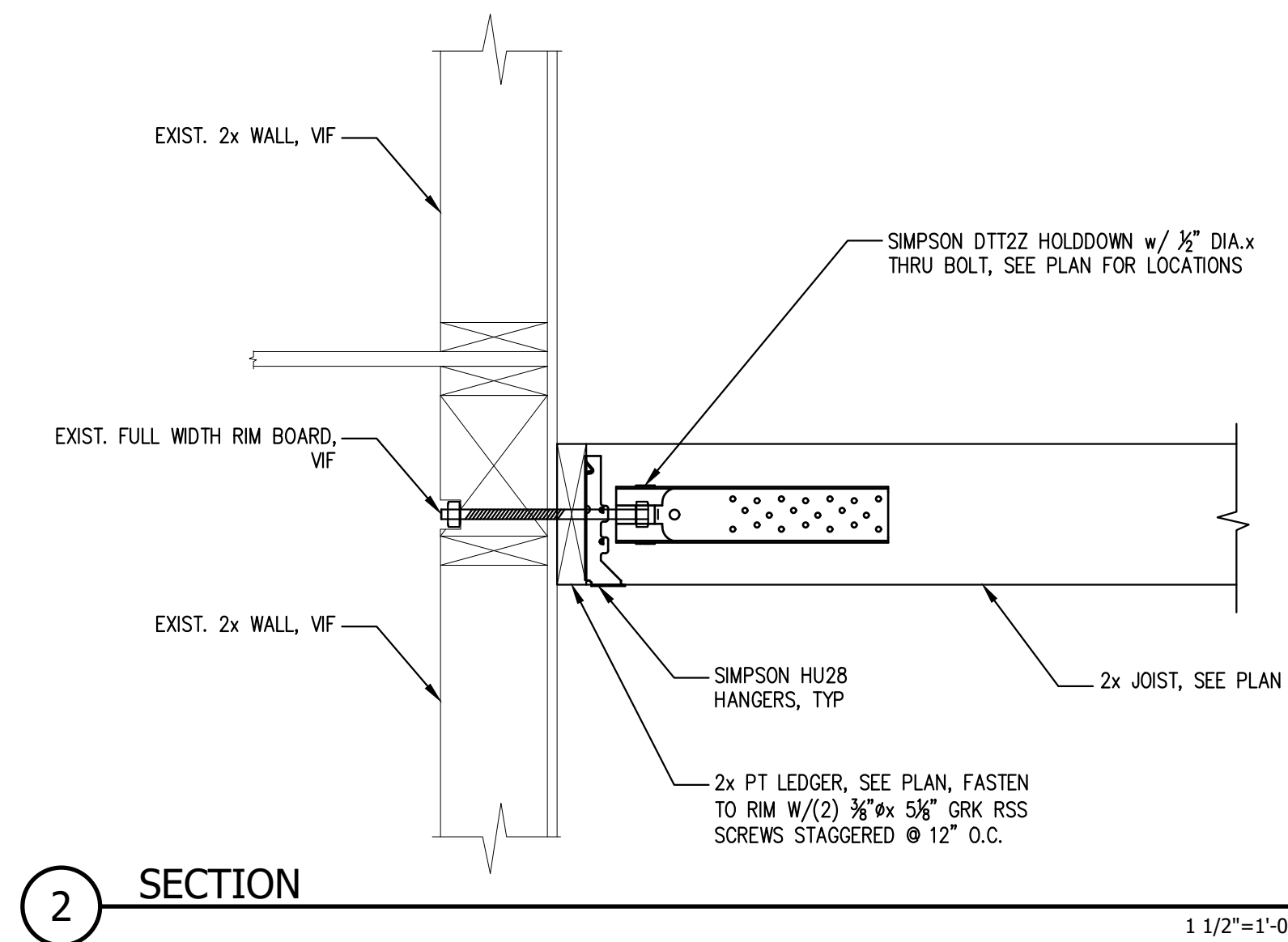
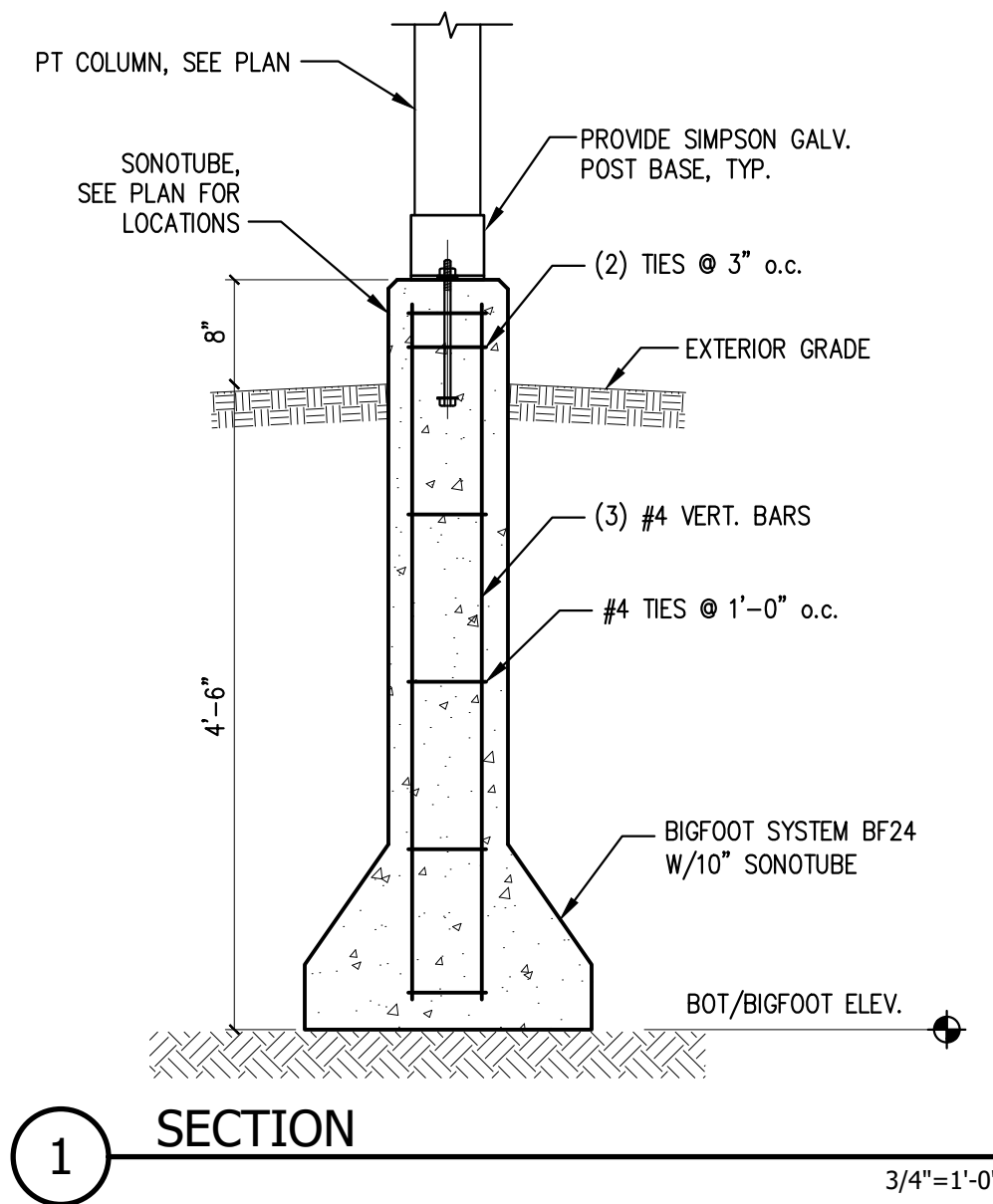
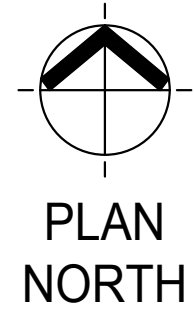


136 PLEASANT AVE.
 PORTLAND, ME 04103
 P 207.775.2696
 F 207.775.3631
 www.whipplecallender.com

MARK	DATE	DESCRIPTION

DATE: 11/5/18 - PERMIT
 CHECKED BY: JAD
 DRAWN BY: CLBC
 JOB: STE 2018
 SHEET TITLE: EXIST. DECK PLAN

A5.1



GENERAL NOTES:

- REFERENCE ARCHITECTURAL PLANS FOR DIMENSIONS NOT SHOWN. REFERENCE MECHANICAL, ELECTRICAL, AND ARCHITECTURAL PLANS FOR SIZES AND LOCATIONS OF WALL AND SLAB OPENINGS, DUCTS, PIPING, CURBS, AND EQUIPMENT PADS. IN THE EVENT OF A CONFLICT BETWEEN THE DRAWINGS, SPECIFICATIONS, OR NOTES ON THE DRAWINGS, THE ENGINEER SHALL BE NOTIFIED PRIOR TO CONSTRUCTION.
- EXISTING DIMENSIONS AND CONDITIONS ARE FOR REFERENCE ONLY. CONTRACTOR SHALL VERIFY ALL EXISTING CONSTRUCTION AND DIMENSIONS IN THE FIELD PRIOR TO CONSTRUCTION OR FABRICATION. ALL DISCREPANCIES SHALL BE REPORTED TO THE ENGINEER PRIOR TO COMMENCING WORK.
- THE CONTRACTOR SHALL NOTIFY THE ENGINEER IF DEVIATIONS OR CHANGES ARE REQUIRED TO THE CONTRACT DOCUMENTS OR APPROVED SHOP DRAWINGS DUE TO INTERFERENCES, FABRICATION ERRORS, OR OTHER CAUSES.
- THE STRUCTURE IS SELF-SUPPORTING AND STABLE AFTER THE ENTIRE BUILDING IS COMPLETELY CONSTRUCTED. THE CONTRACTOR IS SOLELY RESPONSIBLE FOR ERECTION PROCEDURES AND SEQUENCING DURING CONSTRUCTION AND ERECTION TO PROVIDE AND ENSURE LOCAL AND OVERALL STABILITY OF THE BUILDING AND ITS COMPONENTS DURING CONSTRUCTION AND ERECTION. THE CONTRACTOR SHALL RETAIN A LICENSED STRUCTURAL ENGINEER TO DESIGN TEMPORARY BRACING/SHORING AND DETERMINE WHERE THE TEMPORARY BRACING/SHORING IS NEEDED.
- THE CONTRACTOR SHALL BE RESPONSIBLE FOR ERECTION PROCEDURES, SEQUENCING AND FOR COMPLYING WITH ALL APPLICABLE SAFETY REGULATIONS DURING THE WORK.
- ONE ELECTRONIC COPY OR TWO SETS OF HARD COPIES OF SHOP DRAWINGS SHALL BE SUBMITTED TO THE ENGINEER. ONE HARD COPY WILL BE RETURNED TO THE CONTRACTOR AND ONE HARD COPY WILL BE RETAINED BY THE ENGINEER.
- REFERENCE THE PROJECT SPECIFICATIONS FOR MATERIAL, WORKMANSHIP AND ADDITIONAL INFORMATION NOT COVERED IN THESE NOTES (WHERE APPLICABLE)

DESIGN CRITERIA:

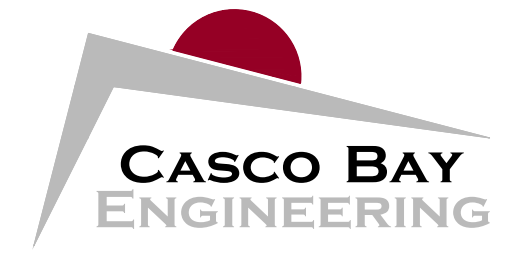
- BUILDING CODES:**
INTERNATIONAL BUILDING CODE (IBC), 2015 EDITION
ASCE 7-10 MINIMUM DESIGN LOADS FOR BUILDING AND OTHER STRUCTURES
MAINE UNIFORM BUILDING AND ENERGY CODE
- LIVE LOADS:**
ELEVATION FLOOR FRAMING = 40 PSF
EXTERIOR DECKS = 60 PSF
- SNOW LOADS:**
GROUND SNOW LOAD (Pg) = 60 PSF
SNOW EXPOSURE FACTOR (Ce) = 1.0
SNOW LOAD IMPORTANCE FACTOR (Is) = 1.0
THERMAL FACTOR (Ct) = 1.1
FLAT ROOF SNOW LOAD (P_f) = 47 PSF + DRIFT

WOOD NOTES:

- ALL TIMBER FRAMING SHALL BE IN ACCORDANCE WITH IBC 2015 REFERENCED EDITIONS OF THE AITC TIMBER CONSTRUCTION MANUAL AND AF&PA NATIONAL DESIGN SPECIFICATION FOR WOOD CONSTRUCTION (NDS).
- ALL FRAMING SHALL BE SPRUCE-PINE-FIR, No.2 OR BETTER U.N.O. AND HAVE A MAXIMUM MOISTURE CONTENT OF 19%.
- ALL WOOD IN CONTACT WITH MASONRY OR CONCRETE OR EXPOSED TO WEATHER SHALL BE PRESSURE TREATED (PT) SOUTHERN YELLOW PINE.
- WHERE "LVL" IS NOTED ON DRAWINGS, PROVIDE LAMINATED VENEER LUMBER, WHICH HAS THE FOLLOWING MINIMUM ALLOWABLE STRESSES:
F_b = 2600 PSI F_c = 2510 PSI (PARALLEL TO GRAIN)
F_v = 285 PSI F_c = 750 PSI (PERPENDICULAR TO GRAIN)
F_t = 1555 PSI E = 2,000,000 PSI
- WHERE "PSL" IS NOTED ON DRAWINGS, PROVIDE PARALLAM STRAND LUMBER, WHICH HAS THE FOLLOWING MINIMUM ALLOWABLE STRESSES:
F_b = 2900 PSI F_c = 2900 PSI (PARALLEL TO GRAIN)
F_v = 290 PSI F_c = 750 PSI (PERPENDICULAR TO GRAIN)
F_t = 2025 PSI E = 2,000,000 PSI
- ALL ENGINEERED LUMBER THAT IS EXPOSED TO WEATHER SHALL BE WOLMANIZED.
- ALL FLOOR SHEATHING SHALL BE 3/4" TONGUE AND GROOVE, GLUED AND NAILED TO FLOOR FRAMING WITH 8d RINK SHANK NAILS AT 6" o.c. AT SUPPORTED PANEL EDGES, 12" o.c. AT INTERMEDIATE SUPPORTS UNLESS NOTED OTHERWISE ON DRAWINGS.
- ALL ROOF SHEATHING (5/8") AND WALL SHEATHING (1/2") SHALL BE APA PERFORMANCE-RATED. ATTACH TO SUPPORTED PANEL EDGES WITH 8d NAILS AT 6" o.c. AND AT INTERMEDIATE SUPPORTS WITH 8d NAILS AT 12" o.c. U.N.O. SEE DRAWINGS FOR MORE STRINGENT NAILING REQUIREMENTS AT WOOD SHEAR WALLS.
- SHEATHING SHALL BE ORIENTED WITH LONG DIMENSION PERPENDICULAR TO THE SUPPORTS AND BE CONTINUOUS OVER TWO OR MORE SUPPORTS. STAGGER ALL JOINTS & PROVIDE ADEQUATE JOINT SPACING (1/8" TYP) AS RECOMMENDED BY MANUFACTURER.
- PROVIDE FULL DEPTH BLOCKING AT ENDS AND INTERIOR SUPPORTS OF ALL JOISTS AND RAFTERS WHERE JOISTS AND RAFTERS FRAME OVER SUPPORTS. PROVIDE 1x3 DIAGONAL BRIDGING OR FULL DEPTH SOLID BLOCKING FOR EACH 8'-0" OF SPAN FOR ALL JOISTS AND RAFTERS.
- WHERE BEAMS ARE LABELED ON PLAN, DO NOT SPLICE BEAM NOR ANY PLY OF BEAM BETWEEN SUPPORTS.
- ALL CONNECTION HARDWARE SHALL BE BY SIMPSON STONG-TIE (OR APPROVED EQUIVALENT) AND SHALL BE HOT-DIPPED GALVANIZED. HARDWARE IN CONTACT WITH PRESSURE TREATED (PT) LUMBER SHALL BE GALVANIZED G185 (ZMAX). REFER TO MANUFACTURERS LITERATURE FOR PROPER INSTALLATION GUIDELINES.
- FASTENERS USED IN CONTACT WITH PRESSURE TREATED (PT) LUMBER SHALL BE HOT-DIPPED GALVANIZED, STAINLESS STEEL, OR OTHER FINISH APPROVED BY ENGINEER.

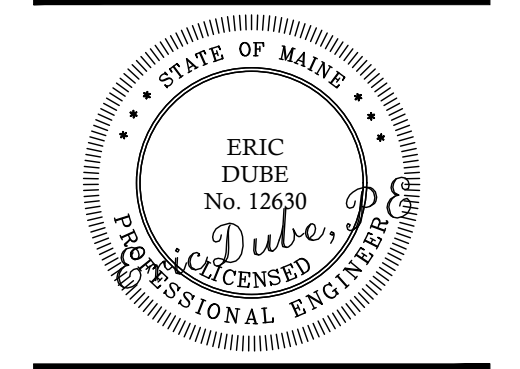
PLAN LEGEND

- BEARING WALL
- SHEAR WALL
- BEAM
- HSS COLUMN
- COLUMN FROM ABOVE
- COLUMN BELOW
- COLUMN ABOVE AND BELOW
- HOLD-DOWN



424 Fore Street
Portland, ME 04101
Phone 207.842.2800
Fax 207.842.2828
www.cascobayengineering.com

CLIENT:
Whipple Callender
Architects
136 Pleasant Ave.
Portland, ME 04103



Reviewed for Code Compliance
Permitting and Inspections Department
Approved with Conditions
11/05/2018

STEVENS AVE PORCH
548 Stevens Avenue
Portland, Me 04101

PROPOSED DECK

DR.	CHK.	DATE
BY	BY	10-19-18
ED	ED	

ISSUED	DESCRIPTION	DATE
ISSUED FOR PERMIT		

SHEET TITLE:
**DECK FOUNDATION
PLAN, FRAMING
PLANS, & DETAILS**

DESIGNED: ED
DRAWN:
DATE: 10-19-2018
PROJECT NUMBER: 18-068

S1.0

PRINTED: Oct 26, 2018

DECK PLANS AND SECTIONS

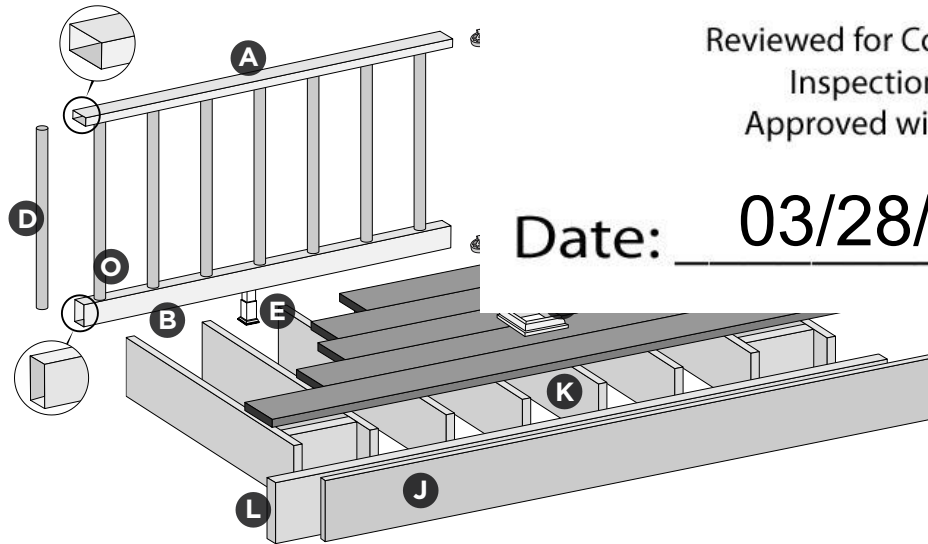
SCALE: VARIES

TREX SELECT® RAILING

Installation Instructions

NOTE : All Trex Select Railing lengths are manufactured at ON CENTER dimer (1.83 m) on center, and 92-5/8" (235.3 cm) for 8' (2.44 m) on center. Note the very slight play in post placement – trimming may be required. IT IS VERY IM

PARTS



- A. Select top rail
- B. Select bottom rail
- C. Brackets
- D. Balusters
- E. Adjustable footblock
- F. Post sleeve cap*
- G. Post sleeve skirt*
- H. Post sleeve – 4" x 4" (102 mm x 102 mm) or 6" x 6" (152 mm x 152 mm) post sleeve**
- I. Trex decking
- J. Trex fascia
- K. Code-approved wood joist – 2" x 8" (51 mm x 203 mm)
- L. Code-approved wood rim joist – 2" x 8" (51 mm x 203 mm) or larger

* Item not included in the Select railing kits.

** Both 4" x 4" (102 mm x 102 mm) and 6" x 6" (152 mm x 152 mm) post sleeves are designed to fit over 4x4 pressure-treated post.

NOTE: If installing 42" (1067 mm) railing, use longer post sleeves and measure accordingly to ensure a proper cut (**DO NOT CUT POST SLEEVES TO ACTUAL 42" – THESE NEED TO BE LONGER TO ALLOW FOR POST CAPS TO FIT**).

NOTE: Pictorial representations shown may only show one style of railing, while others may also be used. Review detailed instructions to determine what railing styles and combinations can be used.

DETERMINING BALUSTERS NEEDED

Baluster Type	Per 6' OC Section	Per 8' OC Section
Round Aluminum Baluster (Horizontal Application)	14	20
Round Aluminum Baluster (Stair Application)	12	17

CODE APPROVED APPLICATIONS

	6' Railing	8' Railing
<30" height decking	Acceptable (Code approval not applicable)	Acceptable (Code approval not applicable)
IRC Compliant	Yes	No
IBC Compliant	No	No

Reviewed for Code Compliance
Inspections Division
Approved with Conditions

Date: 03/28/18



Have Questions?
1-800-BUY-TREX

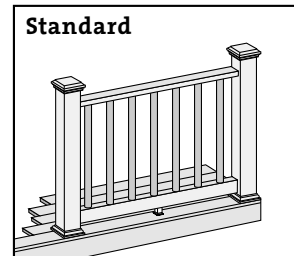
NOTE: Construction methods are always improving. Please ensure you have the most up-to-date installation instructions by visiting: trex.com

TSR-1016

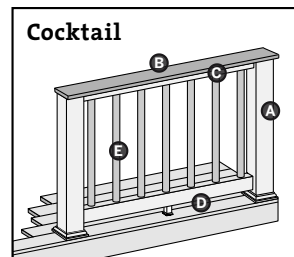
TREX SELECT® RAILING

Installation Instructions

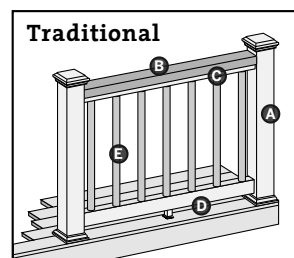
TREX SELECT RAILING CONFIGURATIONS



Cutting post sleeves is **NOT** rec
A. Pressure treated post or Trex
joist mount posts*
B. Select top rail
C. Select bottom rail
D. Select balusters
See page 8 for "How to Install St



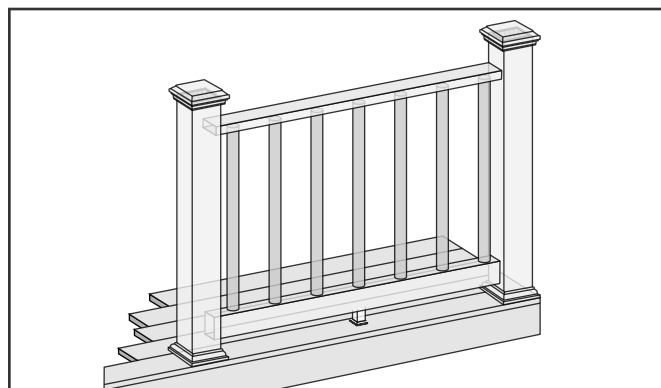
Post sleeves **WILL NEED TO BI**
A. Pressure-treated post with Tr
NOTE: » Only for use with
» Trex post mounts
cocktail design.
B. Deck board top rail.
NOTES: » Contour and Escapes cannot be used
» Deck boards will need to be cut to fit each rail span
C. Select top rail
D. Select bottom rail
E. Select balusters
See page 5 for "How to Install Select Cocktail Railing".



Cutting post sleeves is **NOT** required.
A. Pressure treated post or Trex post mounts* with Trex Transcend post sleeves, or Trex
joist mount posts*
B. 2" x 4" (51 mm x 102 mm) lateral top rail
C. Select top rail
D. Select bottom rail
E. Select balusters
See page 6 for "How to Install Traditional Railing".

*See specific installation instructions for attachment of Trex post mounts or Trex Joist Mount Posts prior to installing any railing.

HOW TO INSTALL TREX SELECT STANDARD RAILING TREX SELECT



2

Have Questions?
1-800-BUY-TREX

NOTE: Construction methods are always improving. Please ensure you
have the most up-to-date installation instructions by visiting: trex.com

TSR-1016



Reviewed for Code Compliance
Inspections Division
Approved with Conditions

Date: 03/28/18



Reviewed for Code Compliance
 Permitting and Inspections Department
 Approved with Conditions

11/05/2018

Reviewed for Code Compliance
 Inspections Division
 Approved with Conditions

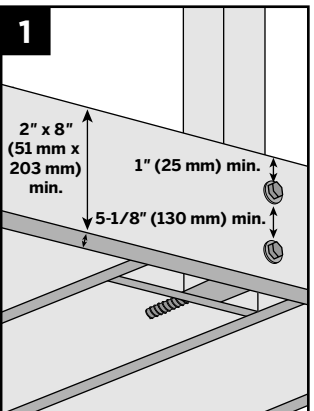
Date: 03/28/18

HOW TO INSTALL TREX SELECT STA TREX SELECT

Installing Pressure-Treated Posts

» Select Railing Kits are designed for posts to be installed at maximum of 6' or 8' (1.83 m or 2.44 m) ON CENTER depending on the length being used. (NOTE: Smaller spans are allowed).

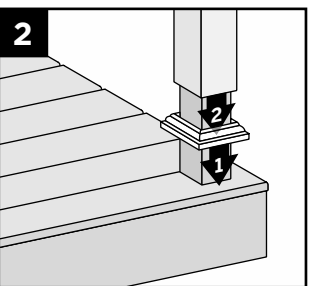
- » Attach posts using 1/2" (13 mm) carriage bolts.
- » Minimum joist size is 2" x 8" (51 mm x 203 mm).
- » Topbolts must be 1" (25 mm) from tops of joists.
- » Bottombolts must be 5-1/8" (130 mm) from top bolts.



NOTE: Blocking **MUST** be added for extra strength.

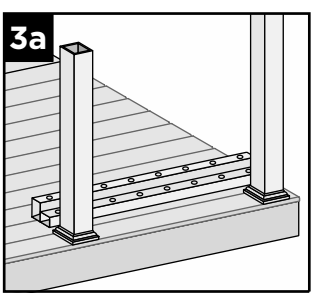
Installing Post Sleeve Skirts and Post Sleeves

2. Slide post sleeve skirt over post and down to rest on decking surface. Slide post sleeve over post and position inside post sleeve skirt.

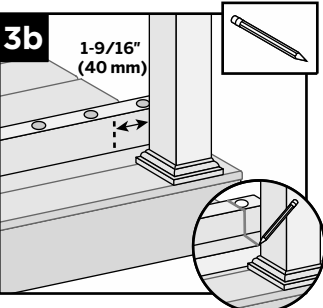


NOTE: Shims can be used to plumb post sleeves.

Cutting Railings



- 3a. Position bottom and top rails between posts, ensuring baluster holes are lined up and spaced evenly.



- 3b. Also allow for a minimum of 1-9/16" (40 mm) on each end of rail for bracket placement AND baluster clearance. Mark rails at intersection of rail and post.

» Determine whether type of foot block is included.

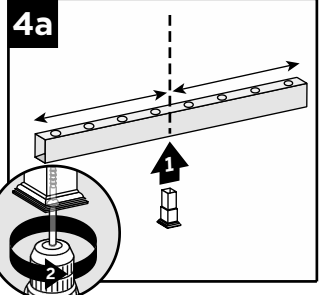


Original foot block is a one-piece part that is adjustable. New foot block is a two-piece part with turning base mount.

- » Also refer to detailed instructions (Trex Select® rail instructions) included with foot block prior to installation of railing section as these include other required steps for proper installation.

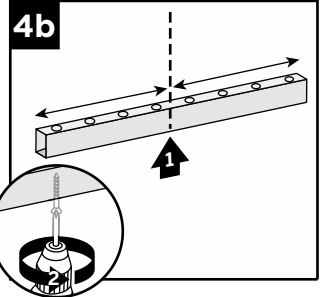
If Attaching Original Foot Block to Bottom Rail

- 4a. Invert the bottom railing. Center foot block on the bottom rail and attach per Original FootBlock instructions.



If Attaching New Foot Block to Bottom Rail

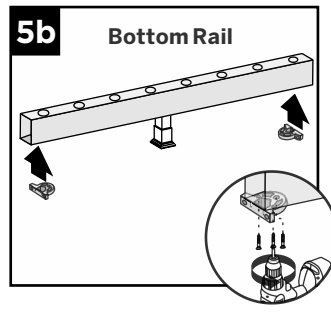
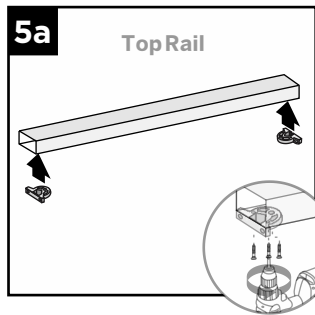
- 4b. Invert the bottom rail. Center and drill a hole using a 3/16" drill bit. This will be location for foot block attachment (to be installed last).



TREX SELECT® RAILING

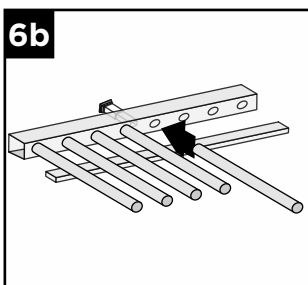
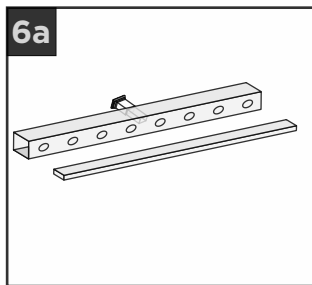
Installation Instructions

HOW TO INSTALL TREX SELECT STA TREX SELECT



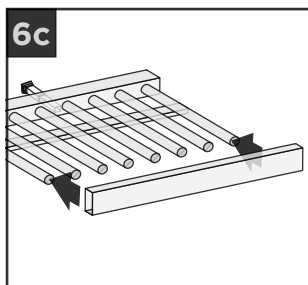
Attaching Brackets to Rails

- 5a. Position brackets on each end of TOPRAIL on the same side as baluster holes. Attach brackets using three #8-18 x 1" self-drilling screws (*provided*).
- 5b. Position brackets on each end of BOTTOM RAIL on the **OPPOSITE SIDE** of the baluster holes. Attach brackets using three #8-18 x 1" self-drilling screws (*provided*).



Assembling Railing Section

- 6a. On a clean flat surface lay bottom railing on its side. Make sure to allow enough room for installation of balusters and top rail. Place a scrap piece of 1" decking board running parallel to bottom rail for support when installing balusters.
- 6b. Insert balusters into bottom rail slots until balusters are fully seated.
- 6c. Attach top rail to balusters, feeding each baluster into required slots. Start on one end and work towards the other.



4

Have Questions?
1-800-BUY-TREX

NOTE: Construction methods are always improving. Please ensure you have the most up-to-date installation instructions by visiting: trex.com

TSR-1016



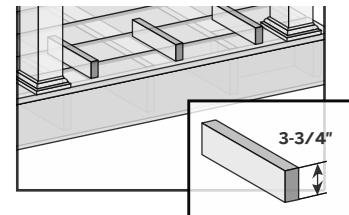
Reviewed for Code Compliance
Permitting and Inspections Department
Approved with Conditions

11/05/2018

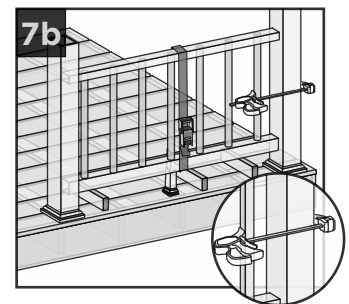
Reviewed for Code Compliance
Inspections Division
Approved with Conditions

Date: 03/28/18

(Use 1x4, decking boards, etc.) cut at least three support blocks at 3-3/4" in height. Place one each on decking surface beside each post and one near center of span.

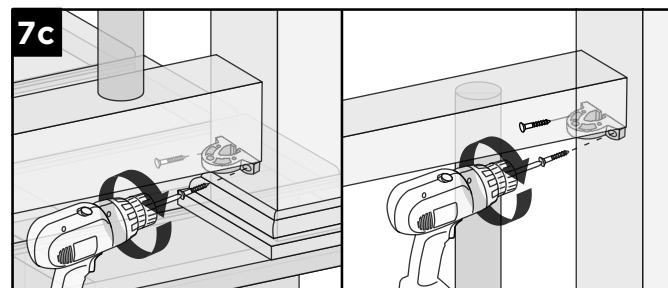


- 7b. Lift secured railing section up, and **CENTER** this section in between the spanned posts on pre-positioned support blocks.



NOTE: To help stabilize railing section use a quick-grip clamp (or other type of clamp) and clamp the first baluster to post sleeve. (**DO NOT OVERTIGHTEN CLAMP.**)

- 7c. Install both bottom and top brackets on each side to post using two #8-10x2" wood screws (*provided*). For best results, set drill to low speed when





Reviewed for Code Compliance
 Permitting and Inspections Department
 Approved with Conditions

11/05/2018

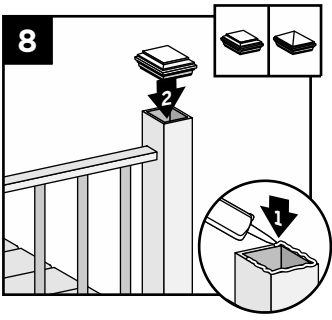
Reviewed for Code Compliance
 Inspections Division
 Approved with Conditions

HOW TO INSTALL TREX SELECT STA TREX SELECT

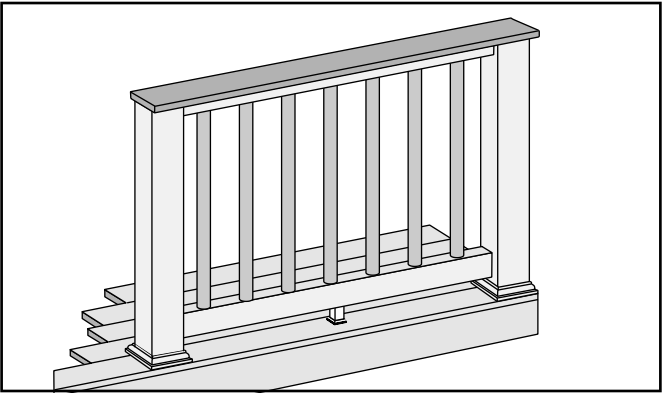
installing these screws.

Attaching Post Caps and Installing New Foot Block

8. Secure post caps with silicone or PVC adhesive. Attach new footblock per footblock instructions.



HOW TO INSTALL COCKTAIL RAILING TREX SELECT



Date: 03/28/18

4. **Cutting Railings**
 See instructions on page 3.
5. **Attaching Foot Block to Bottom Railing**
 See instructions on page 3.

NOTES:

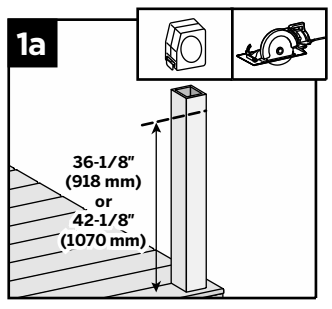
- » If installing in weather below 40°F (4.5°C), leave 1/8" (3 mm) gap between deck boards.
- » Deck boards can overhang end of last post maximum 1/2" (13 mm).

Important: ONLY use for use with pressure treated 4x4 post (3.5" nominal square) and 4" x 4" (102 mm x 102 mm) post sleeve. TrexPost Mounts or Joist Mount Posts cannot be used with Select Cocktail railing.

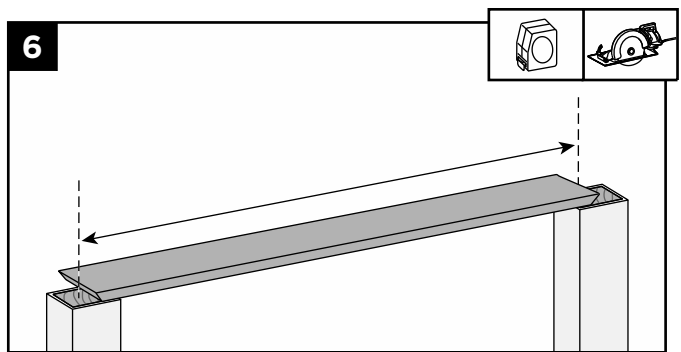
1. **Installing Pressure-Treated Posts, Post Sleeve Skirts and Post Sleeves**
 See instructions on page 3.

Cutting Post and Post Sleeve

- 1a. Mark and cut post and post sleeve measuring from deck surface:
 - » 36-1/8" (918 mm) for 36" (914 mm) height.
 - » 42-1/8" (1070 mm) for 42" (1067 mm) height.



Cutting Deck Board



6. Cut deck boards to appropriate length of railing span, remembering to include extra space on each side of the deck board to allow for attachment to the post. Decking boards must cover 1/2 of the pressure-treated post to allow this to be fastened later.

5

Have Questions?
 1-800-BUY-TREX

NOTE: Construction methods are always improving. Please ensure you have the most up-to-date installation instructions by visiting: trex.com

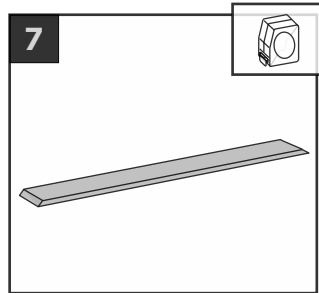
TSR-1016

TREX SELECT® RAILING

Installation Instructions

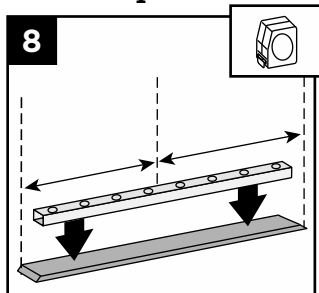
HOW TO INSTALL COCKTAIL RAILING TREX SELECT

7. Place inverted deck board (place top side of deck board down) on clean, flat surface. (**DO NOT** use Escapes, or Contour deck boards for top rail.)



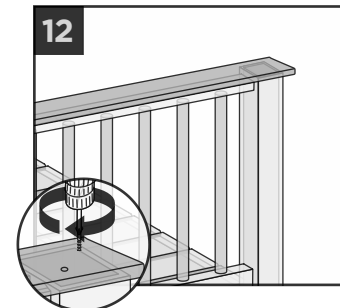
Attaching Deck Board to Select Top Rail

8. Place inverted Select top rail (orient properly so baluster holes are shown top side up), on the deck board, centered in both directions to allow final attachment to post.

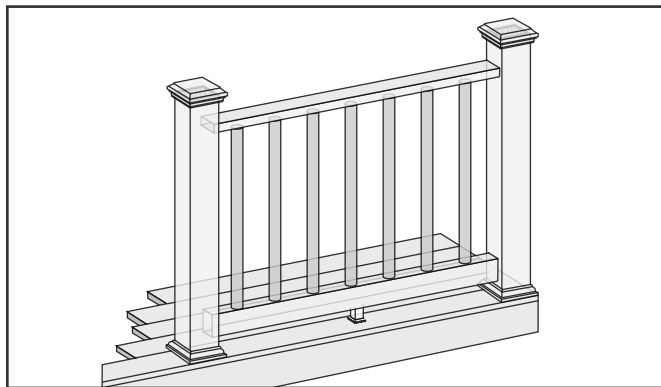


11. **Installing Railing Sections to Posts**
See instructions on page 4.

12. **Attaching Deck Board to Posts**
Attach boards on each post with Trex recommended composite screws (quantity of 2 per each board end).



HOW TO INSTALL TREX TRADITIONAL RAILING TREX SELECT



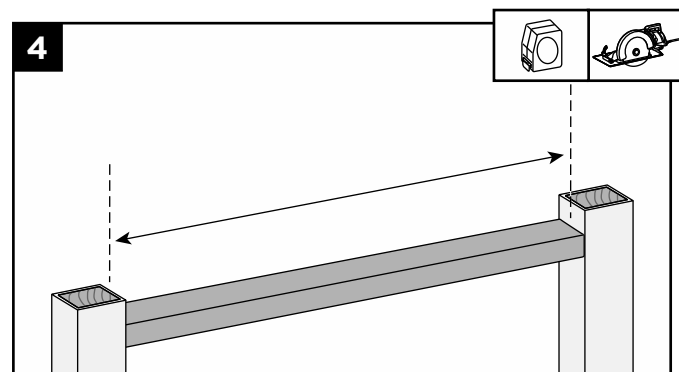
1. **Installing Pressure-Treated Posts, Post Sleeve Skirts and Post Sleeves**
See instructions on page 2.

2. **Attaching Foot Block to Bottom Railing**
See instructions on page 2.

6

3. **Cutting Railings**
See instructions on page 3.

Cutting 2" x 4"

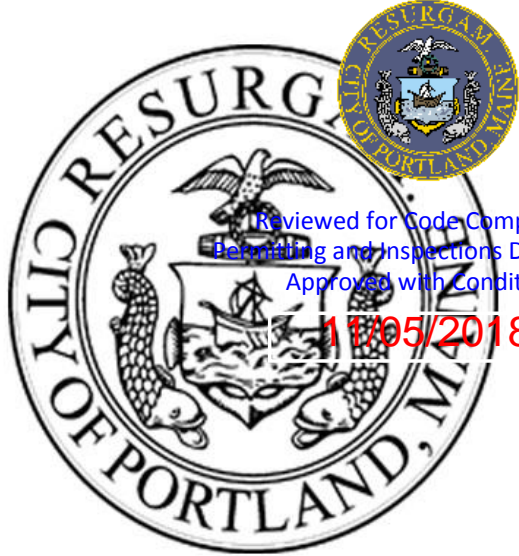


4. Cut 2" x 4" (51 mm x 102 mm) to same length of the inverted Select top rail.

Have Questions?
1-800-BUY-TREX

NOTE: Construction methods are always improving. Please ensure you have the most up-to-date installation instructions by visiting: trex.com

TSR-1016



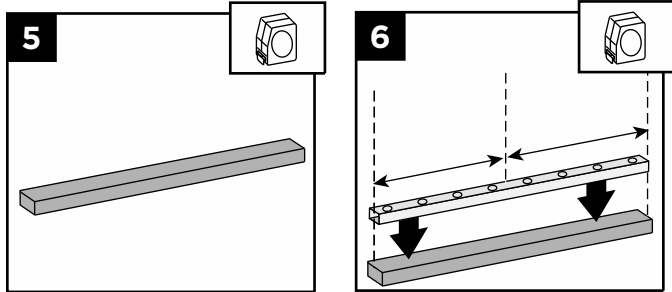
Reviewed for Code Compliance
 Building and Inspections Department
 Approved with Conditions

11/05/2018

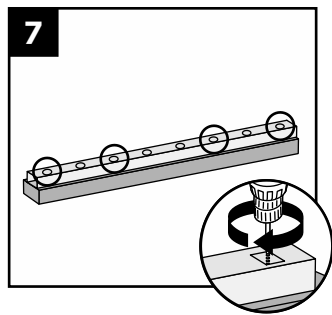
Reviewed for Code Compliance
 Inspections Division
 Approved with Conditions

HOW TO INSTALL TREX TRADITION/ TREX SELECT

Attaching 2" x 4" to Select Top Rail



5. Place inverted 2" x 4" (51 mm x 102 mm) (place topside down) on clean, flat surface.
6. Place inverted Select top (orient properly so baluster holes are shown top side up) on 2" x 4" (51 mm x 102 mm).
7. Secure 2" x 4" (51 mm x 102 mm) to Select top rail with 3/4" screw provided approx. every 16" on center. Screws are to be installed inside of the baluster holes into the decking board. **DO NOT** overtighten. Note that a long drill bit will be required to fit inside the baluster holes.

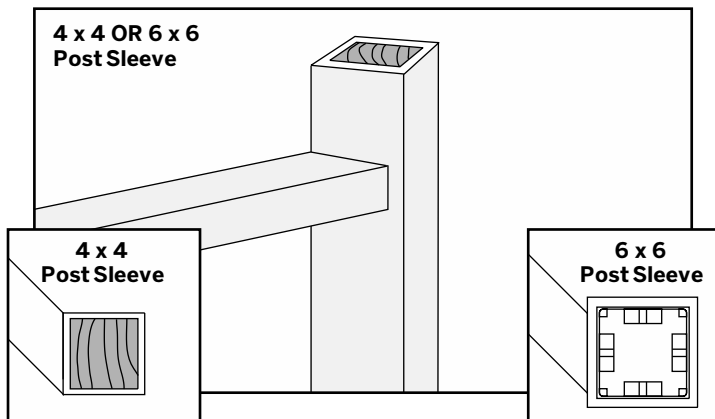


Date: 03/28/18

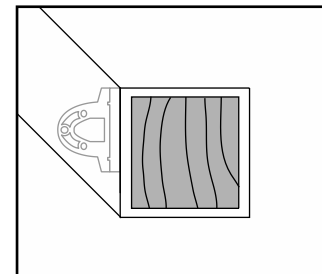
11. **Attaching Post Caps and Installing New Foot Block**
 See instructions on page 5.

HOW TO INSTALL ON-AN-ANGLE RAILING TREX SELECT

NOTE: Brackets are designed to be installed up to a 45° angle.



Both 4" x 4" (102 mm x 102 mm) or 6" x 6" (152 mm x 152 mm) post sleeves work well for angles up to 45 degrees. Bottom rail brackets may need to be slightly off set to one side in order to fit properly to hold rail in place. Measure and mark first before attachment of bracket to rail to ensure bottom rail remains parallel to upper rail.



Have Questions?
 1-800-BUY-TREX

NOTE: Construction methods are always improving. Please ensure you have the most up-to-date installation instructions by visiting: trex.com

TSR-1016

TREX SELECT® RAILING

Installation Instructions

HOW TO INSTALL TREX SELECT STAIR RAILING

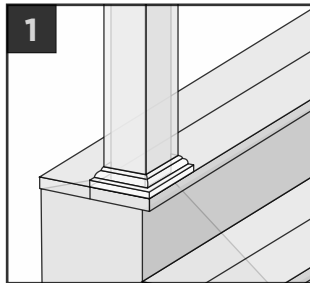
Read all instructions **BEFORE** installation.

IMPORTANT NOTE: POST TO POST SPAN WILL BE LESS THAN 6'. PRIOR TO INSTALLING POSTS CALCULATE POST TO POST SPAN USING A MAXIMUM RAIL LENGTH OF 6' AND THE ANGLE (32°-37°) AT WHICH THE RAILS WILL BE INSTALLED. DO NOT INSTALL STAIR POSTS AT 6' SPAN, AS STAIR RAILINGS WILL THEN BE TOO SHORT.

NOTE: All Select railings work ONLY WITH STAIR SLOPES OF 32° TO 37°.

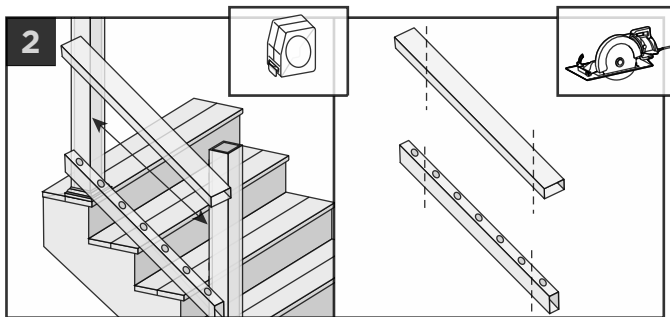
Installing Posts, Post Sleeve Skirts, and Post Sleeves for Stair Rails

1. Install posts, post sleeve skirts, and post sleeves according to standard Select railing instructions.



- » In most cases, a post and post sleeve longer than 39" (991 mm) will be needed on the lower section of stair rail to accommodate stair angle.
- » Make sure top and bottom posts for stairs are installed at nose of each tread.

Measuring and Cutting Railings



2. Set railing along the nose of the stair treads, making sure baluster holes are vertically aligned and mark line at each intersection. **When measuring, cut equal lengths from each side of railing allowing a minimum of 2" on each end from the last baluster hole to the end of the rail.** This will ensure proper baluster and bracket placement and equal spacing of balusters per each railing section.

8

Have Questions?
1-800-BUY-TREX

NOTE: Construction methods are always improving. Please ensure you have the most up-to-date installation instructions by visiting: trex.com

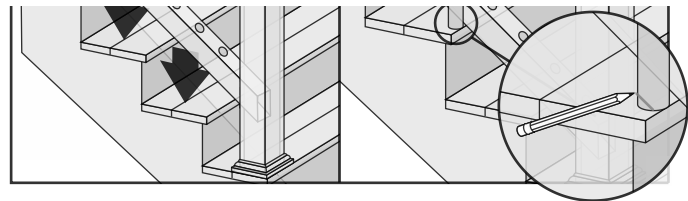


Reviewed for Code Compliance
Permitting and Inspections Department
Approved with Conditions

11/05/2018

Reviewed for Code Compliance
Inspections Division
Approved with Conditions

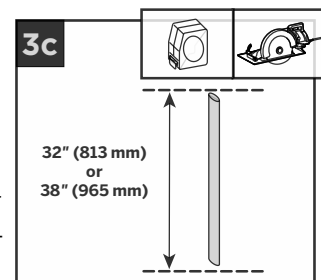
Date: 03/28/18



- 3b. Set bottom railing on nose of stair treads and set baluster at 90° on the outside of the railing, mark and measure the angle.

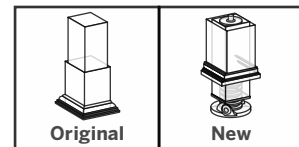
NOTE: Measure, mark, and cut a scrap board to ensure you have proper angle **BEFORE** cutting balusters on angle.

- 3c. Cut the **VERY END** of baluster, both top and bottom, making sure that point to point measurement of the baluster remains at either 32" (813 mm) for 36" (914 mm) rail heights or 38" (965 mm) for 42" (1067 mm) rail heights.



IMPORTANT NOTE REGARDING FOOT BLOCK INSTALLATION:

- » Determine which style of foot block is included. Original foot block is a one-piece part that is adjustable. New foot block is a two-piece part with turning base mount.
- » Also refer to detailed instructions (Trex Select rail instructions) included with foot block prior to installation of railing section as these include other required steps for proper installation.



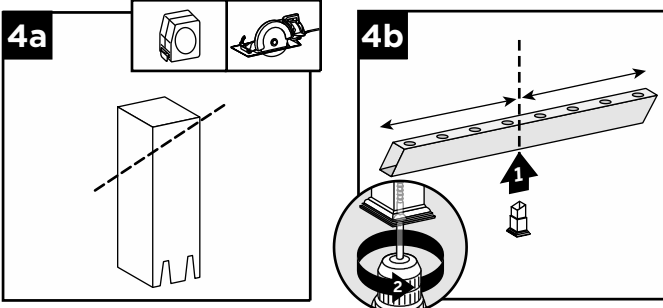


Reviewed for Code Compliance
 Permitting and Inspections Department
 Approved with Conditions

11/05/2018

HOW TO INSTALL TREX SELECT STAIR RAILING

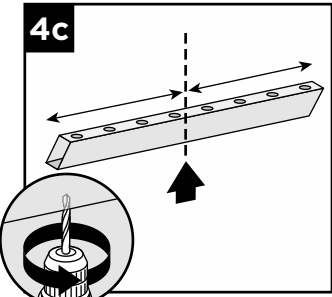
If Attaching Original Foot Block to Bottom Rail



- 4a. For stair applications, cut the section of footblock at an angle to match rail. Refer to foot block instructions for specific information on how to do this.
- 4b. Invert bottom rail. Center foot block on bottom rail and attach at marked position per Original foot block instructions. **DO NOT** extend foot block.

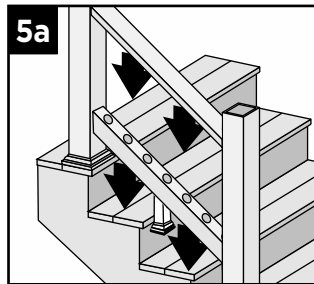
If Attaching New Foot Block to Bottom Stair Rail

- 4c. Invert the bottom stair rail. Center and drill a hole using a 3/16" drill bit. This will be location for footblock (to be installed last).



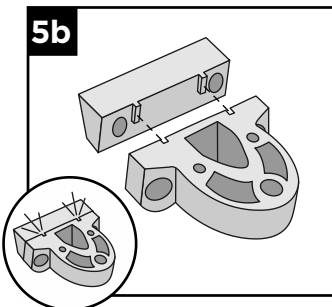
Attachment of Brackets to Railings

- 5a. Check fit for both top and bottom railings in designated positions for location onto posts. Remove railings.



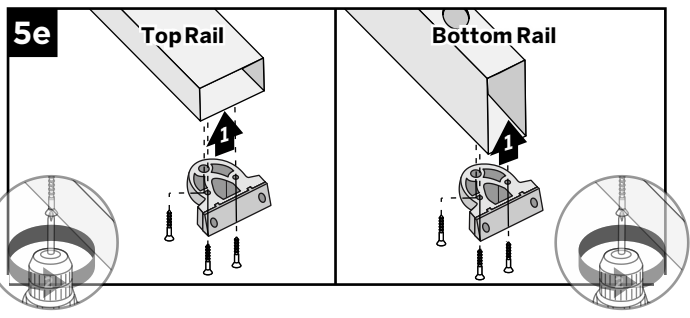
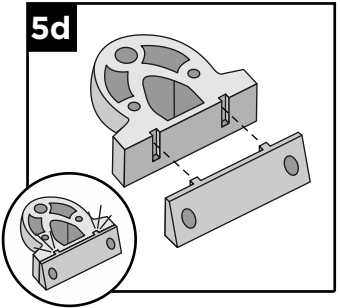
Upper Stair Post Locations

- 5b. Snap the top stair adaptor bracket (labeled TOP) to the standard bracket. Repeat for remaining bracket.



Lower Stair Post Locations

- 5d. Snap the bottom stair adaptor bracket (labeled BOTTOM) to the standard bracket. Repeat for remaining bracket.



- 5e. On the TOP RAIL, attach the assembled bottom stair bracket to the side with baluster holes. On the BOTTOM RAIL, attach the assembled bottom stair bracket to the OPPOSITE SIDE of the baluster holes. Attach both brackets using three #8-18x1" self-drillingscrews (provided).

Reviewed for Code Compliance
 Inspections Division
 Approved with Conditions

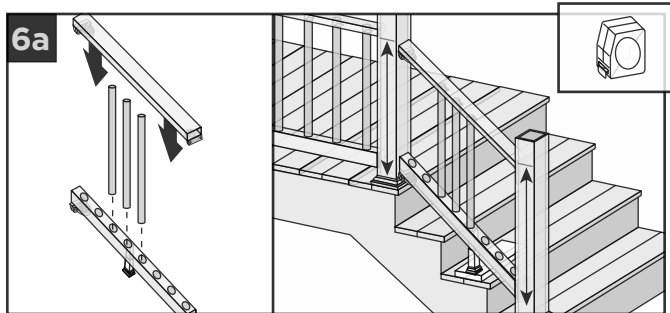
Date: 03/28/18

TREX SELECT® RAILING

Installation Instructions

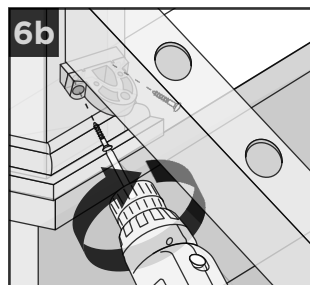
HOW TO INSTALL TREX SELECT STAIR RAILING

Attachment of Bottom Rail to Post

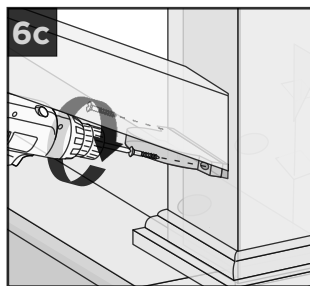


6a. Assemble a few of the balusters into the bottom and top railings (make sure balusters are setting at 90°) and set this on scrap material clearing the stair treads to determine where bracket locations need to be. Measure to make sure that the bottom railing will clear the stair treads and the top railing will be aligned with horizontal railing (remember in most cases, a longer post and post sleeve will be needed on the lower section of stair rail to accommodate stair angle).

6b. After locating appropriate position for bottom rail remove top rail and balusters and attach bottom rail stair bracket to upper post using two #8-10x3" wood screws (*provided*).

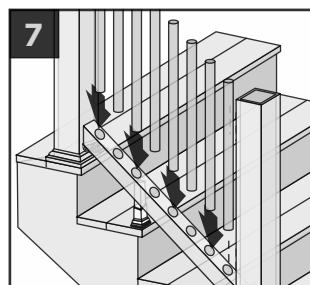


6c. Attach bottom stair rail stair bracket to lower post using two #8-10x3" wood screws (*provided*). For best results set drill to low speed when installing these screws.



Install Balusters

7. Slide balusters into bottom rail until balusters are fully seated.

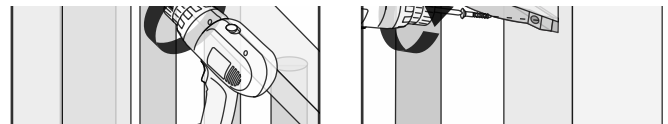


Reviewed for Code Compliance
Building and Inspections Department
Approved with Conditions

11/05/2018

Reviewed for Code Compliance
Inspections Division
Approved with Conditions

Date: 03/28/18

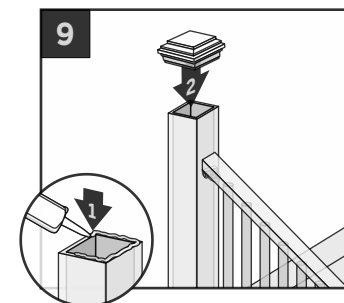


8b. Attach top stair rail bracket to upper post using two #8-10x3" screws (*provided*). For best results set drill to low speed when installing these screws.

8c. Attach top stair rail bracket to lower post using two #8-10x3" screws (*provided*). For best results set drill to low speed when installing these screws.

Attaching Post Caps and Installing New Foot Block

9. Secure post caps with silicone or PVC adhesive. Attach new foot block per foot block instructions.



NOTE: Clean-up any excess adhesive before drying.

10

Have Questions?
1-800-BUY-TREX

NOTE: Construction methods are always improving. Please ensure you have the most up-to-date installation instructions by visiting: trex.com

TSR-1016



Reviewed for Code Compliance
Permitting and Inspections Department
Approved with Conditions

11/05/2018

NOTES

Horizontal lines for notes, starting with 10 lines and continuing down the page.

Reviewed for Code Compliance
Inspections Division
Approved with Conditions

Date: 03/28/18

Horizontal lines for notes, continuing from the 'NOTES' section.



Reviewed for Code Compliance
Permitting and Inspections Department
Approved with Conditions

11/05/2018

Reviewed for Code Compliance
Inspections Division
Approved with Conditions

Date: 03/28/18

