

prestige

Solo 110

Water Boiler



* INSTALLATION AND MAINTENANCE * M A N U A L

NOTICE

Warranty Registration Card must be filled out by the customer and mailed within thirty (30) days of installation in order to gain warranty coverage.

When receiving the PRESTIGE Solo unit, any claims for damage or shortage in shipment must be filed immediately against the transportation company by the consignee.

Leave all documentation received with appliance with owner for future reference.

WARNING

If the information in this manual is not followed exactly, a fire or explosion may result causing property damage, personal injury or death.

FOR YOUR SAFETY

- Do not store or use gasoline or other flammable vapors and liquids in the vicinity of this or any other appliance.
- WHAT TO DO IF YOU SMELL GAS
 - Do not try to light any appliance
 - Do not touch any electrical switch; do not use any phone in your building.
 - Immediately call your gas supplier from a neighbor's phone. Follow the gas supplier's instructions.
 - If you cannot reach your gas supplier, call the fire department.

Installation and service must be performed by a qualified installer, service agency or the gas supplier.

Product Specifications



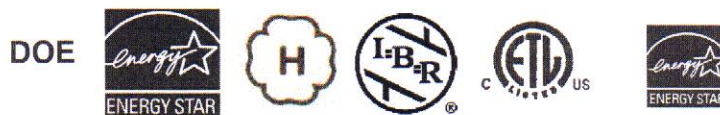
| Boiler Model | Fuel | DOE Heating Capacity Note 1 & 4 | Input Note 4 | Net IBR Rating Note 2 | DOE Seasonal Efficiency AFUE Note 3 | Shipping Weight Lbs/Kg |
|--------------|---------|------------------------------------|-----------------|-----------------------------|---|------------------------------|
| SOLO 110 | Natural | 99,000 | 110,000 | 86,000 | 95% | 106/48 |
| SOLO 110 | Propane | 87,000 | 97,000 | 76,000 | 95% | 106/48 |

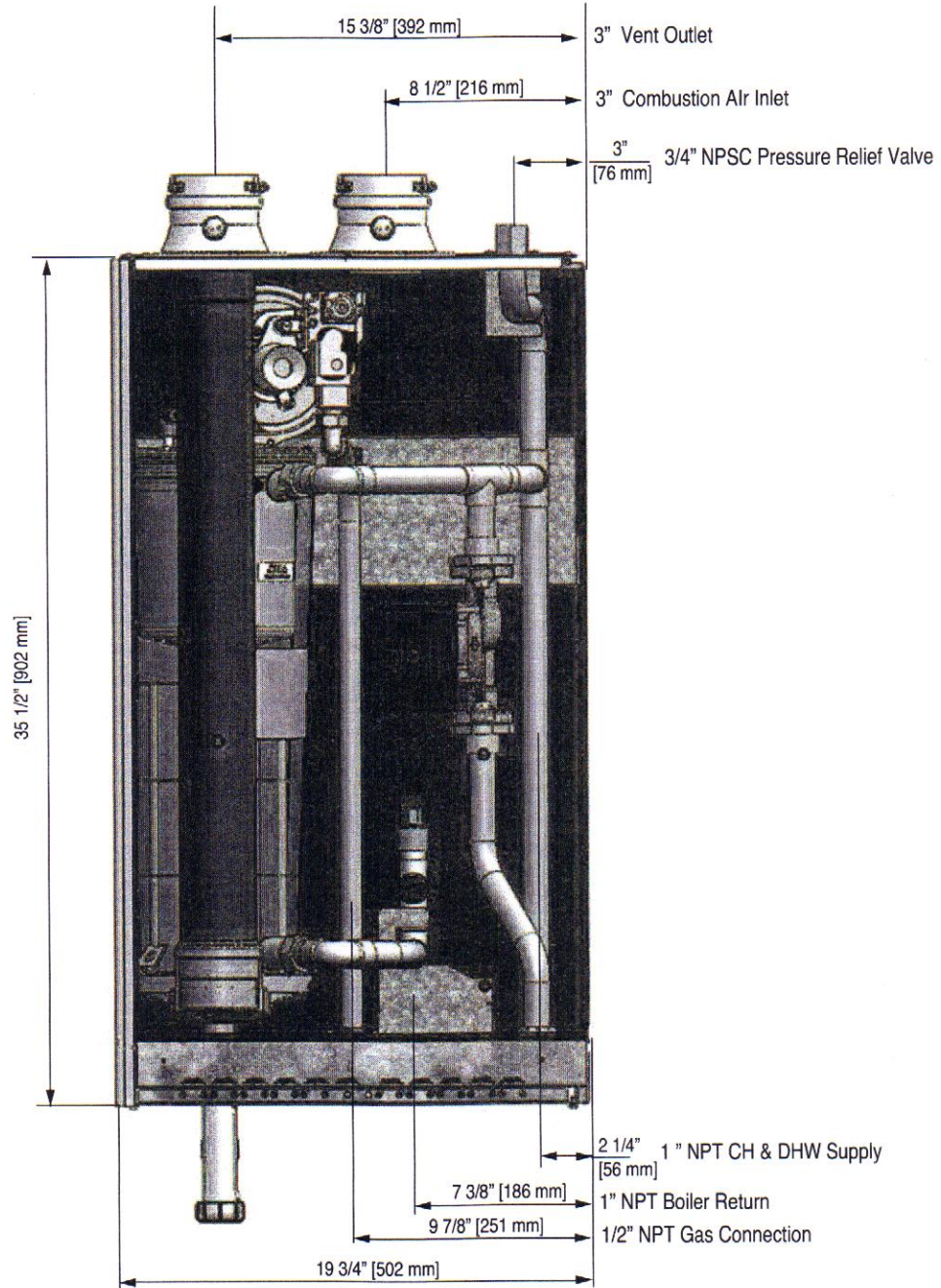
Note 1: The heating capacity of the PRESTIGE Solo 110 is based on the test requirements of the U.S. Department of Energy.

Note 2: The IBR rating is based on a piping and pick up allowance of 1.15. This allowance should be sufficient for the standard radiation requirements for a building load.

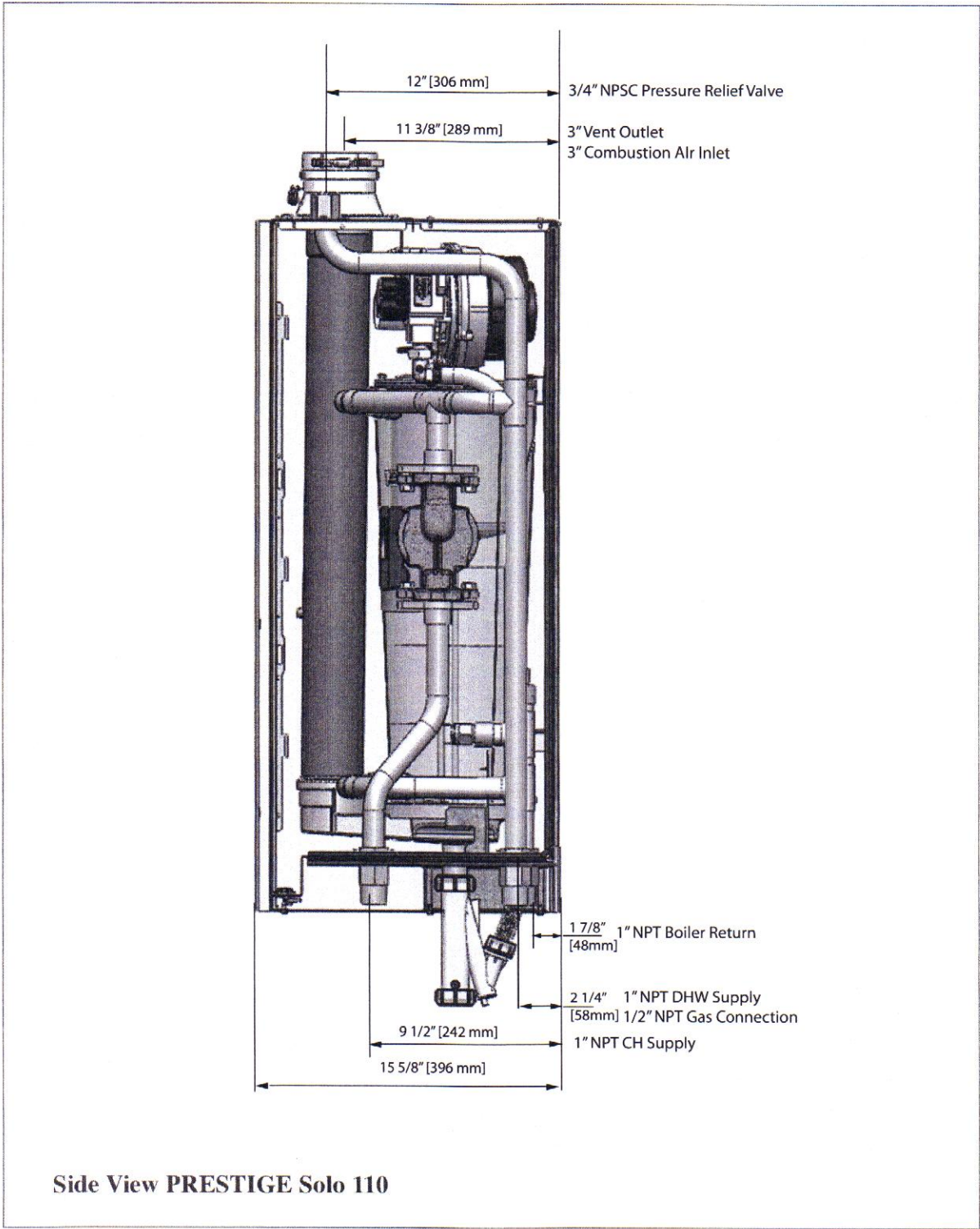
Note 3: Based on the given AFUE the PRESTIGE Solo 110 meets the energy efficiency guidelines established by Energy Star.

Note 4: Input and output ratings are shown for sea level applications. The PRESTIGE Solo automatically derates the input at approximately 2% for every 1,000 Ft. of altitude. No alterations to the boiler or burner system is required.

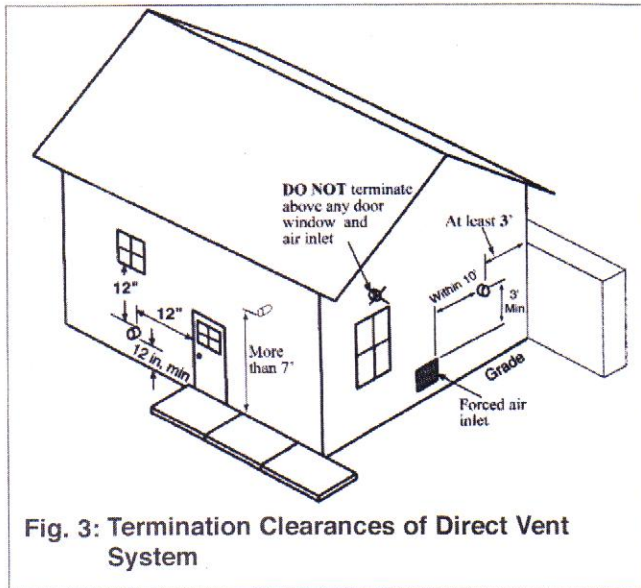




Front View PRESTIGE Solo 110



- f. Locate the vent termination to prevent possible condensate damage to exterior finishes.
 - g. Avoid locations of possible accidental contact of flue vapors with people or pets.
6. The vent termination must also maintain the following clearances; as shown in Fig.3.
- a. At least 3 feet from adjacent walls
 - b. At least 3 feet below roof over hangs
 - c. At least 7 feet above any public walkways
 - d. At least 3 feet above any forced air intake within 10 feet (does not apply to the combustion air inlet of a direct vent appliance).
 - e. No closer than 12" below or horizontally from any door or window or gravity air inlet.
 - f. Must be at least 4 feet from any electric meters, gas meters-regulators, relief valves or other equipment. Never terminate the vent above or below any of these items within 4 feet horizontally.



7. Locate the vent and combustion air terminations in a manner to protect from damage by foreign objects, such as stones, balls, or buildup of leaves or sediment.
8. Do not connect any other appliance to the vent pipe or multiple boilers to a common vent pipe.

Direct Vent - Vent Installation - Through the Roof

1. Vent and Combustion Air Penetration

- Vent pipe penetration through combustible or non-combustible wall material should maintain a minimum 1/4" clearance. The diameter of the penetration hole should be 4" minimum for 3" pipe or 5" minimum for 4" pipe.
 - Combustion air pipe penetration can maintain zero clearance. The diameter of the penetration hole should be 3 1/2" minimum for 3" pipe or 4-1/2" minimum for 4" pipe.
2. The installer must use a galvanized metal thimble for the vent pipe penetration.
 3. Locate the vent and combustion air pipe penetrations to provide clearances as described in Fig. 1 & Fig. 2 on page 6.
 4. The installer must comply with all local codes for isolating the vent and combustion air pipes as they pass through floors, ceilings and roofs.
 5. The installer should provide adequate flashing and sealing boots sized for the vent pipe and combustion air pipe.

Termination Fittings - Through the Roof

1. The vent and combustion air terminations must include a factory supplied "bird screen" installed as shown in Figs. 4, 5 & 6 on page 8.
2. The combustion air piping must terminate in an upside down "U" shape fashion using two 90° elbows as shown in Fig. 1 page 6 or with a tee as shown in Fig. 2 on page 6.
3. The vent piping must terminate vertically with a coupling as shown in Figs. 1 & 2 page 6.

WARNING

Do not extend the vent pipe above the roof beyond the dimensions shown in Fig. 1 & Fig. 2 on page 6. Extended exposure of the vent pipe could cause condensate to freeze and block the vent pipe.

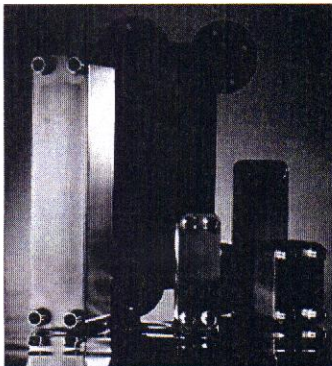
Additional quality water heating equipment available from Triangle Tube

SMART INDIRECT FIRED WATER HEATERS



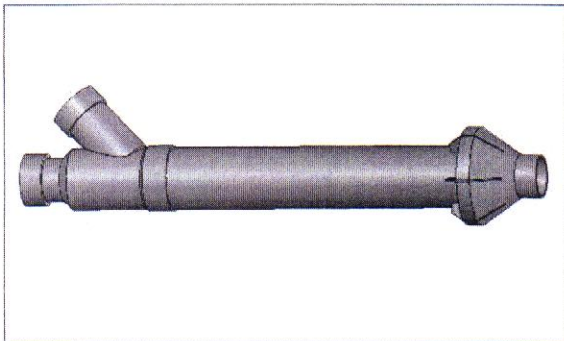
- Exclusive Tank-in-Tank design
- Stainless steel construction
- Available in 8 sizes and 2 models
- Limited LIFETIME residential warranty
- 15 year limited commercial warranty
- Self cleaning/self descaling design

TTP BRAZED PLATE HEAT EXCHANGERS

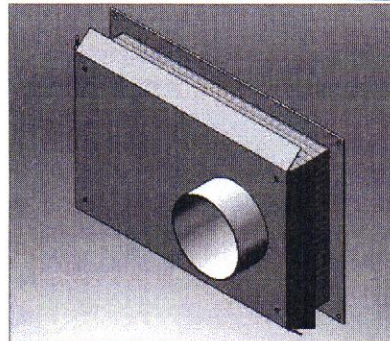


- For domestic water, snow melting, radiant floor, refrigeration
- Plates made of stainless steel, with 99.9 % copper and brazing, ensuring a high resistance to corrosion
- Self cleaning and self descaling
- Computerized sizing available from Triangle Tube/Phase III
- Available in capacities from 25,000 BTU/hr to 5,000,000 BTU/hr

PRESTIGE CONCENTRIC VENT KIT



PRESTIGE DIRECT VENT SIDE WALL TERMINATION KIT



Freeway Center - 1 Triangle Lane - Blackwood, NJ 08012
Tel: (856) 228 8881 - Fax: (856) 228 3584
E-mail: Sales@triangletube.com

Member of

