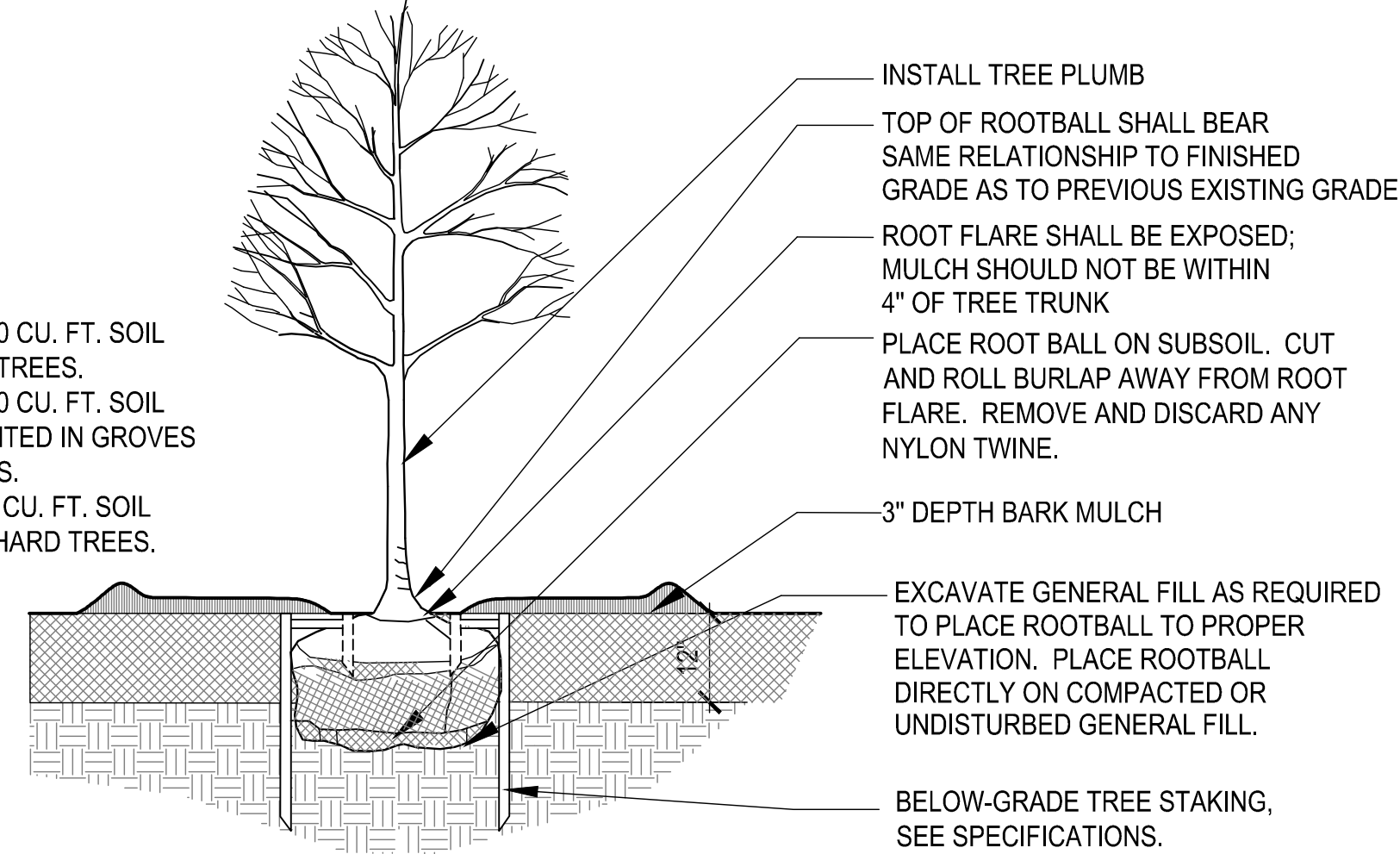
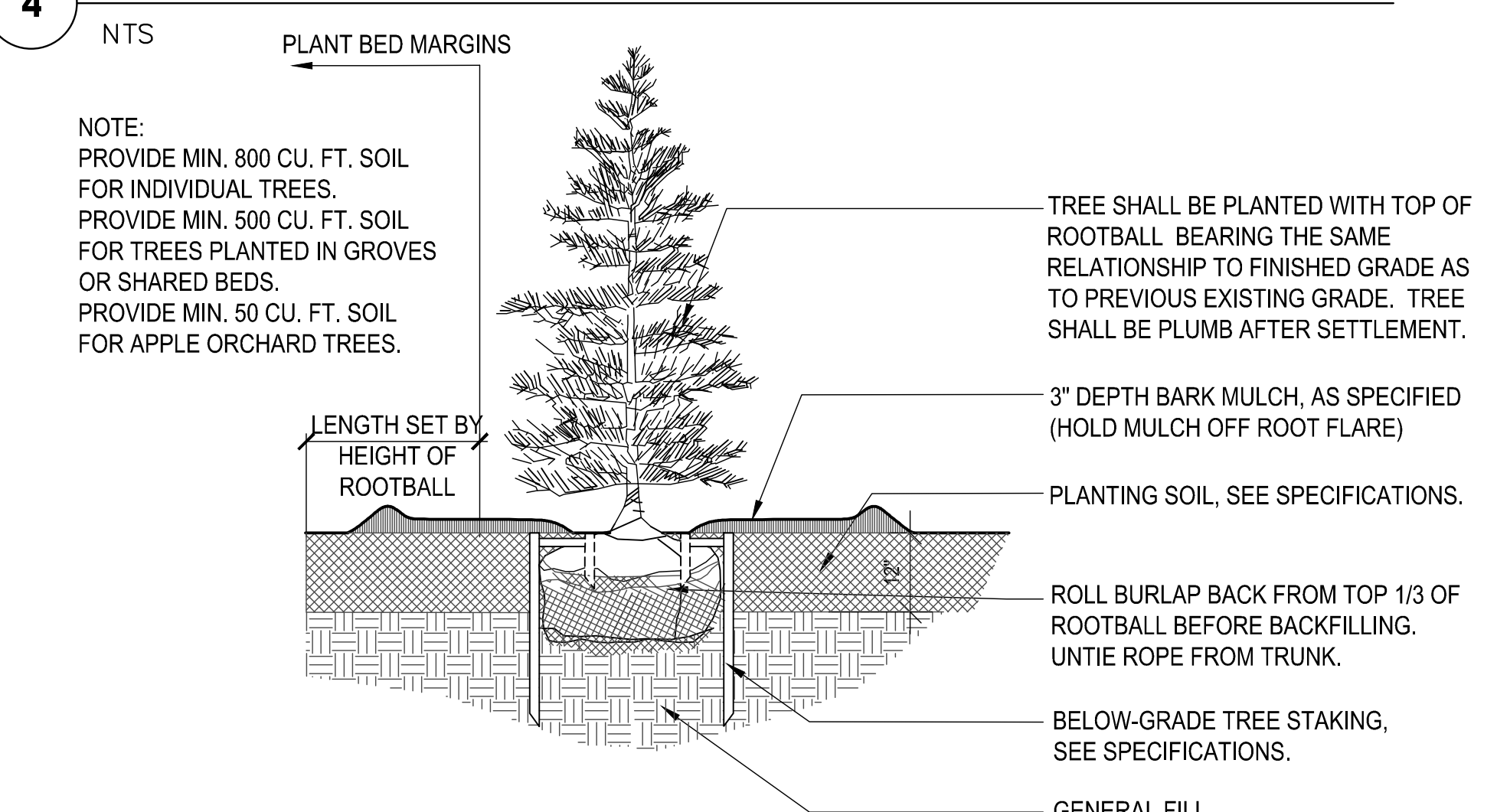


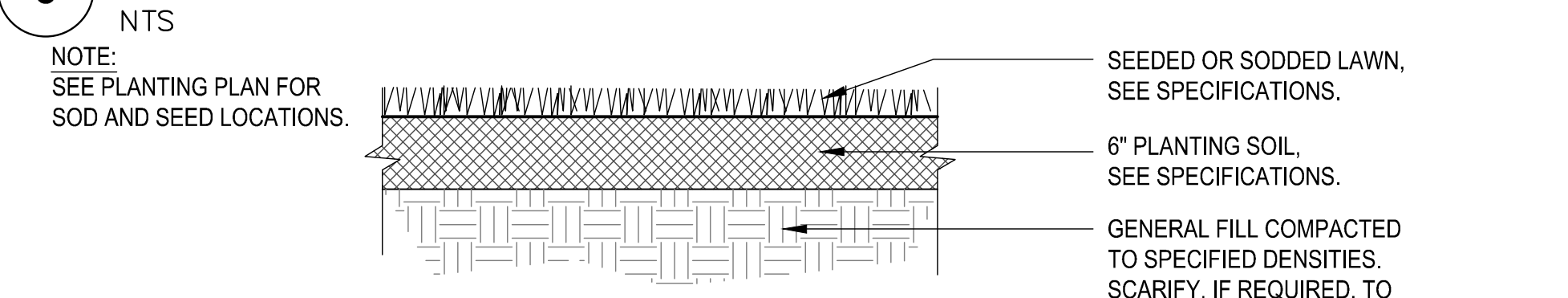
| PLANT LIST            |     |                                 |                         |                  |                   |
|-----------------------|-----|---------------------------------|-------------------------|------------------|-------------------|
| Deciduous Trees       |     |                                 |                         |                  |                   |
| Qty.                  | KEY | Botanical Name                  | Common Name             | Size             | Comments          |
| 5                     | AR  | <i>Acer rubrum</i>              | Red Maple               | 2-3" cal. B&B    |                   |
| 6                     | AS  | <i>Acer saccharum</i>           | Sugar Maple             | 2-3" cal. B&B    |                   |
| 6                     | BA  | <i>Betula alleghaniensis</i>    | Yellow Birch            | 7" cal. B&B      | Single stem       |
| 5                     | QB  | <i>Quercus bicolor</i>          | Swamp White Oak         | 2-3" cal. B&B    |                   |
| 4                     | QR  | <i>Quercus rubra</i>            | Red Oak                 | 2-3" cal. B&B    |                   |
| 5                     | ZS  | <i>Zelkova serrata</i>          | Japanese Zelkova        | 2-3" cal. B&B    |                   |
| Small Flowering Trees |     |                                 |                         |                  |                   |
| Qty.                  | KEY | Botanical Name                  | Common Name             | Size             | Comments          |
| 8                     | MDW | <i>Malus 'Donald Wyman'</i>     | Donald Wyman Crab-apple | 2-2.25" cal. B&B |                   |
| 5                     | MHG | <i>Malus 'Harvest Gold'</i>     | Harvest Gold Crab-apple | 2-2.25" cal. B&B |                   |
| 5                     | MJ  | <i>Malus 'Jackii'</i>           | Jackii Crab-apple       | 2-2.25" cal. B&B |                   |
| 5                     | MSN | <i>Malus 'Snowdrift'</i>        | Snowdrift Crab-apple    | 2-2.25" cal. B&B |                   |
| Evergreen Trees       |     |                                 |                         |                  |                   |
| Qty.                  | KEY | Botanical Name                  | Common Name             | Size             | Comments          |
| 4                     | AC  | <i>Abies concolor</i>           | White Fir               | 7-8 ft. tall     |                   |
| 4                     | PA  | <i>Picea abies</i>              | Norway Spruce           | 7-8 ft. tall     |                   |
| 11                    | PG  | <i>Picea glauca</i>             | White Spruce            | 7-8 ft. tall     |                   |
| 6                     | PO  | <i>Picea omorika</i>            | Serbian Spruce          | 7-8 ft. tall     |                   |
| Apple Orchard Trees   |     |                                 |                         |                  |                   |
| Qty.                  | KEY | Botanical Name                  | Common Name             | Size             | Comments          |
| 1                     | MAK | <i>Malus 'Ashmead's Kernel'</i> | Ashmead's Kernel Apple  | 3/4" cal. B&B    |                   |
| 1                     | MB  | <i>Malus 'Baldwin'</i>          | Baldwin Apple           | 3/4" cal. B&B    |                   |
| 1                     | MBA | <i>Malus 'Briggs Auburn'</i>    | Briggs Auburn Apple     | 3/4" cal. B&B    |                   |
| 1                     | MBC | <i>Malus 'Bramford Cider'</i>   | Bramford Cider Apple    | 3/4" cal. B&B    |                   |
| 1                     | MBO | <i>Malus 'Black Oxford'</i>     | Black Oxford Apple      | 3/4" cal. B&B    |                   |
| 1                     | MBP | <i>Malus 'Blue Pearmain'</i>    | Blue Pearmain Apple     | 3/4" cal. B&B    |                   |
| 1                     | MBR | <i>Malus 'Brown's Cider'</i>    | Brown's Cider Apple     | 3/4" cal. B&B    |                   |
| Groundcover           |     |                                 |                         |                  |                   |
| Qty.                  | KEY | Botanical Name                  | Common Name             | Size             | Comments          |
| 150                   | VM  | <i>Vinca minor</i>              | Periwinkle              | #4 pot           | Plant at 12" O.C. |



**4 DECIDUOUS TREE PLANTING**

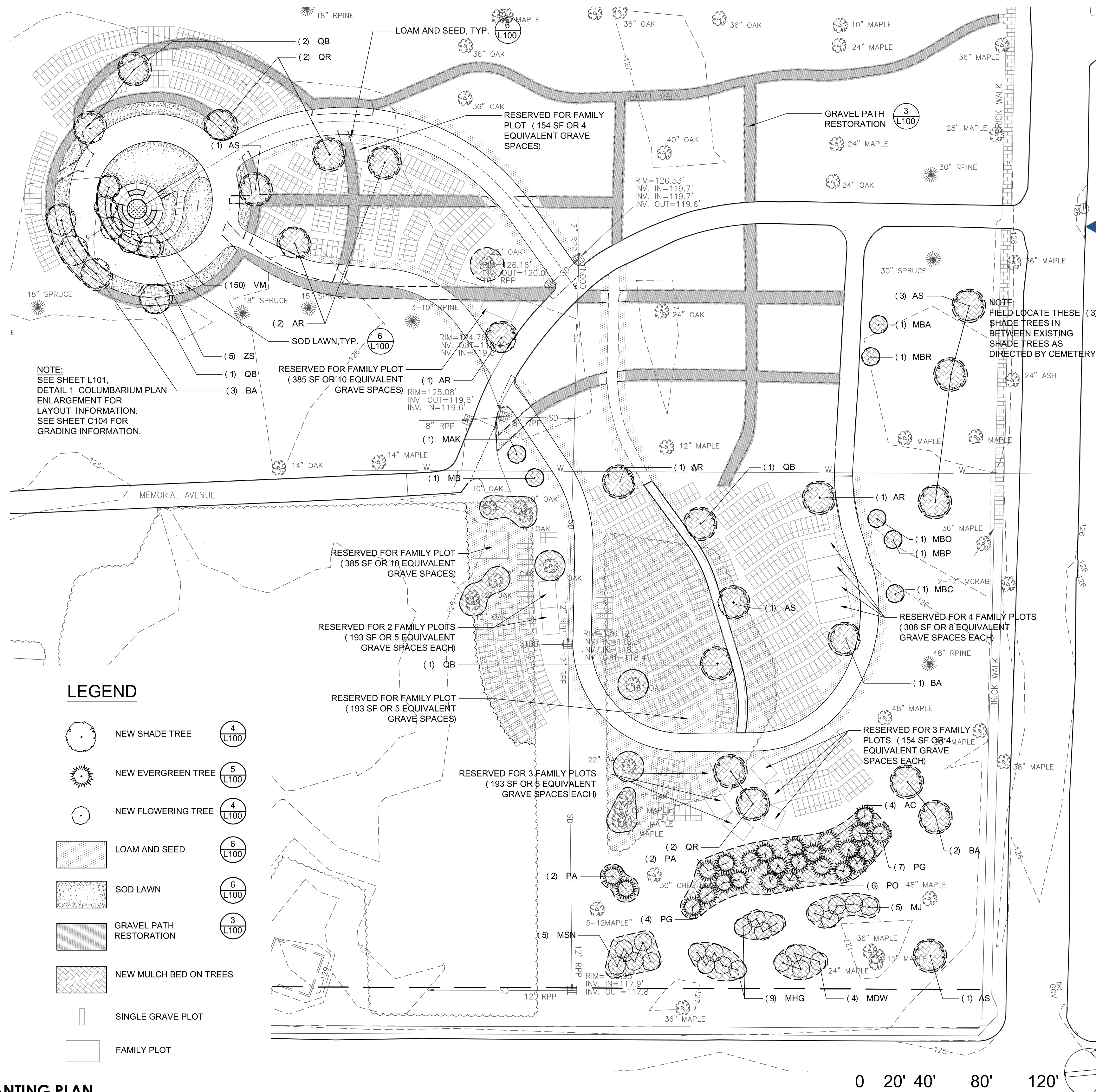


**5 EVERGREEN TREE PLANTING**

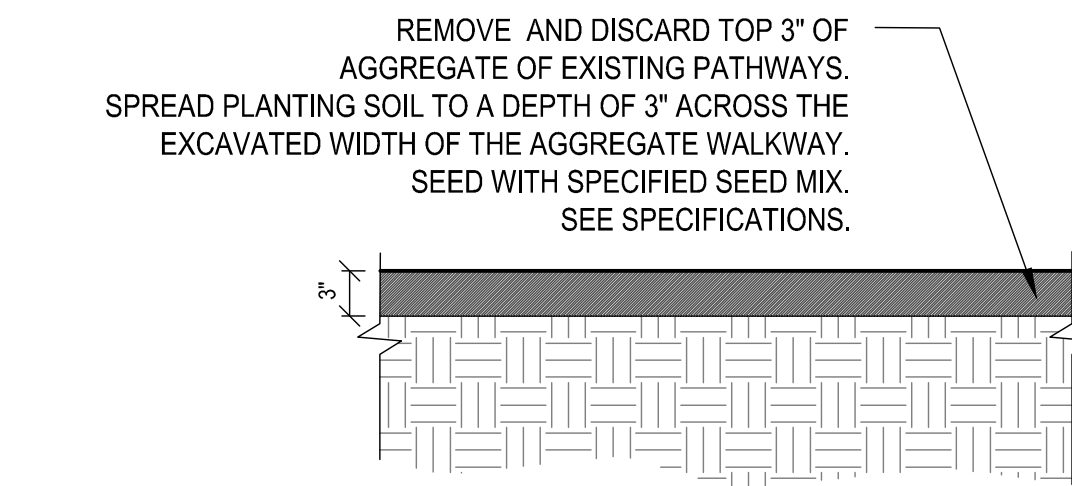


**6 LOAM AND SEED / SOD LAWN**

NTS

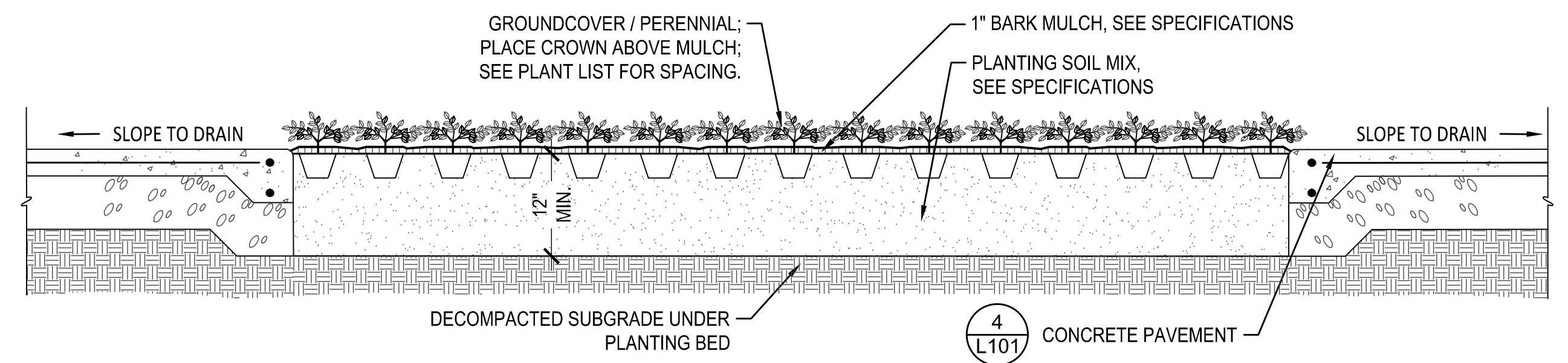


**1 PLANTING PLAN**  
1" = 40'-0"



**3 GRAVEL PATH RESTORATION**

NTS



**2 PLANTER CROSS SECTION**

NTS

41 HUTCHINS DRIVE  
PORTLAND, MAINE 04102  
800.426.4262 | www.woodardcurran.com

**WOODARD & CURRAN**

COMMITMENT & INTEGRITY DRIVE RESULTS

LDD PROJECT NAME: N/A  
DRAWING NAME: XR-SITE\_EVERGREEN.DWG  
FIELD BOOK USED: N/A

DESIGNED BY: H.A./U.S.  
DRAWN BY: U.S.  
CHECKED BY: H.A./J.L.  
SCALE: AS NOTED  
DATE: AUG. 05, 2014

REGISTERED LANDSCAPE ARCHITECT  
HARRIS  
No. 4182  
STATE OF MAINE

REFERENCES:  
10-0809.dwg

CRJA  
Carol R. Johnson Associates Inc.  
landscape architects  
115 Broad Street, Boston, Massachusetts 02109  
T: 617.269.2300 F: 617.269.2306  
www.crja.com

EVERGREEN CEMETERY  
PHASE II

LANDSCAPE PLAN AND DETAILS

CITY OF PORTLAND, MAINE  
PUBLIC SERVICES DEPARTMENT  
ENGINEERING SECTION

MAINE RESURGAM ENTAIL  
CITY OF PORTLAND, MAINE

SHEET #  
6 OF 8  
PLAN NUMBER  
L-100