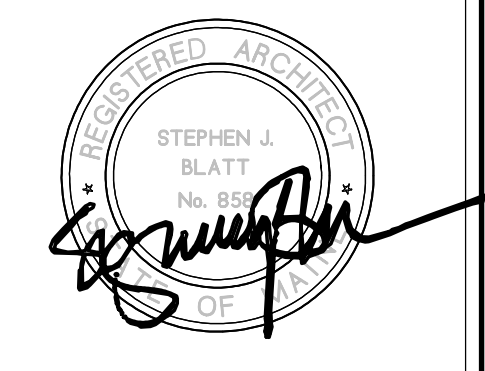


Revisions

Stephen Blatt
Architects

5 South Street
Post Office Box
583 DTS
Portland, Maine
04112-0583
Voice:
207.763.5911
Email:
sba@sbaarchitects.com



Consultants
Structural Engineer
PINKHAM & GREER

Job No.: 16.05
Date: MARCH 18, 2016
Scale: 1/4" = 1'-0"
Drawn by: DRC/CR
Checked by: SB

Drawing Title:
**FIRST & SECOND
FLOOR PLANS,
ELECTRICAL PLANS**

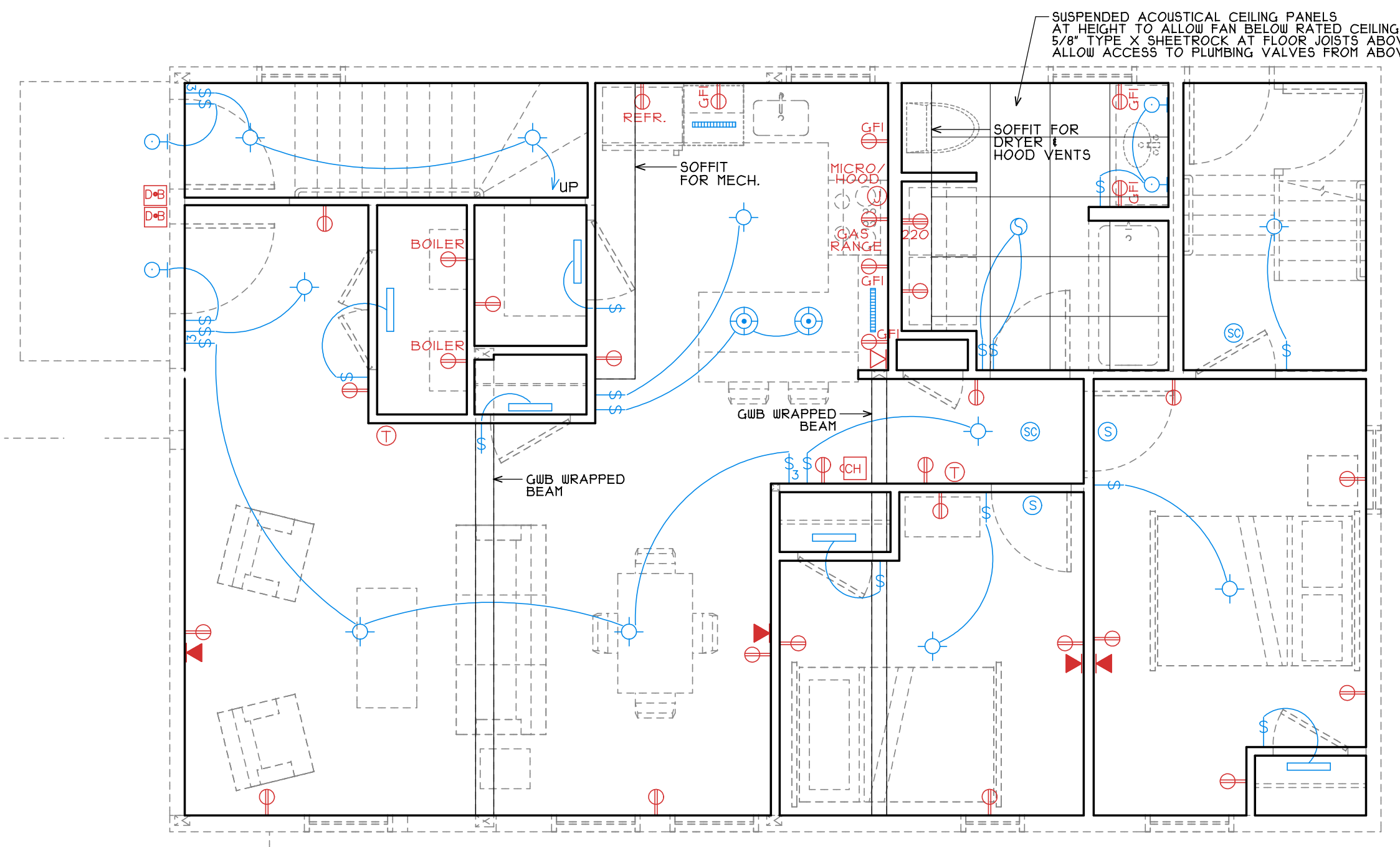
A1.1

CONSTRUCTION SET

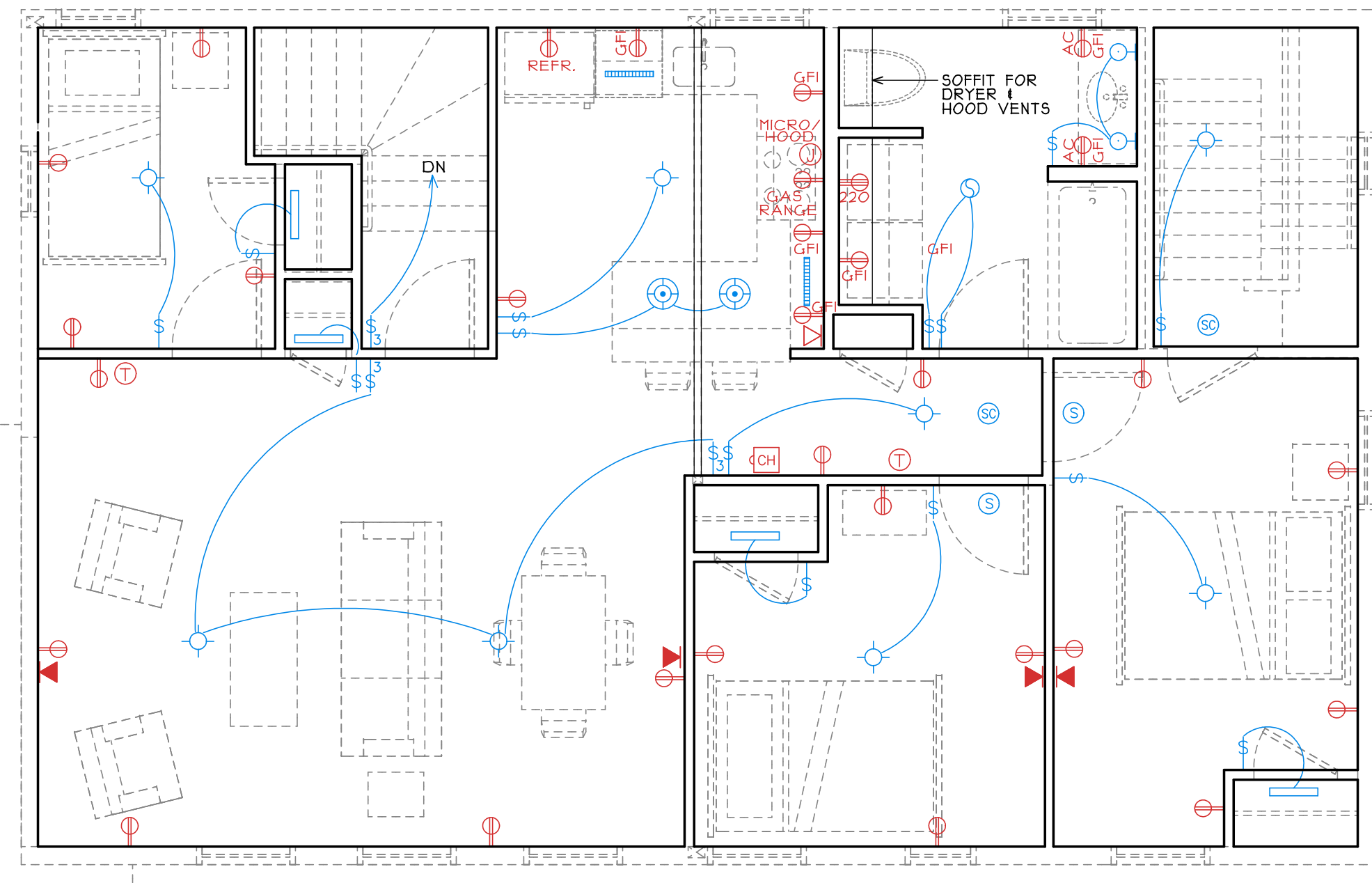
- ### ELECTRICAL NOTES
1. ALL WORK SHALL CONFORM TO LOCAL AND STATE CODES AND THE N.E.C.
 2. SWITCHES SHALL BE MOUNTED 4'-0" TO TOP OF PLATE. SWITCHES SHOWN IN SAME AREA SHALL BE GANGED UNDER A COMMON PLATE UP TO THREE SWITCHES MAXIMUM. MOUNT SWITCHES AS CLOSE AS POSSIBLE TO EDGE OF DOOR FRAME ON LOCKSIDE.
 3. MINIMUM WIRE SHALL BE #12AWG COPPER EXCEPT #15A CIRCUITS, WHERE #14AWG SHALL BE MINIMUM. ALL REFERENCE TO WIRE SIZE IS INTENDED AS COPPER. CIRCUIT BREAKER SIZE SHALL DICTATE WIRE SIZE OF ALL CONDUCTORS.
 4. THE ENTIRE ELECTRICAL SYSTEM SHALL BE GROUNDED BY MEANS OF A SEPARATE GROUND CONDUCTOR. CONDUIT SHALL NOT BE CONSIDERED A GROUND CONDUCTOR BUT SHALL BE GROUNDED (SEE TABLE 250-96 IN N.E.C.).
 5. THIS CONTRACTOR SHALL COORDINATE WITH OTHER TRADES WHERE EQUIPMENT AND/OR DEVICES ARE FURNISHED BY OTHER TRADES AND WIRED WHOLLY OR IN PART BY THIS CONTRACTOR SO AS TO ACHIEVE A COMPLETE AND OPERATING SYSTEM.
 6. OUTLETS OR JUNCTION BOXES MOUNTED BACK TO BACK SHALL BE PROHIBITED.
 7. THIS CONTRACTOR SHALL VERIFY MOUNTING HEIGHTS FOR ALL OUTLETS. COORDINATE RECEPTACLES CAREFULLY PRIOR TO INSTALLATION.
 8. ALL KITCHEN AND BATHROOM OUTLETS TO BE GROUND FAULT INTERRUPT, OR PROTECTED BY GFCI BREAKER.
 9. FINAL LOCATION OF ALL FIXTURES & OUTLETS TO BE APPROVED IN FIELD OWNER PRIOR TO ROUGH-IN.
 10. THIS CONTRACTOR SHALL BE RESPONSIBLE FOR DUCTING ALL BATHROOM EXHAUST FANS TO EXTERIOR VENTS. ONLY RIGID PVC OR GALVANIZED METAL DUCT SHALL BE USED. INSULATE DUCTS IN COLD SPACES.
 11. ALL RECESSED LIGHTS AND FANS TO BE DESIGNED FOR SAFE INSTALLATION IN INSULATED CEILING AND FIRE-RATED AS REQUIRED.
 12. ALL CIRCUITS IN BEDROOM & LIVING AREAS TO BE AFCI PROTECTED, INCLUDING LIGHTING.

ELECTRICAL LEGEND

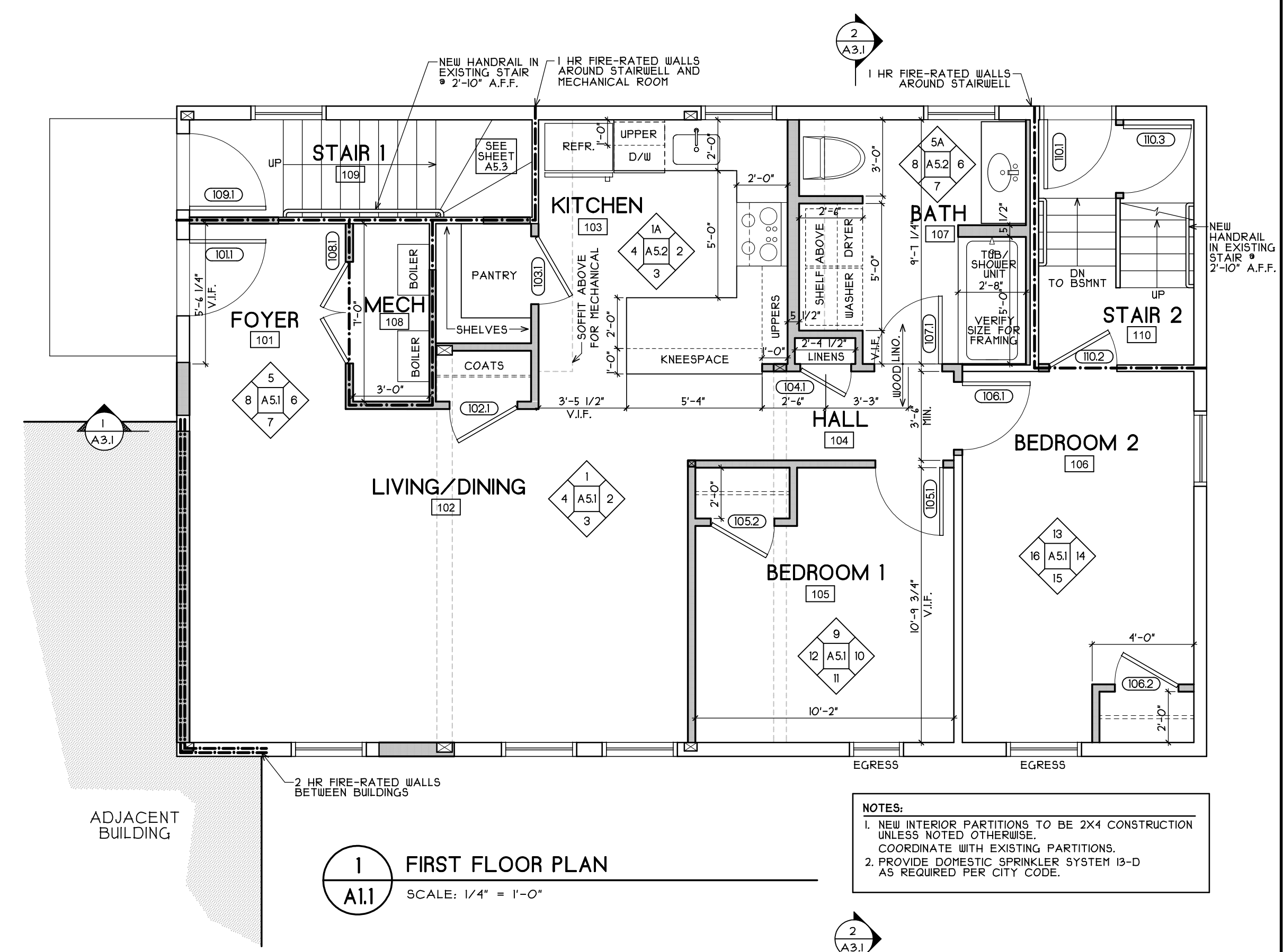
SYMBOL	DESCRIPTION	NOTES
⊞	SWITCH	
⊞⊞	3-WAY SWITCH	
⊞⊞⊞	DUPLEX OUTLET	
⊞⊞⊞⊞	DUPLEX OUTLET GROUND FAULT INTERRUPT	
⊞⊞⊞⊞⊞	220-240V OUTLET	
⊞⊞⊞⊞⊞⊞	THERMOSTAT	
⊞⊞⊞⊞⊞⊞⊞	DOORBELL	
⊞⊞⊞⊞⊞⊞⊞⊞	DOORBELL CHIME	
⊞⊞⊞⊞⊞⊞⊞⊞⊞	JUNCTION BOX	
⊞⊞⊞⊞⊞⊞⊞⊞⊞⊞	UTILITY CEILING FIXTURE	PORCELAIN OR EQUIVALENT
⊞⊞⊞⊞⊞⊞⊞⊞⊞⊞⊞	SURFACE-MTD CEILING FIXTURE	
⊞⊞⊞⊞⊞⊞⊞⊞⊞⊞⊞⊞	PENDANT CEILING FIXTURE	
⊞⊞⊞⊞⊞⊞⊞⊞⊞⊞⊞⊞⊞	RECESSED CEILING FIXTURE	
⊞⊞⊞⊞⊞⊞⊞⊞⊞⊞⊞⊞⊞⊞	WALL MOUNTED FIXTURE	
⊞⊞⊞⊞⊞⊞⊞⊞⊞⊞⊞⊞⊞⊞⊞	JUNCTION BOX	
⊞⊞⊞⊞⊞⊞⊞⊞⊞⊞⊞⊞⊞⊞⊞⊞	UNDER CABINET FIXTURE	
⊞⊞⊞⊞⊞⊞⊞⊞⊞⊞⊞⊞⊞⊞⊞⊞⊞	EXHAUST FAN / LIGHT	SEPARATE SWITCHES FOR FAN AND LIGHT
⊞⊞⊞⊞⊞⊞⊞⊞⊞⊞⊞⊞⊞⊞⊞⊞⊞⊞	EXHAUST FAN	
⊞⊞⊞⊞⊞⊞⊞⊞⊞⊞⊞⊞⊞⊞⊞⊞⊞⊞⊞⊞	SMOKE DETECTOR	INTERCONNECTED AND HARDWIRED WITH BATTERY BACKUP
⊞⊞⊞⊞⊞⊞⊞⊞⊞⊞⊞⊞⊞⊞⊞⊞⊞⊞⊞⊞⊞	WALL MOUNTED SMOKE DETECTOR	INTERCONNECTED AND HARDWIRED WITH BATTERY BACKUP
⊞⊞⊞⊞⊞⊞⊞⊞⊞⊞⊞⊞⊞⊞⊞⊞⊞⊞⊞⊞⊞⊞	SMOKE / CARBON MONOXIDE SENSOR	INTERCONNECTED AND HARDWIRED WITH BATTERY BACKUP
⊞⊞⊞⊞⊞⊞⊞⊞⊞⊞⊞⊞⊞⊞⊞⊞⊞⊞⊞⊞⊞⊞⊞	COAXIAL CABLE/INTERNET JACK	
⊞⊞⊞⊞⊞⊞⊞⊞⊞⊞⊞⊞⊞⊞⊞⊞⊞⊞⊞⊞⊞⊞⊞⊞	DUPLEX TELEPHONE OUTLET	
⊞⊞⊞⊞⊞⊞⊞⊞⊞⊞⊞⊞⊞⊞⊞⊞⊞⊞⊞⊞⊞⊞⊞⊞⊞	SURFACE MOUNTED CLOSET FIXTURE	



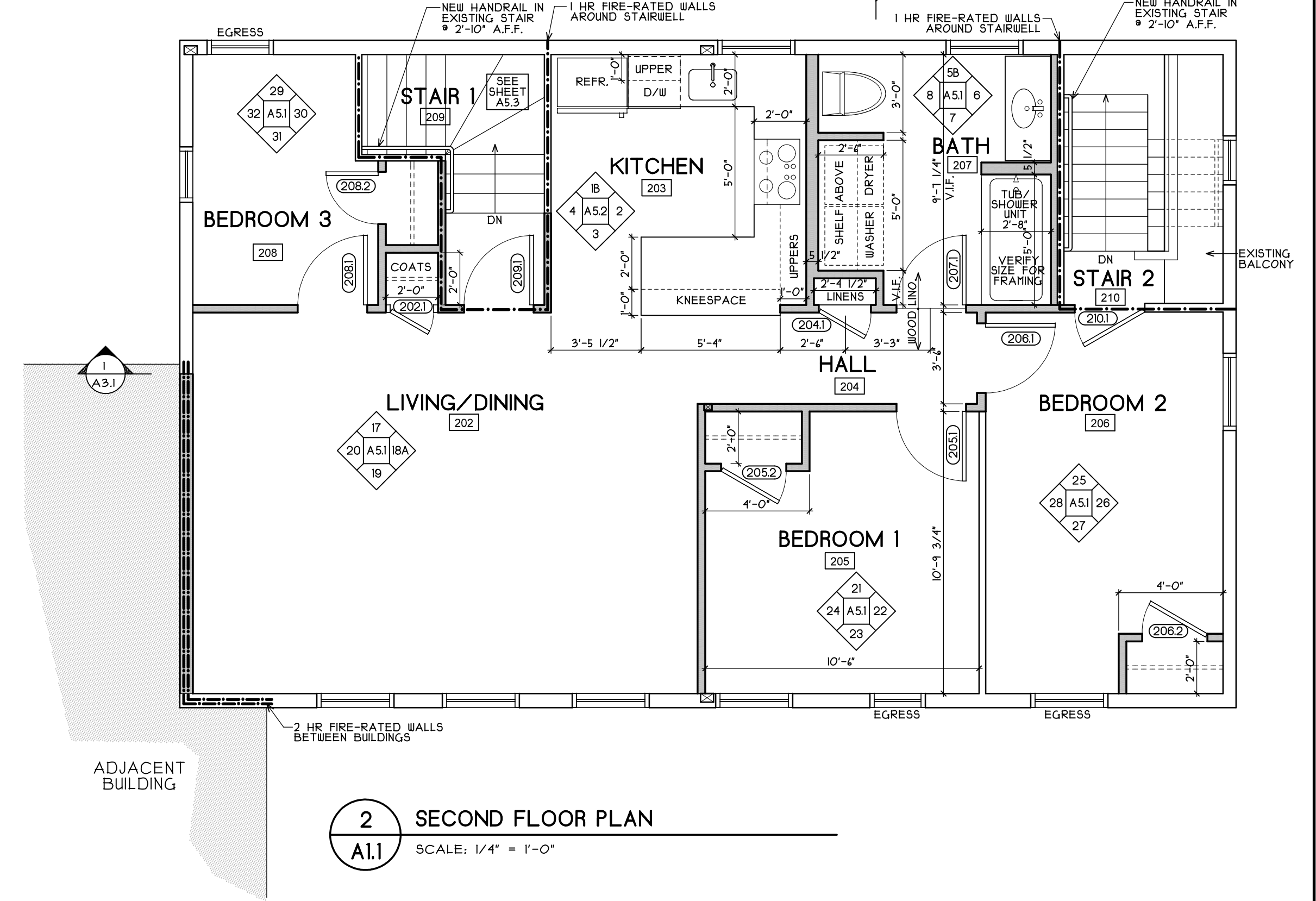
3 FIRST FLOOR RCP POWER/LIGHTING PLAN
A1.1 SCALE: 1/4" = 1'-0"



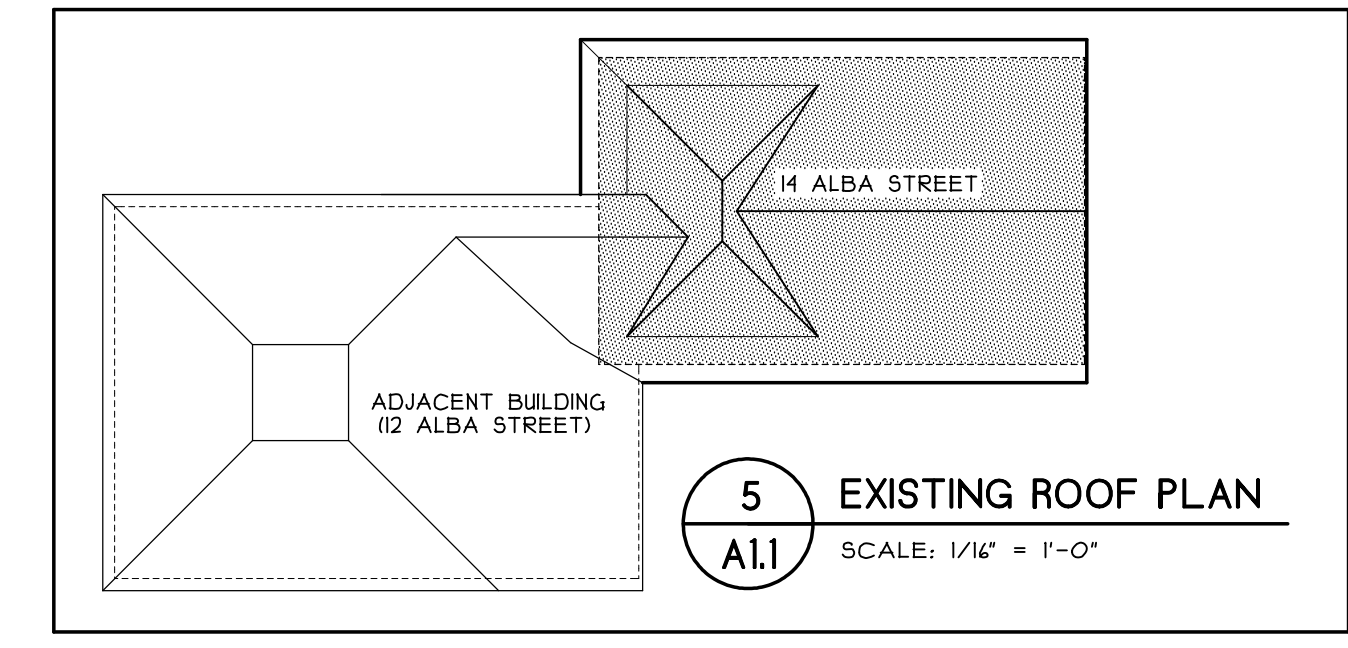
4 SECOND FLOOR RCP POWER/LIGHTING PLAN
A1.1 SCALE: 1/4" = 1'-0"



1 FIRST FLOOR PLAN
A1.1 SCALE: 1/4" = 1'-0"



2 SECOND FLOOR PLAN
A1.1 SCALE: 1/4" = 1'-0"



5 EXISTING ROOF PLAN
A1.1 SCALE: 1/4" = 1'-0"

