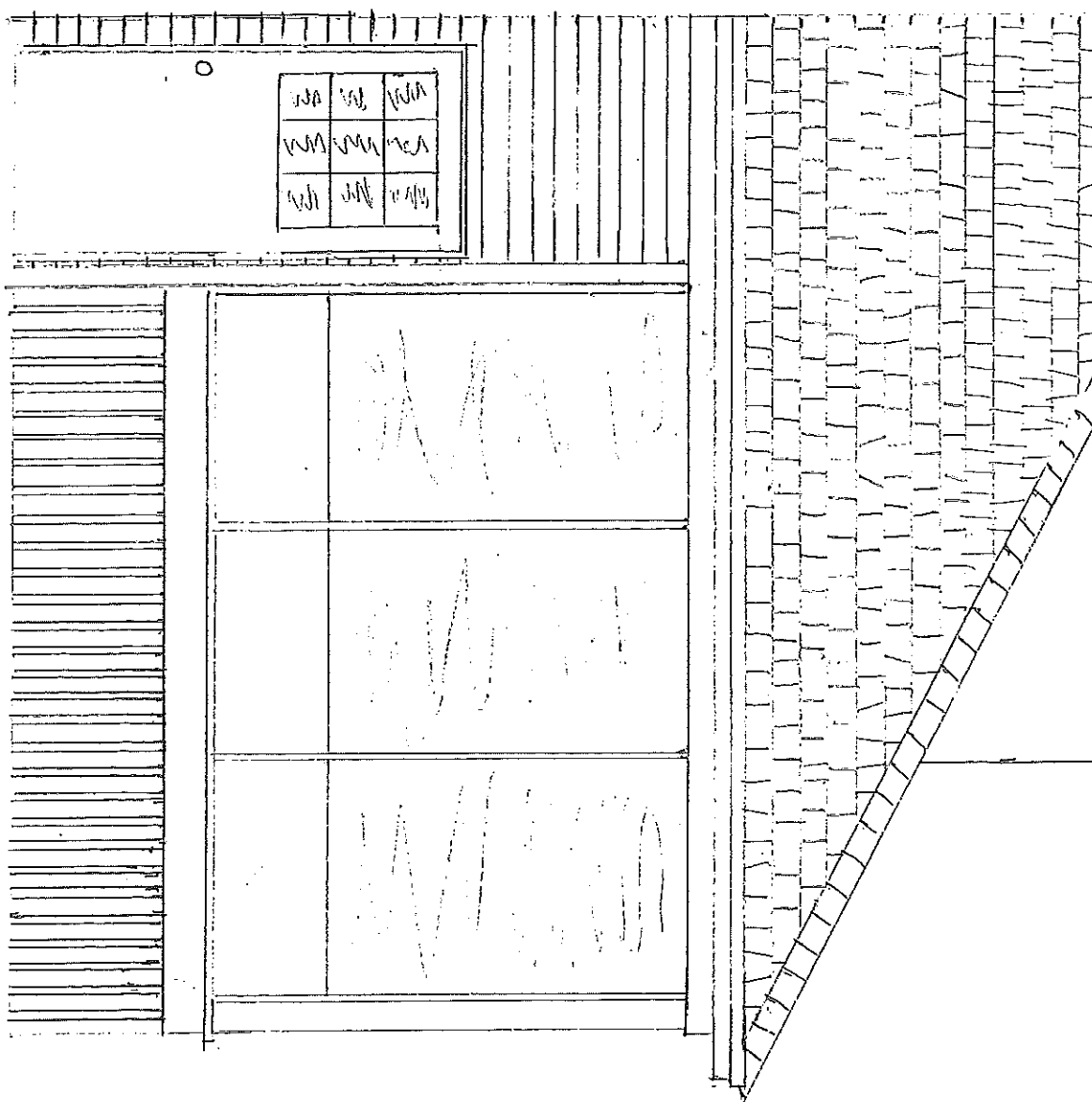
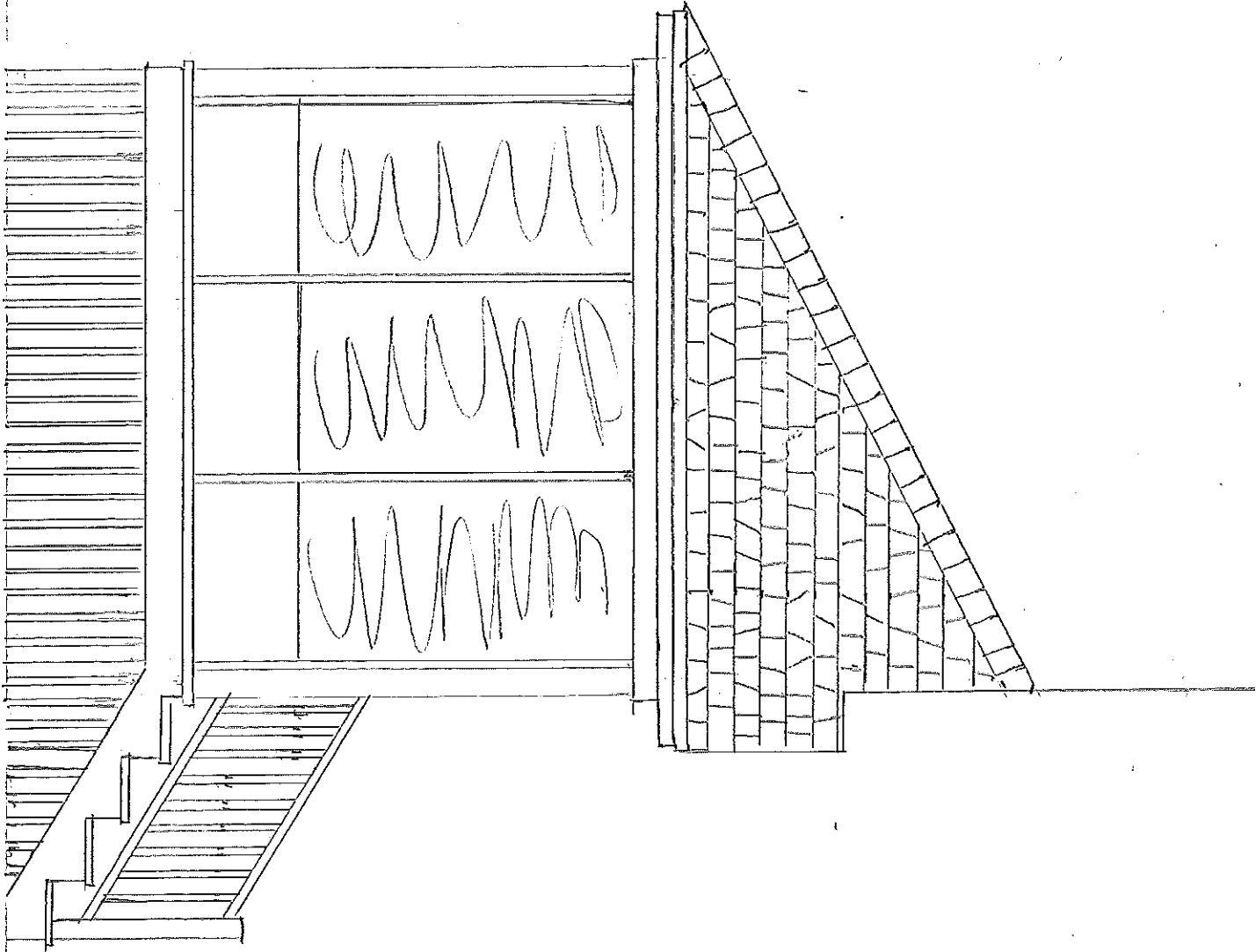


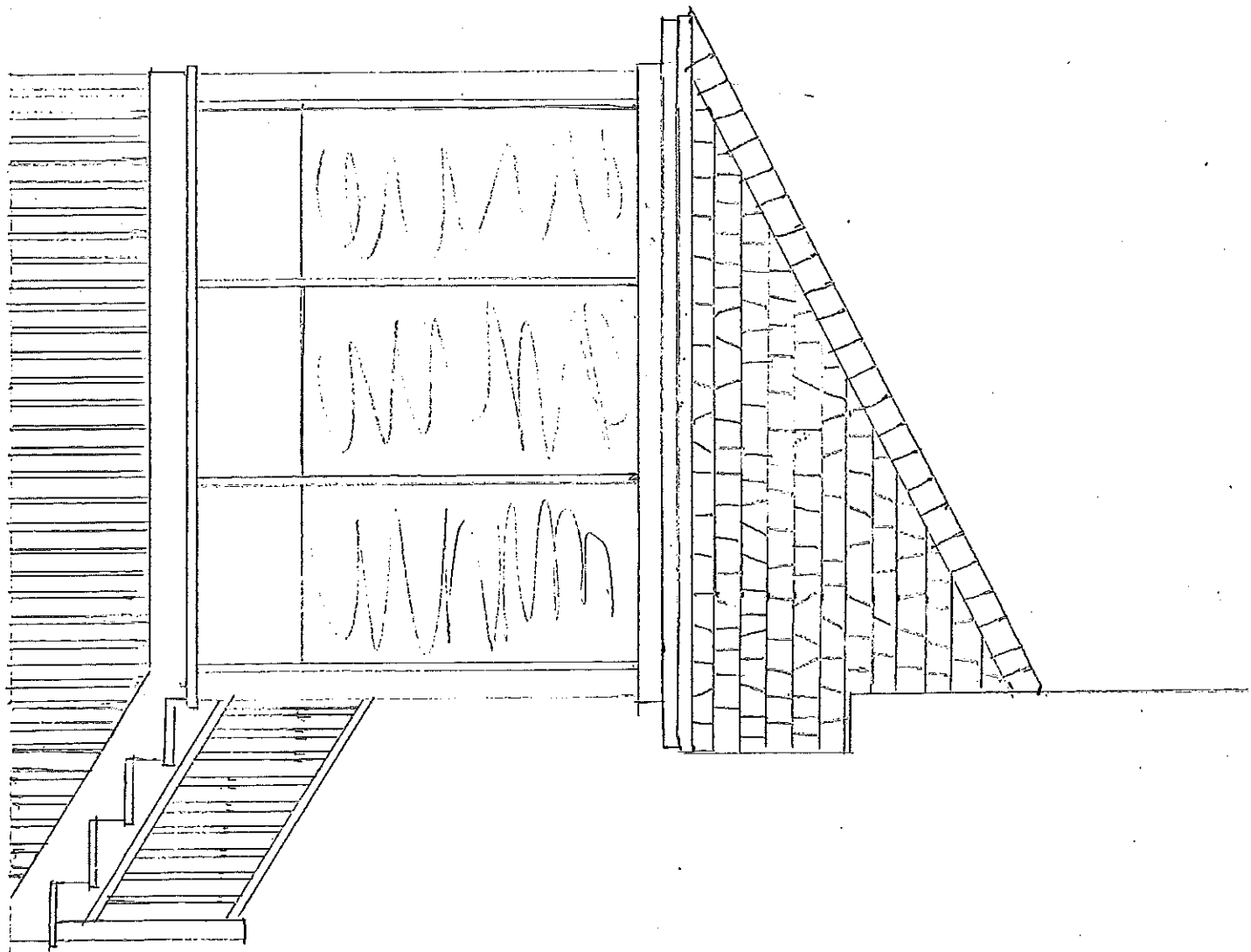
19 ORKNEY ST. PTLO



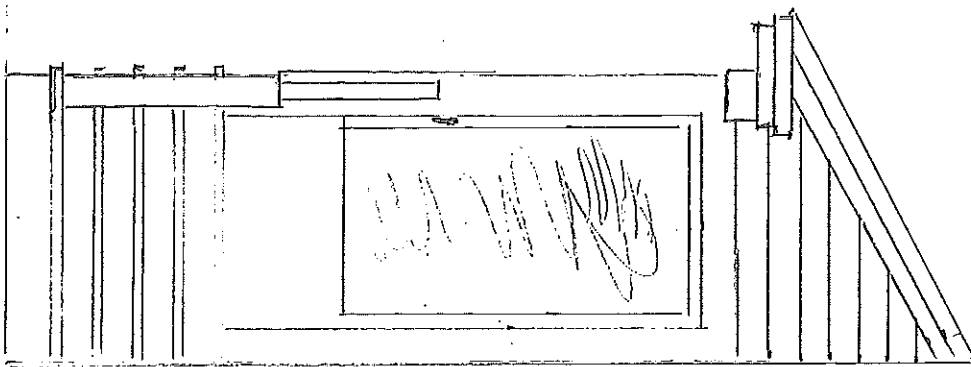
$\frac{3}{8}'' = 1'$



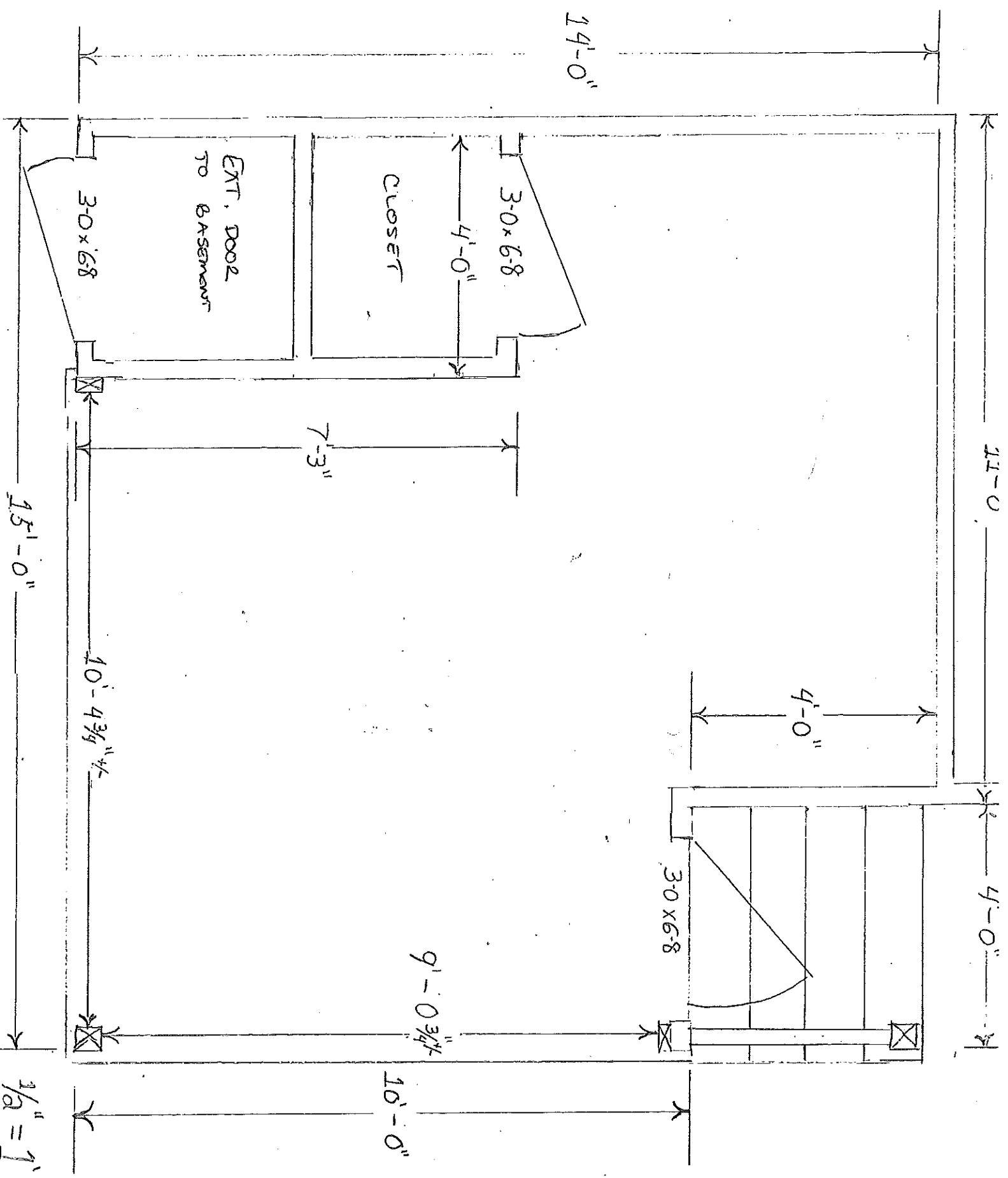
$\frac{3}{8}'' = 1'$



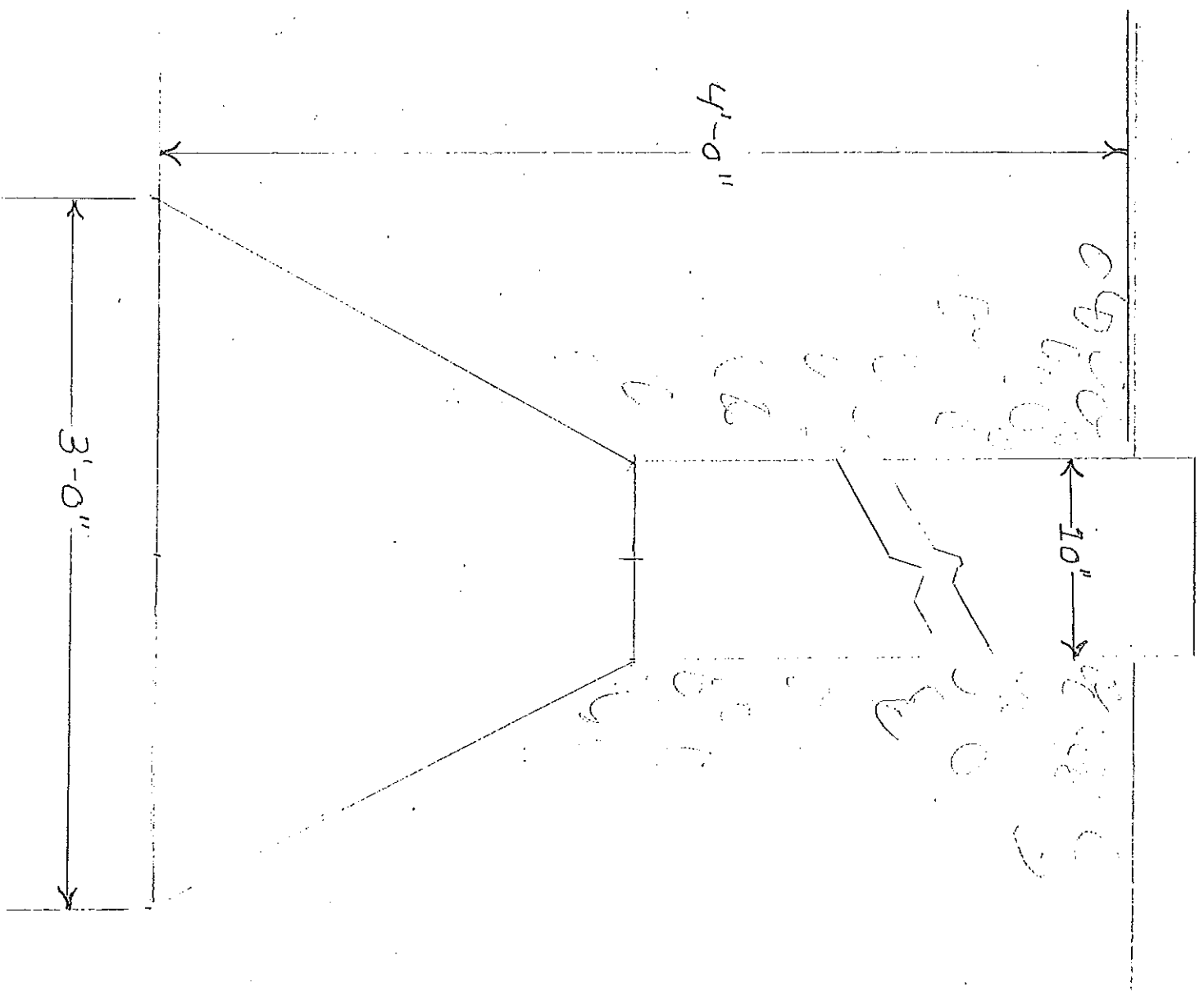
$\frac{3}{8}'' = 1'$



$\frac{3}{8}'' = 1'$



Where 4"x4" support posts
do not sit on existing slab,
they will sit on a 10" sona
tube with a 3' Big foot base
filled with concrete set at
4' below grade.



3/4" sheathing
foundation

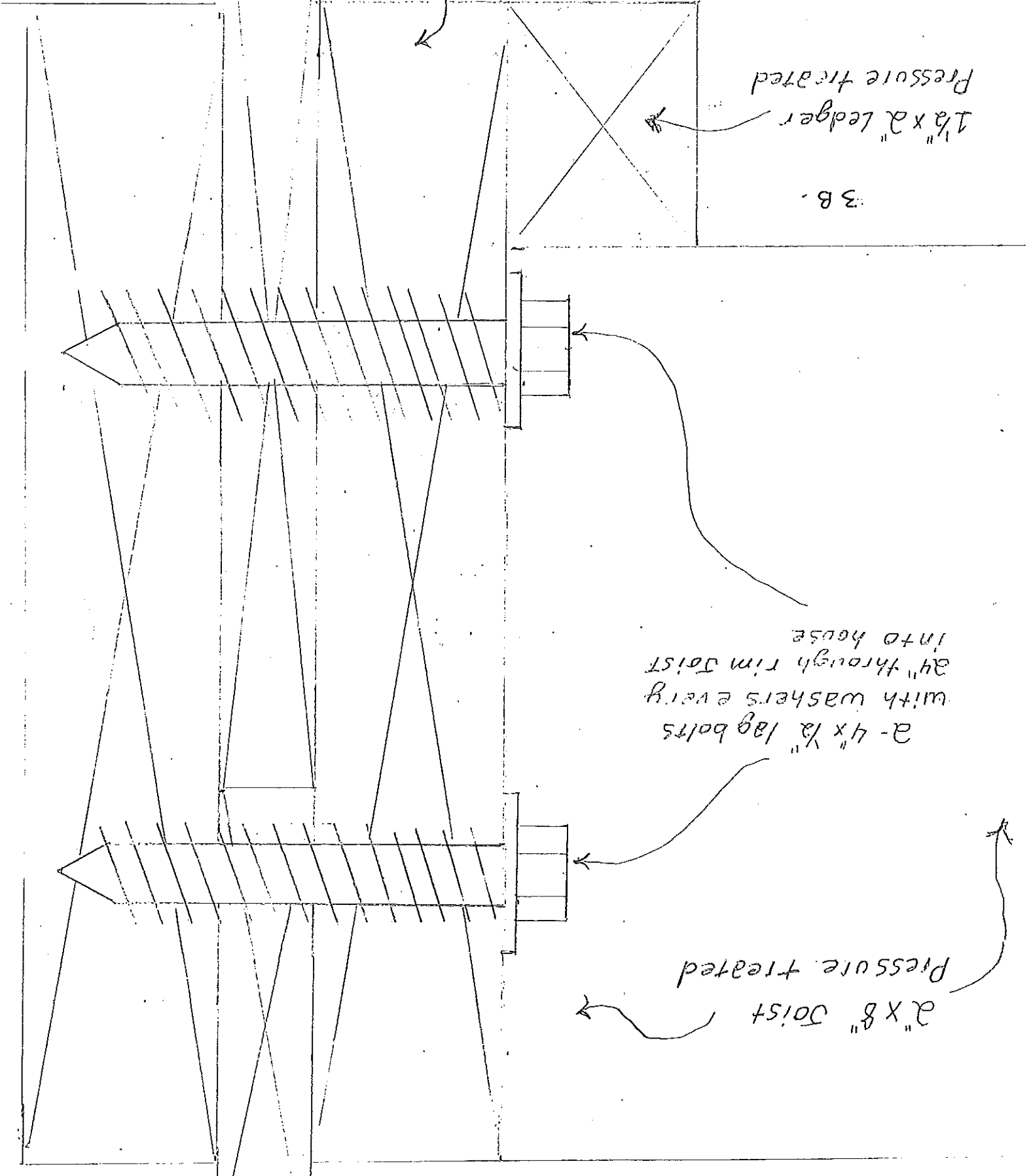
2"x10" rim joist
Pressure treated

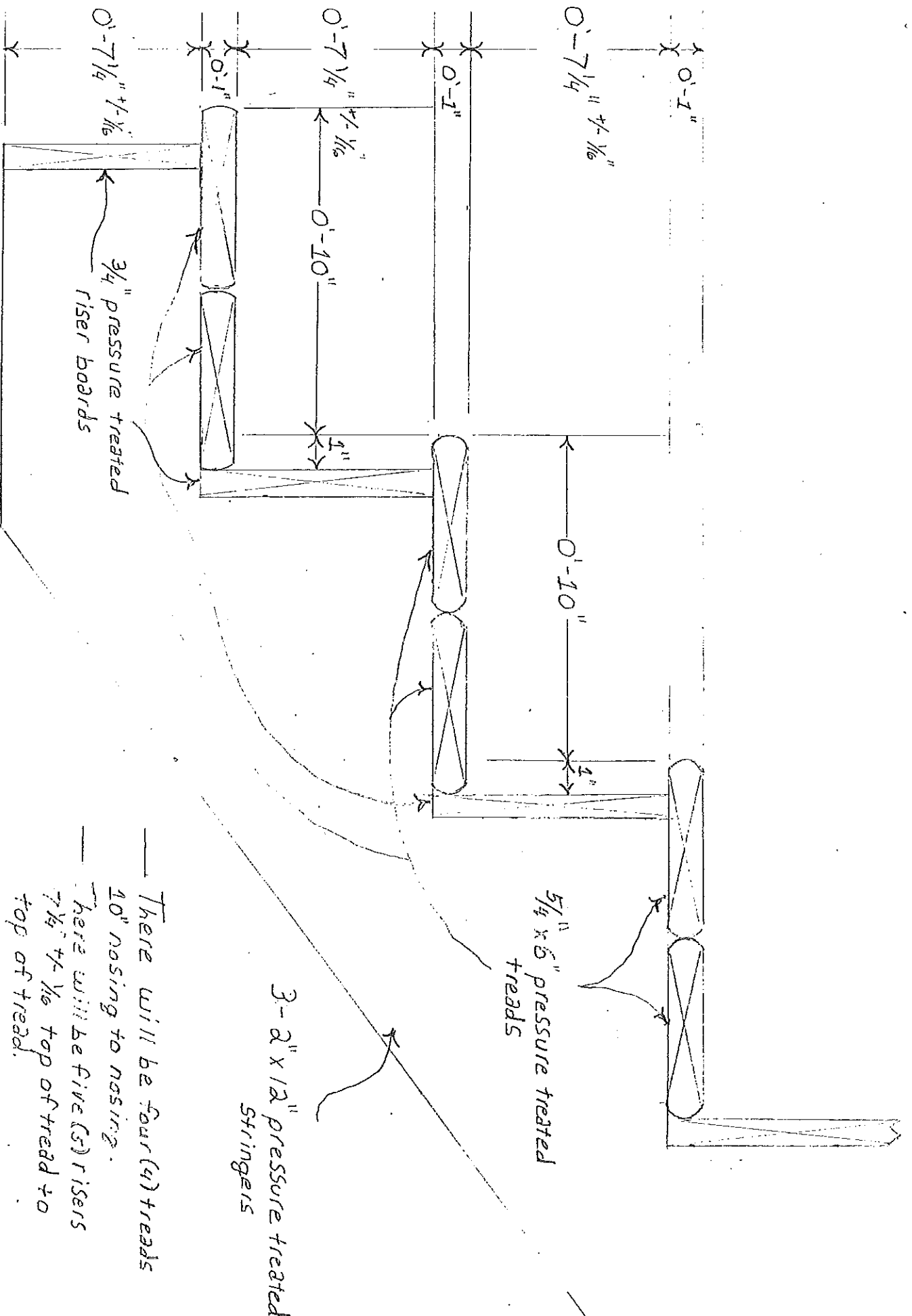
1 1/2"x2" ledger
Pressure treated

3B.

2-4"x1/2" lag bolts
with washers every
24" through rim joist
into house

2"x8" joist
Pressure treated

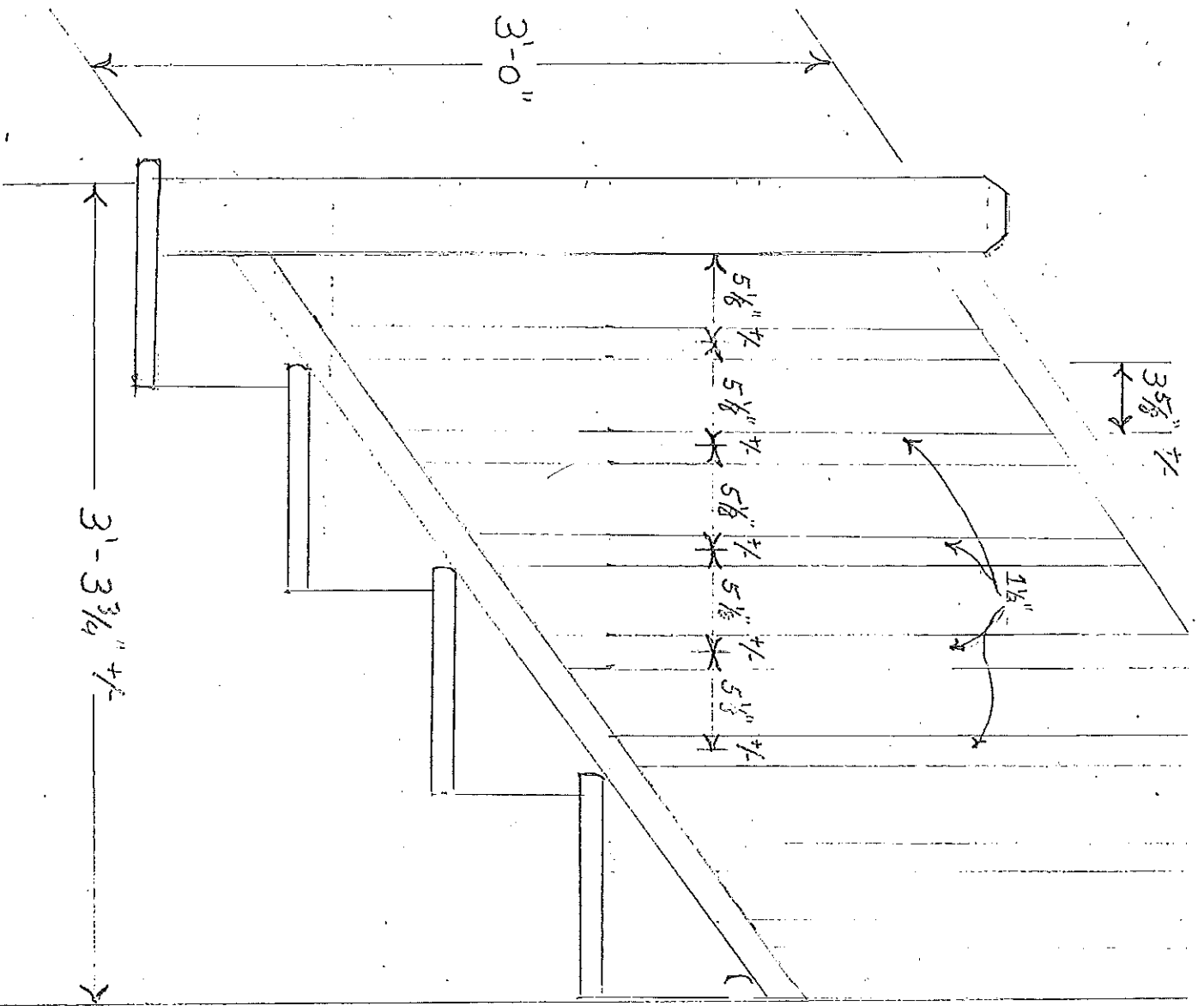




Exterior Stairs

3" = 1'-0"

Railing Exterior Stairs
 $1\frac{1}{8}'' = 1'-0''$



Front View

